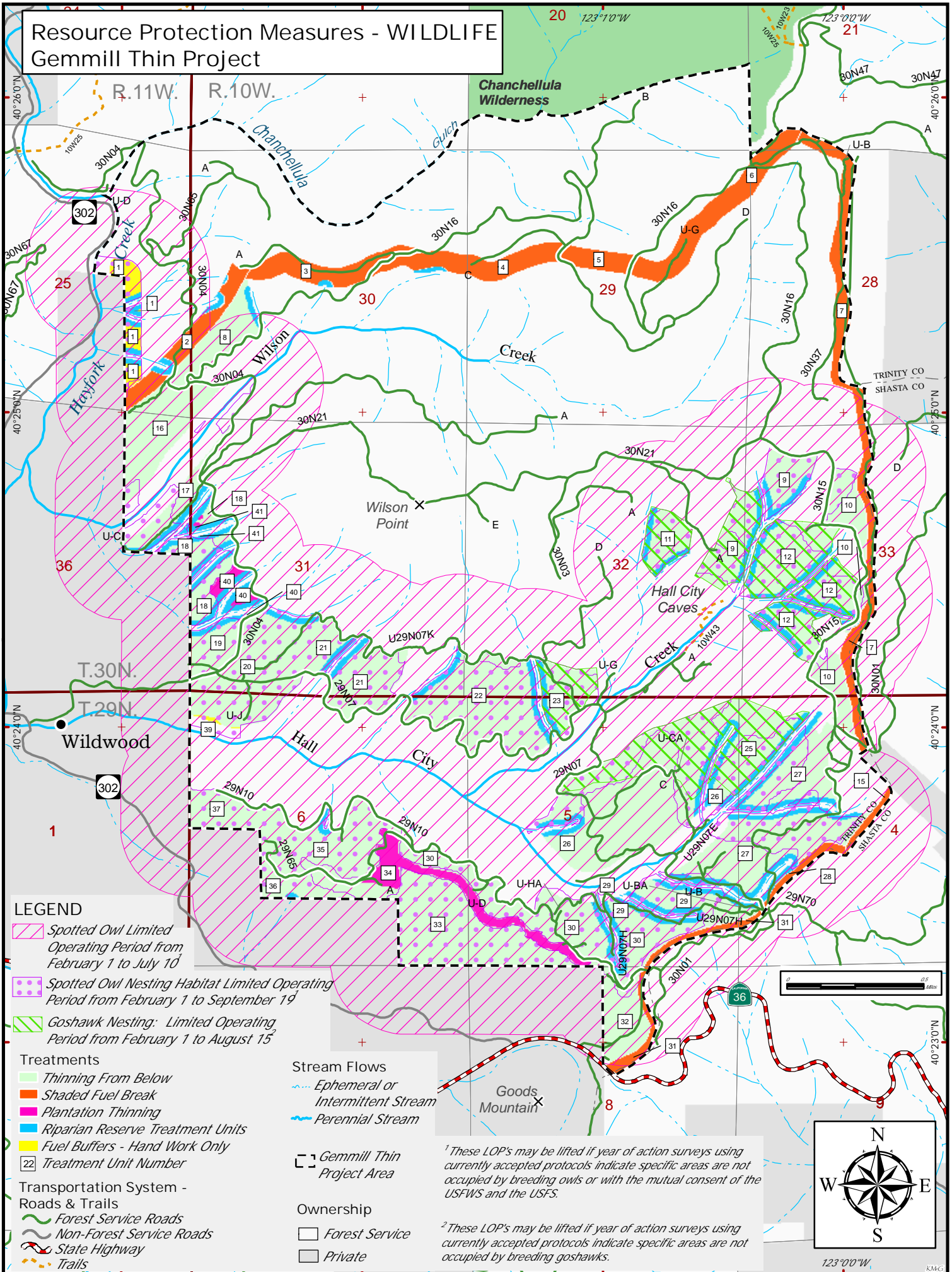


# Resource Protection Measures - WILDLIFE Gemmill Thin Project



## LEGEND

- Spotted Owl Limited Operating Period from February 1 to July 10
  - Spotted Owl Nesting Habitat Limited Operating Period from February 1 to September 19
  - Goshawk Nesting: Limited Operating Period from February 1 to August 15
- Treatments**
- Thinning From Below
  - Shaded Fuel Break
  - Plantation Thinning
  - Riparian Reserve Treatment Units
  - Fuel Buffers - Hand Work Only
  - 22 Treatment Unit Number
- Transportation System - Roads & Trails**
- Forest Service Roads
  - Non-Forest Service Roads
  - State Highway
  - Trails
- Stream Flows**
- Ephemeral or Intermittent Stream
  - Perennial Stream
- Ownership**
- Forest Service
  - Private
- Other Symbols**
- Gemmill Thin Project Area

<sup>1</sup> These LOP's may be lifted if year of action surveys using currently accepted protocols indicate specific areas are not occupied by breeding owls or with the mutual consent of the USFWS and the USFS.

<sup>2</sup> These LOP's may be lifted if year of action surveys using currently accepted protocols indicate specific areas are not occupied by breeding goshawks.

