

**Pilgrim Vegetation Management Project
Alternative III - Proposed Action Modified
Meets GTR Guidelines**

- Proposed Assessment Area
- Intermittent Stream (Ground Surveyed)

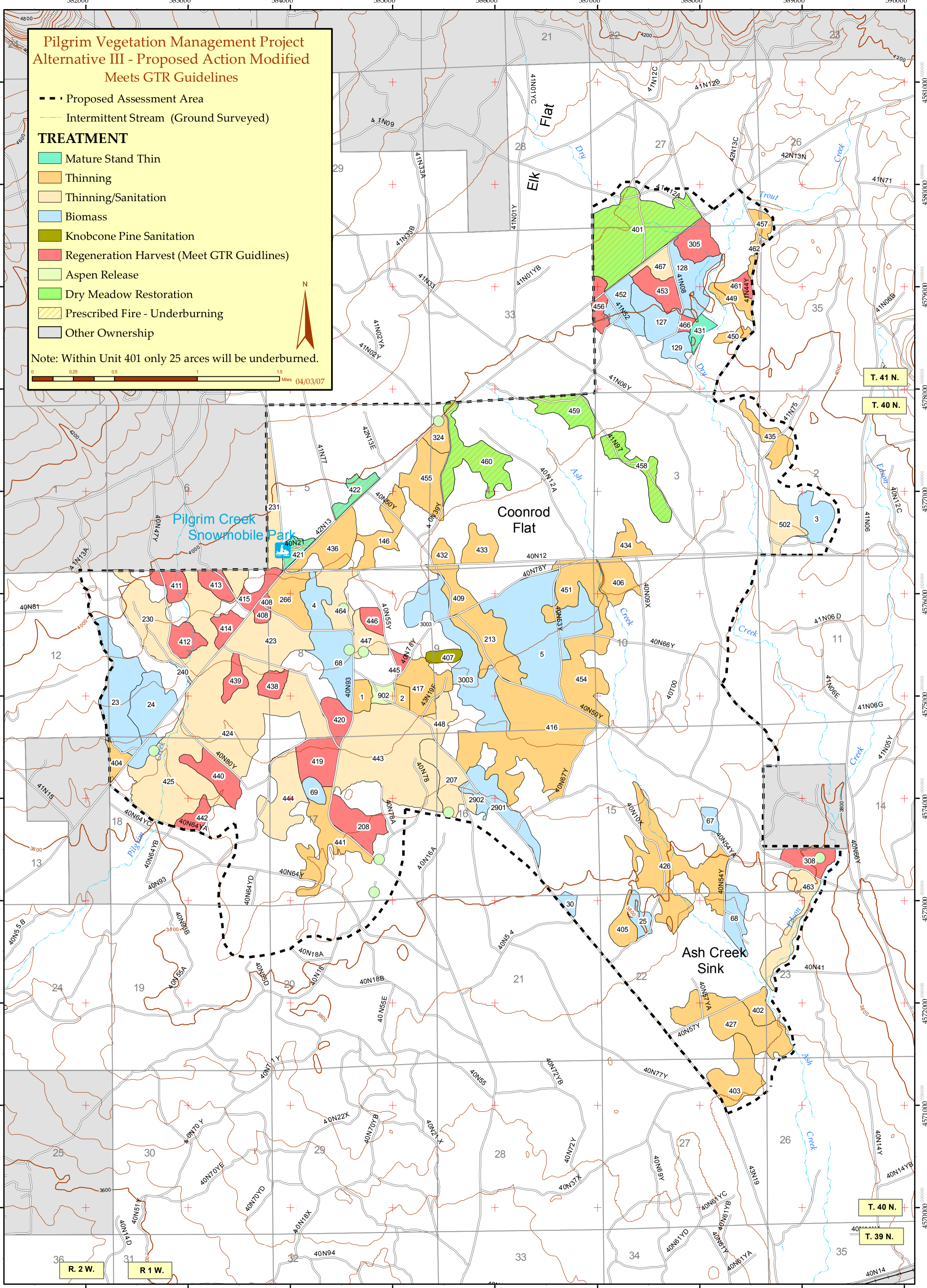
TREATMENT

- Mature Stand Thin
- Thinning
- Thinning/Sanitation
- Biomass
- Knobcone Pine Sanitation
- Regeneration Harvest (Meet GTR Guidelines)
- Aspen Release
- Dry Meadow Restoration
- Prescribed Fire - Underburning
- Other Ownership

Note: Within Unit 401 only 25 acres will be underburned.



0 0.25 0.5 1 1.5 Miles 04/03/07



T. 41 N.

T. 40 N.

T. 40 N.

T. 39 N.

R. 2 W.

R. 1 W.