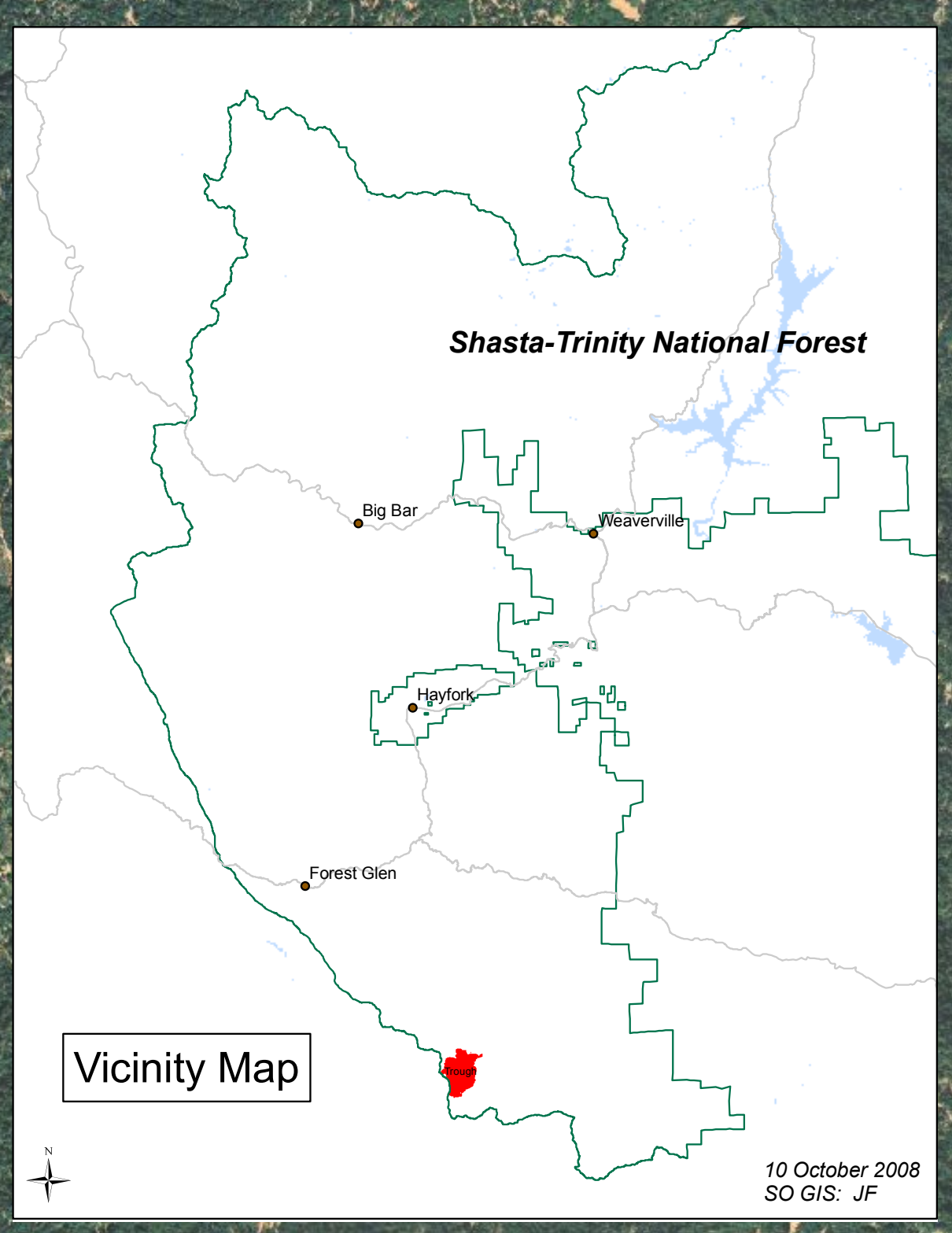


Vegetation Burn Severity: Trough Fire (Lime Complex)



Legend

**Vegetation Burn Severity:
Estimated Basal Area Mortality**

- 1-24%
- 25-74%
- >74%

Forest Boundary

Fire Perimeter

Vegetation Burn Severity is based on 30-meter satellite imagery, and has not been ground-verified (in process).
Spatial precision on photo imagery data (2005) is 1-meter.
When post-fire imagery is acquired after mid-September, severity may be increasingly under-represented due to low sun angles. Severity on north-facing slopes can be hidden due to topographic shadows. Low to moderate severity in dense stands on east, west or south aspects may also be under-represented due to a low illumination angle.

Disclaimer:

The Forest Service uses the most current and complete data available. GIS data and product accuracy may vary. Data may be developed from sources of differing accuracy, accurate only at certain scales, based on modeling or interpretation, incomplete while being created or revised. Using GIS products for purposes other than those for which they were created, may yield inaccurate or misleading results.

The Forest Service reserves the right to correct, update, modify, or replace, GIS products without notification. For more information, contact:

Shasta-Trinity National Forest
3644 Avtech Parkway
Redding, CA 96002