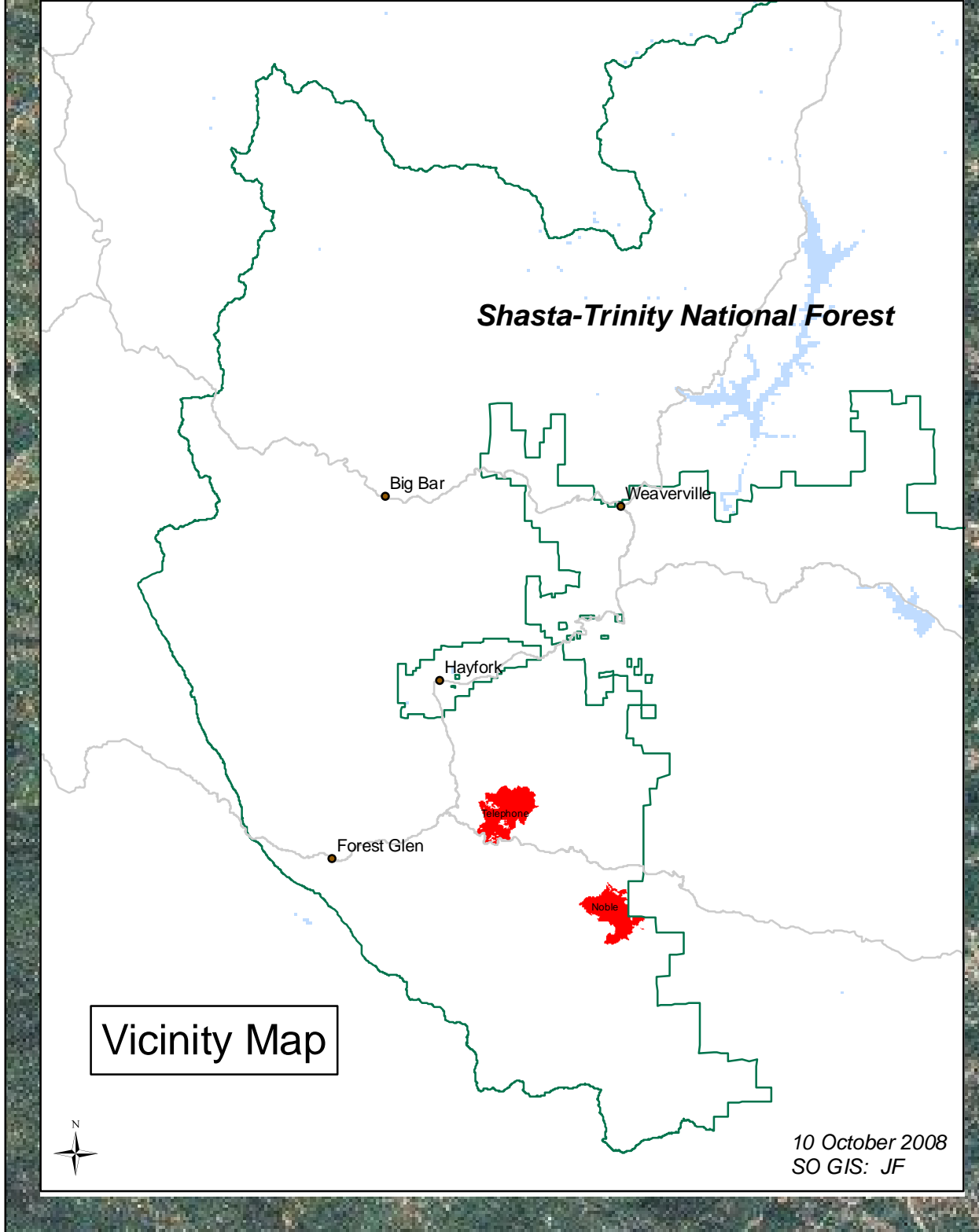
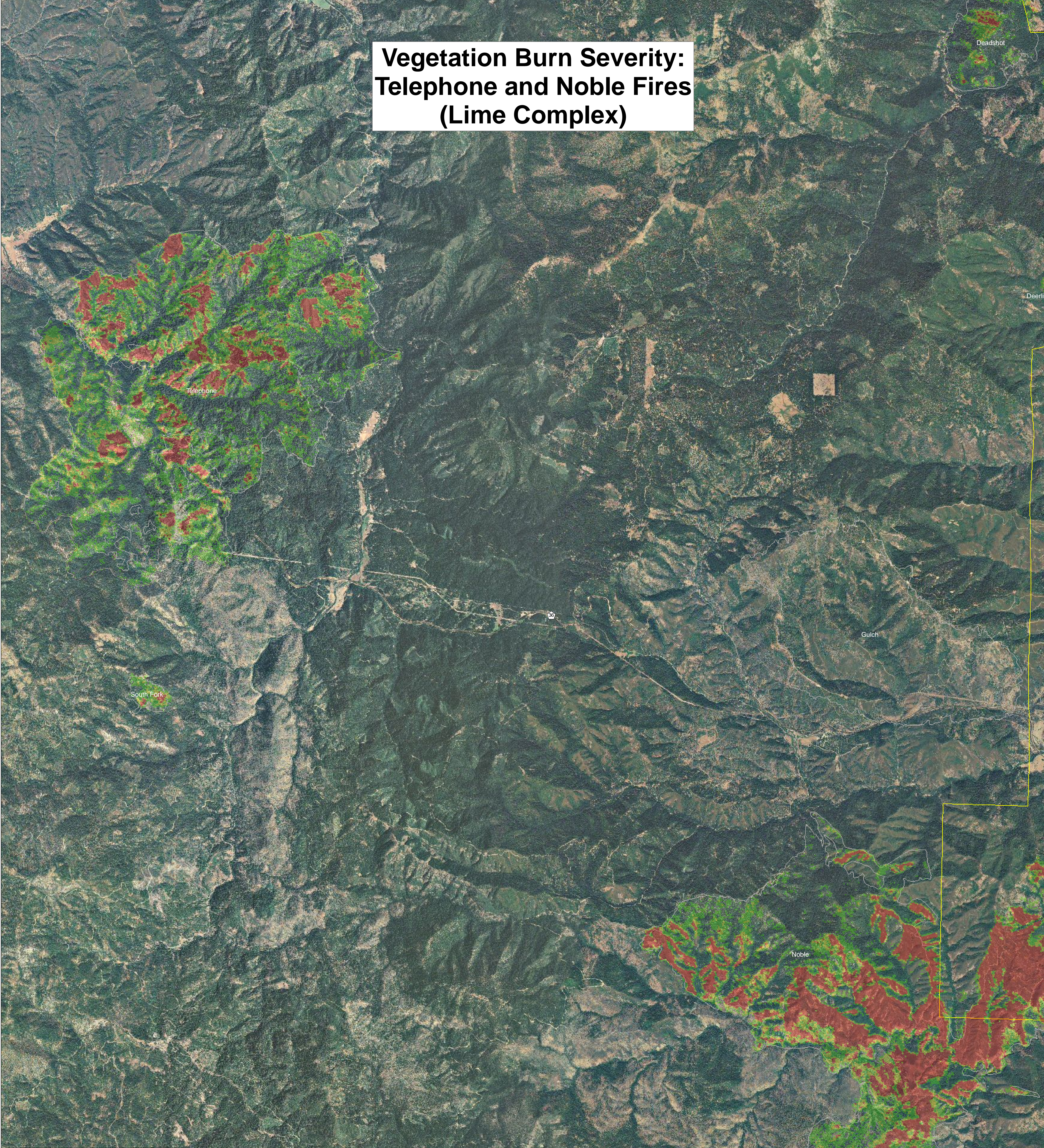


Vegetation Burn Severity: Telephone and Noble Fires (Lime Complex)



Legend

- Hwy_marker
- State Highway

**Vegetation Burn Severity:
Estimated Basal Area Mortality**

- 1-24%
- 25-74%
- >74%

- Forest Boundary
- Fire Perimeter

1:22,000

Vegetation Burn Severity is based on 30-meter satellite imagery, and has not been ground-verified (in process).
Spatial precision on photo imagery data (2005) is 1-meter.

Disclaimer:

The Forest Service uses the most current and complete data available. GIS data and product accuracy may vary. Data may be developed from sources of differing accuracy, accurate only at certain scales, based on modeling or interpretation, incomplete while being created or revised. Using GIS products for purposes other than those for which they were created, may yield inaccurate or misleading results.

The Forest Service reserves the right to correct, update, modify, or replace, GIS products without notification. For more information, contact:

Shasta-Trinity National Forest
3644 Avtech Parkway
Redding, CA 96002