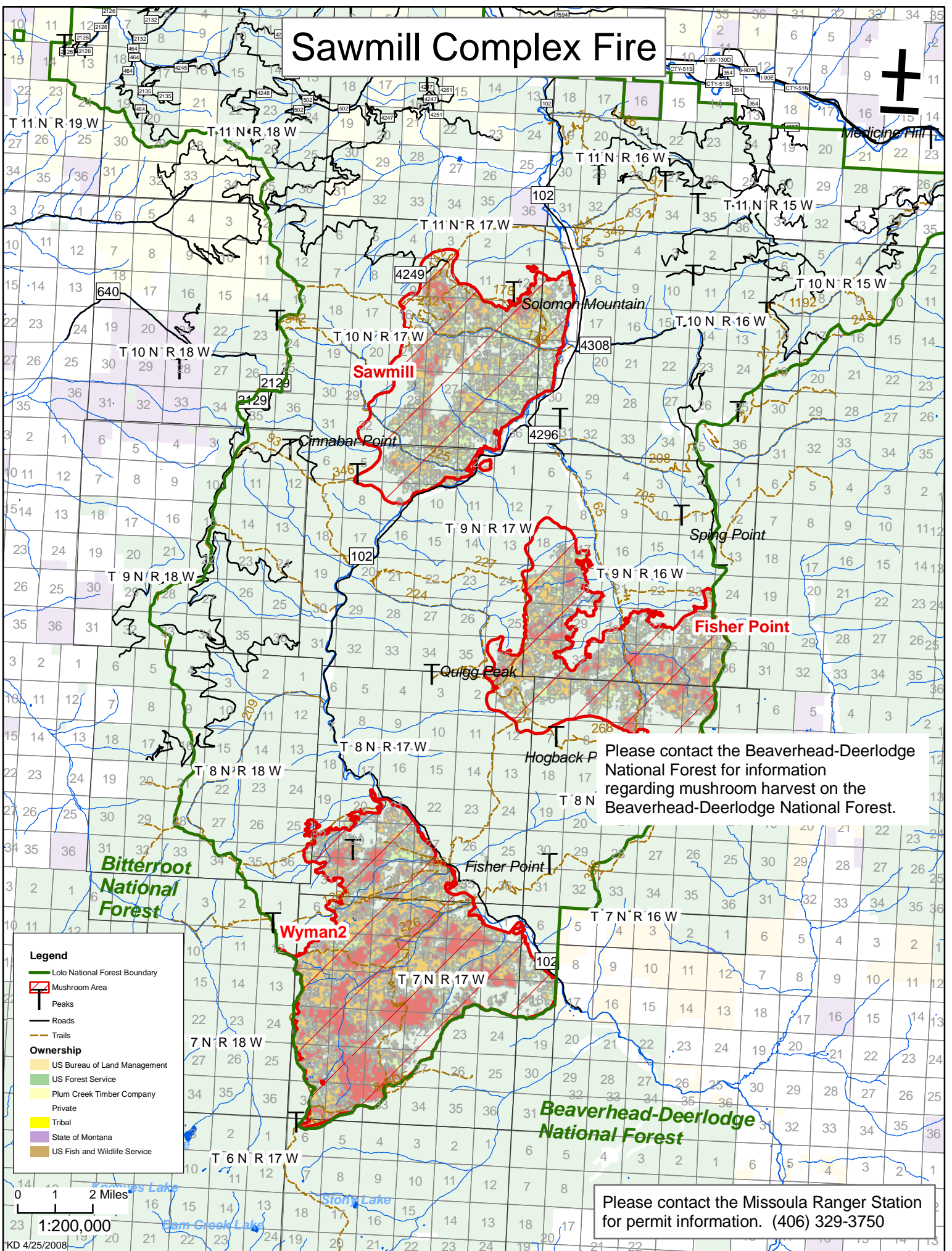


Sawmill Complex Fire



Sawmill

Solomon Mountain

Cinnabar Point

Fisher Point

Quigg Peak

Hogback P

Bitterroot National Forest

Beaverhead-Deerlodge National Forest

Wyman2

Legend

- Lolo National Forest Boundary
- Mushroom Area
- Peaks
- Roads
- Trails

Ownership

- US Bureau of Land Management
- US Forest Service
- Plum Creek Timber Company
- Private
- Tribal
- State of Montana
- US Fish and Wildlife Service

Please contact the Beaverhead-Deerlodge National Forest for information regarding mushroom harvest on the Beaverhead-Deerlodge National Forest.

Please contact the Missoula Ranger Station for permit information. (406) 329-3750

0 1 2 Miles

1:200,000

KD 4/25/2008