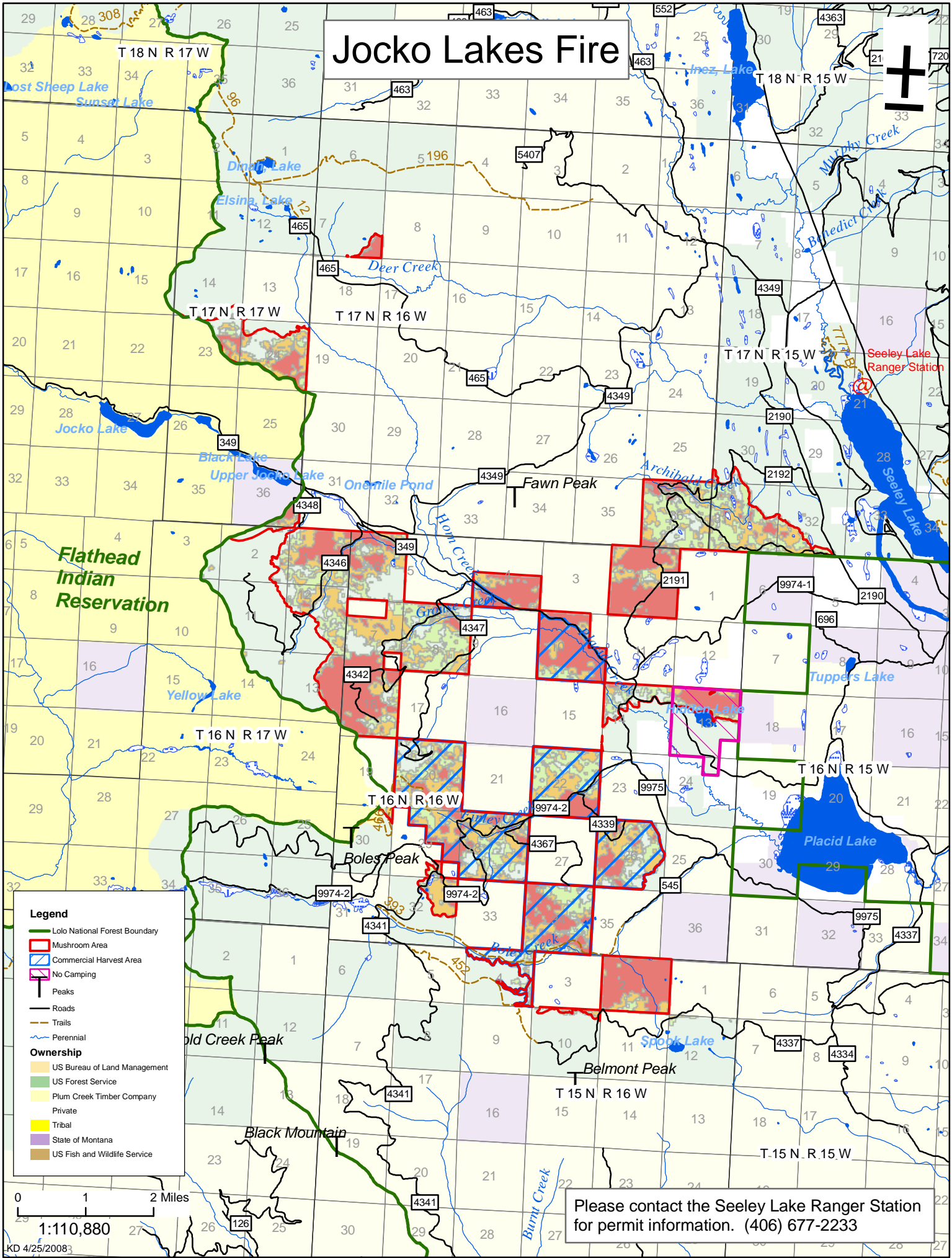


Jocko Lakes Fire



Legend

- Lolo National Forest Boundary
- Mushroom Area
- Commercial Harvest Area
- No Camping
- Peaks
- Roads
- Trails
- Perennial
- Ownership**
- US Bureau of Land Management
- US Forest Service
- Plum Creek Timber Company
- Private
- Tribal
- State of Montana
- US Fish and Wildlife Service

Please contact the Seeley Lake Ranger Station for permit information. (406) 677-2233