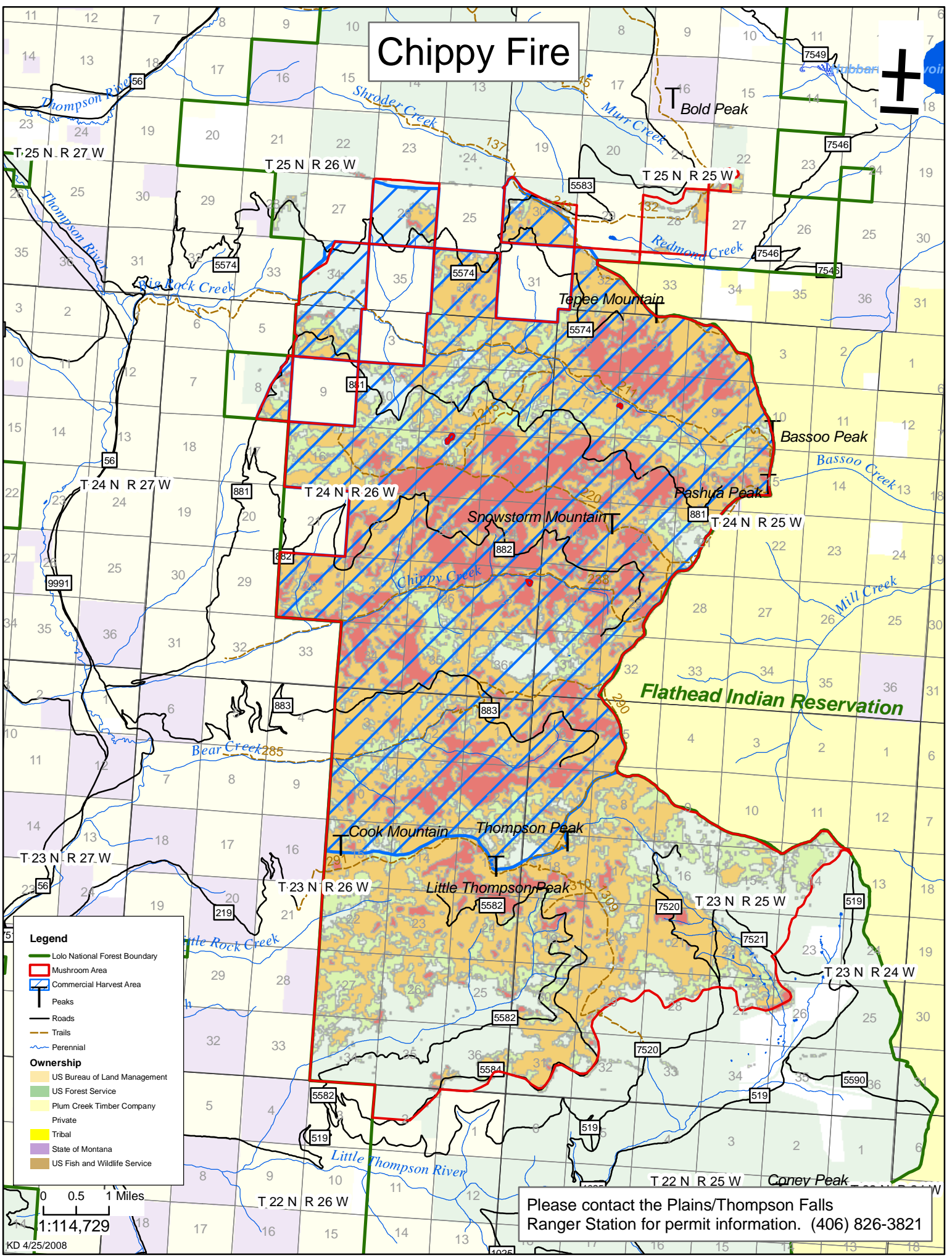


Chippy Fire

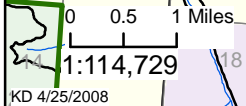


Legend

- Lolo National Forest Boundary
- Mushroom Area
- Commercial Harvest Area
- Peaks
- Roads
- Trails
- Perennial

Ownership

- US Bureau of Land Management
- US Forest Service
- Plum Creek Timber Company
- Private
- Tribal
- State of Montana
- US Fish and Wildlife Service



Please contact the Plains/Thompson Falls Ranger Station for permit information. (406) 826-3821