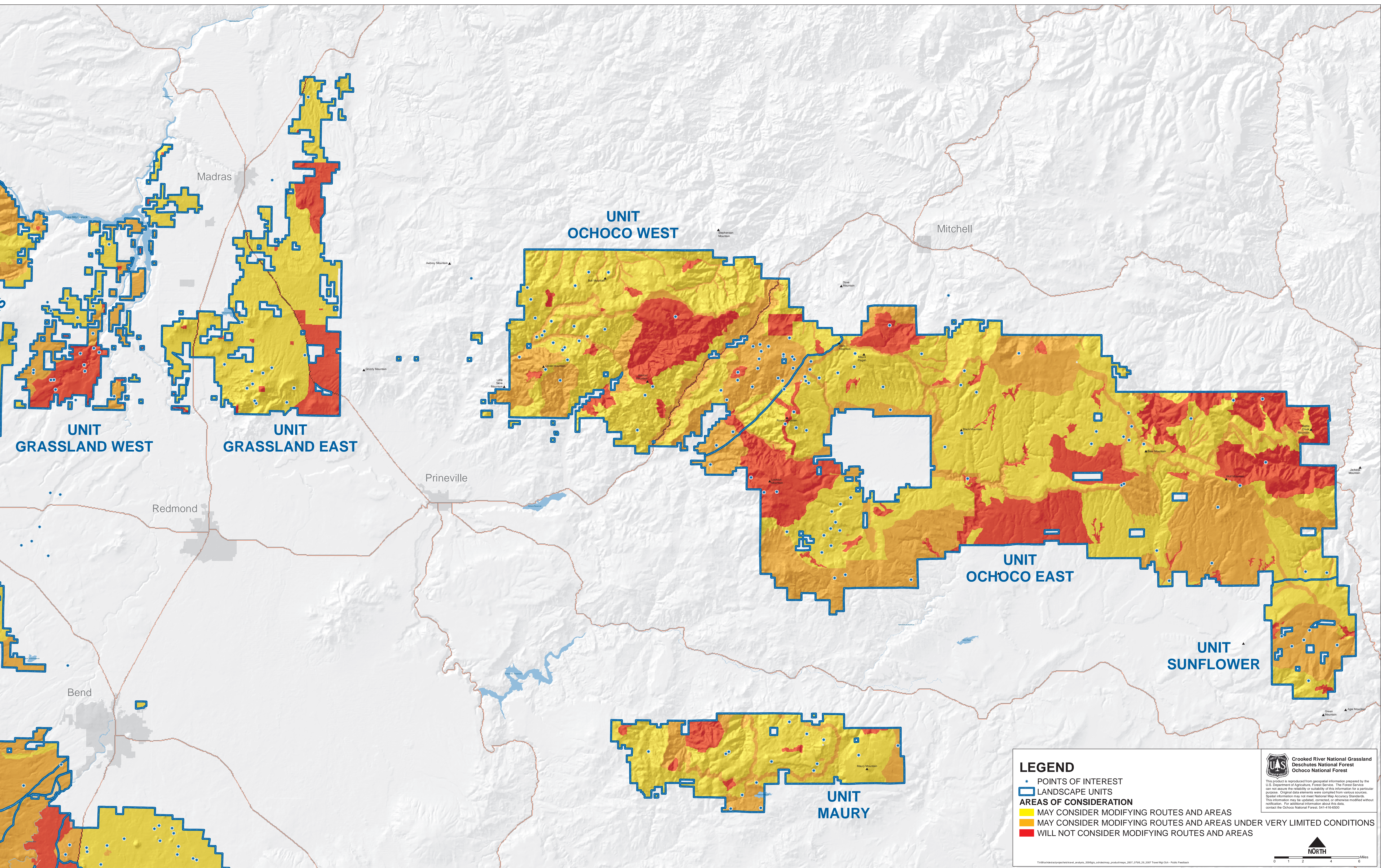


2006 PUBLIC FEEDBACK

Travel Management Project
Crooked River National Grassland / Ochoco National Forest



LEGEND

- POINTS OF INTEREST
- ▭ LANDSCAPE UNITS
- AREAS OF CONSIDERATION**
 - MAY CONSIDER MODIFYING ROUTES AND AREAS
 - MAY CONSIDER MODIFYING ROUTES AND AREAS UNDER VERY LIMITED CONDITIONS
 - WILL NOT CONSIDER MODIFYING ROUTES AND AREAS

**Crooked River National Grassland
Deschutes National Forest
Ochoco National Forest**

This product is reproduced from geospatial information prepared by the U.S. Department of Agriculture, Forest Service. The Forest Service can not assure the reliability or suitability of this information for a particular purpose. Original data elements were compiled from various sources. Spatial information may not meet National Map Accuracy Standards. This information may be updated, corrected, or otherwise modified without notification. For additional information about this data, contact the Ochoco National Forest, 541-416-6550.

NORTH

0 1 2 4 6 Miles

T:\Work\ar\project\travel_mgmt_2006\figs\landscape_mgmt_2007_0708_25_2007_TSMF_Maps_Dot_Public_Feedback