

# McKay Creek Watershed

## 2007/2008



### Emergency Motorized Closure Area Ochoco National Forest

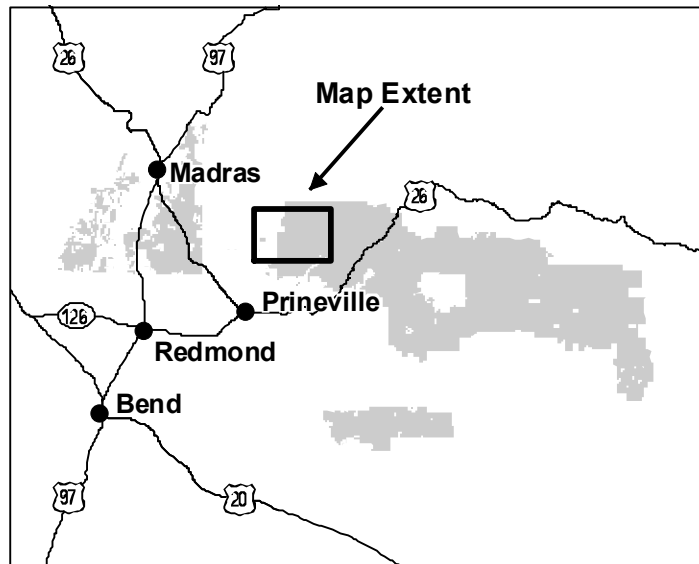
#### Period of Restriction:

**Dec. 1, 2007 - EXTENDED to June 30, 2008**

Only those roads shown as open, are available to motorized vehicles during the period of restrictions. Motorized vehicle travel within the Emergency Closure Area boundary on all other roads, trails, and cross-country is prohibited except by special permit from the Ochoco National Forest. This restriction also applies to snow machines. Dispersed camping will be allowed up to 300 feet from open roads.

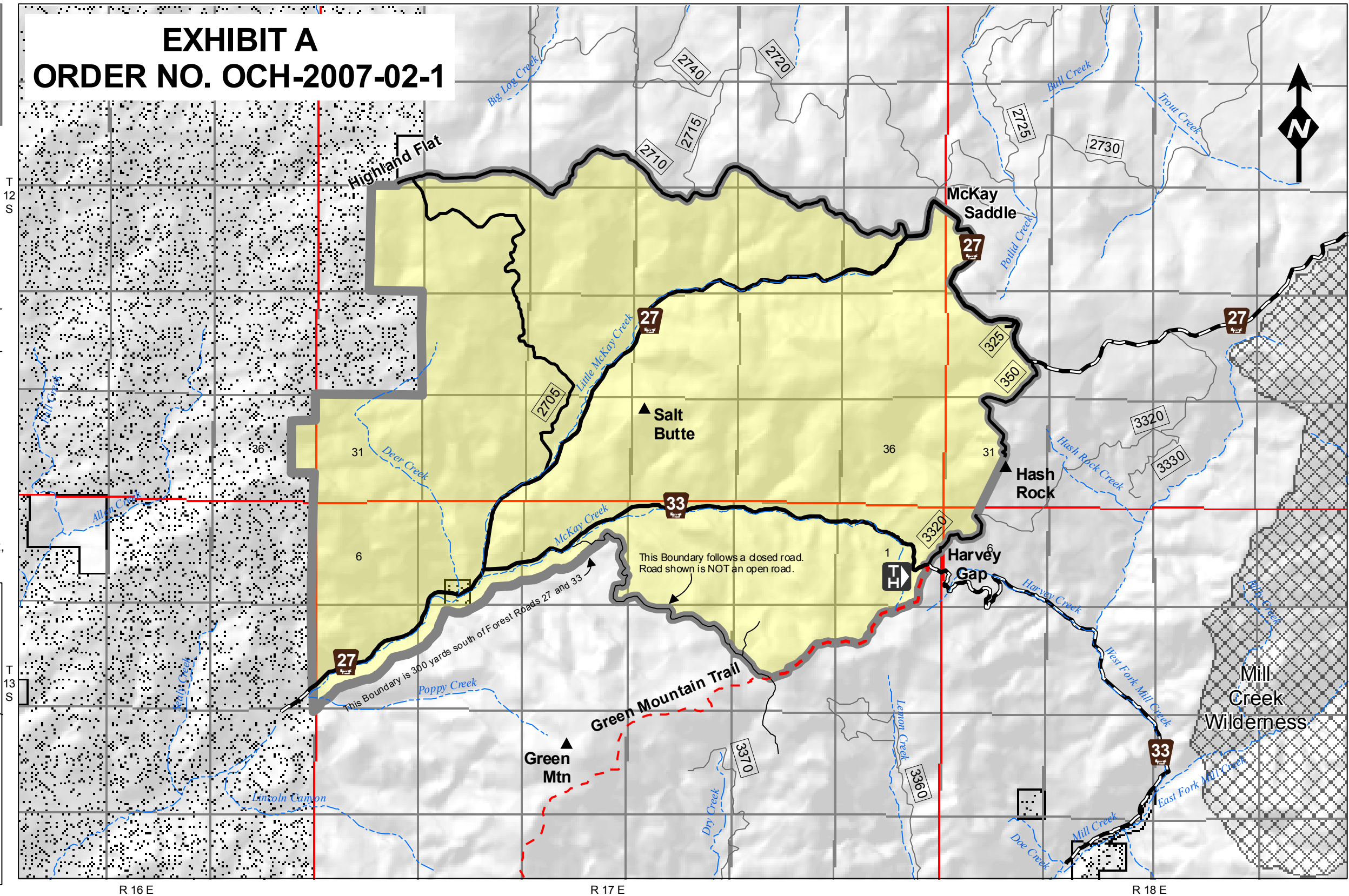
Violation of the Emergency Closure Order is punishable by up to a \$5,000 fine or imprisonment for up to six months, or both.

During the period of closure, normal management activities will be in process; including logging, slash disposal, law enforcement, biological surveys, and grazing management.



# EXHIBIT A

## ORDER NO. OCH-2007-02-1



The U.S. Department of Agriculture (USDA) prohibits discrimination in all its programs and activities on the basis of race, color, national origin, age, disability, and where applicable, sex, marital status, familial status, parental status, religion, sexual orientation, genetic information, political beliefs, reprisal, or because all or part of an individual's income is derived from any public assistance program. (Not all prohibited bases apply to all programs.) Persons with disabilities who require alternative means for communication of program information (Braille, large print, audiotape, etc) should contact USDA's TARGET Center at (202) 720-2600 (voice and TDD).

To file a complaint of discrimination, write to USDA, Director, Office of Civil Rights, 1400 Independence Avenue, S.W., Washington, D.C. 20250-9410, or call (800) 795-3272 (voice) or (202) 720-6382 (TDD). USDA is an equal opportunity provider and employer.

- Emergency Closure Area
- Private Lands
- Streams
- Trail Head
- Open Roads
- Open Trail
- Main Roads
- Other Roads



### OPEN ROUTES:

The Following routes inside the Emergency Closure Area that are open to:

Street legal cars, trucks and motorcycles include:

- 27, 2705, 2710, 33, 3320, 325 and 350

Non-street legal vehicles (motorcycles, ATV's, 6x6's, 8x8's and snow machines) include:

- 2705, 2710, 3320, 325, 350 and the Green Mountain Trail

Ochoco National Forest  
3160 NE Third Street  
Prineville, Oregon 97754  
(541) 416-6500

This map has no warranties to its contents or accuracy.

**tread lightly!**  
LEAVING A GOOD IMPRESSION

