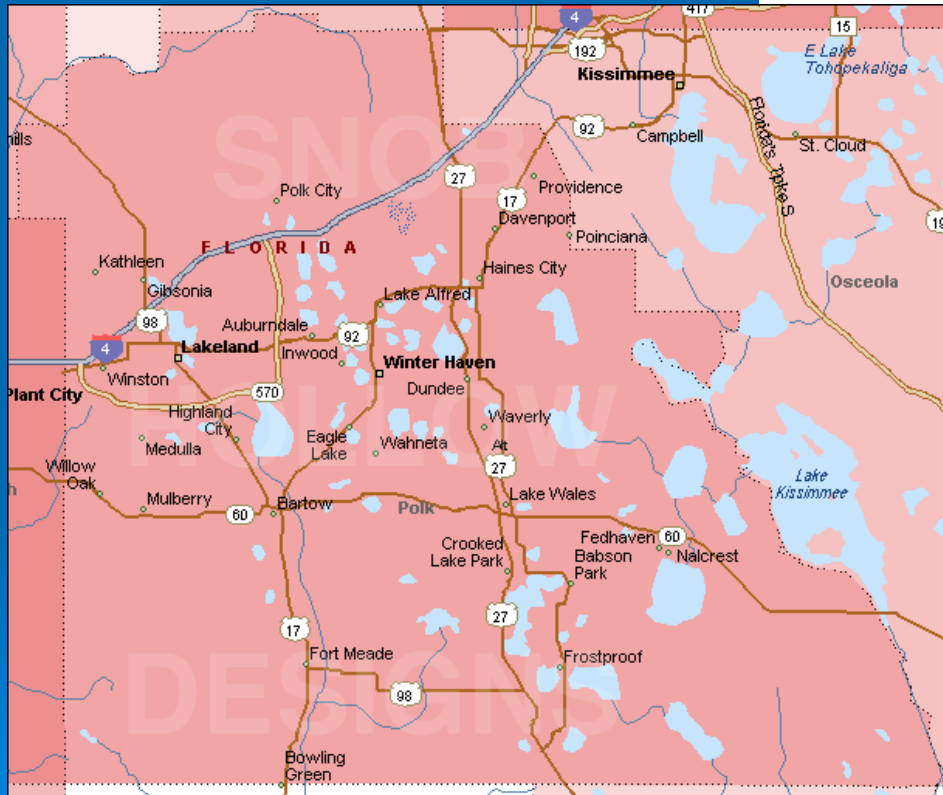
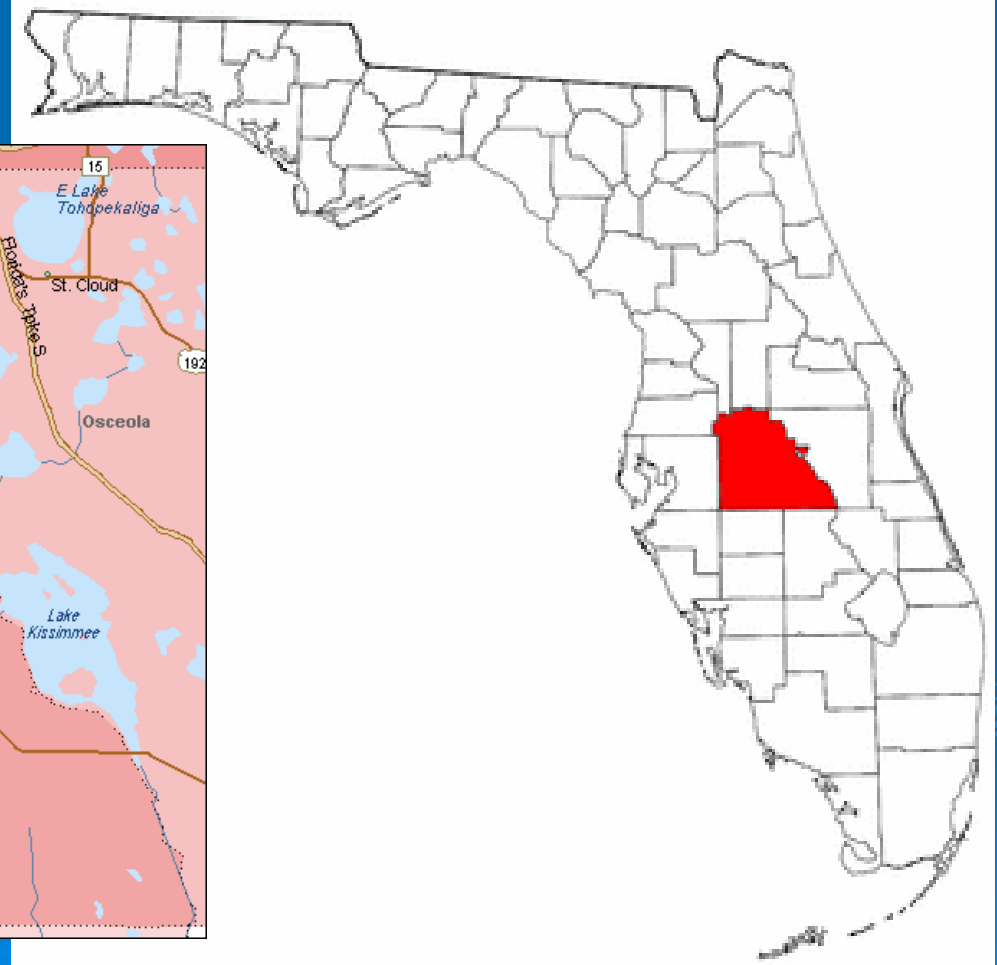


Development of a Health Impact Assessment Protocol for Polk County, Florida

Timothy G. Mayer, RS, MPH
National Environmental Public Health Leadership Institute 2005-2006

The bottom right portion of the slide features several decorative, semi-transparent blue concentric circles of varying sizes, resembling ripples in water, set against the solid blue background.

Polk County, Florida



2005 Population Figures for Polk County

Final 2005 population estimates for Polk County, completed by economists from the University of Florida Bureau of Economic and Business Research, shows Polk's growth rate continuing at a rapid pace through the first half of the decade. In the five years after the 2000 U.S. Census, Polk County posted a 12 percent increase in population while the state had a 12.1 percent increase.

Lake Wales is still the fastest-growing municipality in Polk, followed by Haines City and Davenport, then Lakeland and Polk City.

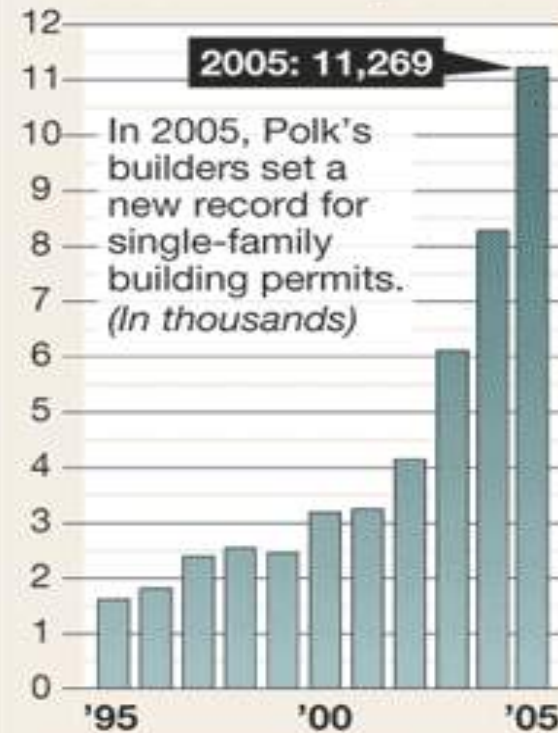


	2005 UNIV. OF FLA. ESTIMATE	2000 U.S. CENSUS	NUMERICAL INCREASE	PERCENT INCREASE
Florida	17,918,227	15,982,824	1,935,403	12.1%
Polk County	541,840	483,924	57,916	12.0
Auburndale	11,975	11,032	943	8.5
Bartow	16,043	15,340	703	4.6
Davenport	2,307	1,924	383	19.9
Dundee	2,957	2,912	45	1.5
Eagle Lake	2,521	2,496	25	1.0
Fort Meade	5,833	5,691	142	2.5
Frostproof	2,959	2,975	-16	-0.6
Haines City	15,905	13,174	2,731	20.7
Highland Park	246	244	2	0.8
Hillcrest Heights	260	266	-6	-2.2
Lake Alfred	4,043	3,890	153	3.9
Lake Hamilton	1,405	1,304	101	7.7
Lake Wales	12,390	10,194	2,196	21.5
Lakeland	90,851	78,452	12,399	15.8
Mulberry	3,433	3,230	203	6.3
Polk City	1,738	1,516	222	14.6
Winter Haven	28,724	26,487	2,237	8.4
Unincorporated	338,250	302,797	35,453	11.7

SOURCE: The Bureau of Economic and Business Research, University of Florida, 2005 estimates and The U.S. Census Bureau's 2000 census.

The Ledger

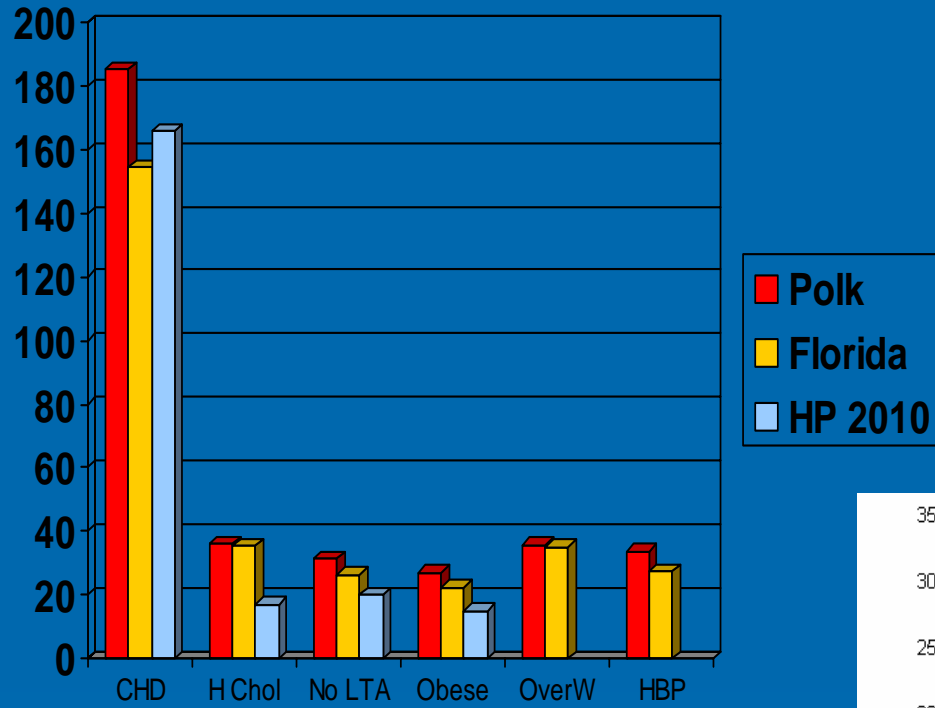
Record Repeat



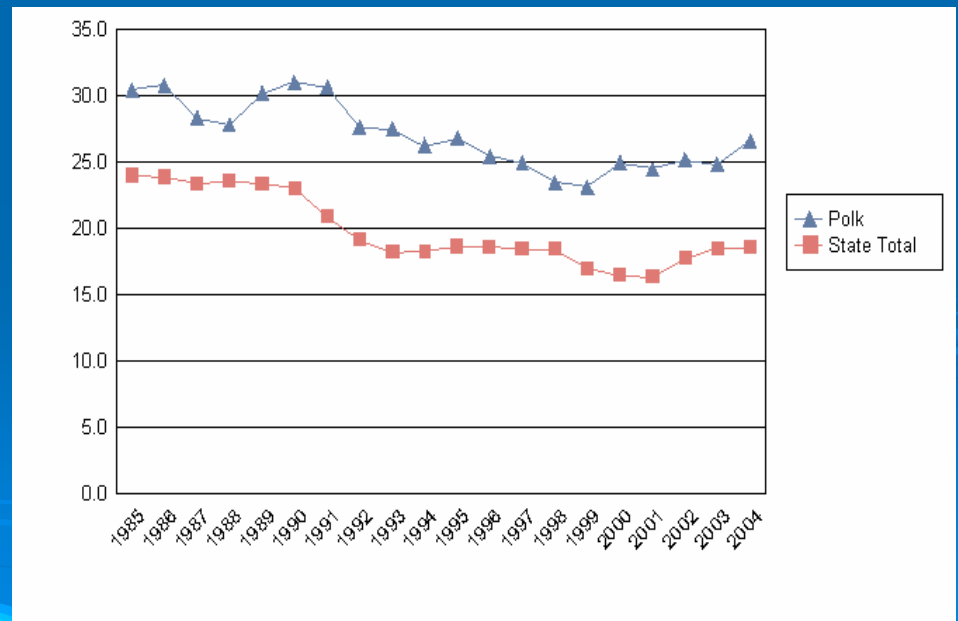
SOURCE: Ledger research, Jan. 19, 2006

The Ledger


Chronic Disease Profile



Motor Vehicle Death Rate



What can we do about it?

- Educational efforts and programs
 - Change the design of where we live, work and play.
- 

Who is involved?

- Health Department – medical community
- Planners – growth management
- Developers – builders, designers
- Politics – planning commission, BOCC
- Communities – PACE-EH process

How do we change?

- Most of Polk's development is PUDs and subdivisions
 - Institute a Health Impact Assessment (HIA) process for those types of developments
- 

HIA tool

- Point system based on design components that increase physical activity and build a sense of community
 - Sidewalks, green space, “walkability”, landscaping, recreation facility, proximities, construction standards, connectivity, etc.

How do we do HIA?

- Active participation in the existing development review process
- Current – DRC, limited
- Future – Incentives
 - rule revisions

Incentives

- Threshold score earns
 - designation as a
“Healthy Design Community”
 - expedited permitting

Rule Revisions

- Development Review Committee (DRC) attendance and participation
- Polk County Land Development Code (LDC) revision to include HIA process

Expected Results

- Increased physical activity
- Less traffic
- Improved health status indicators
- Healthier communities

- Increased property values

- Enhanced presence of HD (EH)

National Goals Supported

➤ Healthy People 2010

- Area 7, Community-based programs
- Area 8, Environmental Health, outdoor air, drinking water, healthy homes sections
- Area 15, Injury Prevention
- Area 22, Physical Activity and Fitness

➤ 10 Essential Services of EH

- Monitor Health; Inform, Educate, Empower; Mobilize Community Partnerships; Develop Policies

➤ National Strategy to Revitalize EPH Services

- Promote Strategic Partnerships; PACE-EH; Identify Stakeholders; Regular Communication

Timothy G. Mayer, RS, MPH
Environmental Administrator
Polk County Health Department
2090 East Clower Street
Bartow, Florida 33830-6741

Timothy_Mayer@doh.state.fl.us

