

SPIDERS: KEY TO SOME IMPORTANT UNITED STATES SPECIES

Harold George Scott & Chester J. Stojanovich

1. Fangs projecting horizontally (Fig. 1 A). (abdomen without tergites; tarsus with claw tufts and 2 claws)Dugesiella hentzi and others, TARANTULAS
- Fangs projecting vertically (Fig. 1 B).....2



Fig. 1 A

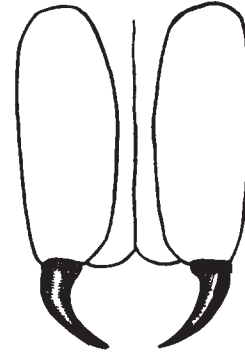
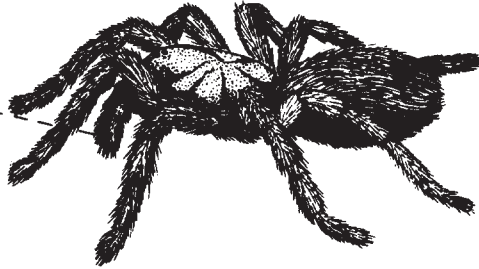


Fig. 1 B

2. Six eyes in 3 pairs; fiddle-shaped marking on cephalothorax (Fig. 2 A).....Loxosceles reclusa.....BROWN RECLUSE SPIDERS

Eight eyes (shiny black with red spots; usually with red hourglass on underside of abdomen) (Fig. 2 B).
Latrodectus mactans..... BLACK WIDOW SPIDER

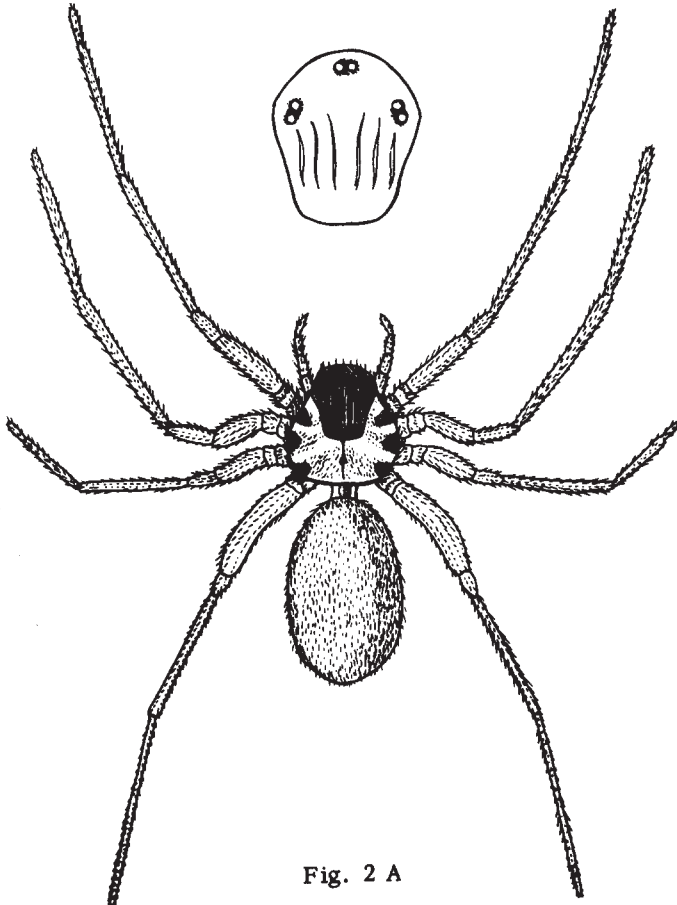


Fig. 2 A

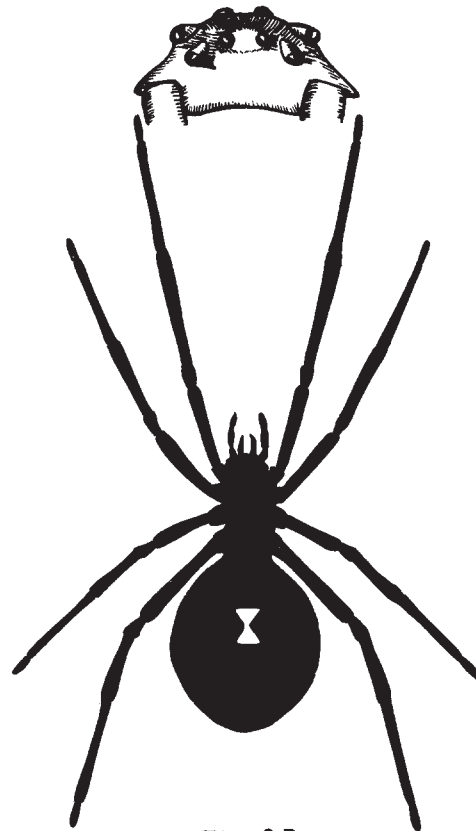


Fig. 2 B