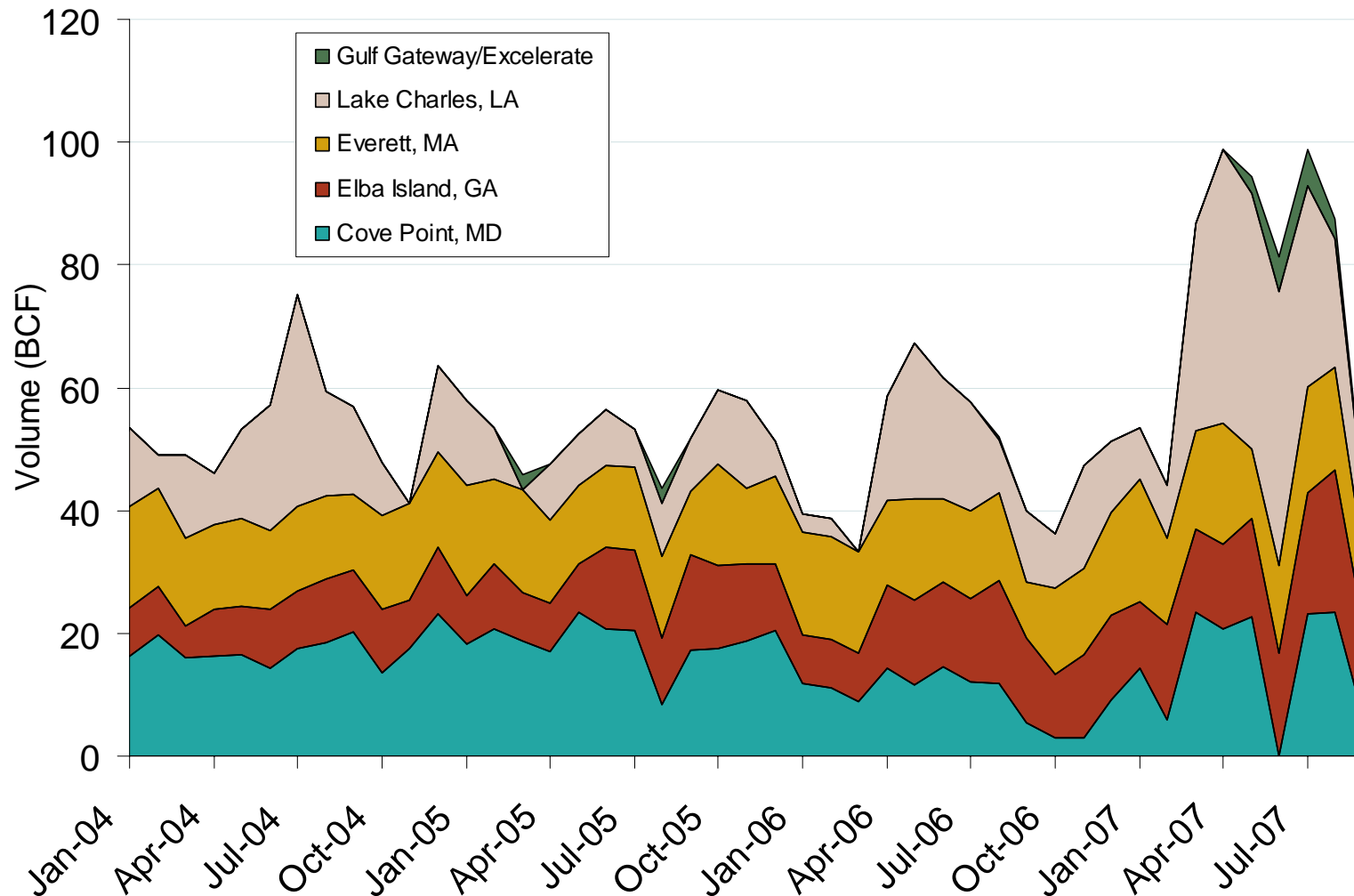


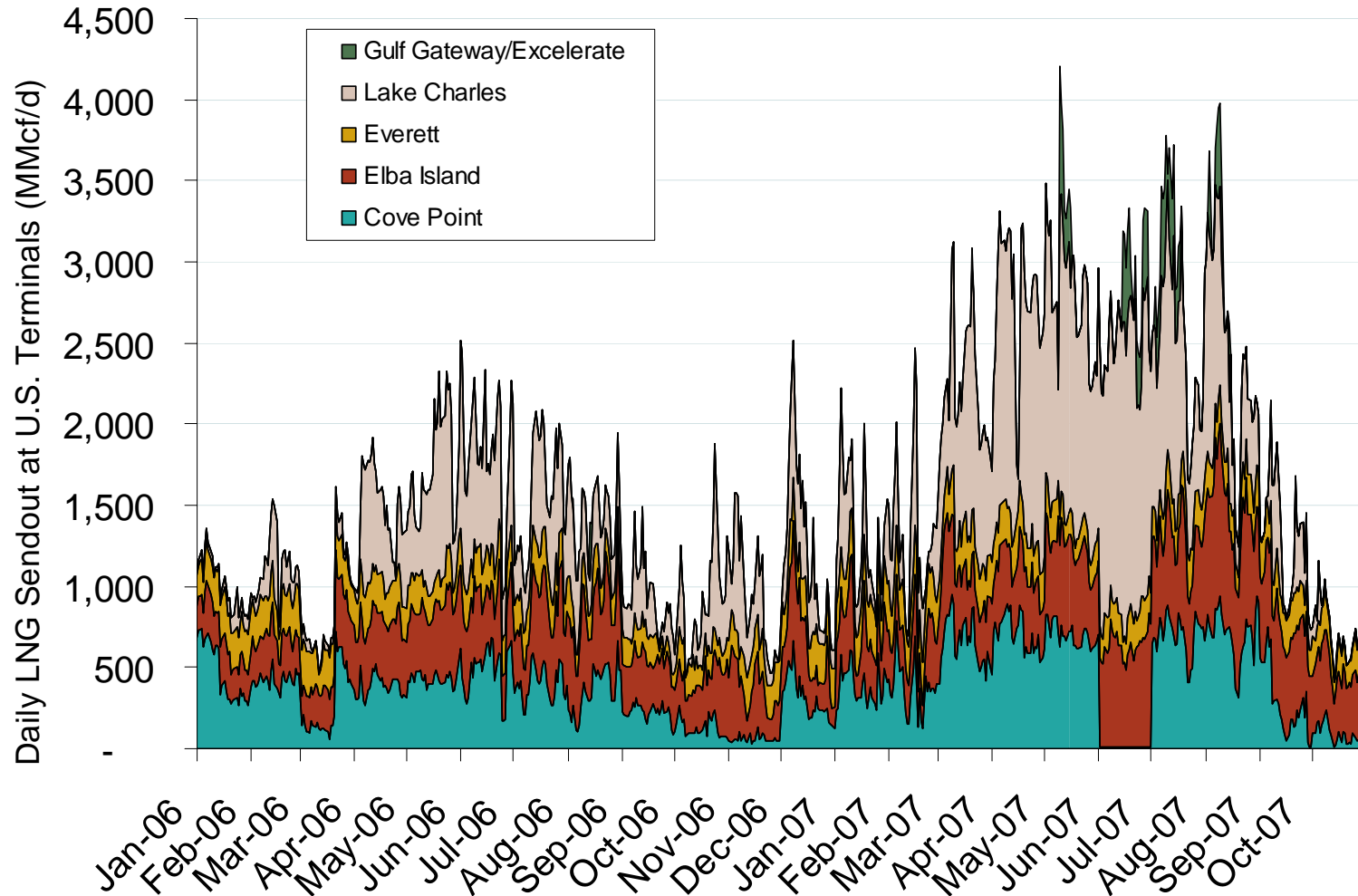
## Monthly Gas Imports at Existing U.S. LNG Facilities



Source: Derived from EIA data.

Updated November 3, 2007

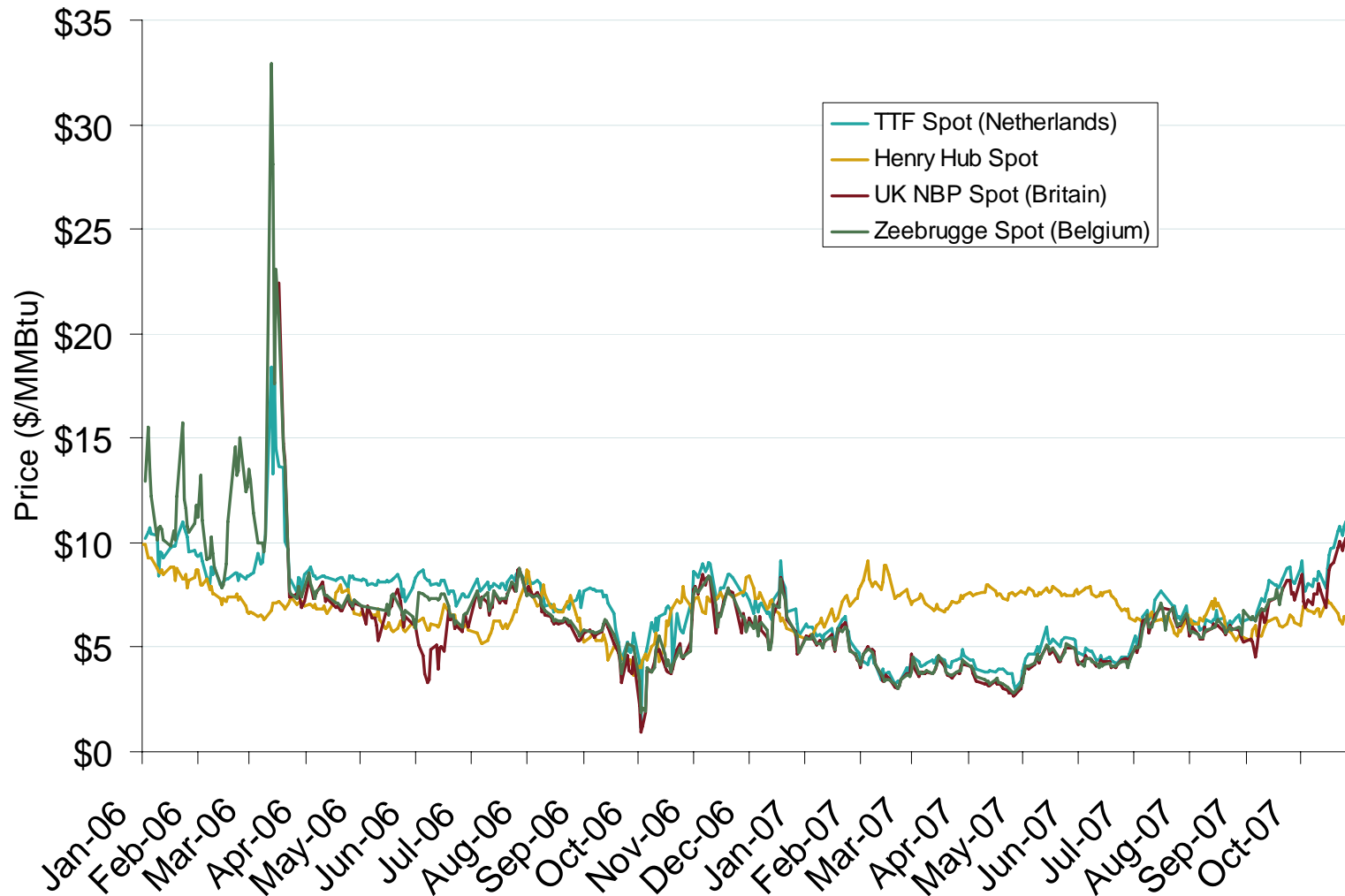
## Daily Gas Sendout from Existing U.S. LNG Facilities



Source: Derived from *Bentek* data. Excludes Everett LNG delivered via truck and consumed by the Mystic plant.

Updated November 2, 2007

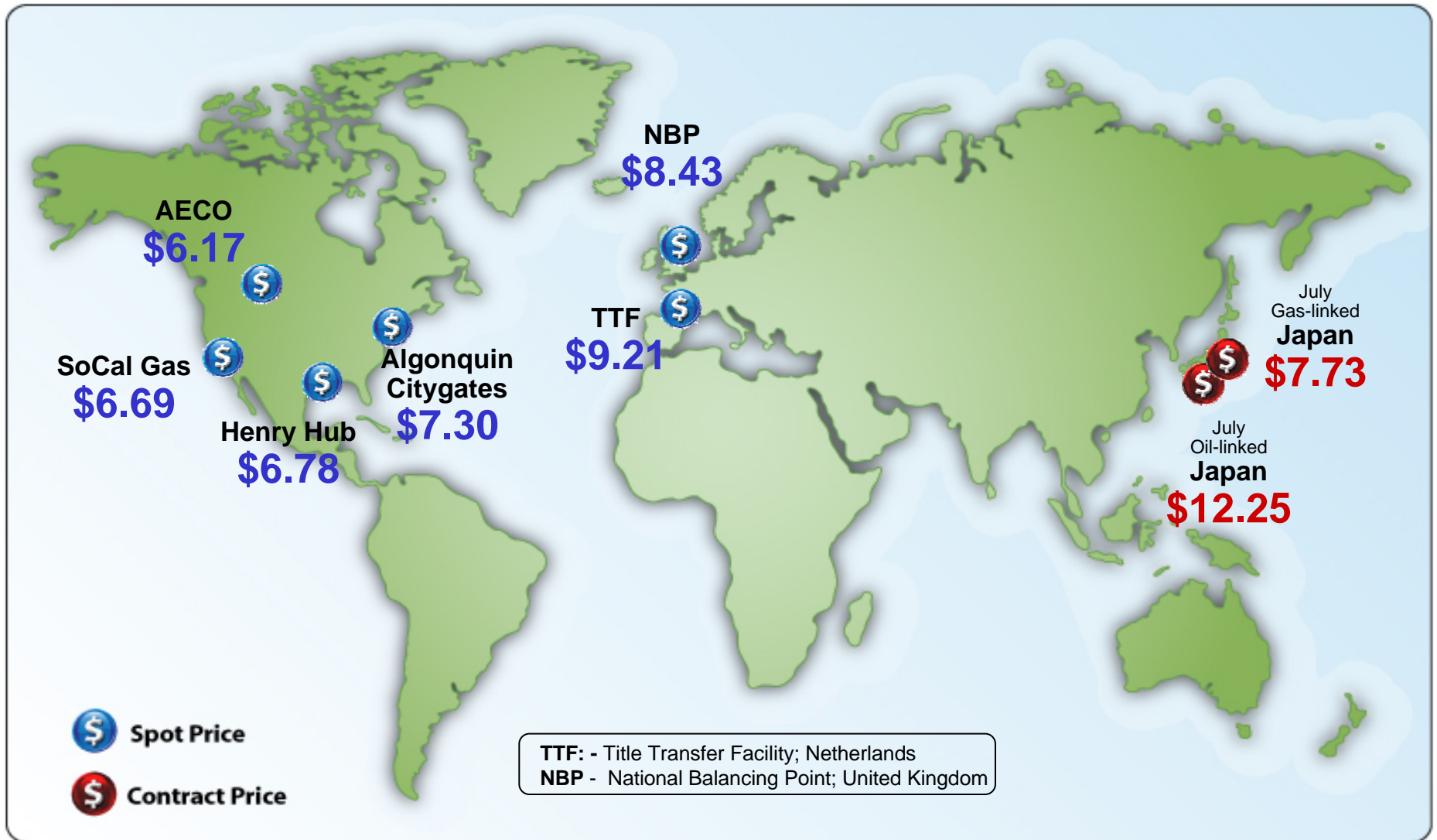
## European and U.S. Spot Natural Gas Prices



Source: Derived from Bloomberg and ICE data.

Updated November 2, 2007

## World Natural Gas Prices for September 2007



Source: Derived from *Bloomberg, ICE, ICAP and LNG Japan Corp.* data. Spot Price is a monthly average of daily prices. Contract Price is a monthly price. All prices in \$US/MMBtu.

Updated November 2, 2007

3017