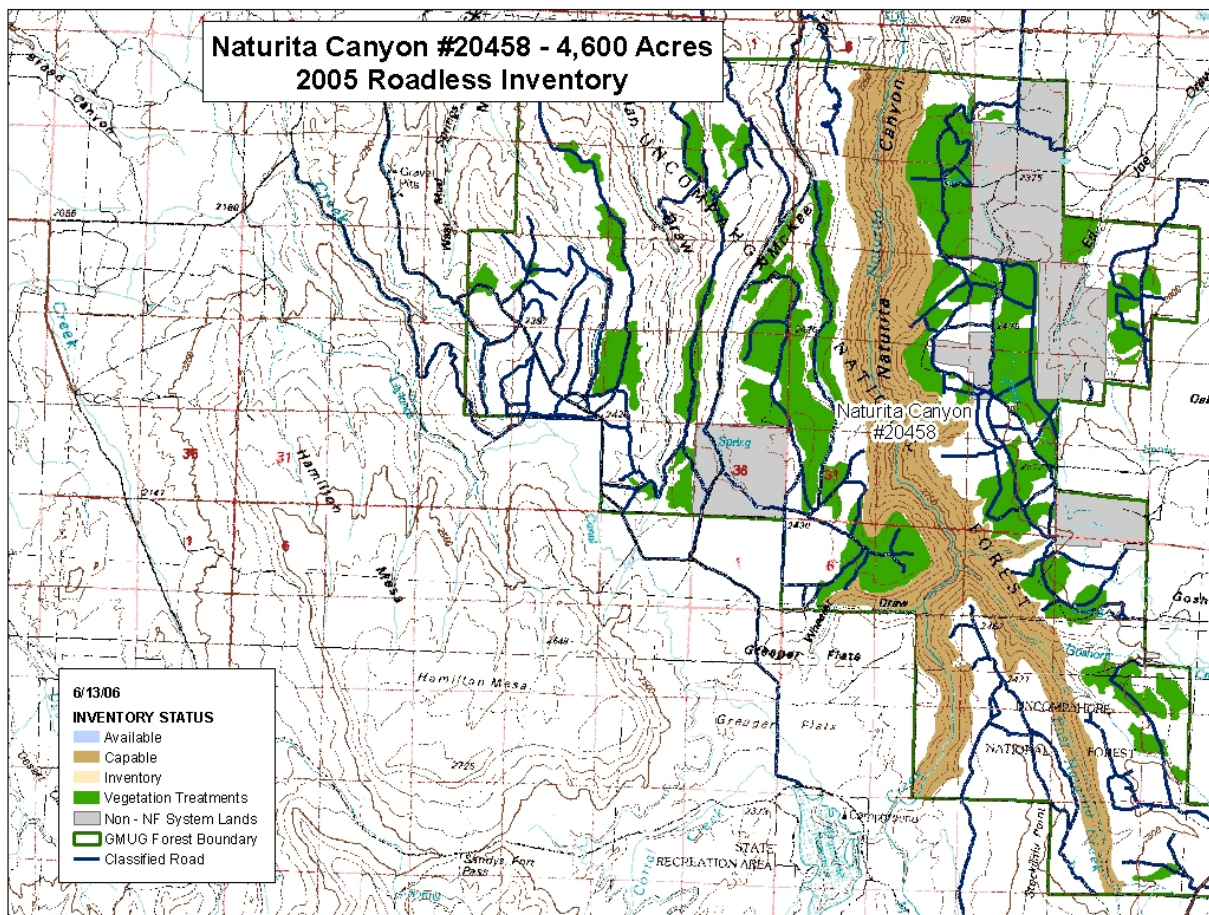


Naturita Canyon #20458 – 4,600 Acres – San Miguel County

General Description: The area is located approximately five miles southwest of Norwood, within the Naturita Division of the Uncompahgre National Forest. The Naturita Division is an isolated tract of the National Forest situated between Colorado State Highways 141 and 145. The division is just north of Miramonte Reservoir State Wildlife Area.



Elevation Range – 6,800' –8200'

Vegetation – The Potential Natural Vegetation is predominately 33% pinyon-juniper, 30% ponderosa pine, 7%, spruce-fir-aspen, 9% Douglas-fir, 8% cottonwood spruce, and 12% oak-serviceberry.

Ecoregion – M341B – Northern Canyon Lands (Intermountain Semi-Desert and Desert Province)

Land Type:

100% 30SX –Lower Montane climate zone; mixed sedimentary geology with moderately dissected plateaus, mesas, and canyons.

Resource Activities:Current & Ongoing:

- The West Naturita, East Naturita, and Portis cattle allotments are within this area.
- There are no managed trails within the area.
- The area is available for oil and gas leasing, but currently has no existing or pending oil and gas leases. The area is covered by Timing Limitations with Controlled Surface Use stipulations.

Wilderness Potential:Capability:

Environment –

- Naturalness – The area offers a high degree of naturalness.
- Solitude – The nature of the canyon terrain isolates the area from sights and sounds outside of the canyon, providing a sense of remoteness and solitude.

Challenge – Opportunities for adventure and self-reliance are available within this area.

Manageability/Boundaries –

- Size/Shape – The canyon terrain presents a natural shape and boundary for management.
- Boundaries – Even though the area is less than the 5,000 acre minimum size, it is a self-contained ecosystem. The natural boundary of the canyon rim provides identifiable and manageable boundaries.

Special Features/Activities – The area contains habitat for Mexican Spotted Owl. The area is adjacent to the San Miguel BLM Area of Critical Concern. The canyon provides suitable big game winter habitat and also serves as a travel corridor.

Evaluation: This area meets the criteria for capability and is considered to be **capable** of wilderness.

Availability:

Recreation – Fishing and hunting activities occur within the canyon, including one commercial hunting outfitter-guide.

Water – There are no water developments or diversions.

Timber – There are no suitable timber lands within this unit.

Minerals – The area is considered to have high mineral potential. There currently are several leases pending within this area.

Management Considerations – The area is currently available for lease and is covered by a Timing Limitation with Controlled Surface Use stipulation.

Evaluation – The area is **not available** for wilderness due to pending leases that cover over half of the area.

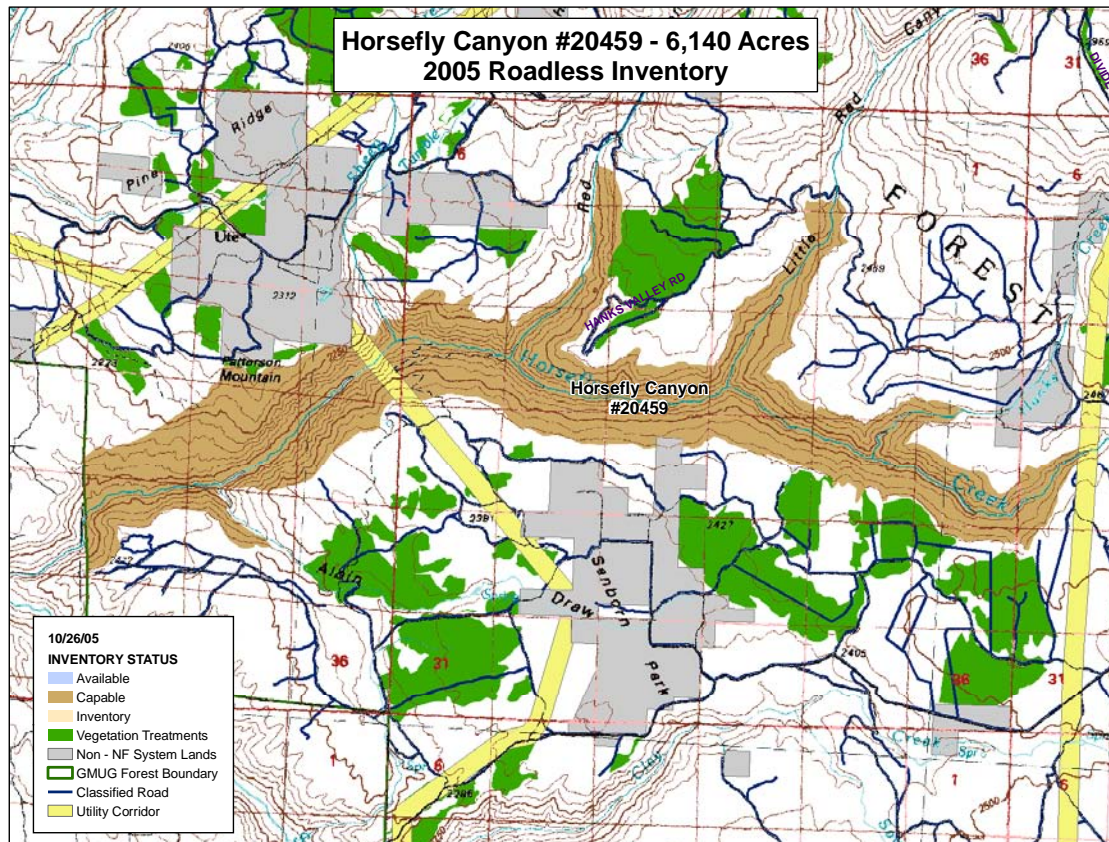
Need:

Nearby Wilderness – approximate distance away:

- Lizard Head Wilderness – 15 miles
- Roubideau Area – 20 miles
- Tabeguache Area – 20 miles
- Mt Sneffels – 20 miles
- Uncompahgre Wilderness – 35 miles
- Gunnison Gorge Wilderness – 45 miles

Horsefly Canyon #20459 – 6,140 Acres – Montrose County

General Description: Unit 20459 is located on the east side of the Uncompahgre Plateau, approximately six miles northeast of Norwood. The canyon sits south of the Hanks Valley Road #512 and north of the Sanborn Park private land settlement.



Elevation Range – 6,200' –7,900'

Ecoregion – M341B – Northern Canyon Lands (Intermountain Semi-Desert and Desert Province)

Vegetation – The Potential Natural Vegetation is predominately 34% pinyon-juniper-oak serviceberry, 27%, spruce-fir-aspen, 16% spruce-fir-fir, 15% oak-serviceberry, 6% Douglas-fir, and 2% ponderosa pine.

Land Type:

90% 30SX – Lower Montane climate zone; mixed sedimentary geology with moderately dissected plateaus, mesas, and canyons.

10% 20SX – Semi Arid climate zone; mixed sedimentary geology with moderate to deeply dissected plateaus, mesas, and canyons.

Resource Activities:Current & Ongoing:

- The Ponderosa, Horsefly Point, Sanborn Park, and Sheep Creek cattle allotments are within this area.
- One non-motorized trail is within the unit, #121 Horsefly Trail.
- The area has existing and pending oil and gas leases. The area is covered by Timing Limitations with Controlled Surface Use stipulation.
- An electrical power line crosses above the canyon.

Wilderness Potential:Capability:

Environment –

- Naturalness – The area offers a high degree of naturalness.
- Solitude – The nature of the canyon isolates it from sights and sounds outside the canyon which provides a sense of remoteness and solitude.

Challenge – Opportunities for adventure and self-reliance are available within this area.

Manageability/Boundaries –

- Size/Shape – The canyon terrain presents a natural shape and boundary for management.
- Boundaries – The natural boundary of the canyon rim provides identifiable and manageable boundaries.

Special Features/Activities – The area contains habitat for Mexican Spotted Owl. The area is adjacent to the San Miguel BLM Area of Critical Concern.

Evaluation: This area meets the criteria for capability and is considered to be **capable** of wilderness.

Availability:

Recreation – Fishing and hunting activities occur within the canyon.

Water – There are no water developments or diversions.

Timber – There are no suitable timber lands within this unit.

Minerals – The area is considered to have moderate mineral potential; there are existing leases within this area.

Management Considerations – The area is currently available for lease and is covered by a Timing Limitations with Controlled Surface Use stipulation.

Evaluation – The area is **not available** for wilderness due to the existing oil and gas leases.

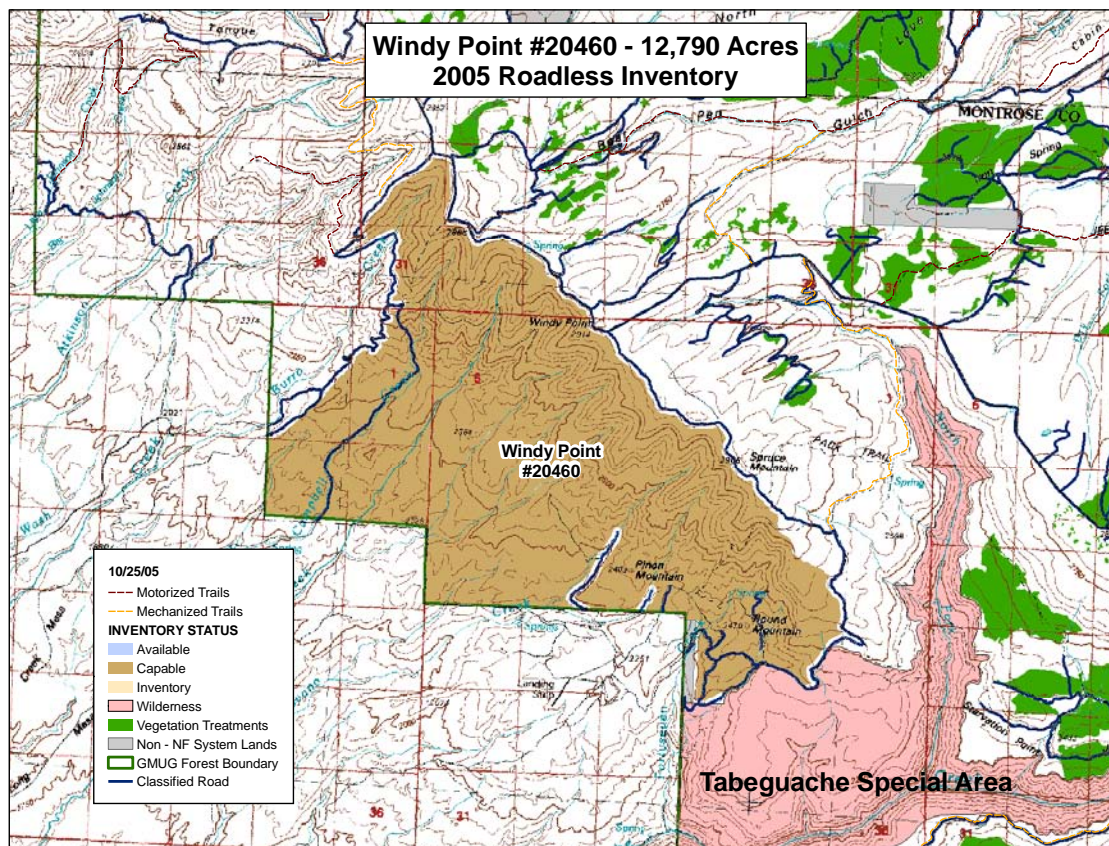
Need:

Nearby Wilderness – approximate distance away:

- Roubideau Area – 10 miles
- Tabeguache Area – 15 miles
- Mt Sneffels – 15 miles
- Lizard Head Wilderness – 25 miles
- Uncompahgre Wilderness – 30 miles
- Gunnison Gorge Wilderness – 30 miles
- West Elk Wilderness – 55 miles

Windy Point #20460 – 12,790 Acres – Montrose County

General Description: Windy Point unit 20460 is located on the west side of the Uncompahgre Plateau, approximately 10 miles north of Nucla and 10 miles east of Uravan. The unit is just north of the Tabeguache Area, separated only by the 47 Road #600. Road #600 also forms a portion of the eastern boundary as does the Divide Road #402. To the north, the unit is bounded by the West Campbell Road #668 which separates Windy Point from roadless unit #20461 Johnson Basin. The Forest boundary to the west is bordered by developed and roaded BLM land and private land development known as The Meadows.



Elevation Range – 6,500' – 9,000'

Vegetation – The Potential Natural Vegetation is predominately 46% oak serviceberry, 23%, pinyon-juniper-oak, 10% ponderosa pine, 10% aspen, and 3% cottonwood-spuce.

Ecoregion – M341B – Northern Canyon Lands (Intermountain Semi-Desert and Desert Province)

Land Type:

30% 20SX – Semi Arid climate zone; mixed sedimentary geology with moderate to deeply dissected plateaus, mesas, and canyons.

20% 30SX – Lower Montane climate zone; mixed sedimentary geology with moderately dissected plateaus, mesas, and canyons.

25% 30IH – Lower Montane climate zone; interbedded.

25% 40SX-1 – Lower Montane and Montane climate zone; mixed sedimentary geology with moderately incised slopes along fault scarp slopes.

Resource Activities:

Current & Ongoing:

- The Musser and Kelso Creek cattle allotments are within this area.
- As a result of the 2000 Uncompahgre Travel Plan decision, a series of roads have been closed restoring portions of this landscape to an unroaded status.
- The area has current applications for oil and gas leases. The area is covered by Timing Limitations with Controlled Surface Use, No Surface Occupancy, and Controlled Surface Use stipulations.
- Spruce Mountain timber sale sits just outside of the unit.
- Mechanical vegetation treatments (roller chopping) for wildlife habitat improvement are planned in this area.
- Irrigation ditches for the Meadows Ranch are within the unit.

Wilderness Potential:

Capability:

Environment –

- Naturalness – The area has evidence of previous roading. The roads are currently decommissioned and are revegetating. Away from evidence of roads, the landscape retains a high degree of naturalness.
- Solitude – The Divide Road is a major road corridor and influences solitude and sense of remoteness. Away from the Divide Road, the area provides opportunities for remoteness and solitude. The BLM lands below the Forest are heavily roaded due to uranium exploration. The presence of this dense road system lessens the feeling of remoteness.

Challenge – This area offers a moderate degree of challenge. The proximity to roads and trails detract from a sense of adventure and self-reliance.

Manageability/Boundaries –

- Size/Shape – The area is of a size and shape that is manageable for roadless or wilderness.
- Boundaries – The boundaries follow roads and the forest boundary.

Special Features/Activities – The area provides summer and winter range for big game.

Evaluation: This area meets the criteria for capability and is considered to be **capable** of wilderness.

Availability:

Recreation – One mechanized trail is located within the area.

Water – There are active irrigation ditches that service the Meadows Ranch.

Timber – There are approximately 2,400 acres of lands tentatively suitable for producing timber for wood fiber production within this unit.

Minerals – The area is considered to have a moderate mineral potential; there are leases pending within this area. The area is covered by Timing Limitations with Controlled Surface Use, No Surface Occupancy, and Controlled Surface Use stipulations.

Management Considerations – The area is currently available for lease.

Evaluation – The area is **not available** for wilderness due to existing water diversions and pending oil and gas leases.

Need:

Nearby Wilderness – approximate distance away:

- Tabeguache Area – 1 mile
- Roubideau Area – 15 miles
- Mt Sneffels – 40 miles
- Lizard Head Wilderness – 40 miles
- Gunnison Gorge Wilderness – 40 miles
- Uncompahgre Wilderness – 50 miles
- West Elk Wilderness – 60 miles

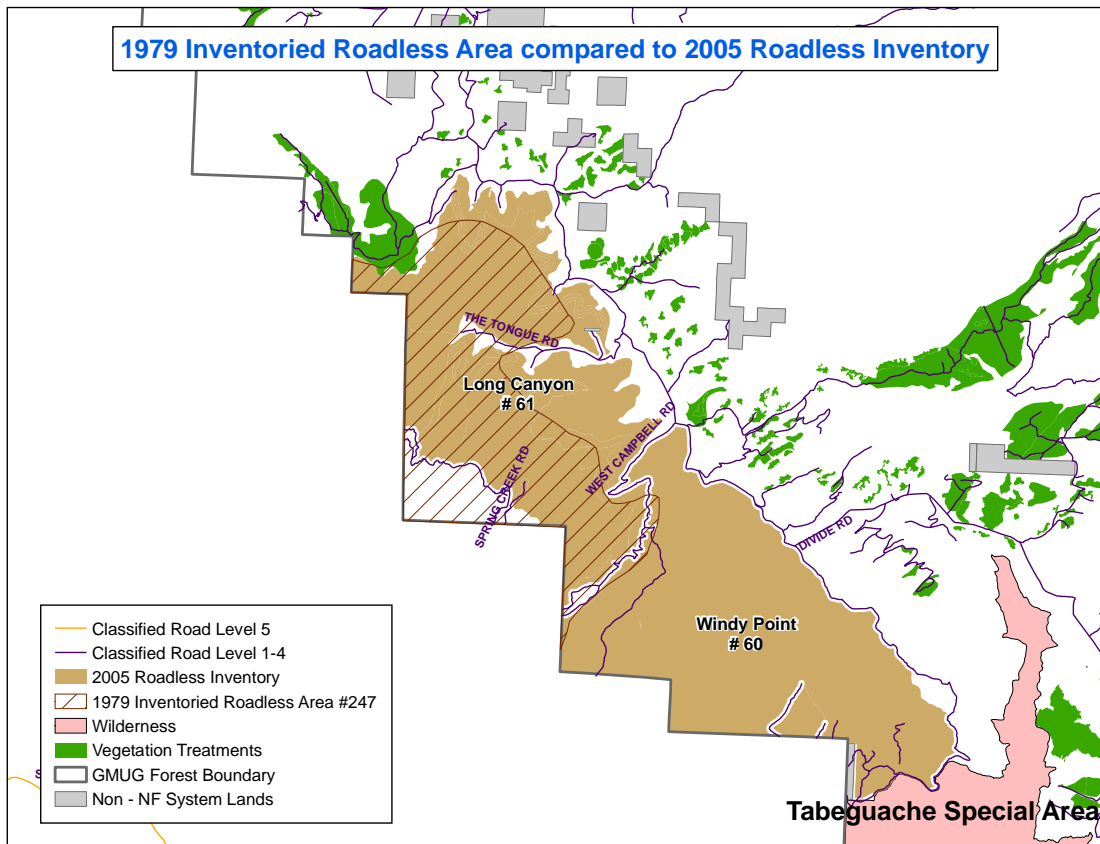
Rare II # 247 Johnson Creek

RARE II History – RARE unit 247 identified 10,330 acres as roadless yet the area was not recommended for wilderness in the RARE II FEIS. Lands altered by roading and ponderosa pine treatments were removed from the inventory. The remaining lands are described in the **2005 Inventory as #20461 Johnson Basin**.

Resource Activities which removed lands of RARE 247 from 2005 inventory:

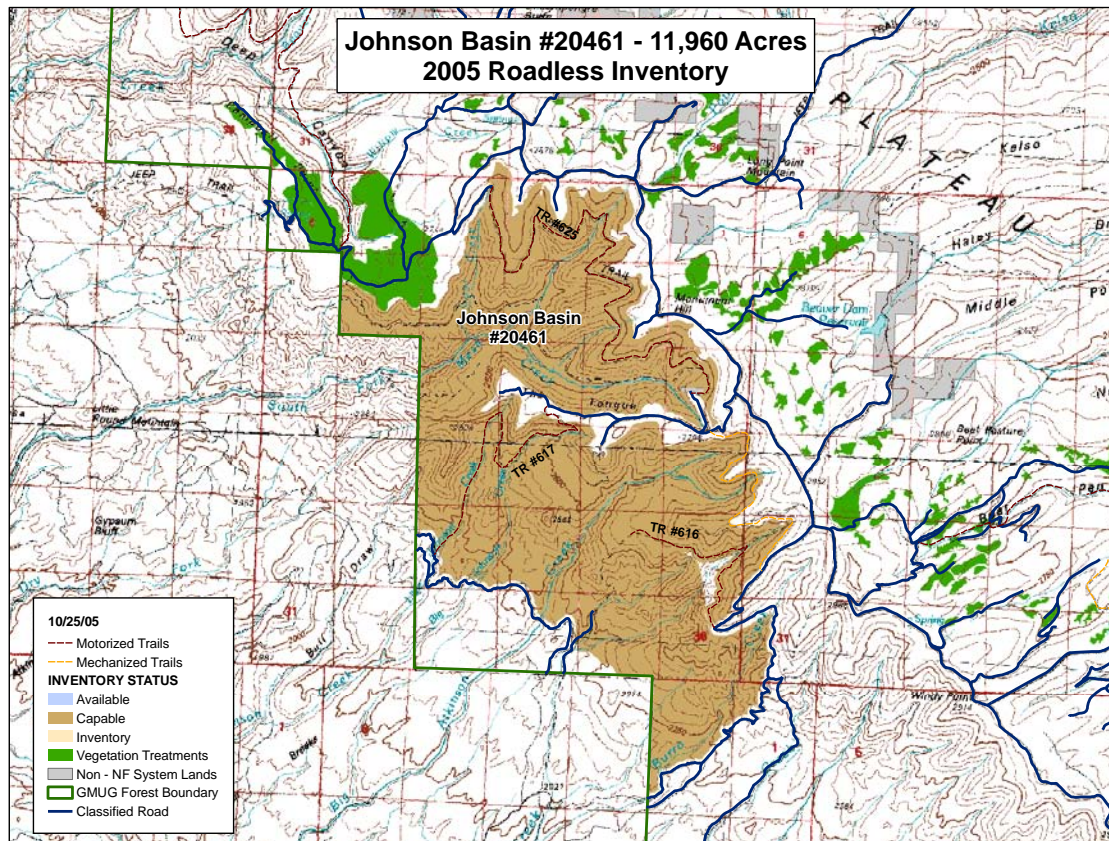
Past-Present

- Thirteen miles of road
- Ponderosa pine plantations



2005 Inventory Descriptions:***Johnson Basin #20461 – 11,960 Acres – Montrose & Mesa Counties***

General Description: Unit 20461 is located on the west side of the Uncompahgre Plateau, approximately 10 miles north of Nucla. Just north of the Windy Point Unit, the area parallels the west side of the Divide Road #402. To the north, roads #411, Campbell Lake Road and #411.2A Willow Creek Road split this unit from unit #20462. The Forest boundary to the west is bordered by developed and roaded BLM land.



Elevation Range – 7,000' –9,200'

Vegetation – The Potential Natural Vegetation is predominately 35% oak-serviceberry, 33%, pinyon-juniper-oak, 10% ponderosa pine, 8% aspen, 7% Douglas-fir, and 4% spruce-fir-aspen.

Ecoregion – M341B – Northern Canyon Lands (Intermountain Semi-Desert and Desert Province)

Land Type:

30% 30 IX – Lower Montane climate zone; mixed intrusive igneous rocks on escarpments and canyon sideslopes.

20% 30SX – Lower Montane climate zone; mixed sedimentary geology with moderately dissected plateaus, mesas, and canyons.

20% 20SX – Semi Arid climate zone; mixed sedimentary geology with moderate to deeply dissected plateaus, mesas, and canyons.

Resource Activities:

Current & Ongoing:

- The Club cattle allotment is within this area.
- Existing livestock fences, stockponds, and stock drive paths are maintained using motorized equipment.
- Portions of the area are available for oil and gas leasing. Lease applications have been received for both areas currently available and those that have not been analyzed for leasing.
- Management activities for wildlife habitat and vegetative improvement.
- Several recreation trails, both motorized and non-motorized, are within the unit.

Motorized Trails

Spring Creek #616
Little Johnson #617
Upper Bench #625

Non-motorized Trails

Lower Bench #650
Atkinson #624
Coal Creek #605
Big Johnson #622
Hells Half Acre #609

Mechanized Trail

Atkinson Bench #626

Wilderness Potential:

Capability:

Environment –

- Naturalness – The area contains old road prisms that are healing. Some indication of prescribed burning is evident. Overall, however, the area has a high degree of naturalness.
- Solitude – The area is hot and dry; as a result, summer use is light and the chance for solitude is great. The area is sufficiently far from the Divide Road to be shielded from sights and sounds. The number of trails in the area influence solitude and sense of remoteness. Motorized trail #617 bisects the area; however, the relatively low use level of this route maintains a sense of remoteness in the area.

Challenge – Opportunities for adventure and self-reliance are available within this area.

Manageability/Boundaries –

- Size/Shape – The area is of a size and shape that is manageable for roadless or wilderness.
- Boundaries – The boundaries follow roads and topographic features.

Special Features/Activities – The proposed Research Natural Area, Big Atkinson Breaks, is located within this unit.

Evaluation: This area meets the criteria for capability and is considered to be **capable** of wilderness.

Availability:

Recreation – Motorized and mechanized trails are within the unit.

Water – There are no water developments or diversions.

Timber – There are approximately 500 acres within the unit that are tentatively suitable for producing timber for wood fiber production.

Minerals – Portions of this unit are available for leasing. The remainder of the unit has not been analyzed for leasing. Applications have been received for both available and not yet analyzed lands.

Management Considerations – Most of this area has not been evaluated for lease stipulations.

Evaluation – The area is **not available** for wilderness due pending oil and gas leases.

Need:

Nearby Wilderness – approximate distance away:

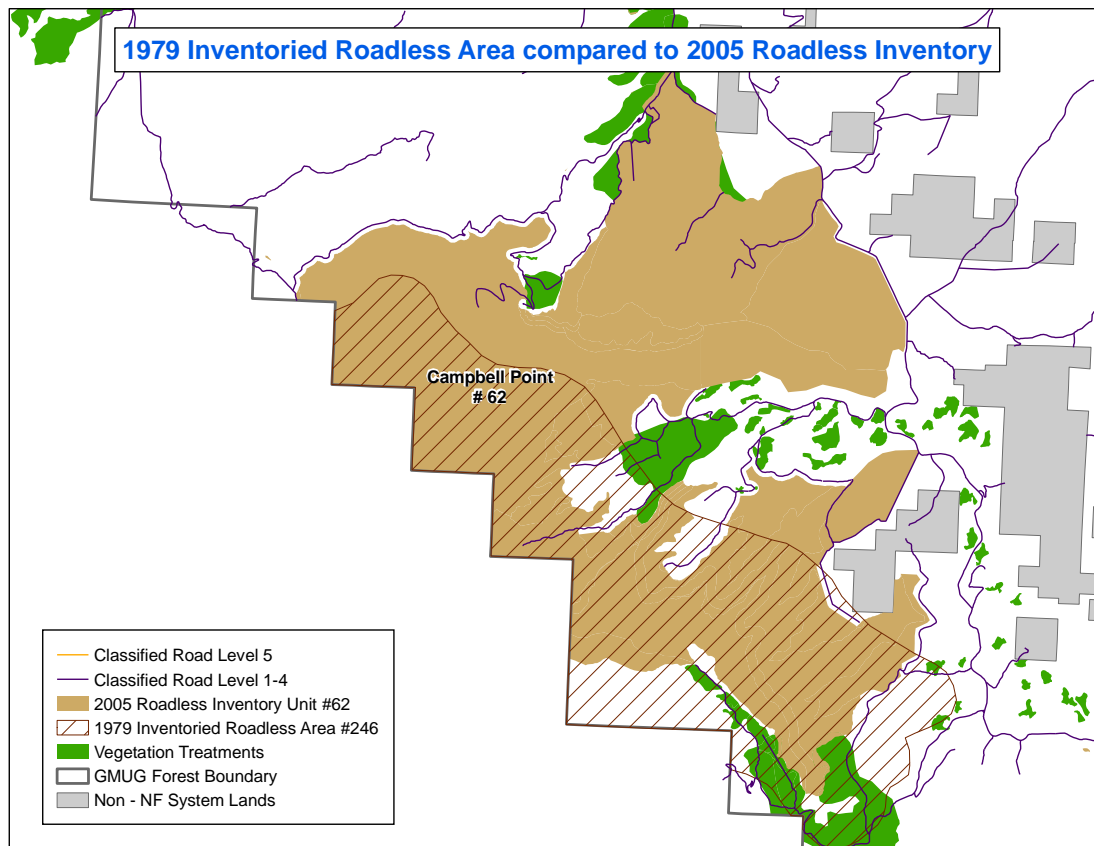
- Tabeguache Area – 10 miles
- Roubideau Area – 20 miles
- Gunnison Gorge Wilderness – 40 miles
- Mt Sneffels – 50 miles
- Lizard Head Wilderness – 50 miles
- Black Ridge Canyon Wilderness – 50 miles
- Uncompahgre Wilderness – 60 miles
- West Elk Wilderness – 65 miles

Rare II # 246 Campbell Point

RARE II History – RARE II Unit 246 identified 11,300 acres as roadless yet the area was not recommended for wilderness in the RARE II FEIS. Lands altered by roads, timber, and timber harvest have been removed from the inventory. The remaining area is described in the **2005 Inventory as #20462 Long Canyon**.

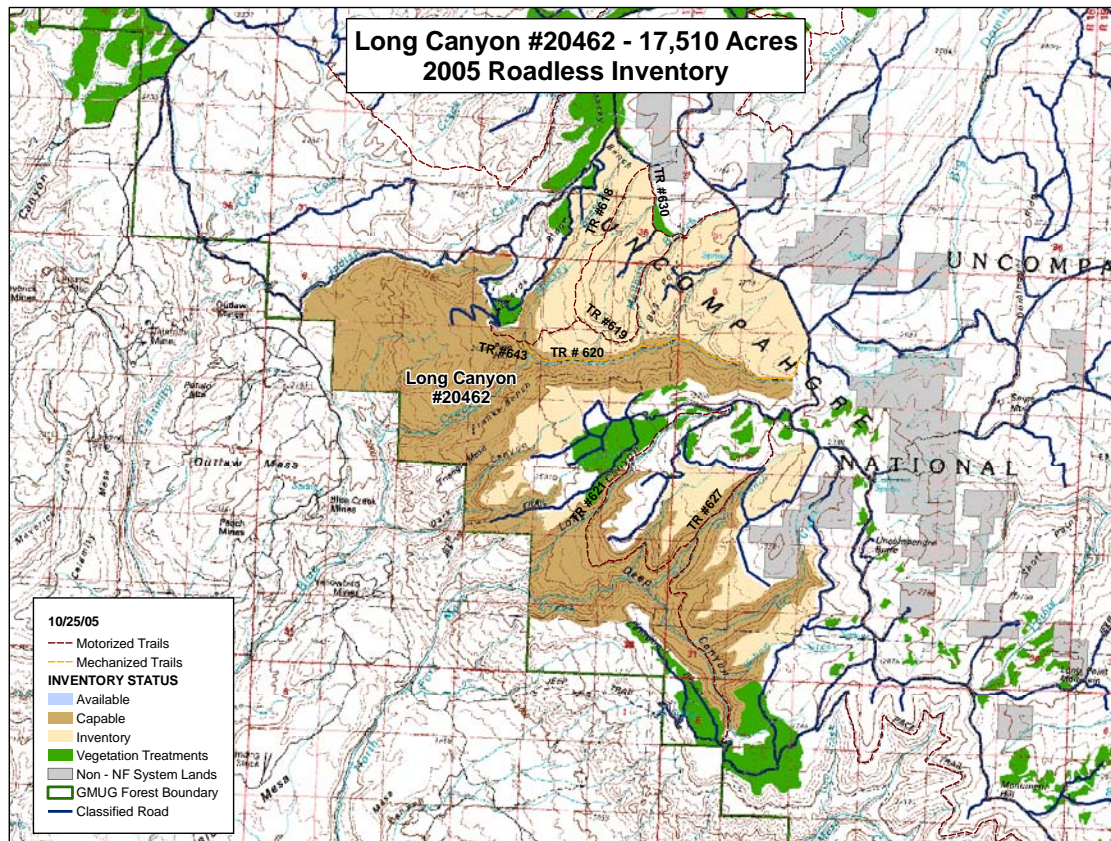
Resource Activities which removed lands of RARE 246 from 2005 inventory:

- Timber harvest (360 ac) in the Long Canyon area
- Thirteen miles of road



2005 Inventory Descriptions:***Long Canyon #20462 – 17,510 Acres – Mesa County***

General Description: Unit 20462 is located on the west side of the Uncompahgre Plateau, approximately 13 miles northeast of Uravan. The unit lays along the western perimeter of the Uncompahgre Plateau, bordered to the west by developed and roaded BLM lands. This unit sits just north of the Johnson Basin Unit and just south of unit #20463, Calamity Basin. The northern boundary follows the Uranium Road #404.



Elevation Range – 6,400' –9,100'

Vegetation – The Potential Natural Vegetation is predominately 41% ponderosa pine, 27% pinyon-juniper, 13% spruce-fir-aspen, 12% oak-serviceberry, and 7% aspen.

Landforms – M341B – Northern Canyon Lands (Intermountain Semi-Desert and Desert Province)

Land Type:

50% 30SX – Lower Montane climate zone; mixed sedimentary geology with moderately dissected plateaus, mesas, and canyons.

25% 30IX – Lower Montane climate zone; mixed intrusive igneous geology with escarpments and canyon sideslopes.

10% 20SX – Semi Arid climate zone; mixed sedimentary geology with moderate to deeply dissected plateaus, mesas, and canyons.

Resource Activities:

Current & Ongoing:

- The Club-Campbell Point, Blue Creek, and UC cattle allotments are within this area.
- Livestock fences, stockponds, and stock driveways are maintained with motorized equipment.
- The area has oil and gas leases pending. Portions of the area are available for oil and gas leasing. Lease applications have been received for both areas currently available and those that have not been analyzed for leasing.
- Prescribed burning activities for wildlife habitat improvement.
- Several recreation trails, both motorized and non-motorized, are within the unit.

Motorized Trails

Long Canyon* #621

Beaver Dam* #627

Massey Branch #618

Leonard's Ridge #643

Mailbox Cutoff #630

Non-motorized Trails

Bunch Ground #634

Franks Bench #632

UC #642

Mechanized Trail

Blue Creek #620

*seasonal use restrictions apply to these trails

Wilderness Potential:

Capability:

Environment –

- Naturalness – The area has evidence of previous roading. The roads are currently decommissioned and are revegetating. Remnants of timber harvest from the 1950s are evident between trails #619 and #618. Away from evidence of roads and harvest units, the landscape retains a high degree of naturalness.
- Solitude – The area is bordered by a series of roads. Motorized trails run through the area. Sights and sounds are evident from within the unit. The BLM lands below the Forest are heavily roaded due to uranium exploration. The presence of this dense road system lessens the feeling of remoteness within the area.

Challenge – Opportunities for adventure and self-reliance are limited within this area.

Manageability/Boundaries –

- Size/Shape – The eastern boundary follows a series of roads and harvest units, resulting in an unusual shape that would be difficult to manage and describe.

- Boundaries – By adjusting the boundaries to follow the steep slopes of the landscape rather than the indiscernible boundary that crosses the flat landscape, it would be possible to protect the existing unroaded character.

Special Features/Activities – The area provides winter range for big game.

Evaluation: A portion of this unit meets criteria for capability and is considered to be **capable** of wilderness. The remainder of the area does not meet boundary management criteria.

Availability (of Capable Lands):

Recreation – Motorized and mechanized trails are within the area. The Long Canyon (eight miles) and the Mailbox motorized trails are a significant component of a larger recreation system and travel north-south through the area.

Water – There are no water developments or diversions.

Timber – There are approximately 1,000 acres within the capable portion that are tentatively suitable for producing timber for wood fiber production. Another 3,500 acres of suitable timber land are within the inventory portion.

Minerals – Portions of this unit are available for leasing. The remainder of the unit has not been analyzed for leasing. Applications have been received for both available and not yet analyzed lands

Management Considerations – This area has not been evaluated for lease stipulations.

Evaluation – The area is **not available** for wilderness due to motorized recreation opportunities that it offers.

Need:

Nearby Wilderness – approximate distance away:

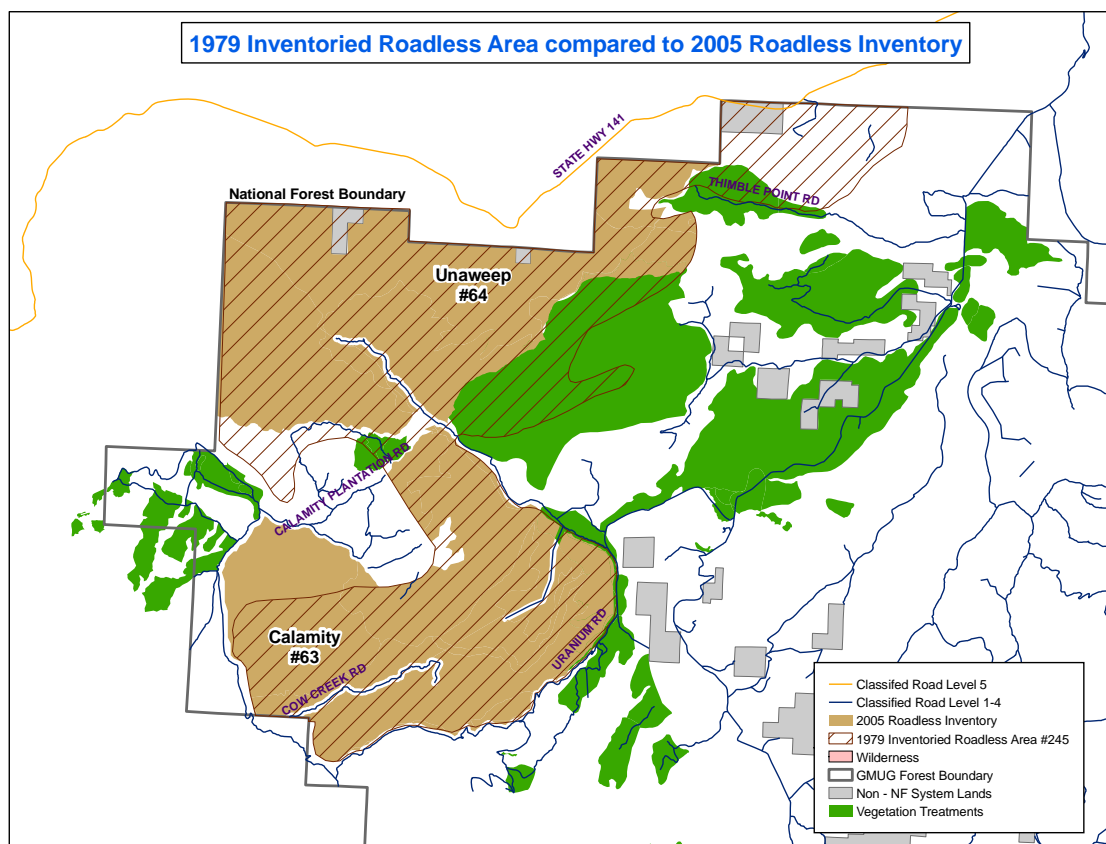
- Tabeguache Area – 15 miles
- Roubideau Area – 25 miles
- Gunnison Gorge Wilderness – 45 miles
- Black Ridge Canyon Wilderness – 40 miles
- Mt Sneffels – 55 miles
- Uncompahgre Wilderness – 65 miles
- West Elk Wilderness – 70 miles

Rare II # 245 Ute Creek

RARE II History – RARE Unit 245 identified 28,160 acres as roadless yet the area was not recommended for wilderness in the RARE II FEIS. In 2001, Colorado Congresswoman Diana DeGette introduced a Colorado Wilderness bill which included portions of this area. In 2003, Congresswoman DeGette again introduced a Colorado Wilderness bill. The 2003 proposal expanded the UnawEEP acres being considered for wilderness from the 2001 proposal. To date, no action has been taken by Congress on the proposal. Lands altered by roads and mechanical vegetation treatments along with non-National Forest System lands were removed from the roadless inventory. The remaining lands are described in the **2005 inventory as units #20463 Calamity Basin and #20464 UnawEEP.**

Resource activities which removed lands of RARE 245 from 2005 Inventory:

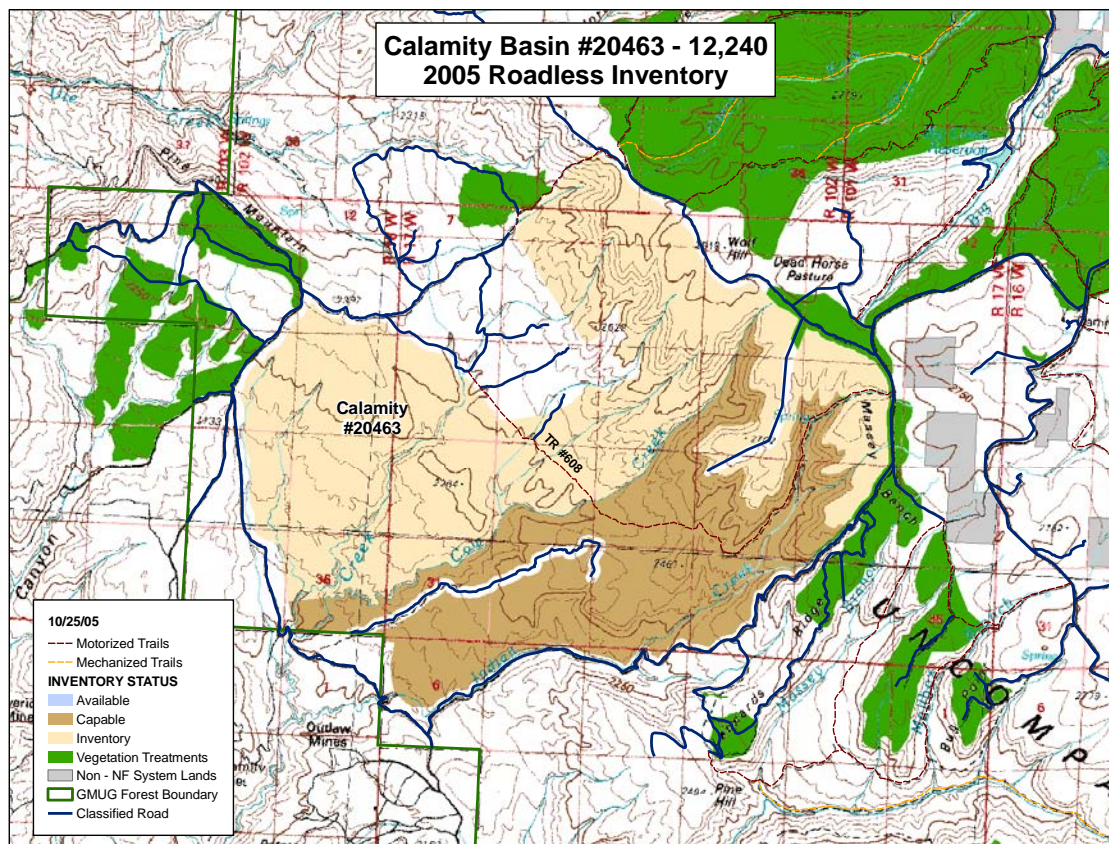
- Fourteen miles of road
- Non-National Forest System lands
- Timber harvest (162 acres)



2005 Inventory Descriptions:

Calamity Basin #20463 – 12,240 Acres – Mesa County

General Description: Unit 20461 is located on the east side of the Uncompahgre Plateau, approximately nine miles east of Gateway. The unit lays along the western perimeter of the Uncompahgre Plateau, bordered to the west by developed and roaded BLM lands. This unit sits just north of the unit #20462 and just south of unit #20464.



Elevation Range – 6,500' – 9,100'

Vegetation – The Potential Natural Vegetation is predominately 34% oak-serviceberry, 25% ponderosa pine, 17% pinyon-juniper-oak, 9% Douglas-fir, 5% aspen and 2% spruce-fir.

Landforms – M341B – Northern Canyon Lands (Intermountain Semi-Desert and Desert Province)

Land Type:

65% 30IX – Lower Montane climate zone; mixed intrusive igneous geology with escarpments and canyon sideslopes.

35% 30SX – Lower Montane climate zone; mixed sedimentary geology with moderately dissected plateaus, mesas, and canyons.

Resource Activities:Current & Ongoing:

- The Blue Creek cattle allotment is within this area. Minor portions of the Mudholes and Lakes allotment are also within this area.
- Existing livestock fences and stockpounds with the unit are maintained with motorized equipment.
- Portions of the area are available for oil and gas leasing. Lease applications have been received for both areas currently available and those that have not been analyzed for leasing.
- Calamity Basin has been extensively managed for the last 20 years to reduce fuel loading and improve range condition in habitat for big game.
- Pine plantations planted in the late 1960s are just outside of the inventory area.
- Both motorized and non motorized trails are within the unit.

Motorized Trails

Ute Creek #608

Non-Motorized Trails

Cow Creek #611

Ute Creek Cut-off #659

Wilderness Potential:Capability:

Environment –

- Naturalness – Two roads intrude into the area, #4058.4A Cow Creek and #416.1A Rim South Spur, creating a cherry stem effect. Remnants of timber harvest from the 1950s are evident along the northern perimeter of the unit.
- Solitude – The area between the cherry stem roads is not large enough to shield one from the sights and sounds of activity along the roads. The one motorized trail, Ute Creek #608, bisects the unit. The sense of remoteness and opportunities for solitude are not very high within this unit.

Challenge – The area provides a low to moderate degree of challenge. The relatively open vegetation and close proximity to sights and sounds of roads and trails lessens opportunity for adventure and self-reliance.

Manageability/Boundaries –

- Size/Shape – The shape of this unit would be difficult to manage, particularly along the northern boundary. The terrain is flat with sparse vegetation and there are no natural features to help distinguish a boundary.
- Boundaries – Boundary adjustments would need to be made for manageability.

Special Features/Activities – The area provides winter range for big game.

Evaluation: Only portions of this area meet the criteria for capability and are considered to be **capable** of wilderness. The remaining portions do not meet manageability, naturalness and challenge criteria.

Availability (of Capable Lands):

Recreation – The Ute Creek Trail is a motorized trail that is linked to a larger motorized trail system on the Plateau.

Water – There are no water diversions or impoundments.

Timber – There are no lands suitable for wood fiber production within the capable portion of this unit; however, approximately 1,300 acres of tentatively suited timber lands are within the inventory portion of this unit.

Minerals – The area is considered to have a moderate mineral potential; there are leases pending within this area. The area is covered by Timing Limitation with Controlled Surface Use and Seasonal Timing Limitation stipulations.

Management Considerations – Most of this area has not been evaluated for lease stipulations.

Evaluation – The area is **not available** for wilderness due to pending oil and gas leases.

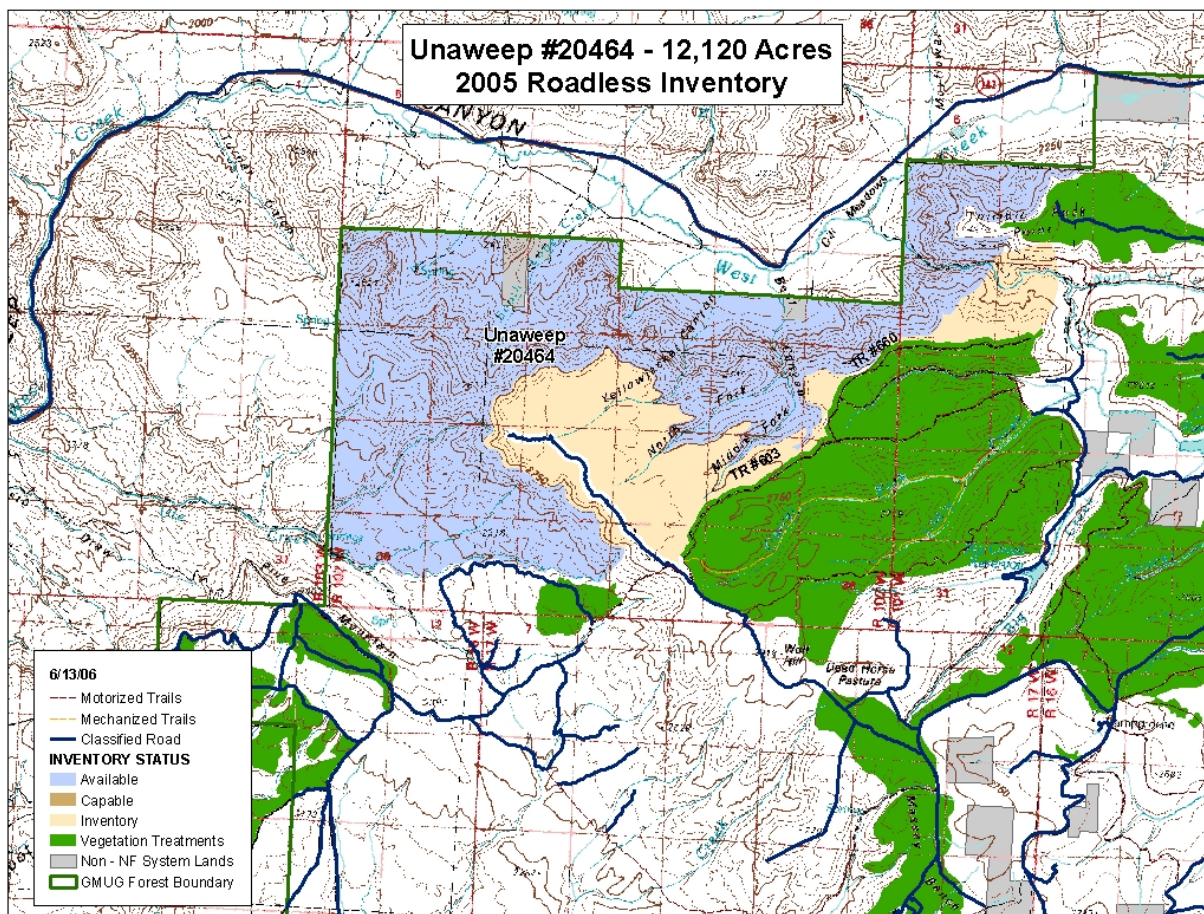
Need:

Nearby Wilderness – approximate distance away:

- Tabeguache Area – 25 miles
- Roubideau Area – 30 miles
- Gunnison Gorge Wilderness – 50 miles
- Black Ridge Canyon Wilderness – 40 miles
- Uncompahgre Wilderness – 70 miles
- West Elk Wilderness – 70 miles

Unaweep #20464 – 12,120 Acres – Mesa County

General Description: Unit 20464 is located on the extreme northwest edge of Uncompahgre Plateau, approximately eight miles northeast of Gateway and 30 miles southwest of Grand Junction. The area is located south of the Unaweep Canyon and borders Hwy 141. The adjacent BLM land is unroaded and the combined BLM-National Forest area was submitted as part of the DeGette Wilderness proposal in 2003.



Elevation Range – 6,500' – 9,400'

Vegetation – The Potential Natural Vegetation is predominately 17% pinyon-juniper, 25% ponderosa pine-oak, 9% Douglas-fir, 13% spruce-fir-aspen, 5% aspen, 34% oak-serviceberry, and 3% sagebrush.

Ecoregion – M341B – Northern Canyon Lands (Intermountain Semi-Desert and Desert Province)

Land Type:

65% 30IX – Lower Montane climate zone; mixed intrusive igneous geology with escarpments and canyon sideslopes.

35% 30SX – Lower Montane climate zone; mixed sedimentary geology with moderately dissected plateaus, mesas, and canyons.

Resource Activities:

Current & Ongoing:

- The Mudholes/Lakes and Blue Creek cattle allotments are within this area.
- Existing livestock fences, stockponds, and stock driveways are maintained with motorized equipment.
- The area has pending oil and gas leases. The area is considered low potential for oil and gas. Currently no surface occupancy stipulations have been assigned to the area.
- Two motorized trails, which are open to full size vehicles, make up the eastern boundary of the unit, #660 Little Bear Lake Trail and #603 Basin Trail.
- Two non-motorized trails are within the unit, #601 Unaweep Trail and #602 Gill Creek.
- Several irrigation ditches are within the unit:
 - Idlewild Ditch – Sec 14, T.15 S. R102 W.
 - W.S. LaFair Ditch Sec15, T15 S. R.102 W.
 - Unaweep Cattle Range Ditch #2 Sec 7, T15 S. R.101 W.

Wilderness Potential:

Capability:

Environment –

- Naturalness – The area has evidence of previous roading. Remnants of timber harvest from the 1950s are evident along the Basin and Little Bear Lake Trails. Road #416 is cherry stemmed into the area. Away from roads and trails, the area retains a high degree of naturalness.
- Solitude – Motorized trails and roads comprise much of the boundary of this unit. Away from roads and trails, the steep, rugged terrain contributes to the sense of remoteness and opportunities for solitude.

Challenge – The landscape offers rugged terrain as it drops off the edge of the Plateau, providing opportunities for adventure and self-reliance.

Manageability/Boundaries –

- Size/Shape – The area is of a size and shape that is manageable for roadless or wilderness.
- Boundaries – The boundaries follow established trails and the topographic features of Ute Creek to the south. The boundary around Rim Road should be adjusted away from the road to a topographic feature for better defensibility.

Special Features/Activities – The area is considered to be key winter range for mule deer. The area offers spectacular scenery. The mix of vegetation, spectacular views, and the physical challenge that the Unaweep unit offers are unique within the Uncompahgre Plateau.

Evaluation: With an alteration of the boundary for manageability, this area meets the criteria for capability and is considered to be **capable** of wilderness.

Availability (of Capable Lands):

Recreation – There are non-motorized recreation trails within the unit. Motorized trails #660 and #603 run along the boundary of the unit. Winter motorized use occurs only in the inventory portion of the unit.

Water – There are three irrigation ditches in the area transporting water to private lands.

Timber – There are no lands suitable for wood fiber production within the capable portion of this unit; however, approximately 150 acres of tentatively suited timber lands are within the inventory portion of this unit.

Minerals – The area has no known potential for oil and gas resources. The area has not been analyzed for oil and gas.

Management Considerations – This area has not been evaluated for lease stipulations.

Evaluation – The capable lands are **available** for wilderness.

Need: Individual unit assessments of available lands begin on page 262.

Nearby Wilderness – approximate distance away:

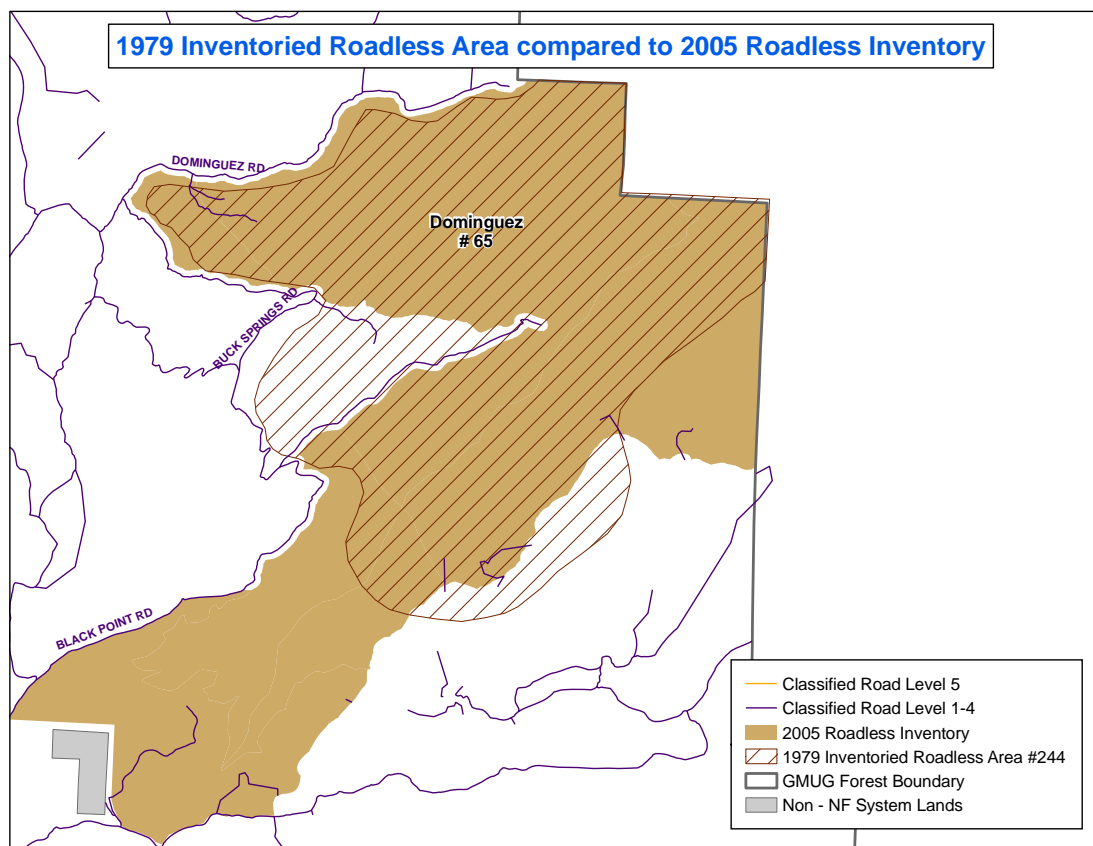
- Tabeguache Area – 30 miles
- Black Ridge Canyon Wilderness – 30 miles
- Roubideau Area – 35 miles
- Gunnison Gorge Wilderness – 50 miles
- West Elk Wilderness – 65 miles

Rare II # 244 Black Point

RARE II History – The Black Point RARE II unit identified 10,750 acres as roadless yet the area was not recommended for wilderness in the RARE II FEIS. In 2001, Colorado Congresswoman Diana DeGette introduced a Colorado Wilderness bill which included portions of this area. In 2003, Congresswoman DeGette again introduced a Colorado Wilderness bill. The 2003 proposal expanded the area being considered for wilderness from the 2001 proposal. To date, no action has been taken by Congress on the proposal. Lands that have been altered by road construction, terracing and pine plantation sites were removed from the inventory. The remaining lands are described in the **2005 inventory as #20465 Dominguez**.

Resource Activities which removed lands of RARE 244 from 2005 inventory:

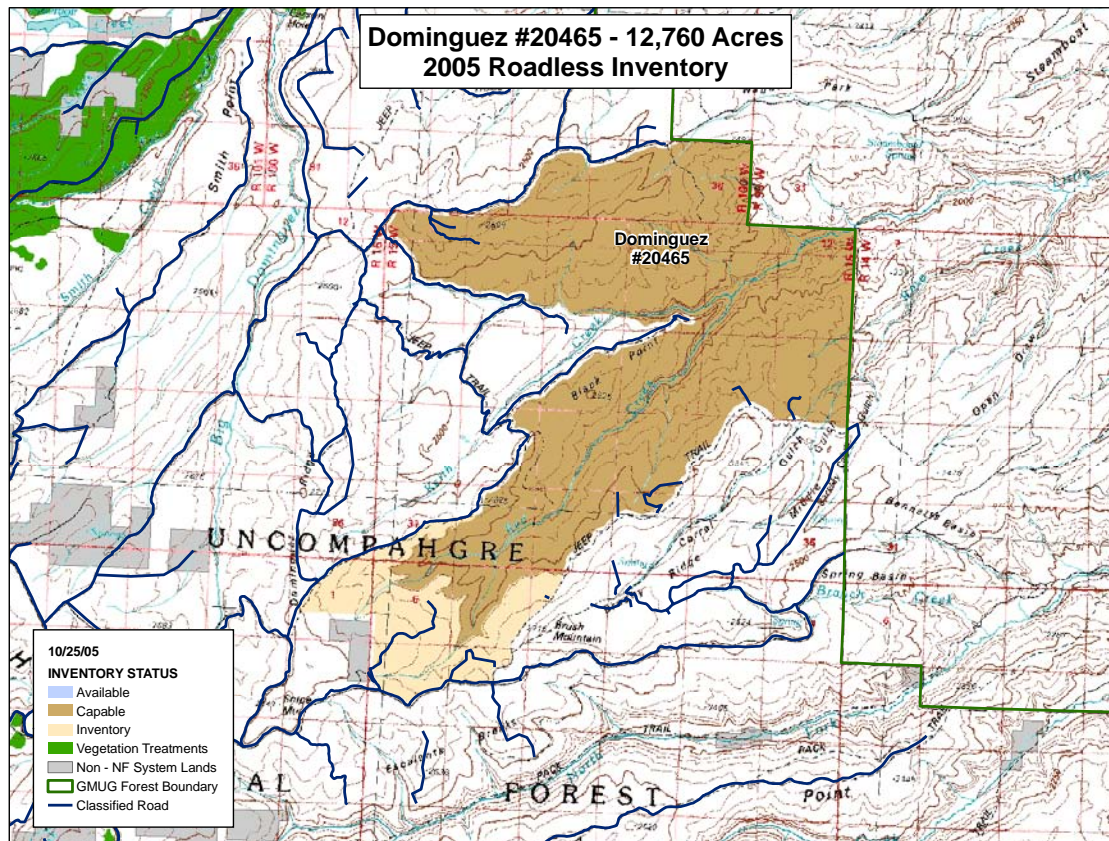
- Six miles of road
- Vegetation alterations of 207 acres
- Terracing and pine plantations exist along the Black Point Road; the Ponderosa pine plantings are considered off-site



2005 Inventory Descriptions:

Dominguez #20465 – 12,760 Acres – Mesa County

General Description: Unit 20465 is located on the east side of the Uncompahgre Plateau, approximately 24 miles southwest of Delta; the area is adjacent to the BLM Dominguez Wilderness Study Area. The vegetation is generally an oak brush type which transitions into sage and pinyon-juniper. Pockets of ponderosa pine exist in the Winter Camp area.



Elevation Range – 6,600' – 9,000'

Vegetation – The Potential Natural Vegetation is predominately 46% pinyon-juniper, 39% oak-serviceberry, 15% ponderosa pine-oak, 14% spruce-fir-aspen, 9% aspen, and 6% sagebrush.

Landforms – M341B – Northern Canyon Lands (Intermountain Semi-Desert and Desert Province)

Land Type:

45% 30SX – Lower Montane climate zone; mixed sedimentary geology with moderately dissected plateaus, mesas, and canyons.

55% 20SX – Semi Arid climate zone; mixed sedimentary geology with moderate to deeply dissected plateaus, mesas, and canyons.

Resource Activities:Current & Ongoing:

- The Smith, Dominguez, and Musser cattle allotments are within this area.
- Livestock fences, both interior and along the boundary, are maintained using motorized equipment. Stockponds will be maintained with heavy equipment.
- Prescribed fire activities and mechanical activities for wildlife habitat improvement have occurred within the last three years.
- Unplanned roads established by recreation users have been systematically closed or converted to trails (#645 and #635) as a result of the Uncompahgre Travel Plan decision of 2000.
- Non-motorized recreation trails #645 Winter Camp Trail, #635 Bad Land Trail, and #613 Black Point Trail.

Special Features/Activities – Adjacent to the Dominguez WSA.

Wilderness Potential:Capability:

Environment –

- Naturalness – The area contains evidence of old road prisms affecting the naturalness of the area.
- Solitude – The area is hot and dry resulting in light summer use. Opportunities for solitude are very limited in this unit; only after dropping off of Black Point into the canyon is there a feeling of solitude. The generally open and relatively flat terrain allows for views of distant roads and people. Fall big game hunting season is particularly congested. During the mid summer heat, interest in the area is low.

Challenge – The area provides a low degree of challenge. The open and flat terrain coupled with the proximity to sights and sounds of roads and trails, limits opportunities for adventure and self reliance.

Manageability/Boundaries –

- Size/Shape – The area is of a size and shape that is manageable for roadless or wilderness.
- Boundaries – The boundaries follow roads and topographic features.

Special Features/Activities – The area is important summer big game habitat for elk and mule deer. The area contains the forb *Draba rectifruca* (Mountain draba), an emphasis species. This specie occurs in New Mexico and Utah, its eastern range extending into Colorado.

Evaluation: A portion of the unit is **capable** of wilderness consideration. Areas not capable were withdrawn for boundary adjustment and management reasons.

Availability (of Capable Lands):

Recreation – There are three non-motorized recreation trails in the unit.

Water – There are no water developments.

Timber – There are no lands suitable for wood fiber production within this unit.

Minerals – The area has no known potential for oil and gas resources. The area has not been analyzed for leasing.

Wildlife – This unit is important wildlife big game summer range and requires active vegetation management.

Management Considerations –Active wildlife habitat management.

Evaluation – The area provides important summer big game habitat that requires active habitat management. This unit is **not available** for wilderness.

Need:

Nearby Wilderness – approximate distance away:

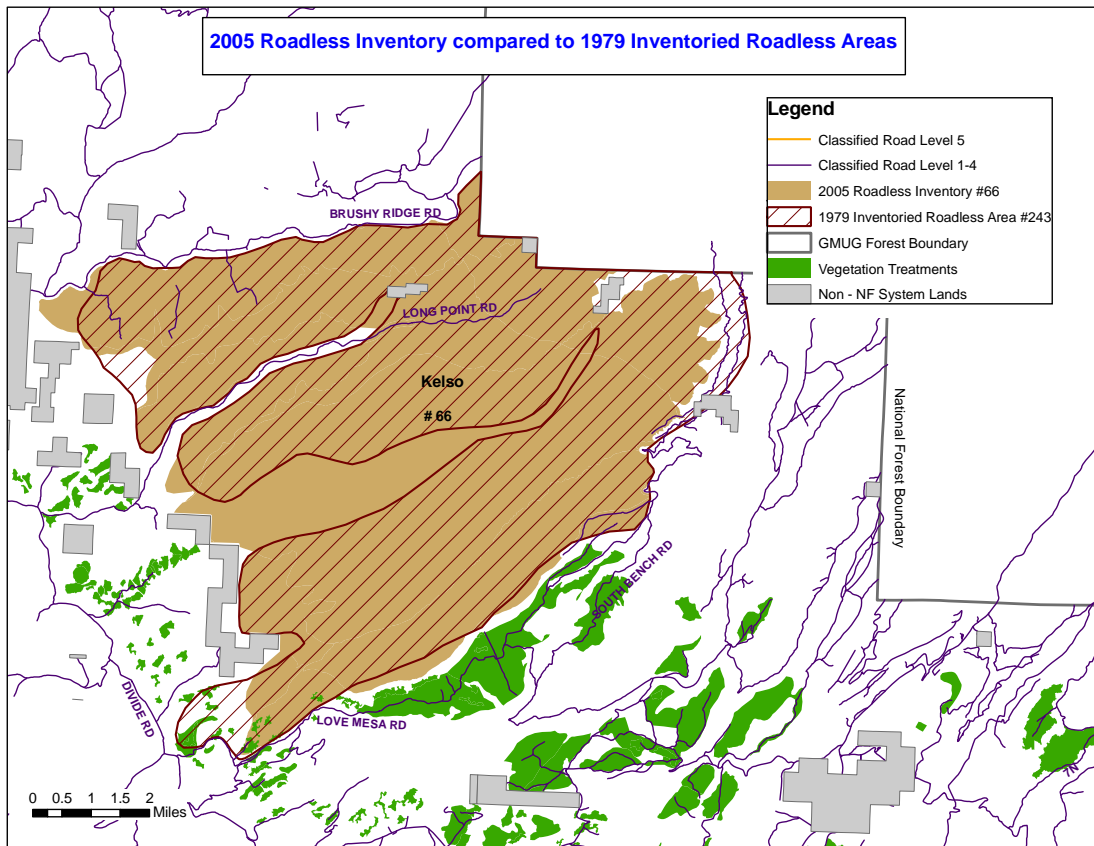
- Tabeguache Area – 20 miles
- Roubideau Area – 20 miles
- Gunnison Gorge Wilderness – 35 miles
- Black Ridge Canyon Wilderness – 40 miles
- Mt Sneffels – 55 miles
- West Elk Wilderness – 55 miles
- Lizard Head Wilderness – 60 miles
- Uncompahgre Wilderness – 60 miles

Rare II # 243 Kelso Mesa

RARE II History – RARE II Unit 243 identified 34,340 acres as roadless yet did not recommend the area for wilderness in the RARE II FEIS. Areas altered by roads and timber harvest and non-National Forest System lands were removed from the inventory. The remaining lands are described in the **2005 Inventory as #20466 Kelso Mesa**.

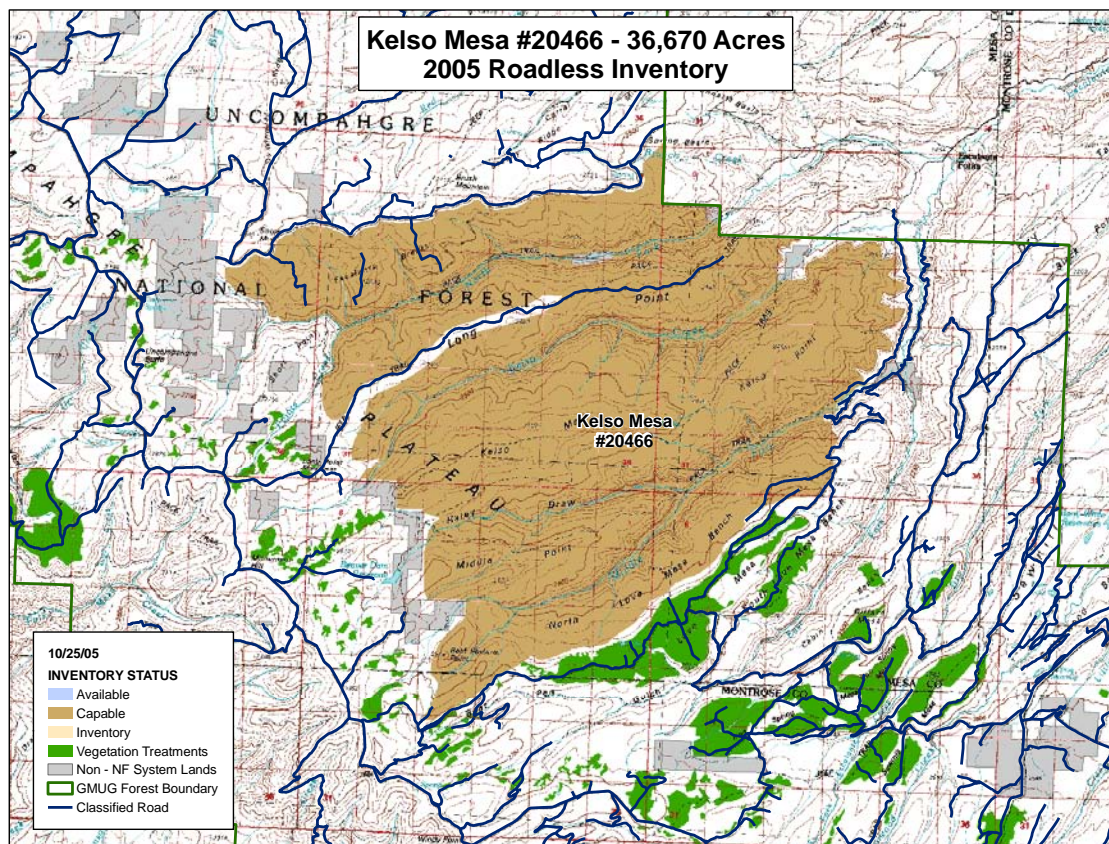
Resource Activities which removed lands of RARE 243 from 2005 inventory:

- The area contains 14 miles of road
- Timber harvest of 198 acres
- Non-National Forest System lands



2005 Inventory Descriptions:***Kelso Mesa #20466 – 36,670 Acres – Mesa County***

General Description: Unit 20466 is located on the east side of the Uncompahgre Plateau, approximately 24 miles southwest of Delta. The unit is bordered by BLM and private lands to the east. These lands are not currently classified as a Wilderness Study Area (WSA).



Elevation Range – 6,600' – 9,200'

Vegetation – The Potential Natural Vegetation is predominately 29% oak-serviceberry, 18% pinyon-juniper-oak, 15% ponderosa pine, 14% spruce-fir-aspens, 10% pinyon-juniper, 9% aspen, and 2% cottonwood-spruce.

Ecoregion – M341B – Northern Canyon Lands (Intermountain Semi-Desert and Desert Province)

Land Type:

44% 30SX – Lower Montane climate zone; mixed sedimentary geology with moderately dissected plateaus, mesas, and canyons.

32% 20SX – Semi Arid climate zone; mixed sedimentary geology with moderate to deeply dissected plateaus, mesas, and canyons.

17% 60SX – Montane and Subalpine climate zone; hard sedimentary rocks supporting deciduous and coniferous forest on moderately dissected, shallowly entrenched upper plateau and mesa surfaces.

Resource Activities:

Current & Ongoing:

- The Musser and Kelso Creek cattle allotments are within this area.
- Existing livestock fences and stockpounds are maintained with motorized equipment.
- There is an existing commercial fall big game hunting operation that is permitted to transport equipment and clients into the area using horse drawn wagons
- The area, previously roaded within its interior, has limited public access; recent decisions in the 2000 Uncompahgre Travel Plan closed these interior roads to motor vehicle access. These routes are now managed as non-motorized trails, which are:
 - Middle Fork of Escalante #631
 - South Bench #626
 - North Kelso #626.1
 - Short Point #615

Wilderness Potential:

Capability:

Environment –

- Naturalness – Much of the area appears natural; however, old road prisms remain and are visible.
- Solitude – Use of the area is heaviest during the fall big game seasons. The sense of solitude is high during the summer season when there is little recreational use within the area because of lack of attractions and difficulty of access. Most of the area's access is blocked by private lands.

Challenge – The area provides a moderate degree of challenge. The gentle terrain and open vegetation type and proximity to private land developments affect a sense of adventure; however within the core of the unit, the relative distance from sights and sounds of developments and roads offers some opportunities for adventure and self-reliance.

Manageability/Boundaries –

- Size/Shape – The area is large and of a manageable configuration.
- Boundaries – Some minor adjustments to the boundary around the private lands might need to be considered. The remaining boundaries follow established roads or identifiable topographic features.

Special Features/Activities – No other area of this size and remoteness and difficulty of access is found on the Uncompahgre Plateau.

Evaluation: The area is **capable** of wilderness consideration.

Availability:

Recreation – Non-motorized trails are within this area being utilized by horse drawn wagon during the fall big game hunting season.

Water – The State of Colorado has applied for water rights in the North Fork of Escalante Creek.

Timber – There are approximately 2,900 acres of land that are tentatively suitable for producing timber for wood fiber production within this unit.

Minerals – Portions of this area are available for oil and gas leasing. Currently there are no existing or pending leases.

Wildlife – The area is important big game summer range.

Management Considerations – Private lands border this area; development of the lands along the western perimeter is beginning and expected to continue.

Evaluation – Big game habitat improvement needs and potential fuels reduction projects along the private land interface, and mechanical recreation uses make this area **not available** for further wilderness consideration.

Need:

Nearby Wilderness – approximate distance away:

- Tabeguache Area – 15 miles
- Roubideau Area – 15 miles
- Gunnison Gorge Wilderness – 30 miles
- Black Ridge Canyon Wilderness – 45 miles
- Mt Sneffels – 45 miles
- West Elk Wilderness – 50 miles
- Lizard Head Wilderness – 55 miles
- Uncompahgre Wilderness – 55 miles