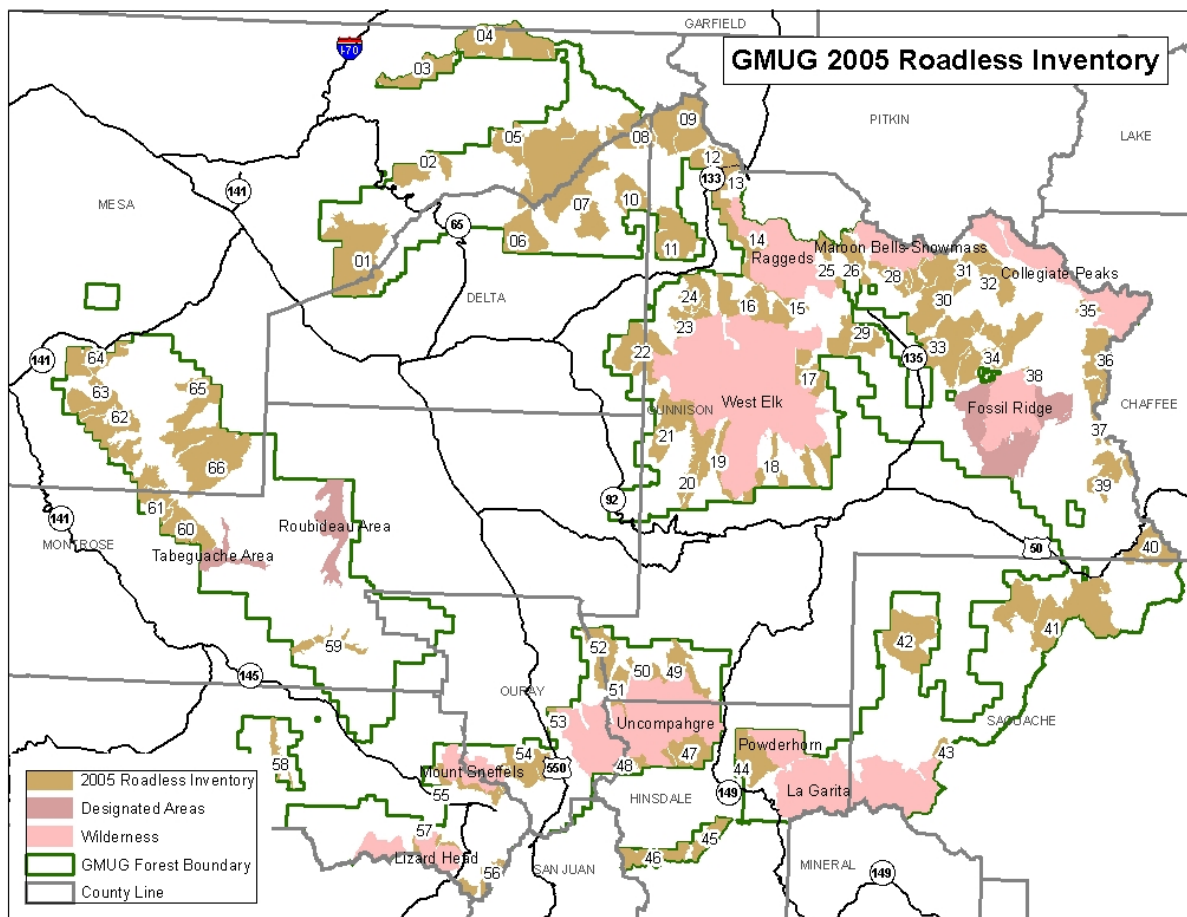


# 2005 ROADLESS INVENTORY & EVALUATION OF POTENTIAL WILDERNESS AREAS

The following document contains evaluations of individual roadless units within the 2005 Roadless Inventory for the GMUG National Forest. Each unit offers a description of the existing conditions based on the following items:

**Inventory:** Using criteria from Forest Service Directives, 65 units were initially identified as the 2005 Roadless Inventory. Simply stated, the roadless inventory is comprised of National Forest System lands greater than 5,000 acres or lands contiguous with other roadless/wilderness areas that do not contain: 1) classified (authorized) roads, 2) significant alterations to the landscape, or 3) permanent improvements. Figure 1 illustrates the 65 roadless units which are also summarized in Table 1. Table 2 describes the proposed management for each Roadless Unit.



**Figure 1.** GMUG 2005 Roadless Inventory Units.

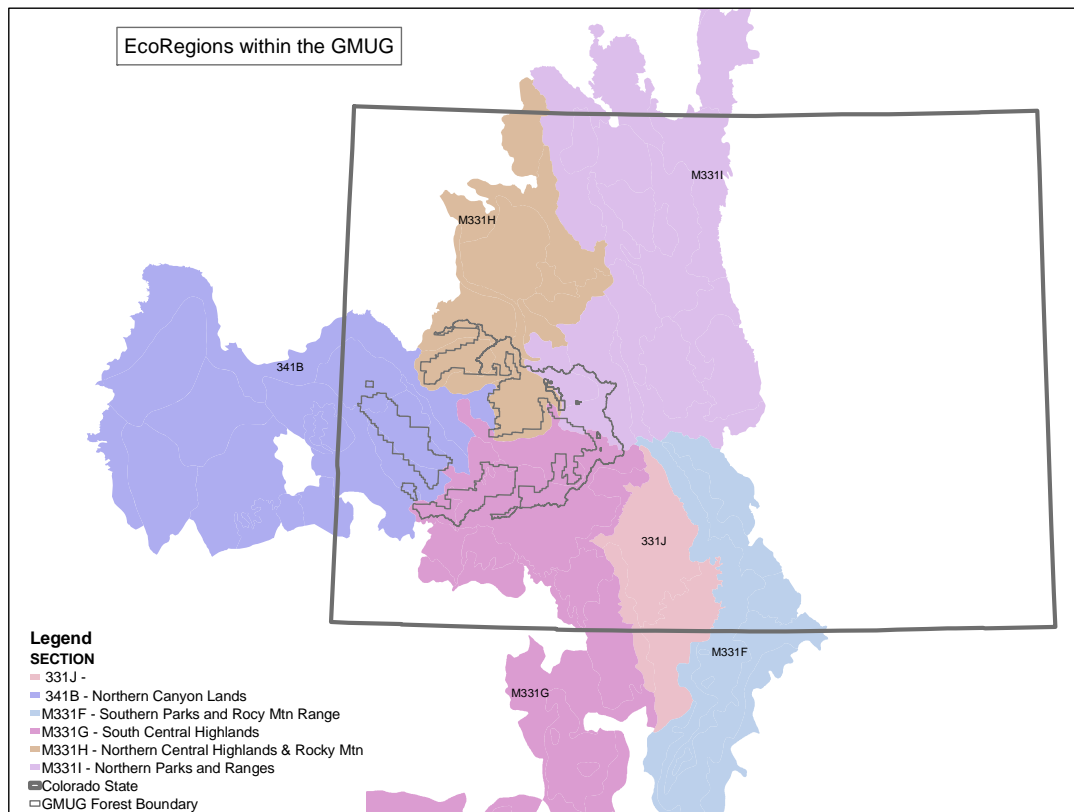
**Description of the Inventory Unit** – each roadless unit is described by a unique number identifier (204##), location, physical attributes, and existing uses.

**Geographic location** – location is described in terms of distance to local towns/cities and defines individual unit boundaries.

## Eco-Section

Eco-Section is a national mapping framework of ecological units. Units are based on associations of biotic and environmental factors. These factors include climate, geomorphic processes, topography, and stratigraphy.

The GMUG falls within portions of four Ecological Sections that are illustrated on Figure 2 and briefly described below.



**Figure 2.** EcoRegions within the GMUG.

### **Section 341B – Northern Canyon Lands**

On the GMUG, Section 341B is represented by the Uncompahgre Plateau Geographic Area.

Section 341B occurs within the Colorado Plateau physiographic province and is located in the eastern portion of Utah and western Colorado. The area is eroded by the Colorado River and its tributaries. Deep sheer-walled canyons, canyonlands, lines of cliffs, low plateaus, mesas, buttes, and badlands dominate the landscape. Major landforms are the San Rafael Swell, Henry Mountains, Abajo Mountains, La Sal Mountains, and Circle Cliffs. Elevation ranges from 4,200 to 12,700 ft.

### **Section M331G – South-Central Highlands**

On the GMUG, Section M331G is represented by the San Juan Geographic Area and the Cochetopa area of the Gunnison Basin Geographic Area.

Section M331G is comprised of steeply sloping to precipitous mountains that are dissected by many narrow stream valleys with steep gradients. Upper mountain slopes and crests may be covered by snowfields and glaciers. High plateaus and steep walled canyons are common, especially in the west. Elevation ranges from 7,545 to 14,110 ft.

### **Section M331H – North-Central Highlands and Rocky Mountain**

On the GMUG, Section M331H is represented by the Grand Mesa and North Fork Valley Geographic Areas and the West Elk portion of the Gunnison Basin GA.

Section M331H includes steeply sloping to precipitous flat-topped mountains dissected by narrow stream valleys with steep gradients. High plateaus have steep walled canyons. There are gently rolling mountain parks, mountain ridges, and foothills. Elevation ranges from 5,600 to 12,000 ft.

### **Section M331I – Northern Parks and Ranges**

On the GMUG, Section M331I is represented by the Elk Mountain and Saguache Mountain Ranges.

Section M331I is comprised of steeply sloping to precipitous mountains that are dissected by many narrow stream valleys with steep gradients. Areas have gently rolling mountain parks and valleys with some mountain ridges. Rugged hills and low mountains are found in narrow bands along the eastern slopes of the Rocky Mountains. These hills are strongly dissected and in many places are crossed by large streams flowing eastward from the mountains. Elevation ranges from 5,575 to 14,410 ft.

**Land type:** A further refinement of Ecological Section that is based on climate zone, geologic formations, soils, and Potential Natural Vegetation.

**Vegetation:** Potential Natural Vegetation (PNV) – The Potential Natural Vegetation is based on environmental factors such as soils, slope, aspect, climate, and elevation that determine the plant communities that potentially can grow on a given area. The stable plant community that establishes in the absence of any disturbances (i.e., fire, insect mortality, drought, harvest) is called the climax plant community. The area where a given climax plant community can grow is classified as a Potential Natural Vegetation type.

**Current and Ongoing Resource Activities:** This section outlines and describes existing or future planned activities occurring within the roadless unit. Items discussed include range allotments, trail systems, timber harvest, prescribed fire, wildlife projects, water developments, and mineral leasing.

**Wilderness Potential** – Lands within the Roadless Inventory are further evaluated for their potential as wilderness. That evaluation is based on wilderness Capability, Availability, and Need. Table 3 summarizes each Roadless Unit's wilderness potential.

**Capability** – The capability of a potential wilderness area is the degree to which that area contains the basic characteristics that make it suitable for wilderness.

Characteristics considered in this evaluation are:

**Environment** – The degree to which an area appears to be free from disturbance so that the normal biological processes continue and the degree to which the area provides a visitor opportunity for solitude and sense of remoteness.

**Challenge** – The degree to which the area offers visitors opportunity to experience adventure and self-reliance, often measured by physical character of the land (terrain and vegetation) and proximity to sights and sounds of developments and travel systems.

**Manageability of Boundaries** – Consideration of the ability to manage the area as wilderness, factors considered are size, shape, and juxtaposition to external influences.

**Special features** – The area's capability to provide other values such as geologic, scenic, or cultural.

**Availability** – The determination of availability of the area for wilderness is conditioned by the value of the wilderness resource compared to the value of and need for other resources. Examples of values that may conflict with wilderness values are oil and gas exploration, timber harvest, motorized/mechanized travel (summer or winter), fuels reduction needs, wildlife habitat treatments, and/or water needs. All lands identified as capable are further evaluated for potential wilderness. Table 4 lists those lands that have been identified as available for wilderness. A more in-depth description of availability criteria can be found on page 258.

**Need** – The degree to which an area contributes to the overall National Wilderness Preservation System. Need is evaluated on a regional basis with such factors as geographic distribution and representations of landforms and ecosystems being considered. Figure 3 illustrates the distribution of wilderness and Wilderness Study areas within the State of Colorado by Ecological Section. Table 5 summarizes the need evaluation for each area identified as available. A more in-depth description of Need Criteria can be found on page 259.

Need factors:

**Factor 1** – Location and size

**Factor 2** – Visitor pressure on existing wilderness lands

**Factor 3** – Opportunity to provide non-wilderness recreation

**Factor 4** – Need to provide a sanctuary for sensitive and threatened species.

**Factor 5** – Ability to add diversity to wilderness lands within ecological regions.

**Factor 6** – Public support for wilderness designation.

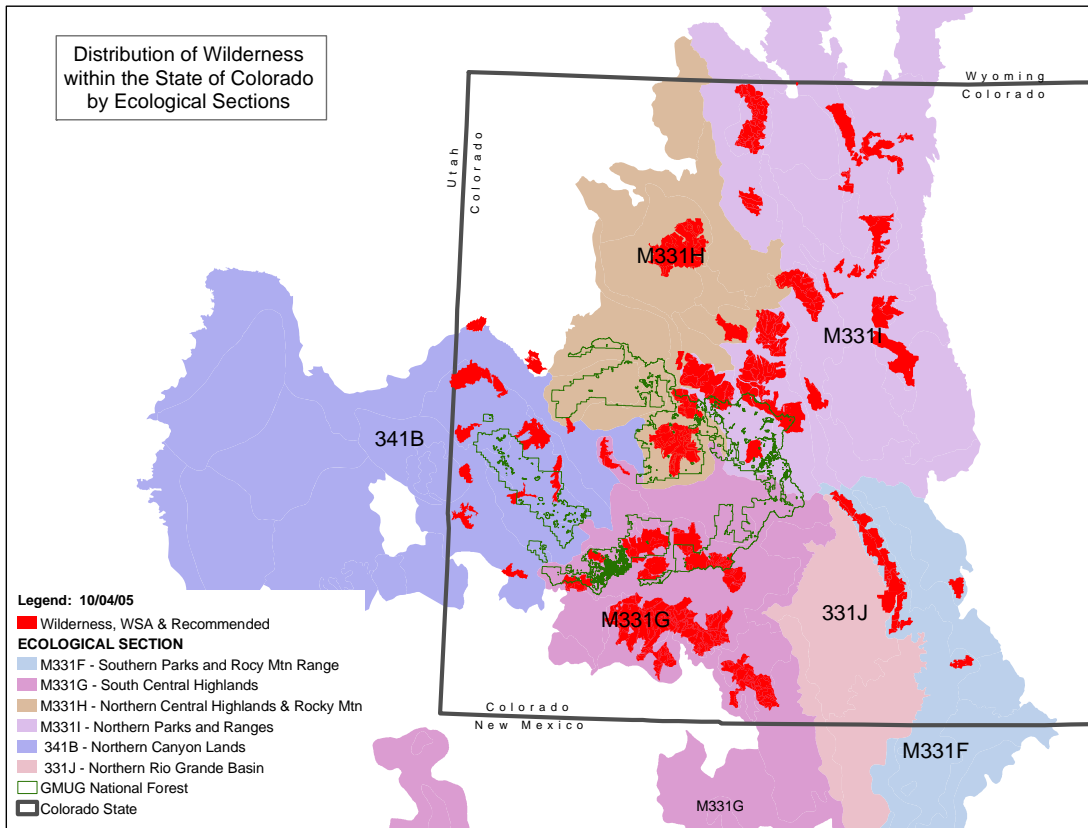


Figure 3. Distribution of Wilderness within the State of Colorado by Ecological Sections.

**Table 1.** Summary of Roadless Units on the GMUG NF.

<b>Geographic Area</b>	<b>2005 Roadless</b>	<b>NAME</b>	<b>ACRES rounded</b>	<b>Previously a part of RARE II #:</b>	<b>County(s)</b>	<b>Elevation Minimum</b>	<b>Elevation Maimum</b>	<b>Eco-Section</b>	<b>Adjacent lands</b>
Grand Mesa	01	Kannah Creek	34,630	195	Mesa/Delta	6000	10300	M331H	BLM WSA*
Grand Mesa	02	Cottonwoods	10,890	194	Mesa	7400	10000	M331H	Pvt - BLM
Grand Mesa	03	Sunnyside	10,660	193	Mesa	6000	9200	M331H	WR - SIA
Grand Mesa	04	Battlements	24,650	193	Mesa/Garfield	7600	11000	M331H	WR - 5.42
Grand Mesa	05	Salt Creek	9,010	192	Mesa	8000	10300	M331H	Pvt - BLM
Grand Mesa	06	Currant Creek	10,770	191	Delta	7500	10200	M331H	Pvt - BLM
North Fork Valley	07	Flattops/Elk Park	70,640	191	Mesa/Delta	6600	11300	M331H	Pvt - BLM
North Fork Valley	08	Turner Creek	13,000	186	Delta	8000	10800	M331H	GMUG
North Fork Valley	09	Clear Fork	24,200	186	Gunnison	7500	11800	M331H	WR - Rx 5.43
North Fork Valley	10	Electric Mountain	9,680	185	Delta	7900	10300	M331H	GMUG
North Fork Valley	11	Pilot Knob	16,220	184	Gunnison	6900	9800	M331H	BLM-Pvt
North Fork Valley	12	Huntsman Ridge	9,190	182	Delta	7400	10500	M331H	WR- Rx 1.31
North Fork Valley	13	Tomahawk	12,500	181	Gunnison	7100	11000	M331H	Pvt - BLM
North Fork Valley	14	Munsey/Erickson	3,540	181	Gunnison	6800	10400	M331H	GMUG
North Fork Valley	15	Horse Ranch Park	3,800	181	Gunnison	5100	13500	M331H	GMUG
North Fork Valley	16	Beckwiths	18,560	196	Gunnison	6400	12400	M331H	GMUG
Gunnison Basin	17	Castle	8,720	198	Gunnison	8900	12000	M331H	Pvt
Gunnison Basin	18	Beaver/Steuben/East Elk	11,270	198	Gunnison	8200	11600	M331H	BLM-State-Pvt
Gunnison Basin	19	Soap Creek	6,960	196	Gunnison	7600	10200	M331H	Pvt - BLM
North Fork Valley	20	Curecanti	12,400	196	Gunnison	8100	10200	M331H	Pvt
North Fork Valley	21	Mendicant	17,850	196	Gunnison	7600	11900	M331H	GMUG
North Fork Valley	22	Mt Lamborn	18,780	196	Delta/Gunnison	7100	11700	M331H	BLM-Pvt
North Fork Valley	23	Sunset	5,880	196	Gunnison	7400	9900	M331H	GMUG
North Fork Valley	24	Flatirons	8,730	196	Gunnison	6300	9100	M331H	BLM-Pvt
Gunnison Basin	25	Poverty Gulch	5,540	181	Gunnison	9000	13300	M331H	WR - Rx 1.31
Gunnison Basin	26	Gothic	7,550	199	Gunnison	9400	12700	M331I	WR - Rx 4.3
Gunnison Basin	28	Deer Creek	9,430	180	Gunnison	9000	12600	M331I	Pvt
Gunnison Basin	29	Whetstone	14,170	200	Gunnison	9000	12500	M331H	Pvt
Gunnison Basin	30	Double Top	23,740	180	Gunnison	9200	12800	M331I	Pvt - WR Rx 1.31
Gunnison Basin	31	Italian Mtn	8,730	180	Gunnison	10000	13200	M331I	GMUG
Gunnison Basin	32	American Flag Mtn	9,520	202	Gunnison	9800	12400	M331I	GMUG

<b>Geographic Area</b>	<b>2005 Roadless</b>	<b>NAME</b>	<b>ACRES rounded</b>	<b>Previously a part of RARE II #:</b>	<b>County(s)</b>	<b>Elevation Minimum</b>	<b>Elevation Maimum</b>	<b>Eco-Section</b>	<b>Adjacent lands</b>
Gunnison Basin	33	Granite Basin	25,450	202	Gunnison	8500	12200	M331I	Pvt
Gunnison Basin	34	Matchless Mtn	22,420	203	Gunnison	8700	12400	M331I	GMUG
Gunnison Basin	35	Texas Creek	2,320	180	Gunnison	9900	11600	M331I	GMUG
Gunnison Basin	36	Sanford Basin	13,050	205	Gunnison	9800	13500	M331I	PSI - Rdless
Gunnison Basin	37	Mirror Lake	6,010	206	Gunnison	10200	13000	M331I	PSI - Rdless
Gunnison Basin	38	Union	1,560	204	Gunnison	9200	11700	M331I	GMUG
Gunnison Basin	39	Canyon Ck/Antero	12,950	207	Gunnison	9400	12600	M331I	PSI - Rdless
Gunnison Basin	40	Agate Creek	12,700	358	Gunnison	8900	12400	M331I	RG - Rdless
Gunnison Basin	41	Cochetopa Hills	46,230	209	Saguache	8400	11700	M331G	RG
Gunnison Basin	42	Sawtooth Mtn	22,850	212	Saguache	9200	12100	M331G	BLM
Gunnison Basin	43	Cochetopa Creek	2,540	217	Saguache	9700	10900	M331G	RG
Gunnison Basin	44	Cannibal Plateau	14,470	218	Hinsdale	9600	12600	M331G	BLM - Pvt
Gunnison Basin	45	Carson	5,990	220	Hinsdale	9400	13300	M331G	RG Rdless - BLM
Gunnison Basin	46	Cataract	9,980	220	Hinsdale	10900	13900	M331G	RG Rdless - BLM WSA
Gunnison Basin	47	Crystal Peak	11,520	221	Hinsdale	9400	13100	M331G	BLM - Pvt
Gunnison Basin	48	Matterhorn	3,590	225	Hinsdale	10300	13200	M331G	BLM WSA
San Juans	49	Failes Ck/Soldier Ck	8,780	224,223	Gunnison	8800	11900	M331G	GMUG
San Juans	50	Little Cimarron	4,220	224	Gunnison	9200	12400	M331G	GMUG
San Juans	51	Turret Ridge	5,460	224	Gunnison/Hinsdale	9100	10400	M331G	GMUG
San Juans	52	Cimarron Ridge	12,210	226	Gunnison/Ouray	8700	11500	M331G	BLM - Pvt
San Juans	53	Baldy	2,320	228	Ouray	7400	10600	M331G	Pvt
San Juans	54	Whitehouse	14,400	na	Ouray	8000	14100	M331G	GMUG
San Juans	55	Last Dollar/Sheep Ck	6,060	232	San Miguel	9000	13700	M331G	Pvt
San Juans	56	Hope Lake	6,810	240	San Miguel	9900	13800	M331G	SJ - Rdless
San Juans	57	Wilson	2,530	238,237	San Miguel	8900	13700	M331G	Pvt
Unc. Plateau	58	Naturita Canyon	4,600	na	San Miguel	6800	8200	341B	BLM
Unc. Plateau	59	Horsefly Canyon	6,140	na	Montrose	6200	7900	341B	BLM
Unc. Plateau	60	Windy Point	12,790	na	Montrose	6600	9000	341B	BLM
Unc. Plateau	61	Johnson Basin	11,960	247	Montrose/Mesa	7000	9200	341B	BLM
Unc. Plateau	62	Long Canyon	17,510	246	Mesa	6400	9100	341B	BLM
Unc. Plateau	63	Calamity Basin	12,240	245	Mesa	6500	9100	341B	BLM
Unc. Plateau	64	UnawEEP	12,120	245	Mesa	6500	9400	341B	BLM - Pvt
Unc. Plateau	65	Dominguez	12,760	244	Mesa	6600	9000	341B	BLM WSA

Geographic Area	2005 Roadless	NAME	ACRES rounded	Previously a part of RARE II #:	County(s)	Elevation Minimum	Elevation Maimum	Eco-Section	Adjacent lands
Unc. Plateau	66	Kelso Mesa	36,670	243	Mesa	6600	9200	341B	BLM
<b>TOTAL ACRES</b>			<b>853,100</b>						*adjacent not adjoining

**Table 2.** GMUG Draft 2005 Roadless Inventory and Proposed Management Theme

ID	Roadless Unit	Proposed Management Theme													
		1		2		3		4		5		7		8	
		acres	%	acres	%	acres	%	acres	%	acres	%	acres	%	acres	%
1	Kannah Creek					29246	85%			5367	15%				
2	Cottonwoods									10888	100%				
3	Sunnyside			6760	63%	3899	37%			4	<1%				
4	Battlements									24620	100%				
5	Salt Creek					41	<1%			8970	99%				
6	Currant Creek					10462	97%			301	3%				
7	Flattops/Elk Park					58299	83%			12335	17%				
8	Turner Creek									12896	99%			120	<1%
9	Clear Fork									24161	100%				
10	Electric Mountain									9676	100%				
11	Pilot Knob									16215	100%				
12	Huntsman Ridge							1148	12%	8042	88%				
13	Tomahawk	22	<1%			11306	91%	1017	8%	92	<1%				
14	Munsey/Erickson	2631	74%					905	26%						
15	Horse Ranch Park							3804	100%						
16	Beckwiths					12761	70%	5720	30%	35	<1%				
17	Castle	2	<1%			8720	100%								
18	Beaver/East Elk/Steuben	3590	32%			7218	64%			464	4%				
19	Soap Creek	6073	87%			886	13%								
20	Curecanti	5944	48%			6451	52%								
21	Mendicant	14029	79%							3813	21%				



ID	Roadless Unit	Proposed Management Theme													
		1		2		3		4		5		7		8	
		acres	%	acres	%	acres	%	acres	%	acres	%	acres	%	acres	%
22	Mount Lamborn	9248	49%			3807	20%			5721	30%				
23	Sunset					4214	72%			1668	28%				
24	Flat Irons									8732	100%				
25	Poverty Gulch	5537	100%												
26	Gothic			1066	15%	4199	57%	877	12%					1233	17%
28	Deer Creek					9415	99%	18	<1%						
29	Whetstone	12824	91%							1344	9%				
30	Double Top					23437	99%	304	1%						
31	Italian Mountain					8458	97%	258	3%	9	<1%				
32	American Flag Mountain					8192	86%	120	1%	1188	12%			18	<1%
33	Granite Basin	9224	36%			12865	55%	973	4%	2386	9%				
34	Matchless Mountain					14914	67%	718	3%	6787	30%				
35	Texas Creek									2135	100%				
36	Sanford Basin	6497	50%			3531	27%	137	1%	2888	22%				
37	Mirror Lake					4820	80%	1067	18%			163	3%		
38	Union	1560	100%												
39	Canyon Creek/Antero					11194	94%			755	6%				
40	Agate Creek					9961	79%			2734	22%				
41	Cochetopa Hills					36878	80%	1031	2%	8166	17%			155	<1%
42	Sawtooth	22845	100%												
43	Cochetopa Creek	2539	100%												
44	Cannibal Plateau			6	<1%	13303	92%	15	<1%	1145	8%				
45	Carson	5710	95%					281	5%						
46	Cataract	9978	100%												
47	Crystal Peak	1114	10%			10394	90%								
48	Matterhorn	3587	100%												
49	Failes Creek/Soldier Creek	6210	71%			1141	14%			1429	16%				
50	Little Cimarron	4222	100%												

ID	Roadless Unit	Proposed Management Theme													
		1		2		3		4		5		7		8	
		acres	%	acres	%	acres	%	acres	%	acres	%	acres	%	acres	%
51	Turret Ridge	5168	95%					294	5%						
52	Cimarron Ridge					11958	98%	256	2%						
53	Baldy					2320	100%								
54	Whitehouse Mountain	10326	72%			4080	28%							16	<1%
55	Last Dollar/Sheep Creek	4026	66%			2031	34%	1	<1%						
56	Hope Lake	6586	97%			223	3%								
57	Wilson	811	30%			1716	64%	145	5%						
58	Naturita Canyon	4607	100%												
59	Horsefly Canyon	6056	99%							3	<1%			85	<1%
60	Windy Point	3	<1%			176	1%			12787	99%				
61	Long Canyon			3178	26%	3857	32%			4912	41%				
62	Campbell Point					8773	50%			8735	50%				
63	Calamity					6	<1%			12236	99%				
64	Unaweep	9209	76%			2913	24%								
65	Dominguez					10910	86%			1834	14%				
66	Kelso Mesa					33759	92%			2913	8%				
	<b>Total Roadless Acres</b>	180179	<b>21%</b>	11009	<b>1%</b>	412270	<b>48%</b>	19242	<b>2%</b>	228671	<b>26%</b>	163	<b>&lt;1%</b>	1615	<b>&lt;1%</b>

Data includes Riparian areas as Theme 3

**Table 3.** Potential Wilderness Evaluation Summary

<b>Roadless Unit</b>	<b>Available Acres</b>	<b>Capable Acres</b>	<b>Inventory Acres</b>	<b>Total Acres</b>
1		29356	5277	34633
2		8870	2019	10889
3		10663		10663
4		24651		24651
5		7997	1015	9012
6		10772		10772
7	19725	43658	7252	70635
8		13022		13022
9		24203		24203
10		8393	1283	9676
11		8159	8057	16216
12		9190		9190
13			12498	12498
14	2634		905	3539
15			3804	3804
16		18555		18555
17		8721		8721
18	3589		7682	11271
19	5541		1419	6960
20	5944	6453		12397
21	16281		1565	17846
22		14940	3837	18777
23		2976	2908	5884
24		4088	4644	8732
25	5539			5539
26		6469	1077	7546
28		6052	3383	9435
29	12824		1344	14168
30		23738		23738
31	8729			8729
32		9516		9516
33	9223	16227		25450
34			22419	22419
35		2315		2315
36		6516	6537	13053
37			6014	6014
38	1560			1560
39	11950			11950
40		12698		12698
41		33023	13207	46230
42	22846			22846
43	1597		942	2539
44		14468		14468

Roadless Unit	Available Acres	Capable Acres	Inventory Acres	Total Acres
45	5991			5991
46	9979			9979
47		11523		11523
48	3590			3590
49	6212		2570	8782
50	4222			4222
51	5169	294		5463
52		12214		12214
53			2320	2320
54	10326		4080	14406
55	3637	2032	389	6058
56			6811	6811
57	811		1723	2534
58		4607		4607
59		6144		6144
60		12791		12791
61		11956		11956
62		10440	7071	17511
63		4360	7883	12243
64	9209	1	2912	12122
65		10893	1870	12763
66		36672		36672
Grand Total	182,156	512,929	156,717	853,456

**Table 4.** Lands Identified as Available for Potential Wilderness

Roadless Unit#	AREA NAME	Approx Acres
7	Elk Park	19,720
14	Munsey/Erickson	2,630
18	Beaver	3,590
19	Soap Creek	5,540
20	Curecanti	5,940
21	Mendicant	16,280
25	Poverty Gulch	5,540
29	Whetstone	12,820
31	Italian Mountain	8,730
33	Granite Basin	9,220
38	Union	1,560
39	Canyon Creek	10,290
42	Sawtooth	22,850
43	Cochetopa Creek	1,600
45	Carson	5,980
46	Cataract	9,980
48	Matterhorn	3,590

Roadless Unit#	AREA NAME	Approx Acres
49	Failes Creek/Soldier Creek	6,210
50	Little Cimarron	4220
51	Turret Ridge	5,170
54	Whitehouse Mountain	10,330
55	Last Dollar/Sheep Ck	3,640
57	Wilson	810
64	Unaweep	9,210
	<b>Total Acres:</b>	<b>185,500</b>

**Table 5.** Summary of Need Factors for Potential Wilderness\*

Name / Number	Approx Acres	1	2	3	4	5	6	Recommend
7. Elk Park	19720	0	0	0	0	0	0	No
14. Munsey	2630	1	0	1	0	0	1	Yes
18. Beaver Ck	3590	1	0	1	0	0	1	Yes
19. Soap Creek	5540	1	0	1	0	0	1	Yes
20. Curecanti	5940	1	0	0	0	0	1	Yes
21. Mendicant	16280	1	0	0	0	0	0	No
25. Poverty Gulch	5540	1	0	1	0	0	1	Yes
29. Whetstone	12820	0	0	0	0	1	0	Yes
31. Italian Mtn	8730	0	0	0	0	0	0	No
33. Granite Basin	9220	0	0	0	0	1	0	Yes
38. Union Park	1560	1	0	1	0	0	1	Yes
39. Canyon Ck	10290	0	0	0	0	1	1	No
42. Sawtooth	22850	0	0	0	0	1	0	Yes
43. Cochetopa Ck	1600	1	0	1	0	0	1	Yes
45. Carson	5980	0	0	0	0	0	0	No
46. Cataract	9980	1	0	0	0	0	0	Yes
48. Matterhorn	3590	1	0	1	0	0	0	Yes
49. Failes Ck	6110	1	0	1	0	0	0	Yes
50. Little Cim.	4220	1	0	1	0	0	1	Yes
51. Turret Ridge	5170	1	0	0	0	0	1	Yes
54. Whitehouse	10330	1	0	0	0	0	1	Yes
55. Last Dollar	3630	1	0	1	0	0	1	Yes
57. Wilson	810	1	0	1	0	0	1	Yes
64. Unaweep	9210	1	0	0	0	1	0	Yes
<b>Totals</b>	<b>185,830</b>							<b>124,800</b>

\*A more in depth evaluation can be found in the Roadless document titled *Availability and Need*.