

Campgrounds

Plumas National Forest



Welcome... to the Plumas National Forest! This Northern California forest is located in the northern edge of the Sierra Nevada, just south of the Cascade Range. The Plumas National Forest occupies 1.2 million acres of scenic mountain lands, offering abundant opportunities for camping.

Camping Information

Camping on the Plumas National Forest offers opportunities for nearly every desire and need. For those looking for solitude you will enjoy exploring the backcountry, or camping in one of our “non fee” campgrounds. If you are looking for more convenience, then you will find developed recreation areas offering paved roads, piped water, flush or vault toilets, and sites are available for individuals with physical disabilities. Generally, fee campgrounds are open from **April** through **October**. Those at higher elevations open in mid to late May. These campgrounds are operated by permit with the U.S. Forest Service. Many sites can be reserved, but some sites are kept on a “first come-first serve” basis.

Reservations and first come first serve.

Open camp sites are available on a first come first serve basis in campgrounds within the reservation system. Campers without reservations may need to move after second night if site becomes reserved.



Reservations

Toll Free - 877 444-6777

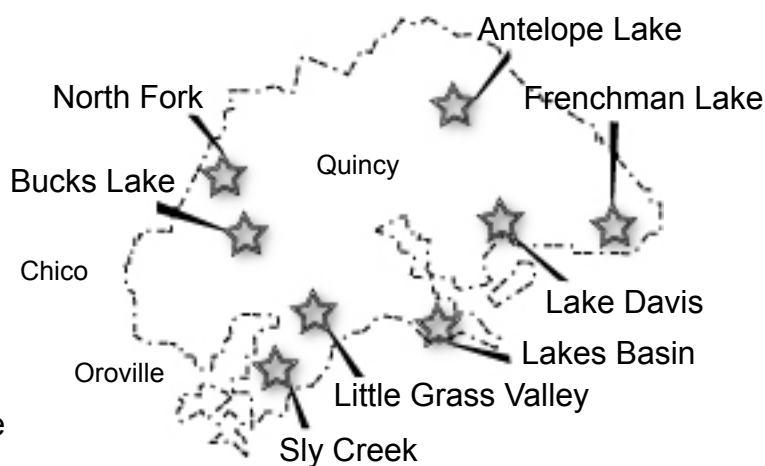
TDD - 877 833-6777

Intl - 518 883-3639

Internet - www.ReserveUSA.com

Developed Recreation Areas

There are 8 developed recreation areas within the Plumas National Forest. The attached sheets will describe the individual recreation areas, helping you choose the one that’s right for you.



“Non Fee” Campgrounds

There are 14 “non fee” campgrounds throughout the forest. These campgrounds have vault toilets, picnic tables, and primitive fire rings. There is NO PIPED WATER.

Practice the “LEAVE NO TRACE” ethic

When you leave your campsite take all garbage, large and small.

PACK IT IN!
PACK IT OUT!



United States
Department of
Agriculture



Forest Service
Pacific Southwest Region
Plumas National Forest
www.fs.fed.us/r5/plumas

Plumas National Forest
P.O. Box 11500 Quincy, Ca. 95971
Phone: (530) 283-2050
Revised 06/21/06

“Pick Your Own Spot” Camping

Most of the land in the National Forest is open to camping, free of charge, just for the choosing. Simply find the spot that suits you and camp.

Make sure that you are on national forest land. A forest map can be purchased at our Forest Service offices.

Camping outside a developed campground means:

No Garbage Pick-Up - take all garbage with you.

No piped water - boil any lake, stream or spring water for 5 minutes, or bring your own water

No restrooms - You will need to make your own toilet area. Pick a place away from your camp and at least 100' from any water source.

Campfire Permits

Campfire permits are required for fires built outside of developed campgrounds from May 1st. through the end of fire season. (usually October 31st) Campfire permits can be obtained from the Calif. Dept. of Forestry, Bureau of Land Management, and the U.S. Forest Service.

PLEASE BE FIRE SAFE!!!

Water Quality -

While water quality testing is not performed on open water sources such as lakes, streams and springs, it is tested monthly in our developed campgrounds. For untested water sources, boil or treat before using.

Weather -

Weather in the mountains can be very unpredictable. Thunderstorms are common throughout the summer months, and evenings can be very chilly.

Be Prepared!!! Bring Warm Clothes

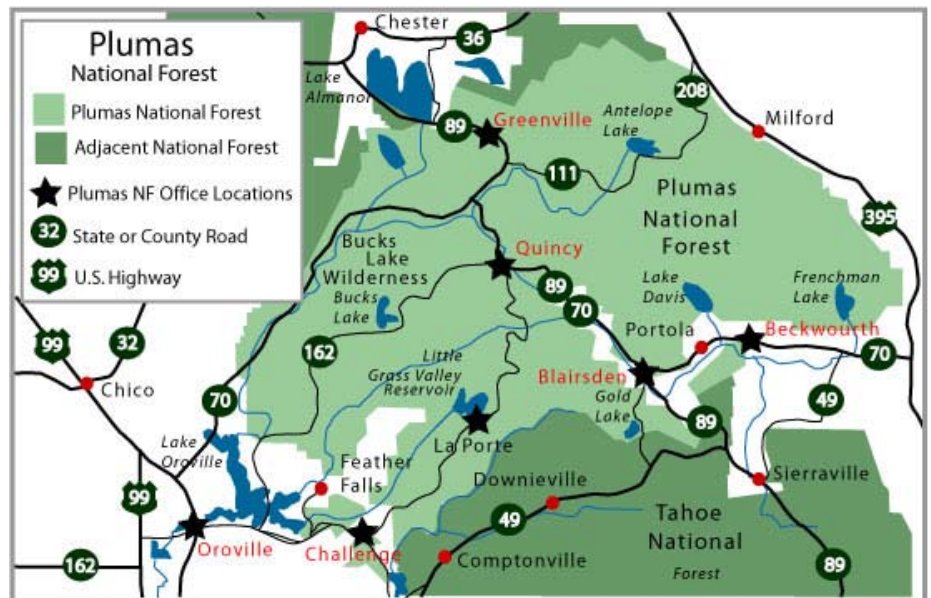
Stay Limit

- In "developed" and "non fee" campgrounds there is a **14** day stay limit, unless posted otherwise.
- Camping on all other national forest lands on the Plumas NF is limited to a 30 day maximum stay.

You Should Know

- Firearms including air rifles may not be discharged in developed recreation areas.
- Check current regulations for Off-Highway Vehicle use in developed recreation areas.
- Domestic Pets are welcome in the campgrounds, but must be kept on a leash.

Reaching the Plumas



For more Information call one of our Forest Service Offices

Beckwourth RD (530) 836-2575
Mt. Hough RD (530) 283-0555
Greenville Info Center (530) 284-7126
Feather River RD (530) 534-6500
Challenge Visitor Center (530) 675-1146

PLEASE OBSERVE ALL RECREATION AND CAMPING RULES, AND REMEMBER, ALL STATE AND COUNTY ORDINANCES APPLY TO NATIONAL FOREST

All are Welcome

The U.S. Department of Agriculture (USDA) prohibits discrimination in all its programs and activities on the basis of race, color, national origin, age, disability, and where applicable, sex, marital status, familial status, parental status, religion, sexual orientation, genetic information, political beliefs, reprisal, or because all or a part of an individual's income is derived from any public assistance program. (Not all prohibited bases apply to all programs.) Persons with disabilities who require alternative means for communication of program information (Braille, large print, audiotape, etc.) should contact USDA's TARGET Center at (202) 720-2600 (voice and TDD). To file a complaint of discrimination write to USDA, Director, Office of Civil Rights, 1400 Independence Avenue, S.W., Washington, D.C. 20250-9410 or call (800) 795-3272 (voice) or (202) 720-6382 (TDD). USDA is an equal opportunity provider and employer.