



PURPOSE AND CONTENTS OF THIS MAP

This map dated 10/01/2008 shows the National Forest System roads, National Forest System trails, and the areas on National Forest System lands in the Chattahoochee-Oconee National Forest that are designated for motor vehicle use pursuant to 36 CFR 212.51. The map also contains a list of those designated roads, trails, and areas that enumerates the types of vehicles that are allowed on each route and in each area and any seasonal restrictions that apply on those routes and in those areas.

Designation of a road, trail, or area for motor vehicle use by a particular class of vehicle under 36 CFR 212.51 should not be interpreted as encouraging or inviting use, or to imply that the road, trail or area is passable, actively maintained, or safe for travel. Motor vehicle designations include parking along designated routes and at facilities associated with designated routes when it is safe to do so and when not causing damage to National Forest System resources. Seasonal weather conditions and natural events may render designated routes and trails impassable for extended periods. Designated areas may contain dangerous or impassable terrain. Many designated roads and trails may be passable only by high-clearance vehicles or four-wheel drive vehicles. Maintenance of designated roads and trails will depend on available resources, and many may receive little maintenance.

This motor vehicle use map identifies those roads, trails, and areas designated for the motor vehicle use under 36 CFR 212.51 for the purpose of enforcing the prohibition at 36 CFR 261.13. This is a limited purpose. The other public roads are shown for information and navigation purposes only and are not subject to designation under the Forest Service travel management regulation.

These designations apply only to National Forest System roads, National Forest System trails, and areas on National Forest System lands.

OPERATOR RESPONSIBILITIES

Operating a motor vehicle on National Forest System roads, National Forest System trails, and in areas on National Forest System lands carries a greater responsibility than operating that vehicle in a city or other developed setting. Not only must the motor vehicle operators know and follow all applicable traffic laws, but they need to show concern for the environment as well as other forest users. The misuse of motor vehicles can lead to the temporary or permanent closure of any designated road, trail, or area. Operators of motor vehicles are subject to State traffic law, including State requirements for licensing, registration, and operation of the vehicle in question.

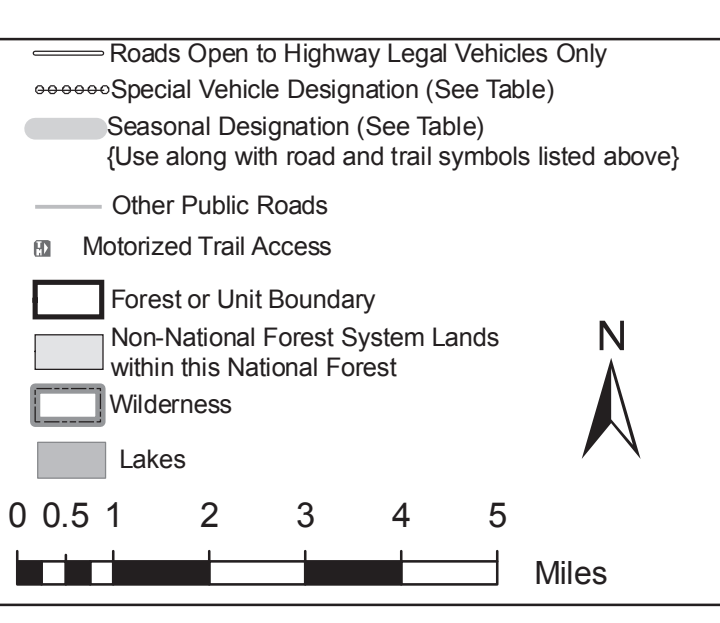
Motor vehicle use, especially off-highway vehicle use, involves inherent risks that may cause property damage, serious injury, and possibly death to participants. Riders should drive cautiously and anticipate rough surfaces and features, such as snow, mud, vegetation, and water crossings common to remote driving conditions. Participants voluntarily assume full responsibility for these damages, risks, and dangers. Motor vehicle operators should take care at all times to protect themselves and those under their responsibility.

Much of the Chattahoochee-Oconee National Forest is remote, and medical assistance may not be readily available. Cellular telephones do not work in many areas of the Chattahoochee-Oconee National Forest. Operators should take adequate food, water, first aid supplies, and other equipment appropriate for the conditions and expected weather.

ALWAYS REMEMBER TO RESPECT PRIVATE LAND! PROTECT YOUR PRIVILEGE! STAY ON DESIGNATED ROADS AND TRAILS AND IN DESIGNATED AREAS.

Read and understand this map in its entirety. If you have questions, please contact the Chattahoochee-Oconee National Forest for clarification.

Road, trail, and area users must comply with this map, as well as all Federal, State, and local laws and regulations. Forest roads are only open to registered vehicles and mopeds in accordance with state law (OCGA 40-2-20, OCGA4-2-8). All other vehicles including "motorized carts", "low speed vehicles", and "all-terrain vehicles" are prohibited. (OCGA 40-1-1) Compliance with these rules is the responsibility of the user.



EXPLANATION OF LEGEND ITEMS

Roads Open to Highway Legal Vehicles Only:
 These roads are open only to motor vehicles licensed under State law for general operation on all public roads within the State.

Special Vehicle Designation:
 This symbol indicates that the road or trail is open to classes of vehicles other than those listed above. Refer to the Seasonal and Special Designation Table for further instructions.

Seasonal Designation:
 This symbol, used in conjunction with one of the other road or trail symbols, indicates that the road or trail is open only during certain portions of the year. Refer to the Seasonal and Special Designation Table for further instructions.

Motorized Trail Access:
 This symbol indicates a trail head for access to a motorized route. Not all motorized routes have trail heads and those that do may range from primitive to developed.

PROHIBITIONS

It is prohibited to possess or operate a motor vehicle on National Forest System lands on the Chattahoochee-Oconee National Forest other than in accordance with these designations (CFR 261.13)

Violations of 36 CFR 261.13 are subject to a fine of up to \$5,000 or imprisonment for up to 6 months or both (U.S.C. 3571(e)). This prohibition applies regardless of the presence or absence of signs.

This map does not display nonmotorized uses, over-snow uses, or other facilities and attractions on the Chattahoochee-Oconee National Forest. Obtain a forest visitor map for more complete information.

Designated roads, trails and areas may also be subject to temporary emergency closures, and visitors must comply with signs notifying them of such restrictions. A national forest may close an order to close a road, trail or area on a temporary basis to protect the life, health, or safety of forest visitors or the natural or cultural resources in these areas. Such a temporary and/or emergency closure are consistent with the Travel Management Rule (36 CFR 212.52(b); 36 CFR 261 subpart B).

The designation "road or trail open to all motor vehicles" does not supersede vehicle size or weight limits imposed through State traffic law.



Information Sources

Chattahoochee-Oconee National Forests
 1755 Cleveland Highway
 Gainesville, GA 30501
 770-297-3000

Blue Ridge District
 1881 Hwy. 515
 Blairsville, GA 30514
 706-745-6928

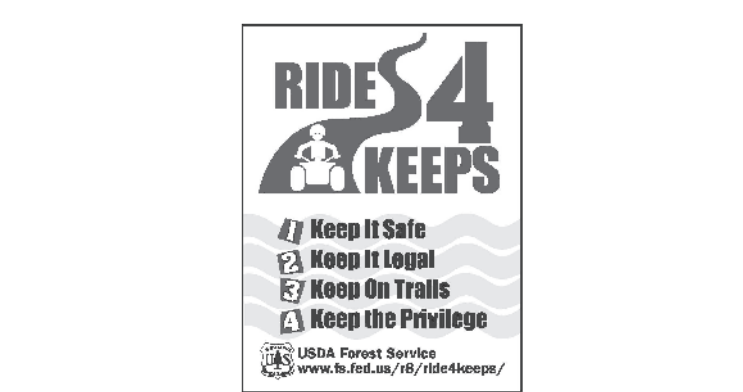
Chattooga River District
 Clayton Office
 800 Highway 441 South
 Clayton, GA 30525
 706-782-3320

Clarkesville Office
 200 Highway 197 North
 Clarkesville, GA 30523
 706-754-6221

Conasauga District
 3941 Highway 76
 Chatsworth, GA 30705
 706-695-8736

Oconee District
 1199 Madison Road
 Eatonton, GA 31024
 706-485-7110/1776

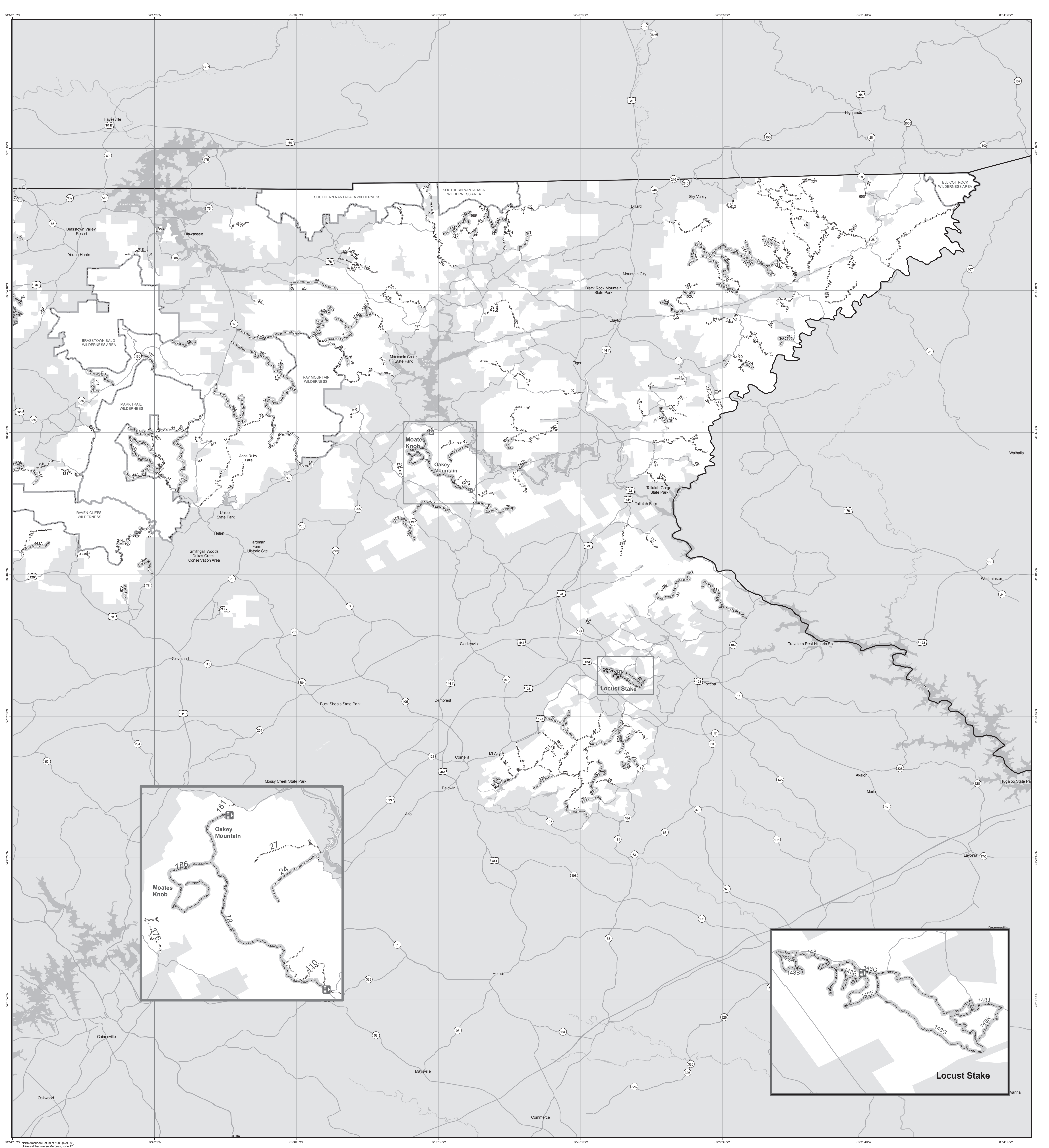
- In Case of Emergency, Contact:
- Rabun Co. Sheriff's Department
706-822-3612
 - Stephens Co. Sheriff's Department
706-886-2525
 - Habersham Co. Sheriff's Department
706-724-6666
 - White Co. Sheriff's Department
706-865-5177
 - Banks Co. Sheriff's Department
706-677-2248
 - Towns Co. Sheriff's Department
706-806-4444
 - Lumpkin Co. Sheriff's Department
706-864-0414
 - Union Co. Sheriff's Department
706-438-6560



Travel & recreate with minimum impact. Respect the environment and the rights of others. Educate yourself! plan and prepare before you go. Allow for future use of the outdoors, by leaving it better than you found it.

Discover the rewards of responsible recreation. For more information (read lightly), go to www.treadlightly.org or call 1-800-958-9900.

The U.S. Department of Agriculture (USDA) prohibits discrimination in all its programs and activities on the basis of race, color, national origin, age, disability, and where applicable, sex, marital status, familial status, parental status, religion, sexual orientation, genetic information, political beliefs, reprisal, or because all or part of an individual's income is derived from any public assistance program. (Not all prohibited bases apply to all programs.) Persons with disabilities who require alternative means for communication of program information (Braille, large print, audio tape, etc.) should contact USDA's TARGET Center at (202) 720-2600 (voice and TDD). To file a complaint of discrimination, write to USDA, Director, Office of Civil Rights, 1400 Independence Avenue, S.W., Washington, D.C. 20250-9410, or call (800) 795-3272 (voice) or (202) 720-6382 (TDD). USDA is an equal opportunity provider and employer.



Seasonal and Special Vehicle Designations

Route Number	Legend	Special Vehicle Designation	Seasonal Designation	Route Number	Legend	Special Vehicle Designation	Seasonal Designation
148	Seasonal Designation	Legal vehicles only, with Seasonal Designation	03-15-1102	155E	Roads open to highway legal vehicles only, with Seasonal Designation	Seasonal Designation	03-15-0111
148	Special Vehicle Designation	Legal vehicles only, with Seasonal Designation	03-15-1102	155F	Roads open to highway legal vehicles only, with Seasonal Designation	Seasonal Designation	01-09-0111
78	Seasonal Designation	Legal vehicles only, with Seasonal Designation	03-15-1102	156D	Roads open to highway legal vehicles only, with Seasonal Designation	Seasonal Designation	03-15-0109
24	Roads open to highway legal vehicles only, with Seasonal Designation	Seasonal Designation	03-15-0216	156C	Roads open to highway legal vehicles only, with Seasonal Designation	Seasonal Designation	03-09-0111
25A	Roads open to highway legal vehicles only, with Seasonal Designation	Seasonal Designation	09-12-0102	164A	Roads open to highway legal vehicles only, with Seasonal Designation	Seasonal Designation	09-12-0117
26-18	Roads open to highway legal vehicles only, with Seasonal Designation	Seasonal Designation	03-02-0111	164C	Roads open to highway legal vehicles only, with Seasonal Designation	Seasonal Designation	09-12-0117
26C	Roads open to highway legal vehicles only, with Seasonal Designation	Seasonal Designation	09-12-0111	164B	Roads open to highway legal vehicles only, with Seasonal Designation	Seasonal Designation	09-12-0118
26-19	Roads open to highway legal vehicles only, with Seasonal Designation	Seasonal Designation	09-12-0111	164C	Roads open to highway legal vehicles only, with Seasonal Designation	Seasonal Designation	09-12-0118
26-20	Roads open to highway legal vehicles only, with Seasonal Designation	Seasonal Designation	09-12-0111	164C	Roads open to highway legal vehicles only, with Seasonal Designation	Seasonal Designation	09-12-0118
26-21	Roads open to highway legal vehicles only, with Seasonal Designation	Seasonal Designation	09-12-0111	164C	Roads open to highway legal vehicles only, with Seasonal Designation	Seasonal Designation	09-12-0118
26-22	Roads open to highway legal vehicles only, with Seasonal Designation	Seasonal Designation	09-12-0111	164C	Roads open to highway legal vehicles only, with Seasonal Designation	Seasonal Designation	09-12-0118
26-23	Roads open to highway legal vehicles only, with Seasonal Designation	Seasonal Designation	09-12-0111	164C	Roads open to highway legal vehicles only, with Seasonal Designation	Seasonal Designation	09-12-0118
26-24	Roads open to highway legal vehicles only, with Seasonal Designation	Seasonal Designation	09-12-0111	164C	Roads open to highway legal vehicles only, with Seasonal Designation	Seasonal Designation	09-12-0118
26-25	Roads open to highway legal vehicles only, with Seasonal Designation	Seasonal Designation	09-12-0111	164C	Roads open to highway legal vehicles only, with Seasonal Designation	Seasonal Designation	09-12-0118
26-26	Roads open to highway legal vehicles only, with Seasonal Designation	Seasonal Designation	09-12-0111	164C	Roads open to highway legal vehicles only, with Seasonal Designation	Seasonal Designation	09-12-0118
26-27	Roads open to highway legal vehicles only, with Seasonal Designation	Seasonal Designation	09-12-0111	164C	Roads open to highway legal vehicles only, with Seasonal Designation	Seasonal Designation	09-12-0118
26-28	Roads open to highway legal vehicles only, with Seasonal Designation	Seasonal Designation	09-12-0111	164C	Roads open to highway legal vehicles only, with Seasonal Designation	Seasonal Designation	09-12-0118
26-29	Roads open to highway legal vehicles only, with Seasonal Designation	Seasonal Designation	09-12-0111	164C	Roads open to highway legal vehicles only, with Seasonal Designation	Seasonal Designation	09-12-0118
26-30	Roads open to highway legal vehicles only, with Seasonal Designation	Seasonal Designation	09-12-0111	164C	Roads open to highway legal vehicles only, with Seasonal Designation	Seasonal Designation	09-12-0118
26-31	Roads open to highway legal vehicles only, with Seasonal Designation	Seasonal Designation	09-12-0111	164C	Roads open to highway legal vehicles only, with Seasonal Designation	Seasonal Designation	09-12-0118
26-32	Roads open to highway legal vehicles only, with Seasonal Designation	Seasonal Designation	09-12-0111	164C	Roads open to highway legal vehicles only, with Seasonal Designation	Seasonal Designation	09-12-0118
26-33	Roads open to highway legal vehicles only, with Seasonal Designation	Seasonal Designation	09-12-0111	164C	Roads open to highway legal vehicles only, with Seasonal Designation	Seasonal Designation	09-12-0118
26-34	Roads open to highway legal vehicles only, with Seasonal Designation	Seasonal Designation	09-12-0111	164C	Roads open to highway legal vehicles only, with Seasonal Designation	Seasonal Designation	09-12-0118
26-35	Roads open to highway legal vehicles only, with Seasonal Designation	Seasonal Designation	09-12-0111	164C	Roads open to highway legal vehicles only, with Seasonal Designation	Seasonal Designation	09-12-0118
26-36	Roads open to highway legal vehicles only, with Seasonal Designation	Seasonal Designation	09-12-0111	164C	Roads open to highway legal vehicles only, with Seasonal Designation	Seasonal Designation	09-12-0118
26-37	Roads open to highway legal vehicles only, with Seasonal Designation	Seasonal Designation	09-12-0111	164C	Roads open to highway legal vehicles only, with Seasonal Designation	Seasonal Designation	09-12-0118
26-38	Roads open to highway legal vehicles only, with Seasonal Designation	Seasonal Designation	09-12-0111	164C	Roads open to highway legal vehicles only, with Seasonal Designation	Seasonal Designation	09-12-0118
26-39	Roads open to highway legal vehicles only, with Seasonal Designation	Seasonal Designation	09-12-0111	164C	Roads open to highway legal vehicles only, with Seasonal Designation	Seasonal Designation	09-12-0118
26-40	Roads open to highway legal vehicles only, with Seasonal Designation	Seasonal Designation	09-12-0111	164C	Roads open to highway legal vehicles only, with Seasonal Designation	Seasonal Designation	09-12-0118
26-41	Roads open to highway legal vehicles only, with Seasonal Designation	Seasonal Designation	09-12-0111	164C	Roads open to highway legal vehicles only, with Seasonal Designation	Seasonal Designation	09-12-0118
26-42	Roads open to highway legal vehicles only, with Seasonal Designation	Seasonal Designation	09-12-0111	164C	Roads open to highway legal vehicles only, with Seasonal Designation	Seasonal Designation	09-12-0118
26-43	Roads open to highway legal vehicles only, with Seasonal Designation	Seasonal Designation	09-12-0111	164C	Roads open to highway legal vehicles only, with Seasonal Designation	Seasonal Designation	09-12-0118
26-44	Roads open to highway legal vehicles only, with Seasonal Designation	Seasonal Designation	09-12-0111	164C	Roads open to highway legal vehicles only, with Seasonal Designation	Seasonal Designation	09-12-0118
26-45	Roads open to highway legal vehicles only, with Seasonal Designation	Seasonal Designation	09-12-0111	164C	Roads open to highway legal vehicles only, with Seasonal Designation	Seasonal Designation	09-12-0118
26-46	Roads open to highway legal vehicles only, with Seasonal Designation	Seasonal Designation	09-12-0111	164C	Roads open to highway legal vehicles only, with Seasonal Designation	Seasonal Designation	09-12-0118
26-47	Roads open to highway legal vehicles only, with Seasonal Designation	Seasonal Designation	09-12-0111	164C	Roads open to highway legal vehicles only, with Seasonal Designation	Seasonal Designation	09-12-0118
26-48	Roads open to highway legal vehicles only, with Seasonal Designation	Seasonal Designation	09-12-0111	164C	Roads open to highway legal vehicles only, with Seasonal Designation	Seasonal Designation	09-12-0118
26-49	Roads open to highway legal vehicles only, with Seasonal Designation	Seasonal Designation	09-12-0111	164C	Roads open to highway legal vehicles only, with Seasonal Designation	Seasonal Designation	09-12-0118
26-50	Roads open to highway legal vehicles only, with Seasonal Designation	Seasonal Designation	09-12-0111	164C	Roads open to highway legal vehicles only, with Seasonal Designation	Seasonal Designation	09-12-0118
26-51	Roads open to highway legal vehicles only, with Seasonal Designation	Seasonal Designation	09-12-0111	164C	Roads open to highway legal vehicles only, with Seasonal Designation	Seasonal Designation	09-12-0118
26-52	Roads open to highway legal vehicles only, with Seasonal Designation	Seasonal Designation	09-12-0111	164C	Roads open to highway legal vehicles only, with Seasonal Designation	Seasonal Designation	09-12-0118
26-53	Roads open to highway legal vehicles only, with Seasonal Designation	Seasonal Designation	09-12-0111	164C	Roads open to highway legal vehicles only, with Seasonal Designation	Seasonal Designation	09-12-0118
26-54	Roads open to highway legal vehicles only, with Seasonal Designation	Seasonal Designation	09-12-0111	164C	Roads open to highway legal vehicles only, with Seasonal Designation	Seasonal Designation	09-12-0118
26-55	Roads open to highway legal vehicles only, with Seasonal Designation	Seasonal Designation	09-12-0111	164C	Roads open to highway legal vehicles only, with Seasonal Designation	Seasonal Designation	09-12-0118
26-56	Roads open to highway legal vehicles only, with Seasonal Designation	Seasonal Designation	09-12-0111	164C	Roads open to highway legal vehicles only, with Seasonal Designation	Seasonal Designation	09-12-0118
26-57	Roads open to highway legal vehicles only, with Seasonal Designation	Seasonal Designation	09-12-0111	164C	Roads open to highway legal vehicles only, with Seasonal Designation	Seasonal Designation	09-12-0118
26-58	Roads open to highway legal vehicles only, with Seasonal Designation	Seasonal Designation	09-12-0111	164C	Roads open to highway legal vehicles only, with Seasonal Designation	Seasonal Designation	09-12-0118
26-59	Roads open to highway legal vehicles only, with Seasonal Designation	Seasonal Designation	09-12-0111	164C	Roads open to highway legal vehicles only, with Seasonal Designation	Seasonal Designation	09-12-0118
26-60	Roads open to highway legal vehicles only, with Seasonal Designation	Seasonal Designation	09-12-0111	164C	Roads open to highway legal vehicles only, with Seasonal Designation	Seasonal Designation	09-12-0118
26-61	Roads open to highway legal vehicles only, with Seasonal Designation	Seasonal Designation	09-12-0111	164C	Roads open to highway legal vehicles only, with Seasonal Designation	Seasonal Designation	09-12-0118
26-62	Roads open to highway legal vehicles only, with Seasonal Designation	Seasonal Designation	09-12-0111	164C	Roads open to highway legal vehicles only, with Seasonal Designation	Seasonal Designation	09-12-0118
26-63	Roads open to highway legal vehicles only, with Seasonal Designation	Seasonal Designation	09-12-0111	164C	Roads open to highway legal vehicles only, with Seasonal Designation	Seasonal Designation	09-12-0118
26-64	Roads open to highway legal vehicles only, with Seasonal Designation	Seasonal Designation	09-12-0111	164C	Roads open to highway legal vehicles only, with Seasonal Designation	Seasonal Designation	09-12-0118
26-65	Roads open to highway legal vehicles only, with Seasonal Designation	Seasonal Designation	09-12-0111	164C	Roads open to highway legal vehicles only, with Seasonal Designation	Seasonal Designation	09-12-0118
26-66	Roads open to highway legal vehicles only, with Seasonal Designation	Seasonal Designation	09-12-0111	164C	Roads open to highway legal vehicles only, with Seasonal Designation	Seasonal Designation	09-12-0118
26-67	Roads open to highway legal vehicles only, with Seasonal Designation	Seasonal Designation	09-12-0111	164C	Roads open to highway legal vehicles only, with Seasonal Designation	Seasonal Designation	09-12-0118
26-68	Roads open to highway legal vehicles only, with Seasonal Designation	Seasonal Designation	09-12-0111	164C	Roads open to highway legal vehicles only, with Seasonal Designation	Seasonal Designation	09-12-0118
26-69	Roads open to highway legal vehicles only, with Seasonal Designation	Seasonal Designation	09-12-0111	164C	Roads open to highway legal vehicles only, with Seasonal Designation	Seasonal Designation	09-12-0118
26-70	Roads open to highway legal vehicles only, with Seasonal Designation	Seasonal Designation	09-12-0111	164C	Roads open to highway legal vehicles only, with Seasonal Designation	Seasonal Designation	09-12-0118
26-71	Roads open to highway legal vehicles only, with Seasonal Designation	Seasonal Designation	09-12-0111	164C	Roads open to highway legal vehicles only, with Seasonal Designation	Seasonal Designation	09-12-0118
26-72	Roads open to highway legal vehicles only, with Seasonal Designation	Seasonal Designation	09-12-0111	164C	Roads open to highway legal vehicles only, with Seasonal Designation	Seasonal Designation	09-12-0118
26-73	Roads open to highway legal vehicles only, with Seasonal Designation	Seasonal Designation	09-12-0111	164C	Roads open to highway legal vehicles only, with Seasonal Designation	Seasonal Designation	09-12-0118
26-74	Roads open to highway legal vehicles only, with Seasonal Designation	Seasonal Designation	09-12-0111	164C	Roads open to highway legal vehicles only, with Seasonal Designation	Seasonal Designation	09-12-0118
26-75	Roads open to highway legal vehicles only, with Seasonal Designation	Seasonal Designation	09-12-0111	164C	Roads open to highway legal vehicles only, with Seasonal Designation	Seasonal Designation	09-12-0118
26-76	Roads open to highway legal vehicles only, with Seasonal Designation	Seasonal Designation	09-12-0111	164C	Roads open to highway legal vehicles only, with Seasonal Designation	Seasonal Designation	09-12-0118
26-77	Roads open to highway legal vehicles only, with Seasonal Designation	Seasonal Designation	09-12-0111	164C	Roads open to highway legal vehicles only, with Seasonal Designation	Seasonal Designation	09-12-0118
26-78	Roads open to highway legal vehicles only, with Seasonal Designation	Seasonal Designation	09-12-0111	164C	Roads open to highway legal vehicles only, with Seasonal Designation	Seasonal Designation	09-12-0118
26-79	Roads open to highway legal vehicles only, with Seasonal Designation	Seasonal Designation	09-12-0111	164C	Roads open to highway legal vehicles only, with Seasonal Designation	Seasonal Designation	09-12-0118
26-80	Roads open to highway legal vehicles only, with Seasonal Designation	Seasonal Designation	09-12-0111	164C	Roads open to highway legal vehicles only, with Seasonal Designation	Seasonal Designation	09-12-0118
26-81	Roads open to highway legal vehicles only, with Seasonal Designation	Seasonal Designation	09-12-0111	164C	Roads open to highway legal vehicles only, with Seasonal Designation	Seasonal Designation	09-12-0118
26-82	Roads open to highway legal vehicles only, with Seasonal Designation	Seasonal Designation	09-12-0111	164C	Roads open to highway legal vehicles only, with Seasonal Designation	Seasonal Designation	09-12-0118