

CHAPTER 2 – USAF-STYLE UNIFORMS (SENIOR MEMBERS AND CADETS)

2-1. General Information. This chapter prescribes men's and women's service, dress, battle dress uniform, flight suit, sweaters, outer garments, caps, and appearance. Uniforms must be clean, neat and correct in design and specifications, fitted properly, pressed and in good condition (that is not frayed, worn out, torn, faded, patched, and so forth). Uniform items are to be kept zipped, snapped, or buttoned. Shoes are to be shined and in good repair. NOTE: All ribbons, badges, and devices worn by senior members must fall below the top notch of the collar on the service coat or the bottom tip of the collar of shirts/blouses worn as outer garments. See Figures 2-1 through 2-25 for examples of the proper wear of the various AF-style uniforms. See Tables 2-1 and 2-3 for Men's Service Dress, Dress, and BDU Uniforms. See Tables 2-2 and 2-3 for Women's Service Dress, Dress and BDU Uniforms. See Table 2-4 for Flight Suit. See Table 2-5 for Clothing and Accessory Standards.

a. Service uniforms include the service dress uniform, long-sleeve light blue blouse/shirt, and short-sleeve light blue blouse/shirt. These uniforms are authorized for year-round wear. Cadets may continue to wear obsolete uniform items for a 2-year period following the phase-out date except when participating in national activities where only currently authorized items will be worn. The old-style Air Force service uniform for cadets will not be covered by this phase out rule and will continue to be authorized indefinitely. When old and new items are worn, the coat and slacks/skirt/trousers will be of a matching material (same shade, weave, and weight). Blue uniform items except shirts/blouses should be dry cleaned unless label specifies differently.

b. Only senior member officers and NCOs are authorized the blue mess dress uniform for year-round wear. Only cadet members may wear the blue semiformal uniform.

c. The battle dress uniform (camouflage fatigue uniform) is worn when it is impractical or inappropriate to wear the service uniforms.

d. Flight Crew members wearing the green Air Force flight suit may make only essential stops en route to and from the duty performance site. If a stop is essential, members must meet the proper standards of neatness, cleanliness, and military image.

e. Sweaters, men's and women's outer garments, and headgear are also covered. Outer garments are items worn outdoors and removed in an office environment. Members should use good judgment in choosing appropriate garments for wear based on weather conditions and duties.



NOTES:

1. Grade Insignia: Senior member officers wear embroidered grade insignia on gray epaulet sleeve. Senior member NCOs and Airmen wear 4-inch cloth chevrons halfway between shoulder seam and elbow bent at 90-degree angle.
2. Lapel Insignia: Highly polished U.S. insignia worn by senior member officers; highly polished CAP insignia worn by senior member NCOs and Airmen and senior members without grade. Insignia is placed halfway up the seam, resting on but not over it. Bottom of insignia is parallel with the ground.
3. Nameplate: The AF highly polished nameplate is worn centered on the right breast with the bottom edge parallel to bottom row of ribbons.
4. CAP Aviation Badges and Specialty Insignia: Highly polished, worn centered 1/2 inch above ribbons. All ribbons and devices must fall below the top edge of the notched collar.
5. Ribbons: (required) Worn centered above left breast welt, resting on but not over top edge with 3 or 4 in a row. Wear all or some. All ribbons and devices must fall below the top notch of the collar.
6. Military Aviation Badges: Highly polished, worn 1/2 inch above ribbons on left breast and 1/2 inch below CAP aviation badge.
7. CAP Specialty Badges: Worn centered 1 1/2 inches below top of welt pocket and/or on right side centered between arm seam 1/2-inch above nameplate, only one specialty badge may be worn in each location.
8. CAP Command Badge: Worn centered on right breast, 1/2 inch above nameplate.
9. A maximum of four devices may be worn on this uniform with a maximum of two devices worn above the ribbons.

Figure 2-1. Men's Service Dress Uniform (Senior Members)



Old-style Service Dress



New-style Service Dress

NOTES:

1. Grade Insignia: Cadet officers wear regular size metal grade insignia on shoulder boards; cadet NCOs and Airmen wear a metal chevron on right lapel.
2. CAP Lapel Insignia: Cadet officers and cadets with no grade wear lapel insignia on both lapels halfway up the seam, resting on but not over it. Cadet NCOs and Airmen wear it on the left lapel only with the bottom of the insignia parallel to the ground.
3. CAP Aviation Badges and Specialty Insignia: Worn centered 1/2 inch above ribbons.
4. Ribbons: (required) Worn centered above left breast pocket/welt, resting on but not over top edge with 3 or 4 in a row.
5. Nameplate: Blue, three-line, rests on but not over top edge of right pocket, between left and right edges of pocket on old style coat. Centered on right breast parallel to bottom row of ribbons on new style.
6. CAP Specialty Badges: New-style: Worn centered 1 1/2 inches below top of welt pocket and/or on right side centered between arm seam and lapel 1/2-inch above nameplate, only one specialty badge maybe worn in each location. Old-style: Worn on lower portion of left pocket between left and right edges and bottom of flap and pocket, and/or on right pocket between left and right edges and bottom of flap and pocket. Only one badge maybe worn in each location.
7. A maximum of 2 devices may be worn above the ribbons.
8. Wing/Region/National Shoulder Patch: Worn 1/2 inch below shoulder seam on left sleeve centered on epaulet (Old-style Service Dress only).

**Figure 2-2. Men's Service Dress Uniform (Cadets)
(Cadets are authorized to wear both the old and new style service coats)**

**NOTES:**

1. Grade Insignia: Senior member officers wear embroidered grade insignia on gray epaulet sleeve. Senior member NCOs and Airmen wear 3-inch or 3 1/2-inch cloth chevrons on the sleeve or embroidered gray epaulet sleeve. Senior members without grade and NCOs and Airmen wearing chevrons on the sleeve wear the CAP lapel/collar insignia on both sides of collar.
2. CAP Aviation Badges and Specialty Insignia: Highly polished, worn 1/2 inch above ribbons or left pocket if ribbons are not worn.
3. Ribbons: Worn resting on but not over top edge of left pocket and centered between the left and right edges with 3 in a row. Wear all, some or none. All ribbons and devices must fall below the bottom tip of the collar when worn as an outer garment.
4. Nameplate: Gray, three-line rests on but not over top edge of right pocket, centered between left and right edges.
5. Military Aviation Badges: Highly polished, worn centered 1/2 inch above the ribbons, below the CAP aviation badge.
6. CAP Specialty Badges: Worn centered below the pocket flap on the left breast pocket and/or on right breast pocket between left and right edges and bottom of flap and pocket, only one specialty badge maybe worn in each location.
7. CAP Command Badge: Worn centered on right breast, 1/2 inch above nameplate.
8. A maximum of 2 devices may be worn above the ribbons.
9. Wing/Region/National Shoulder Patch: Worn 1/2 inch below shoulder seam on left sleeve centered on epaulet.
10. Tie Tack or Bar: Center tie tack or tie bar (CAP crest, Air Force coat of arms, Wing and Star/Hap Arnold design or grade insignia) between bottom edge of knot and bottom (tip) of tie.
11. Cuff Links (optional): If worn, must be plain silver design or with CAP crest, AF coat of arms, or Wing and Star/Hap Arnold design.

Figure 2-3. Men's Long-sleeve Shirt (Senior Members)



Cadet Officers

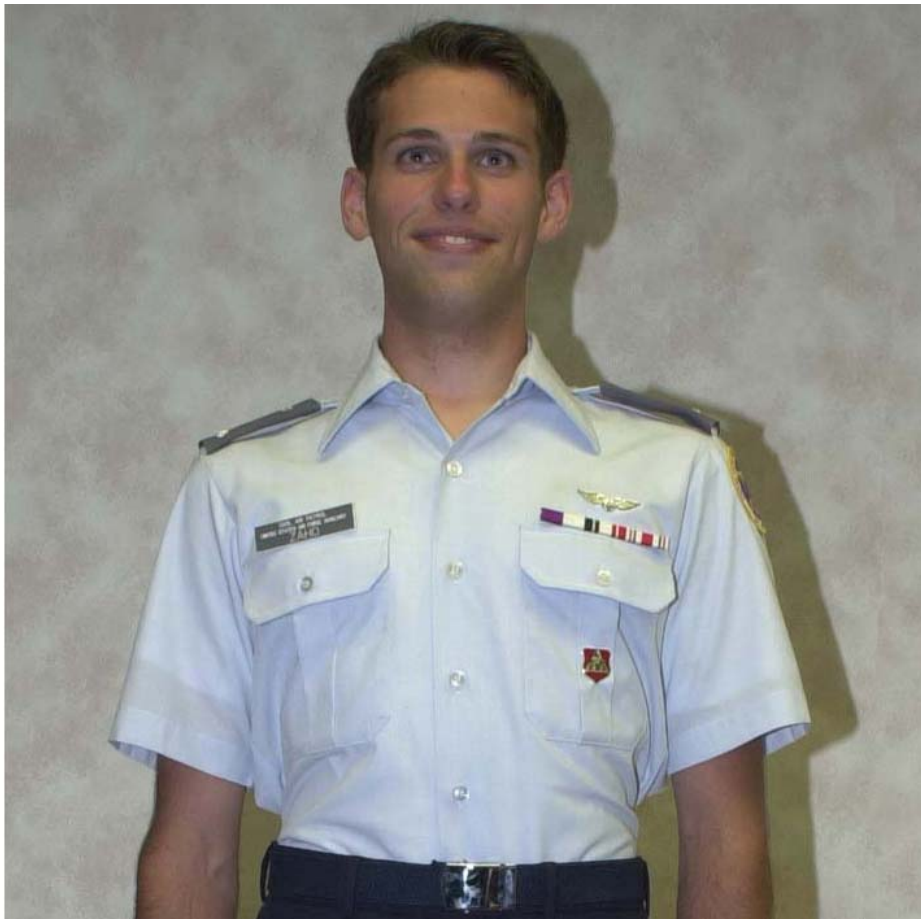


Cadet NCOs and Airmen

NOTES:

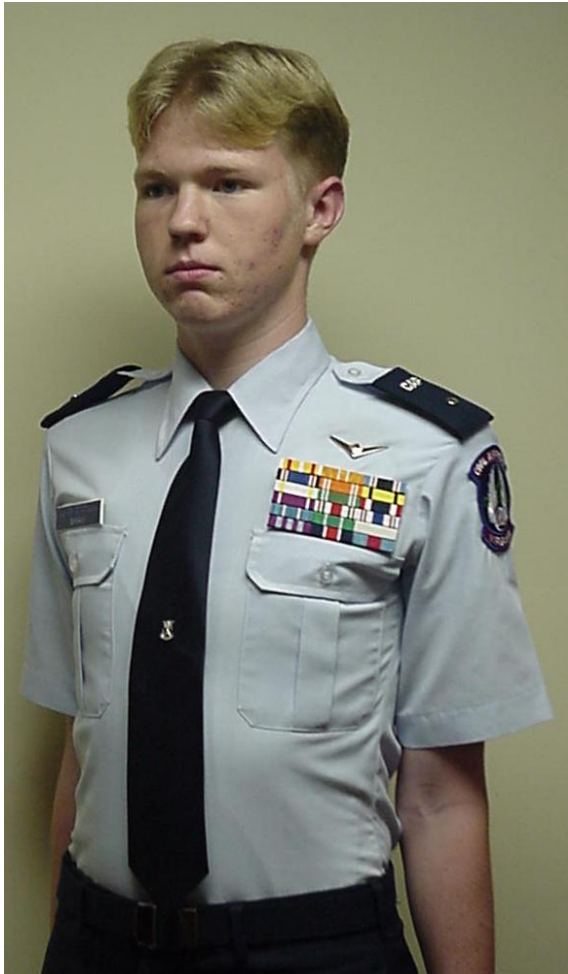
1. Grade Insignia: Cadet officers wear miniature size metal grade insignia on blue epaulet sleeve. Cadet NCOs and Airmen wear regular size metal chevron on right side of collar.
2. CAP Lapel/Collar Insignia: Cadet NCOs and Airmen wear highly polished, metal device worn on left side of the collar. Cadet members without grade wear this insignia on both sides of the collar.
3. CAP Aviation Badges and Specialty Insignia: Highly polished, worn 1/2 inch above ribbons or left pocket if ribbons are not worn.
4. Ribbons: Worn resting on but not over top edge of left pocket and centered between the left and right edges with 3 in a row. Wear all or none.
5. Nameplate: Blue, three-line, rests on but not over top edge of right pocket, centered between left and right edges.
6. CAP Specialty Badges: Worn centered below the pocket flap on the left breast pocket and/or on right breast pocket centered between left and right edges and bottom of flap and pocket. Only one specialty badge may be worn in each location.
7. Wing/Region/National Shoulder Patch: Worn 1/2 inch below shoulder seam on left sleeve centered on epaulet.
8. Tie Tack or Bar: Center tie tack or tie bar (silver metallic with CAP crest, Air Force coat of arms, Wing and Star/Hap Arnold design) between bottom edge of knot and bottom (tip) of tie.
9. Cuff Links (optional): If worn, must be plain silver design or with CAP crest, AF coat of arms, or Wing and Star/Hap Arnold design.

Figure 2-4. Men's Long-sleeve Shirt (Cadets)

**NOTES:**

1. Grade Insignia: Senior member officers wear embroidered grade insignia on gray epaulet sleeve. Senior member NCOs and Airmen wear the 3-inch or 3 1/2-inch cloth chevrons on the sleeve or embroidered gray epaulet sleeve. Senior members without grade and NCOs and Airmen wearing chevrons on the sleeve wear the CAP lapel/collar insignia on both sides of collar.
2. CAP Aviation Badges and Specialty Insignia: Highly polished, worn 1/2 inch above ribbons or left pocket if ribbons are not worn.
3. Ribbons: Worn resting on but not over top edge of left pocket and centered between the left and right edges with 3 in a row. Wear all, some or none. All ribbons and devices must fall below the bottom tip of the collar when worn as an outer garment.
4. Nameplate: Gray, three-line, rests on but not over top edge of right pocket, centered between left and right edges.
5. Military Aviation Badges: Highly polished, worn centered 1/2 inch above the ribbons, below the CAP aviation badge.
6. CAP Specialty Badges: Worn centered below the pocket flap on the left breast pocket and/or on right pocket centered between left and right edges and bottom of flap and pocket. Only one specialty badge may be worn in each location.
7. CAP Command Badge: Worn centered on right breast, 1/2 inch above nameplate.
8. Wing/Region/National Shoulder Patch: Worn 1/2 inch below shoulder seam on left sleeve centered on epaulet.
9. Tie Tack or Bar: Center tie tack or tie bar (CAP crest, Air Force coat of arms, Wing and Star/Hap Arnold design or grade insignia) between bottom edge of knot and bottom (tip) of tie, if tie is worn.
10. A maximum of 2 devices may be worn above the ribbons.

Figure 2-5. Men's Short-sleeve Shirt (Senior Members)



Cadet Officer



Cadet NCOs and Airmen

NOTES:

1. **Grade Insignia:** Cadet officers wear miniature size metal grade insignia on blue epaulet sleeve. Cadet NCOs and Airmen wear regular size metal chevron on right side of collar.
2. **CAP Lapel/Collar Insignia:** Cadet NCOs and Airmen wear highly polished, metal device worn on left side of the collar. Cadet members without grade wear this insignia on both sides of the collar.
3. **CAP Aviation Badge and Specialty Insignia:** Highly polished, worn 1/2 inch above ribbons or pocket if ribbons are not worn.
4. **Ribbons:** Worn resting on but not over top edge of left pocket and centered between the left and right edges with 3 in a row. Wear all or none.
5. **Nameplate:** Blue, three-line, rests on but not over top edge of right pocket, centered between left and right edges.
6. **CAP Specialty Badges:** Worn centered below the pocket flap on the left breast pocket and/or on right pocket centered between left and right edges and bottom of lap and pocket. Only one specialty badge may be worn in each location.
7. **Wing/Region/National Shoulder Patch:** Worn 1/2 inch below shoulder seam on left sleeve centered on epaulet.
8. **Tie Tack or Bar:** Center tie tack or tie bar (silver metallic with CAP crest, Air Force coat of arms or Wing and Star/Hap Arnold design) between bottom edge of knot and bottom (tip) of tie, if tie is worn.

Figure 2-6. Men's Short-sleeve Shirt (Cadets)



NOTES:

1. Grade Insignia: Officers wear blue, regular size shoulder boards with embroidered regular size grade insignia superimposed with CAP or AF wing and star button at peak of board and 1/2-inch dark blue, shade 1095, braid running the length of each side. Place shoulder board insignia as close as possible to shoulder seam. Button on shoulder board should match buttons on mess dress jacket. NCOs center 4-inch sleeve chevron halfway between shoulder seam and elbow bent at 90-degree angle.
2. CAP Aviation Badges and Specialty Insignia: Worn centered 1/2 inch above top row of medals or when no medals are authorized midway between shoulder and top button. May be highly polished metal or embroidered, regular or miniature, but all devices must match.
3. Medals: Center miniature medals between lapel and arm seam and midway between top shoulder seam and top button of jacket.
4. CAP Seal: Worn over middle button on the right side of jacket. May be enamel or bullion, but must match other badges and devices.
5. CAP Command Badge: Worn centered on right breast, parallel to badges on left side.
6. Cuff Links/Studs: Plain silver satin finish or Wing and Star/Hap Arnold design. Wear cuff links and studs as a set.

Figure 2-7. Men's Mess Dress Uniform (Senior Member Officers and NCOs Only)



Old-style Semiformal Uniform



New-style Semiformal Uniform

NOTE: The uniform is configured as stated in Figure 2-2 for cadet officers, NCOs and airmen. The new style uniform is worn with a plain white shirt and nameplate removed. On the old-style uniform a dark blue or black satin bow tie is worn with a plain white shirt and nameplate removed.

Figure 2-8. Men's Blue Semiformal Uniform (Cadets Only)



NOTES:

1. Grade Insignia: Senior member officers wear embroidered grade insignia on gray epaulet sleeve. Senior member NCOs and Airmen wear 3 1/2- or 4-inch cloth chevrons halfway between shoulder seams and elbow when bent at 90-degree angle.
2. Lapel Insignia: Highly polished U.S. insignia is worn by senior member officers. Highly polished CAP insignia is worn by senior member NCOs and Airmen and senior members without grade. Insignia is placed halfway up the seam, resting on but not over it. Bottom of insignia is parallel with the ground.
3. Nameplate: The AF highly polished nameplate is worn centered on the right breast with the bottom edge parallel to bottom row of ribbons.
4. CAP Aviation Badges and Specialty Insignia: Highly polished, worn centered 1/2 inch above ribbons. All ribbons and devices must fall below the top edge of the notched collar.
5. Ribbons: (required) Worn centered above left breast pocket, resting on but not over top edge of the welt pocket with 3 or 4 in a row. Wear all or some. All ribbons and devices must fall below the top notch of the collar.
6. Military Aviation Badges: Highly polished, worn 1/2 inch above ribbons on left breast and 1/2 inch below CAP aviation badge.
7. CAP Specialty Badges: Worn centered 1 1/2 inches below top of welt pocket and/or on right side centered between arm seam and lapel 1/2 inch above the nameplate. Only one specialty badge may be worn in each location.
8. CAP Command Badge: Worn centered on right breast, 1/2-inch above nameplate.
9. A maximum of two devices may be worn above the ribbons.

Figure 2-9. Women's Service Dress Uniform (Senior Members)



New-style Service Dress Uniform



Old-style Service Dress Uniform

NOTES:

1. Grade Insignia: Cadet officers wear regular size metal grade insignia on shoulder boards; cadet NCOs and Airmen wear a metal chevron on right lapel.
2. CAP Lapel Insignia: Cadet officers and cadets with no grade wear lapel insignia on both lapels halfway up the seam, resting on but not over it. Cadet NCOs and Airmen wear lapel insignia on the left lapel only.
3. CAP Aviation Badges and Specialty Insignia: Worn centered 1/2 inch above ribbons.
4. Ribbons: (required) Worn centered above left breast pocket/welt, resting on but not over top edge with 3 or 4 in a row.
5. Nameplate: Blue, three-line centered on right side between lapel and arm seam, 1 to 3 inches higher than top button (Old-style Service Dress). Worn centered on the right breast with the bottom edge parallel to bottom row of ribbons (New style Service Dress).
6. CAP Specialty Badges: New style - worn centered 1 1/2 inches below top of welt pocket and/or on right side centered between arm seam and lapel 1/2 inch above the nameplate. Only one specialty badge maybe worn in each location. Model Rocketry badge must be worn below the top of welt pocket on the left side. Old style – worn centered 1/2 inch above top row of ribbons on left breast or 1/2 inch above nameplate.
7. A maximum of 2 devices may be worn above the ribbons.
8. Wing/Region/National Shoulder Patch: Worn 1/2 inch below shoulder seam on left sleeve centered on epaulet (Old-style Service Dress only).

**Figure 2-10. Women's Service Dress Uniform (Cadets)
(Cadets are authorized to wear both old and new style uniforms)**

**Tuck-in Blouse****Overblouse****NOTES:**

1. Grade Insignia: Senior member officers wear embroidered grade insignia on gray epaulet sleeve. Senior member NCOs and Airmen wear 3-inch or 3 1/2-inch cloth chevrons on the sleeve or gray epaulet sleeve with embroidered grade insignia. Senior members without grade and NCOs wearing chevrons on the sleeve wear the CAP lapel/collar insignia on both sides of collar.
2. CAP Aviation Badges and Specialty Insignia: Highly polished, worn 1/2 inch above ribbons. When no ribbons are worn, center badge 1/2 inch above imaginary row of ribbons.
3. Ribbons: Worn centered on the left side between buttons and arm seam, even with to 1 1/2 inches higher or lower than the first exposed button with 3 in a row. Bottom of ribbons will be even with bottom of nameplate. Wear all, some or none. All ribbons and devices must fall below the bottom tip of the collar when worn as an outer garment.
4. Nameplate: Gray, three-line, centered on right side even with or up to 1 1/2 inches higher or lower than the first exposed button and parallel with ground.
5. Military Aviation Badges: Highly polished, worn centered 1/2 inch above the ribbons, below the CAP aviation badge.
6. CAP Specialty Badges: Worn centered 1/2 inch above ribbons and/or 1/2 inch above nameplate. Only one badge maybe worn in each location.
7. CAP Command Badge: Worn centered on right breast, 1/2 inch above nameplate.
8. A maximum of 2 devices may be worn above the ribbons.
9. Wing/Region/National Shoulder Patch: Worn 1/2 inch below shoulder seam on left sleeve centered on epaulet.
10. Cuff Links (optional): If worn, must be plain silver design or with CAP crest, AF coat of arms, or Wing and Star/Hap Arnold design.
11. Tab: Inverted-V tie tab, with self-fastening tails (with blouse without Velcro tabs under collar). Inverted-V tie tab attaches under collar (with blouse with Velcro tabs under collar).

Figure 2-11. Women's Long-sleeve Blouse (Senior Members)



Tuck-in Blouse



Overblouse

NOTES:

1. Grade Insignia: Cadet officers wear miniature size metal grade insignia on blue epaulet sleeve. Cadet NCOs and Airmen wear regular size metal chevron on the right collar
2. CAP Lapel/Collar Insignia: Cadet NCOs and Airmen wear highly polished, metal device on left side of collar. Cadets without grade wear this device on both sides of the collar.
3. CAP Aviation Badges and Specialty Insignia: Highly polished, worn 1/2 inch above ribbons. When no ribbons are worn, center badge parallel to nameplate.
4. Ribbons: Worn centered on the left side between buttons and arm seam, even with to 1 1/2 inches higher or lower than the first exposed button with 3 in a row. Bottom of ribbons will be even with bottom of nameplate. Wear all or none. All ribbons and devices must fall below the bottom tip of the collar when worn as an outer garment.
5. Nameplate: Blue, three-line, centered on right side even with or up to 1 1/2 inches higher or lower than the first exposed button, parallel with ground.
6. CAP Specialty Badges: Worn centered 1/2 inch above ribbons and/or 1/2 inch above nameplate. Only one specialty badge may be worn in each location.
7. A maximum of 2 devices may be worn above the ribbons.
8. Wing/Region/National Shoulder Patch: Worn 1/2 inch below shoulder seam on left sleeve centered on epaulet.
9. Cuff Links (optional): If worn, must be plain silver design or with CAP crest, AF coat of arms, or AF Wing and Star/Hap Arnold design.
10. Tab: Inverted-V tie tab, with self-fastening tails (with blouse without Velcro tabs under collar). Inverted-V tie tab attaches under collar (with blouse with Velcro tabs under collar).

Figure 2-12. Women's Long-sleeve Blouse (Cadets)

**Overblouse****Tuck-in Blouse****NOTES:**

1. Grade Insignia: Senior member officers wear embroidered grade insignia on gray epaulet sleeve. Senior member NCOs and Airmen wear 3-inch or 3 1/2-inch cloth chevrons on the sleeve or embroidered gray epaulet sleeve. Senior members without grade and NCOs wearing chevrons on the sleeve wear the CAP lapel/collar insignia on both sides of collar.
2. CAP Aviation Badges and Specialty Insignia: Highly polished, worn 1/2 inch above ribbons. When no ribbons are worn, center badge parallel to nameplate.
3. Ribbons: Worn centered on the left side between buttons and arm seam, even with to 1 1/2 inches higher or lower than the first exposed button with 3 in a row. Bottom of ribbons will be even with bottom of nameplate. Wear all, some or none. All ribbons and devices must fall below the bottom tip of the collar when worn as an outer garment.
4. Nameplate: Gray, three-line, centered on right side even with or up to 1 1/2 inches higher or lower than the first exposed button and parallel with ground.
5. Military Aviation Badges: Highly polished, worn centered 1/2 inch above the ribbons, below the CAP aviation badge.
6. CAP Specialty Badges: Worn centered 1/2 inch above ribbons and/or 1/2 inch above nameplate. Only one specialty badge maybe worn in each location.
7. CAP Command Badge: Worn centered on right breast, 1/2 inch above nameplate.
8. A maximum of 2 devices may be worn above the ribbons.
9. Wing/Region/National Shoulder Patch: Worn 1/2 inch below shoulder seam on left sleeve centered on epaulet.
10. Tab: Optional with short-sleeve blouse. Inverted-V tie tab, with self-fastening tails (with blouse without Velcro tabs under collar). Inverted-V tie tab attaches under collar (with blouse with Velcro tabs under collar) if tab is worn.

Figure 2-13. Women's Short-sleeve Blouse (Senior Members)

**Tuck-in Blouse****Overblouse****NOTES:**

1. Grade Insignia: Cadet officers wear miniature size metal grade insignia on blue epaulet sleeve. Cadet NCOs and Airmen wear regular size metal chevron on the right collar.
2. CAP Lapel/Collar Insignia: Cadet NCOs and Airmen wear highly polished, metal device on left side of collar. Cadets without grade wear this device on both sides of the collar.
3. CAP Aviation Badges and Specialty Insignia: Highly polished, worn 1/2 inch above ribbons. When no ribbons are worn, center badge parallel to nameplate.
4. Ribbons: Worn centered on the left side between buttons and arm seam, even with to 1 1/2 inches higher or lower than the first exposed button with 3 in a row. Bottom of ribbons will be even with bottom of nameplate. Wear all or none.
5. Nameplate: Blue, three-line, centered on right side even with or up to 1 1/2 inches higher or lower than the first exposed button, parallel with ground.
6. CAP Specialty Badges: Worn centered 1/2 inch above ribbons and/or 1/2 inch above nameplate. Only one specialty badge may be worn in each location.
7. A maximum of 2 devices may be worn above the ribbons.
8. Wing/Region/National Shoulder Patch: Worn 1/2 inch below shoulder seam on left sleeve centered on epaulet.
9. Tab: Optional with short-sleeve blouse. Inverted-V tie tab, with self-fastening tails (with blouse without Velcro tabs under collar). Inverted-V tie tab attaches under collar (with blouse with Velcro tabs under collar) if tab is worn.

Figure 2-14. Women's Short-sleeve Blouse (Cadets)

**NOTES:**

1. Grade Insignia: Officers wear blue, miniature size shoulder boards with embroidered regular size grade insignia and 1/2-inch dark blue, shade 1095, braid running the length of each side of shoulder board. Place shoulder board insignia as close as possible to shoulder seam. NCOs center 3-, 3 1/2-, or 4-inch sleeve chevron halfway between shoulder seam and elbow when bent at 90-degree angle.
2. CAP Aviation Badges and Specialty Insignia: Worn centered 1/2 inch above top row of medals or when no medals are authorized midway between shoulder and top button. May be highly polished metal or embroidered, regular or miniature, but all devices must match.
3. Medals: Center miniature medals between lapel and arm seam and midway between top shoulder seam and top button of jacket.
4. CAP Command Badge: Worn centered on right breast, parallel to medals.
5. CAP Seal: Worn over middle button on the right side of jacket. May be enamel or bullion but must match other devices.
6. Cuff Links/Studs. Plain silver satin finish or AF Wing and Star/Hap Arnold design. If worn, cuff links and studs must be a set.

Figure 2-15. Women's Mess Dress Uniform (Senior Member Officers and NCOs Only)



Old-style Semiformal Uniform



New-style Semiformal Uniform

NOTE: The uniform is configured as stated in Figure 2-10 for cadet officers, NCOs and airmen. The new style uniform is worn with a plain white shirt and nameplate removed. On the old style uniform a dark blue satin polyester inverted V tie-tab is worn with a plain white shirt and the nameplate removed.

Figure 2-16. Women's Blue Semiformal Uniform (Cadets Only)



Senior Member Officer



Cadet

NOTES:

1. Grade Insignia: Senior member officers wear embroidered grade insignia on ultramarine blue background on the collar. Senior member NCOs and Airmen wear the 3-, 3 1/2-, or 4-inch (women) or 4-inch (men) sleeve chevrons centered halfway between shoulder seam and elbow when bent at 90-degree angle on the sleeve. Cadet officers wear embroidered grade insignia on ultramarine blue background on the collar. Cadet NCOs and Airmen wear metal chevrons on collar. NOTE: Grade insignia was worn on the right collar only prior to 4 March 2005. Grade insignia is now required on both collars. Members have until 30 September 2005 to comply with this policy change.
2. CAP Lapel/Collar Insignia: Senior member NCOs and Airmen as well as senior members without grade wear this device on both sides of the collar. Cadet members without grade wear metal device on both sides of the collar. NOTE: Senior member and cadet officers as well as cadet NCOs and airman wore this device on the left collar prior to 4 March 2005. Wear of this device is no longer authorized for these individuals. Members have until 30 September 2005 to comply with this policy change.
3. "Civil Air Patrol" Tape: Ultramarine blue with white letters worn centered immediately above the left breast pocket. Tape will be the width of the pocket with raw ends folded under.
4. Cloth Name Tape: Ultramarine blue with white letters, worn centered immediately above the right breast pocket (only last name will be used). Tape will be the width of the pocket with raw ends folded under.
5. CAP Aviation Badges and Specialty Insignia: Embroidered, worn 1/2 inch above the cloth "Civil Air Patrol" tape worn over the left breast pocket. If both devices are worn, aviation badges should be 1/2 inch above specialty insignia.
6. Military Aviation Badges: Embroidered (subdued or white on blue), centered 1/2 inch below the CAP aviation badge above left breast pocket.
7. Wing/Region/National Shoulder Patch: Worn centered 1/2 inch below shoulder seam on left sleeve.
8. CAP Specialty Patches: Embroidered, worn on the lower portion of the left breast pocket between left and right edges and bottom of flap and pocket.
9. Unit Patches, if authorized, are worn on right breast pocket between left and right edges and bottom of flap and pocket. Other badges or patches are worn in accordance with Table 6-4.
10. Safety vest must be worn when participating in Ground Team activities.
11. All white on blue insignia will have 1/8-inch of blue showing at the widest and tallest point of the insignia, except the Civil Air Patrol and name tapes.

Figure 2-17. Men's and Women's Battle Dress Uniforms (Senior Members and Cadets)



Senior Member Officer



Cadet

NOTES:

1. Grade Insignia: Senior member and cadet officers wear embroidered grade insignia on ultramarine blue background on the epaulet. Senior member NCOs and Airmen wear the 3-, 3 1/2-, or 4-inch (women) or 4-inch (men) sleeve chevrons centered halfway between shoulder seam and elbow when bent at 90-degree angle on the sleeve. Cadet NCOs and Airmen wear metal chevrons on collar. NOTE: Grade insignia was worn on the right collar only prior to 4 March 2005. Grade insignia is now required on both collars. Members have until 30 September 2005 to comply with this policy change.
2. CAP Lapel/Collar Insignia: Senior member and cadet officers wear embroidered white on ultramarine blue background on epaulet. Cadet and senior members without grade as well as senior member NCOs and airmen wear device on both sides of the collar. NOTE: Cadet NCOs and Airmen wore this device on the left collar prior to 4 March 2005. It is no longer authorized. These members have until 30 September 2005 to comply with this policy change.
3. "Civil Air Patrol" Tape: Ultramarine blue with white letters worn centered immediately above the left breast pocket. Tape will not extend beyond either side of the pocket with raw ends folded under.
4. Cloth Name Tape: Ultramarine blue with white letters, worn centered immediately above the right breast pocket (only last name will be used). Tape will not extend beyond either side of the pocket with raw ends folded under.
5. CAP Aviation Badges and Specialty Insignia: Embroidered, worn 1/2 inch above the cloth "Civil Air Patrol" tape worn over the left breast pocket. If both devices are worn, aviation badges should be 1/2 inch above specialty insignia.
6. Military Aviation Badges: Embroidered (subdued or white on blue), centered 1/2 inch below the CAP aviation badge above left breast pocket
7. Wing/Region/National Shoulder Patch: Worn centered 1/2 inch below shoulder seam on left sleeve.
8. CAP Specialty Patches: Embroidered, worn on the lower portion of the left breast pocket between left and right edges and bottom of flap and pocket.
9. Unit Patches are worn on right breast pocket between left and right edges and bottom of flap and pocket. Other badges or patches are worn in accordance with Table 6-4.
10. Safety vest must be worn when participating in Ground Team activities.

Figure 2-18. Men's and Women's Field Jacket (Senior Members and Cadets)



Men's and Women's Flight Suit



Men's and Women's Flight Jacket

NOTES:

1. Grade Insignia: Senior members will wear regular size plastic encased grade insignia centered horizontally on top of each shoulder with bottom edge of insignia placed 1/2 inch from shoulder seam. General officers will center plastic grade insignia on shoulder. CAP cutouts will not be worn. Cadets do not wear insignia or cutouts.
2. Leather Name Patch: Will include name, grade, and aeronautical rating. Patch will be centered on left breast above pocket. Cloth name patch is not authorized. If no aeronautical rating, a title such as "Mission Scanner" may be used.
3. CAP Command Patch: A cloth CAP command patch will be worn on right breast directly opposite the leather name patch.
4. Shoulder Patch: A cloth American flag emblem with gold border, 2" x 3 1/2", on left shoulder, 1/2 inch below the shoulder seam.
5. Optional Breast Patch: Embroidered Emergency Services patch may be worn on the right breast or corresponding position.
6. Optional Shoulder Patch: Worn centered 1/2 inch below shoulder seam on right sleeve. Member may choose one of the authorized patches for the right shoulder, may be wing, region or National shoulder patch.
7. Cadet members do not wear grade insignia or CAP cutouts on the flight suit or jacket.
8. Scarf: an optional yellow and red command scarf is authorized for wear by senior member flight crews.
9. **The Air Force brown leather flight jacket is NOT authorized with this or any Air Force style uniform. The MA-1 flight jacket or the CWU-45/P or CWU-36/P Nomex flight jackets may be worn.**

**Figure 2-19. Men's and Women's Green Flight Suit and Green Flight Jacket
(Flight Crews Only)**

**NOTES:**

1. Grade Insignia: Senior member officers NCOs and Airman wear embroidered grade insignia on gray epaulet sleeve. Cadet officers wear metal grade insignia on blue shoulder mark insignia. Cadet NCOs and Airmen wear metal chevrons on right side of shirt collar.
2. CAP Lapel/Collar Insignia: Senior and cadet members without grade wear highly polished metal CAP cutouts on both sides of shirt collar. Cadet NCOs and airmen wear cutout on left side of collar.
3. Wing/Region/National Shoulder Patch: Worn 1/2 inch below the shoulder seam of the left sleeve centered on epaulet.
4. Tie/tab is optional when short-sleeve shirt/blouse is worn.

Figure 2-20. Men's and Women's Pullover Sweater

**NOTES:**

1. Grade Insignia: Senior member officers, NCOs and Airmen wear embroidered grade insignia on gray epaulet sleeve. Cadet officers wear metal grade insignia on blue shoulder mark insignia. Cadet NCOs and Airmen wear metal chevrons on right side of shirt collar.
2. CAP Lapel/Collar Insignia. Senior and cadet members without grade wear highly polished metal CAP cutouts on both sides of shirt collar. Cadet NCOs and airmen wear cutout on left side of collar.
3. Wing/Region/National Shoulder Patch: Worn 1/2 inch below the shoulder seam of the left sleeve centered on epaulet.
4. Tie/tab is optional when short-sleeve shirt/blouse is worn.

Figure 2-21. Men's and Women's Cardigan Sweater



Women's Lightweight Jacket



Men's Lightweight Jacket

NOTES:

1. Grade Insignia: Senior member officers wear embroidered grade insignia on gray epaulet sleeve. Senior member, NCOs and Airmen wear embroidered grade insignia on gray epaulet sleeve or 3-, 3 1/2-, or 4-inch (women) and 4-inch (men) cloth chevrons on sleeve. Cadet officers wear regular size metal grade insignia on epaulet. Cadet NCOs and airmen wear metal chevrons on right jacket collar.
2. CAP Lapel/Collar Insignia: Senior and cadet members without grade and senior member NCOs wearing chevrons on the sleeve wear highly polished metal CAP cutouts on both sides of jacket collar. Cadet NCOs and airmen wear cutouts on left side of collar.
3. Wing/Region/National Shoulder Patch: Worn 1/2 inch below the shoulder seam of the left sleeve centered on epaulet.

Figure 2-22. Men and Women's Lightweight Blue Jackets

**NOTES:**

1. Grade Insignia: Senior member officers wear embroidered grade insignia on gray epaulet sleeve. Senior member NCOs and Airmen wear embroidered grade insignia on gray epaulet sleeve or 3-, 3 1/2-, or 4-inch (women) and 4-inch (men) cloth chevrons on sleeve. Cadet officers wear regular size metal grade insignia on epaulet. Cadet NCOs and airmen wear metal chevrons on right coat collar.
2. CAP Lapel/Collar Insignia: Senior and cadet members without grade and senior member NCOs wearing chevrons on the sleeve wear highly polished metal CAP cutouts on both sides of coat collar. Cadet NCOs and airmen wear cutouts on left side of collar.
3. Wing/Region/National Shoulder Patch: Worn 1/2 inch below the shoulder seam of the left sleeve centered on epaulet.

Figure 2-23. Men's and Women's All-weather Coat

**NOTES:**

1. Grade Insignia: Senior member officers wear embroidered grade insignia on gray epaulet sleeve. Senior member NCOs and Airmen wear regular size metal grade insignia on right collar. Cadet officers wear regular size metal grade insignia on epaulet. Cadet NCOs and airmen wear metal chevrons on right coat collar.
2. CAP Lapel/Collar Insignia: Senior and cadet members without grade wear highly polished metal CAP cutouts on both sides of coat collar. Senior member and cadet NCOs and airmen wear cutouts on left side of collar.
3. Wing/Region/National Shoulder Patch: Worn 1/2 inch below the shoulder seam of the left sleeve.

Figure 2-24. Men's and Women's Raincoat

**NOTES:**

1. Grade Insignia: Senior member officers wear embroidered grade insignia on gray epaulet sleeve. Senior member NCOs and Airmen wear embroidered grade on gray epaulet sleeve or 3-, 3 1/2-, or 4-inch (women) and 4-inch (men) cloth chevrons on sleeve. Cadet officers wear regular size metal grade insignia on epaulet. Cadet NCOs and airmen wear metal chevrons on right coat collar.
2. CAP Lapel/Collar Insignia: Senior and cadet members without grade and senior member NCOs and Airmen wearing chevrons on the sleeve wear highly polished metal CAP cutouts on both sides of coat collar. Cadet NCOs and airmen wear cutouts on left side of collar.
3. Wing/Region/National Shoulder Patch: Worn 1/2 inch below the shoulder seam of the left sleeve centered on epaulet.

Figure 2-25. Men's and Women's Overcoat



**Senior Member Field Grade
Service Cap**



**Senior Member Officer Flight
Cap**



Senior Member BDU Cap



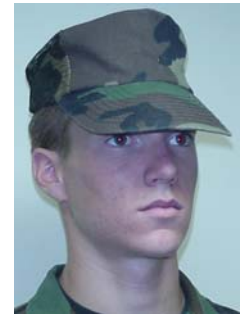
**Cadet Officer Service
Cap**



**Cadet Enlisted Flight
Cap**



**Cadet Officer BDU
Cap**

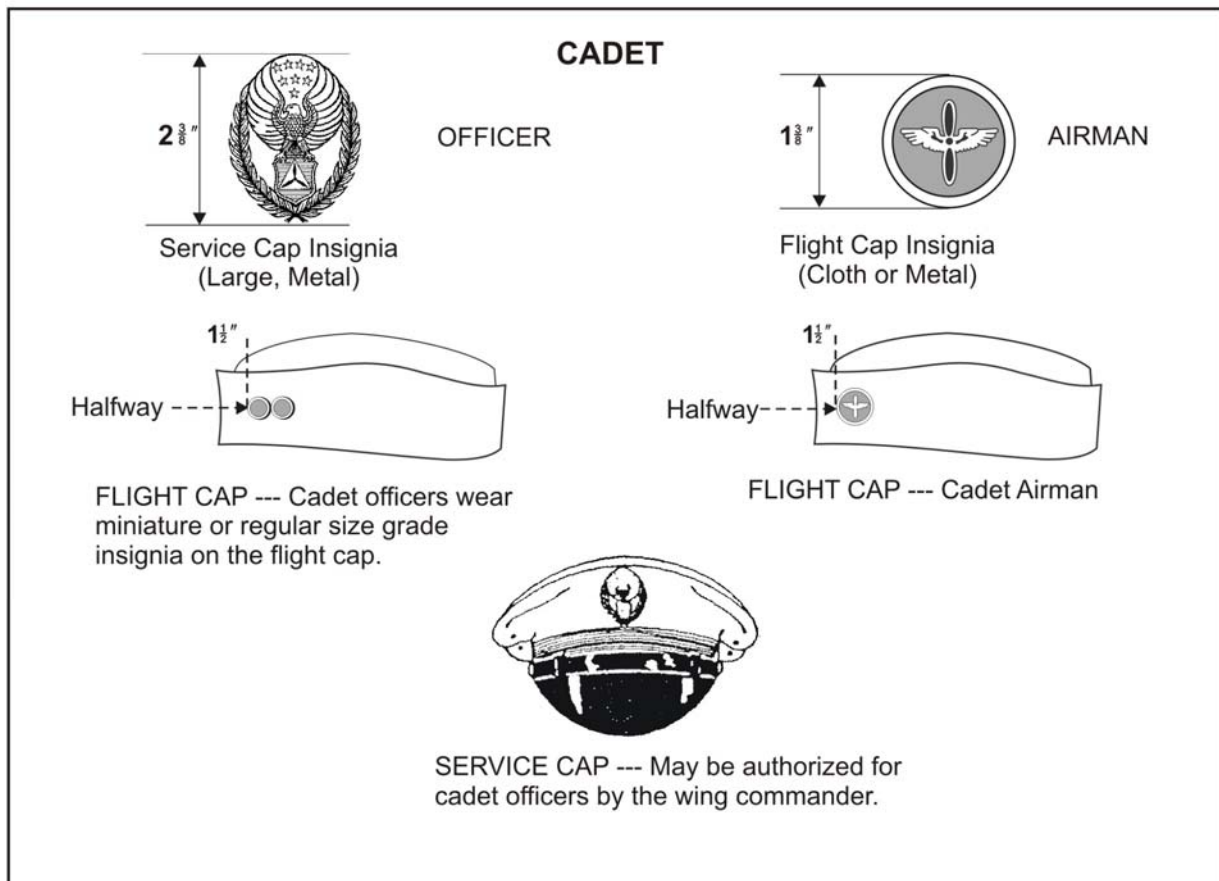
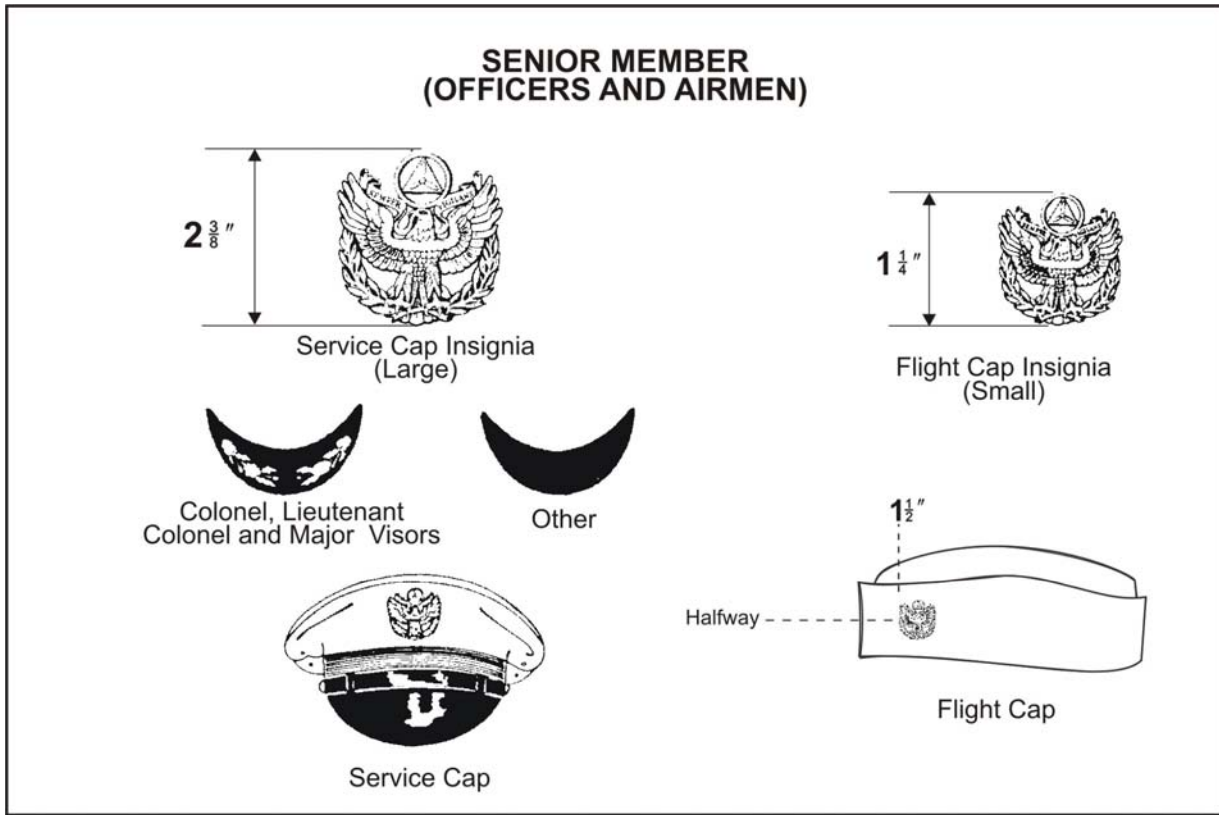


**Cadet Enlisted BDU
Baseball Cap**

NOTES:

1. Service Cap: Optional for senior members. May be authorized by wing commander for cadet officers. Normally worn with service dress uniform. Cadet NCOs and airmen will not wear the service cap (Exception see Chapter 3). Cap will not be crushed. Large senior member or cadet officer satin finish cap device (with post and screw back) is worn center front. General officers wear a cap with three sets of clouds and lightning on cap bill. Senior member Major through Colonel wear caps with two sets of clouds and lightning on the cap bill. All others wear caps with a plain bill.
2. Flight Cap: Senior members wear small double clutch back senior member cap device. Cadet NCOs and airmen wear the cadet enlisted double clutch back cap device. Cadet officers wear miniature or regular size metal grade insignia on the flight cap. Cap will not be crushed. Senior member officer flight cap has silver and blue braid. All others wear flight cap with solid blue braid.
3. BDU Cap: Either the USAF or Army style BDU cap or camouflage BDU baseball cap may be worn with the BDU uniform. Senior members, cadet NCOs, and airmen do not wear any type of insignia on the cap. Cadet officers wear the embroidered grade insignia centered 1/2 inch above the visor on the BDU cap. Cap will not be worn crushed or rolled. Marine style BDU cap is not authorized.
4. CAP Baseball Cap: May be worn with the utility uniforms if authorized by the unit commander. The color, material, unit designation, or silk screen organizational emblem or badge will be prescribed by the unit commander. Emblem or badge, if authorized, will be centered 1/2 inch above visor.

Figure 2-26. Men's Headgear



(Cap devices are antique satin finish that matches buttons of service coat)

Figure 2-27. Placement of Men's Cap Devices



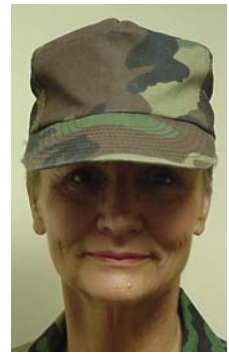
**Senior Member Field
Grade Service Cap**



**Senior Member
Officer Flight Cap**



**Senior Member BDU
Cap**



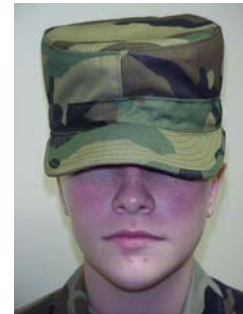
**Senior Member BDU
Baseball Cap**



Cadet Officer Service Cap



Cadet Officer Flight Cap

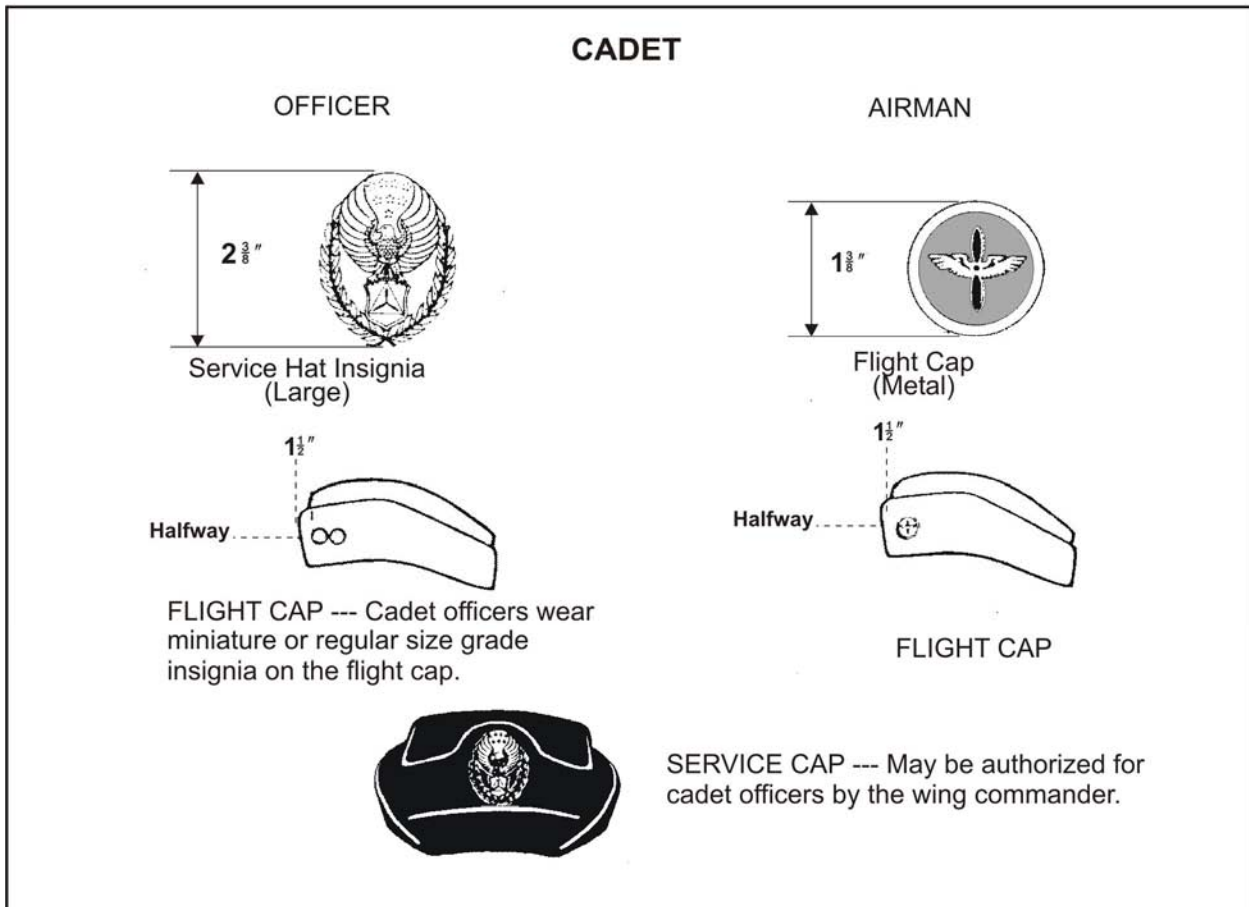
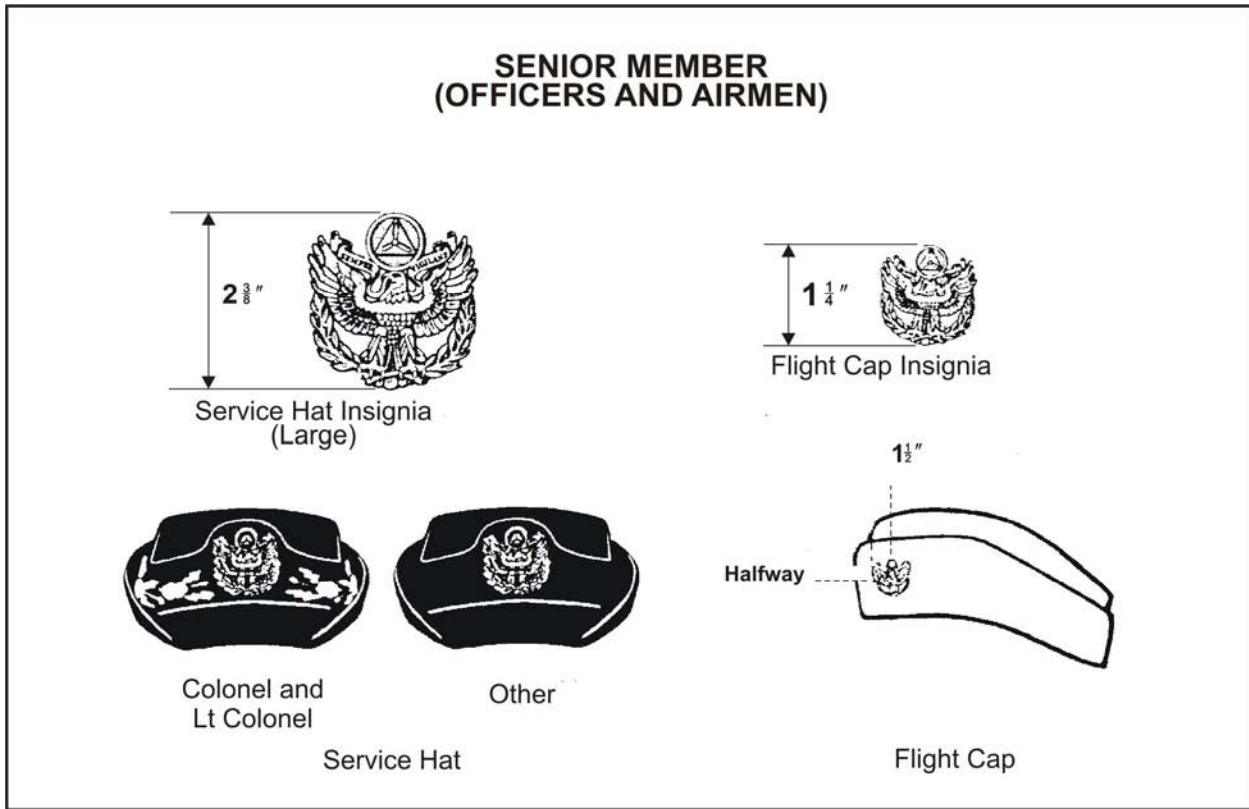


Cadet Enlisted BDU Cap

NOTES:

1. Service Cap: Optional for senior members. May be authorized by wing commanders for cadet officers. Cadet NCOs and airmen will not wear the service cap (Exception see Chapter 3). Cap will not be crushed. Large senior member or cadet officer satin finish cap device with double clutch back (without post and screw back) is worn center front. General officers wear a cap with three sets of clouds and lightning on cap band. Senior member Major through Colonel wear caps with two sets of clouds and lightning on the cap band. All others wear caps with a plain band.
2. Flight Cap: Senior members wear small double clutch back senior member cap device. Cadet NCOs and airmen wear the cadet enlisted double clutch back cap device. Cadet officers wear miniature or regular size metal grade insignia on the flight cap. Senior member officer flight cap has silver and blue braid. All others wear flight cap with solid blue braid.
3. BDU Cap: Either the USAF or Army style BDU cap or camouflage BDU baseball cap may be worn with the BDU uniform. Senior members, cadet NCOs, and airmen do not wear any type of insignia on the cap. Cadet officers wear the embroidered grade insignia centered 1/2 inch above the visor on the BDU cap. Cap will not be worn crushed or rolled. Marine style BDU cap is not authorized.
4. CAP Baseball Cap: May be worn with the utility uniforms if authorized by the unit commander. The color, material, unit designation, or silk screen organizational emblem or badge will be prescribed by the unit commander. Emblem or badge, if authorized, will be centered 1/2 inch above visor.

Figure 2-28. Women's Headgear



(Cap devices are antique satin finish that matches buttons of service coat)

Figure 2-29. Placement of Women's Cap Devices

L I N E	Item	New Service Dress	Old Service Dress (Cadets Only)	Long Sleeve Shirt	Short Sleeve Shirt	Mess Dress	Semiformal (Cadets Only)	Wear Instructions/Materials
1	Coat	X					X	Polyester and wool blend, serge weave; semi-drape, single-breasted with three buttons, one welt pocket on upper left side, and two lower pocket flaps. With arms hanging naturally, sleeves will end approximately 1/4 inch from the heel of the thumb. Ensure the bottom edge of coat extends 3 to 3 1/2 inches below the top of the thigh; sleeves and lapel will be roll-pressed. Senior member officers wear blue 1/2-inch sleeve braid 3 inches from end of sleeve. General officers wear 1 1/2- inch blue sleeve braid 3 inches from end of sleeve. Coat and trousers will match in shade and material. (Semiformal uniform is authorized for cadets only.)
			X				X	This uniform is authorized for cadets only. Semi-drape, single-breasted with four buttons, pleated breast pockets, and inside hanging lower pockets; pockets have flaps with buttons centered on bottom edge of flap. The bottom of coat extends to length of fingertip with hands slightly cupped; will not be form fitting; suppressed at waist with ease in shoulders, chest, and underarms. Coat and trousers will match in shade and material.

Table 2-1. Men's Service, Mess Dress, and Semiformal Uniforms								
L I N E	Item	New Service Dress	Old Service Dress (Cadets Only)	Long Sleeve Shirt	Short Sleeve Shirt	Mess Dress	Semiformal (Cadets Only)	Wear Instructions/Materials
						X		For senior member officers and NCOs only. Worn for social functions of a general or official nature (black-tie affairs); a tuxedo is civilian equivalent. Semi-fitted; sleeves will end approximately 1/4 inch from heel of the thumb; single-breasted, straight back with three CAP crest, USAF coat of arms, or USAF "Wing and Star" buttons diagonally on both sides and a two-button length chain as a front closure; satin shawl collar and lapels; center back length will be 3 1/2 inches to 4 inches below natural waistline. Senior member officers wear 1/2-inch wide dark blue, sleeve braid 3 inches from end of the sleeve. General officers wear 1 1/2 inch wide sleeve braid 3 inches from end of sleeve. Jacket and trousers will match in shade and material.
2	Shirt (Long Sleeve)	X	X	X				Blue, worn with tie. Collar of shirt shows 1/4 or 1/2 inch above coat collar; with arms hanging naturally, sleeves extend to heel of thumb. It has two pleated pockets and convertible cuffs; tapered fit is optional. Military creases are prohibited. Sleeve crease is centered on epaulet.
	Shirt (Short Sleeve)	X	X		X			Blue. Tie is optional unless worn with service dress uniform. Collar of shirt shows 1/4 or 1/2 inch above coat collar; with arms bent at a 90-degree angle, sleeve should barely touch or come within 1-inch of the forearm; will have tapered fit; military creases are prohibited. Sleeve crease is centered on epaulet.
	Long Sleeve					X		White, conventional soft dress-type with turn-down collar and French cuffs with pleated or plain front.

L I N E	Item	New Service Dress	Old Service Dress (Cadets Only)	Long Sleeve Shirt	Short Sleeve Shirt	Mess Dress	Semiformal (Cadets Only)	Wear Instructions/Materials
	Long Sleeve						X	White. Plain knitted or woven, commercial type with short or medium point collar (not button-down or formal wing-tip style), without design with button or French cuff. Authorized for cadet members only with the service coat.
3	Trousers	X	X	X	X		X	Trim-fitted with no bunching at waist or bagging at seat; knee and bottom leg widths not altered beyond current specifications for the waist size; front of trouser legs rests on the front of shoe or boot with a slight break in the crease; back of trouser legs will be approximately 7/8 of an inch longer than the front. Full cut, straight hanging and without cuffs; available in 100% polyester, polyester wool tropical and polyester or wool blend, serge weave. Will not be bloused over boots. Trousers must be worn at the natural waist line and not resting on hips.
						X		Without cuffs, high-rise with side pockets, 7/8- inch blue satin striping on side of leg, no pleats.
4	Belt	X	X	X	X		X	Woven 1 1/4 inch cotton web or 1 1/4 inch elastic, solid or woven, belt with matching silver-color metal tip and buckle of chrome-like finish. Silver tip end of the belt extends beyond the buckle, facing the wearer's left; no blue fabric shows. General officers may wear the "Wing and Star" design, shiny finish emblem and belt buckle.
5	Tie	X	X	X	X		X	Polyester herringbone twill. Wear with service dress coat or trousers. Tip of tie will be no more than 1 1/2 inch above or below top of belt buckle. Wear with semiformal only when wearing new-style service dress uniform.

Table 2-1. Men's Service, Mess Dress, and Semiformal Uniforms								
L I N E	Item	New Service Dress	Old Service Dress (Cadets Only)	Long Sleeve Shirt	Short Sleeve Shirt	Mess Dress	Semiformal (Cadets Only)	Wear Instructions/Materials
			X	X	X			Without design or sheen, 2 to 3 inch wide; may be tapered at the center with a pointed end or un-tapered with square end. Polyester or wool, synthetic or blends; woven and pre-tied ties are optional. Tip of tie will be no more than 1 1/2 inch above or below top of belt buckle.
	Bow Tie					X		Blue satin, 5 to 5 1/2 inches long and 2 1/2 inches wide with square ends without design.
			X				X	Blue satin or black, 5 to 5 1/2 inches long and no wider than 2 1/2 inches with square ends, silk, or synthetic without design. Wear with semiformal only when wearing old-style service dress uniform.
6	Tie Tack or Tie Bar	X	X	X	X			Center tie tack or tie clasp between bottom edge of knot and bottom tip of tie. CAP crest, Air Force coat of arms, Air Force Wing and Star, or grade insignia may be worn. Grade insignia tie tack or tie bar with CAP crest is authorized for wear with uniform or civilian clothing.
7	Footwear (Low Quarters)	X	X	X	X	X	X	Black oxford; lace-up style with a plain rounded toe or a plain rounded capped toe; without perforation or design, sole will not exceed 1/2 inch in thickness and the heel will not exceed 1 inch in height (measured from the inside front of the heel); may have low wedge heel; smooth or scotch grained leather or man-made material; high gloss or patent finish.
	(Combat Boots)	X	X	X	X			Black, with or without safety toe; must have a plain rounded toe or rounded capped toe with or without perforated seam; zipper or elastic inserts are optional; no designs. Highly polished, high gloss, or patent leather.

Table 2-1. Men's Service, Mess Dress, and Semiformal Uniforms								
L I N E	Item	New Service Dress	Old Service Dress (Cadets Only)	Long Sleeve Shirt	Short Sleeve Shirt	Mess Dress	Semiformal (Cadets Only)	Wear Instructions/Materials
	(Dress Boots)	X	X	X	X			Black with rounded plain or rounded capped toe; zipper or elastic inserts optional; no design; sole will not exceed 1/2 inch in thickness and shoe heels will not exceed 1 inch in height (measured from the inside front of the heel).
8	Socks	X	X	X	X	X	X	Plain black, without design. EXCEPTION: Plain white socks may be worn with boots.
9	Outer-garments	X	X	X	X	X	X	Wear outdoors and remove in an office environment; use good judgment in choosing appropriate garments for wear based on weather conditions and duties. Shoulder patch is worn on all outer garments except new service dress coat and mess dress.
	(Pullover Sweater)			X	X			V-neck, long-sleeve, with epaulets and cuffed sleeves. Indoor or outdoor garment; tie is optional when wearing short sleeve shirt; wear collar or shirt inside or outside sweater; not exposed when wearing another outer garment.
	(Cardigan Sweater)			X	X			50% acrylic and 50% wool cardigan sweater with epaulets. Indoor or outdoor garment; when worn outdoors must be buttoned. Tie is optional when wearing short sleeve shirt.
	(Light-weight Blue Jacket)			X	X			Partially lined, water repellent, waist length, zipper front, with two slant pockets and knitted cuffs and waistband; worn with or without insulated liner. Zip up at least halfway; not authorized for wear when service dress uniform is designated or more appropriate. Wear over pullover sweater is authorized; however, sweater is not exposed.

Table 2-1. Men's Service, Mess Dress, and Semiformal Uniforms								
L I N E	Item	New Service Dress	Old Service Dress (Cadets Only)	Long Sleeve Shirt	Short Sleeve Shirt	Mess Dress	Semiformal (Cadets Only)	Wear Instructions/Materials
	(Double-breasted All-weather Coat)	X	X	X	X	X	X	Stand-up collar, six-button front, shoulder epaulet with buttons, sleeve straps with buckles, split raglan and set in the back. Coat will fit over service coat loose enough to accommodate shoulders of service coat without binding at armholes when arms are moved. Sleeves will extend 1/2 inch beyond service coat sleeves; length of coat will fall between knee length to 6 inches below back crease of knee. Top button may be left unbuttoned.
	(Raincoat)	X	X	X	X	X	X	Single-breasted with fly front; waterproof polyvinyl butyl nylon. Sleeves extend 1/2 inch beyond service coat sleeves; loose fitting with bottom of coat extending between bottom of knee cap and mid calf; neck button may be left unbuttoned.
	(Overcoat)	X	X	X	X	X	X	Same as all-weather coat; water resistant, double-breasted with belt and buckle, button throat closure, shoulder straps, sleeve straps, center back vent, facing tabs, and zip-out liner.
10	Scarf	X	X			X	X	White or gray. Tucked in with authorized outer garments, except pullover sweater; will not exceed 10 inches in width; all wool or cotton simplex, with or without napped surface.
11	Gloves or Mittens	X	X			X	X	Black or gray leather, knitted, tricot and suede, or a combination of leather, knitted, tricot, and suede.

Table 2-1. Men's Service, Mess Dress, and Semiformal Uniforms								
L I N E	Item	New Service Dress	Old Service Dress (Cadets Only)	Long Sleeve Shirt	Short Sleeve Shirt	Mess Dress	Semiformal (Cadets Only)	Wear Instructions/Materials
12	Headgear (Service Cap)	X	X	X	X			Worn squarely on the head with no hair protruding in front of the cap; large size satin finish cap insignia (with a post screw) is centered on the front of the cap. Visor-type service cap is banded with dark blue 1 3/4-inch braid; has front black chinstrap; an optional version with braid of an open mesh construction, and an optional black leather back strap. An optional rear chinstrap or rain cover may be worn. Cap will not be crushed. NOTE: Cadet NCOs and Airmen will not wear the service cap. (EXCEPTION: Cadet honor guards may wear service cap. See Chapter 3 for details).
	(Flight Cap)	X	X	X	X			Worn slightly to the wearer's right with vertical crease of the cap in line with the center of the forehead, in a straight line with the nose. The cap extends approximately 1 inch from the eyebrows in the front. If not worn, tuck under the belt on either side, between first and second belt loops; cap will not fold over belt. Cap has dark-blue colored edge braid for cadets, senior member NCOs, Airmen and senior members without grade; silver and blue in a diamond pattern edge braid for all senior member officers; and silver-colored edge braid for general officers. All shades and materials of cap are authorized with any uniform combination. Top of cap will not be crushed or made to form a peak in the rear. Senior members wear metal satin finish flight cap insignia. Cadet officers wear metal grade insignia. Cadet NCOs and Airmen wear metal flight cap insignia.
13	Earmuffs	X	X			X	X	Solid dark blue, back, or gray (commercial design of any material). Wear only with authorized outer garments and service dress uniforms.

Table 2-1. Men's Service, Mess Dress, and Semiformal Uniforms								
L I N E	Item	New Service Dress	Old Service Dress (Cadets Only)	Long Sleeve Shirt	Short Sleeve Shirt	Mess Dress	Semiformal (Cadets Only)	Wear Instructions/Materials
14	Cuff Links	X	X	X		X	X	Plain, silver, satin finish or highly polished cuff links. May bear the Air Force coat of arms, Air Force Wing and Star, or CAP crest.
15	Cummerbund					X		Blue satin, pleated without design. Worn with open edge of pleats facing upward.
16	Studs					X		Plain, silver, satin finish or highly polished to match cuff links.
17	Suspenders					X		Solid white, blue or black; will not be visible.
18	Undergarments	X	X	X	X	X	X	Mandatory. Wear undershorts and undershirt (V-neck, U-neck, or athletic style) with all service and dress uniforms; the white crew-neck style undershirt is authorized when wearing closed collar service and dress uniforms only.
19	Accouterments	X	X	X	X	X	X	Figures of each uniform show proper placement of accouterments and give a description of each. The finish of all accouterments must match. The service cap device matches the finish of the buttons on the service coat.

Table 2-2. Women's Service, Mess Dress, and Semiformal Uniforms								
L I N E	Item	New Service Dress	Old Service Dress (Cadets Only)	Long Sleeve Blouse	Short Sleeve Blouse	Mess Dress	Semiformal (Cadets Only)	Wear Instructions/Materials
1	Coat	X					X	Polyester or wool blend, serge weave; semi-drape, single-breasted with three buttons, one welt on upper left side, and two lower pocket flaps. With arms hanging naturally, sleeves end approximately 1/4 inch from the heel of the thumb. Ensure the bottom edge of coat extends 3 to 3 1/2 inches below the top of the thigh; roll-press sleeves and lapel. Senior member officers wear 1/2-inch blue sleeve braid 3 inches from end of sleeve. General officers wear 1 1/2-inch blue sleeve braid 3 inches from end of sleeve. Coat and skirt or slacks will match in shade and material.
	(Blazer or Princess Style)		X				X	Dark blue with a single row of three buttons and two patch pockets slightly below the waistline. Coat and skirt or slacks will match in shade and material. This uniform is authorized for cadets only. Available in 100% polyester or polyester wool tropical. Coat follows the contours of the figure but allows ease of movement without pulling in the back at the waist, either split seam or princess style. The length is proportional to height. Collar is set away from the neck. The sleeves end approximately 1/4 inch from the heel of the thumb; roll-press sleeves and lapel. Wear with any of the available service skirts and slacks except the new service dress slacks or skirt.

Table 2-2. Women's Service, Mess Dress, and Semiformal Uniforms								
L I N E	Item	New Service Dress	Old Service Dress (Cadets Only)	Long Sleeve Blouse	Short Sleeve Blouse	Mess Dress	Semiformal (Cadets Only)	Wear Instructions/Materials
	Jacket					X		For senior member officers and NCOs only. For social functions of a general or official nature (black tie affairs); an evening gown is civilian equivalent. Single-breasted, loose fitting at the waist with CAP crest, Air Force coat of arms, or Air Force Wing and Star buttons on each side of front. Jacket ends 2 1/2 to 3 inches below the waistline; front opening will gap approximately 2 to 3 inches at bottom; 1/2-inch dark blue sleeve braid (shade 1095) is worn 2 1/2 inches from end of sleeve by senior member officers; sleeves are wrist length; jacket and skirt match in shade and material. General officers wear 1 1/2-inch wide sleeve braid 3 inches from end of sleeve.
2	Blouse (Tuck-in style) (Long Sleeve and Short Sleeve)	X	X	X	X			Blue. Wear all blouses with tab when wearing service dress uniforms, long sleeve, or when higher decorum is appropriate. Collar of blouse must show 1/4 or 1/2 inch above coat collar with arms hanging naturally. Long sleeves extend to heel of thumb; short sleeves should barely touch or come within 1 inch of the forearm with arms bent at a 90-degree angle; collar lies softly around neck and does not meet in the front, but is separated by blue inverted V tie tab with self-fastening tails (blouses without Velcro tabs under collar). Blouses that have Velcro tabs under collar must use inverted V tie tab with Velcro tabs; pointed collar and epaulets. Long sleeves have round cuffs with buttonhole closures on each cuff. Blouse may be modified to accommodate cuff links. Will have tapered fit, military creases prohibited. Tuck blouse into slacks or skirt. Sleeve crease will be centered on epaulet.

Table 2-2. Women's Service, Mess Dress, and Semiformal Uniforms								
L I N E	Item	New Service Dress	Old Service Dress (Cadets Only)	Long Sleeve Blouse	Short Sleeve Blouse	Mess Dress	Semiformal (Cadets Only)	Wear Instructions/Materials
	Semi-form Fitting	X	X	X				Blue, long sleeve with dark blue inverted V tie tab. Same as tuck-in style; princess line, with epaulets and pointed collar; long sleeves have round cuffs with buttonhole closures on each cuff. Blouse may be modified at member's expense to accommodate cuff links. Ensure bottom of blouse is not visible below the bottom of service dress coat, pullover or cardigan sweater, or lightweight jacket. Will have tapered fit, military creases prohibited. Wear tucked in or out with available service skirts and slacks. Sleeve crease will be centered on epaulet.
	(Long-Sleeve)					X		White, conventional soft dress-type with turn-down collar and French cuffs with pleated front. Women may wear men's pleated front shirt.
	(Semi-form Fitting)	X	X				X	White, polyester or cotton, princess line, button front, with small pointed collar; wear with blue inverted V tie tab. Semiformal uniform authorized for cadets only.
3	Slacks	X	X	X	X			Slacks fit naturally over the hips with no bunching at waist or bagging at seat; bottom front of slacks rests on the front of shoe or boot with a slight break in the crease; back of legs is approximately 7/8 of an inch longer than the front. Tailored straight hanging, no flare at bottom, with two one-quarter front pockets and center fly-front opening or center front closure with front and back waist darts, two one-quarter top side pockets, and waist band with five belt loops. May not be bloused over boots.

Table 2-2. Women's Service, Mess Dress, and Semiformal Uniforms								
L I N E	Item	New Service Dress	Old Service Dress (Cadets Only)	Long Sleeve Blouse	Short Sleeve Blouse	Mess Dress	Semiformal (Cadets Only)	Wear Instructions/Materials
4	Skirt	X		X	X		X	Skirt hangs naturally over the hips with a slight flare; skirt lengths will be no shorter than the top of the kneecap nor longer than the bottom of the kneecap, straight style with belt loops, a kick pleat in back; two pockets, and a pleated front; skirts have a back zipper and lining attached to the waist.
	Skirt (Continued)		X	X	X		X	Modified A-line, six-gore, free hanging, with or without waistline, with or without belt loops. Skirt has a left zipper and lining attached to the inside; skirt length will be no shorter than the top of the kneecap, nor longer than the bottom of the kneecap.
	(Dress)					X		Ankle length; one-panel front, and one-or-two panel back. Straight-hanging, with no flare from hip to hem; seam on left side split to top of knee or A-line, flared from hip to hem.
5	Belt	X	X	X	X		X	With skirt or slacks with belt loops; silver tip end of the belt extends beyond the buckle facing the wearer's right; no blue fabric shows. Woven 1-inch cotton web or 1-inch elastic, solid or woven, belt with matching silver-color metal tip and buckle of chrome-like finish. General officers may wear the "Wing & Star" design, shiny finish emblem and belt buckle.
6	Tie Tab	X		X	X		X	Blue inverted V tie tab, polyester herringbone twill with self-fastening tails.
			X	X	X			Inverted V tie tab with Velcro tabs.
						X		Blue satin, inverted V tie tab.
			X				X	Black crescent-shaped or blue satin inverted V tie tab. (Semiformal authorized for cadets only.)
7	Cummerbund					X		Blue satin, pleated without design. Worn with open edge of pleats facing downward.

Table 2-2. Women's Service, Mess Dress, and Semiformal Uniforms								
L I N E	Item	New Service Dress	Old Service Dress (Cadets Only)	Long Sleeve Blouse	Short Sleeve Blouse	Mess Dress	Semiformal (Cadets Only)	Wear Instructions/Materials
8	Footwear (Dress Boots)	X	X	X	X			Heels of a height suitable to the individual but no higher than 2 1/2 inches (measured from inside sole of the boot to end of heel lift). Wear boots with skirt or slacks; however, if worn with skirt, remove boots and wear pumps or oxfords while in workplace. Plain black, commercial design without ornamentation such as buckles, bows or straps.
	(Pumps)	X	X	X	X	X	X	Heels of a height suitable to the individual, but no higher than 2 1/2 inches (measured from the inside sole of shoe to the end of heel lift). Do not wear shoes with platform soles, extra-thick soles, or heels. Plain black, commercial design without ornamentation such as buckles, bows, straps; smooth, scotch-grained leather or man-made material, patent or high gloss finish. Black satin optional for mess dress.
	(Low Quarters)	X	X	X	X			Black oxford; lace-up style with a plain rounded toe or a plain rounded capped toe; without perforation or design; sole will not exceed 1/2 inch in thickness and the heel will not exceed 1 inch in height (measured from the inside front of the heel); may have low wedge heel; smooth or scotch-grained leather or man-made material; high gloss or patent finish.
	(Combat Boots)	X	X	X	X			Worn with slacks only. Black, with or without safety toe; must have a plain rounded toe or rounded capped toe with or without perforated seam; zipper or elastic inserts are optional; no designs. Highly polished, high gloss, or patent leather.
9	Socks	X	X	X	X			Plain black without design with low quarters; plain black or white socks with combat boots or dress boots. White socks must not show when crossing legs. Wear hose if not wearing socks.

Table 2-2. Women's Service, Mess Dress, and Semiformal Uniforms								
L I N E	Item	New Service Dress	Old Service Dress (Cadets Only)	Long Sleeve Blouse	Short Sleeve Blouse	Mess Dress	Semiformal (Cadets Only)	Wear Instructions/Materials
10	Hose	X	X	X	X	X	X	Commercial, sheer, nylon in neutral, dark brown, black, off-black, or dark blue shades that complement the uniform and the individual's skin tone. Do not wear patterned hose.
11	Outer-garments	X	X	X	X	X	X	Wear outdoors only and remove in an office environment; use good judgment in choosing appropriate garments for wear based on weather conditions and duties.
	(Pullover Sweater)			X	X			V-neck, long sleeve, with epaulets and cuffed sleeves. Indoor or outdoor garment; tie tab is optional with short sleeve blouse; wear collar of blouse inside or outside sweater; not exposed while wearing another outer garment.
	(Cardigan Sweater)			X	X			50% acrylic and 50% wool cardigan sweater with epaulets. Indoor and outdoor garment; when worn outdoors, must be buttoned. Tab is optional when wearing short sleeve blouse.
	(Light-weight Blue Jacket)			X	X			Zip up at least halfway; not authorized for wear when service dress uniform is designated or more appropriate; may wear over pullover sweater; partially lined, water repellent, waist length zipper front, with two slant pockets and knitted cuffs with or without insulated line; may wear men's jacket as long as it presents a neat, professional appearance.
	(Double-breasted All-weather Coat)	X	X	X	X	X	X	Coat will fit over service coat loose enough to accommodate shoulders of service coat without binding at armholes when arms are moved. Sleeves will extend 1/2 inch beyond service coat sleeves; length of coat will fall between knee length to 6 inches below back crease of knee, top button may be left unbuttoned. Stand-up collar, six-button front, shoulder epaulet with buttons, sleeve straps with buckles, split raglan and set in the back.

Table 2-2. Women's Service, Mess Dress, and Semiformal Uniforms								
L I N E	Item	New Service Dress	Old Service Dress (Cadets Only)	Long Sleeve Blouse	Short Sleeve Blouse	Mess Dress	Semiformal (Cadets Only)	Wear Instructions/Materials
	(Raincoat)	X	X	X	X	X	X	Sleeves extend 1/2 inch beyond service coat sleeves; loose fitting with bottom of coat extending between bottom of kneecap and mid-calf; may leave neck button unbuttoned. Single breasted with fly front; waterproof polyvinyl butyl nylon.
	(Overcoat)	X	X	X	X	X	X	Loose enough to fit over service coats; shoulders fit loose enough to accommodate shoulders of service coat without binding at armholes when moving arms. Sleeves will extend 1/2 inch beyond the sleeve of the service coat; length of coat not shorter than 1/2 inch below the bottom of the skirt nor longer than 6 inches below the back crease of the knee; may leave neck button unbuttoned. Water resistant, double breasted with belt and buckle, button throat closure, shoulder straps, sleeve straps, center back vent, facing tabs, and zip-out liner.
12	Scarf	X	X			X	X	White or gray all wool or cotton simplex, with or without napped surface. Tucked in with authorized outer garments, except pullover sweater; will not exceed 10 inches in width.
13	Gloves or Mittens	X	X			X	X	Black or gray leather, knitted, tricot or suede; or a combination of leather, knitted, tricot, and suede.
14	Headgear (Service Cap)	X	X	X	X			Solid dark blue. Worn squarely on the head; center large size satin finish double-clutch (without post screw) cap insignia on the front of the cap. Rounded design, sides form a front brim. Clear plastic rain scarf or white net wing scarf optional; helmet-type designed to cover headgear and tie under chin is authorized. NOTE: Cadet NCOs and Airmen will not wear the service cap (EXCEPTION : Cadet honor guard members may wear service cap. See Chapter 3 for details).

Table 2-2. Women's Service, Mess Dress, and Semiformal Uniforms								
L I N E	Item	New Service Dress	Old Service Dress (Cadets Only)	Long Sleeve Blouse	Short Sleeve Blouse	Mess Dress	Semiformal (Cadets Only)	Wear Instructions/Materials
	(Flight Cap)	X	X	X	X			Worn slightly to the wearer's right with vertical crease of the cap in line with the center of the forehead, in a straight line with the nose; approximately 1 inch from the eyebrows in the front. When not wearing the flight cap but wearing a belt, tuck under the belt on either side, between first and second belt loops; cap will not fold over the belt. Cap has dark blue colored edge braid for Senior member NCOs and Airmen, senior members without grade and cadets; silver and blue in a diamond pattern edge braid for senior member officers; silver colored edge braid for general officers. All shades and material of cap are authorized with any uniform combination. Senior members wear metal satin finish flight cap insignia. Cadet officers wear metal grade insignia. Cadet NCOs and Airmen wear metal flight cap insignia.
15	Earmuffs	X	X			X	X	Commercial design of any material; solid dark blue, black or gray. Wear with any outer garments and service dress uniforms.
16	Cuff Links	X	X	X		X	X	Oval cuff links bearing the Air Force coat of arms, Air Force Wing and Star, or CAP crest (satin finish or highly polished, highly polished with service dress uniform only). Plain silver, satin finish, or highly polished cuff links are also authorized.
17	Handbags (Vinyl)	X	X	X	X		X	Plain black, vinyl with fold over flap and plain silver colored clasp fastener.
	(Leather or Vinyl)	X	X	X	X		X	Plain black leather or vinyl, without ornamentation, with or without plain fold-over flap with or without single-placed silver or gold colored clasp. May have adjustable shoulder strap with or without buckle. May be patent leather or high gloss not to exceed 13 x 9 x 4 1/2 inches deep.

Table 2-2. Women's Service, Mess Dress, and Semiformal Uniforms								
L I N E	Item	New Service Dress	Old Service Dress (Cadets Only)	Long Sleeve Blouse	Short Sleeve Blouse	Mess Dress	Semiformal (Cadets Only)	Wear Instructions/Materials
	(Clutch Style)	X	X	X	X	X	X	Plain black smooth or scotch-grain leather, patent leather or high gloss, or man-made material without ornamentation. Fabric, suede, or patent leather with mess dress. Purse will be no larger than 6 1/2 x 11 inches nor smaller than 5 x 9 inches. It must have concealed closure and may have a wrist strap. EXCEPTION: Do not use patent leather purse when wearing semiformal dress (semiformal authorized for cadets only).
18	Undergarments	X	X	X	X	X	X	Mandatory. Bra and panties with all uniforms; wear other appropriate undergarments as necessary, provided they are not visible at the neck when worn with an open collar; may wear white crew-neck style undershirt when wearing closed collar service and dress uniforms.
19	Accouterments	X	X	X	X	X	X	Figures for each uniform show proper placement of accouterments and give a description of each. The finish of all accouterments must match.

Table 2-3. Men's and Women's Battle Dress Uniforms		
L I N E	Item	Wear Instruction/Materials
1	Shirt (Long Sleeve)	Cotton and nylon twill or rip-stop cotton; single-breasted with four bellow pockets with flaps; straight-cut bottom sleeve tabs, and side body panels with or without take-up tabs. Long sleeve camouflage pattern (woodland green) may be rolled up; if rolled up, sleeve material must match shirt and will touch or come within 1 inch of forearms when arm is bent at a 90-degree angle; may be removed in the immediate work area. When removed, T-shirt (other than athletic or sleeveless style) will be worn. Military creases are prohibited.
2	Trousers	Cotton and nylon twill or rip stop cotton camouflage pattern (woodland green) with button front closure, strap ankle adjustment, and six pockets. Blouse trousers over combat boots. Material of shirt and trousers must match.
3	Belt and Buckle	Dark blue, 1 1/4-inch woven cotton web, solid or woven elastic belt with black metal tip end and plain (open faced) black buckle. Black tip may extend up to 1 inch beyond the buckle, facing to the wearer's left (men) or facing wearer's right or left (women).
4	Footwear (Combat Boots)	Black, with or without safety toe, plain rounded toe or rounded capped toe with or without perforated seam. Zipper or elastic inserts optional, smooth or scotch-grained leather or man-made material, and may have a high gloss or patent finish.
	(Hot-weather Tropical)	Green or black cloth, or canvas and black leather with plain toe with zipper or elastic inserts.
5	Socks	Plain black or white socks may be worn with boots.
6	Headgear (BDU Cap)	Worn squarely on head with no hair protruding in front of the cap. When not being worn, is stowed in either of the lower cargo pockets on the trousers. Only AF-style or Army-style BDU cap will be worn. All senior members and cadet airmen and NCOs do not wear any type of insignia on the cap. Cadet officers wear the embroidered grade insignia on the cap 1/2 inch above visor.
	(BDU Baseball Cap)	Same as BDU cap with the addition that when not wearing, may attach to either lower trouser pocket button on the BDU.
	(CAP Baseball Cap)	Color, unit designation, and cloth or silk screen organizational emblem or badge as prescribed by unit commander. Emblem or badge, if authorized, will be centered 1/2 inch above visor. No other features such as stars, designs, individual's name and so forth, are authorized.
7	Outergarments	Worn outdoors and removed in an office environment. Use good judgment in choosing appropriate garments for wear based on weather conditions and duties.
	(Field Jacket)	Camouflage pattern (woodland green). Configure accouterments on jacket the same as the BDU shirt. If field jacket has epaulets, cloth ultramarine blue grade insignia and CAP cutouts are placed on the epaulet. If the field jacket does not have epaulets, wear grade insignia and CAP cutouts on the collar the same as BDU shirt.

Table 2-3. Men's and Women's Battle Dress Uniforms		
L I N E	Item	Wear Instruction/Materials
	(Double-breasted All-weather Coat)	Stand-up collar, six-button front, shoulder epaulets with buttons, sleeve straps with buckles, split raglan and set in the back. Coat will fit loosely enough to accommodate shoulders of BDU without binding at armholes when arms are moved; sleeves will extend 1/2 inch beyond BDU sleeves; length of coat will fall between knee length to 6 inches below back crease of knee; top button may be left unbuttoned.
	(Raincoat)	Loose fitting with bottom of coat extending to between bottom of kneecap and mid-calf; neck button may be left unbuttoned. Single-breasted with fly front; waterproof polyvinyl butyl nylon.
8	Safety Vest	Orange plastic, mesh, or cloth. Will be worn when participating in ground team activities.
9	Scarf	Gray. Only with outer garments. Tuck in; will not exceed 10 inches in width; all wool or cotton simplex, with or without napped surface.
10	Gloves or Mittens	Black or gray leather, knitted, tricot and suede, a combination of leather, knitted, tricot and suede. May wear with or without outer garments.
11	Earmuffs	Solid dark blue, black or gray; commercial design of any material.
12	Undergarments	Mandatory. All appropriate underwear will be worn.
	(Undershirts)	Brown or black. Either V-neck, U-neck, crew neck or athletic style without pockets. Black or brown turtlenecks, dickeys, or thermal undershirts without pockets may also be worn. EXCEPTION: members may wear white thermal undershirts even if exposed at neck. Unit commanders may prescribe color, unit designation, and cloth or silk screen emblem, to be worn on left side of chest not to exceed 5 inches in diameter.
13	Handbags (Vinyl)	Women only. Plain black, vinyl with fold-over flap and plain silver-colored clasp fastener.
	(Leather or Vinyl)	Women only. Plain black leather or vinyl without ornamentation with or without fold over flap, with or without single silver or gold colored clasp. Purse may have adjustable shoulder strap with or without buckles; may be patent leather or high gloss not to exceed 13 x 9 x 4 1/2 inches deep.
	(Clutch Style)	Plain black smooth or scotch-grain leather, patent leather or high gloss, or man-made material without ornamentation. Purse will be no larger than 6 1/2 x 11 inches or smaller than 5 x 9 inches. It must have a concealed closure and may have a wrist strap.

Table 2-4. Men's and Women's Flight Suit		
L I N E	Item	Wear Instruction/Materials
1	Flight Suit	Green NOMEX. Flight crew members electing to wear this flight suit must meet the weight and grooming standards. Worn with the badges and devices described in Figure 2-19.
2	Flight Jacket	The green flight jacket is the only outer garment authorized for wear with the green AF-style flight suit. Grade insignia, CAP command patch, American flag and leather name patch are worn. The member has the option of wearing the same optional patches on the flight jacket as worn on the flight suit. The Air Force brown leather flight jacket is NOT authorized with this or any Air Force style uniform. The MA-1 flight jacket or CWU-45/P or CWU-36/P NOMEX flight jackets may be worn.
3	Footwear	Any style leather, plain, black shoe or boot may be worn. No western style boots (Ropers and Wellingtons are acceptable). For safety reasons, mesh style boots are not recommended with flying clothing.
4	Undergarments	White, black or brown T-shirts are authorized. All appropriate underwear will be worn.
5	Socks	Black socks or neutral hose will be worn.
6	Headgear	Flight cap or CAP baseball cap for both men and women.
7	Scarf	A yellow and red CAP command scarf is authorized to be worn tucked into the neck.

Table 2-5. Clothing/Accessory Standards		
I T E M	To present the proper military image	Will be:
1	Clothing	Neat, clean, pressed, proper fit, in good condition, zipped, snapped or buttoned.
2	Footwear	Shined, in good repair.
3	Watch	Conservative.
4	Bracelet	Conservative, no wider than one inch, and not present a safety hazard.
5	Rings	A maximum of three conservative rings may be worn at any time.
6	Earrings	Men do not wear. Women may wear small spherical, conservative, diamond, gold, white pearl, or silver pierced or clip earrings. Earrings must fit tightly without extending below earlobe except for connecting band on clip earrings. Only one earring per earlobe.
7	Tattoos/Brands	Excessive tattoos/brands will not be exposed or visible (includes visible through the uniform) while in uniform. Excessive is defined as any tattoo/brands that exceeds 1/4 of the exposed body part and those above the collarbone and readily visible when wearing an open collar uniform.
8	Body Piercing	Members are prohibited from attaching, affixing or displaying objects, articles, jewelry or ornamentation to or through the ear, nose, tongue, or any exposed body part (includes visible through the uniform) when in uniform. EXCEPTION: Women are authorized to wear one small spherical, conservative, diamond, gold, white pearl, or silver pierced, or clip earring per earlobe and the earring worn in each earlobe must match. Earrings should fit tightly without extending below the earlobe. (EXCEPTION: Connecting band on clip earrings.) Civilian Attire: (1) <i>Official duty:</i> Members are prohibited from attaching, affixing or displaying objects, articles, jewelry or ornamentation to or through the ear, nose, tongue, or any exposed body part (includes visible through clothing) when representing CAP in civilian attire. EXCEPTION: Women are authorized to wear one earring per earlobe and the earring worn in each earlobe must match. The type and style of earrings worn by women on a military installation should be conservative and kept within sensible limits. (2) <i>Off duty on a military installation when there with CAP activities:</i> Members are prohibited from attaching, affixing or displaying objects, articles, jewelry or ornamentation to or through the ear, nose, tongue, or any exposed body part (includes visible through clothing). EXCEPTION: Piercing of earlobes by women is allowed, but should not be extreme or excessive. The type and style of earrings worn by women on a military installation should be conservative and kept within sensible limits.

Table 2-5. Clothing/Accessory Standards		
I T E M	To present the proper military image	Will be:
9	Eyeglasses, Sunglasses	Free of ornamentation on frames and lenses. Conservative, clear, slightly tinted, or photosensitive lenses indoors or in formation. Conservative lenses and frames outdoors (faddish styles and mirrored lenses prohibited). No sunglasses in formation. Not worn around the neck.
10	Necklaces	Concealed under collar or undershirt.
11	Pens and Pencils	Concealed. EXCEPTION: When carried in pen/pencil compartment of BDU, utility or field uniform, flight suit or flight jacket.
11	Pagers, Cellular Phone, Two-way Radio	Clipped to waistband or purse, or carried in left hand. Only one is authorized.
13	Headphones and Earphones	Prohibited unless required to perform duties.
14	Umbrella	Plain, black or dark blue, carried in left hand.
15	Attaché Case, Gym Bag, Back Pack, and Women's Purses	May be carried in left hand or over left shoulder. (EXCEPTION: Members wear backpack using both shoulder straps when riding two-wheeled vehicles or using crutches.)
16	Religious Head Coverings	Indoors: Plain, dark blue, or black without ornamentation. Outdoors: May be worn underneath military headgear if does not interfere with proper fit or appearance of the headgear. For example, Jewish yarmulkes meet this requirement if they do not exceed 6 inches in diameter.
17	"Camel Pack" Water Containers	Authorized for use with CAP field uniform or BDU only, in hot weather conditions, with or without built-in backpack. Will be black, brown, or camouflaged.