

Exhibit A
ORDER 08-12

**Vogel Canyon, Comanche National Grassland,
Otero County, Colorado**

Portions of Sections 19 and 30, Township 26 South, Range
54 West, 6th PM, Colorado

Portions of Section 24, Township 26 South, Range 55 West,
6th PM, Colorado

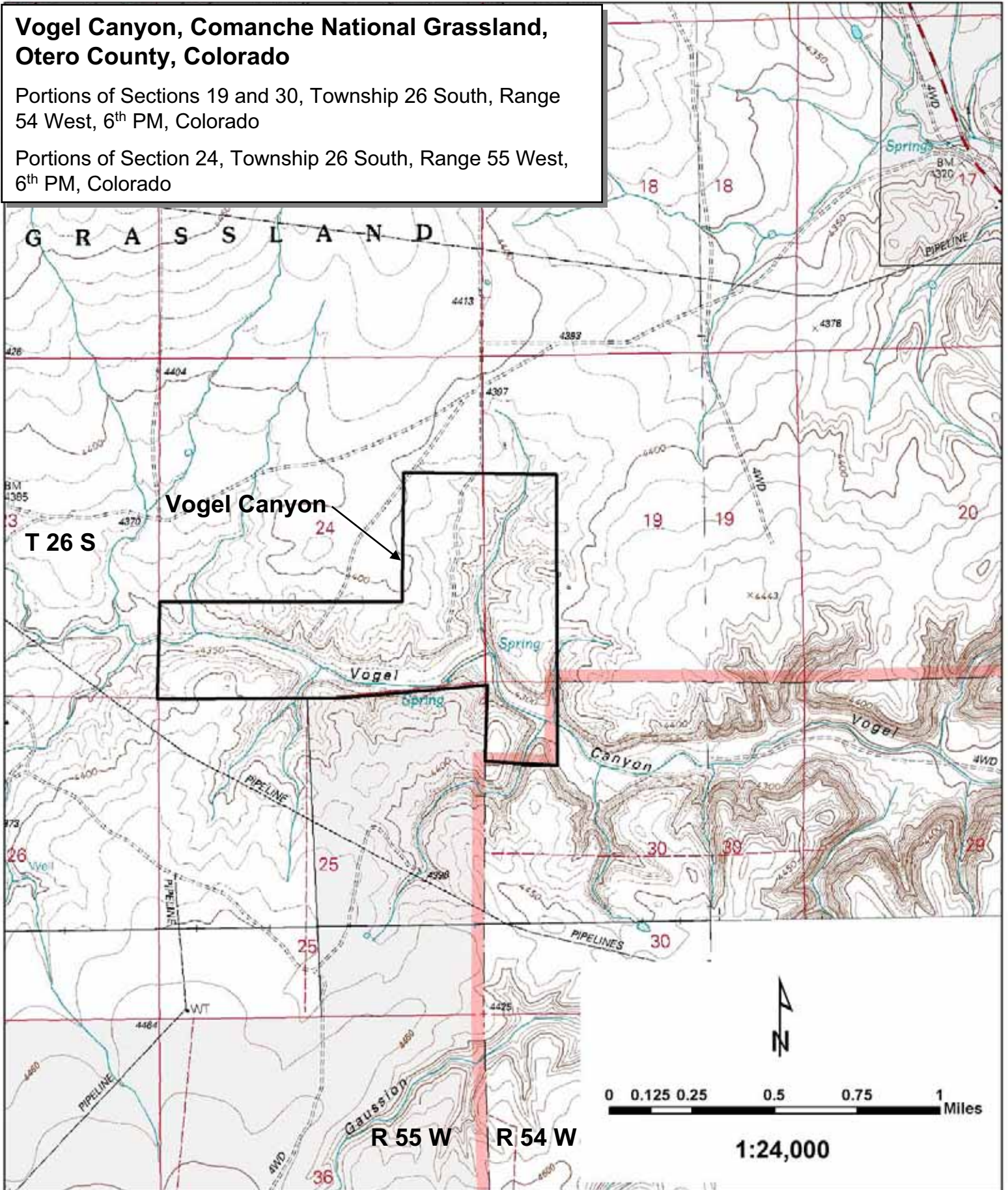


Exhibit B ORDER 08-12

Picture Canyon, Comanche National Grassland, Baca County, Colorado

All of Sections 7 and 18, Township 35 South, Range 47 West, 6th PM, Colorado, excluding Forest Service Road 564 and Forest Service Road 535. See Order for additional details.

