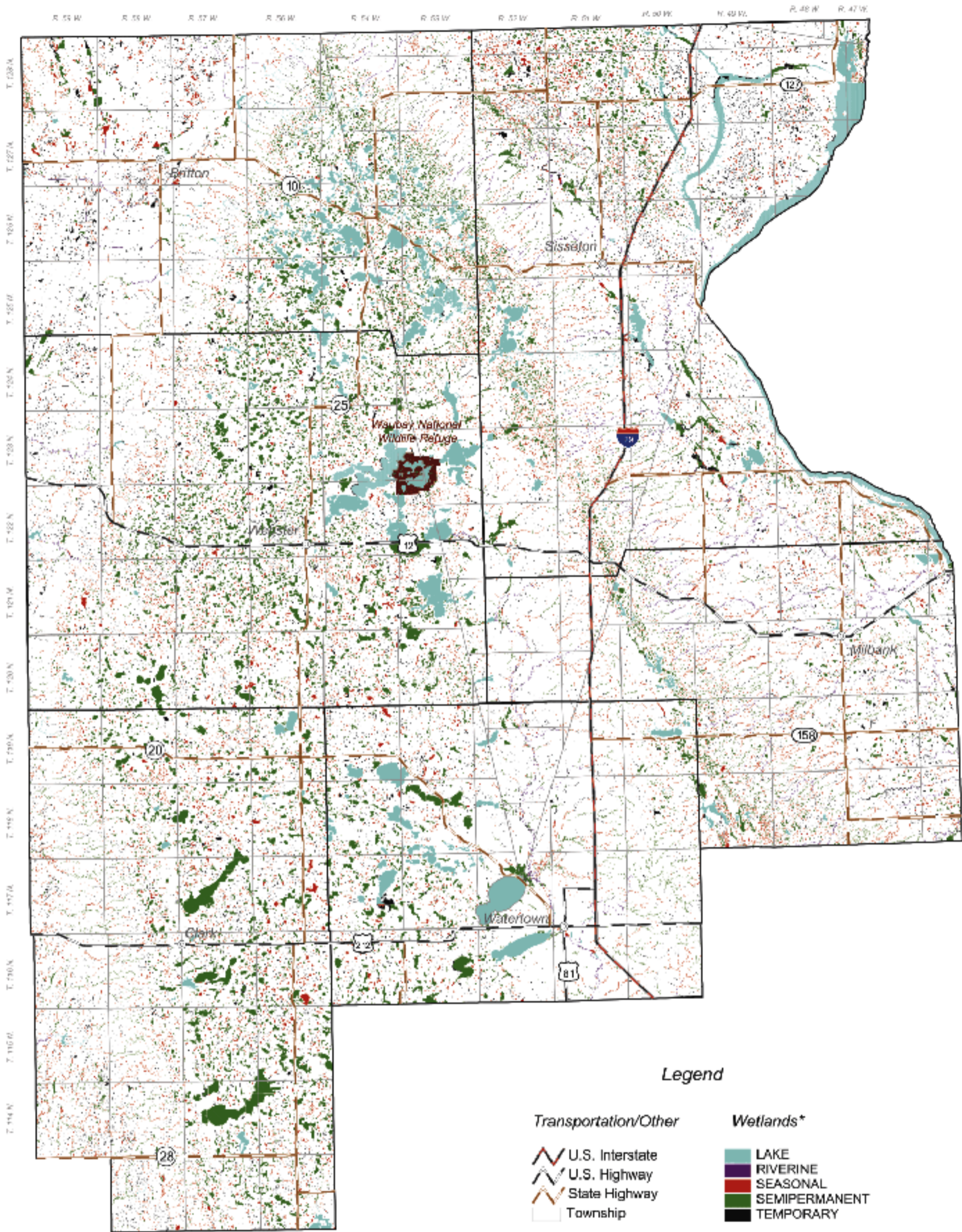


# Waubay Wetland Management District

## Wetland Resources (Based on 1987 NWI)



### Legend

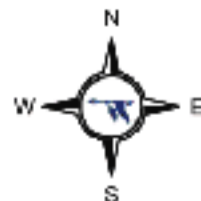
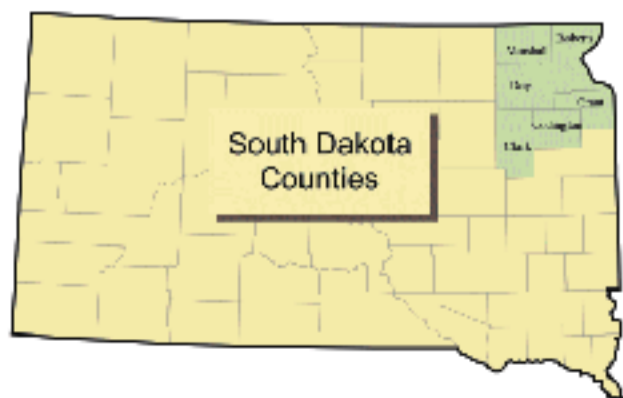
#### Transportation/Other

- U.S. Interstate
- U.S. Highway
- State Highway
- Township

#### Wetlands\*

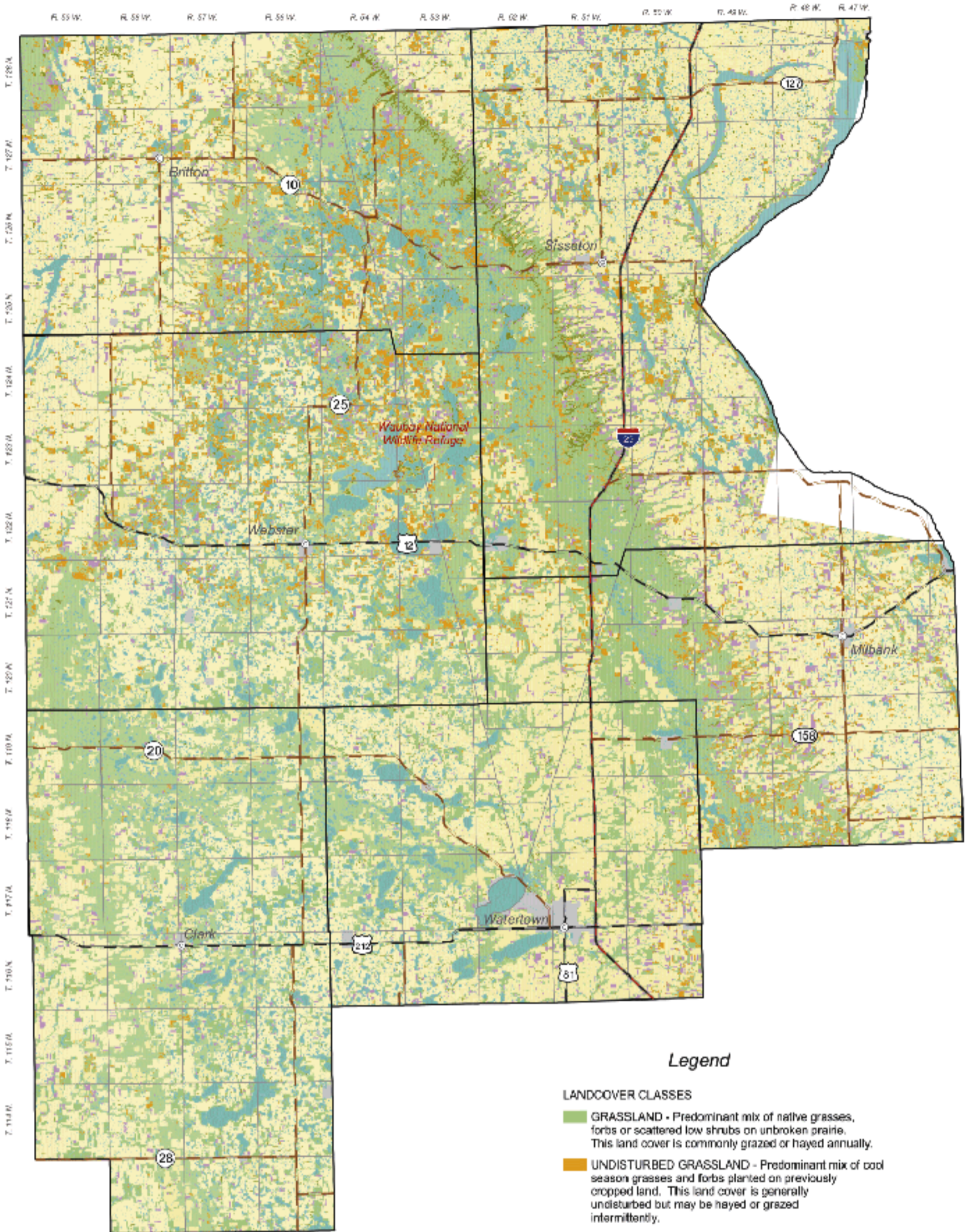
- LAKE
- RIVERINE
- SEASONAL
- SEMIPERMANENT
- TEMPORARY

### Vicinity Map



# Waubay Wetland Management District

## Landcover



### Legend

#### LANDCOVER CLASSES

- GRASSLAND - Predominant mix of native grasses, forbs or scattered low shrubs on unbroken prairie. This land cover is commonly grazed or hayed annually.
- UNDISTURBED GRASSLAND - Predominant mix of cool season grasses and forbs planted on previously cropped land. This land cover is generally undisturbed but may be hayed or grazed intermittently.
- HAYLAND - Predominant mix of alfalfa and cool season grasses hayed once or twice annually.
- CROPLAND - Tilled and planted with small grains or row crops that are harvested annually. includes fallow fields
- FOREST - Areas of mature trees naturally occurring or planted.
- WETLAND - Wetland basins identified by the National Wetlands Inventory.
- URBAN - Residential Areas
- BARREN - Areas of bare soil that are not cultivated, including mines and gravel pits.
- CLOUD COVER/NO DATA- Areas covered by clouds on the dates that the satellite images were collected, or no imagery available.

