



U.S. Department
of Transportation

**Federal Aviation
Administration**

ADMINISTRATOR'S FACT BOOK

March 2005

(Updated quarterly)

Produced by:
Assistant Administrator for Financial Services
Office of Cost and Performance Management
Standards and Information Division

Web site: <http://www.atctraining.faa.gov/factbook>

Table of Contents

FAA Vision and Mission.....	Inside Front Cover
FAA Values	Inside Back Cover

Safety

Aviation Accidents by Type of Operations	3*
Aviation Accident Rates by Type of Operation.....	4*
Airspace Incidents by Incident Type.....	5*
Airspace Incident Rates by Incident Type.....	6
NTSB U.S. Transportation Fatalities	7

FAA Air Traffic

FAA Air Traffic Activity	8*
Air Route Traffic Control Center Activity.....	9*
50 Busiest FAA Air Traffic Control Towers.....	10*
50 Busiest Approach Control Facilities.....	12*
Automated Flight Service Station Activity.....	14*

Airports

Number of U.S. Airports.....	16*
National Airspace Systems Delays	17*

Aircraft

U.S. Air Carrier Activity	18
U.S. General Aviation Activity.....	19
Aircraft Certification Service	20*

Industry Trends

Scheduled U.S. Air Carrier Traffic & Fin. Trends	21
Aviation Forecasts	22

Commercial Space Transportation

AST Licensing and Industry Activity	23*
U.S. Commercial Space Launch Schedule	24*

Airmen

Active Pilots and Nonpilots	25
FAA Organizational Chart.....	Center Fold*

Table of Contents (cont.)

FAA Regional Boundaries Map28

FAA Resources

FAA Employment29
FAA Percent Minority and Women Employment.....30
FAA Major Work Force Employment.....31*
Labor Relations.....32*
FAA Finances33
FAA NAS Operational Facilities.....34*

Organization

FAA Officials–Washington Headquarters.....35*
FAA Officials–Major Field Organizations.....38
FAA Officials--International Offices40
FAA Flight Plan 2005-200941*

For further information call APF-100 (202-267-9946)

*Updated this issue

Distribution: A-WXYZE-3; A-FOF-O(STD)

Aviation Accidents by Type of Operation

Type of Operation	Year	Jan	Feb	Mar	Apr	May	Jun	Jul	Aug	Sep	Oct	Nov	Dec	Year Total
Large Air Carrier	2003	5	3	4	8	5	7	2	5	6	3	3	3	54
	2004	0	2	2	5	3	1	3	2	3	4	1	3	29
Commuter	2003	0	0	0	0	0	0	2	0	0	0	0	0	2
	2004	0	1	0	2	0	0	0	0	1	1	0	0	5
Air Taxi	2003	7	6	4	7	6	7	8	4	7	3	10	7	76
	2004	5	1	9	3	3	3	9	8	10	3	8	6	68
General Aviation	2003	103	89	138	147	157	210	202	172	157	154	102	111	1,742
	2004	92	107	100	131	156	156	198	170	158	148	94	85	1,595
Rotorcraft*	2003	15	10	16	16	21	31	31	13	15	14	15	16	213
	2004	7	13	8	14	16	15	26	25	15	13	12	12	176

* Part 135 and US registered general aviation rotorcraft accidents.

Note: Preliminary data and subject to change.
As of: 02/02/05

Source: AAI-200
(202) 267-3279

Aviation Accident Rates by Type of Operation

Type of Operation	2000		2001		2002		2003		% Chg 03-02	
	Number	Rate	Number	Rate	Number	Rate	Number	Rate	Number	Rate
Large Air Carriers.....	56	.31	46	.24	41	.24	54	.32	32%	33%
Commuter.....	12	3.25	7	2.33	8	3.18	2	0.72	-75%	-77%
Air Taxi.....	80	2.04	72	2.40	59	2.03	76	2.61	29%	29%
General Aviation.....	1,837	6.57	1,726	6.78	1,713	6.69	1,742	6.71	2%	0%

Accident Rates are per 100,000 Flight Hours. Flight hours compiled by FAA
Rotorcraft rates discontinued, currently under review

Note: 2003 data preliminary.
As of: 02/02/05

Source: NTSB
www.nts.gov/aviation/stats.htm

Airspace Incidents by Incident Type

Incident Type	Year	Jan	Feb	Mar	Apr	May	Jun	Jul	Aug	Sep	Oct	Nov	Dec	Year Total
Near Midair Collisions	2003	10	13	10	9	13	17	13	20	19	25	7	6	162
	2004	11	16	10	8	14	11	15						85
Pilot Deviations	2003	127	150	287	248	184	238	267	271	239	243	248	188	2,690
	2004	160	149	212	219	211	252	261						1,464
Operational Errors	2003	69	86	99	106	109	106	134	134	102	98	91	78	1,212
	2004	74	79	91	78	100	116	132						670
Vehicle Pedestrian Deviations	2003	26	27	31	20	29	21	32	27	22	27	21	18	301
	2004	17	21	23	27	20	29	15						152
Surface Incidents	2003	67	72	83	59	83	80	89	94	73	83	75	63	921
	2004	49	64	69	75	73	93	82						505
Runway Incursions*	2003	29	26	31	20	26	29	24	36	24	32	25	30	332
	2004	13	27	30	25	20	39	32	37	17	21	31	18	310

Note: Preliminary data and subject to change.

Source: ATX-400

(202) 385-4802

*ATS

(202) 385-4788

As of: 08/20/04

*As of: 02/02/05

Airspace Incident Rates by Incident Type

Incident Type									Percent Change	
	2000		2001		2002		2003		2002 - 2003 (4)	
	Number	Rate	Number	Rate	Number	Rate	Number	Rate	Number	Rate
Operational Errors (1).....	1,138	.69	1,181	.74	1,041	.66	1,212	.78	16%	19%
Pilot Deviations (2).....	1,900	1.15	1,975	1.20	1,922	1.17	2,690	1.63	40%	39%
Surface Incidents (3).....	1,391	2.06	1,249	1.91	1,009	1.55	921	1.47	-9%	-5%

(1) Per 100,000 Facility Activities

(2) Per 100,000 Flight Hours

(3) Per 1,000,000 Airport Operations

(4) Calculations use fifteen decimal places for rates (rounded two places for display).

Note: 2002 data preliminary and subject to change.

Source: ATX-400

(202) 385-4802

As of: 08/20/04

National Transportation Safety Board

2002-2003 U.S. Transportation Fatalities

	2002	2003 ¹
Highway		
Passenger cars.....	20,569	19,460
Light Trucks and Vans.....	12,274	12,444
Pedestrians.....	4,851	4,749
Motorcycles.....	3,270	3,661
Pedalcycles ²	665	622
Medium and heavy trucks.....	689	723
Buses.....	45	40
All Other ³	642	944
Total.....	43,005	42,643
Grade Crossings ⁴	(357)	(329)
Rail		
Intercity ⁵		
Trespassers and nontrespassers..... ⁶	603	568
Employees and contractors.....	31	24
Passengers on trains.....	7	2
Light, heavy, and commuter rail..... ⁷	220	173
Total.....	861	767
Marine		
Recreational Boating.....	750	703
Cargo Transport.....	22	15
Commercial fishing..... ⁸	28	25
Commercial Passengers.....	9	16
Total.....	809	759
Aviation		
General Aviation.....	581	626
Airlines.....	0	22
Air Taxi.....	35	45
Commuter.....	0	2
Foreign/Unregistered..... ⁹	9	12
Total.....	625	707
Pipeline		
Gas.....	10	12
Liquids.....	1	0
Total.....	11	12
GRAND TOTAL.....	45,311	44,888

1 2003 preliminary estimates. Aviation data from NTSB; all other from DOT. 2 Includes bicycles or other cycles. 3 Includes vehicle occupant fatalities in vehicle types; ex. farm or construction equipment. 4 Grade crossing fatalities not counted separately for determining the grand totals because they are included in the highway and rail categories, as appropriate. 5 Data reported to Federal Rail Administration (FRA). 6 Includes persons on railroad property with and without permission. Does not include motor vehicle occupants killed at grade crossings. 7 Data reported to the FTA. Fatalities for commuter rail operations may also be reported to the FRA and may be included in the intercity railroad fatalities. 8 Refers to only operational fatalities. 9 Includes non-U.S. registered aircraft involved in accidents in the U.S.

Air Traffic

FAA Air Traffic Activity (In Thousands)

Aircraft Handled by	Jan-Dec 2004*	Jan-Dec 2003
FAA ARTCC's		
Air Carrier.....	24,278	22,749
Air Taxi.....	10,029	9,337
General Aviation.....	8,374	8,060
Military.....	4,071	3,877
TOTAL....	46,752	44,023

Airport Operations

Logged by FAA Towers

Air Carrier.....	12,923	12,462
Air Taxi.....	10,766	10,102
General Aviation.....	21,383	22,373
Military.....	1,801	1,930
TOTAL....	46,873	46,867

Instrument Operations

Logged by FAA Towers

Air Carrier.....	14,209	13,698
Air Taxi.....	12,917	12,210
General Aviation.....	17,967	18,439
Military.....	3,016	3,227
TOTAL....	48,109	47,574

Flight Services

Logged by: **

Flight Service Stations.....	893	896
Automated Flight Service Stations.....	25,922	26,633
TOTAL....	26,815	27,529

*Preliminary

As of: 01/31/05

**As of: 01/31/05

Source: APO-130

(202) 267-3350

**Source: ATX-400

(202) 385-4734

Air Route Traffic Control Center Activity

CY 2003 Rank	Center	Aircraft Handled (000's)	
		Jan-Dec 2004*	Jan-Dec 2003
1	Cleveland, OH.....	3,102	2,975
2	Atlanta, GA.....	3,138	2,959
3	Chicago, IL.....	2,998	2,852
4	New York, NY.....	3,048	2,805
5	Indianapolis, IN.....	2,881	2,713
6	Washington, DC.....	2,934	2,595
7	Jacksonville, FL.....	2,415	2,274
8	Memphis, TN.....	2,297	2,228
9	Miami, FL.....	2,438	2,182
10	Fort Worth, TX.....	2,213	2,131
11	Kansas City, KS.....	2,056	2,053
12	Minneapolis, MN.....	2,180	2,041
13	Los Angeles, CA.....	2,174	2,021
14	Houston, TX.....	2,107	2,005
15	Boston, MA.....	1,883	1,780
16	Albuquerque, NM.....	1,765	1,701
17	Denver, CO.....	1,836	1,684
18	Oakland, CA.....	1,688	1,601
19	Salt Lake City, UT.....	1,522	1,461
20	Seattle, WA.....	1,309	1,272
21	Anchorage, AK.....	613	572
22	Guam **.....	153	120

*Preliminary

**Center Radar Approach Control (CERAP)

Source: APO-130
(202) 267-3350

As of: 01/31/05

50 Busiest FAA Airport Traffic Control Towers

CY 2003 Rank	Tower and State	Airport Operations (000's)	
		Jan-Dec 2004*	Jan-Dec 2003
1	Chicago/O'Hare Int'l., IL.....	992	931
2	Atlanta International, GA.....	965	912
3	Dallas/Ft. Worth Int'l., TX.....	814	776
4	Los Angeles Int'l, CA.....	655	623
5	Phoenix Sky Harbor Int'l, AZ.....	599	591
6	Denver International, CO.....	567	510
7	Minneapolis-St. Paul Int'l, MN.....	541	508
8	Covington/Cincinnati Int'l, KY.....	516	506
9	Las Vegas/McCarran Int'l, NV.....	562	501
10	Detroit Metro Wayne Co., MI.....	523	492
11	Houston/G Bush Intercont'l, TX.....	521	479
12	Van Nuys, CA.....	449	461
13	Philadelphia Int'l, PA.....	475	446
14	Charlotte/Douglas Int'l, NC.....	468	442
15	Miami International, FL.....	396	411
16	Newark International, NJ.....	440	411
17	Memphis International, TN.....	381	402
18	Salt Lake City Int'l, UT.....	413	400
19	Lambert-St. Louis Int'l, MO.....	290	394
20	Phoenix-Deer Valley, AZ.....	340	389
21	Orlando/Sanford, FL.....	357	385
22	Boston/Logan Int'l, MA.....	422	379
23	La Guardia, NY.....	406	379
24	Washington Dulles Int'l, VA.....	503	366
25	Denver/Centennial.....	357	361

*Preliminary

As of: 01/31/05

50 Busiest FAA Airport Traffic Control Towers

CY 2003 Rank	Tower and State	Airport Operations (000's)	
		Jan-Dec 2004*	Jan-Dec 2003
26	Pittsburgh International, PA.....	336	361
27	Santa Ana/John Wayne, CA.....	373	358
28	Seattle Tacoma Int'l, WA.....	359	355
29	Metropolitan Oakland Int'l.....	340	343
30	Long Beach/Daughtery, CA.....	339	339
31	Daytona Beach Int'l, FL.....	301	337
32	San Francisco Int'l, CA.....	353	335
33	Chicago Midway, IL.....	340	328
34	Seattle/Boeing Field, WA.....	299	311
35	Honolulu International, HI.....	320	306
36	Orlando International, FL.....	326	301
37	Baltimore/Wash. Int'l, MD.....	309	300
38	Prescott/E. A. Love Field, AZ.....	273	297
39	Anchorage International, AK.....	309	293
40	Tulsa/Riverside, OK.....	285	292
41	John F. Kennedy Int'l, NY.....	333	291
42	Grand Forks International, FL.....	266	289
43	Fort Lauderdale/Hollywood, FL.....	315	288
44	Mesa/Falcon Field, AZ.....	262	282
45	Pontiac/Oakland Co. Int'l, MI.....	225	276
46	Portland International, OR.....	263	266
47	San Antonio International, TX.....	222	262
48	Cleveland Hopkins Int'l, OH.....	264	258
49	Washington National, DC.....	271	254
50	Tucson International, AZ.....	253	248

50 Busiest Radar Approach Control Facilities

CY 2003 Rank	Facilities/State	Instrument Ops (000s)	
		Jan-Dec 2004*	Jan-Dec 2003
1	Southern Calif. TRACON, CA.....	2,124	2,064
2	New York TRACON, NY.....	2,067	1,947
3	North California TRACON, CA.....	1,598	1,576
4	Potomac TRACON, DC.....	1,845	1,527
5	Chicago TRACON, IL.....	1,502	1,419
6	Atlanta TRACON, GA.....	1,387	1,324
7	Dallas/Ft Worth, TRACON, TX.....	1,306	1,265
8	Houston TRACON, TX.....	664	858
9	Miami International, FL.....	914	853
10	Phoenix TRACON, AZ.....	765	755
11	Denver TRACON, CO.....	771	707
12	Detroit TRACON, MI.....	722	684
13	Minneapolis TRACON, MN.....	681	648
14	Covington/Cincinnati Int'l, KY.....	668	644
15	Philadelphia International, PA.....	672	633
16	Las Vegas TRACON, NV.....	640	625
17	San Juan CERAP, PR.....	658	617
18	Salt Lake City TRACON, UT.....	525	597
19	Orlando International, FL.....	610	581
20	Charlotte/Douglas Int'l, NC.....	601	576
21	Daytona Beach Int'l, FL.....	495	562
22	Tampa International, FL.....	571	559
23	St Louis TRACON, MO.....	454	542
24	Seattle/Tacoma TRACON, WA.....	559	531
25	Boston TRACON, MA.....	692	513

* Preliminary

Source: APO-130
(202) 267-3350

As of: 01/31/05

50 Busiest Radar Approach Control Facilities

CY 2003 Rank	Facilities/State	Instrument Ops (000's)	
		Jan-Dec 2004*	Jan-Dec 2003
26	Honolulu Control Facility, HI	507	496
27	Memphis International, TN.....	457	475
28	Pittsburgh International, PA.....	431	457
29	San Antonio Int'l, TX.....	382	451
30	Jacksonville Int'l, FL.....	415	437
31	Pensacola TRACON, FL.....	383	423
32	Port Columbus Int'l, OH.....	375	383
33	Cleveland Hopkins Int'l, OH.....	387	371
34	Palm Beach International, FL.....	366	358
35	Dayton International, OH.....	360	356
36	Corpus Christi, TX.....	351	346
37	Washington National, DC.....	353	338
38	Portland TRACON, OR.....	331	332
39	Baltimore-Washington Int'l, MD.....	323	332
40	Austin, TX.....	307	325
41	Milwaukee/Gen Mitchell Intl, WI....	315	324
42	Anchorage TRACON, AK.....	330	313
43	Indianapolis International, IN.....	322	303
44	Raleigh-Durham Int'l, NC.....	326	302
45	Norfolk International, VA.....	303	302
46	Nashville International, TN.....	310	299
47	Oklahoma City/Will Rogers, OK	237	292
48	Yankee TRACON, CT.....	252	283
49	Kansas City International, MO.....	289	274
50	Louisville Intl/Standiford, KY.....	271	272

Automated Flight Service Stations Activity

CY 2003 Rank	AFSS/State	Flight Services (000's)	
		Jan-Dec 2004*	Jan-Dec 2003
1	Miami AIFSS, FL.....	1,265	1,176
2	St. Petersburg, FL.....	942	1,115
3	Leesburg, VA.....	762	821
4	Fort Worth, TX.....	726	762
5	Lansing, MI.....	722	747
6	Macon, GA.....	662	735
7	Prescott, AZ.....	634	654
8	Denver, CO.....	578	630
9	Millville, NJ.....	570	623
10	Raleigh, NC.....	573	610
11	San Angelo, TX.....	593	603
12	Kankakee, IL.....	548	596
13	Seattle, WA.....	575	579
14	Bridgeport, CT.....	533	557
15	Princeton, MN.....	564	549
16	Conroe, TX.....	506	505
17	Green Bay, WI.....	504	499
18	Mc Alester, OK.....	475	491
19	Oakland AIFSS, CA.....	444	482
20	Gainesville, FL.....	431	476
21	Anniston, AL.....	484	475
22	Hawthorne, CA.....	468	475
23	Williamsport, PA.....	554	469
24	Altoona, PA.....	483	456
25	Columbia, MO.....	438	450
26	Terre Haute, IN.....	418	445
27	Anderson, SC.....	400	425
28	Kenai AIFSS, AK.....	448	421
29	Albuquerque, NM.....	424	387
30	Burlington, VT.....	386	392

* Preliminary

Source: ATX-400
(202) 385-4734

Automated International Flight Service Station--AIFSS

As of: 01/31/05

Automated Flight Service Stations Activity

CY 2003 Rank	AFSS/State	Flight Services (000's)	
		Jan-Dec 2004*	Jan-Dec 2003
31	Riverside, CA.....	385	388
32	Reno, NV.....	399	383
33	Cleveland, OH.....	365	378
34	St. Louis, MO.....	376	377
35	Jonesboro, AR.....	362	374
36	Islip AIFSS, NY.....	331	370
37	Nashville, TN.....	386	361
38	Mc Minnville, OR.....	352	350
39	Grand Forks, ND.....	309	347
40	Rancho Murieta, CA.....	371	346
41	Bangor, ME.....	324	344
42	Dayton, OH.....	326	343
43	Wichita, KS.....	317	328
44	San Juan AIFSS, PR.....	257	321
45	Cedar City, UT.....	325	314
46	De Ridder, LA.....	297	308
47	Elkins, WV.....	285	285
48	San Diego, CA.....	270	276
49	Louisville, KY.....	251	266
50	Fort Dodge, IA.....	279	266
51	Greenwood, MS.....	238	258
52	Buffalo, NY.....	246	251
53	Honolulu, HI.....	267	246
54	Huron, SD.....	250	244
55	Columbus, NE.....	202	213
56	Great Falls, MT.....	207	205
57	Jackson, TN.....	183	191
58	Fairbanks, AK.....	178	182
59	Boise, ID.....	179	176
60	Casper, WY.....	160	166
61	Juneau, AK.....	137	142

Airports

Number of U.S. Airports ¹ (As of December 31)

	2004	2003	2002
Total Airports	19,815	19,581	19,572
Public Use Airports.....	5,288	5,286	5,286
# with Paved Runways.....	3,941	3,938	3,940
# with Unpaved Runways....	1,347	1,348	1,346
# with Lighted Runways.....	4,037	4,026	4,024
# with Unlighted Runways...	1,251	1,260	1,262
Private Use Airports.....	14,532	14,295r	14,286
# with Paved Runways.....	4,771	4,678	4,632
# with Unpaved Runways...	9,761	9,617	9,654
# with Lighted Runways.....	1,301	1,223	1,183
# with Unlighted Runways..	13,231	13,072	13,103
Public use airports abandoned...	10	19	16
Private use airports abandoned.	117	214	121
Certificated Airports*	599	628	633
Civil	542	555	558
Military	57	73	75

¹ Includes civil and joint-use civil-military airports, heliports, STOLports, and seaplane bases in the U.S. and its territories.

* Certificated airports serve Air Carrier Operations with aircraft seating more than 9 passengers seats. (FAR Part 139).

r revised

As of: 12/31/04

Source: AAS-330
(202) 267-8752

National Airspace Total System Delays

Year	Jan	Feb	Mar	Apr	May	Jun	Jul	Aug	Sep	Oct	Nov	Dec	YTD Total
2004*	28,104	32,274	34,001	32,459	50,800	52,121	46,894	43,770	30,412	37,271	35,234	32,446	455,786
2003	16,159	18,260	25,387	17,474	26,544	27,413	32,833	37,066	28,882	21,422	34,116	31,332	316,888
2002	14,158	13,821	20,020	24,027	28,533	33,770	32,304	29,056	24,493	25,266	17,712	22,489	285,649
2001	27,894	31,599	30,040	30,260	36,460	41,607	40,037	49,423	18,628	13,365	13,249	15,541	348,103 r/
2000	26,015	27,208	32,205	35,332	36,570	50,114	44,430	47,893	43,357	43,794	34,365	29,006	450,289 r/

Delays of 15 minutes or longer

r/ Revised

* Preliminary information that is subjected to change

As of: 02/01/05

Source: ATT-220
(703) 904-4470

Aircraft

U.S. Air Carrier Activity

	CY 2004	CY 2003	CY 2002
Total Number of Aircraft¹.....	19,382	19,356	19,578
Type of Carrier			
Domestic, flag, supplemental, scheduled, cargo air carriers, and commercial operators.....	7,720	7,579	7,576
Commuter Air Carriers and Air Taxis.....	11,662	11,777	12,002
Total Number of Aircraft¹.....	19,382	19,356	19,578
Type of Aircraft			
Jet.....	9,235	9,673	8,675
Turboprop.....	3,281	3,179	3,777
Piston.....	4,269	3,949	4,605
Rotary Wing.....	2,571	2,581	2,521
Air Carrier Traffic Statistics² (Millions)*			
Passenger miles flown.....	655,850	672,240	654,068
Passenger enplanements.....	647	613	630
Ton miles.....	91,564	94,430	95,919
Aircraft miles flown.....	7,068	7,104	6,838
Passenger load factor ³			
Domestic.....	54.8%	55.0%	70.3%
International.....	58.9%	59.0%	76.6%

¹ Source: Vital Information System

² Includes domestic and international scheduled service, of Certificated Route Air Carriers only.

³ Proportion of aircraft seating capacity that is sold.

As of: 02/28/05

Source: AFS-40
(202) 385-4514
*BTS (K-25)
(202) 366-8513

U.S. General Aviation and Air Taxi Activity

(Calendar Years)

	Estimated Active Aircraft (thousands)		Estimated Hours Flown (Millions)	
	2001	2000	2001	2000
Total	211.2	217.5	29.1	31.0
By Type Aircraft				
Piston.....	163.3	170.5	20.9	22.2
Turboprop.....	6.6	5.8	1.9	2.0
Jet.....	7.8	7.0	2.7	2.8
Rotary Wing.....	6.8	7.2	2.1	2.3
Other.....	6.5	6.7	0.3	0.4
Experimental.....	20.4	20.4	1.2	1.3
By Type Flying				
Corporate.....	7.8	11.0	2.7	3.8
Business.....	21.6	25.2	3.4	3.6
Personal.....	158.3	148.2	12.4	11.7
Instructional.....	10.5	14.9	4.6	5.4
Aerial Application.....	2.9	4.3	1.0	1.4
Aerial Observation.....	4.6	5.1	1.5	1.6
Aerial Other.....	0.5	1.0	0.2	N/A
External Load.....	0.2	0.2	0.1	0.2
Other Work.....	1.1	1.8	0.3	0.5
Sightseeing.....	0.5	0.9	0.2	0.2
Air Tours.....	0.3	0.3	0.2	0.2
Air Taxi.....	1.9	3.7	2.2	1.7
Air Medical Services...	1.0	1.0	0.4	0.4

N/A = Not Applicable

Source: APO-110

As of: 1/16/03

(202) 267-3103

Aircraft Certification Service

Aircraft Certification Mission and Program Profiles

	FY 2004	FY 2003
Type Certificates/Supplemental Type Certificates Issued.....	984	906
Other Design Approvals Issued.....	14,146	11,540
Production Approvals (Including Amendments) Issued.....	2,582	2,558
Airworthiness Certificates Issued.....	831	798
New Airworthiness Directives (AD) Issued.....	417	339
New Designees (Representative of the Administrator) Appointed.....	879	864
Total Active Designees.....	5,146	5,049

As of: 9/30/04

Source: AIR-503
(202) 267-7260

Industry Trends

Scheduled U.S. Air Carrier Traffic and Financial Trends

	1st Half FY 2004	1st Half FY 2003	Numerical Change	Percent Change
TRAFFIC				
ASM'S (in millions)				
Majors.....	395,104	390,719	4,385	1.1
Nationals.....	50,787	40,624	10,163	25.0
Regionals.....	12,038	10,520	1,518	14.4
Totals.....	457,929	441,863	16,065	3.6
RPM's (in millions)				
Majors.....	286,196	273,508	12,688	4.6
Nationals.....	36,388	27,313	9,075	33.2
Regionals.....	7,808	6,435	1,373	21.3
Totals.....	330,392	307,255	23,137	7.5
Load Factor (in percent)				
Majors.....	72.4	70.0	2.4	
Nationals.....	71.6	67.2	4.4	
Regionals.....	64.9	61.2	3.7	
Totals.....	72.9	69.5	2.6	
FINANCIAL				
Revenues (in millions)				
Majors.....	\$51,803	\$48,754	3,049	6.3
Nationals.....	5,964	4,689	1,275	27.2
Regionals.....	2,064	823	1,242	151.0
Totals.....	\$59,831	\$54,266	\$5,565	10.3
Expenses (in millions)				
Majors.....	\$52,830	\$53,500	(\$671)	(1.3)
Nationals.....	5,527	4,599	928	20.2
Regionals.....	1,863	784	1,079	137.8
Totals.....	\$60,219	\$58,882	\$1,337	2.3
Operating Profit/Loss (in millions)				
Majors.....	(\$1,027)	(\$4,746)	\$3,719	
Nationals.....	437	91	347	
Regionals.....	201	39	162	
Totals.....	(\$388)	(\$4,616)	\$4,228	

*Atlantic Coast Airlines and ExpressJet commenced reporting financial results using Form 41 in January of 2003. As a result, 1st quarter FY 2003 financial data for these carriers are not included in the 1st Half FY 2003 totals.

Source: APO-110

Aviation Forecasts

Estimated Forecast
FY 2003 FY 2007

FAA FACILITY WORKLOAD

Aircraft Handled by FAA ARTCC's (Millions)

Air Carrier.....	22.7	25.8
Air Taxi/Commuter.....	9.1	10.6
General Aviation.....	8.0	8.6
Military.....	3.9	3.9
Total.....	43.7	48.9

Operations Logged by FAA Towers (Millions)

Airport.....	62.7	70.0
Instrument.....	48.2	53.0

Flight Services Logged by Flight Services Stations (Millions)

	27.7	28.2
--	------	------

CIVIL AVIATION ACTIVITY

Certificated Route Air Carrier

Revenue Passenger Enplanements (Millions).....	532.7	630.8
Revenue Passenger Miles (Billions).....	607.5	745.9

Air Carrier Aircraft.....

	5,032	5,591
--	-------	-------

General Aviation Estimated

Hours Flown (Millions)**.....	26.7	28.7
Active Aircraft (Thousands)**.....	211.2	230.6

ESTIMATED FUEL CONSUMED BY U.S. DOMESTIC CIVIL AVIATION (Millions of Gallons)

Jet Fuel

Air Carrier.....	17,876	21,845
General Aviation.....	989	1,484

Aviation Gas

Air Carrier.....	2	2
General Aviation.....	276	290

Active Pilots (Thousands)**.....	625,011	673,465
---	----------------	----------------

** Calendar Year

Source: APO-110
(202) 493-4236

As of: 3/31/04

U.S. Commercial Space Transportation FAA

Licensed Activity

	CY 2005 (Projected)	CY 2004	CY 2003
<hr/>			
Licensed Commercial Launches			
TOTAL	10	14	8
Number of Orbital Launches	10	9	8
Number of Suborbital Launches	0-3	5	0
By Launch Vehicle Type			
Delta Family (Boeing Company)	2	0	0
Atlas Family (Lockheed Martin)	1	5	4
Pegasus (Orbital Sciences Corp.)	1	0	1
Taurus (Orbital Sciences Corp.)	0	1	0
Zenit 3SL (Sea Launch)	5	3	3
Falcon 1 (SpaceX)	1	0	0
SpaceShipOne (Scaled Composites)	0	5	0
other suborbital	0-3	0	0
By Launch Site (Federal)			
Cape Canaveral AF Station, FL	2	5	4
Vandenberg AFB, CA	1	1	1
Kwajalein / Marshall Islands	2	0	0
By Launch Site (Commercial)			
Pacific Ocean	5	3	3
Mojave Airport, CA	0	5	0
<hr/>			

Source: AST
(202) 267-7989

As of: 2/9/04

United States Commercial Space Launch Schedule, CY 2005

(launch dates are subject to change)

Payload (Operator)/ Description	Launch Company/ Vehicle	Launch Date/ Launch Site
<i>XM 3</i> (U.S.) Communications Satellite	Sea Launch (Boeing Launch Services, BLS) Zenit 3SL	February Pacific Ocean Platform
<i>INMARSAT 4 F1</i> (multinational) Comm. Satellite	Lockheed Martin (International Launch Services) Atlas V	March Cape Canaveral Air Force Station, FL
<i>Spaceway 1</i> (U.S.) Comm. Satellite	Sea Launch (BLS) Zenit 3SL	April Pacific Ocean Platform
<i>GOES-N</i> (U.S.) Remote Sensing Satellite	The Boeing Corporation (BLS) Delta IV	May Cape Canaveral Air Force Station, FL
<i>Telstar 8 / Intelsat A-8</i> (multinational) Comm. Satellite	Sea Launch (BLS) Zenit 3SL	Summer Pacific Ocean Platform
<i>C/NOFS</i> (U.S.) Science Satellite	Orbital Sciences Pegasus XL	Fall Kwajalein, Marshall Islands
<i>Razaksat</i> (Malaysia) Comm. Satellite	SpaceX Falcon 1	Fall Marshall Islands
<i>unannounced</i> (unannounced) Comm. Satellite	Sea Launch (BLS) Zenit 3SL	Fall Pacific Ocean Platform
<i>WorldView</i> (U.S.) Remote Sensing Satellite	The Boeing Company (BLS) Delta II	November Vandenberg Air Force Base, CA
<i>unannounced</i> (unannounced) Comm. Satellite	Sea Launch (BLS) Zenit 3SL	Fall Pacific Ocean Platform

As of: 2/9/05

Source: AST
(202) 267-7989

Active Pilots and Nonpilots (As of 31 December)

	2003		2002	
	Total	Women	Total	Women
Pilot-Total	625,011	37,694	631,760	38,257
Student.....	87,296	9,897	85,991	10,082
Private.....	241,045	15,487	245,230	15,906
Commercial.....	123,990	7,436	125,920	7,454
Airline Transport.....	143,504	4,850	144,706	4,792
Other ¹	29,176	24	29,913	23
Nonpilot-Total ²	509,835	18,030	515,570	17,114
Mechanic.....	313,032	5,734	315,928	5,295
Repairmen.....	37,248	1,800	37,114	1,789
Ground Instructor.....	72,692	5,385	73,658	5,169
Flight Engineer.....	61,643	2,070	63,681	2,124
Other ³	25,220	3,041	25,189	2,737
Flight Instructor	87,816	5,667	86,089	5,386

¹ Includes helicopter (only), glider (only), and recreational pilot certificates. Include Glider pilots represents pilots who received a medical examination within the last 25 months. Lighter-than-air type ratings are no longer being issued.

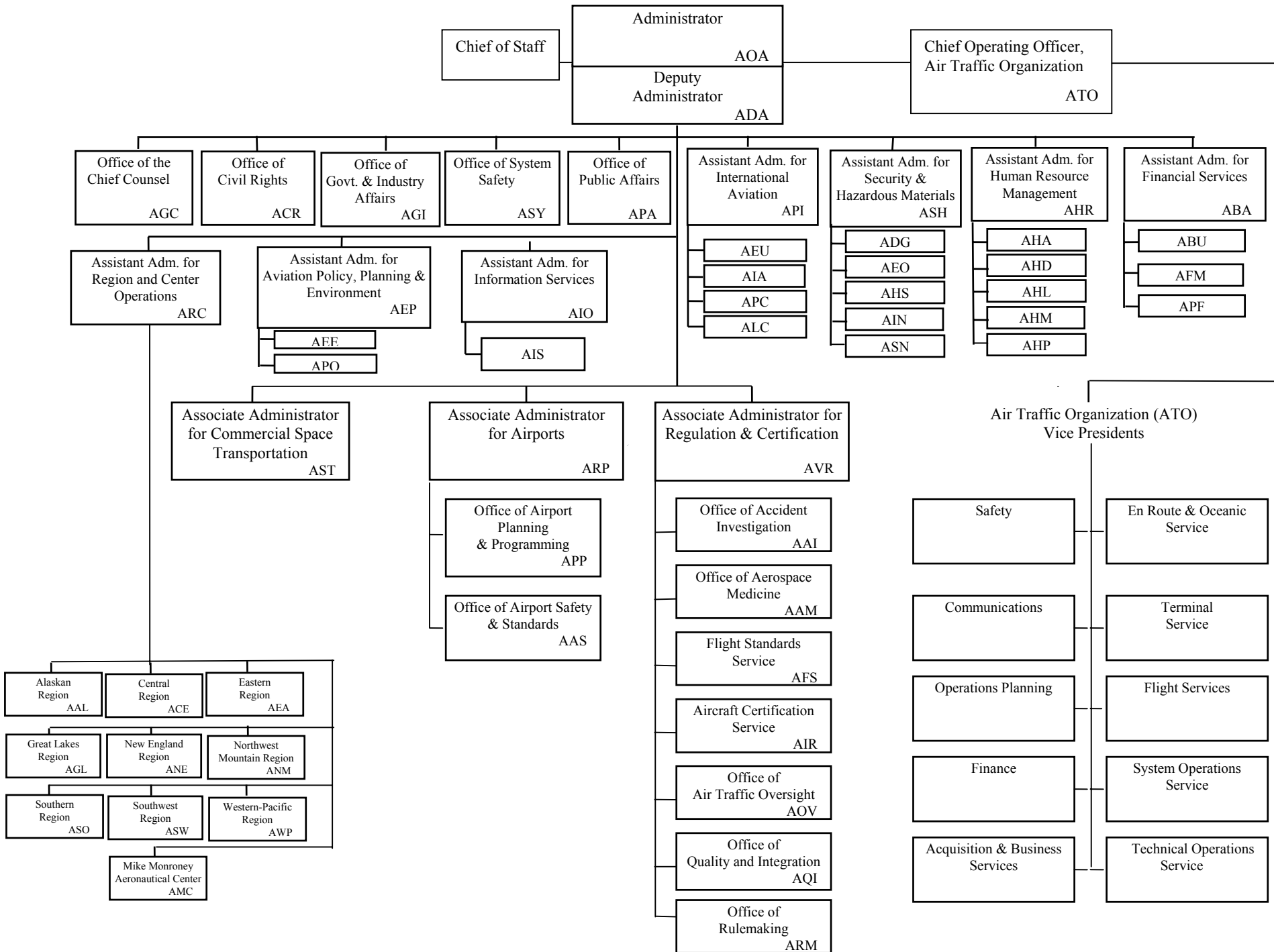
² Excludes non-pilots 70 years old or over in all certificate types except flight engineers and flight navigators.

³ Includes flight navigators, parachute riggers, and dispatchers.

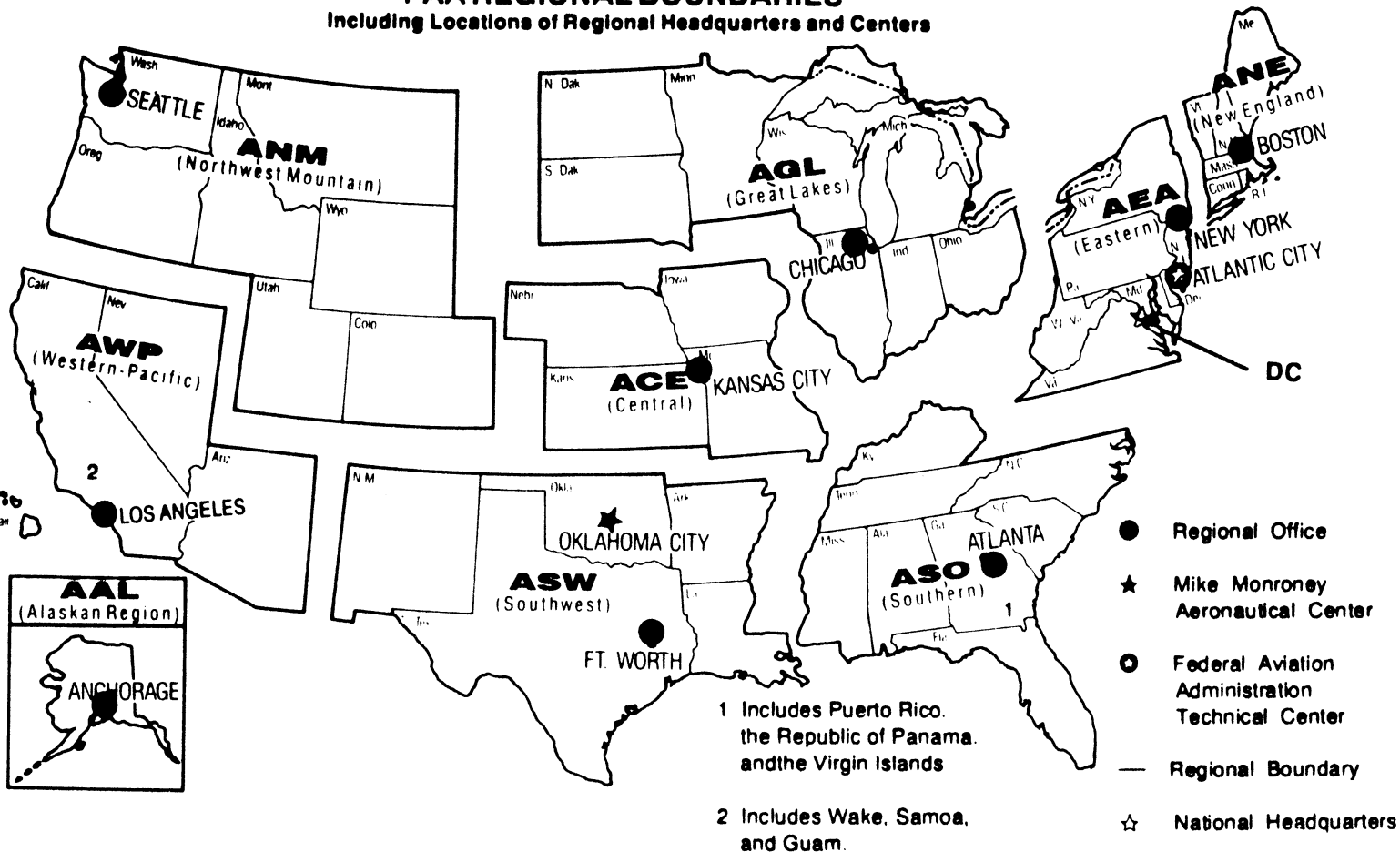
As of 12/31/03

**Source: APO-110
(202) 267-3352**

FEDERAL AVIATION ADMINISTRATION



**U.S. DEPARTMENT OF TRANSPORTATION
Federal Aviation Administration
FAA REGIONAL BOUNDARIES**
Including Locations of Regional Headquarters and Centers



FAA Resources

FAA Employment (Permanent Employees)¹

	FY04	FY 03
Line of Business		
Air Traffic Organization (ATO)*	36,328	35,801
Air Traffic Services (ATS)*	*	35,801
Regulation and Certification (AVR).....	6,570	6,354
Airports (ARP).....	480	461
Research and Acquisitions (ARA)*	*	1,722
Comm. Space Transportation (AST)....	55	56
Staff Offices*	3,896	4,105
*	47,329	48,503
Region/Center/Headquarters (included in above total)		
Aeronautical Center.....	1,561	1,578
Alaskan.....	1,330	1,385
Central.....	2,344	2,519
Eastern.....	5,220	5,359
Great Lakes.....	6,280	6,442
New England.....	1,861	1,938
Northwest Mountain.....	4,014	4,119
Southern.....	7,293	7,585
Southwest.....	5,259	5,293
Western-Pacific.....	5,114	5,388
Washington Headquarters (only) ²	4,178	4,055
Washington Headquarters Field ³	1,709	1,953
Technical Center.....	1,166	885

¹ Full time permanent and part time permanent employees only.

² Washington Headquarters employees physically located in FOB-10A and surrounding areas (i.e. Portals, Market Square, etc.).

³ Washington Headquarters employees physically located in the Field (i.e. Technical Center, Aeronautical Center, etc.)

* ATO became effective October 2003. ATO includes ATS, ARA and AOZ under Staff Offices.

As of: 10/25/04

Source: APF-100
(202) 267-9946

FAA Percent Minority & Female Employment¹

Lines of Business/Region/Center/Headquarters	% Minority		%Female	
	FY04	FY 03	FY04	FY 03
Air Traffic Organization (ATO)*	18.3	*	20.3	*
AirTraffic Services (ATS)*.....	*	17.5	*	19.3
Regulation and Certification (AVR).....	19.1	18.9	28.4	28.4
Airports (ARP).....	27.5	24.9	39.0	39.5
Research and Acquisitions (ARA)*.....	*	31.0	*	38.1
Commercial Space Transportation (AST).....	45.5	46.4	32.7	30.4
Staff Offices*.....	32.9	32.2	53.5	52.9
Total.....	19.8	19.5	24.4	24.2
Aeronautical Center.....	23.4	23.5	44.0	43.6
Alaskan.....	13.6	13.8	23.3	23.5
Central.....	14.9	14.7	25.6	25.1
Eastern.....	15.4	15.3	19.5	19.4
Great Lakes.....	11.5	11.4	20.6	20.4
New England.....	7.2	7.4	21.6	21.3
Northwest Mountain.....	12.9	12.9	22.3	22.4
Southern.....	21.6	21.2	19.7	19.6
Southwest.....	22.5	22.3	20.1	20.3
Western-Pacific.....	29.7	29.6	21.3	21.2
Washington Headquarters (only) ²	34.3	33.5	43.4	43.9
Washington Headquarters Field ³	19.4	19.2	33.2	32.1
Technical Center.....	21.6	21.8	31.4	32.0

¹ Full-time permanent, and part-time permanent employees only (FTE 1111 & 1132).

² Washington Headquarters employees physically located in FOB-10A and surrounding areas (i.e. Portals, Market Square, etc.).

³ Washington Headquarters employees physically located in the Field (i.e. Technical Center, Aeronautical Center, etc.).

* ATO became effective October 2003. ATO includes ATS, ARA and AOZ under Staff Offices.

Major Work Force Employment

	Employment ¹				
	FY05 1st QTR	FY04	FY03	%Chg. FY05 - FY04	Actual Change
Air Traffic					
Controller Work Force	16,858	17,070	17,598	-1.2%	-212
ATCS ² (bargaining unit employees)	14,525	14,736	15,386	-1.4%	-211
Traffic Management					
Coordinators ²	623	612	635	1.8%	11
Operations Supervisors ²	1,710	1,722	1,577	-0.7%	-12
Flight Service Stations	2,521	2,583	2,749	-2.4%	-62
Field Maintenance (210-211 only)	7,208	7,253	7,770	-0.6%	-45
Airports Work Force	474	472	467	0.4%	2
Aircraft Certification	1,149	1,141	1,178	0.7%	8
Flight Standards Work Force	4,563	4,564	4,628	0.0%	-1

¹ Full time permanent appointments (operations direct).

² Included in Air Traffic Controller Work Force Total.

Note: Supervisory Traffic Management Coordinators (STMCs) are no longer included in Controller Work Force.

Research & Acquisition (ARA) Work Force removed, organization restructured under the Air Traffic Organization (ATO).

Labor Relations

	BARGAINING UNITS	LABOR AGREEMENTS	EMPLOYEES REPRESENTED
Unions.....	45	22	37,644
AFGE.....	10	7	1,550
AFSCME (HQ).....	5	0	1,980
LIUNA.....	1	1	161
NAATS.....	1	1	2,074
NAGE.....	3	3	304
NATCA (AT).....	4	2	16,228
NATCA (AF).....	2	1	1,242
NATCA (Other).....	8	0	1,788
NFFE.....	3	2	743
PAACE.....	3	2	396
PASS (AF/AEA).....	1	1	7,204
PASS (AVN).....	1	1	326
PASS (AFS).....	2	1	3,494
PASS (AIR).....	1	0	154

AFGE	--American Federation of Government Employees
AFSCME	--American Federation of State, County, and Municipal Employees
LIUNA	--Laborer's International Union of North America
NAATS	--National Association of Air Traffic Specialists
NAGE	--National Association of Government Employees
NACTA	--National Air Traffic Controllers Association
NFFE	--National Federation of Federal Employees
PAACE	--Professional Association of Aeronautical Center Employees
PASS	--Professional Airway System Specialists

As of: 02/17/05

Source: AHL-400
(202) 267-3548

FAA Finances

(In Millions of Dollars)

	FY 2003 ¹	FY 2004 ²	FY 2005 ³
	Actual	Est.	Est.
Budget Authority (BA)			
Grants-In-Aid (Obligation Lim/Approp).....	3,378	3,380	3,500
Other Budget Authority.....	0	2	0
Research, Engineering, & Development.....	147	119	117
Facilities and Equipment.....	2,942	2,863	2,500
Operations.....	7,019	7,479	7,849
Midway Island	4	0	0
Aviation User Fees.....	20	0	6
Total.....	13,510	13,843	13,972
Obligations Incurred--Operations			
Appropriation by Line of Business			
Air Traffic Services (ATS).....	5,643	6,001	0
Research and Acquisitions (ARA).....	204	216	0
Air Traffic Organization (ATO).....	0	0	6,522
Regulation and Certification (AVR).....	832	871	905
Commercial Space Transportation (AST).....	11	12	12
Staff Offices (SO).....	82	181	410
Regions/Center Operations.....	79	86	0
Human Resources.....	68	75	0
Financial Services.....	48	49	0
Information Services/CIO.....	29	29	0
Emergency Response Fund.....	25	9	0
Total.....	7,021	7,529	7,849
Airport Grant Obligations (NET)			
Primary Airports & Cargo.....	1,060	1,019	1,024
States/Territories/Insular/Alaska Supp.....	680	680	707
Carryover Entitlements.....	355	336	336
Discretionary Fund.....	814	879	983
Small Airport Fund.....	386	380	380
Total.....	3,295	3,294	3,430
Total FAA Outlays.....	12,561	14,015	14,266
Trust Fund Receipts from Excise Taxes			
Passenger Ticket Tax.....	4,223	4,933	5,480
Passenger Flight Segment Tax.....	1,783	1,943	2,103
Waybill Tax.....	422	442	466
Fuel Tax	711	770	820
International Departure/Arrival Tax.....	1,331	1,435	1,570
Rural Airports Tax.....	67	75	82
Frequent Flyer Tax.....	147	153	156
Interest on Investment.....	591	620	412
Offsetting Collections.....	97	152	152
Total.....	9,372	10,523	11,241

Numbers may not add due to rounding. ¹ FY03 reflects a rescission of 0.65 percent; Operations includes \$3.5M supplemental for Midway Island. F&E BA excludes \$20M unobligated balance rescission. ² FY04 reflects a rescission 0.59 percent. F&E BA excludes \$30M unobligated balance rescission. Other BA shown is a direct appropriation for the extension of a runway at Fort Worth Alliance Airport. Operations BA reflects \$7.3M Working Capital Fund (WCF) rescission. ³ FY05 Operations BA includes \$2M for Bureau of Transportation Statistics. The Operations obligations by LOB reflect a proposed budget structure change -- ATS/ARA are combined into the new ATO, AVR/AST remain the same and all other LOBs are consolidated under SO.

Source: ABU-100
(202) 267-9070

FAA NAS Operational Facilities

(As of December 31)

	2004	2003	2002
NAS Operational Facilities¹	41,143	40,997	40,746
Communications.....	14,450	14,277	14,194
Automation.....	3,865	4,057	4,049
Environment.....	6,325	6,505	6,494
Navigation.....	11,120	11,131	11,104
Surveillance.....	1,886	1,894	1,871
Weather.....	3,497	3,133	3,034
Air Traffic Control Facilities²			
Air Route Traffic Control Center.....	21	21	21
Airport Traffic Control Tower.....	517	449	449
Flight Service ³	76	76	76
Flight Service Stations.....	16	16	16
Automated Flight Service Stations...	60	60	60

¹ Excludes non-federal facilities and foreign facilities.

² Included in NAS operational facilities.

³ Flight Service include Flight Service Stations and Automated Flight Service Stations.

As of: 12/31/04

Source: AOP-200
(202) 267-5288

FAA Officials

Washington Headquarters

Routing Symbol	Officials
AOA	Administrator Marion C. Blakey, 202-267-3111 David Mandell, Chief of Staff, 202-267-3111 Louise E. Maillett, Senior Counsel to AOA, 202-267-7417
ADA	Deputy Administrator Bobby Sturgell, 202-267-8111 Howard Swancy, Senior Advisor to ADA, 202-267-8111
ATO	Chief Operating Officer, Air Traffic Organization Russell G. Chew, 202-493-5602 Acquisition & Business Service Vice President, Dennis DeGaetano, 202-267-7222
*	Communications Services Vice President, Sandra M. Sanchez, 202-267-8507 Flight Services Vice President, James H. Washington, 202-385-7500
*	En Route & Oceanic Services Vice President, Richard Day (Actg.), 202-385-8501 Finance Services Vice President, Eugene D. Juba, 202-267-3022 Operations Planning Services Vice President, Norman T. Fujisaki (Actg.), 202-267-7111
*	System Operations Services Vice President, Michael A. Cirillo, 202-267-8558 Safety Services Vice President, William S. Davis (Actg.), 202-493-5882 Terminal Services Vice President, David B. Johnson, 202-385-8801 Technical Operations Services Vice President, Steven B. Zaidman, 202-267-8181
ABA	Assistant Administrator for Financial Services Ramesh K. Punwani, CFO, 202-267-9105 Deputy, John F. Hennigan, 202-267-8928
ABU	<i>Office of Budget</i> <i>Director, Alex Keenan, 202-267-8010</i>
AFC*	<i>Office of Financial Controls</i> <i>Director, Carl Burrus (Actg.), 202-267-9025</i>
AFM*	<i>Office of Financial Management</i> <i>Director, Tim Lawler, 202-267-7140</i>
ACR	Assistant Administrator for Civil Rights Fanny Rivera, 202-267-3254 Deputy, Barbara A. Edwards, 202-267-3264
AEP	Asst. Admin. for Aviation Policy, Planning & Environment Sharon L. Pinkerton, 202-267-3927 Deputy, Nancy LoBue, 202-267-7954

* Updated this issue

As of: 02/01/05

Source: APF-100

(202) 267-9946

FAA Officials

Washington Headquarters--(Cont)

Routing Symbol	Officials
AEE	<i>Office of Environment and Energy</i> <i>Director, Carl Bureson, 202-267-3576</i>
APO	<i>Office of Aviation Policy and Plans</i> <i>Director, Nan Shellabarger, 202-267-3274</i>
AGC	Chief Counsel Andrew B. Steinberg, 202-267-3222 <i>Deputy, James W. Whitlow, 202-267-3773</i>
AGI	Asst. Administrator for Government & Industry Affairs David Balloff, 202-267-3277 <i>Deputy, Daniel J. Hickey, 202-267-8211</i>
AHR	Asst. Administrator for Human Resource Management Ventris C. Gibson, 202-267-3456 <i>Deputy, Mary Ellen Dix, 202-267-3850</i> <i>Deputy for Labor Relations, Vacant, 202-267-3850</i>
AHA	<i>Office of the Accountability Board</i> <i>Director, Maria Fernandez-Greczmiel, 202-267-3065</i>
AHD	<i>Office of Corporate, Learning & Development</i> <i>Director Darlene Freeman, 202-267-9041</i>
AHL	<i>Office of Labor & Employee Relations</i> <i>Director, Melvin Harris, 202-267-3979</i>
AHP*	<i>Office of Personnel</i> <i>Director, Sue A. Engelhardt, 202-267-3850</i>
AIO*	Assistant Administrator for Information Services Daniel J. Mehan, CIO, 202-493-4570 <i>Deputy, Walter Iwanow, 202-493-4570</i>
AIS	<i>Office of Information Systems Security</i> <i>Director, Michael F. Brown, 202-267-7104</i>
APA	Assistant Administrator for Public Affairs Greg Martin, 202-267-3883 <i>Deputy, Laura Brown, 202-267-3883</i>
API	Asst. Administrator for International Aviation Douglas E. Lavin, 202-385-8900
ARC	Assistant Administrator for Region/Center Operations Ruth Leverenz, 202-267-7369 <i>Deputy, John R. Block, 202-267-7369</i>
ASH	Asst. Administrator for Security & Hazardous Materials Lynne A. Osmus, 202-267-7211 <i>Deputy, Claudio Manno (Actg.), 202-267-7211</i>
ADG	<i>Office of Hazardous Materials</i> <i>Director, William Wilkening, Jr., 202-267-9864</i>
AEO	<i>Office of Emergency Operations and Communications</i> <i>Director, Claudio Manno, 202-267-8979</i>
AHS*	<i>Office of Operations</i> <i>Director, Thomas D. Ryan (A), 202-267-7211</i>

FAA Officials

Washington Headquarters--(Cont.)

Routing Symbol	Officials
<i>AIN*</i>	<i>Office of Internal Security</i> <i>Director, Barbara Bilodeau (A), 202-366-9241</i>
<i>ASN*</i>	<i>Office of Investigations</i> <i>Director, Eddie Gibson (A), 202-366-1246</i>
ARP	Associate Administrator for Airports Woodie Woodward, 202-267-9471 <i>Deputy, Catherine M. Lang, 202-267-8738</i>
<i>AAS</i>	<i>Office of Airport Safety and Standards</i> <i>Director, David L. Bennett, 202-267-3053</i>
<i>APP</i>	<i>Office of Airport Planning & Programming</i> <i>Director, Dennis E. Roberts, 202-267-8775</i>
AST	Assoc. Adm. for Commercial Space Transportation Patricia Grace Smith, 202-267-7793 <i>Deputy, Dr. George C. Nield, 202-267-7848</i>
AVS*	Associate Administrator for Aviation Safety Nicholas A. Sabatini, 202-267-3131 <i>Deputy, Peggy Gilligan, 202-267-7804</i>
<i>AAI</i>	<i>Office of Accident Investigation</i> <i>Director, Steven B. Wallace, 202-267-9612</i>
<i>AAM</i>	<i>Office of Aviation Medicine</i> <i>Director, Jon L. Jordon, MD, 202-267-3535</i>
<i>AFS</i>	<i>Flight Standards Service</i> <i>Director, James Ballough, 202-267-8237</i>
<i>AIR</i>	<i>Aircraft Certification Service</i> <i>Director, John J. Hickey, 202-267-8235</i>
<i>AOV*</i>	<i>Office of Air Traffic Oversight</i> <i>Director, J. David Canoles, 202-267-5202</i>
<i>AQI</i>	<i>Quality and Integration</i> <i>Director, Vi Lipski, 202-493-5860</i>
<i>ARM</i>	<i>Office of Rulemaking</i> <i>Director, Anthony F. Fazio, 202-267-9677</i>

Duty Officer

(202) 267-3333

FAA Officials

Major Field Organizations

Routing Symbol	Officials
AAL	Alaskan Region, Regional Administrator Patrick N. Poe, 907-271-5645 222 West 7th Avenue, Box 14 Anchorage, Alaska 99513-7587 Duty Officer, 907-271-5936
ACE	Central Region, Regional Administrator Christopher Blum, 816-329-3050 901 Locust Kansas City, Missouri 64106 Duty Officer, 816-329-3000
ACT	William J. Hughes Technical Center, Director Anne Harlan, Ph.D., 609-485-6641 Atlantic City International Airport New Jersey 08405 Duty Officer, 609-485-6482
AEA	Eastern Region, Regional Administrator Arlene B. Feldman, 718-553-3000 1 Aviation Plaza 159-30 Rockaway Blvd. Jamaica, New York 11434-4809 Duty Officer, 718-553-3100
AGL	Great Lakes Region, Regional Administrator Cecelia Hunziker, 847-294-7294 2300 East Devon Avenue Des Plaines, Illinois 60018 Duty Officer, 847-294-8400
AMC	Mike Monroney Aeronautical Center, Director Lindy Ritz, 405-954-4521 6500 South MacArthur Oklahoma City, Oklahoma 73125 Duty Officer, 405-954-3583

FAA Officials

Major Field Organizations--(Cont.)

Routing Symbol	Officials
ANE	New England Region, Regional Administrator Amy Lind Corbett, 781-238-7020 12 New England Executive Park Burlington, Massachusetts 01803 Duty Officer, 781-238-7001
ANM	Northwest Mountain Region, Regional Administrator Douglas R. Murphy, 425-227-2001 1601 Lind Avenue, S.W. Renton, Washington 98055-4056 Duty Officer, 425-227-2000
ASO	Southern Region, Regional Administrator Carolyn Blum, 404-305-5000 1701 Columbia Avenue College Park, Georgia 30337 Duty Officer, 404-305-5180
ASW	Southwest Region, Regional Administrator Ava L. Wilkerson, 817-222-5001 2601 Meacham Blvd. Ft. Worth, Texas 76137-4298 Duty Officer, 817-222-5006
AWP	Western-Pacific Region, Regional Administrator William C. Withycombe, 310-725-3550 15000 Aviation Boulevard Hawthorne, California 90261 Duty Officer, 310-725-3300

FAA Officials

International Area Offices

Routing Symbol	Officials
AEU	Europe, Africa, & Middle East Area Office, Director Paul Feldman, 011-322-508-2700 American Embassy, Brussels PSC 82 Box 002 APO AE 09724-1011
ALC	Latin America & Caribbean Area Office, Director Joaquin Archilla, 305-716-3300 8600 NW 36th Street Miami, FL 33166
APC	Asia-Pacific Area Office, Director Elizabeth E. Erickson, 011-65-6540-4114 American Embassy 27 Napier Road Singapore 258508

FEDERAL AVIATION ADMINISTRATION

FLIGHT PLAN 2005-2009

INCREASED SAFETY

Goal: *Achieve the lowest possible accident rate and constantly improve safety.*

Objectives:

1. Reduce the commercial airline fatal accident rate.
2. Reduce the number of fatal accidents in general aviation.
3. Reduce accidents in Alaska.
4. Reduce the risk of runway incursions.
5. Measure the safety of the United States civil aviation system with a composite index.
6. Ensure the safety of commercial space launches.
7. Enhance the safety of FAA's air traffic systems

Performance Targets:

Obj. 1 Reduce the airline fatal accident rate by 80% from the 1994-1996 baseline to a three-year rolling average rate of 0.010 per 100,000 departures by FY 2007.

Obj. 1 Reduce the three-year rolling average fatal accident rate below 0.010 by fiscal year (FY) 2009.

Obj. 2 By FY 2009, reduce the number of general aviation and nonscheduled Part 135 fatal accidents to no more than 319 (from 385, which represents the average number of fatal accidents for the baseline period of 1996-1998).

Obj. 3 By FY 2009, reduce accidents in Alaska for general aviation and all Part 135 operations from 2000-2002 average of 130 accidents per year to no more than 99 accidents per year.

As of 10/01/04

Source: APO-120
(202) 267-3220

INCREASED SAFETY Performance Targets (Continued)

Obj. 4 By FY 2009, reduce the number of Categories A and B (most serious) runway incursions to no more than 27, equivalent to a rate of 0.390 per million operations.

Obj. 5 By FY 2006, implement a single, comprehensive index that provides a meaningful measure of the safety performance of the U.S. civil aviation system

Obj. 6 No fatalities, serious injuries, or significant property damage to the uninvolved public during licensed space launch and reentry activities.

Obj. 7 By 2009, reduce the number of Category A and B (most serious) operational errors to no more than 563, equivalent to a rate of 3.15 per million activities

Obj. 7 Apply safety risk management to at least 30 significant changes in the NAS.

GREATER CAPACITY

Goal: *Work with local governments and airspace users to provide capacity in the United States airspace system that meets projected demand in an environmentally sound manner.*

Objectives:

1. Increase capacity to meet projected demand.
2. Increase or improve airspace capacity in the eight major metropolitan areas and corridors that most affect total system delay: For FY 2005, those areas are: New York, Philadelphia, Boston, Chicago, Washington/Baltimore, Atlanta, Los Angeles Basin, and San Francisco.
3. Increase on-time performance of scheduled carriers.
4. Address environmental issues associated with capacity enhancements.

Performance Targets:

Obj. 1 Achieve an average daily airport capacity of 104,338 arrivals and departures per day by 2009 at the Operational Evolution Plan (OEP) airports.

Obj. 1 Open as many as seven new runways, increasing the annual service volume of the 35 OEP airports by at least 1% annually, measured as a five-year moving average, through FY 2009.

Obj. 1 Sustain adjusted operational availability at 99% for the reportable facilities that support the 35 OEP airports.

Obj. 2 Achieve an average daily airport capacity for the eight major metropolitan areas at 44,428 arrivals and departures per day by 2009.

Obj. 3 Through FY 2009, achieve an 86.9% for all flights arriving at the 35 OEP airports, equal to or less than 15 minutes late due to NAS related delays.

GREATER CAPACITY Performance Targets (Continued)

Obj. 3 Beginning in FY 2005, increase number of oceanic en-route altitude change requests that are granted through the end of FY 2009 to 80%.

Obj. 4 Reduce the number of people exposed to significant noise by 1% per year through FY 2009, as measured by a three-year moving average, from the three-year average for calendar year 2000-2002.

Obj. 4 Improve aviation fuel efficiency per revenue plane-mile by 1% per year through 2009, as measured by a three-year moving average, from the three-year average for calendar year 2000-2002.

INTERNATIONAL LEADERSHIP

Goal: *increase the safety and capacity of the global civil aerospace system in an environmentally sound manner.*

Objectives:

1. Promote improved safety and regulatory oversight in cooperation with bilateral, regional, and multilateral aviation partners.
2. Promote seamless operations around the globe in cooperation with bilateral, regional, and multilateral aviation partners.

Performance Targets:

Obj.1 Advance U.S. aviation safety leadership in developing regions by significantly increasing safety infrastructure in 10 priority countries by 2009 through implementation of model law and regulations for safety oversight, extensive technical assistance and training activity, and concluding bilateral agreements.

Obj.1 Conclude four new or expanded bilateral agreements with current partners.

Obj.1 Secure a yearly increase of 20% in intellectual and financial assistance for international aviation activities from the United States and international government organizations, multilateral bank, and industry.

Obj.1 Promote the creation of four new regional aviation authorities or organizations capable of meeting globally accepted safety standards.

Obj.2 Ensure that international environmental standards, recommended practices, and guidance material adopted by ICAO are globally and uniformly applied, reflect the best available technology that can be integrated into the fleet, provide real environmental benefit, are economically sound, and take interdependencies between environmental parameters into account.

ORGANIZATIONAL EXCELLENCE

GOAL: *Ensure the success of the FAA's mission through stronger leadership, a better-trained and safer workforce, enhanced cost-control measures, and improved decision-making based on reliable data.*

Objectives:

1. Make the organization more effective with stronger leadership, increased commitment of individual workers to fulfill organization-wide goals, and a better prepared, better trained, safer, diverse workforce.
2. Control costs while delivering quality customer service.
3. Make decisions based on reliable data to improve our overall performance and customer satisfaction.

Performance Targets:

Obj. 1 Increase Employee Attitude Survey scores in the areas of management effectiveness and accountability by at least 5%.

Obj. 1 Directly relate 100% all employee performance plans to FAA strategic goals and their organization's performance plans.

Obj. 1 Reduce the time it takes to fill mission-critical positions by 20% over the FY 2003 baseline.

Obj. 2 Develop and implement a centrally managed and highly visible cost control program to lead the agency in reducing costs. Each FAA organization will contribute at least one cost reduction activity each year to its Business Plan with measurable, significant cost savings.

Obj. 2 Close out 85% of eligible cost reimbursable contracts during each fiscal year.

Obj. 3 By FY 2009, 90% of major system acquisition investments are within 10% of budget.

Obj. 3 By FY 2009, 90% of major system acquisition investments are on schedule.

ORGANIZATIONAL EXCELLENCE Performance Targets (Continued)

Obj. 3 Achieve 90% of all performance targets in the Flight Plan.

Obj. 3 Increase agency scores on the American Customer Satisfaction Index.

Obj. 3 Achieve zero cyber security events that significantly disable or degrade FAA services.

FAA VALUES

Safety is our passion.

We are world leaders in aerospace safety.

Quality is our trademark.

We serve our country, our customers, and each other.

Integrity is our character.

We do the right thing, even if no one is looking.

People are our strength.

We treat each other as we want to be treated.



FAA MISSION

To provide the safest, most efficient aerospace system in the world.

FAA VISION

To improve continuously the safety and efficiency of aviation, while being responsive to our customers and accountable to the public

2006

January

1	2	3	4	5	6	7
8	9	10	11	12	13	14
15	16	17	18	19	20	21
22	23	24	25	26	27	28
29	30	31				

March

			1	2	3	4
5	6	7	8	9	10	11
12	13	14	15	16	17	18
19	20	21	22	23	24	25
26	27	28	29	30	31	

May

	1	2	3	4	5	6
7	8	9	10	11	12	13
14	15	16	17	18	19	20
21	22	23	24	25	26	27
28	29	30	31			

July

						1
2	3	4	5	6	7	8
9	10	11	12	13	14	15
16	17	18	19	20	21	22
23	24	25	26	27	28	29
30	31					

September

					1	2
3	4	5	6	7	8	9
10	11	12	13	14	15	16
17	18	19	20	21	22	23
24	25	26	27	28	29	30

November

			1	2	3	4
5	6	7	8	9	10	11
12	13	14	15	16	17	18
19	20	21	22	23	24	25
26	27	28	29	30		

February

			1	2	3	4
5	6	7	8	9	10	11
12	13	14	15	16	17	18
19	20	21	22	23	24	25
26	27	28				

April

						1
2	3	4	5	6	7	8
9	10	11	12	13	14	15
16	17	18	19	20	21	22
23	24	25	26	27	28	29
30						

June

				1	2	3
4	5	6	7	8	9	10
11	12	13	14	15	16	17
18	19	20	21	22	23	24
25	26	27	28	29	30	

August

		1	2	3	4	5
6	7	8	9	10	11	12
13	14	15	16	17	18	19
20	21	22	23	24	25	26
27	28	29	30	31		

October

1	2	3	4	5	6	7
8	9	10	11	12	13	14
15	16	17	18	19	20	21
22	23	24	25	26	27	28
29	30	31				

December

					1	2
3	4	5	6	7	8	9
10	11	12	13	14	15	16
17	18	19	20	21	22	23
24	25	26	27	28	29	30
31						

2005

January

						1	
2	3	4	5	6	7	8	
9	10	11	12	13	14	15	
16	17	18	19	20	21	22	
23	24	25	26	27	28	29	
30	31						

March

		1	2	3	4	5	
6	7	8	9	10	11	12	
13	14	15	16	17	18	19	
20	21	22	23	24	25	26	
27	28	29	30	31			

May

1	2	3	4	5	6	7	
8	9	10	11	12	13	14	
15	16	17	18	19	20	21	
22	23	24	25	26	27	28	
29	30	31					

July

					1	2	
3	4	5	6	7	8	9	
10	11	12	13	14	15	16	
17	18	19	20	21	22	23	
24	25	26	27	28	29	30	
31							

September

				1	2	3	
4	5	6	7	8	9	10	
11	12	13	14	15	16	17	
18	19	20	21	22	23	24	
25	26	27	28	29	30		

November

		1	2	3	4	5	
6	7	8	9	10	11	12	
13	14	15	16	17	18	19	
20	21	22	23	24	25	26	
27	28	29	30				

February

		1	2	3	4	5	
6	7	8	9	10	11	12	
13	14	15	16	17	18	19	
20	21	22	23	24	25	26	
27	28						

April

					1	2	
3	4	5	6	7	8	9	
10	11	12	13	14	15	16	
17	18	19	20	21	22	23	
24	25	26	27	28	29	30	

June

			1	2	3	4	
5	6	7	8	9	10	11	
12	13	14	15	16	17	18	
19	20	21	22	23	24	25	
26	27	28	29	30			

August

	1	2	3	4	5	6	
7	8	9	10	11	12	13	
14	15	16	17	18	19	20	
21	22	23	24	25	26	27	
28	29	30	31				

October

						1	
2	3	4	5	6	7	8	
9	10	11	12	13	14	15	
16	17	18	19	20	21	22	
23	24	25	26	27	28	29	
30	31						

December

				1	2	3	
4	5	6	7	8	9	10	
11	12	13	14	15	16	17	
18	19	20	21	22	23	24	
25	26	27	28	29	30	31	