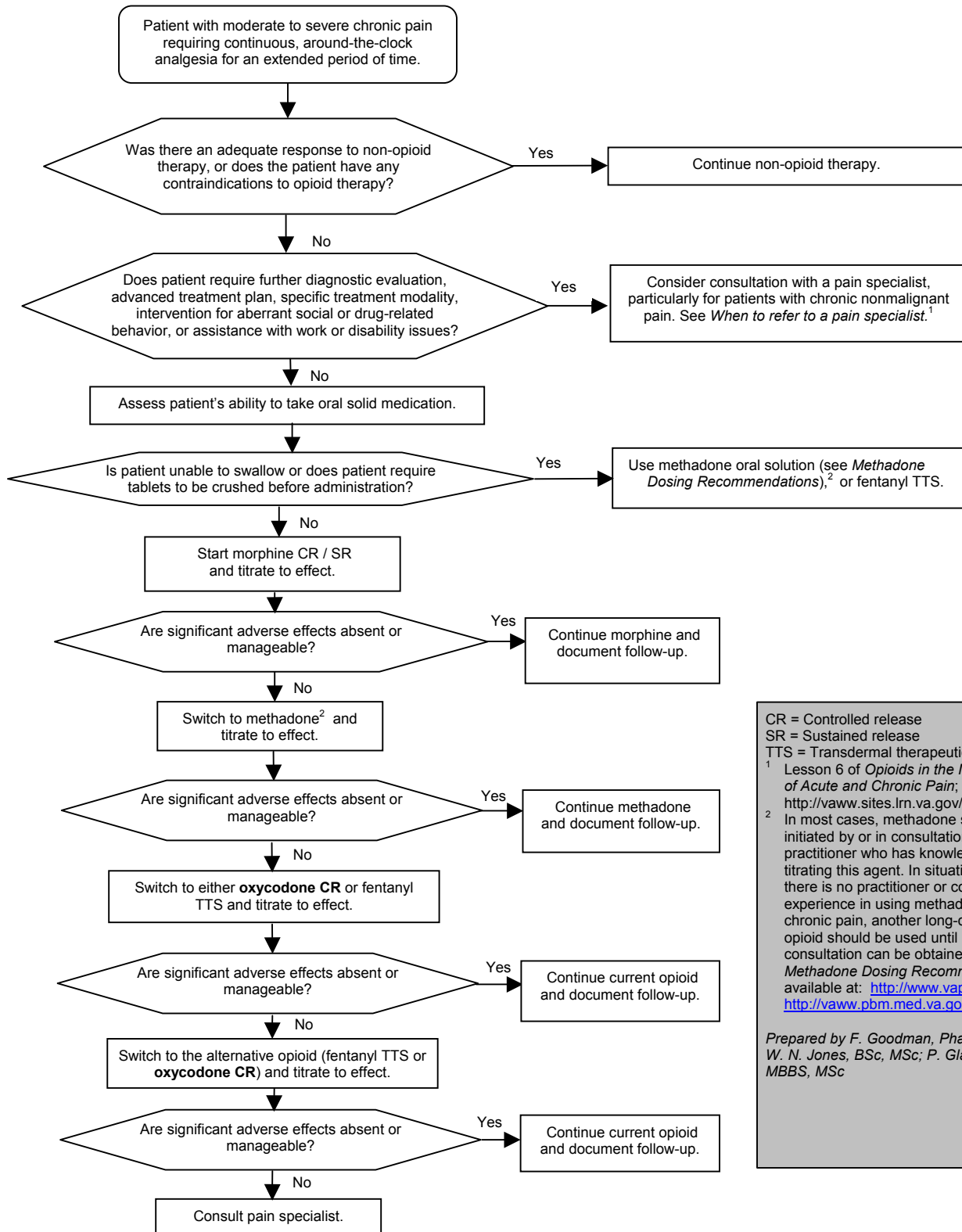


Treatment Algorithm Criteria for Use of Controlled-release Oxycodone

For further details, see *Criteria for Use of Controlled-release Oxycodone CR*;
available at: <http://www.vapbm.org> or <http://vaww.pbm.med.va.gov>



CR = Controlled release
SR = Sustained release
TTS = Transdermal therapeutic system

¹ Lesson 6 of *Opioids in the Management of Acute and Chronic Pain*; available at: <http://vaww.sites.lrn.va.gov/pain/opioids/>.

² In most cases, methadone should be initiated by or in consultation with a practitioner who has knowledge of titrating this agent. In situations where there is no practitioner or consultant with experience in using methadone for chronic pain, another long-duration opioid should be used until such consultation can be obtained. See *Methadone Dosing Recommendations*; available at: <http://www.vapbm.org> or <http://vaww.pbm.med.va.gov>.

Prepared by F. Goodman, PharmD, BCPS; W. N. Jones, BSc, MSc; P. Glassman, MBBS, MSc