

# SFERPM FY97-FY99: Funded Research

## Atmospheric Science



### Frank Marks and Paul Willis

*Monitoring and Evaluation of Radar Measured Rainfall Over Florida Bay and the Everglades*

### Craig Mattocks

*Simulations of Regional Climatic Patterns which Impact the Florida Bay Water Cycle*

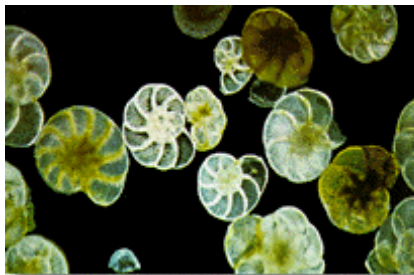
### Ogden et al.

*A Workplan for Continued Operation, Maintenance, and Enhancement of the SEAKEYS Environmental Monitoring Network: Florida Bay and Florida Keys National Marine Sanctuary*  
(John Ogden, Sandra Vargo, and James Hendee)

## Coral Reef Monitoring



## Earth Science



### Nelsen et al.

*The Sediment Record as a Monitor of Natural and Anthropogenic Changes in the Lower Everglades/Florida Bay Ecosystem: A High Resolution Study*  
(Terry Nelsen, Patricia Blackwelder, Harold Wanless, John Trefry, Peter Swart, and Lenore Tedesco)

### George Jackson and Adrian Burd

*Development of Models to Describe Ecosystem Interactions in Florida Bay*

## Ecological Modeling



## Marine Chemistry



### **Frank Millero and Jia-Zhong Zhang**

*The Role of Suspended Calcium Carbonate in the Phosphorus Cycle in Florida Bay*

### **Burnett et al.**

*The Role of Groundwater Nutrient Fluxes in the Nutrient Budget of Florida Bay*  
(William Burnett, Jeffrey Chanton, Thomas Juster, Larry Brand, and Zafer Top)

### **Gary L. Hitchcock and Gabriel Vargo**

*Circulation, Nutrient Influx, and Phytoplankton Growth in Florida Bay*

### **Szmant et al.**

*Pools and Fluxes of Nutrients in Florida Bay Sediments, and Biological and Chemical Barriers to Flux at the Sediment-Water Interface*  
(Alina Szmant, Larry Brand, Paul Carlson, and Laura Yarbro)

### **Pai-Yei Whung and Tilden Meyers**

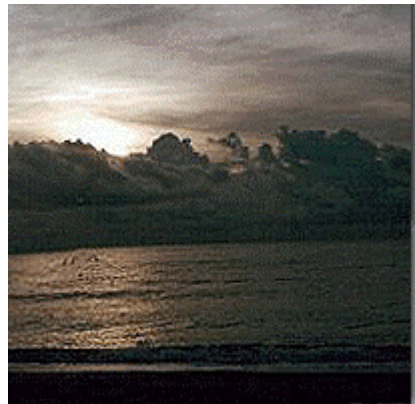
*Atmospheric Deposition of Nitrogen and Phosphorus*

## Physical Oceanography

### **Aikman et al.**

*Regional Boundary Conditions for Florida*

## Nutrients





*Bay*  
(Frank Aikman III, William O'Connor, and George Mellor)

**Lee et al.**

*Circulation and Exchange of Florida Bay and the Connecting Waters of the Gulf of Mexico and Florida Keys*  
(Thomas Lee, Elizabeth Johns, and Doug Wilson)

**Ned Smith**

*Field Observations to Initialize and Verify Computer Simulations of Florida Bay Circulation*

**Plankton**



**Dagg et al.**

*Trophic Pathways in the Pelagic Environment of Florida Bay*  
(Michael Dagg, Gary Kleppel, and Peter Ortner)

**Recruitment**  
**Dyn./Fisheries**



**Don Hoss and Gordon Thayer**

*Fish Recruitment, Growth, and Habitat Use in Florida Bay*

---

For more detailed project descriptions, please click on the highlighted investigator(s).

For a statement of research goals, click on the adjacent picture title.

---

Last **UPDATED** on 11/21/00