



# Gulf of Mexico Updates

OCS Policy Committee Meeting  
New Orleans—November 21, 2002



by Chris C. Oynes

**MMS**

# **Gulf of Mexico Regional Updates**

- ✓ **New World Production Record**
- ✓ **Isidore and Lili Storm Impacts**
- ✓ **Exploration Plans Filed in Eastern Gulf**
- ✓ **Wind Energy~Nantucket Sound**
- ✓ **Western Gulf Sale 184: Seismic Stipulation**
- ✓ **New Sperm Whale Study**

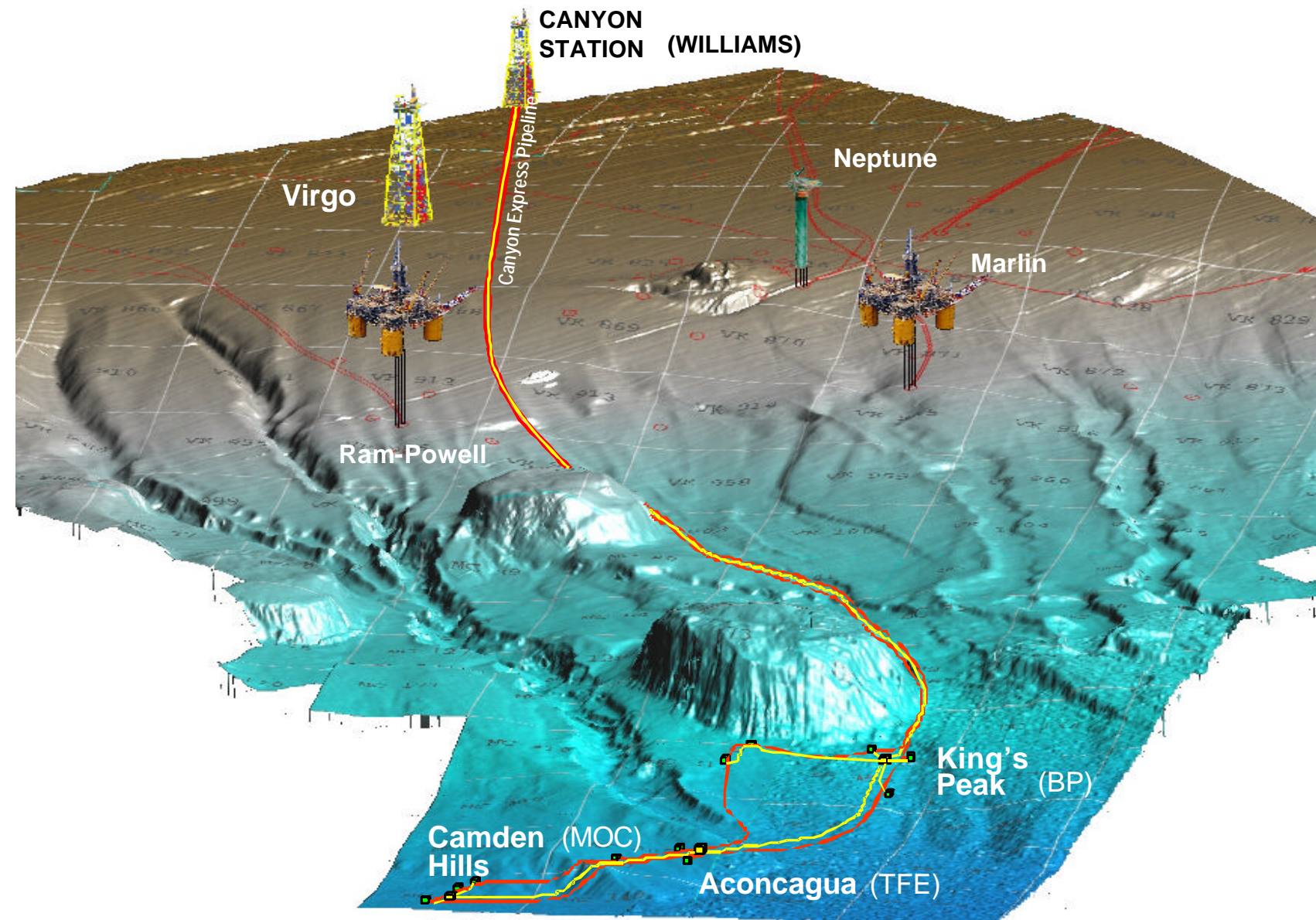
# New Deepwater Production Record



## Production Record

- On October 11, 2002 a new world deepwater production record was achieved in the Gulf of Mexico
- Canyon Express Project began production
  - ✓ 3 subsea developments
    - Camden Hills (7,209 feet)
    - Aconcagua
    - Kings Peak
  - ✓ Gas production tied back to a shallow water platform
  - ✓ 500 mm cfd

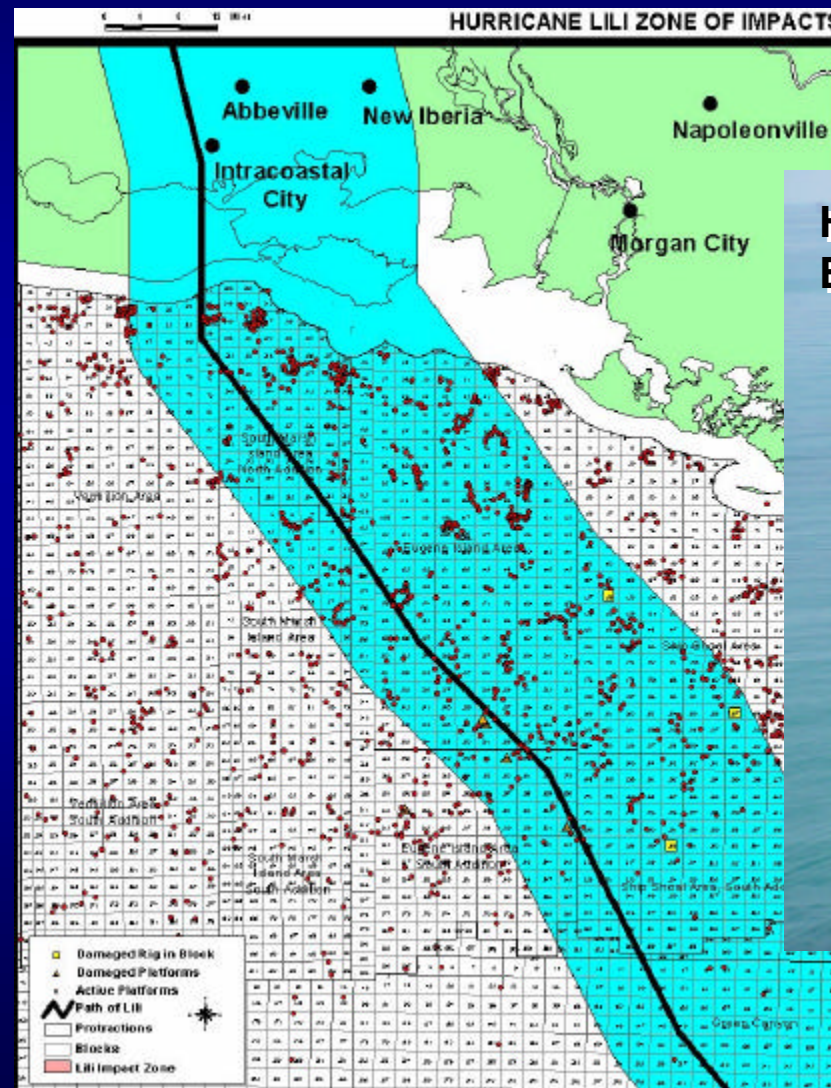
# CANYON EXPRESS PROJECT GULF OF MEXICO (USA)



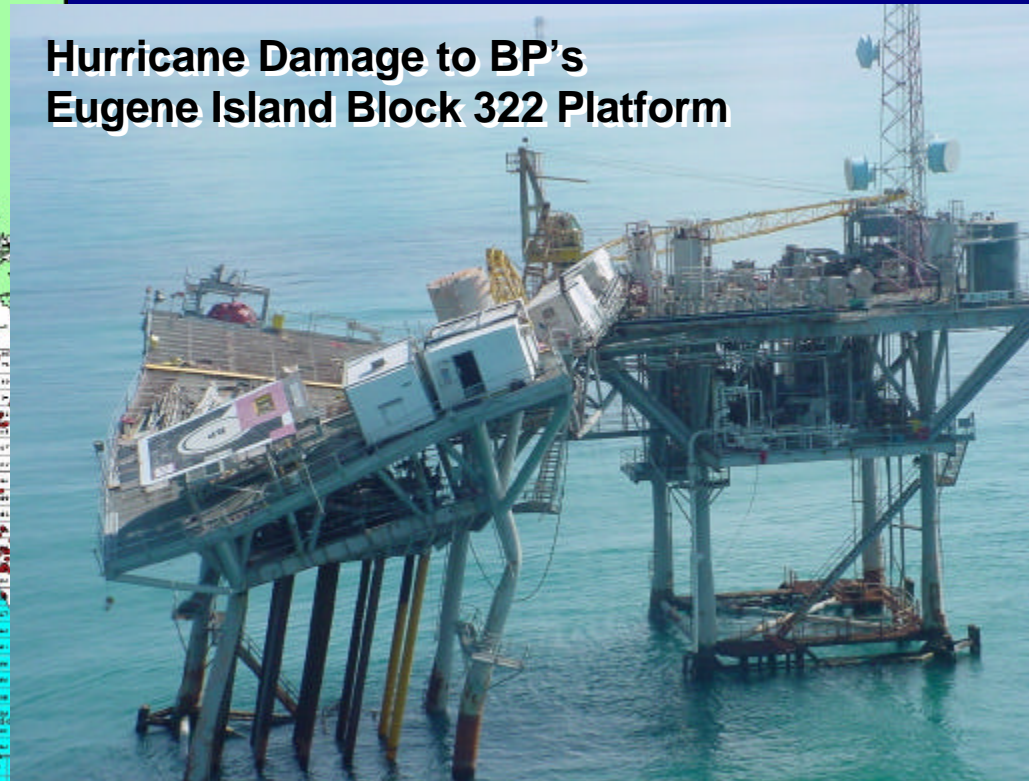
# Isidore and Lili Storm Impacts



# Isidore and Lili Storm Impacts



**Hurricane Damage to BP's Eugene Island Block 322 Platform**



# Isidore and Lili Storm Impacts

## *Tropical Storm Isidore Facts:*

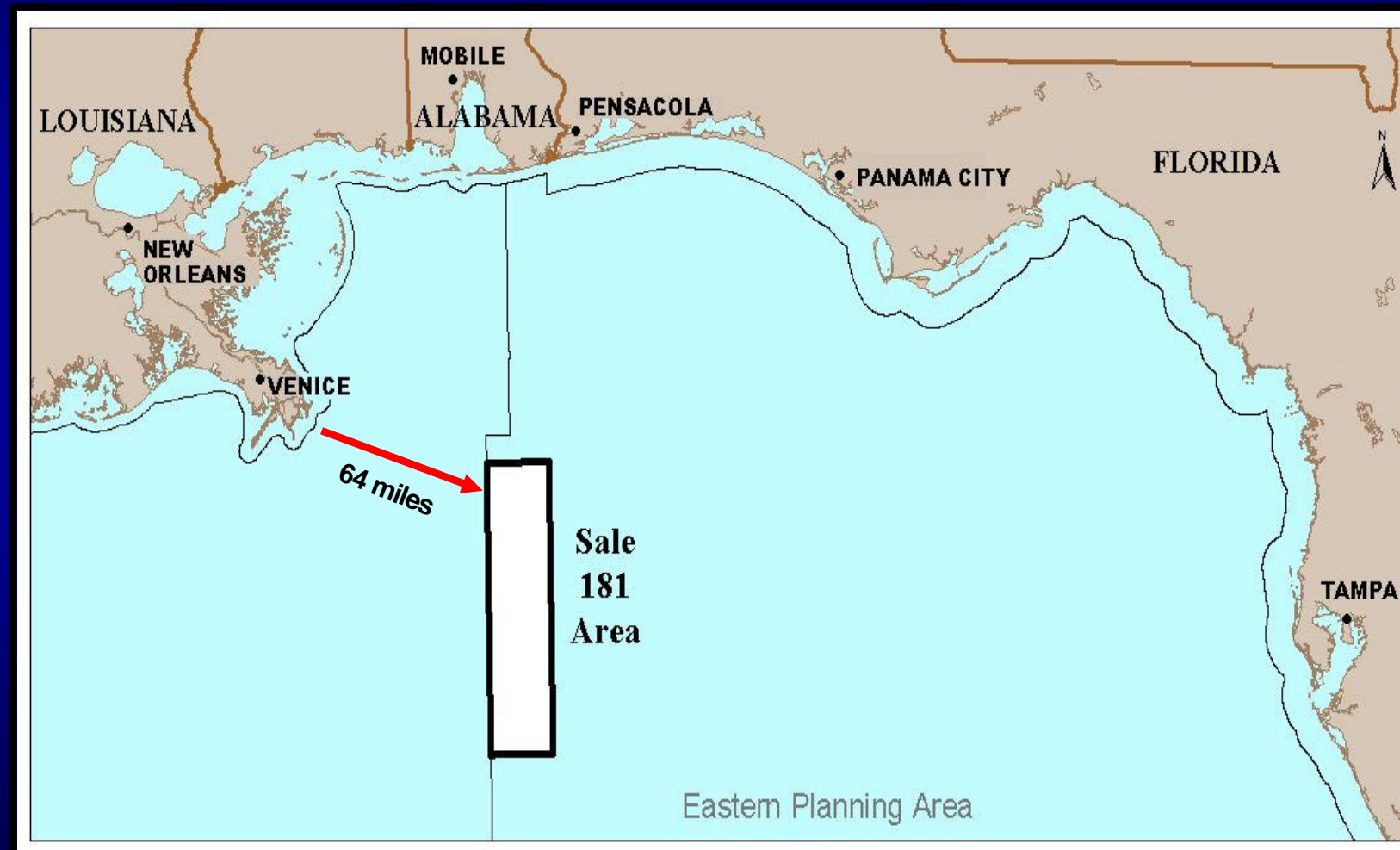
- 3-day shut down of operations
- Gulfwide--95% of crude oil and 60% of the natural gas production was shut down

## *Hurricane Lili Facts:*

- up to a Category 4 hurricane ~ sustained winds of over 145 mph
- Gulfwide--95% of crude oil and 75% of the natural gas production was shut down
- no fatalities; no fires; no major pollution events; 25,000 offshore personnel evacuated
- Major Damage:
  - ✓ 6 of 800 platforms
  - ✓ 4 of 99 drilling rigs

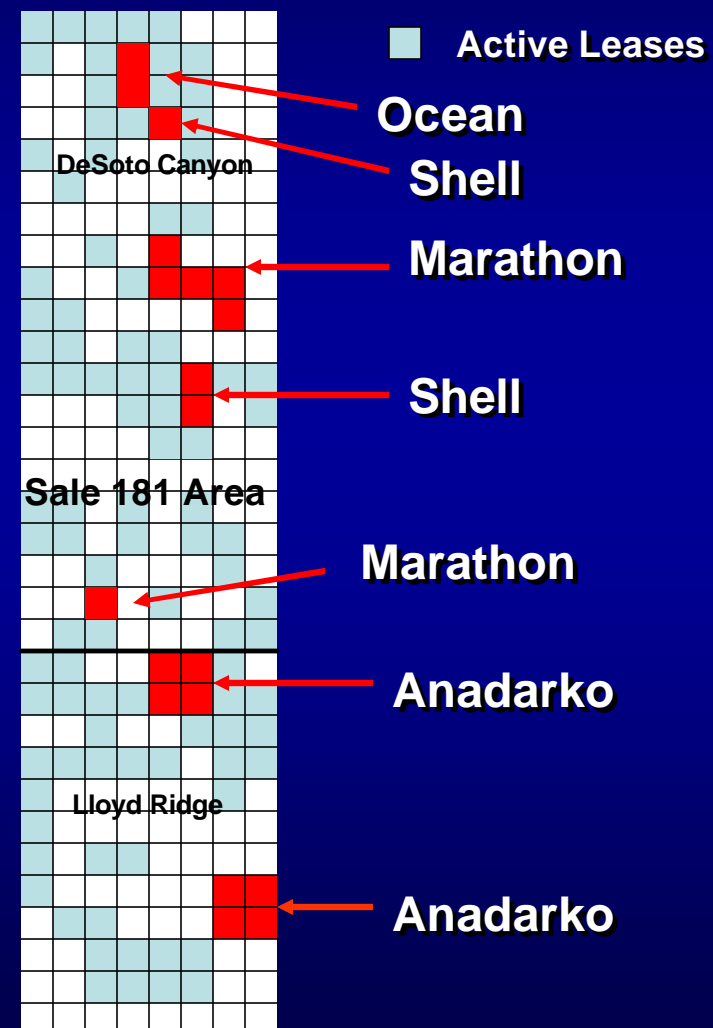


# Exploration Plans Filed in the Eastern Gulf of Mexico



# Exploration Plans Filed in the Eastern Gulf

- 7 Exploration Plans have been filed by:
  - ◆ Marathon
    - ◆ Anadarko
    - ◆ Shell
    - ◆ Ocean Energy
- 3 EP's have been sent to affected states for CZM consistency review

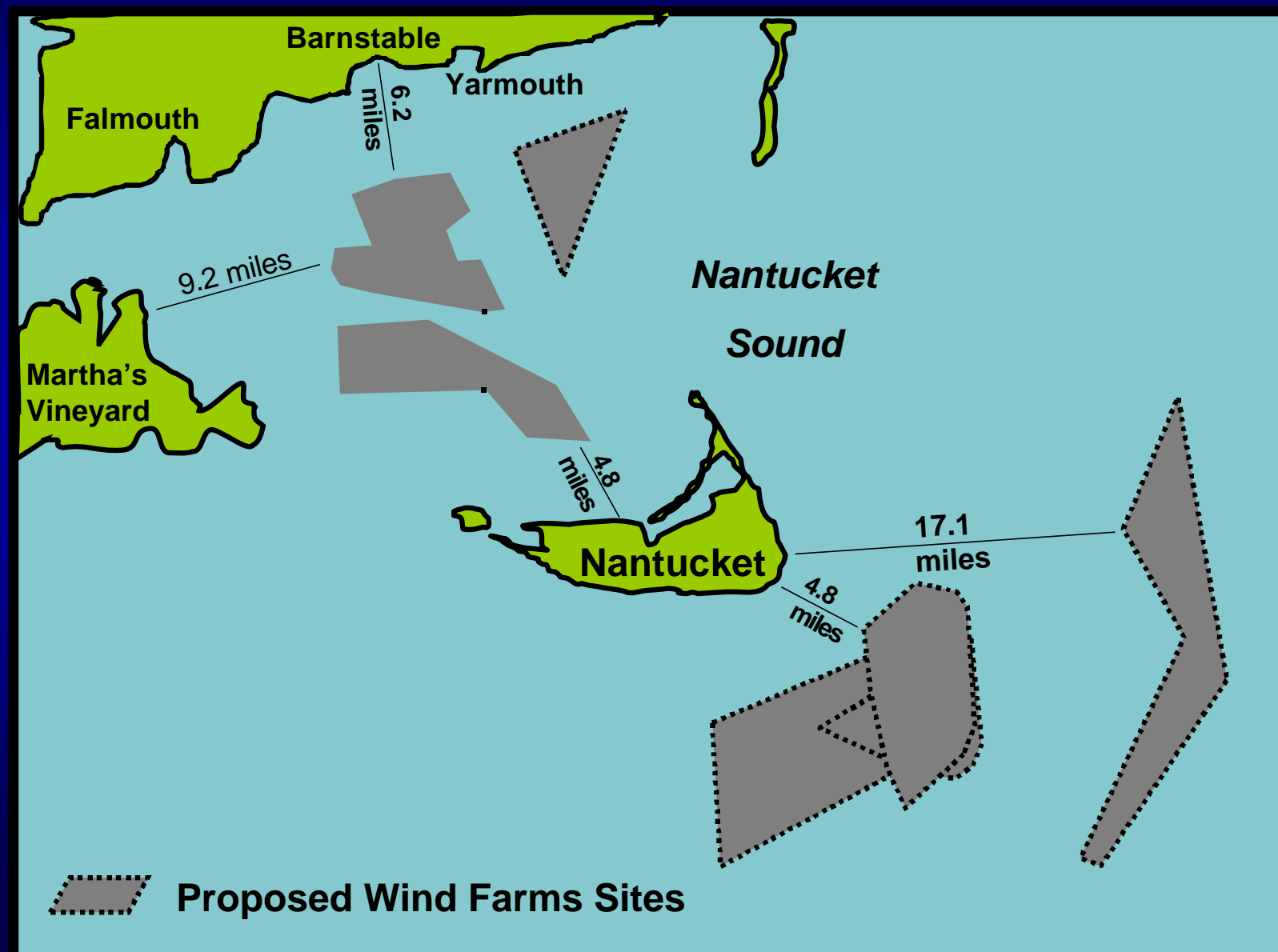


## Wind Energy~Nantucket Sound



- Cape Wind Associates have filed plans to build the country's first offshore commercial wind-powered electricity generator off Massachusetts
- 170 giant wind turbines (40 stories high), located about 6 miles from Hyannis, Massachusetts
- Peak output = 420 megawatts of power

# Wind Energy ~ Nantucket Sound



## **Wind Energy~Nantucket Sound Status**

- **In September 2002, a Superior Court Judge issued a temporary restraining order—not allowing Cape Wind to install a 200 ft data tower in Nantucket Sound.**
- **In October 2002, a U.S. District Judge failed to issue an injunction on the construction. Litigation is pending.**

# Western Gulf Sale 184: Seismic Stipulation

○ Leading up to the Sale NOAA Fisheries issued a Biological Opinion to MMS that called for measures to protect sperm whales and marine sea turtles:

- ✓ minimizing marine debris,
- ✓ notifying/observing vessel strikes on listed species, and
- ✓ ceasing seismic operations when whales are in a 180 db impact zone

# **Western Gulf Sale 184: Seismic Stipulation**

**In response to NOAA's Biological Opinion, MMS adopted requirements in the lease and issued NTL (2002-G07):**

- MMS will require that all seismic surveys employ mandatory mitigation measures to include the use of a 180 dB impact zone based on the appropriate depth, visual observers and ramp-up procedures.**
- Seismic operations must immediately cease when a sperm whale is detected within the 180 dB impact zone.**
- Ramp-up procedures and seismic surveys may be initiated only during daylight.**

# **New MMS Study Sperm Whales & Seismic**

- **MMS signed a Cooperative Agreement with the Texas A&M Research Foundation (TAMRF) in June 2002**
- **TAMRF to conduct the Sperm Whale Seismic Study (SWSS)**
- **funding from MMS, Office of Naval Research and the International Association of Geophysical Contractors (IAGC)**



# New Sperm Whale Seismic Study



## experiments included:

- ✓ deploying satellite tags
- ✓ collecting phys-o data
- ✓ surveying for sperm whales
- ✓ performing biopsies (DNA)
- ✓ photographing sperm whale flukes (photo-ID)
- ✓ recording surface behavior

JONATHAN GORDON for SWSS © 2002

**MMS**

# **New Sperm Whale Seismic Study**

- **SWSS results to be used to:**
  - ✓ **evaluate seismic survey effects on sperm whales**
  - ✓ **determine whether some areas of the Gulf represent preferred use locations for whales**
  - ✓ **determine what actions would mitigate adverse effects on these whales**
- **initial results to be presented at the MMS Information Transfer Meeting in New Orleans in January 2003**
- **final report by TAMRF scheduled in early 2005**