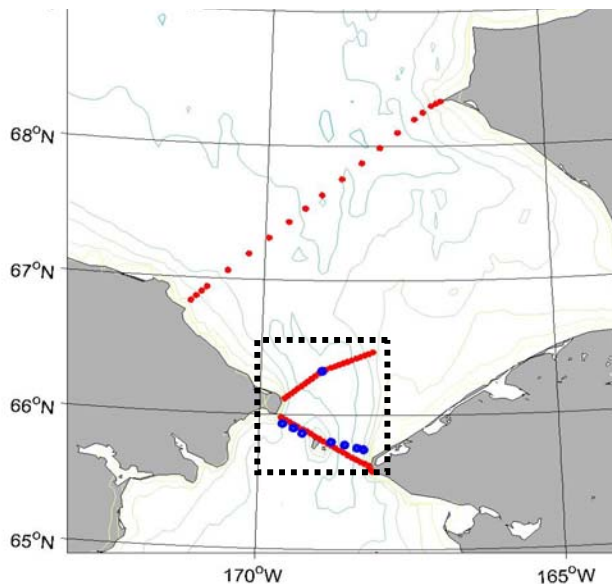


## Bering Strait Moorings to be deployed in 2008

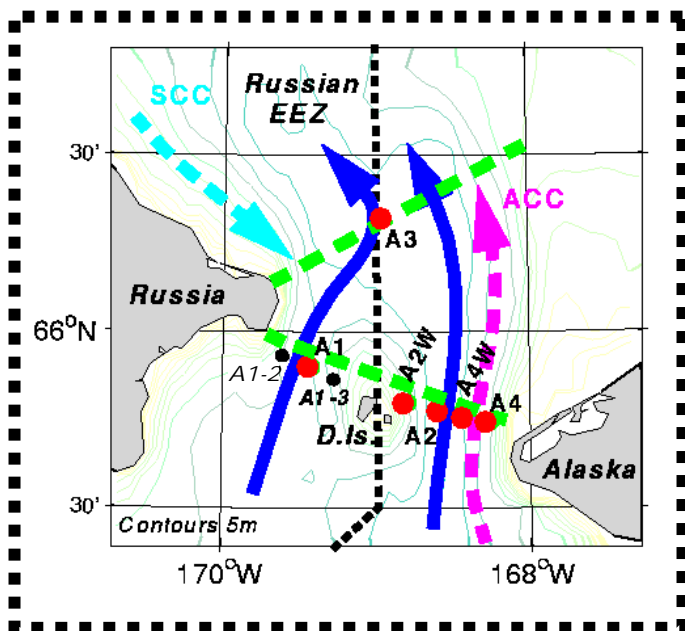


Schematic of Bering Strait region showing topography contoured at 10m intervals.

- Red (small) dots mark CTD locations.
- Blue (larger) dots mark mooring locations

Detail of Bering Strait Region, schematically marking:

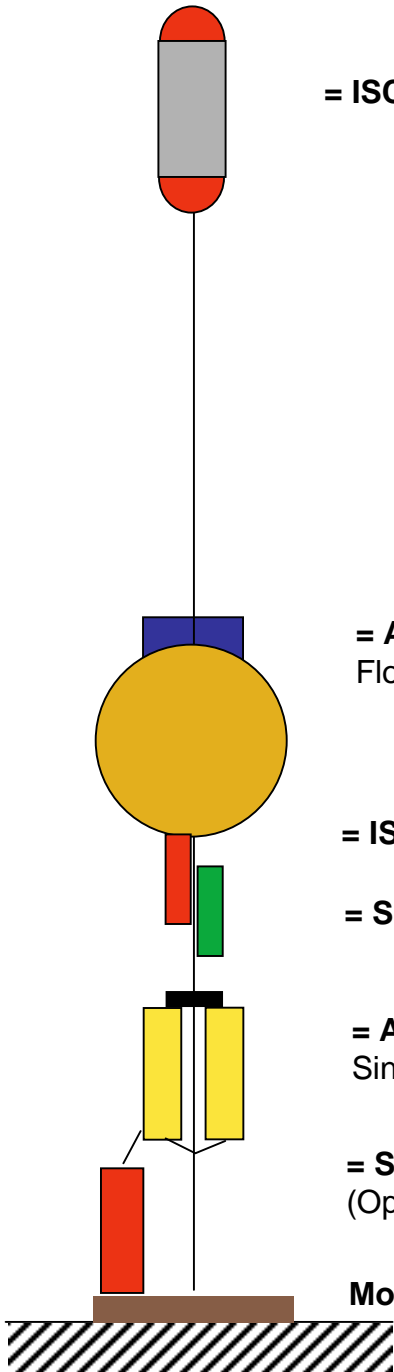
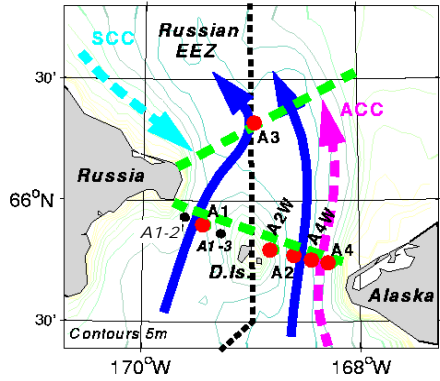
- major currents (SCC = Siberian Coastal Current; ACC = Alaskan Coastal Current)
- mooring locations – black and red dots. Red (larger) dots indicate moorings with upper layer temperature-salinity sensors - A1, A3, A2W, A2, A4W, and A4. Black (smaller) dots indicate conventional moorings – A1-2 and A1-3. D.Is. = Diomedede Islands



# Mooring Details – Schematic 1:8

(within type, instruments may vary - see text)

## A1-1 – RUSSIAN EEZ



= ISCAT, at ~ 15m depth

= ADCP, at ~ 45m depth

Floatation either sphere as shown or set of 8 floats (not shown).

= ISCAT Logger, at ~ 45m depth (see ISCAT)

= SBE37 at ~ 46m depth

= ACOUSTIC RELEASES, at ~ 47m depth,  
Single or Double releases may be used.

= SBE PRESSURE GAUGE, in anchor at bottom  
(Optional location)

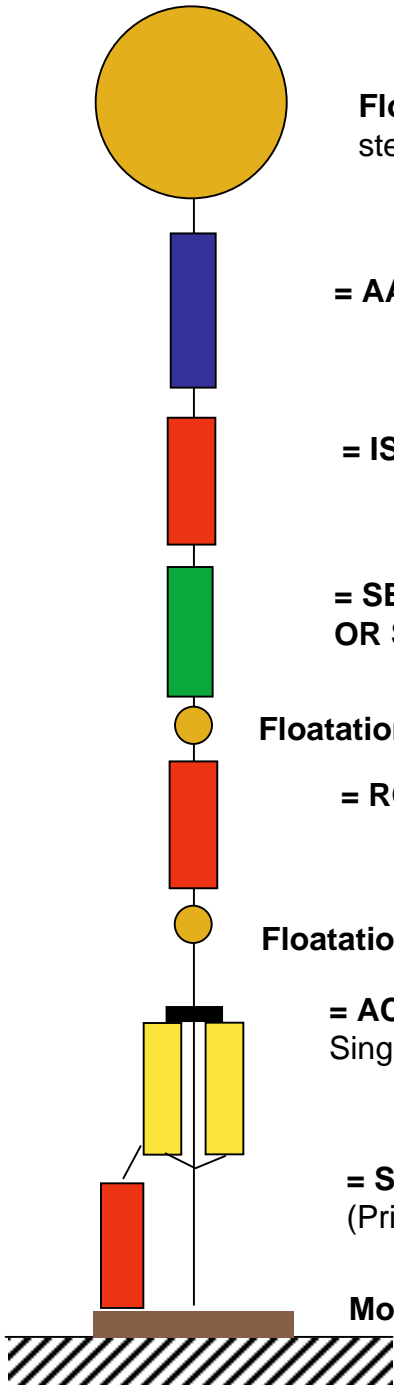
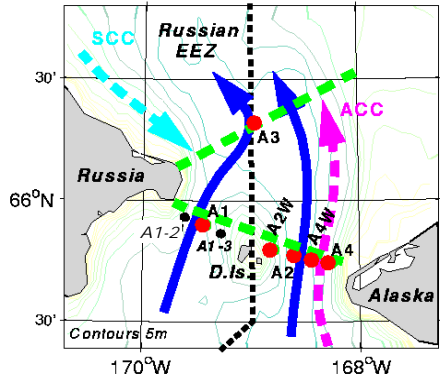
Mooring Anchor

Mooring line may be line, wire or chain, and may contain extra floatation

# Mooring Details – Schematic 2:8

(within type, instruments may vary - see text)

## A1-2 – RUSSIAN EEZ



### Floatation

steel float or syntactic foam float

= AARI Current Meter and CTD, at ~ 31m

= ISUS , at ~ 38m depth

= SBE16plus with optics at ~ 46m depth  
OR SBE 37

### Floatation

= RCM-9 with turb (or RCM7) at ~ 42m depth

### Floatation

= ACOUSTIC RELEASES, at ~ 45m depth,  
Single or Double releases may be used.

= SBE PRESSURE GAUGE, in anchor at bottom  
(Primary location)

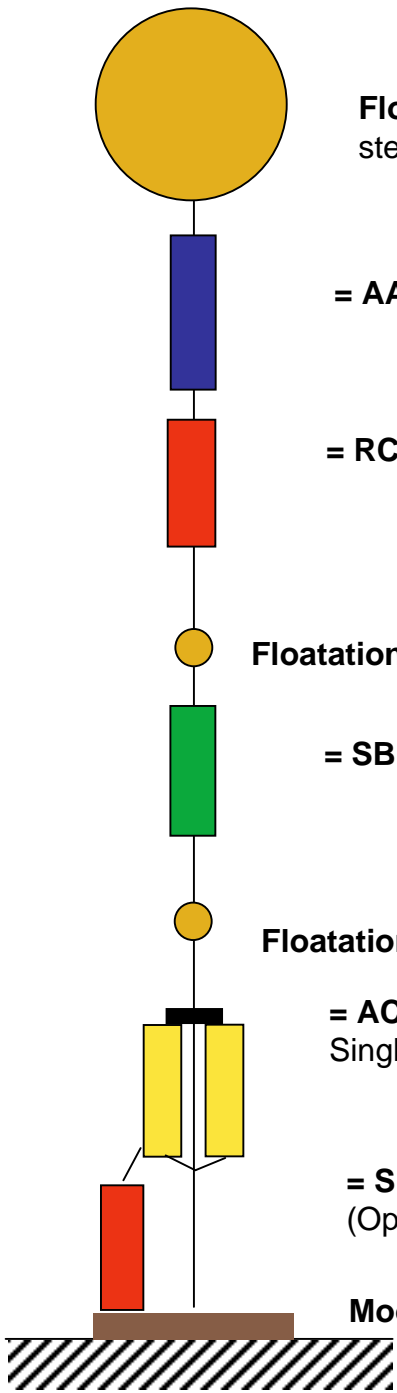
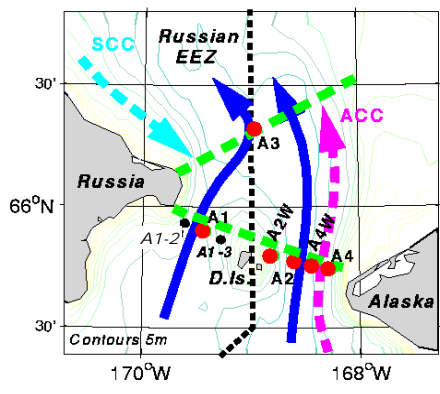
### Mooring Anchor

Mooring line may be line, wire or chain, and may contain extra floatation

# Mooring Details – Schematic 3:8

(within type, instruments may vary - see text)

## A1-3 – RUSSIAN EEZ



**Floatation**  
steel float or syntactic foam float

= AARI Current Meter and CTD, at ~ 31m

= RCM-9 LW (or RCM 7) at ~ 35m depth

**Floatation**

= SBE37 at ~ 36m depth

**Floatation**

= **ACOUSTIC RELEASES**, at ~ 39m depth  
Single or Double releases may be used.

= **SBE PRESSURE GAUGE**, in anchor at bottom  
(Optional location)

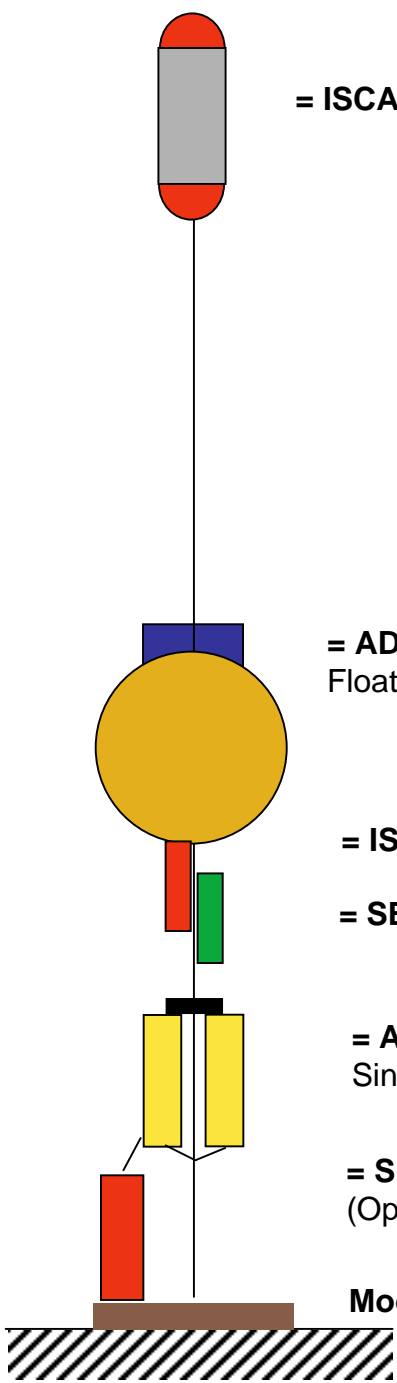
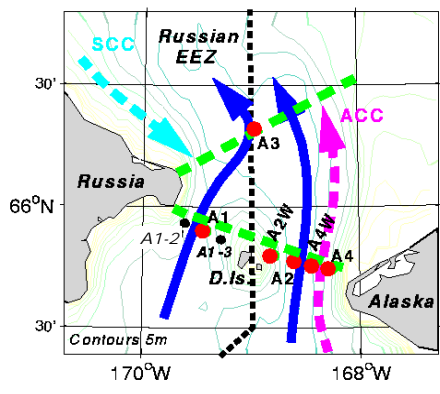
**Mooring Anchor**

Mooring line may be line, wire or chain, and may contain extra floatation

# Mooring Details – Schematic 4:8

(within type, instruments may vary - see text)

## A3 – US EEZ



= ISCAT, at ~ 15m depth

= ADCP, at ~ 48m depth  
Floatation either sphere as shown or set of 8 floats (not shown).

= ISCAT Logger, at ~ 49m depth, (see ISCAT)

= SBE37 at ~ 49m depth

= ACOUSTIC RELEASES, at ~ 50m depth,  
Single or Double releases may be used.

= SBE PRESSURE GAUGE, in anchor at bottom  
(Optional location)

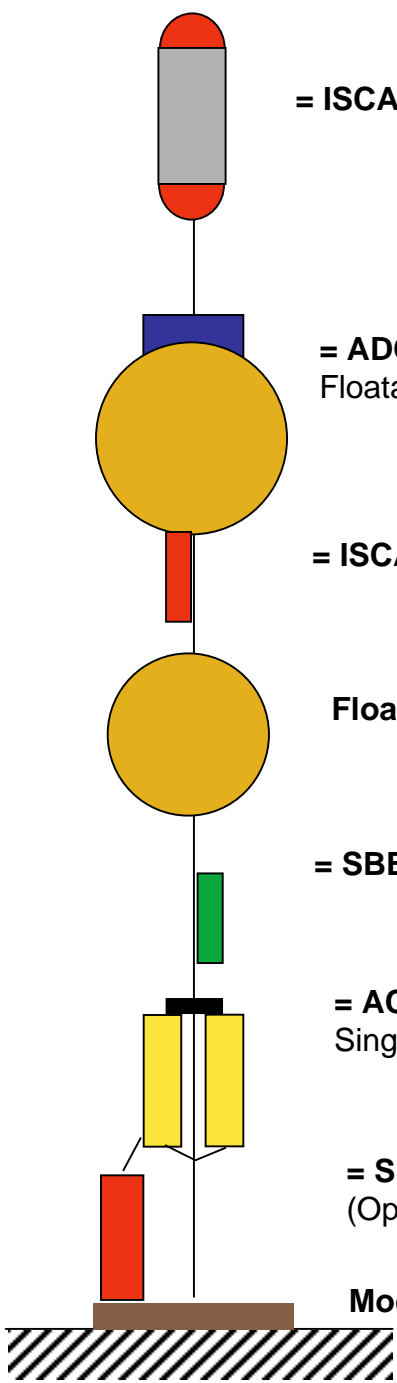
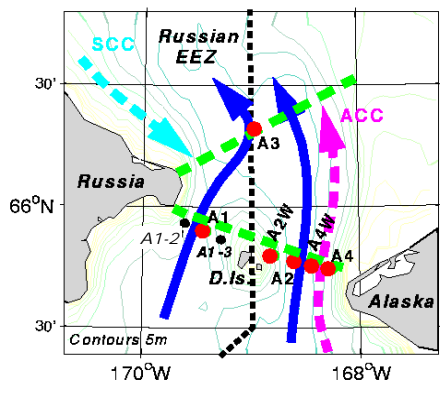
Mooring Anchor

Mooring line may be line, wire or chain, and may contain extra floatation

# Mooring Details – Schematic 5:8

(within type, instruments may vary - see text)

## A2W – US EEZ



= ISCAT, at ~ 15m depth

= ADCP, at ~ 45m depth  
Floataion either sphere as shown or set of 8 floats (not shown).

= ISCAT Logger, at ~ 46m depth, (see ISCAT)

Floataion

= SBE Sensor (SBE37 or SBE16) at ~ 49m depth

= ACOUSTIC RELEASES, at ~ 50m depth,  
Single or Double releases may be used.

= SBE PRESSURE GAUGE, in anchor at bottom  
(Optional location)

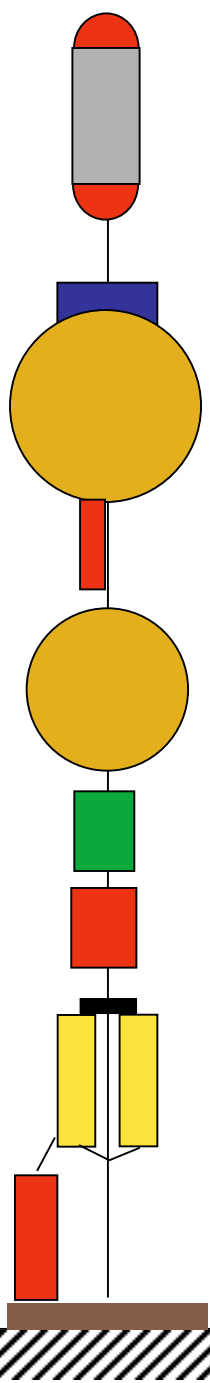
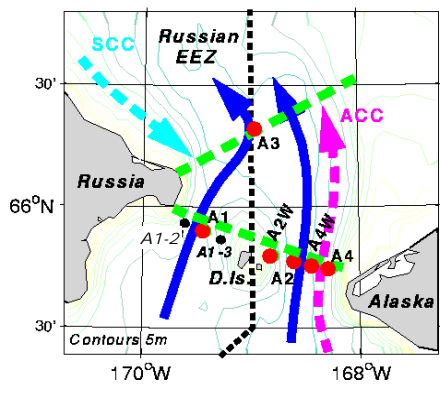
Mooring Anchor

Mooring line may be line, wire or chain, and may contain extra floatation

# Mooring Details – Schematic 6:8

(within type, instruments may vary - see text)

## A2 – US EEZ



= ISCAT, at ~ 15m depth

= ADCP, at ~ 45m depth

Floatation either sphere as shown or set of 8 floats (not shown).

= ISCAT Logger, at ~ 46m depth, (see ISCAT)

Floatation

= SBE16plus with optics at ~ 50m depth  
OR SBE16 or SBE 37

= ISUS , at ~ 52m depth

= ACOUSTIC RELEASES, at ~ 53m depth,  
Single or Double releases may be used.

= SBE PRESSURE GAUGE, in anchor at bottom  
(Optional location)

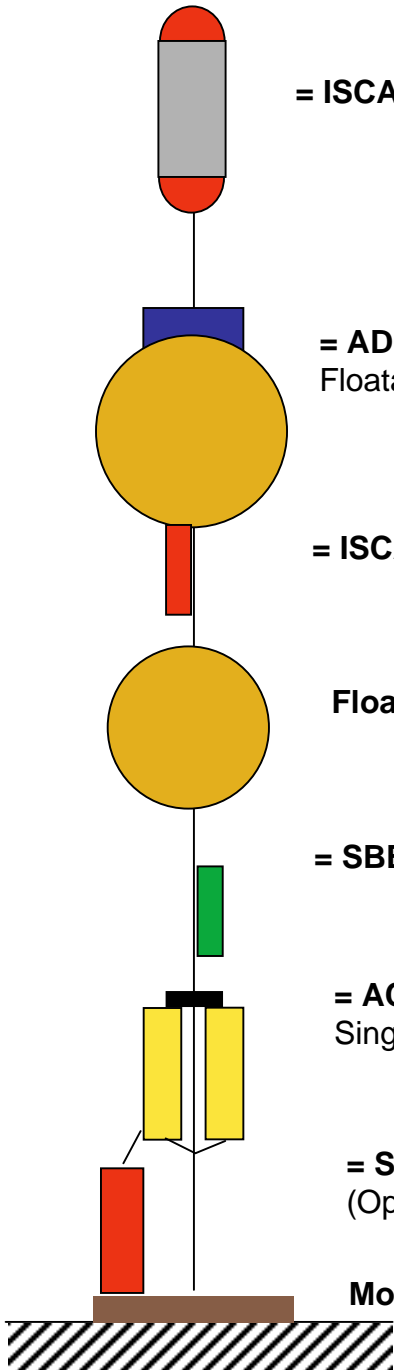
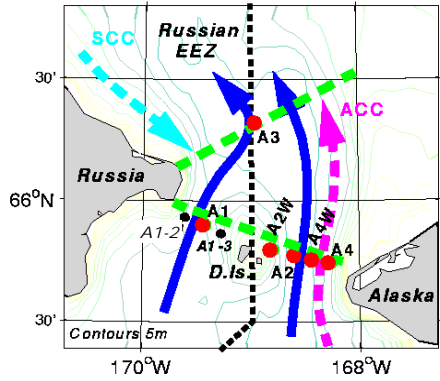
Mooring Anchor

Mooring line may be line, wire or chain, and may contain extra floatation

# Mooring Details – Schematic 7:8

(within type, instruments may vary - see text)

## A4W – US EEZ



= ISCAT, at ~ 15m depth

= ADCP, at ~ 45m depth

Floatation either sphere as shown or set of 8 floats (not shown).

= ISCAT Logger, at ~ 46m depth, (see ISCAT)

Floatation

= SBE Sensor (SBE37 or SBE16) at ~ 47m depth

= ACOUSTIC RELEASES, at ~ 48m depth

Single or Double releases may be used.

= SBE PRESSURE GAUGE, in anchor at bottom

(Optional location)

Mooring Anchor

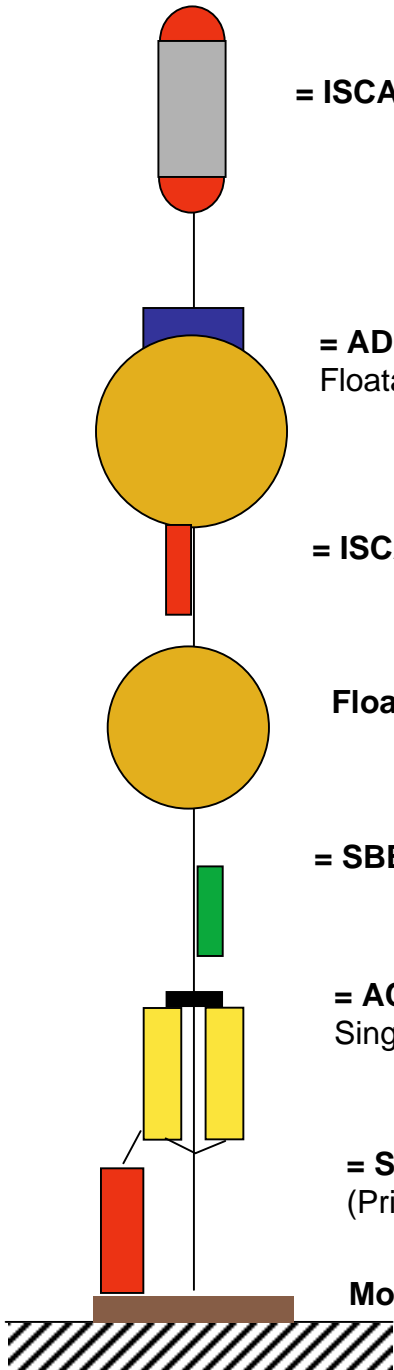
Mooring line may be line, wire or chain, and may contain extra floatation



# Mooring Details – Schematic 8:8

(within type, instruments may vary - see text)

## A4 – US EEZ



= ISCAT, at ~ 15m depth

= ADCP, at ~ 41m depth

Floatation either sphere as shown or set of 8 floats (not shown).

= ISCAT Logger, at ~ 42m depth, (see ISCAT)

Floatation

= SBE Sensor (SBE37 or SBE16) at ~ 44m depth

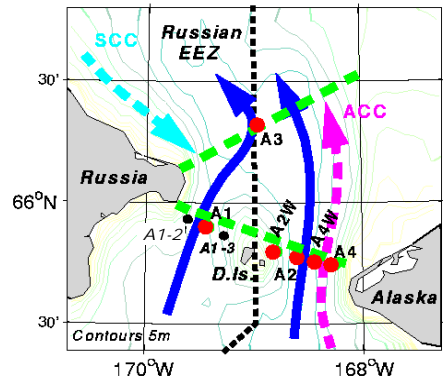
= ACOUSTIC RELEASES, at ~ 47m depth

Single or Double releases may be used.

= SBE PRESSURE GAUGE, in anchor at bottom

(Primary location)

Mooring Anchor



Mooring line may be line, wire or chain, and may contain extra floatation