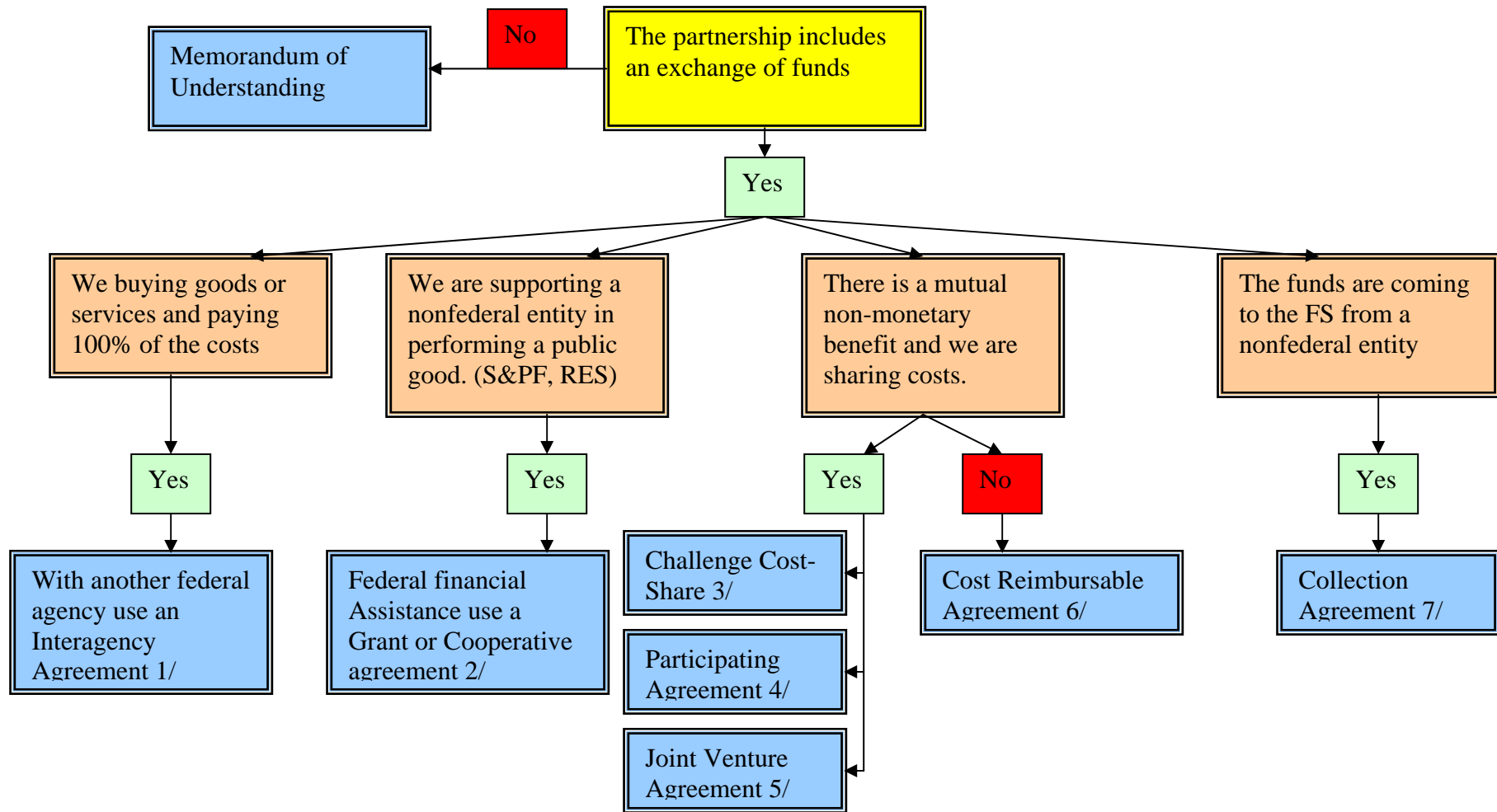


# Decision Tree to determine the appropriate tool for partnerships



1/ Agreement can include funds to another agency or another agency providing the Forest Service with fund. Use procurement with any other entity besides federal agency.

2/ Examples include Cooperative Road, Law Enforcement and Fire Agreements

3/ No set percentage of cost-share; activity must be part of Forest Service mission.

4/ Specifically for pollution abatement, manpower/ job training, publication of forest history materials, or forest protection. No specified cost-share.

5/ Cooperator must contribute at least 20% of total cost, activities must include agriculture teaching activities at institution of higher education.

6/ Forest Service buying goods/services from a State Cooperative Institution of higher education. Services or goods available in-house for agriculture teaching activities.

7/ There must be no conflict of interest; a signed agreement and apportionment authority is needed prior to starting work.