

Table XXI-1
OVARY CANCER (Invasive)

TRENDS IN SEER INCIDENCE^a AND U.S. MORTALITY^b USING THE JOINTPOINT REGRESSION PROGRAM, 1975-2002
WITH UP TO THREE JOINTPOINTS BY RACE AND AGE

		<u>Jointpoint Segment 1</u>		<u>Jointpoint Segment 2</u>		<u>Jointpoint Segment 3</u>		<u>Jointpoint Segment 4</u>	
		<u>Year</u>	<u>APC</u>	<u>Year</u>	<u>APC</u>	<u>Year</u>	<u>APC</u>	<u>Year</u>	<u>APC</u>
<u>SEER Cancer Incidence^a</u>									
All Races	All Ages	1975-1987	0.1	1987-2002	-0.9 ^c				
All Races	Under 65	1975-2002	-1.2 ^c						
All Races	65 and Over	1975-1989	1.5 ^c	1989-2002	-0.8 ^c				
White	All Ages	1975-1987	0.2	1987-2002	-0.9 ^c				
White	Under 65	1975-2002	-1.1 ^c						
White	65 and Over	1975-1989	1.5 ^c	1989-2002	-0.7 ^c				
Black	All Ages	1975-2002	-0.6 ^c						
Black	Under 65	1975-2002	-1.5 ^c						
Black	65 and Over	1975-2002	0.3						
<u>SEER Delay-Adjusted Incidence^a</u>									
All Races	All Ages	1975-1985	0.2	1985-2002	-0.7 ^c				
White	All Ages	1975-1985	0.3	1985-2002	-0.6 ^c				
Black	All Ages	1975-2002	-0.5 ^c						
<u>U.S. Cancer Mortality^b</u>									
All Races	All Ages	1975-1982	-1.2 ^c	1982-1992	0.3 ^c	1992-1998	-1.2 ^c	1998-2002	0.8
All Races	Under 65	1975-1982	-2.9 ^c	1982-1994	-1.3 ^c	1994-1998	-2.7 ^c	1998-2002	0.7
All Races	65 and Over	1975-1985	0.6 ^c	1985-1991	1.9 ^c	1991-1999	-0.4	1999-2002	1.3
White	All Ages	1975-1981	-1.4 ^c	1981-1994	0.2	1994-1998	-1.6	1998-2002	1.1
White	Under 65	1975-1982	-2.9 ^c	1982-1994	-1.2 ^c	1994-1998	-2.7 ^c	1998-2002	0.7
White	65 and Over	1975-1984	0.5 ^c	1984-1991	1.7 ^c	1991-1999	-0.3	1999-2002	1.4
Black	All Ages	1975-2002	0.0						
Black	Under 65	1975-1996	-1.9 ^c	1996-2002	0.6				
Black	65 and Over	1975-1992	2.2 ^c	1992-2002	-1.0 ^c				

Jointpoint Regression Program Version 3.0, April 2005, National Cancer Institute. (<http://srab.cancer.gov/jointpoint/>).

The APC is the Annual Percent Change based on rates age-adjusted to the 2000 US Std Population (19 age groups - Census P25-1130).

^a Trends are from the SEER 9 areas.

^b Trends are from the NCHS public use data file for the total US.

^c The APC is significantly different from zero (p<.05).

Table XXI-2
OVARY CANCER (Invasive)

SEER INCIDENCE^a AND U.S. DEATH^b RATES, AGE-ADJUSTED AND AGE-SPECIFIC RATES, BY RACE

	Incidence ^a			US Death ^b		
	All Races, Females	White Females	Black Females	All Races, Females	White Females	Black Females
<u>AGE-SPECIFIC RATES, 1998-2002</u>						
AGE AT DIAGNOSIS/DEATH:						
<1	-	-	-	-	-	-
1-4	-	-	-	-	-	-
5-9	-	-	-	-	-	-
10-14	0.6	-	-	-	-	-
15-19	1.5	1.5	-	0.1	0.1	-
20-24	1.6	1.6	-	0.2	0.2	-
25-29	1.8	1.8	-	0.3	0.3	-
30-34	2.9	2.8	-	0.6	0.6	0.7
35-39	5.3	5.5	4.0	1.4	1.4	1.4
40-44	9.0	9.3	5.7	2.9	3.0	2.7
45-49	16.4	17.1	10.1	6.0	6.3	4.4
50-54	23.7	25.4	14.2	10.7	11.2	8.3
55-59	31.9	34.4	19.8	16.1	16.9	13.3
60-64	38.8	40.5	32.3	24.0	25.0	20.5
65-69	45.0	48.3	34.8	32.1	33.3	27.5
70-74	50.9	54.8	40.5	40.1	41.5	34.8
75-79	57.5	60.9	42.2	50.7	52.3	42.7
80-84	61.0	64.4	47.5	57.9	59.7	42.9
85+	50.1	52.1	46.7	55.1	56.6	45.2
<u>AGE-ADJUSTED RATES, 1998-2002</u>						
AGE AT DIAGNOSIS/DEATH:						
All ages	14.1	14.9	10.3	8.9	9.2	7.4
Under 65	8.6	9.0	5.8	3.7	3.9	3.1
65 and over	52.0	55.4	41.1	44.6	46.0	36.9
All ages(IARC world std) ^c	10.0	10.6	7.2	5.7	5.9	4.8

^a SEER 9 areas. Rates are per 100,000 and are age-adjusted to the 2000 US Std Population (19 age groups - Census P25-1130), unless noted.

^b NCHS public use data file for the total US. Rates are per 100,000 and are age-adjusted to the 2000 US Std Population (19 age groups - Census P25-1130), unless noted.

^c Rates are per 100,000 and are age-adjusted to the IARC world standard population.

- Statistic not shown. Rate based on less than 25 cases for the time interval.

Table XXI-3
OVARY CANCER (Invasive)

SEER INCIDENCE^a AND U.S. DEATH^b RATES, AGE-ADJUSTED RATES, BY RACE AND AGE

	All Races, Females			White Females			Black Females		
	All	<65	65+	All	<65	65+	All	<65	65+
<u>SEER INCIDENCE RATES</u>									
YEAR OF DIAGNOSIS:									
1975	16.3	11.6	48.9	16.8	12.0	49.8	11.7	7.4	41.6
1976	15.8	11.2	47.8	16.6	11.9	49.5	11.4	7.4	39.3
1977	15.6	11.2	46.2	16.2	11.6	48.1	11.4	8.7	-
1978	15.4	10.8	47.2	16.1	11.3	49.3	10.0	6.1	36.8
1979	15.4	10.7	47.8	15.8	10.9	49.9	11.9	9.1	31.8
1980	15.4	10.6	48.6	16.2	11.2	50.9	11.7	7.4	41.6
1981	15.4	10.5	49.5	16.0	10.8	51.5	11.7	7.6	40.1
1982	15.6	10.1	53.4	16.1	10.5	55.1	12.3	7.4	46.2
1983	16.0	10.4	54.3	16.4	10.7	55.9	13.1	9.2	39.9
1984	16.3	11.0	52.8	17.1	11.7	54.7	11.0	5.9	46.3
1985	16.5	10.8	56.3	17.4	11.4	59.1	11.3	7.3	39.3
1986	15.0	9.9	50.4	15.7	10.5	51.7	10.6	6.2	41.5
1987	16.1	10.2	57.5	17.0	10.8	59.7	11.8	6.3	50.3
1988	15.3	9.6	54.6	16.0	10.1	56.9	11.6	6.6	45.6
1989	15.5	9.5	56.7	16.5	10.3	59.5	10.8	5.3	48.5
1990	15.4	9.4	56.4	16.3	10.1	59.1	10.1	5.6	41.7
1991	15.7	9.7	57.7	16.5	10.3	59.7	11.0	5.5	49.5
1992	14.9	9.3	53.4	15.7	9.7	56.6	11.0	7.5	35.2
1993	15.2	9.1	57.3	16.0	9.6	60.4	11.5	6.4	46.3
1994	14.4	8.8	53.1	14.9	9.1	55.3	12.4	6.5	53.5
1995	14.6	8.7	54.9	15.3	9.3	57.2	10.3	4.9	47.7
1996	14.1	8.4	53.6	15.3	9.2	57.2	9.0	4.5	40.0
1997	14.7	9.2	52.6	15.4	9.6	55.1	10.4	5.6	43.5
1998	14.2	8.7	52.6	15.0	9.1	55.6	10.9	6.1	44.0
1999	14.6	8.6	55.9	15.3	8.9	60.0	10.7	6.2	42.1
2000	14.1	8.9	49.9	15.0	9.5	53.1	10.5	5.4	45.8
2001	14.2	9.0	50.2	15.2	9.6	54.2	9.2	6.1	30.7
2002	13.3	7.7	51.6	13.8	8.0	53.9	9.9	5.2	42.5
<u>U.S. DEATH RATES</u>									
YEAR OF DEATH:									
1975	9.8	5.8	37.5	10.2	6.0	38.8	7.2	4.6	24.6
1976	10.0	5.7	39.7	10.3	5.9	40.6	8.0	4.6	31.5
1977	9.6	5.5	38.0	9.9	5.6	39.1	7.4	4.3	29.2
1978	9.6	5.4	38.0	9.8	5.6	38.9	7.4	4.2	29.3
1979	9.3	5.1	38.6	9.6	5.2	39.7	7.5	4.4	28.9
1980	9.3	5.0	39.1	9.5	5.1	40.0	7.9	4.2	33.2
1981	9.2	4.9	38.9	9.5	5.1	39.8	7.4	3.7	32.4
1982	9.2	4.8	39.8	9.5	5.0	40.7	7.4	3.6	33.5
1983	9.2	4.7	40.3	9.4	4.8	41.4	7.7	4.1	32.3
1984	9.1	4.6	40.1	9.4	4.8	40.9	7.6	3.8	33.8
1985	9.1	4.6	40.2	9.3	4.7	41.3	7.3	3.7	31.9
1986	9.2	4.6	41.6	9.5	4.7	42.6	7.4	3.7	33.4
1987	9.2	4.5	41.9	9.5	4.6	42.8	7.6	3.5	35.5
1988	9.3	4.4	43.2	9.6	4.6	44.1	7.9	3.7	36.9
1989	9.2	4.3	43.2	9.5	4.5	44.3	7.4	3.3	36.2
1990	9.3	4.3	44.4	9.6	4.5	45.2	7.9	3.3	39.2
1991	9.5	4.3	45.4	9.7	4.5	46.1	8.4	3.4	42.5
1992	9.5	4.2	45.5	9.7	4.4	46.5	8.2	3.6	40.0
1993	9.1	4.0	44.1	9.3	4.2	44.9	7.7	3.0	40.4
1994	9.4	4.1	45.6	9.7	4.3	46.7	7.8	3.2	39.7
1995	9.1	4.0	44.8	9.5	4.2	46.1	7.4	2.9	38.0
1996	8.9	3.8	43.7	9.1	4.0	44.8	7.3	2.9	37.9
1997	8.9	3.8	44.7	9.2	3.9	45.6	7.9	3.1	41.2
1998	8.7	3.7	43.6	9.0	3.8	45.0	7.4	3.2	36.1
1999	8.8	3.7	43.6	9.1	3.9	44.8	7.4	3.1	37.3
2000	8.9	3.7	45.0	9.2	3.8	46.6	7.1	2.9	36.5
2001	9.0	3.7	45.4	9.3	3.9	46.9	7.5	3.2	37.4
2002	9.0	3.8	45.2	9.4	4.0	46.7	7.4	3.1	37.3

^a SEER 9 areas. Rates are per 100,000 and are age-adjusted to the 2000 US Std Population (19 age groups - Census P25-1130).

^b NCHS public use data file for the total US. Rates are per 100,000 and are age-adjusted to the 2000 US Std Population (19 age groups - Census P25-1130), unless noted.

- Statistic not shown. Rate based on less than 25 cases for the time interval.

Table XXI-4
OVARY CANCER (Invasive)

SURVIVAL RATES, BY RACE, DIAGNOSIS YEAR, STAGE AND AGE

	All Races, Females			White Females			Black Females		
	All	<65	65+	All	<65	65+	All	<65	65+
<u>5-YR RELATIVE SURVIVAL RATES</u>									
YEAR OF DIAGNOSIS:									
1960-1963 ^a	-	-	-	32	-	-	32	-	-
1970-1973 ^a	-	-	-	36	-	-	32	-	-
1974-1976 ^b	36.9	43.1	23.7	36.5	42.7	23.4	41.1	44.8	32.2 ^e
1977-1979 ^b	38.5	46.7	22.3	37.9	46.0	22.7	39.9	49.3	9.9
1980-1982 ^b	39.2	48.4	23.5	38.7	48.2	23.5	39.4	47.1	22.8 ^e
1983-1985 ^b	41.1	50.8	26.0	40.3	50.0	25.8	42.0	52.7	20.7
1986-1988 ^b	39.7	51.2	23.8	39.4	51.0	23.9	36.6	47.3	19.8
1989-1991 ^b	40.9	53.3	25.2	41.2	54.0	25.5	30.6	42.4	16.2
1992-1994 ^b	43.0	55.3	27.4	42.2	55.0	27.0	45.9	56.6	27.6
1995-2001 ^b	44.6 ^d	56.6	28.4	44.4 ^d	57.1	28.4	37.7	48.2	21.4
1995-2001 ^b									
All Stages	44.6	56.6	28.4	44.4	57.1	28.4	37.7	48.2	21.4
Localized	93.6	93.7	93.6	93.4	93.8	92.2	92.1	90.1	95.8 ^f
Regional	68.1	74.4	56.1	67.7	75.1	54.4	56.8 ^e	57.7 ^e	-
Distant	29.1	38.1	19.4	29.5	39.0	19.8	21.4	29.6	11.6
Unstaged	24.7	45.2	13.0	24.3	45.1	13.1	23.1 ^e	-	9.6 ^e
<u>5-YR PERIOD SURVIVAL RATES^{bc}</u>									
YEAR OF DIAGNOSIS:									
1995-2001	45.0	56.9	28.3	44.8	57.6	28.3	38.6	48.0	22.2
<u>STAGE DISTRIBUTION (%) 1995-2001^b</u>									
All Stages									
Number of cases	11,383	6,001	5,382	9,812	5,011	4,801	749	422	327
Percent	100%	100%	100%	100%	100%	100%	100%	100%	100%
Localized	19	27	10	18	27	10	17	24	8
Regional	7	8	5	7	8	5	9	10	7
Distant	68	62	75	69	62	76	66	61	73
Unstaged	7	4	10	7	4	10	8	5	12
<u>5-YR RELATIVE SURVIVAL RATES, 1995-2001^b</u>									
AGE AT DIAGNOSIS:									
<45	73.5	-	-	74.0	-	-	73.0	-	-
45-54	53.5	-	-	54.8	-	-	35.6 ^e	-	-
55-64	47.5	-	-	48.3	-	-	34.6	-	-
65-74	35.7	-	-	35.4	-	-	24.8	-	-
75+	19.8	-	-	20.2	-	-	15.6	-	-
Under 65	56.6	-	-	57.1	-	-	48.2	-	-
65 and over	28.4	-	-	28.4	-	-	21.4	-	-

^a Rates are based on End Results data from a series of hospital registries and one population-based registry.

^b Rates are from the SEER 9 areas (San Francisco, Connecticut, Detroit, Hawaii, Iowa, New Mexico, Seattle, Utah, Atlanta). Rates are based on follow-up of patients into 2002.

^c Period survival provides a more up-to-date estimate of survival by piecing together the most recent conditional survival estimates from several cohorts. It is computed here using three calendar year blocks (1999-2001: 0-1 year survival), (1998-2000: 1-2 year survival), (1997-1999: 2-3 year survival), (1996-1998: 3-4 year survival), (1995-1997: 4-5 years survival).

^d The difference in rates between 1974-1976 and 1995-2001 is statistically significant (p<.05).

^e The standard error of the survival rate is between 5 and 10 percentage points.

^f The standard error of the survival rate is greater than 10 percentage points.

- Statistic could not be calculated.

Table XXI-5
OVARY CANCER (Invasive)

SURVIVAL RATES^a

By Year of Diagnosis

All Races, Females

Year of Diagnosis

	1975- 1979	1980- 1984	1985	1986	1987	1988	1989	1990	1991	1992	1993	1994	1995	1996	1997	1998	1999	2000	2001
Relative Survival Rates (SEER ^b)																			
1-year	65.1	70.6	72.1	69.2	70.9	69.6	72.0	72.1	72.8	75.0	72.5	72.1	73.8	74.7	77.2	75.9	74.3	77.0	76.1
2-year	49.6	54.0	55.5	52.4	54.1	56.5	56.5	57.7	59.0	60.9	59.0	61.3	61.0	62.7	66.2	65.0	62.1	64.2	
3-year	42.9	46.8	48.1	46.2	46.6	49.1	47.6	49.1	49.8	52.0	49.6	54.0	52.1	53.7	57.6	56.2	53.2		
4-year	39.5	42.5	42.8	42.2	42.6	44.5	41.8	45.0	44.7	47.5	43.8	48.0	47.4	47.4	50.0	51.5			
5-year	37.6	40.2	39.9	38.6	39.2	41.2	39.0	41.9	41.6	43.6	39.9	45.6	44.1	43.4	45.3				
6-year	36.4	38.5	37.9	37.2	37.8	39.4	36.7	40.3	39.5	41.3	38.1	42.3	40.8	40.5					
7-year	35.4	37.9	36.4	36.1	37.2	38.4	35.8	39.2	37.9	39.9	37.5	40.6	39.2						
8-year	34.7	36.8	35.8	35.7	36.5	37.7	34.4	38.0	36.8	39.3	36.5	39.9							
9-year	34.4	36.0	35.1	35.3	36.1	37.1	34.4	37.4	36.4	39.0	35.6								
10-year	34.3	35.6	34.9	35.0	36.0	36.9	34.3	37.4	35.8	38.9									
11-year	34.2	35.5	34.6	35.0	36.0	36.3	34.3	37.0	35.4										
12-year	33.9	35.2	34.6	34.8	35.7	36.1	33.9	37.0											
13-year	33.8	35.0	34.6	34.7	35.5	35.4	33.6												
14-year	33.8	34.9	34.6	34.7	35.5	34.7													
15-year	33.4	34.9	34.6	34.7	35.5														
16-year	33.4	34.9	34.6	34.7															
17-year	33.4	34.9	34.6																
18-year	33.4	34.9																	
19-year	33.4																		
20-year	33.4																		

^a Survival rates are relative rates expressed as percents.
^b Rates are from the SEER 9 areas.

Table XXI-6
OVARY CANCER (Invasive)

Percent Diagnosed With Cancer In 10, 20 and 30 Years and In Remaining Lifetime,
 Given Cancer Free At Current Age By Race

Lifetime Risk (Percent) of Being Diagnosed (13 SEER Areas) With Cancer and
 Lifetime Risk (Percent) of Dying (Total U.S.) From Cancer

2000-2002

All Races

Current Age	+10 yrs	+20 yrs	+30 yrs	Eventually
0	0.00	0.01	0.03	1.48
10	0.01	0.03	0.07	1.49
20	0.02	0.06	0.19	1.48
30	0.04	0.17	0.43	1.47
40	0.13	0.39	0.74	1.44
50	0.26	0.63	1.02	1.34
60	0.38	0.79	1.06	1.13

Lifetime Risk of Being Diagnosed = 1.48%
 Lifetime Risk of Dying = 1.05%

Whites

Current Age	+10 yrs	+20 yrs	+30 yrs	Eventually
0	0.00	0.01	0.03	1.59
10	0.01	0.03	0.08	1.60
20	0.02	0.06	0.19	1.59
30	0.05	0.18	0.46	1.58
40	0.13	0.41	0.80	1.55
50	0.29	0.68	1.11	1.44
60	0.42	0.86	1.14	1.21

Lifetime Risk of Being Diagnosed = 1.59%
 Lifetime Risk of Dying = 1.10%

Blacks

Current Age	+10 yrs	+20 yrs	+30 yrs	Eventually
0	0.00	0.01	0.02	0.92
10	0.01	0.01	0.05	0.94
20	0.01	0.04	0.12	0.93
30	0.03	0.11	0.25	0.93
40	0.08	0.22	0.47	0.91
50	0.15	0.41	0.66	0.87
60	0.28	0.55	0.73	0.79

Lifetime Risk of Being Diagnosed = 0.92%
 Lifetime Risk of Dying = 0.74%

Devcan Version 6.0, April 2005, National Cancer Institute (<http://srab.cancer.gov/devcan/>).

Source: Incidence data are from the SEER 13 areas (San Francisco, Connecticut, Detroit, Hawaii, Iowa, New Mexico, Seattle, Utah, Atlanta, San Jose-Monterey, Los Angeles, Alaska Native Registry, Rural Georgia). Mortality data are from the NCHS public use data file for the total US.

Table XXI-7
OVARY CANCER (Invasive)

SEER INCIDENCE AND U.S. MORTALITY
AGE-ADJUSTED RATES AND TRENDS^a
 By Race/Ethnicity and Sex

Incidence^b

RACE/ETHNICITY	Rate 1998-2002	Trend 1992-2002
	Rate per 100,000 persons	APC (%)
	<u>Females</u>	<u>Females</u>
All Races	13.9	-0.9 ^e
White	14.8	-0.8 ^e
White Hispanic ^c	12.3	0.0
White Non-Hispanic ^c	15.1	-0.9 ^e
Black	9.9	-1.6 ^e
Asian/Pacific Islander	10.4	0.3
Amer Ind/Alaska Nat	7.8	-
Hispanic ^c	11.9	0.2

Mortality^d

RACE/ETHNICITY	Rate 1998-2002	Trend 1992-2002
	Rate per 100,000 persons	APC (%)
	<u>Females</u>	<u>Females</u>
All Races	8.9	-0.5 ^e
White	9.2	-0.4
White Hispanic ^c	6.4	-0.6
White Non-Hispanic ^c	9.4	-0.2
Black	7.4	-0.8 ^e
Asian/Pacific Islander	4.7	0.0
Amer Ind/Alaska Nat	4.9	-0.4
Hispanic ^c	6.2	-0.6

- The APC is the Annual Percent Change over the time interval.
- Statistic not shown. Rate based on less than 25 cases for the time interval. Trend based on less than 10 cases for at least one year within the time interval.
- ^a Rates are age-adjusted to the 2000 US Std Population (19 age groups - Census P25-1130). Trends are based on rates age-adjusted to the 2000 US Std Population (19 age groups - Census P25-1130).
- ^b Incidence data are from the 13 SEER areas (San Francisco, Connecticut, Detroit, Hawaii, Iowa, New Mexico, Seattle, Utah, Atlanta, San Jose-Monterey, Los Angeles, Alaska Native Registry and Rural Georgia).
- ^c Hispanic and Non-Hispanic are not mutually exclusive from Whites, Blacks, Asian Pacific Islanders, and American Indians/Alaska Natives. Incidence data for Hispanics and Non-Hispanics do not include cases from Detroit, Hawaii, Alaska Native Registry and Rural Georgia. For mortality, information is included for all states except Connecticut, Maine, Maryland, Minnesota, New Hampshire, New York, North Dakota, Oklahoma and Vermont.
- ^d Mortality data are analyzed from a public use file provided by the National Center for Health Statistics (NCHS).
- ^e The APC is significantly different from zero (p<.05).

Table XXI-8
OVARY CANCER (Invasive)

AGE-ADJUSTED SEER INCIDENCE RATES AND SEER DEATH RATES^a
 By Registry, Race and Age

	<u>All Races, Females</u>			<u>White Females</u>			<u>Black Females</u>		
	<u>All</u>	<u><65</u>	<u>65+</u>	<u>All</u>	<u><65</u>	<u>65+</u>	<u>All</u>	<u><65</u>	<u>65+</u>
<u>SEER INCIDENCE RATES^b, 1998-2002</u>									
REGISTRY									
13 SEER Areas	13.9	8.5	50.7	14.8	9.0	54.7	9.9	5.6	39.5
11 SEER Areas	13.9	8.5	50.8	14.8	9.0	54.7	9.9	5.6	39.5
9 SEER Areas	14.1	8.6	52.0	14.9	9.0	55.4	10.3	5.8	41.1
San Francisco-Oakland	13.9	8.9	48.6	15.2	9.3	55.5	10.2	6.5	36.1
Connecticut	13.8	8.6	49.7	14.3	9.0	51.2	6.5	3.7	-
Metropolitan Detroit	14.2	8.6	52.9	15.4	9.7	54.8	10.9	5.7	47.0
Hawaii	11.6	8.2	35.2	13.5	8.4	48.9	-	-	-
Iowa	14.4	8.8	53.4	14.4	8.7	53.6	-	-	-
New Mexico	12.6	7.9	45.1	12.8	8.0	46.2	-	-	-
Seattle-Puget Sound	16.2	9.2	64.2	16.9	9.5	67.8	-	-	-
Utah	13.5	8.1	50.6	13.8	8.3	51.5	-	-	-
Metropolitan Atlanta	13.8	7.8	55.1	14.9	8.5	59.2	11.5	6.6	45.8
San Jose-Monterey	13.2	8.4	46.2	14.3	8.8	52.6	-	-	-
Los Angeles	13.4	8.4	47.7	14.6	9.1	52.9	8.9	5.0	36.2
<u>SEER DEATH RATES^c, 1998-2002</u>									
REGISTRY									
13 SEER Areas	8.9	3.7	44.8	9.6	3.9	48.8	7.1	3.2	34.4
11 SEER Areas	8.9	3.7	44.9	9.6	3.9	48.9	7.1	3.2	34.5
9 SEER Areas	8.9	3.6	45.4	9.5	3.8	48.9	7.1	3.1	34.6
San Francisco-Oakland	8.4	3.8	40.2	9.7	4.2	47.4	7.1	3.2	33.8
Connecticut	8.8	3.8	43.6	9.2	4.0	45.2	4.3	-	-
Metropolitan Detroit	9.1	3.9	45.1	9.7	4.2	47.7	7.1	3.1	34.7
Hawaii	6.3	3.5	25.6	9.9	5.7	39.0	-	-	-
Iowa	9.6	3.5	51.5	9.6	3.5	51.8	-	-	-
New Mexico	7.9	3.4	38.8	8.0	3.4	39.5	-	-	-
Seattle-Puget Sound	10.5	3.9	56.3	11.0	4.0	59.4	-	-	-
Utah	8.5	3.3	44.5	8.6	3.4	44.7	-	-	-
Metropolitan Atlanta	8.9	3.2	48.3	9.0	3.0	50.5	8.3	3.4	42.2
San Jose-Monterey	8.6	3.4	44.8	9.7	3.8	50.8	-	-	-
Los Angeles	8.9	3.9	43.3	9.7	4.1	48.2	7.4	3.4	34.6

^a Incidence and death rates are per 100,000 and are age-adjusted to the 2000 US Std Population (19 age groups - Census P25-1130).

^b The SEER 9 areas are San Francisco, Connecticut, Detroit, Hawaii, Iowa, New Mexico, Seattle, Utah, and Atlanta. The SEER 11 areas comprise the SEER 9 areas plus San Jose-Monterey and Los Angeles. The SEER 13 areas comprise the SEER 11 areas plus the Alaska Native Registry and Rural Georgia.

^c NCHS public use data file for the total US with analyses limited to the SEER geographic areas.

- Statistic could not be calculated or populations are inadequate.

Table XXI-9
OVARY CANCER (Invasive)

AVERAGE ANNUAL AGE-ADJUSTED CANCER DEATH^a RATES BY STATE, ALL RACES, 1998-2002

All Ages

State	Rate	SE	Rank	PD
TOTAL U.S.	8.9	0.03		
High Five States				
South Dakota	10.9 ^b	0.71	(01)	22.5
Maine	10.6 ^b	0.52	(02)	19.1
Idaho	10.2	0.56	(03)	14.6
Washington	10.2 ^c	0.26	(04)	14.6
Oregon	10.2 ^c	0.32	(05)	14.6
Low Five States				
South Carolina	8.0	0.27	(47)	-10.1
New Mexico	7.9	0.41	(48)	-11.2
North Dakota	7.8	0.63	(49)	-12.4
Alaska	7.0 ^b	0.90	(50)	-21.3
Hawaii	6.3 ^{bc}	0.43	(51)	-29.2

Ages <65

State	Rate	SE	Rank	PD
TOTAL U.S.	3.7	0.02		
High Five States				
Wyoming	4.7 ^b	0.65	(01)	27.0
West Virginia	4.6 ^b	0.32	(02)	24.3
Maine	4.5 ^b	0.38	(03)	21.6
South Dakota	4.4 ^b	0.53	(04)	18.9
Pennsylvania	4.3 ^{bc}	0.12	(05)	16.2
Low Five States				
Oklahoma	3.2	0.20	(47)	-13.5
Texas	3.2 ^c	0.09	(48)	-13.5
South Carolina	3.1 ^{bc}	0.18	(49)	-16.2
Alaska	2.9 ^b	0.49	(50)	-21.6
North Dakota	2.8 ^b	0.45	(51)	-24.3

Ages 65+

State	Rate	SE	Rank	PD
TOTAL U.S.	44.6	0.21		
High Five States				
Idaho	57.0 ^b	3.70	(01)	27.8
South Dakota	56.1 ^b	4.23	(02)	25.8
Washington	54.7 ^{bc}	1.69	(03)	22.6
Maine	53.2 ^b	3.15	(04)	19.3
Oregon	51.9 ^{bc}	2.02	(05)	16.4
Low Five States				
Louisiana	39.5 ^b	1.60	(47)	-11.4
New Mexico	38.8 ^b	2.56	(48)	-13.0
Rhode Island	38.7 ^b	2.88	(49)	-13.2
Alaska	35.6 ^b	6.26	(50)	-20.2
Hawaii	25.6 ^{bc}	2.39	(51)	-42.6

For additional detailed cancer statistics by state, please visit the State Cancer Profiles website. <http://statecancerprofiles.cancer.gov/>

^a NCHS public use data file. Rates are per 100,000 and are age-adjusted to the 2000 US Std Population (19 age groups - Census P25-1130).
^b Absolute percent difference between state rate and total U.S. rate is 15% or more.
^c Difference between state rate and total U.S. rate is statistically significant (p<=.0002).
SE Standard error of the rate.
PD Percent difference between state rate and total U.S. rate.

Table XXI-10
OVARY CANCER (Invasive)

Estimated United States Cancer Prevalence Counts^a on January 1, 2002
 By Race/Ethnicity and Years Since Diagnosis

Years Since Diagnosis	0 to <5	5 to <10	10 to <15	15 to <20	20 to <25	0 to <12 ^e	0 to <27 ^e	>=27 ^g	Complete ^h
<u>Race</u>									
All Races ^b	54,659	28,651	21,938	18,448	13,976	92,773	142,293	27,582	169,875
White ^b	48,713	25,490	20,168	16,592	12,544	82,993	127,668	24,101	151,769
Black ^b	3,644	1,942	1,108	1,251	1,000	5,937	9,296	2,334	11,630
Asian/Pacific Islander ^c	1,622	854	+	+	+	2,737	+	+	+
Hispanic ^d	3,201	1,748	+	+	+	5,487	+	+	+

Estimated prevalence percent^a on January 1, 2002, of the SEER 11 population diagnosed in the previous 10 years
 By Age at Prevalence and Race/Ethnicity

Age at Prevalence	All Ages	Age Specific (Crude)									Age-Adjusted ^f	
		0-9	10-19	20-29	30-39	40-49	50-59	60-69	70-79	80+	All Ages	
<u>Race</u>												
All Races ^c	0.0529%	0.0004%	0.0050%	0.0120%	0.0203%	0.0538%	0.1158%	0.1613%	0.1770%	0.1184%	0.0528%	
White ^c	0.0586%	0.0005%	0.0049%	0.0122%	0.0206%	0.0572%	0.1251%	0.1763%	0.1928%	0.1249%	0.0567%	
Black ^c	0.0280%	-	0.0045%	0.0092%	0.0168%	0.0338%	0.0640%	0.0981%	0.1073%	0.0890%	0.0332%	
Asian/Pacific Islander ^c	0.0418%	-	0.0064%	0.0138%	0.0216%	0.0497%	0.0976%	0.1134%	0.1132%	0.0727%	0.0419%	
Hispanic ^d	0.0270%	0.0006%	0.0055%	0.0116%	0.0160%	0.0418%	0.0854%	0.1173%	0.1452%	0.0953%	0.0413%	

^a US 2002 cancer prevalence counts are based on 2002 cancer prevalence proportions from the SEER registries and 1/1/2002 US population estimates based on the average of 2001 and 2002 population estimates from the US Bureau of the Census. Prevalence was calculated using the First Malignant Primary Only for a person.

^{b c d} Statistics based on ^b SEER 9 Areas ^c SEER 11 Areas and Rural Georgia ^d SEER 11 Areas excluding Hawaii and Detroit.
^e Maximum limited-duration prevalence: 27 years for 1975-2002 SEER 9 data; 12 years for 1990-2002 SEER 11 data (used to calculate prevalence for Hispanics and Asian Pacific Islanders).

^f Percentages are age-adjusted to the 2000 US standard population by 5-year age groups.

^{g h} (g) Cases diagnosed more than 27 years ago were estimated using the completeness index method (Capocaccia et. al. 1997, Merrill et. al. 2000). (h) Complete prevalence is obtained by summing 0 to <27 and >=27.

- Statistic not shown. Statistic based on fewer than 5 cases estimated alive in SEER for the time interval.

+ Not available.

SEER Incidence, Delay Adjusted Incidence and US Death Rates+ Ovary Cancer, by Race

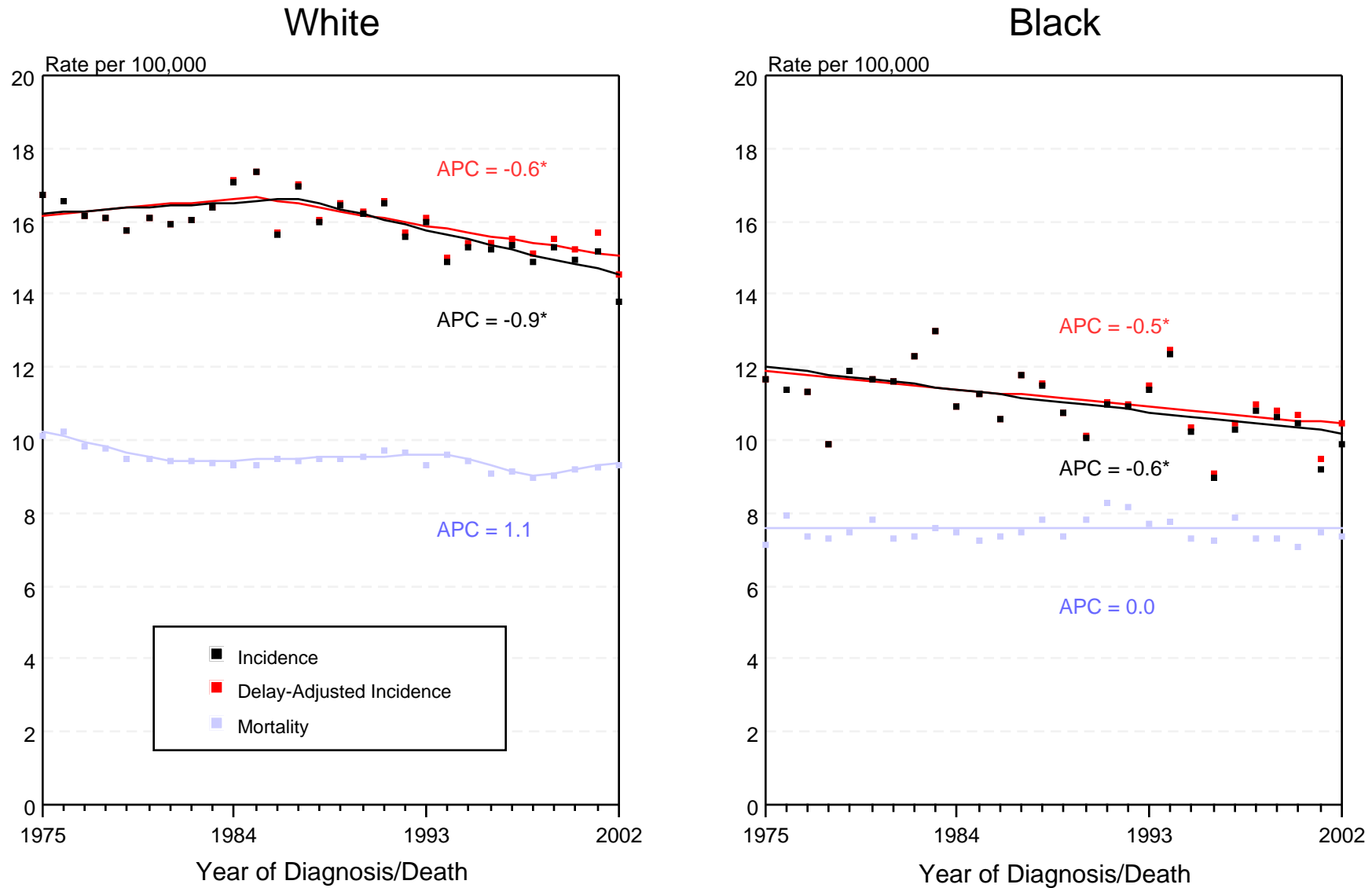


Figure XXI-1

+ Source: SEER 9 areas and NCHS public use data file for the total US. Rates are age-adjusted to the 2000 US Std Population (19 age groups - Census P25-1103). Regression lines and APCs are calculated using the Joinpoint Regression Program Version 3.0, April 2005, National Cancer Institute.

The APC is the Annual Percent Change for the regression line segments. The APC shown on the graph is for the most recent trend.

* The APC is significantly different from zero ($p < 0.05$).

SEER Incidence and US Death Rates+ Ovary Cancer, by Age and Race

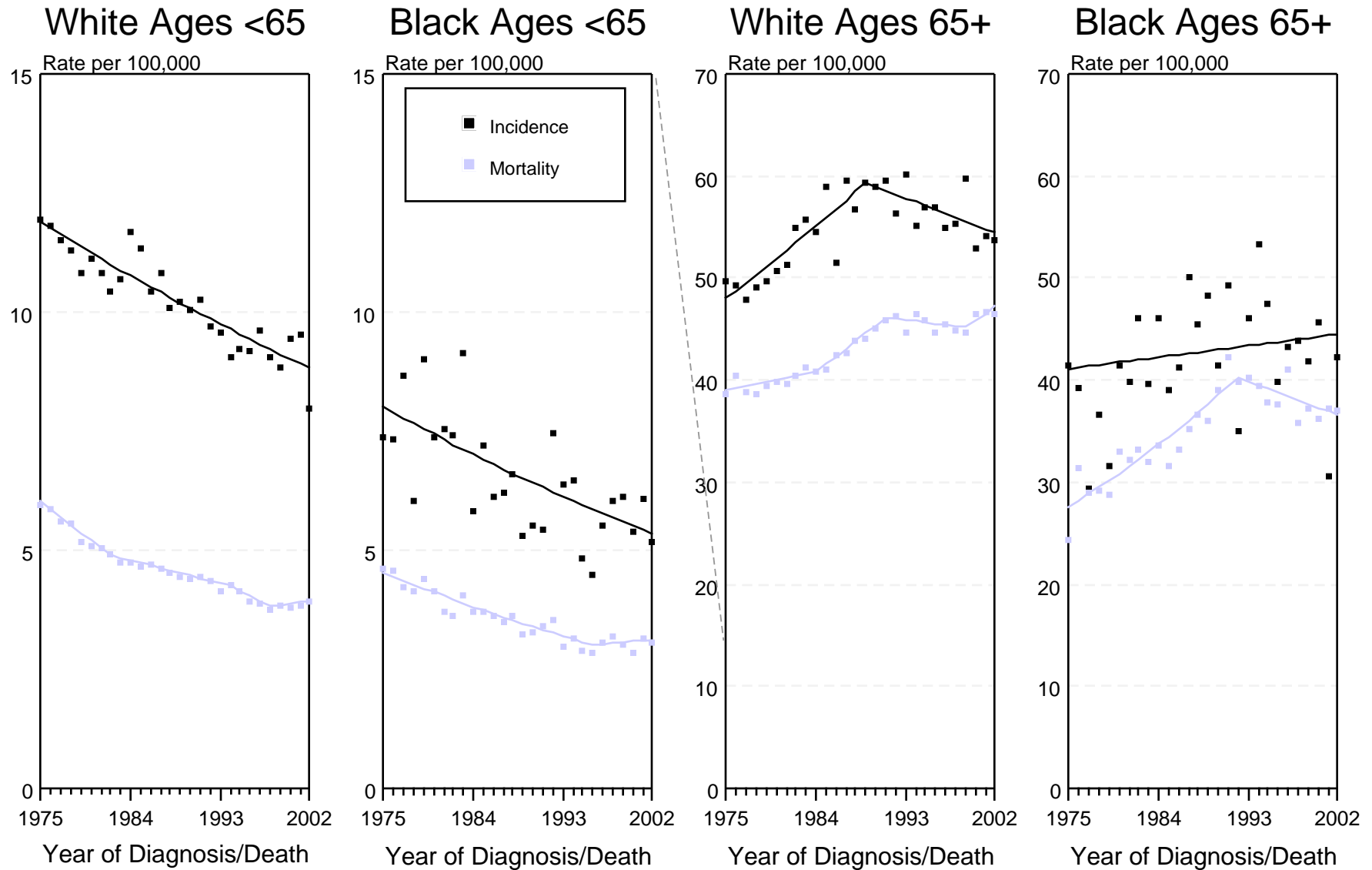


Figure XXI-2

+ Source: SEER 9 areas and NCHS public use data file for the total US. Rates are age-adjusted to the 2000 US Std Population (19 age groups - Census P25-1103). Regression lines are calculated using the Joinpoint Regression Program Version 3.0, April 2005, National Cancer Institute.

SEER Incidence and US Death Rates + Ovary Cancer

Joinpoint Analyses for 1975-2002 for Whites and Blacks

Rates for 1992-2002 for Asian/Pacific Islander, American Indian/Alaska Native and Hispanic

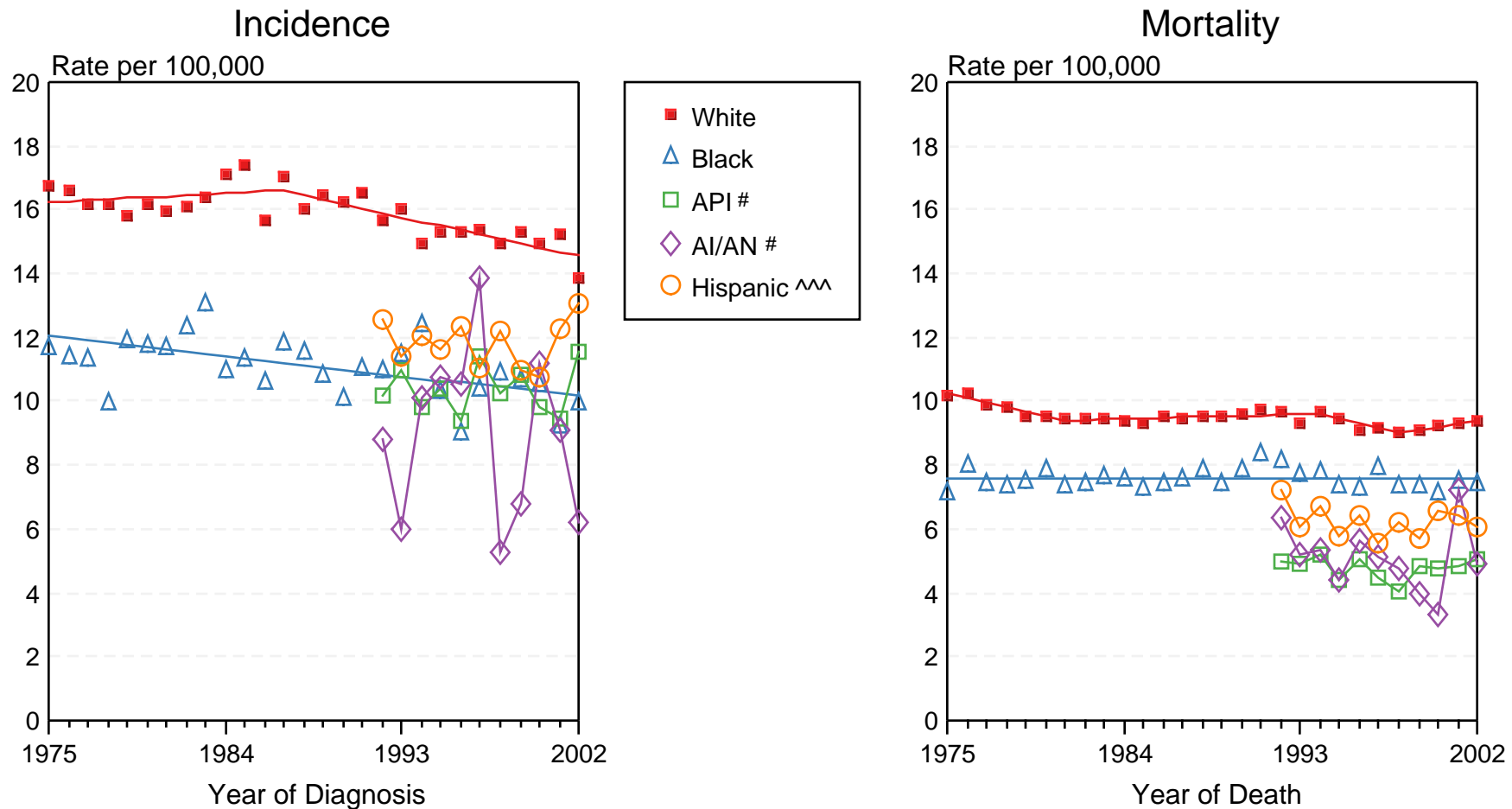


Figure XXI-3

+ Source: Incidence data for whites and blacks is from the SEER 9 areas (San Francisco, Connecticut, Detroit, Hawaii, Iowa, New Mexico, Seattle, Utah, Atlanta). Incidence data for Asian/Pacific Islanders, American Indian/Alaska Natives and Hispanics is from the SEER 13 Areas (SEER 9 Areas, San Jose-Monterey, Los Angeles, Alaska Native Registry and Rural Georgia). Mortality data is from NCHS public use data file for the total US. Rates are age-adjusted to the 2000 US Std Population (19 age groups - Census P25-1103). Regression lines for whites and blacks are calculated using the Joinpoint Regression Program Version 3.0, April 2005, National Cancer Institute.

API = Asian/Pacific Islander. AI/AN = American Indian/Alaska Native.

^^ Hispanic is not mutually exclusive from Whites, Blacks, Asian/Pacific Islanders, and American Indians/Alaska Natives. Incidence data for Hispanics excludes cases from Detroit, Hawaii, Alaska Native Registry and Rural Georgia. Mortality data for Hispanics excludes cases from Connecticut, Maine, Maryland, Minnesota, Oklahoma, New Hampshire, New York, North Dakota, and Vermont.