

Table VII-1  
CORPUS AND UTERUS, NOS CANCER (Invasive)

TRENDS IN SEER INCIDENCE<sup>a</sup> AND U.S. MORTALITY<sup>b</sup> USING THE JOINPOINT REGRESSION PROGRAM, 1975-2002  
WITH UP TO THREE JOINPOINTS BY RACE AND AGE

		<u>Joinpoint Segment 1</u>		<u>Joinpoint Segment 2</u>		<u>Joinpoint Segment 3</u>		<u>Joinpoint Segment 4</u>	
		Year	APC	Year	APC	Year	APC	Year	APC
<u>SEER Cancer Incidence<sup>a</sup></u>									
All Races	All Ages	1975-1979	-6.0 <sup>c</sup>	1979-1988	-1.7 <sup>c</sup>	1988-1998	0.6 <sup>c</sup>	1998-2002	-1.1
All Races	Under 50	1975-1984	-3.6 <sup>c</sup>	1984-2002	0.5 <sup>c</sup>				
All Races	50 and Over	1975-1979	-6.2 <sup>c</sup>	1979-1988	-1.7 <sup>c</sup>	1988-1998	0.6 <sup>c</sup>	1998-2002	-1.4
White	All Ages	1975-1979	-6.1 <sup>c</sup>	1979-1988	-1.7 <sup>c</sup>	1988-1998	0.7 <sup>c</sup>	1998-2002	-1.5
White	Under 50	1975-1983	-3.9 <sup>c</sup>	1983-2002	0.0				
White	50 and Over	1975-1979	-6.2 <sup>c</sup>	1979-1988	-1.7 <sup>c</sup>	1988-1998	0.7 <sup>c</sup>	1998-2002	-1.7
Black	All Ages	1975-2000	-0.1	2000-2002	13.0				
Black	Under 50	1975-1999	-0.7	1999-2002	21.5				
Black	50 and Over	1975-2002	0.3						
<u>SEER Delay-Adjusted Incidence<sup>a</sup></u>									
All Races	All Ages	1975-1979	-6.0 <sup>c</sup>	1979-1988	-1.7 <sup>c</sup>	1988-1997	0.7 <sup>c</sup>	1997-2002	-0.6
White	All Ages	1975-1979	-6.1 <sup>c</sup>	1979-1988	-1.6 <sup>c</sup>	1988-1998	0.7 <sup>c</sup>	1998-2002	-1.1
Black	All Ages	1975-2000	0.0	2000-2002	14.0				
<u>U.S. Cancer Mortality<sup>b</sup></u>									
All Races	All Ages	1975-1989	-1.6 <sup>c</sup>	1989-1997	-0.7 <sup>c</sup>	1997-2002	0.5		
All Races	Under 50	1975-1988	-4.0 <sup>c</sup>	1988-2002	0.6				
All Races	50 and Over	1975-1983	-1.1 <sup>c</sup>	1983-1987	-2.3 <sup>c</sup>	1987-1997	-0.8 <sup>c</sup>	1997-2002	0.4
White	All Ages	1975-1991	-1.7 <sup>c</sup>	1991-2002	-0.2				
White	Under 50	1975-1987	-4.0 <sup>c</sup>	1987-2002	0.5				
White	50 and Over	1975-1991	-1.6 <sup>c</sup>	1991-2002	-0.3				
Black	All Ages	1975-1998	-0.8 <sup>c</sup>	1998-2002	1.8				
Black	Under 50	1975-1995	-4.5 <sup>c</sup>	1995-2002	2.9				
Black	50 and Over	1975-2002	-0.4 <sup>c</sup>						

Joinpoint Regression Program Version 3.0, April 2005, National Cancer Institute. (<http://srab.cancer.gov/joinpoint/>).

The APC is the Annual Percent Change based on rates age-adjusted to the 2000 US Std Population (19 age groups - Census P25-1130).

<sup>a</sup> Trends are from the SEER 9 areas.

<sup>b</sup> Trends are from the NCHS public use data file for the total US.

<sup>c</sup> The APC is significantly different from zero (p<.05).

Table VII-2  
CORPUS AND UTERUS, NOS CANCER (Invasive)

SEER INCIDENCE<sup>a</sup> AND U.S. DEATH<sup>b</sup> RATES, AGE-ADJUSTED AND AGE-SPECIFIC RATES, BY RACE

	Incidence <sup>a</sup>			US Death <sup>b</sup>		
	All Races, Females	White Females	Black Females	All Races, Females	White Females	Black Females
<u>AGE-SPECIFIC RATES, 1998-2002</u>						
AGE AT DIAGNOSIS/DEATH:						
<1	-	-	-	-	-	-
1-4	-	-	-	-	-	-
5-9	-	-	-	-	-	-
10-14	-	-	-	-	-	-
15-19	-	-	-	-	-	-
20-24	-	-	-	-	-	-
25-29	1.5	1.4	-	0.1	-	-
30-34	3.2	2.8	-	0.2	0.2	-
35-39	6.4	6.0	5.7	0.4	0.4	0.5
40-44	12.9	12.8	7.7	0.8	0.8	1.1
45-49	23.7	23.7	15.3	1.8	1.7	2.1
50-54	47.5	50.9	26.1	3.6	3.5	4.7
55-59	68.9	73.9	37.8	6.5	6.2	10.1
60-64	90.1	94.9	82.1	10.9	9.9	20.2
65-69	96.8	103.2	88.5	15.7	13.9	33.7
70-74	95.4	100.3	88.7	20.4	18.8	40.5
75-79	92.6	98.1	75.0	24.4	23.0	43.4
80-84	95.0	100.4	76.6	29.6	28.6	46.0
85+	67.8	69.3	56.0	34.8	34.1	47.8
<u>AGE-ADJUSTED RATES, 1998-2002</u>						
AGE AT DIAGNOSIS/DEATH:						
All ages	25.0	26.2	19.3	4.1	3.9	7.0
Under 65	15.4	16.0	10.5	1.4	1.3	2.1
65 and over	91.7	96.8	80.0	23.0	21.6	40.9
All ages(IARC world std) <sup>c</sup>	18.2	19.1	14.0	2.5	2.3	4.4

<sup>a</sup> SEER 9 areas. Rates are per 100,000 and are age-adjusted to the 2000 US Std Population (19 age groups - Census P25-1130), unless noted.

<sup>b</sup> NCHS public use data file for the total US. Rates are per 100,000 and are age-adjusted to the 2000 US Std Population (19 age groups - Census P25-1130), unless noted.

<sup>c</sup> Rates are per 100,000 and are age-adjusted to the IARC world standard population.

- Statistic not shown. Rate based on less than 25 cases for the time interval.

Table VII-3  
CORPUS AND UTERUS, NOS CANCER (Invasive)

SEER INCIDENCE<sup>a</sup> AND U.S. DEATH<sup>b</sup> RATES, AGE-ADJUSTED RATES, BY RACE AND AGE

	All Races, Females			White Females			Black Females		
	All	<50	50+	All	<50	50+	All	<50	50+
<u>SEER INCIDENCE RATES</u>									
YEAR OF DIAGNOSIS:									
1975	35.5	6.5	111.3	37.3	6.9	117.1	19.9	-	62.5
1976	34.4	6.2	108.1	36.2	6.3	114.7	17.6	-	55.1
1977	31.6	5.7	99.6	33.1	5.9	104.5	20.1	-	63.4
1978	30.1	6.1	92.8	31.7	6.3	98.1	18.6	-	57.5
1979	27.9	5.3	87.0	29.2	5.3	91.7	16.8	-	50.5
1980	27.3	5.0	85.8	28.5	5.0	90.2	16.2	-	52.1
1981	27.3	5.6	84.0	28.3	5.5	88.3	17.4	-	55.5
1982	26.8	5.0	83.7	28.2	5.2	88.4	17.1	-	55.2
1983	26.5	4.8	83.4	27.8	4.9	87.7	18.8	-	59.2
1984	25.7	4.6	80.9	27.1	4.8	85.5	17.4	-	58.4
1985	25.2	4.6	79.2	26.5	4.8	83.4	17.5	-	57.5
1986	24.4	4.8	75.6	25.7	5.0	79.7	16.7	-	53.8
1987	24.7	5.0	76.4	26.2	5.3	80.8	15.5	-	51.7
1988	23.6	4.5	73.4	24.6	4.4	77.3	16.9	3.0	53.3
1989	24.4	4.5	76.6	25.5	4.8	79.7	19.4	-	65.5
1990	25.1	4.6	78.7	26.6	4.8	83.5	16.9	-	55.3
1991	24.6	4.4	77.5	25.9	4.4	82.1	17.6	3.3	55.0
1992	24.8	4.8	77.2	26.2	4.8	82.1	16.9	2.8	54.1
1993	24.3	5.2	74.5	25.7	5.1	79.5	17.1	3.6	52.6
1994	25.1	5.0	77.8	26.3	5.0	81.9	17.8	2.6	57.6
1995	25.3	4.7	79.4	26.5	4.6	83.6	18.7	2.7	60.6
1996	24.9	4.5	78.2	25.9	4.4	82.3	19.2	3.2	61.2
1997	25.8	5.0	80.4	27.3	5.0	85.6	16.3	2.4	52.8
1998	25.7	4.8	80.4	27.0	4.8	85.3	19.3	3.0	62.0
1999	25.3	5.2	77.9	26.7	5.1	83.4	17.3	2.8	55.2
2000	24.7	5.2	75.9	26.1	5.3	80.6	17.9	3.0	56.9
2001	25.1	5.1	77.4	26.5	5.0	83.0	18.9	4.0	58.1
2002	24.5	4.9	75.8	24.9	4.5	78.4	22.9	4.8	70.5
<u>U.S. DEATH RATES</u>									
YEAR OF DEATH:									
1975	5.3	0.5	17.7	5.1	0.5	17.1	7.8	0.9	25.8
1976	5.3	0.5	17.9	5.1	0.5	17.2	8.1	0.9	27.0
1977	5.2	0.5	17.5	5.0	0.5	16.7	8.4	0.8	28.0
1978	5.1	0.5	17.1	4.8	0.5	16.2	8.2	0.8	27.3
1979	5.0	0.4	17.0	4.7	0.4	16.2	7.9	0.7	26.7
1980	5.1	0.4	17.4	4.8	0.4	16.5	8.4	0.9	28.1
1981	4.9	0.4	16.6	4.7	0.4	15.9	7.3	0.6	25.1
1982	4.9	0.4	16.5	4.6	0.4	15.7	7.6	0.4	26.4
1983	4.8	0.4	16.4	4.6	0.3	15.8	7.3	0.6	24.8
1984	4.7	0.4	16.0	4.4	0.3	15.2	7.7	0.7	26.1
1985	4.6	0.4	15.7	4.4	0.3	15.0	7.4	0.5	25.3
1986	4.4	0.3	15.2	4.2	0.3	14.4	7.3	0.6	24.9
1987	4.4	0.3	15.1	4.2	0.3	14.3	7.3	0.5	25.1
1988	4.3	0.3	14.9	4.1	0.3	14.0	7.4	0.5	25.6
1989	4.3	0.3	14.5	4.0	0.3	13.6	7.3	0.5	25.0
1990	4.3	0.3	14.8	4.1	0.3	13.9	7.4	0.4	25.6
1991	4.2	0.3	14.2	3.9	0.3	13.3	7.3	0.5	25.1
1992	4.2	0.3	14.4	4.0	0.3	13.6	7.0	0.4	24.1
1993	4.2	0.3	14.3	3.9	0.3	13.3	7.3	0.4	25.2
1994	4.2	0.3	14.3	3.9	0.3	13.4	7.1	0.3	24.7
1995	4.1	0.3	14.1	4.0	0.3	13.5	6.5	0.3	22.5
1996	4.1	0.3	14.1	3.9	0.3	13.2	7.2	0.4	25.0
1997	4.0	0.3	13.7	3.8	0.3	12.9	6.7	0.3	23.6
1998	4.1	0.3	14.0	3.9	0.3	13.2	6.8	0.4	23.6
1999	4.1	0.3	13.9	3.9	0.3	13.1	6.8	0.4	23.7
2000	4.1	0.4	13.9	3.8	0.3	13.0	7.2	0.4	25.1
2001	4.2	0.4	14.1	3.9	0.3	13.3	7.0	0.5	24.0
2002	4.2	0.3	14.1	3.9	0.3	13.1	7.3	0.4	25.4

<sup>a</sup> SEER 9 areas. Rates are per 100,000 and are age-adjusted to the 2000 US Std Population (19 age groups - Census P25-1130).

<sup>b</sup> NCHS public use data file for the total US. Rates are per 100,000 and are age-adjusted to the 2000 US Std Population (19 age groups - Census P25-1130), unless noted.

- Statistic not shown. Rate based on less than 25 cases for the time interval.

Table VII-4  
CORPUS AND UTERUS, NOS CANCER (Invasive)

SURVIVAL RATES, BY RACE, DIAGNOSIS YEAR, STAGE AND AGE

	All Races, Females			White Females			Black Females		
	All	<50	50+	All	<50	50+	All	<50	50+
<u>5-YR RELATIVE SURVIVAL RATES</u>									
YEAR OF DIAGNOSIS:									
1960-1963 <sup>a</sup>	-	-	-	73	-	-	31	-	-
1970-1973 <sup>a</sup>	-	-	-	81	-	-	44	-	-
1974-1976 <sup>b</sup>	87.9	92.2	87.4	88.8	92.9	88.3	61.5	84.0 <sup>e</sup>	56.6
1977-1979 <sup>b</sup>	85.0	92.2	84.1	86.3	93.0	85.5	57.8	82.5 <sup>e</sup>	52.1
1980-1982 <sup>b</sup>	81.6	91.1	80.4	82.8	92.4	81.7	55.0	85.3 <sup>e</sup>	50.1
1983-1985 <sup>b</sup>	82.9	92.5	81.6	84.5	93.3	83.4	54.6	81.2 <sup>e</sup>	50.6
1986-1988 <sup>b</sup>	83.0	92.5	81.5	84.5	92.6	83.3	57.0	86.4	51.8
1989-1991 <sup>b</sup>	83.8	88.7	83.1	85.7	90.9	84.9	57.9	72.3 <sup>e</sup>	55.1
1992-1994 <sup>b</sup>	84.3	90.1	83.2	86.3	91.6	85.4	55.9	80.7	49.9
1995-2001 <sup>b</sup>	84.4 <sup>d</sup>	89.3 <sup>d</sup>	83.5 <sup>d</sup>	86.2 <sup>d</sup>	90.7	85.5 <sup>d</sup>	61.8	77.2	58.4
1995-2001 <sup>b</sup>									
All Stages	84.4	89.3	83.5	86.2	90.7	85.5	61.8	77.2	58.4
Localized	96.1	96.5	96.0	96.8	97.3	96.8	85.3	88.8	84.2
Regional	66.3	80.2	63.6	69.2	83.7	66.6	40.0	54.9 <sup>e</sup>	37.2
Distant	25.2	36.1	23.3	27.0	36.1	25.5	14.9	-	13.4
Unstaged	57.3	83.1	52.5	57.5	86.8	52.8	52.7 <sup>e</sup>	-	47.7 <sup>e</sup>
<u>5-YR PERIOD SURVIVAL RATES<sup>bc</sup></u>									
YEAR OF DIAGNOSIS:									
1995-2001	84.8	88.6	84.0	86.6	90.1	86.0	60.9	72.5	57.8
<u>STAGE DISTRIBUTION (%) 1995-2001<sup>b</sup></u>									
All Stages									
Number of cases	20,281	3,018	17,263	17,497	2,321	15,176	1,318	232	1,086
Percent	100%	100%	100%	100%	100%	100%	100%	100%	100%
Localized	72	73	71	73	73	73	54	65	52
Regional	16	16	16	16	16	15	22	19	23
Distant	8	7	8	8	7	8	16	8	18
Unstaged	4	4	4	4	4	4	7	8	7
<u>5-YR RELATIVE SURVIVAL RATES, 1995-2001<sup>b</sup></u>									
AGE AT DIAGNOSIS:									
<45	89.7	-	-	90.0	-	-	80.9	-	-
45-54	90.1	-	-	91.6	-	-	76.4	-	-
55-64	88.3	-	-	90.8	-	-	62.0	-	-
65-74	82.2	-	-	84.5	-	-	53.5	-	-
75+	73.4	-	-	75.5	-	-	45.5	-	-
Under 65	89.2	-	-	91.0	-	-	70.5	-	-
65 and over	78.7	-	-	80.8	-	-	50.8	-	-

<sup>a</sup> Rates are based on End Results data from a series of hospital registries and one population-based registry.

<sup>b</sup> Rates are from the SEER 9 areas (San Francisco, Connecticut, Detroit, Hawaii, Iowa, New Mexico, Seattle, Utah, Atlanta). Rates are based on follow-up of patients into 2002.

<sup>c</sup> Period survival provides a more up-to-date estimate of survival by piecing together the most recent conditional survival estimates from several cohorts. It is computed here using three calendar year blocks (1999-2001: 0-1 year survival), (1998-2000: 1-2 year survival), (1997-1999: 2-3 year survival), (1996-1998: 3-4 year survival), (1995-1997: 4-5 years survival).

<sup>d</sup> The difference in rates between 1974-1976 and 1995-2001 is statistically significant (p<.05).

<sup>e</sup> The standard error of the survival rate is between 5 and 10 percentage points.

<sup>f</sup> The standard error of the survival rate is greater than 10 percentage points.

- Statistic could not be calculated.

Table VII-5  
CORPUS AND UTERUS, NOS CANCER (Invasive)

SURVIVAL RATES<sup>a</sup>

By Year of Diagnosis

All Races, Females

Year of Diagnosis

	1975- 1979	1980- 1984	1985	1986	1987	1988	1989	1990	1991	1992	1993	1994	1995	1996	1997	1998	1999	2000	2001
Relative Survival Rates (SEER <sup>b</sup> )																			
1-year	93.9	91.7	93.2	93.1	92.1	92.3	92.3	92.7	92.1	93.1	92.5	92.0	93.3	92.0	93.3	93.6	94.1	94.0	92.5
2-year	90.3	86.7	88.2	87.1	87.5	88.4	88.1	88.2	88.1	89.8	88.6	87.4	88.8	88.5	89.4	89.9	89.6	89.8	
3-year	88.1	84.1	85.5	85.4	84.5	85.5	85.9	85.4	85.8	87.5	86.0	85.1	86.6	86.4	86.5	86.9	87.6		
4-year	86.7	82.9	83.8	84.1	83.7	83.9	84.9	84.1	84.2	86.3	84.8	83.6	85.4	85.6	85.8	85.1			
5-year	86.4	82.0	83.5	83.1	82.6	83.3	84.3	83.5	83.8	86.1	83.8	82.9	84.9	84.4	84.9				
6-year	86.0	81.6	83.0	82.6	81.6	82.9	83.7	82.4	82.7	85.3	83.3	82.0	84.4	83.7					
7-year	85.8	81.3	82.2	82.3	81.6	82.6	83.7	82.3	82.7	85.3	83.1	81.3	84.0						
8-year	85.8	80.9	82.0	82.3	81.6	82.6	82.8	82.2	82.2	85.0	82.2	80.7							
9-year	85.8	80.8	81.8	82.3	81.6	82.4	82.8	82.2	82.0	85.0	82.2								
10-year	85.8	80.7	81.8	82.2	81.6	81.9	82.8	81.8	82.0	84.9									
11-year	85.8	80.5	81.8	82.2	81.6	81.9	82.7	81.8	82.0										
12-year	85.8	80.5	81.8	82.2	81.6	81.9	82.1	81.4											
13-year	85.8	80.5	81.5	82.2	81.6	81.8	81.5												
14-year	85.8	80.4	81.2	82.2	81.6	81.5													
15-year	85.8	80.3	81.2	82.2	80.7														
16-year	85.8	79.8	81.0	82.0															
17-year	85.8	79.8	80.6																
18-year	85.8	79.5																	
19-year	85.8																		
20-year	85.8																		

<sup>a</sup> Survival rates are relative rates expressed as percents.  
<sup>b</sup> Rates are from the SEER 9 areas.

Table VII-6  
CORPUS AND UTERUS, NOS CANCER (Invasive)

Percent Diagnosed With Cancer In 10, 20 and 30 Years and In Remaining Lifetime,  
Given Cancer Free At Current Age By Race

Lifetime Risk (Percent) of Being Diagnosed (13 SEER Areas) With Cancer and  
Lifetime Risk (Percent) of Dying (Total U.S.) From Cancer

2000-2002

All Races

Current Age	+10 yrs	+20 yrs	+30 yrs	Eventually
0	0.00	0.00	0.01	2.61
10	0.00	0.01	0.06	2.64
20	0.01	0.06	0.25	2.64
30	0.05	0.24	0.76	2.65
40	0.19	0.72	1.50	2.62
50	0.54	1.33	2.02	2.48
60	0.83	1.55	1.97	2.04

Lifetime Risk of Being Diagnosed = 2.61%  
Lifetime Risk of Dying = 0.51%

Whites

Current Age	+10 yrs	+20 yrs	+30 yrs	Eventually
0	0.00	0.00	0.01	2.79
10	0.00	0.01	0.06	2.81
20	0.01	0.06	0.25	2.82
30	0.05	0.24	0.80	2.82
40	0.19	0.75	1.59	2.79
50	0.57	1.43	2.17	2.65
60	0.90	1.67	2.11	2.18

Lifetime Risk of Being Diagnosed = 2.79%  
Lifetime Risk of Dying = 0.48%

Blacks

Current Age	+10 yrs	+20 yrs	+30 yrs	Eventually
0	0.00	0.00	0.01	1.87
10	0.00	0.01	0.06	1.92
20	0.01	0.06	0.19	1.92
30	0.05	0.18	0.50	1.93
40	0.13	0.46	1.12	1.91
50	0.34	1.03	1.56	1.86
60	0.75	1.33	1.61	1.65

Lifetime Risk of Being Diagnosed = 1.87%  
Lifetime Risk of Dying = 0.75%

Devcan Version 6.0, April 2005, National Cancer Institute (<http://srab.cancer.gov/devcan/>).

Source: Incidence data are from the SEER 13 areas (San Francisco, Connecticut, Detroit, Hawaii, Iowa, New Mexico, Seattle, Utah, Atlanta, San Jose-Monterey, Los Angeles, Alaska Native Registry, Rural Georgia). Mortality data are from the NCHS public use data file for the total US.

Table VII-7  
CORPUS AND UTERUS, NOS CANCER (Invasive)

SEER INCIDENCE AND U.S. MORTALITY  
AGE-ADJUSTED RATES AND TRENDS<sup>a</sup>  
By Race/Ethnicity

Incidence<sup>b</sup>

RACE/ETHNICITY	Rate 1998-2002	Trend 1992-2002
	Rate per 100,000 persons	APC (%)
	Females	Females
All Races	24.2	-0.2
White	25.7	-0.3
White Hispanic <sup>c</sup>	17.5	0.6
White Non-Hispanic <sup>c</sup>	26.6	-0.4
Black	19.0	1.8 <sup>e</sup>
Asian/Pacific Islander	17.5	1.6 <sup>e</sup>
Amer Ind/Alaska Nat	10.5	-
Hispanic <sup>c</sup>	16.8	0.7

Mortality<sup>d</sup>

RACE/ETHNICITY	Rate 1998-2002	Trend 1992-2002
	Rate per 100,000 persons	APC (%)
	Females	Females
All Races	4.1	-0.1
White	3.9	-0.2
White Hispanic <sup>c</sup>	3.4	0.6
White Non-Hispanic <sup>c</sup>	3.8	-0.2
Black	7.0	0.2
Asian/Pacific Islander	2.2	1.4
Amer Ind/Alaska Nat	2.5	0.3
Hispanic <sup>c</sup>	3.3	0.6

- The APC is the Annual Percent Change over the time interval.
- Statistic not shown. Rate based on less than 25 cases for the time interval. Trend based on less than 10 cases for at least one year within the time interval.
- <sup>a</sup> Rates are age-adjusted to the 2000 US Std Population (19 age groups - Census P25-1130). Trends are based on rates age-adjusted to the 2000 US Std Population (19 age groups - Census P25-1130).
- <sup>b</sup> Incidence data are from the 13 SEER areas (San Francisco, Connecticut, Detroit, Hawaii, Iowa, New Mexico, Seattle, Utah, Atlanta, San Jose-Monterey, Los Angeles, Alaska Native Registry and Rural Georgia).
- <sup>c</sup> Hispanic and Non-Hispanic are not mutually exclusive from Whites, Blacks, Asian Pacific Islanders, and American Indians/Alaska Natives. Incidence data for Hispanics and Non-Hispanics do not include cases from Detroit, Hawaii, Alaska Native Registry and Rural Georgia. For mortality, information is included for all states except Connecticut, Maine, Maryland, Minnesota, New Hampshire, New York, North Dakota, Oklahoma and Vermont.
- <sup>d</sup> Mortality data are analyzed from a public use file provided by the National Center for Health Statistics (NCHS).
- <sup>e</sup> The APC is significantly different from zero (p<.05).

Table VII-8  
CORPUS AND UTERUS, NOS CANCER (Invasive)

AGE-ADJUSTED SEER INCIDENCE RATES AND SEER DEATH RATES<sup>a</sup>  
By Registry, Race and Age

	All Races, Females			White Females			Black Females		
	All	<50	50+	All	<50	50+	All	<50	50+
<u>SEER INCIDENCE RATES<sup>b</sup>, 1998-2002</u>									
REGISTRY									
13 SEER Areas	24.2	5.0	74.6	25.7	5.0	79.9	19.0	3.5	59.8
11 SEER Areas	24.3	5.0	74.7	25.7	5.0	80.0	19.1	3.5	60.1
9 SEER Areas	25.0	5.0	77.5	26.2	4.9	82.1	19.3	3.5	60.7
San Francisco-Oakland	24.7	4.4	77.7	26.6	3.9	85.9	21.0	4.3	64.5
Connecticut	28.5	5.3	89.2	29.3	5.4	91.9	18.3	-	56.3
Metropolitan Detroit	26.4	5.1	82.3	28.3	5.5	87.9	21.4	4.2	66.6
Hawaii	24.8	9.7	64.4	25.6	5.6	78.2	-	-	-
Iowa	27.6	5.5	85.5	27.8	5.6	86.1	-	-	-
New Mexico	19.0	4.8	56.0	19.3	4.4	58.1	-	-	-
Seattle-Puget Sound	25.6	4.6	80.6	26.6	4.6	84.3	19.1	-	66.0
Utah	23.2	5.0	70.7	23.4	5.0	71.6	-	-	-
Metropolitan Atlanta	19.7	3.9	61.1	21.4	4.5	65.6	16.9	3.0	53.4
San Jose-Monterey	22.0	3.9	69.5	24.4	4.1	77.9	-	-	-
Los Angeles	22.5	5.3	67.3	24.2	5.4	73.4	19.1	3.5	60.2
<u>SEER DEATH RATES<sup>c</sup>, 1998-2002</u>									
REGISTRY									
13 SEER Areas	4.1	0.4	13.9	4.0	0.3	13.8	6.4	0.5	21.9
11 SEER Areas	4.1	0.4	13.9	4.0	0.3	13.8	6.4	0.5	21.8
9 SEER Areas	4.1	0.4	13.8	4.0	0.3	13.5	6.3	0.5	21.5
San Francisco-Oakland	4.2	0.3	14.2	4.5	-	15.4	6.1	-	21.9
Connecticut	3.9	0.4	13.0	3.8	-	13.0	5.6	-	17.0
Metropolitan Detroit	4.7	0.5	15.6	4.1	0.5	13.6	7.1	-	24.2
Hawaii	3.7	-	11.3	-	-	-	-	-	-
Iowa	4.2	-	13.9	4.2	-	13.9	-	-	-
New Mexico	3.9	-	12.9	3.8	-	13.0	-	-	-
Seattle-Puget Sound	4.0	0.3	13.6	4.0	-	13.6	-	-	-
Utah	4.0	-	13.6	3.9	-	13.6	-	-	-
Metropolitan Atlanta	3.8	-	13.3	3.3	-	11.3	5.6	-	19.3
San Jose-Monterey	3.7	-	12.9	3.8	-	13.2	-	-	-
Los Angeles	4.3	0.4	14.5	4.3	0.3	14.8	6.8	-	22.7

<sup>a</sup> Incidence and death rates are per 100,000 and are age-adjusted to the 2000 US Std Population (19 age groups - Census P25-1130).

<sup>b</sup> The SEER 9 areas are San Francisco, Connecticut, Detroit, Hawaii, Iowa, New Mexico, Seattle, Utah, and Atlanta. The SEER 11 areas comprise the SEER 9 areas plus San Jose-Monterey and Los Angeles. The SEER 13 areas comprise the SEER 11 areas plus the Alaska Native Registry and Rural Georgia.

<sup>c</sup> NCHS public use data file for the total US with analyses limited to the SEER geographic areas.

- Statistic could not be calculated or populations are inadequate.



Table VII-9  
CORPUS AND UTERUS, NOS CANCER (Invasive)

AVERAGE ANNUAL AGE-ADJUSTED CANCER DEATH<sup>a</sup> RATES BY STATE, ALL RACES, 1998-2002

All Ages

State	Rate	SE	Rank	PD
TOTAL U.S.	4.1	0.02		
High Five States				
District of Columbia	8.3 <sup>bc</sup>	0.71	(01)	102.4
New Jersey	5.2 <sup>bc</sup>	0.14	(02)	26.8
Vermont	5.0 <sup>b</sup>	0.53	(03)	22.0
New York	4.8 <sup>bc</sup>	0.09	(04)	17.1
Pennsylvania	4.7 <sup>c</sup>	0.11	(05)	14.6
Low Five States				
Rhode Island	3.3 <sup>b</sup>	0.32	(47)	-19.5
Colorado	3.3 <sup>bc</sup>	0.18	(48)	-19.5
Nevada	3.3 <sup>b</sup>	0.27	(49)	-19.5
Alaska	3.2 <sup>b</sup>	0.64	(50)	-22.0
Arizona	2.8 <sup>bc</sup>	0.14	(51)	-31.7

Ages <50

State	Rate	SE	Rank	PD
TOTAL U.S.	0.3	0.01		
High Five States				
Hawaii	0.8 <sup>b</sup>	0.19	(01)	166.7
Vermont	0.7 <sup>b</sup>	0.25	(02)	133.3
District of Columbia	0.7 <sup>b</sup>	0.25	(03)	133.3
Nevada	0.5 <sup>b</sup>	0.13	(04)	66.7
West Virginia	0.5 <sup>b</sup>	0.13	(05)	66.7
Low Five States				
Alaska	0.2 <sup>b</sup>	0.14	(47)	-33.3
Oregon	0.2 <sup>b</sup>	0.06	(48)	-33.3
Minnesota	0.2 <sup>b</sup>	0.05	(49)	-33.3
Idaho	0.1 <sup>b</sup>	0.08	(50)	-66.7
Delaware	0.1 <sup>b</sup>	0.10	(51)	-66.7

Ages 50+

State	Rate	SE	Rank	PD
TOTAL U.S.	14.0	0.08		
High Five States				
District of Columbia	28.2 <sup>bc</sup>	2.47	(01)	101.4
New Jersey	17.8 <sup>bc</sup>	0.50	(02)	27.1
Vermont	16.4 <sup>b</sup>	1.82	(03)	17.1
New York	16.3 <sup>bc</sup>	0.32	(04)	16.4
Pennsylvania	16.1 <sup>bc</sup>	0.37	(05)	15.0
Low Five States				
Hawaii	11.3 <sup>b</sup>	1.09	(47)	-19.3
Arkansas	11.1 <sup>bc</sup>	0.69	(48)	-20.7
Alaska	10.9 <sup>b</sup>	2.28	(49)	-22.1
Nevada	10.3 <sup>bc</sup>	0.90	(50)	-26.4
Arizona	9.5 <sup>bc</sup>	0.49	(51)	-32.1

For additional detailed cancer statistics by state, please visit the State Cancer Profiles website. <http://statecancerprofiles.cancer.gov/>

<sup>a</sup> NCHS public use data file. Rates are per 100,000 and are age-adjusted to the 2000 US Std Population (19 age groups - Census P25-1130).  
<sup>b</sup> Absolute percent difference between state rate and total U.S. rate is 15% or more.  
<sup>c</sup> Difference between state rate and total U.S. rate is statistically significant (p<=.0002).  
SE Standard error of the rate.  
PD Percent difference between state rate and total U.S. rate.

Table VII-10  
CORPUS AND UTERUS, NOS CANCER (Invasive)

Estimated United States Cancer Prevalence Counts<sup>a</sup> on January 1, 2002  
By Race/Ethnicity and Years Since Diagnosis

Years Since Diagnosis	0 to <5	5 to <10	10 to <15	15 to <20	20 to <25	0 to <12 <sup>e</sup>	0 to <27 <sup>e</sup>	>=27 <sup>g</sup>	Complete <sup>h</sup>
<u>Race</u>									
All Races <sup>b</sup>	142,978	107,011	82,698	66,457	59,049	286,056	485,208	86,646	571,854
White <sup>b</sup>	128,991	98,524	77,506	63,042	56,043	261,377	450,038	77,528	527,566
Black <sup>b</sup>	8,216	4,725	3,129	1,989	1,583	14,288	20,156	1,709	21,865
Asian/Pacific Islander <sup>c</sup>	3,446	2,161	+	+	+	6,165	+	+	+
Hispanic <sup>d</sup>	6,431	4,028	+	+	+	11,849	+	+	+

Estimated prevalence percent<sup>a</sup> on January 1, 2002, of the SEER 11 population diagnosed in the previous 10 years  
By Age at Prevalence and Race/Ethnicity

Age at Prevalence	All Ages	0-9	10-19	20-29	Age Specific (Crude)						Age-Adjusted <sup>f</sup>
					30-39	40-49	50-59	60-69	70-79	80+	All Ages
<u>Race</u>											
All Races <sup>c</sup>	0.1507%	-	0.0002%	0.0021%	0.0192%	0.0829%	0.2841%	0.5886%	0.6828%	0.5803%	0.1503%
White <sup>c</sup>	0.1726%	-	-	0.0020%	0.0189%	0.0832%	0.3064%	0.6600%	0.7572%	0.6340%	0.1641%
Black <sup>c</sup>	0.0647%	-	-	0.0018%	0.0164%	0.0471%	0.1289%	0.3418%	0.4219%	0.2676%	0.0836%
Asian/Pacific Islander <sup>c</sup>	0.0980%	-	-	0.0031%	0.0198%	0.1085%	0.2661%	0.3171%	0.3214%	0.2518%	0.1003%
Hispanic <sup>d</sup>	0.0566%	-	-	0.0029%	0.0237%	0.0722%	0.2003%	0.3630%	0.3734%	0.3087%	0.0965%

<sup>a</sup> US 2002 cancer prevalence counts are based on 2002 cancer prevalence proportions from the SEER registries and 1/1/2002 US population estimates based on the average of 2001 and 2002 population estimates from the US Bureau of the Census. Prevalence was calculated using the First Malignant Primary Only for a person.

<sup>b c d</sup> Statistics based on <sup>b</sup> SEER 9 Areas <sup>c</sup> SEER 11 Areas and Rural Georgia <sup>d</sup> SEER 11 Areas excluding Hawaii and Detroit.  
<sup>e</sup> Maximum limited-duration prevalence: 27 years for 1975-2002 SEER 9 data; 12 years for 1990-2002 SEER 11 data (used to calculate prevalence for Hispanics and Asian Pacific Islanders).

<sup>f</sup> Percentages are age-adjusted to the 2000 US standard population by 5-year age groups.

<sup>g h</sup> (g) Cases diagnosed more than 27 years ago were estimated using the completeness index method (Capocaccia et. al. 1997, Merrill et. al. 2000). (h) Complete prevalence is obtained by summing 0 to <27 and >=27.

- Statistic not shown. Statistic based on fewer than 5 cases estimated alive in SEER for the time interval.

+ Not available.

# SEER Incidence, Delay Adjusted Incidence and US Death Rates+ Corpus and Uterus, NOS Cancer, by Race

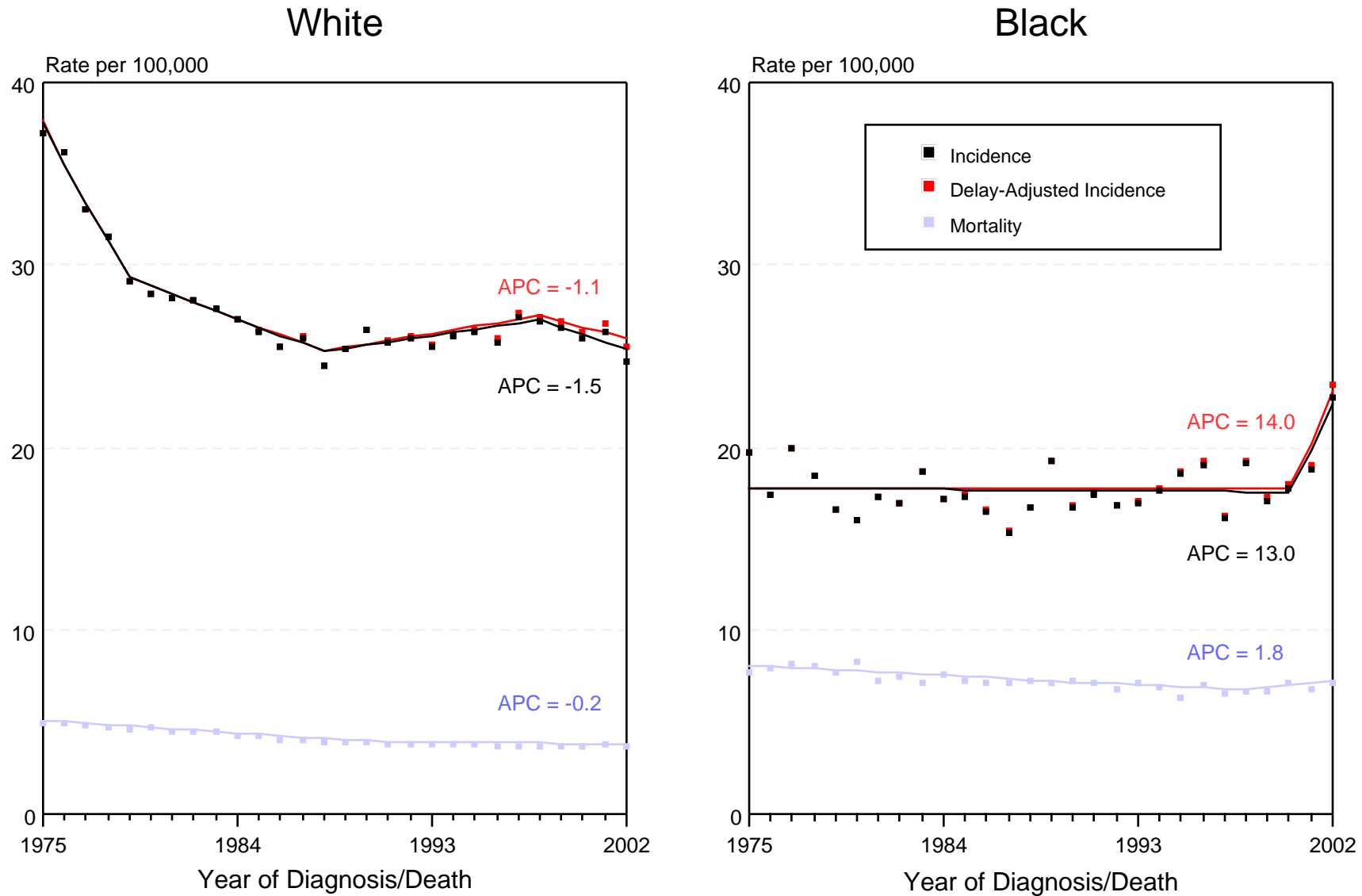


Figure VII-1

- + Source: SEER 9 areas and NCHS public use data file for the total US. Rates are age-adjusted to the 2000 US Std Population (19 age groups - Census P25-1103). Regression lines and APCs are calculated using the Joinpoint Regression Program Version 3.0, April 2005, National Cancer Institute. The APC is the Annual Percent Change for the regression line segments. The APC shown on the graph is for the most recent trend.
- \* The APC is significantly different from zero ( $p < 0.05$ ).

## SEER Incidence and US Death Rates+ Corpus and Uterus, NOS Cancer, by Age and Race

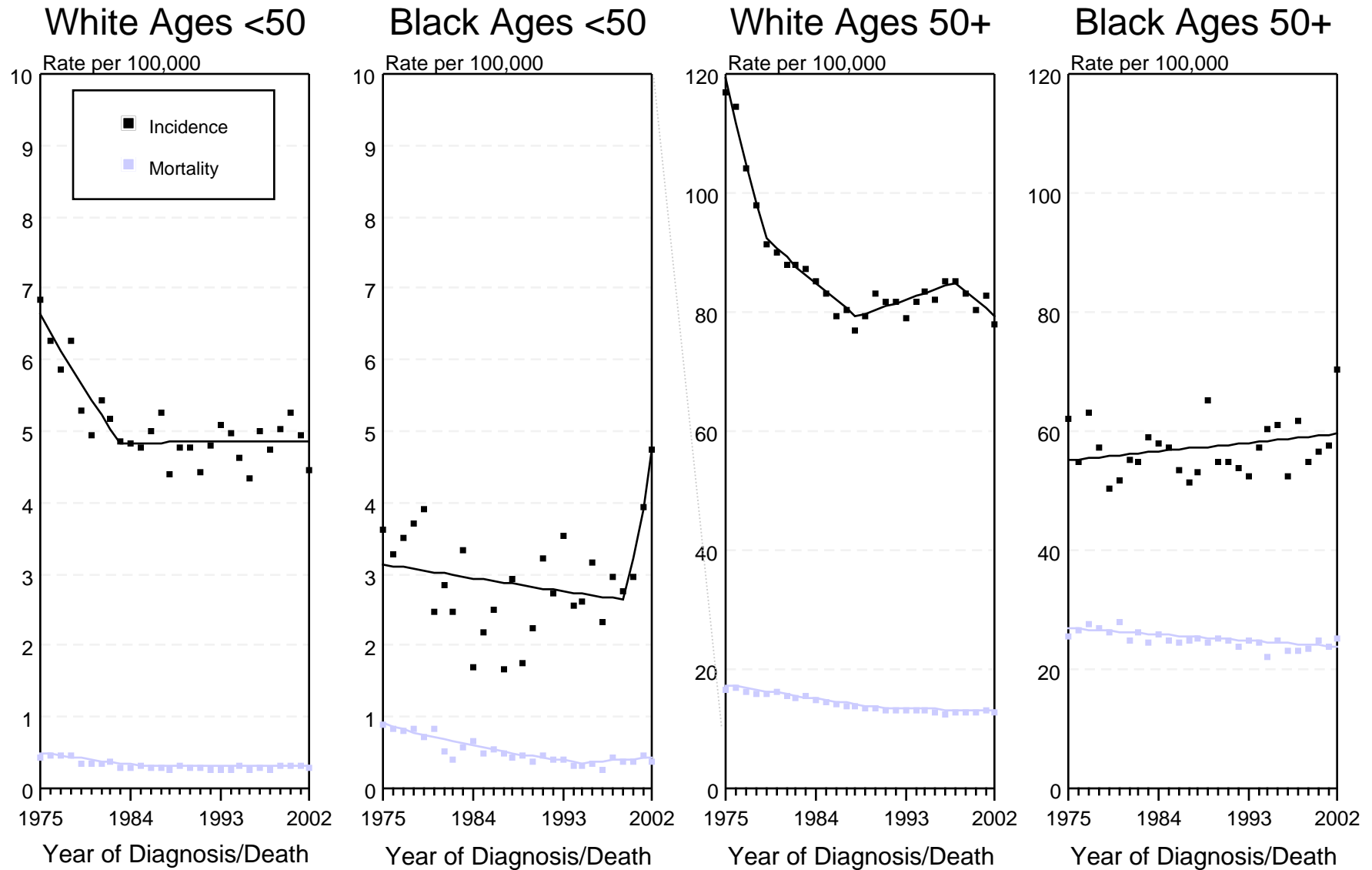


Figure VII-2

+ Source: SEER 9 areas and NCHS public use data file for the total US. Rates are age-adjusted to the 2000 US Std Population (19 age groups - Census P25-1103). Regression lines are calculated using the Joinpoint Regression Program Version 3.0, April 2005, National Cancer Institute.

# SEER Incidence and US Death Rates + Corpus and Uterus, NOS Cancer

Joinpoint Analyses for 1975-2002 for Whites and Blacks

Rates for 1992-2002 for Asian/Pacific Islander, American Indian/Alaska Native and Hispanic

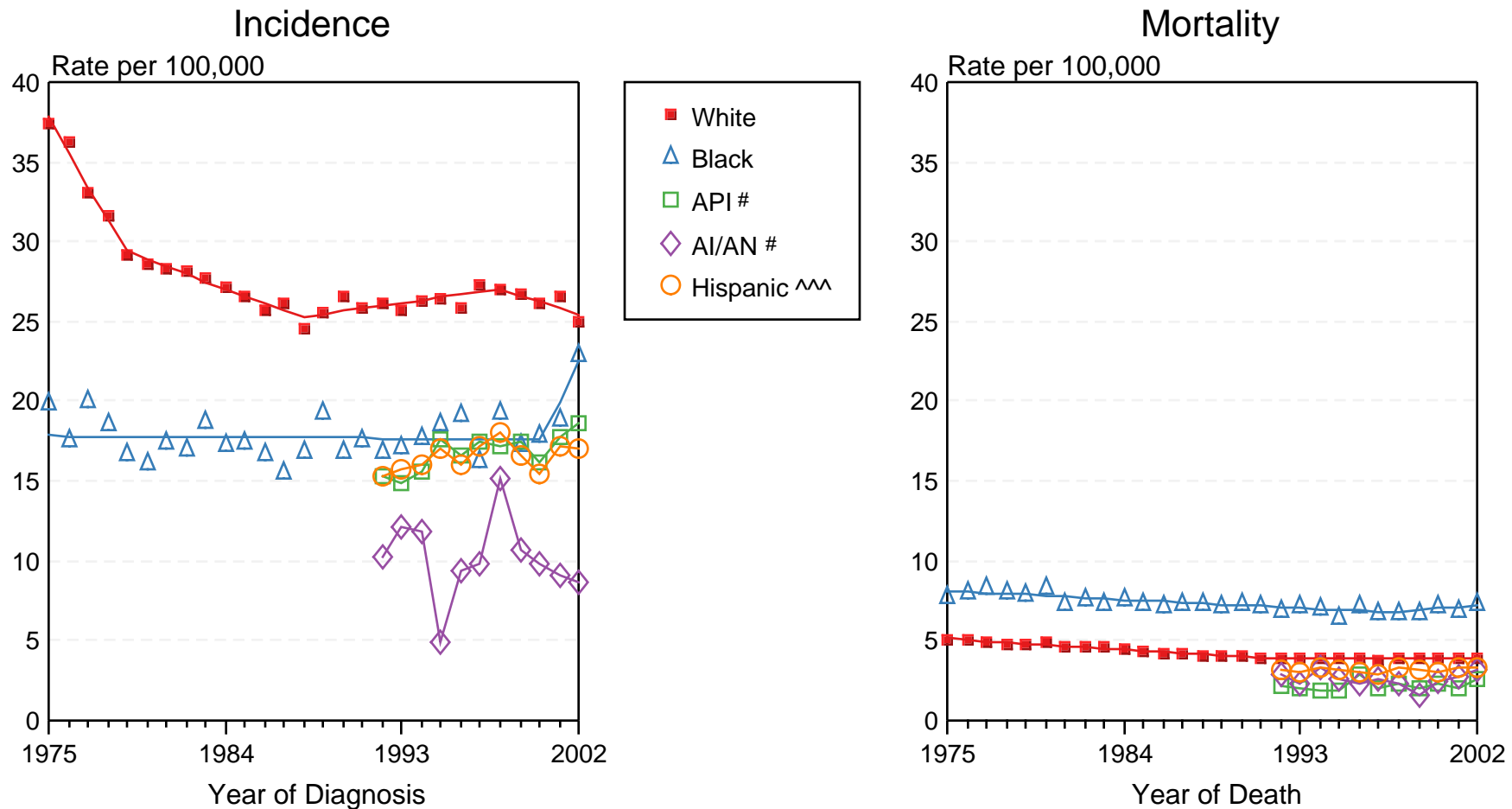


Figure VII-3

+ Source: Incidence data for whites and blacks is from the SEER 9 areas (San Francisco, Connecticut, Detroit, Hawaii, Iowa, New Mexico, Seattle, Utah, Atlanta). Incidence data for Asian/Pacific Islanders, American Indian/Alaska Natives and Hispanics is from the SEER 13 Areas (SEER 9 Areas, San Jose-Monterey, Los Angeles, Alaska Native Registry and Rural Georgia). Mortality data is from NCHS public use data file for the total US. Rates are age-adjusted to the 2000 US Std Population (19 age groups - Census P25-1103). Regression lines for whites and blacks are calculated using the Joinpoint Regression Program Version 3.0, April 2005, National Cancer Institute.

# API = Asian/Pacific Islander. AI/AN = American Indian/Alaska Native.

^^ Hispanic is not mutually exclusive from Whites, Blacks, Asian/Pacific Islanders, and American Indians/Alaska Natives. Incidence data for Hispanics excludes cases from Detroit, Hawaii, Alaska Native Registry and Rural Georgia. Mortality data for Hispanics excludes cases from Connecticut, Maine, Maryland, Minnesota, Oklahoma, New Hampshire, New York, North Dakota, and Vermont.