

Table XIX-1
NON-HODGKIN LYMPHOMA

TRENDS IN SEER INCIDENCE^a AND U.S. MORTALITY^b USING THE JOINPOINT REGRESSION PROGRAM, 1975-2005
WITH UP TO THREE JOINPOINTS BY RACE AND SEX

		Joinpoint Trend 1		Joinpoint Trend 2		Joinpoint Trend 3		Joinpoint Trend 4		AAPC ^c	
		Years	APC	Years	APC	Years	APC	Years	APC	1996-2005	2001-2005
<u>SEER Cancer Incidence^a</u>											
All Races	Both Sexes	1975-1991	3.6*	1991-2005	0.5*					0.5*	0.5*
All Races	Male	1975-1991	4.2*	1991-2005	0.2					0.2	0.2
All Races	Female	1975-1990	2.9*	1990-2005	1.0*					1.0*	1.0*
White	Both Sexes	1975-1990	3.8*	1990-2005	0.6*					0.6*	0.6*
White	Male	1975-1990	4.5*	1990-2005	0.4*					0.4*	0.4*
White	Female	1975-1990	2.9*	1990-2005	1.1*					1.1*	1.1*
Black	Both Sexes	1975-1992	4.9*	1992-2005	0.8					0.8	0.8
Black	Male	1975-1994	5.5*	1994-2005	-0.9					-0.9	-0.9
Black	Female	1975-2005	2.7*							2.7*	2.7*
<u>SEER Delay-Adjusted Incidence^a</u>											
All Races	Both Sexes	1975-1991	3.6*	1991-2005	0.7*					0.7*	0.7*
All Races	Male	1975-1991	4.2*	1991-2005	0.4*					0.4*	0.4*
All Races	Female	1975-1990	2.8*	1990-2005	1.2*					1.2*	1.2*
White	Both Sexes	1975-1990	3.8*	1990-2005	0.8*					0.8*	0.8*
White	Male	1975-1990	4.5*	1990-2005	0.5*					0.5*	0.5*
White	Female	1975-1990	2.9*	1990-2005	1.2*					1.2*	1.2*
Black	Both Sexes	1975-1995	4.7*	1995-1999	-3.1	1999-2005	3.5*			1.2	3.5*
Black	Male	1975-1994	5.5*	1994-2005	-0.6					-0.6	-0.6
Black	Female	1975-2005	2.9*							2.9*	2.9*
<u>U.S. Cancer Mortality^b</u>											
All Races	Both Sexes	1975-1991	2.5*	1991-1997	1.6*	1997-2005	-3.2*			-2.7*	-3.2*
All Races	Male	1975-1991	2.7*	1991-1997	1.6*	1997-2005	-3.0*			-2.5*	-3.0*
All Races	Female	1975-1995	2.2*	1995-1998	-0.3	1998-2005	-3.7*			-3.0*	-3.7*
White	Both Sexes	1975-1991	2.5*	1991-1997	1.7*	1997-2005	-3.2*			-2.7*	-3.2*
White	Male	1975-1996	2.5*	1996-2005	-2.6*					-2.6*	-2.6*
White	Female	1975-1997	2.1*	1997-2005	-3.8*					-3.2*	-3.8*
Black	Both Sexes	1975-1997	2.6*	1997-2005	-3.4*					-2.8*	-3.4*
Black	Male	1975-1997	2.7*	1997-2005	-4.1*					-3.4*	-4.1*
Black	Female	1975-1997	2.6*	1997-2005	-2.7*					-2.2*	-2.7*

Joinpoint Regression Program Version 3.3.1, April 2008, National Cancer Institute. (<http://srab.cancer.gov/joinpoint/>).
The APC is the Annual Percent Change based on rates age-adjusted to the 2000 US Std Population (19 age groups - Census P25-1130).
Trends are from the SEER 9 areas (San Francisco, Connecticut, Detroit, Hawaii, Iowa, New Mexico, Seattle, Utah, and Atlanta).
Trends are from US Mortality Files, National Center for Health Statistics, Centers for Disease Control and Prevention.
The AAPC is the Average Annual Percent Change and is based on the APCs calculated by Joinpoint over the time range of 1975-2005.
The APC/AAPC is significantly different from zero (p<.05).

a
b
c
*

Table XIX-1a
NON-HODGKIN LYMPHOMATRENDS IN SEER INCIDENCE^a AND U.S. MORTALITY^b USING THE JOINTPOINT REGRESSION PROGRAM, 1975-2005
WITH UP TO FOUR JOINTPOINTS BY RACE AND SEX

		Jointpoint Trend 1		Jointpoint Trend 2		Jointpoint Trend 3		Jointpoint Trend 4		Jointpoint Trend 5		AAPC ^c
		Years	APC	Years	APC	Years	APC	Years	APC	Years	APC	2001-2005
<u>SEER Cancer Incidence^a</u>												
All Races	Both Sexes	1975-1991	3.6*	1991-2005	0.5*							0.5*
All Races	Male	1975-1991	4.2*	1991-2005	0.2							0.2
All Races	Female	1975-1990	2.9*	1990-2005	1.0*							1.0*
White	Both Sexes	1975-1990	3.8*	1990-2005	0.6*							0.6*
White	Male	1975-1990	4.5*	1990-2005	0.4*							0.4*
White	Female	1975-1990	2.9*	1990-2005	1.1*							1.1*
Black	Both Sexes	1975-1992	4.9*	1992-2005	0.8							0.8
Black	Male	1975-1994	5.5*	1994-2005	-0.9							-0.9
Black	Female	1975-2005	2.7*									2.7*
<u>SEER Delay-Adjusted Incidence^a</u>												
All Races	Both Sexes	1975-1991	3.6*	1991-2005	0.7*							0.7*
All Races	Male	1975-1991	4.2*	1991-2005	0.4*							0.4*
All Races	Female	1975-1990	2.8*	1990-2005	1.2*							1.2*
White	Both Sexes	1975-1990	3.8*	1990-2005	0.8*							0.8*
White	Male	1975-1990	4.5*	1990-2005	0.5*							0.5*
White	Female	1975-1990	2.9*	1990-2005	1.2*							1.2*
Black	Both Sexes	1975-1992	4.9*	1992-2005	1.1*							1.1*
Black	Male	1975-1994	5.5*	1994-2005	-0.6							-0.6
Black	Female	1975-2005	2.9*									2.9*
<u>U.S. Cancer Mortality^b</u>												
All Races	Both Sexes	1975-1991	2.5*	1991-1997	1.6*	1997-2005	-3.2*					-3.2*
All Races	Male	1975-1991	2.7*	1991-1997	1.6*	1997-2005	-3.0*					-3.0*
All Races	Female	1975-1995	2.2*	1995-1998	-0.3	1998-2005	-3.7*					-3.7*
White	Both Sexes	1975-1991	2.5*	1991-1997	1.7*	1997-2005	-3.2*					-3.2*
White	Male	1975-1996	2.5*	1996-2005	-2.6*							-2.6*
White	Female	1975-1997	2.1*	1997-2005	-3.8*							-3.8*
Black	Both Sexes	1975-1997	2.6*	1997-2005	-3.4*							-3.4*
Black	Male	1975-1997	2.7*	1997-2005	-4.1*							-4.1*
Black	Female	1975-1997	2.6*	1997-2005	-2.7*							-2.7*

Jointpoint Regression Program Version 3.3.1, April 2008, National Cancer Institute. (<http://srab.cancer.gov/joinpoint/>).

The APC is the Annual Percent Change based on rates age-adjusted to the 2000 US Std Population (19 age groups - Census P25-1130).

Trends are from the SEER 9 areas (San Francisco, Connecticut, Detroit, Hawaii, Iowa, New Mexico, Seattle, Utah, and Atlanta).

Trends are from US Mortality Files, National Center for Health Statistics, Centers for Disease Control and Prevention.

The AAPC is the Average Annual Percent Change and is based on the APCs calculated by Jointpoint over the time range of 1975-2005.

The APC/AAPC is significantly different from zero ($p < .05$).

a
b
c
*

Table XIX-2
NON-HODGKIN LYMPHOMA

AGE ADJUSTED SEER INCIDENCE^a RATES BY YEAR, RACE AND SEX

	All Races			Whites			Blacks		
	Total	Males	Females	Total	Males	Females	Total	Males	Females
<u>AGE-ADJUSTED RATES</u>									
YEAR OF DIAGNOSIS:									
1975	11.1	12.9	9.6	11.6	13.5	10.1	6.4	7.3	5.3
1976	11.2	12.8	10.0	11.6	13.3	10.5	6.0	7.4	4.9
1977	11.2	12.9	9.8	11.7	13.5	10.2	6.6	7.2	6.1
1978	11.9	14.3	10.1	12.5	14.8	10.7	7.2	9.5	5.2
1979	12.5	14.2	11.2	13.0	14.6	11.8	8.4	11.8	5.9
1980	12.6	15.0	10.8	13.0	15.3	11.2	8.8	10.9	7.2
1981	13.6	15.9	11.8	14.0	16.3	12.3	7.4	10.5	5.0
1982	13.4	15.5	11.6	14.0	16.4	12.1	10.3	10.2	10.0
1983	14.0	16.6	12.0	14.6	17.5	12.4	10.3	10.9	9.6
1984	15.2	18.3	12.8	15.9	19.1	13.5	9.5	12.5	6.9
1985	15.5	18.4	13.2	16.3	19.2	13.9	9.9	12.0	8.3
1986	15.9	19.4	13.0	16.8	20.5	13.8	10.6	13.1	8.5
1987	16.7	20.8	13.4	17.7	22.1	14.0	10.4	10.4	10.1
1988	17.2	21.3	14.1	18.2	22.4	14.9	11.6	15.8	8.5
1989	17.3	21.6	13.8	18.3	23.0	14.5	11.7	14.2	9.8
1990	18.5	23.0	14.8	19.4	24.0	15.5	13.8	17.5	10.9
1991	18.8	23.7	14.6	19.7	24.8	15.3	14.0	18.8	10.3
1992	18.6	23.0	15.0	19.6	24.0	15.9	13.6	18.7	9.6
1993	18.8	23.5	15.0	19.6	24.3	15.7	14.0	19.3	9.6
1994	19.9	24.9	15.7	20.6	25.6	16.5	14.3	21.4	8.6
1995	19.9	25.3	15.3	20.6	26.1	15.9	16.5	23.4	11.3
1996	19.3	24.2	15.4	20.2	25.2	16.1	15.2	18.9	12.0
1997	19.9	24.4	16.4	20.8	25.1	17.4	16.2	23.7	10.9
1998	19.5	22.8	16.7	20.5	23.9	17.6	14.0	16.3	12.2
1999	19.8	24.4	16.1	20.7	25.3	17.1	14.1	18.1	11.0
2000	19.6	24.1	15.9	20.7	25.4	16.9	13.9	18.4	10.6
2001	19.8	24.2	16.2	20.6	25.2	16.8	15.5	18.0	13.4
2002	19.9	23.8	16.8	20.9	25.0	17.6	14.3	17.2	12.1
2003	20.3	24.3	17.3	21.4	25.5	18.2	15.8	19.1	13.4
2004	20.8	25.1	17.5	21.7	26.0	18.3	17.7	22.9	14.0
2005	19.9	24.4	16.4	21.1	25.6	17.5	15.5	18.4	13.1
1975-2005	17.4	21.2	14.3	18.1	22.0	14.9	12.8	16.3	10.1

^a SEER 9 areas (San Francisco, Connecticut, Detroit, Hawaii, Iowa, New Mexico, Seattle, Utah, and Atlanta). Rates are per 100,000 and are age-adjusted to the 2000 US Std Population (19 age groups - Census P25-1130).

- Statistic not shown. Rate based on less than 16 cases for the time interval.

Table XIX-3
NON-HODGKIN LYMPHOMA

AGE-ADJUSTED U.S. DEATH^a RATES BY YEAR, RACE AND SEX

	All Races			Whites			Blacks		
	Total	Males	Females	Total	Males	Females	Total	Males	Females
<u>AGE-ADJUSTED RATES</u>									
YEAR OF DEATH:									
1975	5.6	6.9	4.6	5.8	7.2	4.8	3.7	4.8	2.9
1976	5.7	6.9	4.8	5.9	7.1	5.0	3.5	4.5	2.8
1977	5.8	6.9	4.9	6.0	7.1	5.1	3.9	4.9	3.1
1978	5.9	7.3	4.9	6.2	7.5	5.1	3.9	5.4	2.8
1979	5.9	7.4	4.9	6.2	7.7	5.1	3.6	4.5	3.0
1980	6.2	7.5	5.3	6.5	7.7	5.5	4.0	5.1	3.1
1981	6.2	7.4	5.3	6.4	7.7	5.5	4.0	5.0	3.3
1982	6.6	8.0	5.5	6.8	8.3	5.7	4.1	5.2	3.3
1983	6.7	8.1	5.6	6.9	8.4	5.8	4.3	5.8	3.2
1984	6.8	8.2	5.8	7.1	8.5	6.0	4.2	5.3	3.4
1985	7.1	8.8	5.8	7.3	9.2	6.0	4.6	5.6	3.9
1986	7.3	9.0	6.0	7.6	9.3	6.3	4.9	6.6	3.7
1987	7.3	8.8	6.1	7.6	9.1	6.4	4.7	6.3	3.6
1988	7.5	9.3	6.2	7.8	9.6	6.5	5.0	6.8	3.7
1989	7.8	9.7	6.4	8.1	10.0	6.7	5.3	7.1	4.1
1990	7.9	10.0	6.3	8.2	10.3	6.6	5.4	7.1	4.2
1991	8.2	10.1	6.7	8.5	10.5	7.0	5.7	7.2	4.6
1992	8.2	10.3	6.7	8.5	10.7	7.0	5.6	7.2	4.5
1993	8.2	10.1	6.9	8.6	10.5	7.2	5.7	7.5	4.4
1994	8.6	10.8	7.1	9.0	11.2	7.4	5.5	6.8	4.6
1995	8.7	10.8	7.2	9.1	11.2	7.5	5.8	7.6	4.5
1996	8.8	10.9	7.1	9.1	11.3	7.5	6.2	8.2	4.7
1997	8.9	11.0	7.3	9.2	11.4	7.6	6.3	8.4	4.9
1998	8.7	10.9	7.1	9.0	11.3	7.4	6.0	7.5	4.9
1999	8.3	10.4	6.9	8.7	10.7	7.2	5.7	7.4	4.4
2000	8.2	10.2	6.7	8.5	10.6	7.0	5.2	6.6	4.2
2001	7.9	9.9	6.4	8.2	10.3	6.7	5.6	7.3	4.5
2002	7.6	9.6	6.2	7.9	10.0	6.4	5.4	6.9	4.4
2003	7.3	9.3	5.9	7.6	9.7	6.1	4.9	5.8	4.3
2004	7.0	8.9	5.7	7.3	9.2	5.9	5.0	6.2	4.1
2005	6.9	8.8	5.5	7.2	9.1	5.7	4.8	6.1	3.8
1975-2005	7.5	9.3	6.2	7.8	9.7	6.4	5.0	6.5	4.0

^a US Mortality Files, National Center for Health Statistics, Centers for Disease Control and Prevention. Rates are per 100,000 and are age-adjusted to the 2000 US Std Population (19 age groups - Census P25-1130).

- Statistic not shown. Rate based on less than 16 cases for the time interval.

Table XIX-4
NON-HODGKIN LYMPHOMA

SEER INCIDENCE^a AND U.S. DEATH^b RATES, AGE-ADJUSTED AND AGE-SPECIFIC RATES, BY RACE AND SEX

	All Races			Whites			Blacks		
	Total	Males	Females	Total	Males	Females	Total	Males	Females
<u>SEER INCIDENCE</u>									
<u>AGE AT DIAGNOSIS</u>									
AGE-ADJUSTED RATES, 2001-2005									
All ages	19.5	23.5	16.3	20.3	24.3	17.1	14.9	18.4	12.1
Under 65	9.5	11.4	7.7	9.8	11.6	7.9	9.7	12.2	7.4
65 and over	88.4	107.0	75.7	93.2	112.4	80.2	51.2	61.2	44.8
All ages(IARC world std) ^c	13.0	15.5	10.9	13.5	16.1	11.3	10.8	13.4	8.7
AGE-SPECIFIC RATES, 2001-2005									
<1	-	-	-	-	-	-	-	-	-
1-4	0.6	0.7	0.4	0.6	0.8	0.4	-	-	-
5-9	0.9	1.3	0.5	0.9	1.4	0.5	0.9	1.1	-
10-14	1.3	1.5	0.9	1.2	1.5	1.0	1.1	1.4	-
15-19	1.8	2.3	1.3	1.8	2.4	1.2	1.9	2.4	1.4
20-24	2.4	2.9	1.9	2.3	2.8	1.7	2.8	2.9	2.7
25-29	3.5	4.0	2.9	3.4	3.9	2.9	4.3	5.8	2.9
30-34	4.7	5.6	3.8	4.7	5.7	3.7	6.0	7.2	4.9
35-39	7.3	9.1	5.5	7.2	8.9	5.4	10.4	13.4	7.7
40-44	10.3	13.1	7.5	10.4	13.2	7.5	12.2	16.3	8.5
45-49	15.3	18.5	12.2	15.5	18.8	12.2	17.1	21.5	13.3
50-54	22.6	26.9	18.5	23.1	27.2	19.0	24.0	31.5	17.7
55-59	31.8	36.2	27.7	32.9	37.1	28.9	27.8	36.2	21.0
60-64	46.2	53.9	39.2	49.0	56.9	41.6	33.5	38.7	29.3
65-69	62.9	72.8	54.4	66.8	76.4	58.3	43.1	50.5	37.5
70-74	81.4	95.2	70.3	86.2	100.7	74.3	52.3	63.3	44.7
75-79	100.4	120.9	85.8	105.6	126.2	90.8	57.3	69.6	49.7
80-84	116.1	144.2	98.5	122.4	151.6	104.2	54.0	66.7	47.0
85+	106.0	140.1	90.3	110.9	147.1	94.4	52.7	59.4	49.9
<u>U.S. MORTALITY</u>									
<u>AGE AT DEATH</u>									
AGE-ADJUSTED RATES, 2001-2005									
All ages	7.3	9.3	5.9	7.6	9.7	6.2	5.1	6.4	4.2
Under 65	2.1	2.7	1.6	2.1	2.7	1.6	2.3	3.0	1.7
65 and over	43.5	54.9	36.0	45.8	57.7	37.8	24.5	30.0	21.2
All ages(IARC world std) ^c	4.2	5.3	3.3	4.3	5.4	3.4	3.3	4.2	2.6
AGE-SPECIFIC RATES, 2001-2005									
<1	-	-	-	-	-	-	-	-	-
1-4	0.0	0.0	-	0.0	-	-	-	-	-
5-9	0.1	0.1	0.0	0.1	0.1	0.1	-	-	-
10-14	0.1	0.2	0.1	0.1	0.2	0.1	0.2	0.3	-
15-19	0.3	0.3	0.2	0.2	0.3	0.1	0.3	0.4	0.3
20-24	0.4	0.5	0.3	0.4	0.5	0.3	0.6	0.7	0.5
25-29	0.6	0.7	0.4	0.5	0.6	0.4	0.9	1.0	0.9
30-34	0.7	0.9	0.6	0.7	0.8	0.5	1.3	1.8	0.8
35-39	1.1	1.4	0.8	1.1	1.4	0.7	1.5	2.0	1.1
40-44	1.7	2.3	1.2	1.7	2.3	1.1	2.3	3.1	1.6
45-49	2.9	3.8	2.1	2.9	3.7	2.0	3.7	4.9	2.7
50-54	4.9	6.3	3.5	4.8	6.2	3.5	5.8	7.9	4.1
55-59	8.3	10.5	6.3	8.6	10.8	6.4	8.0	10.4	6.1
60-64	13.9	17.3	10.8	14.4	17.9	11.2	12.0	15.4	9.4
65-69	21.6	27.6	16.4	22.7	28.9	17.1	16.2	20.4	13.0
70-74	33.4	41.6	26.9	35.1	43.5	28.2	22.8	29.6	18.2
75-79	48.7	59.9	40.7	51.4	63.1	42.9	26.0	29.6	23.8
80-84	66.2	82.8	56.1	69.7	87.2	59.0	32.5	38.9	29.2
85+	77.3	101.6	66.6	81.6	107.5	70.2	34.7	42.4	31.7

^a SEER 17 areas. Rates are per 100,000 and are age-adjusted to the 2000 US Std Population (19 age groups - Census P25-1130), unless noted.

^b US Mortality Files, National Center for Health Statistics, Centers for Disease Control and Prevention. Rates are per 100,000 and are age-adjusted to the 2000 US Std Population (19 age groups - Census P25-1130), unless noted.

^c Rates are per 100,000 and are age-adjusted to the IARC world standard population.

- Statistic not shown. Rate based on less than 16 cases for the time interval.

Table XIX-5
NON-HODGKIN LYMPHOMA

SURVIVAL RATES, BY RACE, SEX, DIAGNOSIS YEAR AND AGE

	<u>All Races</u>			<u>Whites</u>			<u>Blacks</u>		
	<u>Total</u>	<u>Males</u>	<u>Females</u>	<u>Total</u>	<u>Males</u>	<u>Females</u>	<u>Total</u>	<u>Males</u>	<u>Females</u>
<u>5-YR RELATIVE SURVIVAL RATES</u>									
YEAR OF DIAGNOSIS:									
1960-1963 ^a	-	-	-	31	31	31	-	-	-
1970-1973 ^a	-	-	-	41	39	43	-	-	-
1975-1977 ^b	47.9	46.8	49.0	48.3	47.8	48.9	48.8	42.0	56.1 ^f
1978-1980 ^b	49.9	47.9	51.9	50.0	48.2	51.7	52.3	48.0	58.1 ^f
1981-1983 ^b	52.5	52.2	52.9	52.8	52.5	53.2	50.4	49.5	51.5
1984-1986 ^b	53.3	51.4	55.4	53.7	52.0	55.6	47.7	44.9	51.3
1987-1989 ^b	52.4	48.7	56.9	52.8	49.2	57.2	47.4	42.2	53.7
1990-1992 ^b	51.9	47.4	57.8	52.9	48.3	58.8	42.0	38.1	47.5
1993-1995 ^b	53.6	49.3	59.4	54.5	50.4	59.7	42.0	35.3	54.8
1996-2004 ^b	64.9 ^e	62.7 ^e	67.4 ^e	65.9 ^e	63.9 ^e	68.1 ^e	57.6	53.9	62.4
<u>5-YR PERIOD SURVIVAL RATES^{cd}</u>									
YEAR OF DIAGNOSIS:									
1996-2004	67.2	64.9	69.9	67.9	65.7	70.5	59.0	54.5	64.4
<u>5-YR RELATIVE SURVIVAL RATES, 1996-2004^c</u>									
AGE AT DIAGNOSIS:									
<45	71.3	67.2	78.6	73.4	69.1	81.3	57.0	52.9	63.9
45-54	73.0	68.7	79.3	74.7	70.5	81.0	58.3	52.4	66.5
55-64	69.6	65.8	74.4	70.4	66.9	74.8	60.7	53.2	68.8
65-74	61.5	57.6	65.5	62.1	57.9	66.3	53.2	48.5	57.5
75+	49.2	47.5	50.3	49.8	47.8	51.2	41.9	46.6 ^f	38.1
Under 65	71.3	67.3	77.2	72.7	68.9	78.6	58.4	53.0	66.1
65 and over	55.7	53.4	57.8	56.3	53.6	58.5	48.7	48.0	48.8

^a Rates are based on End Results data from a series of hospital registries and one population-based registry.
^b Rates are from the SEER 9 areas (San Francisco, Connecticut, Detroit, Hawaii, Iowa, New Mexico, Seattle, Utah, Atlanta).
Rates are based on follow-up of patients into 2005.
^c Rates are from the SEER 17 areas (San Francisco, Connecticut, Detroit, Hawaii, Iowa, New Mexico, Seattle, Utah, Atlanta, San Jose-Monterey, Los Angeles, Alaska Native Registry, Rural Georgia, California excluding SF/SJM/LA, Kentucky, Louisiana and New Jersey). California excluding SF/SJM/LA, Kentucky, Louisiana, and New Jersey contribute cases for diagnosis years 2000-2004. The remaining 13 SEER Areas contribute cases for the entire period 1996-2004. Rates are based on follow-up of patients into 2005.
^d Period survival provides a more up-to-date estimate of survival by piecing together the most recent conditional survival estimates from several cohorts. It is computed here using three calendar year blocks (2002-2004: 0-1 year survival), (2001-2003: 1-2 year survival), (2000-2002: 2-3 year survival), (1999-2001: 3-4 year survival), (1998-2000: 4-5 years survival).
^e The difference in rates between 1975-1977 and 1996-2004 is statistically significant (p<.05).
^f The standard error of the survival rate is between 5 and 10 percentage points.
^g The standard error of the survival rate is greater than 10 percentage points.
- Statistic could not be calculated due to fewer than 16 cases during the time period.

Table XIX-6
NON-HODGKIN LYMPHOMA

SURVIVAL RATES^a

By Year of Diagnosis

All Races, Males and Females

Year of Diagnosis

	1975- 1979	1980- 1984	1985	1986	1987	1988	1989	1990	1991	1992	1993	1994	1995	1996	1997	1998	1999	2000	2001	2002	2003	2004
Relative Survival Rates (SEER ^b)																						
1-year	71.3	74.1	73.0	71.1	73.3	72.0	71.4	70.9	70.4	71.5	71.9	71.4	70.8	73.9	76.4	77.3	78.0	77.6	79.2	81.3	80.7	81.5
2-year	61.1	64.8	64.4	62.8	64.3	63.0	63.2	61.8	61.6	63.0	64.1	63.8	62.5	66.4	68.8	70.6	71.6	72.0	73.8	76.4	76.2	
3-year	55.7	59.8	59.9	58.8	59.6	59.3	58.1	57.3	57.4	58.8	59.5	59.4	58.1	62.9	65.4	67.2	67.7	68.7	71.0	73.8		
4-year	51.9	56.1	56.3	55.0	56.4	55.2	54.7	53.4	54.8	55.6	56.7	56.1	55.4	59.7	62.8	64.8	65.6	66.7	69.2			
5-year	48.4	52.7	53.8	51.7	53.2	52.4	51.5	51.2	52.1	52.5	54.0	53.9	53.1	57.3	60.6	62.5	63.6	65.7				
6-year	45.4	49.7	51.6	49.1	50.4	50.4	48.9	48.9	49.4	50.2	51.9	52.2	51.0	55.7	58.5	60.2	61.2					
7-year	43.0	47.5	48.7	47.4	48.2	48.5	46.9	46.2	46.5	47.9	50.4	50.4	49.5	54.0	56.8	58.8						
8-year	41.0	45.6	46.8	45.3	45.9	46.4	44.1	44.3	44.3	46.5	48.5	48.9	48.0	52.4	54.9							
9-year	39.3	43.9	45.3	43.3	43.9	44.7	42.6	43.1	42.8	45.6	47.3	47.4	47.2	51.6								
10-year	38.2	42.3	43.8	41.7	42.8	43.4	40.8	42.2	41.8	44.2	46.1	45.9	46.8									
11-year	36.9	41.3	42.6	41.1	41.6	42.3	39.4	40.6	40.5	43.0	45.0	44.7										
12-year	36.0	40.2	41.5	39.7	40.3	41.0	37.9	39.3	39.8	42.2	44.2											
13-year	35.4	39.3	39.9	38.5	39.7	40.1	37.4	38.3	39.3	41.4												
14-year	34.5	38.5	38.8	37.9	38.8	39.7	36.5	37.6	38.3													
15-year	33.4	37.5	38.3	37.0	37.9	38.9	35.5	37.5														
16-year	32.7	36.7	37.4	36.2	37.7	38.4	35.1															
17-year	32.5	36.2	36.6	36.2	37.5	37.7																
18-year	32.3	35.7	36.1	36.1	37.0																	
19-year	31.8	35.3	35.3	35.0																		
20-year	31.3	34.7	35.3																			

^a Survival rates are relative rates expressed as percents.

^b Rates are from the SEER 9 areas (San Francisco, Connecticut, Detroit, Hawaii, Iowa, New Mexico, Seattle, Utah, and Atlanta).

Table XIX-7
NON-HODGKIN LYMPHOMA

SURVIVAL RATES^a

By Year of Diagnosis

All Races, Males

Year of Diagnosis

	1975- 1979	1980- 1984	1985	1986	1987	1988	1989	1990	1991	1992	1993	1994	1995	1996	1997	1998	1999	2000	2001	2002	2003	2004
Relative Survival Rates (SEER ^b)																						
1-year	70.5	73.8	71.9	70.3	69.8	68.9	68.6	66.7	66.9	68.5	68.7	68.2	67.2	71.7	75.5	75.5	76.7	76.6	78.2	81.1	80.0	80.7
2-year	60.3	64.9	63.1	61.8	61.0	60.2	59.3	57.8	57.4	58.4	59.9	60.3	58.9	63.8	67.3	68.7	69.8	70.8	71.9	75.7	75.1	
3-year	54.5	59.4	58.3	57.8	56.4	55.7	54.2	52.8	53.0	54.6	55.1	55.5	54.6	60.2	64.0	65.3	64.9	67.4	68.8	72.8		
4-year	50.6	55.5	53.8	53.3	52.9	51.5	50.5	49.1	50.4	50.9	52.0	52.1	51.8	56.7	61.2	63.1	62.5	64.8	66.7			
5-year	47.0	52.0	50.7	50.0	50.0	48.9	47.2	46.9	48.3	46.9	49.1	49.7	49.1	54.3	58.9	60.6	60.5	63.2				
6-year	44.3	48.8	48.1	46.8	47.2	46.9	44.5	45.2	45.4	45.1	47.2	48.2	47.2	52.0	56.9	58.1	57.9					
7-year	42.0	46.5	45.2	45.0	45.8	45.4	41.8	42.5	42.6	42.9	46.4	46.7	45.7	50.1	55.2	56.6						
8-year	40.1	44.7	43.3	42.6	43.3	44.1	39.3	40.9	40.3	41.6	44.7	44.8	44.1	48.5	53.2							
9-year	38.2	43.1	41.5	40.8	40.9	42.6	38.0	39.6	38.7	40.6	43.6	43.1	43.3	47.8								
10-year	36.9	41.3	40.5	39.3	39.8	41.4	36.5	38.8	37.8	39.0	42.9	41.9	43.1									
11-year	35.9	40.0	39.2	38.2	38.7	40.4	35.0	37.6	36.8	38.5	41.4	41.1										
12-year	35.3	39.2	37.7	37.2	37.5	39.2	33.5	36.2	36.3	37.9	41.0											
13-year	34.3	38.5	36.2	36.1	37.3	38.6	33.1	35.1	35.8	36.8												
14-year	33.2	37.8	35.5	35.0	36.3	38.5	32.1	34.5	34.9													
15-year	32.0	37.0	35.3	33.9	35.6	37.6	31.2	34.2														
16-year	31.3	35.9	34.8	33.6	35.1	36.8	30.7															
17-year	31.0	35.5	33.7	33.6	34.3	35.3																
18-year	30.9	35.2	33.3	33.6	34.1																	
19-year	30.7	34.9	32.8	32.5																		
20-year	30.5	34.3	32.8																			

^a Survival rates are relative rates expressed as percents.

^b Rates are from the SEER 9 areas (San Francisco, Connecticut, Detroit, Hawaii, Iowa, New Mexico, Seattle, Utah, and Atlanta).

Table XIX-8
NON-HODGKIN LYMPHOMA

SURVIVAL RATES^a

By Year of Diagnosis

All Races, Females

Year of Diagnosis

	1975- 1979	1980- 1984	1985	1986	1987	1988	1989	1990	1991	1992	1993	1994	1995	1996	1997	1998	1999	2000	2001	2002	2003	2004
Relative Survival Rates (SEER ^b)																						
1-year	72.1	74.5	74.3	72.2	77.5	75.7	74.8	76.0	75.1	75.4	76.0	75.6	75.6	76.5	77.4	79.4	79.6	78.7	80.3	81.7	81.5	82.4
2-year	61.9	64.8	65.7	63.9	68.3	66.4	68.0	66.9	67.1	68.7	69.5	68.2	67.3	69.6	70.6	72.6	73.8	73.4	76.1	77.2	77.3	
3-year	56.9	60.1	61.8	60.0	63.4	63.6	62.9	62.9	63.2	64.1	65.1	64.5	62.7	66.2	67.1	69.3	71.0	70.2	73.5	75.0		
4-year	53.2	56.8	59.2	57.1	60.7	59.6	59.9	58.9	60.8	61.6	62.6	61.3	60.4	63.4	64.6	66.8	69.3	69.1	72.3			
5-year	50.0	53.4	57.2	53.7	57.2	56.7	56.7	56.4	57.3	59.5	60.2	59.4	58.5	61.0	62.6	64.8	67.3	68.6				
6-year	46.6	50.7	55.4	51.7	54.2	54.3	54.4	53.5	54.7	56.6	58.1	57.4	56.2	60.4	60.4	62.4	65.3					
7-year	44.1	48.6	52.6	50.2	51.1	52.2	53.1	50.9	51.7	54.2	55.3	55.2	54.7	59.0	58.7	61.1						
8-year	41.9	46.6	50.7	48.4	49.1	49.2	50.1	48.6	49.8	52.7	53.6	54.2	53.4	57.4	57.0							
9-year	40.4	44.8	49.4	46.3	47.5	47.2	48.4	47.6	48.6	52.0	52.1	53.1	52.5	56.6								
10-year	39.4	43.5	47.5	44.7	46.6	45.9	46.3	46.6	47.2	50.8	50.4	51.3	51.9									
11-year	37.8	42.6	46.3	44.6	45.3	44.7	45.0	44.4	45.8	48.7	49.8	49.6										
12-year	36.8	41.2	45.6	42.6	43.7	43.0	43.7	43.4	44.7	47.8	48.6											
13-year	36.4	40.1	44.2	41.4	42.6	41.8	42.9	42.5	44.3	47.3												
14-year	35.7	39.2	42.6	41.0	41.7	41.2	42.3	41.8	43.1													
15-year	34.8	38.0	41.5	40.9	40.8	40.4	41.2	41.5														
16-year	34.1	37.5	40.2	39.6	40.8	40.1	41.0															
17-year	33.9	36.9	39.8	39.5	40.8	40.1																
18-year	33.5	36.4	39.1	38.9	40.8																	
19-year	32.9	35.6	38.1	38.3																		
20-year	32.1	35.2	38.1																			

^a Survival rates are relative rates expressed as percents.

^b Rates are from the SEER 9 areas (San Francisco, Connecticut, Detroit, Hawaii, Iowa, New Mexico, Seattle, Utah, and Atlanta).

Table XIX-9

NON-HODGKIN LYMPHOMANUMBER OF CASES

By SEER Location and Year of Diagnosis, 1975-2005

All Races, Males, All Ages

SEER Location	Year of Diagnosis													
	1975- 1979	1980- 1981	1982- 1983	1984- 1985	1986- 1987	1988- 1989	1990- 1991	1992- 1993	1994- 1995	1996- 1997	1998- 1999	2000- 2001	2002- 2003	2004- 2005
SEER 9 ^b	5224	2504	2701	3173	3625	3987	4572	4727	5313	5234	5235	5517	5681	6066
SEER 9 except SF-Oakland	4284	2086	2264	2598	2817	3085	3508	3692	4150	4224	4342	4474	4744	5074
San Francisco- Oakland SMSA ^c	940	418	437	575	808	902	1064	1035	1163	1010	893	1043	937	992
San Francisco City/County	245	96	123	210	326	393	467	410	449	353	213	255	218	278

AGE-ADJUSTED CANCER INCIDENCE RATES^a

By SEER Location and Year of Diagnosis, 1975-2005

All Races, Males, All Ages

SEER Location	Year of Diagnosis													
	1975- 1979	1980- 1981	1982- 1983	1984- 1985	1986- 1987	1988- 1989	1990- 1991	1992- 1993	1994- 1995	1996- 1997	1998- 1999	2000- 2001	2002- 2003	2004- 2005
SEER 9 ^b	13.4	15.5	16.1	18.3	20.1	21.5	23.4	23.2	25.1	24.3	23.7	24.1	24.0	24.8
SEER 9 except SF-Oakland	13.2	15.4	16.1	18.1	18.8	20.0	21.7	21.8	23.5	23.4	23.4	23.3	23.9	24.6
San Francisco- Oakland SMSA ^c	14.8	15.8	16.0	19.5	26.7	28.5	31.7	30.5	33.4	28.7	25.0	28.4	24.8	25.5
San Francisco City/County	14.3	14.4	17.6	29.3	44.5	51.9	61.0	52.3	57.3	44.7	27.4	32.3	26.6	34.6

^a Rates are per 100,000 males and are age-adjusted to the 2000 US Std Population (19 age groups - Census P25-1130).^b The SEER 9 areas are San Francisco-Oakland SMSA, Connecticut, Detroit, Hawaii, Iowa, New Mexico, Seattle, Utah and Atlanta.^c The San Francisco-Oakland SMSA represents 15% of all persons in the SEER areas. For this age group, all SEER areas may not be generalizable to the United States for Non-Hodgkin Lymphoma.

- Statistic not shown. Rate based on less than 4 cases for the time interval.

Table XIX-10

NON-HODGKIN LYMPHOMANUMBER OF CASES

By SEER Location and Year of Diagnosis, 1975-2005

All Races, Males, Ages 0-19

SEER Location	Year of Diagnosis													
	1975- 1979	1980- 1981	1982- 1983	1984- 1985	1986- 1987	1988- 1989	1990- 1991	1992- 1993	1994- 1995	1996- 1997	1998- 1999	2000- 2001	2002- 2003	2004- 2005
SEER 9 ^b	222	88	108	89	94	85	100	88	118	105	106	119	127	106
SEER 9 except SF-Oakland	190	79	95	80	80	77	86	73	105	84	94	99	115	90
San Francisco- Oakland SMSA ^c	32	9	13	9	14	8	14	15	13	21	12	20	12	16
San Francisco City/County	9	<4	<4	<4	<4	0	<4	<4	<4	<4	<4	0	<4	<4

AGE-ADJUSTED CANCER INCIDENCE RATES^a

By SEER Location and Year of Diagnosis, 1975-2005

All Races, Males, Ages 0-19

SEER Location	Year of Diagnosis													
	1975- 1979	1980- 1981	1982- 1983	1984- 1985	1986- 1987	1988- 1989	1990- 1991	1992- 1993	1994- 1995	1996- 1997	1998- 1999	2000- 2001	2002- 2003	2004- 2005
SEER 9 ^b	1.2	1.3	1.6	1.3	1.4	1.3	1.5	1.3	1.6	1.4	1.4	1.5	1.6	1.4
SEER 9 except SF-Oakland	1.2	1.3	1.6	1.4	1.4	1.3	1.5	1.2	1.7	1.3	1.4	1.5	1.7	1.3
San Francisco- Oakland SMSA ^c	1.4	1.0	1.5	1.0	1.6	0.9	1.5	1.6	1.3	2.1	1.2	1.9	1.2	1.5
San Francisco City/County	2.3	-	-	-	-	0.0	-	-	-	-	-	0.0	-	-

^a Rates are per 100,000 males aged 0-19 and are age-adjusted to the 2000 US Std Population (19 age groups - Census P25-1130).^b The SEER 9 areas are San Francisco-Oakland SMSA, Connecticut, Detroit, Hawaii, Iowa, New Mexico, Seattle, Utah and Atlanta.^c The San Francisco-Oakland SMSA represents 15% of all persons in the SEER areas. For this age group, all SEER areas may not be generalizable to the United States for Non-Hodgkin Lymphoma.

- Statistic not shown. Rate based on less than 4 cases for the time interval.

Table XIX-11

NON-HODGKIN LYMPHOMANUMBER OF CASES

By SEER Location and Year of Diagnosis, 1975-2005

All Races, Males, Ages 20-54

SEER Location	Year of Diagnosis													
	1975- 1979	1980- 1981	1982- 1983	1984- 1985	1986- 1987	1988- 1989	1990- 1991	1992- 1993	1994- 1995	1996- 1997	1998- 1999	2000- 2001	2002- 2003	2004- 2005
SEER 9 ^b	1466	686	722	955	1209	1409	1766	1831	2080	1752	1604	1672	1592	1690
SEER 9 except SF-Oakland	1208	561	587	727	825	919	1194	1293	1476	1307	1266	1304	1285	1379
San Francisco- Oakland SMSA ^c	258	125	135	228	384	490	572	538	604	445	338	368	307	311
San Francisco City/County	58	29	34	105	215	288	333	303	316	224	105	114	110	110

AGE-ADJUSTED CANCER INCIDENCE RATES^a

By SEER Location and Year of Diagnosis, 1975-2005

All Races, Males, Ages 20-54

SEER Location	Year of Diagnosis													
	1975- 1979	1980- 1981	1982- 1983	1984- 1985	1986- 1987	1988- 1989	1990- 1991	1992- 1993	1994- 1995	1996- 1997	1998- 1999	2000- 2001	2002- 2003	2004- 2005
SEER 9 ^b	6.9	7.9	8.2	10.4	12.4	13.5	15.9	15.6	16.8	13.7	12.1	12.2	11.3	11.8
SEER 9 except SF-Oakland	6.9	7.8	8.1	9.7	10.2	10.8	13.1	13.4	14.3	12.2	11.5	11.3	10.9	11.5
San Francisco- Oakland SMSA ^c	7.0	8.5	8.9	13.9	22.6	26.4	29.6	26.8	29.6	21.3	15.5	16.3	13.4	13.8
San Francisco City/County	6.7	8.8	9.4	27.2	56.6	71.5	81.3	72.3	74.2	50.8	23.0	24.9	23.5	24.2

^a Rates are per 100,000 males aged 20-54 and are age-adjusted to the 2000 US Std Population (19 age groups - Census P25-1130).^b The SEER 9 areas are San Francisco-Oakland SMSA, Connecticut, Detroit, Hawaii, Iowa, New Mexico, Seattle, Utah and Atlanta.^c The San Francisco-Oakland SMSA represents 15% of all persons in the SEER areas. For this age group, all SEER areas may not be generalizable to the United States for Non-Hodgkin Lymphoma.

- Statistic not shown. Rate based on less than 4 cases for the time interval.

Table XIX-12

NON-HODGKIN LYMPHOMANUMBER OF CASES

By SEER Location and Year of Diagnosis, 1975-2005

All Races, Males, Ages 55+

SEER Location	Year of Diagnosis													
	1975- 1979	1980- 1981	1982- 1983	1984- 1985	1986- 1987	1988- 1989	1990- 1991	1992- 1993	1994- 1995	1996- 1997	1998- 1999	2000- 2001	2002- 2003	2004- 2005
SEER 9 ^b	3536	1730	1871	2129	2322	2493	2706	2808	3115	3377	3525	3726	3962	4270
SEER 9 except SF-Oakland	2886	1446	1582	1791	1912	2089	2228	2326	2569	2833	2982	3071	3344	3605
San Francisco- Oakland SMSA ^c	650	284	289	338	410	404	478	482	546	544	543	655	618	665
San Francisco City/County	178	65	88	104	109	105	132	106	130	126	106	141	107	165

AGE-ADJUSTED CANCER INCIDENCE RATES^a

By SEER Location and Year of Diagnosis, 1975-2005

All Races, Males, Ages 55+

SEER Location	Year of Diagnosis													
	1975- 1979	1980- 1981	1982- 1983	1984- 1985	1986- 1987	1988- 1989	1990- 1991	1992- 1993	1994- 1995	1996- 1997	1998- 1999	2000- 2001	2002- 2003	2004- 2005
SEER 9 ^b	45.2	52.2	53.9	59.7	63.3	67.2	70.1	70.6	76.1	79.9	80.5	82.5	83.9	86.4
SEER 9 except SF-Oakland	44.0	52.0	54.3	60.1	62.0	66.6	68.8	69.2	74.4	79.5	80.8	80.7	84.0	86.6
San Francisco- Oakland SMSA ^c	50.9	52.7	52.0	57.5	70.1	70.1	77.3	78.0	85.2	82.0	79.1	92.2	83.1	85.0
San Francisco City/County	48.2	44.6	59.8	72.7	73.9	75.7	93.3	74.7	91.4	87.2	72.7	93.1	68.3	101.8

^a Rates are per 100,000 males aged 55+ and are age-adjusted to the 2000 US Std Population (19 age groups - Census P25-1130).^b The SEER 9 areas are San Francisco-Oakland SMSA, Connecticut, Detroit, Hawaii, Iowa, New Mexico, Seattle, Utah and Atlanta.^c The San Francisco-Oakland SMSA represents 15% of all persons in the SEER areas. For this age group, all SEER areas may not be generalizable to the United States for Non-Hodgkin Lymphoma.

- Statistic not shown. Rate based on less than 4 cases for the time interval.

Table XIX-13
NON-HODGKIN LYMPHOMA

Risk of Being Diagnosed With Cancer in 10, 20 and 30 Years, Lifetime Risk of Being Diagnosed with Cancer, and
Lifetime Risk of Dying from Cancer Given Cancer Free At Current Age
Both Sexes, 2003-2005 By Race/Ethnicity

Race/ Ethnicity	Current Age	Risk of Being Diagnosed with Cancer			Risk of Dying from Cancer	
		+10 yrs Percent (95% C.I.)	+20 yrs Percent (95% C.I.)	+30 yrs Percent (95% C.I.)	Eventually Percent (95% C.I.)	Eventually Percent (95% C.I.)
All Races	0	0.01 (0.01, 0.01)	0.02 (0.02, 0.02)	0.05 (0.05, 0.05)	2.05 (2.03, 2.07)	0.82 (0.81, 0.83)
	10	0.02 (0.01, 0.02)	0.04 (0.04, 0.05)	0.10 (0.10, 0.11)	2.07 (2.05, 2.09)	0.83 (0.82, 0.84)
	20	0.03 (0.03, 0.03)	0.09 (0.09, 0.09)	0.21 (0.21, 0.22)	2.06 (2.04, 2.08)	0.83 (0.83, 0.84)
	30	0.06 (0.06, 0.06)	0.18 (0.18, 0.19)	0.44 (0.43, 0.44)	2.05 (2.03, 2.08)	0.84 (0.83, 0.84)
	40	0.13 (0.12, 0.13)	0.38 (0.37, 0.39)	0.85 (0.84, 0.86)	2.02 (2.00, 2.04)	0.84 (0.83, 0.84)
	50	0.26 (0.26, 0.27)	0.74 (0.73, 0.75)	1.38 (1.36, 1.40)	1.95 (1.93, 1.97)	0.84 (0.83, 0.85)
	60	0.51 (0.50, 0.52)	1.19 (1.18, 1.21)	1.69 (1.67, 1.71)	1.80 (1.78, 1.82)	0.83 (0.82, 0.84)
	70	0.79 (0.77, 0.80)	1.36 (1.34, 1.38)	- (- , -)	1.49 (1.47, 1.51)	0.78 (0.77, 0.79)
80	0.81 (0.80, 0.83)	- (- , -)	- (- , -)	1.00 (0.97, 1.02)	0.63 (0.62, 0.63)	
White	0	0.01 (0.01, 0.01)	0.02 (0.02, 0.02)	0.05 (0.05, 0.05)	2.15 (2.13, 2.18)	0.87 (0.86, 0.88)
	10	0.01 (0.01, 0.02)	0.04 (0.04, 0.05)	0.10 (0.10, 0.10)	2.17 (2.15, 2.19)	0.88 (0.87, 0.89)
	20	0.03 (0.03, 0.03)	0.09 (0.08, 0.09)	0.21 (0.21, 0.22)	2.16 (2.14, 2.19)	0.88 (0.87, 0.89)
	30	0.06 (0.06, 0.06)	0.19 (0.18, 0.19)	0.44 (0.44, 0.45)	2.16 (2.13, 2.18)	0.88 (0.88, 0.89)
	40	0.13 (0.13, 0.13)	0.39 (0.38, 0.40)	0.89 (0.87, 0.90)	2.12 (2.10, 2.15)	0.89 (0.88, 0.89)
	50	0.27 (0.26, 0.28)	0.78 (0.77, 0.79)	1.46 (1.44, 1.48)	2.05 (2.03, 2.07)	0.89 (0.88, 0.90)
	60	0.54 (0.53, 0.55)	1.26 (1.24, 1.28)	1.78 (1.76, 1.80)	1.89 (1.87, 1.92)	0.88 (0.87, 0.89)
	70	0.83 (0.81, 0.85)	1.43 (1.41, 1.45)	- (- , -)	1.56 (1.53, 1.58)	0.82 (0.81, 0.83)
80	0.85 (0.83, 0.87)	- (- , -)	- (- , -)	1.03 (1.01, 1.06)	0.66 (0.65, 0.66)	
Black	0	0.01 (0.00, 0.01)	0.02 (0.02, 0.03)	0.06 (0.05, 0.06)	1.22 (1.18, 1.27)	0.44 (0.43, 0.45)
	10	0.02 (0.01, 0.02)	0.05 (0.05, 0.06)	0.13 (0.12, 0.14)	1.25 (1.20, 1.30)	0.45 (0.44, 0.47)
	20	0.04 (0.03, 0.04)	0.11 (0.10, 0.12)	0.25 (0.24, 0.27)	1.24 (1.19, 1.29)	0.45 (0.44, 0.47)
	30	0.08 (0.07, 0.09)	0.22 (0.20, 0.23)	0.45 (0.43, 0.47)	1.22 (1.17, 1.27)	0.45 (0.44, 0.47)
	40	0.14 (0.13, 0.15)	0.38 (0.36, 0.40)	0.68 (0.65, 0.71)	1.17 (1.12, 1.22)	0.45 (0.43, 0.46)
	50	0.25 (0.23, 0.27)	0.57 (0.54, 0.60)	0.88 (0.84, 0.93)	1.09 (1.04, 1.14)	0.44 (0.42, 0.46)
	60	0.36 (0.33, 0.38)	0.71 (0.67, 0.76)	0.89 (0.85, 0.95)	0.94 (0.89, 1.00)	0.42 (0.41, 0.44)
	70	0.45 (0.41, 0.49)	0.68 (0.63, 0.73)	- (- , -)	0.74 (0.68, 0.79)	0.38 (0.36, 0.40)
80	0.37 (0.33, 0.42)	- (- , -)	- (- , -)	0.46 (0.41, 0.52)	0.29 (0.27, 0.31)	

Devcan Version 7.0.0, April 2008, National Cancer Institute (<http://srab.cancer.gov/devcan/>).

Source: Incidence data are from the SEER 17 areas (San Francisco, Connecticut, Detroit, Hawaii, Iowa, New Mexico, Seattle, Utah, Atlanta, San Jose-Monterey, Los Angeles, Alaska Native Registry, Rural Georgia, California excluding SF/SJM/LA, Kentucky, Louisiana and New Jersey). Mortality data are from the NCHS public use data file for the total US.

- Statistic could not be calculated.

A percent or confidence interval value of 0.00 represents a value that is below 0.005.

Table XIX-13 - continued

NON-HODGKIN LYMPHOMA

Risk of Being Diagnosed With Cancer in 10, 20 and 30 Years, Lifetime Risk of Being Diagnosed with Cancer, and
Lifetime Risk of Dying from Cancer Given Cancer Free At Current Age
Both Sexes, 2003-2005 By Race/Ethnicity

Race/ Ethnicity	Current Age	Risk of Being Diagnosed with Cancer				Risk of Dying from Cancer	
		+10 yrs Percent (95% C.I.)	+20 yrs Percent (95% C.I.)	+30 yrs Percent (95% C.I.)	Eventually Percent (95% C.I.)	Eventually Percent (95% C.I.)	
Asian/ Pacific Islander	0	0.01 (0.00, 0.01)	0.02 (0.02, 0.03)	0.04 (0.04, 0.05)	1.74 (1.65, 1.83)	0.77 (0.71, 0.84)	
	10	0.01 (0.01, 0.02)	0.04 (0.03, 0.05)	0.08 (0.07, 0.09)	1.74 (1.66, 1.84)	0.78 (0.72, 0.85)	
	20	0.02 (0.02, 0.03)	0.06 (0.05, 0.07)	0.14 (0.13, 0.15)	1.73 (1.65, 1.83)	0.78 (0.72, 0.85)	
	30	0.04 (0.03, 0.04)	0.11 (0.10, 0.13)	0.28 (0.26, 0.30)	1.72 (1.63, 1.82)	0.78 (0.72, 0.85)	
	40	0.08 (0.07, 0.08)	0.25 (0.23, 0.26)	0.56 (0.53, 0.60)	1.69 (1.60, 1.79)	0.78 (0.72, 0.85)	
	50	0.17 (0.16, 0.19)	0.49 (0.46, 0.53)	0.99 (0.94, 1.04)	1.64 (1.55, 1.74)	0.78 (0.71, 0.85)	
	60	0.33 (0.31, 0.36)	0.85 (0.80, 0.90)	1.31 (1.24, 1.38)	1.52 (1.43, 1.62)	0.76 (0.70, 0.84)	
	70	0.56 (0.52, 0.60)	1.06 (1.00, 1.13)	- (- , -)	1.29 (1.19, 1.39)	0.72 (0.65, 0.80)	
	80	0.63 (0.57, 0.69)	- (- , -)	- (- , -)	0.90 (0.80, 1.02)	0.58 (0.50, 0.67)	
American Indian/ Alaska Native ^a	0	0.00 (0.00, 0.02)	0.01 (0.00, 0.03)	0.02 (0.01, 0.04)	1.11 (0.89, 1.48)	0.57 (0.46, 0.72)	
	10	0.01 (0.00, 0.02)	0.02 (0.01, 0.04)	0.06 (0.04, 0.10)	1.13 (0.90, 1.50)	0.58 (0.47, 0.73)	
	20	0.01 (0.00, 0.03)	0.06 (0.03, 0.09)	0.11 (0.08, 0.16)	1.13 (0.91, 1.51)	0.58 (0.47, 0.74)	
	30	0.04 (0.02, 0.07)	0.10 (0.07, 0.15)	0.23 (0.18, 0.31)	1.14 (0.91, 1.52)	0.59 (0.48, 0.75)	
	40	0.06 (0.04, 0.09)	0.19 (0.14, 0.26)	0.49 (0.38, 0.62)	1.12 (0.89, 1.52)	0.60 (0.48, 0.76)	
	50	0.14 (0.10, 0.20)	0.45 (0.34, 0.58)	0.72 (0.57, 0.91)	1.11 (0.87, 1.52)	0.61 (0.49, 0.78)	
	60	0.34 (0.24, 0.46)	0.63 (0.47, 0.82)	0.99 (0.76, 1.28)	1.04 (0.80, 1.48)	0.59 (0.46, 0.78)	
	70	0.34 (0.23, 0.50)	0.77 (0.54, 1.08)	- (- , -)	0.83 (0.58, 1.32)	0.55 (0.40, 0.76)	
	80	0.60 (0.35, 0.96)	- (- , -)	- (- , -)	0.68 (0.40, 1.33)	0.46 (0.28, 0.75)	
Hispanic ^b	0	0.01 (0.00, 0.01)	0.02 (0.01, 0.02)	0.04 (0.04, 0.04)	2.01 (1.93, 2.10)	0.73 (0.70, 0.76)	
	10	0.01 (0.01, 0.01)	0.03 (0.03, 0.04)	0.08 (0.08, 0.09)	2.02 (1.94, 2.11)	0.74 (0.70, 0.77)	
	20	0.02 (0.02, 0.03)	0.07 (0.07, 0.08)	0.18 (0.17, 0.19)	2.02 (1.94, 2.11)	0.74 (0.71, 0.77)	
	30	0.05 (0.05, 0.05)	0.16 (0.15, 0.17)	0.38 (0.36, 0.40)	2.02 (1.93, 2.11)	0.74 (0.71, 0.78)	
	40	0.11 (0.10, 0.12)	0.33 (0.32, 0.35)	0.72 (0.69, 0.75)	1.99 (1.90, 2.08)	0.74 (0.71, 0.78)	
	50	0.23 (0.21, 0.24)	0.62 (0.59, 0.65)	1.25 (1.20, 1.30)	1.92 (1.83, 2.01)	0.73 (0.70, 0.77)	
	60	0.41 (0.39, 0.44)	1.08 (1.03, 1.13)	1.60 (1.53, 1.67)	1.78 (1.69, 1.88)	0.72 (0.68, 0.76)	
	70	0.74 (0.70, 0.78)	1.32 (1.25, 1.40)	- (- , -)	1.53 (1.44, 1.63)	0.67 (0.63, 0.71)	
	80	0.77 (0.70, 0.84)	- (- , -)	- (- , -)	1.04 (0.94, 1.15)	0.52 (0.48, 0.57)	

Devcan Version 7.0.0, April 2008, National Cancer Institute (<http://srab.cancer.gov/devcan/>).

Source: Incidence data are from the SEER 17 areas (San Francisco, Connecticut, Detroit, Hawaii, Iowa, New Mexico, Seattle, Utah, Atlanta, San Jose-Monterey, Los Angeles, Alaska Native Registry, Rural Georgia, California excluding SF/SJM/LA, Kentucky, Louisiana and New Jersey). Mortality data are from the NCHS public use data file for the total US.

^a Underlying incidence and mortality data for American Indian/Alaska Native are based on the CHSDA (Contract Health Service Delivery Area) counties.

^b Hispanic is not mutually exclusive from whites, blacks, Asian/Pacific Islanders, and American Indians/Alaska Natives. Underlying incidence data for Hispanics are based on NHIA and exclude cases from the Alaska Native Registry and Kentucky. Underlying mortality data for Hispanics exclude deaths from Minnesota, New Hampshire and North Dakota.

- Statistic could not be calculated.

A percent or confidence interval value of 0.00 represents a value that is below 0.005.

Table XIX-13 - continued

NON-HODGKIN LYMPHOMA

Risk of Being Diagnosed With Cancer in 10, 20 and 30 Years, Lifetime Risk of Being Diagnosed with Cancer, and
Lifetime Risk of Dying from Cancer Given Cancer Free At Current Age
Males, 2003-2005 By Race/Ethnicity

Race/ Ethnicity	Current Age	Risk of Being Diagnosed with Cancer			Risk of Dying from Cancer	
		+10 yrs Percent (95% C.I.)	+20 yrs Percent (95% C.I.)	+30 yrs Percent (95% C.I.)	Eventually Percent (95% C.I.)	Eventually Percent (95% C.I.)
All Races	0	0.01 (0.01, 0.01)	0.03 (0.03, 0.03)	0.06 (0.06, 0.06)	2.23 (2.20, 2.26)	0.90 (0.89, 0.91)
	10	0.02 (0.02, 0.02)	0.05 (0.05, 0.06)	0.12 (0.12, 0.13)	2.25 (2.22, 2.28)	0.91 (0.90, 0.92)
	20	0.03 (0.03, 0.04)	0.11 (0.10, 0.11)	0.25 (0.25, 0.26)	2.24 (2.21, 2.27)	0.92 (0.91, 0.93)
	30	0.07 (0.07, 0.08)	0.22 (0.22, 0.23)	0.51 (0.50, 0.52)	2.24 (2.21, 2.27)	0.92 (0.91, 0.93)
	40	0.15 (0.15, 0.16)	0.45 (0.44, 0.46)	0.96 (0.95, 0.98)	2.20 (2.17, 2.24)	0.93 (0.92, 0.94)
	50	0.30 (0.29, 0.31)	0.84 (0.82, 0.86)	1.54 (1.51, 1.56)	2.13 (2.09, 2.16)	0.93 (0.92, 0.94)
	60	0.58 (0.57, 0.60)	1.34 (1.31, 1.36)	1.86 (1.83, 1.90)	1.98 (1.94, 2.01)	0.93 (0.92, 0.94)
	70	0.90 (0.88, 0.92)	1.53 (1.50, 1.56)	- (- , -)	1.66 (1.63, 1.70)	0.88 (0.86, 0.89)
80	0.96 (0.93, 0.99)	- (- , -)	- (- , -)	1.16 (1.13, 1.20)	0.73 (0.71, 0.74)	
White	0	0.01 (0.01, 0.01)	0.03 (0.02, 0.03)	0.06 (0.06, 0.06)	2.33 (2.30, 2.37)	0.96 (0.95, 0.97)
	10	0.02 (0.02, 0.02)	0.05 (0.05, 0.06)	0.12 (0.12, 0.13)	2.35 (2.32, 2.39)	0.97 (0.96, 0.98)
	20	0.03 (0.03, 0.04)	0.10 (0.10, 0.11)	0.26 (0.25, 0.26)	2.35 (2.31, 2.38)	0.97 (0.96, 0.98)
	30	0.07 (0.07, 0.08)	0.23 (0.22, 0.23)	0.52 (0.51, 0.53)	2.34 (2.31, 2.38)	0.98 (0.97, 0.99)
	40	0.16 (0.15, 0.16)	0.46 (0.44, 0.47)	1.01 (0.99, 1.03)	2.31 (2.27, 2.35)	0.98 (0.97, 1.00)
	50	0.31 (0.30, 0.32)	0.88 (0.86, 0.90)	1.62 (1.59, 1.65)	2.23 (2.19, 2.27)	0.99 (0.98, 1.00)
	60	0.62 (0.60, 0.63)	1.41 (1.38, 1.44)	1.96 (1.93, 2.00)	2.07 (2.03, 2.11)	0.98 (0.97, 1.00)
	70	0.95 (0.92, 0.97)	1.60 (1.56, 1.63)	- (- , -)	1.73 (1.69, 1.77)	0.92 (0.91, 0.94)
80	1.00 (0.97, 1.04)	- (- , -)	- (- , -)	1.20 (1.16, 1.24)	0.76 (0.75, 0.78)	
Black	0	0.01 (0.00, 0.01)	0.03 (0.02, 0.04)	0.07 (0.06, 0.09)	1.32 (1.26, 1.40)	0.46 (0.44, 0.48)
	10	0.02 (0.02, 0.03)	0.07 (0.06, 0.08)	0.16 (0.15, 0.18)	1.35 (1.28, 1.43)	0.47 (0.45, 0.49)
	20	0.05 (0.04, 0.06)	0.14 (0.13, 0.16)	0.31 (0.29, 0.33)	1.34 (1.27, 1.42)	0.47 (0.45, 0.49)
	30	0.10 (0.09, 0.11)	0.27 (0.25, 0.29)	0.56 (0.53, 0.60)	1.33 (1.26, 1.41)	0.47 (0.45, 0.49)
	40	0.18 (0.16, 0.19)	0.48 (0.45, 0.51)	0.80 (0.75, 0.85)	1.27 (1.20, 1.35)	0.47 (0.45, 0.49)
	50	0.32 (0.29, 0.35)	0.66 (0.61, 0.71)	1.00 (0.93, 1.06)	1.17 (1.10, 1.25)	0.46 (0.44, 0.48)
	60	0.39 (0.35, 0.44)	0.78 (0.72, 0.85)	0.96 (0.88, 1.04)	0.99 (0.91, 1.08)	0.44 (0.41, 0.46)
	70	0.52 (0.46, 0.59)	0.76 (0.68, 0.84)	- (- , -)	0.79 (0.71, 0.89)	0.38 (0.36, 0.42)
80	0.43 (0.35, 0.52)	- (- , -)	- (- , -)	0.50 (0.41, 0.61)	0.30 (0.26, 0.34)	

Devcan Version 7.0.0, April 2008, National Cancer Institute (<http://srab.cancer.gov/devcan/>).

Source: Incidence data are from the SEER 17 areas (San Francisco, Connecticut, Detroit, Hawaii, Iowa, New Mexico, Seattle, Utah, Atlanta, San Jose-Monterey, Los Angeles, Alaska Native Registry, Rural Georgia, California excluding SF/SJM/LA, Kentucky, Louisiana and New Jersey). Mortality data are from the NCHS public use data file for the total US.

- Statistic could not be calculated.

A percent or confidence interval value of 0.00 represents a value that is below 0.005.

Table XIX-13 - continued

NON-HODGKIN LYMPHOMA

Risk of Being Diagnosed With Cancer in 10, 20 and 30 Years, Lifetime Risk of Being Diagnosed with Cancer, and
Lifetime Risk of Dying from Cancer Given Cancer Free At Current Age
Males, 2003-2005 By Race/Ethnicity

Race/ Ethnicity	Current Age	Risk of Being Diagnosed with Cancer				Risk of Dying from Cancer	
		+10 yrs Percent (95% C.I.)	+20 yrs Percent (95% C.I.)	+30 yrs Percent (95% C.I.)	Eventually Percent (95% C.I.)	Eventually Percent (95% C.I.)	
Asian/ Pacific Islander	0	0.01 (0.00, 0.01)	0.02 (0.02, 0.03)	0.06 (0.04, 0.07)	1.98 (1.84, 2.13)	0.85 (0.76, 0.96)	
	10	0.02 (0.01, 0.02)	0.05 (0.04, 0.06)	0.09 (0.08, 0.10)	1.99 (1.85, 2.15)	0.86 (0.77, 0.97)	
	20	0.03 (0.02, 0.04)	0.07 (0.06, 0.09)	0.16 (0.14, 0.18)	1.98 (1.84, 2.14)	0.86 (0.77, 0.97)	
	30	0.04 (0.03, 0.05)	0.13 (0.11, 0.15)	0.31 (0.28, 0.34)	1.96 (1.83, 2.12)	0.86 (0.77, 0.97)	
	40	0.09 (0.08, 0.10)	0.27 (0.25, 0.30)	0.64 (0.59, 0.69)	1.94 (1.80, 2.09)	0.86 (0.76, 0.97)	
	50	0.19 (0.17, 0.21)	0.56 (0.51, 0.61)	1.14 (1.06, 1.22)	1.88 (1.74, 2.04)	0.85 (0.76, 0.97)	
	60	0.39 (0.35, 0.43)	0.99 (0.92, 1.07)	1.54 (1.43, 1.66)	1.77 (1.63, 1.94)	0.84 (0.74, 0.96)	
	70	0.67 (0.60, 0.74)	1.28 (1.17, 1.40)	- (- , -)	1.54 (1.39, 1.71)	0.79 (0.69, 0.92)	
	80	0.80 (0.70, 0.91)	- (- , -)	- (- , -)	1.13 (0.97, 1.33)	0.65 (0.53, 0.81)	
American Indian/ Alaska Native ^a	0	0.00 (0.00, 0.05)	0.00 (0.00, 0.05)	0.02 (0.00, 0.06)	1.14 (0.82, 1.87)	0.54 (0.39, 0.79)	
	10	0.00 (0.00, 0.02)	0.02 (0.00, 0.05)	0.08 (0.04, 0.15)	1.17 (0.83, 1.91)	0.55 (0.40, 0.81)	
	20	0.01 (0.00, 0.04)	0.08 (0.04, 0.15)	0.15 (0.09, 0.23)	1.18 (0.84, 1.93)	0.55 (0.40, 0.82)	
	30	0.07 (0.04, 0.13)	0.13 (0.08, 0.21)	0.26 (0.18, 0.38)	1.19 (0.85, 1.96)	0.56 (0.41, 0.84)	
	40	0.07 (0.03, 0.12)	0.20 (0.13, 0.30)	0.49 (0.34, 0.69)	1.16 (0.81, 1.96)	0.58 (0.42, 0.86)	
	50	0.14 (0.08, 0.24)	0.45 (0.30, 0.65)	0.69 (0.48, 0.98)	1.15 (0.79, 2.00)	0.60 (0.43, 0.90)	
	60	0.34 (0.20, 0.53)	0.61 (0.39, 0.90)	1.02 (0.67, 1.50)	1.11 (0.73, 2.04)	0.59 (0.40, 0.93)	
	70	0.32 (0.17, 0.58)	0.82 (0.47, 1.35)	- (- , -)	0.93 (0.52, 2.03)	0.50 (0.29, 0.91)	
	80	0.73 (0.33, 1.45)	- (- , -)	- (- , -)	0.90 (0.40, 2.52)	0.39 (0.14, 1.01)	
Hispanic ^b	0	0.01 (0.01, 0.01)	0.02 (0.02, 0.03)	0.05 (0.04, 0.05)	2.08 (1.96, 2.22)	0.76 (0.72, 0.82)	
	10	0.01 (0.01, 0.02)	0.04 (0.03, 0.04)	0.10 (0.09, 0.11)	2.10 (1.97, 2.24)	0.77 (0.73, 0.83)	
	20	0.03 (0.02, 0.03)	0.08 (0.08, 0.09)	0.21 (0.20, 0.23)	2.09 (1.97, 2.24)	0.78 (0.73, 0.83)	
	30	0.06 (0.05, 0.07)	0.19 (0.18, 0.21)	0.43 (0.41, 0.46)	2.09 (1.97, 2.24)	0.78 (0.73, 0.84)	
	40	0.13 (0.12, 0.15)	0.38 (0.35, 0.40)	0.79 (0.74, 0.83)	2.06 (1.93, 2.21)	0.78 (0.73, 0.84)	
	50	0.25 (0.23, 0.27)	0.67 (0.63, 0.72)	1.31 (1.24, 1.39)	1.99 (1.86, 2.14)	0.78 (0.72, 0.83)	
	60	0.45 (0.41, 0.49)	1.13 (1.06, 1.21)	1.67 (1.56, 1.78)	1.85 (1.72, 2.02)	0.76 (0.71, 0.82)	
	70	0.79 (0.72, 0.86)	1.41 (1.30, 1.52)	- (- , -)	1.62 (1.47, 1.80)	0.71 (0.65, 0.78)	
	80	0.86 (0.76, 0.98)	- (- , -)	- (- , -)	1.16 (0.99, 1.38)	0.54 (0.48, 0.63)	

Devcan Version 7.0.0, April 2008, National Cancer Institute (<http://srab.cancer.gov/devcan/>).

Source: Incidence data are from the SEER 17 areas (San Francisco, Connecticut, Detroit, Hawaii, Iowa, New Mexico, Seattle, Utah, Atlanta, San Jose-Monterey, Los Angeles, Alaska Native Registry, Rural Georgia, California excluding SF/SJM/LA, Kentucky, Louisiana and New Jersey). Mortality data are from the NCHS public use data file for the total US.

^a Underlying incidence and mortality data for American Indian/Alaska Native are based on the CHSDA (Contract Health Service Delivery Area) counties.

^b Hispanic is not mutually exclusive from whites, blacks, Asian/Pacific Islanders, and American Indians/Alaska Natives. Underlying incidence data for Hispanics are based on NHIA and exclude cases from the Alaska Native Registry and Kentucky. Underlying mortality data for Hispanics exclude deaths from Minnesota, New Hampshire and North Dakota.

- Statistic could not be calculated.

A percent or confidence interval value of 0.00 represents a value that is below 0.005.

Table XIX-13 - continued

NON-HODGKIN LYMPHOMA

Risk of Being Diagnosed With Cancer in 10, 20 and 30 Years, Lifetime Risk of Being Diagnosed with Cancer, and
Lifetime Risk of Dying from Cancer Given Cancer Free At Current Age
Females, 2003-2005 By Race/Ethnicity

Race/ Ethnicity	Current Age	Risk of Being Diagnosed with Cancer						Risk of Dying from Cancer	
		+10 yrs Percent (95% C.I.)	+20 yrs Percent (95% C.I.)	+30 yrs Percent (95% C.I.)	Eventually Percent (95% C.I.)	Eventually Percent (95% C.I.)			
All Races	0	0.00 (0.00, 0.01)	0.01 (0.01, 0.02)	0.04 (0.03, 0.04)	1.90 (1.87, 1.92)	0.75 (0.74, 0.76)			
	10	0.01 (0.01, 0.01)	0.03 (0.03, 0.04)	0.08 (0.08, 0.08)	1.91 (1.89, 1.94)	0.76 (0.75, 0.77)			
	20	0.02 (0.02, 0.03)	0.07 (0.07, 0.07)	0.17 (0.16, 0.17)	1.91 (1.88, 1.94)	0.76 (0.75, 0.77)			
	30	0.05 (0.04, 0.05)	0.15 (0.14, 0.15)	0.36 (0.35, 0.37)	1.89 (1.87, 1.92)	0.76 (0.75, 0.77)			
	40	0.10 (0.10, 0.10)	0.32 (0.31, 0.33)	0.74 (0.72, 0.75)	1.86 (1.84, 1.89)	0.76 (0.75, 0.77)			
	50	0.22 (0.22, 0.23)	0.65 (0.64, 0.66)	1.24 (1.22, 1.26)	1.80 (1.78, 1.83)	0.76 (0.76, 0.77)			
	60	0.45 (0.44, 0.46)	1.07 (1.05, 1.09)	1.54 (1.52, 1.57)	1.66 (1.63, 1.69)	0.75 (0.74, 0.76)			
	70	0.70 (0.68, 0.71)	1.23 (1.21, 1.26)	- (- , -)	1.36 (1.33, 1.39)	0.71 (0.70, 0.72)			
80	0.72 (0.70, 0.74)	- (- , -)	- (- , -)	0.89 (0.87, 0.92)	0.57 (0.56, 0.58)				
White	0	0.00 (0.00, 0.01)	0.01 (0.01, 0.02)	0.04 (0.03, 0.04)	1.99 (1.96, 2.03)	0.79 (0.78, 0.80)			
	10	0.01 (0.01, 0.01)	0.03 (0.03, 0.04)	0.08 (0.07, 0.08)	2.01 (1.98, 2.04)	0.80 (0.79, 0.81)			
	20	0.02 (0.02, 0.03)	0.07 (0.06, 0.07)	0.17 (0.16, 0.17)	2.01 (1.97, 2.04)	0.80 (0.79, 0.81)			
	30	0.05 (0.04, 0.05)	0.14 (0.14, 0.15)	0.37 (0.36, 0.38)	1.99 (1.96, 2.02)	0.80 (0.79, 0.81)			
	40	0.10 (0.10, 0.10)	0.32 (0.32, 0.33)	0.77 (0.75, 0.79)	1.96 (1.93, 1.99)	0.80 (0.80, 0.81)			
	50	0.23 (0.22, 0.24)	0.68 (0.67, 0.70)	1.31 (1.29, 1.34)	1.90 (1.87, 1.93)	0.81 (0.80, 0.82)			
	60	0.48 (0.46, 0.49)	1.13 (1.11, 1.16)	1.63 (1.60, 1.66)	1.75 (1.72, 1.78)	0.79 (0.78, 0.80)			
	70	0.74 (0.72, 0.76)	1.30 (1.27, 1.33)	- (- , -)	1.43 (1.40, 1.46)	0.74 (0.73, 0.75)			
80	0.75 (0.73, 0.78)	- (- , -)	- (- , -)	0.93 (0.90, 0.96)	0.59 (0.58, 0.60)				
Black	0	0.01 (0.00, 0.01)	0.02 (0.01, 0.02)	0.04 (0.03, 0.05)	1.13 (1.07, 1.20)	0.43 (0.41, 0.45)			
	10	0.01 (0.01, 0.02)	0.03 (0.03, 0.04)	0.10 (0.08, 0.11)	1.15 (1.08, 1.22)	0.43 (0.41, 0.46)			
	20	0.02 (0.02, 0.03)	0.09 (0.07, 0.10)	0.19 (0.18, 0.21)	1.14 (1.08, 1.21)	0.43 (0.41, 0.46)			
	30	0.06 (0.05, 0.07)	0.17 (0.16, 0.19)	0.35 (0.32, 0.38)	1.13 (1.06, 1.20)	0.43 (0.41, 0.45)			
	40	0.11 (0.10, 0.12)	0.29 (0.27, 0.32)	0.57 (0.53, 0.62)	1.08 (1.02, 1.15)	0.43 (0.41, 0.45)			
	50	0.19 (0.17, 0.21)	0.48 (0.45, 0.52)	0.79 (0.73, 0.84)	1.01 (0.95, 1.09)	0.43 (0.40, 0.45)			
	60	0.32 (0.29, 0.36)	0.65 (0.60, 0.71)	0.84 (0.78, 0.91)	0.90 (0.83, 0.98)	0.41 (0.39, 0.44)			
	70	0.40 (0.35, 0.44)	0.62 (0.56, 0.69)	- (- , -)	0.69 (0.63, 0.77)	0.37 (0.35, 0.40)			
80	0.33 (0.28, 0.39)	- (- , -)	- (- , -)	0.44 (0.38, 0.52)	0.29 (0.26, 0.31)				

Devcan Version 7.0.0, April 2008, National Cancer Institute (<http://srab.cancer.gov/devcan/>).

Source: Incidence data are from the SEER 17 areas (San Francisco, Connecticut, Detroit, Hawaii, Iowa, New Mexico, Seattle, Utah, Atlanta, San Jose-Monterey, Los Angeles, Alaska Native Registry, Rural Georgia, California excluding SF/SJM/LA, Kentucky, Louisiana and New Jersey). Mortality data are from the NCHS public use data file for the total US.

- Statistic could not be calculated.

A percent or confidence interval value of 0.00 represents a value that is below 0.005.

Table XIX-13 - continued

NON-HODGKIN LYMPHOMA

Risk of Being Diagnosed With Cancer in 10, 20 and 30 Years, Lifetime Risk of Being Diagnosed with Cancer, and
Lifetime Risk of Dying from Cancer Given Cancer Free At Current Age
Females, 2003-2005 By Race/Ethnicity

Race/ Ethnicity	Current Age	Risk of Being Diagnosed with Cancer				Risk of Dying from Cancer	
		+10 yrs Percent (95% C.I.)	+20 yrs Percent (95% C.I.)	+30 yrs Percent (95% C.I.)	Eventually Percent (95% C.I.)	Eventually Percent (95% C.I.)	
Asian/ Pacific Islander	0	0.00 (0.00, 0.01)	0.02 (0.01, 0.02)	0.03 (0.03, 0.04)	1.52 (1.40, 1.65)	0.71 (0.63, 0.81)	
	10	0.01 (0.01, 0.02)	0.03 (0.02, 0.04)	0.06 (0.05, 0.08)	1.52 (1.41, 1.66)	0.71 (0.63, 0.81)	
	20	0.02 (0.01, 0.02)	0.05 (0.04, 0.06)	0.12 (0.10, 0.13)	1.51 (1.40, 1.65)	0.71 (0.63, 0.81)	
	30	0.03 (0.03, 0.04)	0.10 (0.09, 0.11)	0.26 (0.23, 0.28)	1.50 (1.39, 1.64)	0.71 (0.63, 0.81)	
	40	0.07 (0.06, 0.08)	0.22 (0.20, 0.25)	0.50 (0.46, 0.54)	1.47 (1.36, 1.61)	0.71 (0.63, 0.81)	
	50	0.16 (0.14, 0.18)	0.44 (0.40, 0.48)	0.87 (0.81, 0.93)	1.42 (1.31, 1.56)	0.71 (0.63, 0.81)	
	60	0.29 (0.26, 0.32)	0.73 (0.67, 0.79)	1.12 (1.04, 1.21)	1.30 (1.19, 1.44)	0.70 (0.61, 0.80)	
	70	0.47 (0.42, 0.52)	0.89 (0.81, 0.98)	- (- , -)	1.08 (0.97, 1.22)	0.66 (0.57, 0.77)	
	80	0.50 (0.43, 0.57)	- (- , -)	- (- , -)	0.72 (0.61, 0.87)	0.52 (0.43, 0.65)	
American Indian/ Alaska Native ^a	0	0.00 (0.00, 0.05)	0.01 (0.00, 0.06)	0.02 (0.00, 0.07)	1.09 (0.80, 1.69)	0.59 (0.44, 0.82)	
	10	0.01 (0.00, 0.03)	0.02 (0.00, 0.05)	0.04 (0.01, 0.08)	1.11 (0.82, 1.71)	0.60 (0.45, 0.84)	
	20	0.01 (0.00, 0.03)	0.03 (0.01, 0.07)	0.08 (0.04, 0.14)	1.10 (0.81, 1.71)	0.61 (0.45, 0.84)	
	30	0.02 (0.00, 0.05)	0.07 (0.04, 0.13)	0.21 (0.13, 0.31)	1.11 (0.81, 1.72)	0.61 (0.45, 0.85)	
	40	0.05 (0.03, 0.10)	0.19 (0.12, 0.29)	0.50 (0.35, 0.69)	1.11 (0.81, 1.73)	0.61 (0.45, 0.86)	
	50	0.14 (0.08, 0.23)	0.46 (0.31, 0.65)	0.75 (0.54, 1.03)	1.09 (0.78, 1.73)	0.61 (0.45, 0.86)	
	60	0.33 (0.21, 0.51)	0.65 (0.44, 0.93)	0.99 (0.68, 1.39)	1.00 (0.69, 1.68)	0.59 (0.42, 0.86)	
	70	0.36 (0.20, 0.60)	0.75 (0.46, 1.17)	- (- , -)	0.77 (0.47, 1.52)	0.58 (0.38, 0.88)	
	80	0.52 (0.24, 0.99)	- (- , -)	- (- , -)	0.55 (0.25, 1.51)	0.50 (0.27, 0.91)	
Hispanic ^b	0	0.00 (0.00, 0.01)	0.01 (0.01, 0.02)	0.03 (0.03, 0.04)	1.95 (1.84, 2.08)	0.70 (0.66, 0.75)	
	10	0.01 (0.01, 0.01)	0.03 (0.02, 0.03)	0.07 (0.06, 0.08)	1.97 (1.86, 2.09)	0.71 (0.66, 0.76)	
	20	0.02 (0.02, 0.02)	0.06 (0.05, 0.07)	0.15 (0.14, 0.16)	1.97 (1.86, 2.09)	0.71 (0.66, 0.76)	
	30	0.04 (0.03, 0.05)	0.13 (0.12, 0.14)	0.32 (0.30, 0.35)	1.95 (1.84, 2.08)	0.71 (0.66, 0.76)	
	40	0.09 (0.08, 0.10)	0.29 (0.26, 0.31)	0.65 (0.61, 0.69)	1.93 (1.81, 2.05)	0.71 (0.66, 0.76)	
	50	0.20 (0.18, 0.22)	0.57 (0.53, 0.61)	1.19 (1.12, 1.26)	1.87 (1.75, 1.99)	0.70 (0.66, 0.75)	
	60	0.38 (0.35, 0.42)	1.03 (0.96, 1.10)	1.54 (1.45, 1.64)	1.73 (1.61, 1.86)	0.68 (0.64, 0.74)	
	70	0.70 (0.65, 0.76)	1.26 (1.17, 1.36)	- (- , -)	1.47 (1.35, 1.60)	0.64 (0.59, 0.69)	
	80	0.71 (0.63, 0.79)	- (- , -)	- (- , -)	0.96 (0.84, 1.11)	0.51 (0.46, 0.57)	

Devcan Version 7.0.0, April 2008, National Cancer Institute (<http://srab.cancer.gov/devcan/>).

Source: Incidence data are from the SEER 17 areas (San Francisco, Connecticut, Detroit, Hawaii, Iowa, New Mexico, Seattle, Utah, Atlanta, San Jose-Monterey, Los Angeles, Alaska Native Registry, Rural Georgia, California excluding SF/SJM/LA, Kentucky, Louisiana and New Jersey). Mortality data are from the NCHS public use data file for the total US.

^a Underlying incidence and mortality data for American Indian/Alaska Native are based on the CHSDA (Contract Health Service Delivery Area) counties.

^b Hispanic is not mutually exclusive from whites, blacks, Asian/Pacific Islanders, and American Indians/Alaska Natives. Underlying incidence data for Hispanics are based on NHIA and exclude cases from the Alaska Native Registry and Kentucky. Underlying mortality data for Hispanics exclude deaths from Minnesota, New Hampshire and North Dakota.

- Statistic could not be calculated.

A percent or confidence interval value of 0.00 represents a value that is below 0.005.

Table XIX-14
NON-HODGKIN LYMPHOMA

SEER INCIDENCE AND U.S. MORTALITY
AGE-ADJUSTED RATES AND TRENDS^a
By Race/Ethnicity and Sex

SEER Incidence	Rate 2001-2005 ^b			Seer 13 Areas ^c Trend 1996-2005 AAPC (%)			SEER 9 Areas ^d Trend 1996-2005 AAPC (%)		
	Rate per 100,000 persons			Total Males Females			Total Males Females		
	Total	Males	Females	Total	Males	Females	Total	Males	Females
RACE/ETHNICITY									
All Races	19.5	23.5	16.3	0.3*	-0.1	1.0*	0.5*	0.2	1.0*
White	20.3	24.3	17.1	0.4*	-0.1	1.0*	0.6*	0.4*	1.1*
White Hispanic ^e	17.1	19.7	14.9	-0.2	-0.6	0.5	-	-	-
White Non-Hispanic ^e	20.9	25.3	17.4	0.5*	0.1	1.1*	-	-	-
Black	14.9	18.4	12.1	0.9*	-0.3	2.5*	0.8	-0.9	2.7*
Asian/Pacific Islander	13.2	16.0	11.1	0.1	-0.1	0.5	-	-	-
Amer Ind/Alaska Nat ^f	11.0	13.3	9.3	3.3	-	-	-	-	-
Hispanic ^e	16.7	19.2	14.6	0.0	-0.5	0.7*	-	-	-
U.S. Mortality ^g									
	Rate 2001-2005			Trend 1996-2005 ^h					
	Rate per 100,000 persons			AAPC (%)					
	Total	Males	Females	Total	Males	Females			
RACE/ETHNICITY									
All Races	7.3	9.3	5.9	-2.7*	-2.5*	-3.0*			
White	7.6	9.7	6.2	-2.7*	-2.4*	-3.1*			
White Hispanic ^e	5.8	6.9	4.8	-2.9*	-3.8*	-2.3*			
White Non-Hispanic ^e	7.7	9.8	6.2	-2.5*	-2.1*	-2.9*			
Black	5.1	6.4	4.2	-2.6*	-3.2*	-2.0*			
Asian/Pacific Islander	4.6	5.6	3.8	-2.0*	-2.6*	-1.2*			
Amer Ind/Alaska Nat									
Total U.S.	4.0	4.4	3.6	-0.3	-1.2	0.1			
CHSDA Counties	5.4	5.8	4.9	1.4	0.0	2.1			
Non-CHSDA Counties	2.3	2.7	1.9	-4.2	-	-			
Hispanic ^e	5.5	6.7	4.7	-2.9*	-3.9*	-2.3*			

The AAPC is the Average Annual Percent Change over the time interval. The AAPCs are calculated by the Joinpoint Regression Program Version 3.3, April 2008, National Cancer Institute.

Statistic not shown. Rate based on less than 16 cases for the time interval. Trend based on less than 10 cases for at least one year within the time interval.

Rates are age-adjusted to the 2000 US Std Population (19 age groups - Census P25-1130). Trends are based on rates age-adjusted to the 2000 US Std Population (19 age groups - Census P25-1130).

Incidence data used in calculating the 2001-2005 rates are from the SEER 17 areas (San Francisco, Connecticut, Detroit, Hawaii, Iowa, New Mexico, Seattle, Utah, Atlanta, San Jose-Monterey, Los Angeles, Alaska Native Registry, Rural Georgia, California excluding SF/SJM/LA, Kentucky, Louisiana and New Jersey).

The SEER 13 areas are San Francisco, Connecticut, Detroit, Hawaii, Iowa, New Mexico, Seattle, Utah, Atlanta, San Jose-Monterey, Los Angeles, Alaska Native Registry and Rural Georgia. The 1996-2005 AAPC trends are based on a Joinpoint analysis using diagnosis years 1992-2005.

The SEER 9 areas are San Francisco, Connecticut, Detroit, Hawaii, Iowa, New Mexico, Seattle, Utah, and Atlanta. The 1996-2005 AAPC trends are based on a Joinpoint analysis using diagnosis years 1975-2005.

Hispanic and Non-Hispanic are not mutually exclusive from whites, blacks, Asian/Pacific Islanders, and American Indians/Alaska Natives. Incidence data for Hispanics and Non-Hispanics are based on NHIA and exclude cases from the Alaska Native Registry and Kentucky. The 2001-2005 Hispanic and Non-Hispanic death rates exclude deaths from Minnesota, New Hampshire and North Dakota. The 1996-2005 Hispanic and Non-Hispanic mortality trends exclude deaths from Connecticut, Maine, Maryland, Minnesota, New Hampshire, New York, North Dakota, Oklahoma and Vermont.

Incidence data for American Indian/Alaska Native are based on the CHSDA(Contract Health Service Delivery Area) counties.

US Mortality Files, National Center for Health Statistics, CDC.

The 1996-2005 mortality AAPCs are based on a Joinpoint analysis using years of death 1992-2005.

The APC is significantly different from zero (p<.05).

Table XIX-15
NON-HODGKIN LYMPHOMA

AGE-ADJUSTED SEER INCIDENCE RATES^a
By Registry, Race and Sex

	All Races			Whites			Blacks		
	Total	Males	Females	Total	Males	Females	Total	Males	Females
<u>SEER INCIDENCE RATES^a, 2001-2005</u>									
REGISTRY									
Atlanta & Rural Georgia	17.5	21.7	14.4	18.8	22.9	15.7	14.2	18.8	10.9
Atlanta	17.7	22.1	14.4	18.9	23.1	15.7	14.4	19.2	11.0
Rural Georgia	15.9	18.0	13.5	19.1	20.7	17.0	10.9	-	-
California	18.7	22.6	15.5	19.4	23.4	16.1	14.4	18.0	11.3
Greater Bay Area	20.3	25.1	16.4	21.9	26.9	17.6	17.1	21.4	13.1
San Francisco-Oakland	20.4	25.9	16.0	22.1	27.8	17.4	17.8	22.4	13.9
San Jose-Monterey	20.2	23.7	17.3	21.4	25.6	18.0	12.4	15.2	-
Los Angeles	18.1	22.0	15.0	19.2	23.3	15.9	14.1	18.4	10.9
Greater California	18.4	22.0	15.3	18.8	22.5	15.7	13.1	15.6	10.5
Connecticut	21.1	25.5	17.8	21.6	26.1	18.1	15.7	18.0	14.1
Detroit	21.4	25.0	18.8	22.7	26.4	19.9	16.4	19.5	14.1
Hawaii	15.6	18.9	12.7	18.7	23.2	14.3	-	-	-
Iowa	19.9	23.5	17.0	19.8	23.4	17.0	14.4	18.3	-
Kentucky	19.3	22.4	16.9	19.5	22.5	17.2	13.6	18.8	10.2
Louisiana	19.1	22.9	16.2	20.8	24.7	17.8	13.9	16.7	11.6
New Jersey	21.2	25.9	17.7	21.9	26.5	18.4	16.3	20.6	13.1
New Mexico	16.0	18.4	14.0	16.5	19.0	14.5	13.2	-	-
Seattle-Puget Sound	22.9	28.1	18.8	23.7	29.2	19.4	15.3	16.0	14.8
Utah	19.2	22.9	15.8	19.4	23.3	15.9	-	-	-
9 SEER Areas ^b	20.1	24.4	16.8	21.1	25.5	17.7	15.8	19.1	13.2
11 SEER Areas ^b	19.7	23.8	16.4	20.7	25.0	17.3	15.3	18.9	12.6
13 SEER Areas ^b	19.7	23.8	16.4	20.7	25.0	17.3	15.3	18.9	12.5
17 SEER Areas ^b	19.5	23.5	16.3	20.3	24.3	17.1	14.9	18.4	12.1

^a Rates are per 100,000 and are age-adjusted to the 2000 US Std Population (19 age groups - Census P25-1130)

^b The SEER 9 areas are San Francisco, Connecticut, Detroit, Hawaii, Iowa, New Mexico, Seattle, Utah and Atlanta.

The SEER 11 areas comprise the SEER 9 areas plus San Jose-Monterey and Los Angeles.

The SEER 13 areas comprise the SEER 11 areas plus the Alaska Native Registry and Rural Georgia.

The SEER 17 areas comprise the SEER 13 areas plus California excluding SF/SJM/LA, Kentucky, Louisiana and New Jersey.

- Statistic not shown. Rate based on less than 16 cases for the time interval.

Table XIX-16
NON-HODGKIN LYMPHOMA

AGE-ADJUSTED SEER DEATH RATES^a
By Registry, Race and Sex

	All Races			Whites			Blacks		
	Total	Males	Females	Total	Males	Females	Total	Males	Females
<u>SEER DEATH RATES^a, 2001-2005</u>									
REGISTRY									
Atlanta & Rural Georgia	6.2	7.7	5.2	6.7	8.2	5.7	4.6	5.8	3.8
Atlanta	6.2	7.8	5.2	6.7	8.3	5.7	4.6	5.8	3.7
Rural Georgia	6.4	7.4	5.3	6.7	-	-	-	-	-
California	6.9	8.8	5.4	7.3	9.3	5.7	5.3	6.2	4.5
Greater Bay Area	7.2	9.4	5.6	7.8	10.3	6.0	5.6	7.4	4.3
San Francisco-Oakland	7.3	9.8	5.4	8.0	10.9	5.8	5.8	7.6	4.5
San Jose-Monterey	7.1	8.4	6.0	7.5	9.2	6.3	-	-	-
Los Angeles	6.4	8.1	5.1	6.9	8.9	5.4	4.8	5.4	4.2
Greater California	7.0	8.9	5.5	7.2	9.2	5.7	5.8	6.4	5.1
Connecticut	7.3	9.4	5.9	7.5	9.7	6.0	4.0	4.0	3.9
Detroit	7.7	9.8	6.2	8.2	10.4	6.7	5.6	7.3	4.4
Hawaii	5.8	7.4	4.4	6.6	8.2	5.0	-	-	-
Iowa	8.0	10.1	6.6	8.1	10.2	6.6	-	-	-
Kentucky	7.7	9.9	6.2	7.9	10.0	6.3	5.4	8.0	3.8
Louisiana	7.8	9.8	6.4	8.5	10.8	6.9	5.7	6.8	4.9
New Jersey	7.6	9.7	6.0	7.9	10.1	6.3	5.3	7.2	3.9
New Mexico	6.3	7.8	5.1	6.3	8.0	5.1	-	-	-
Seattle-Puget Sound	7.9	10.6	5.9	8.1	11.0	6.0	5.8	7.2	-
Utah	7.0	9.2	5.2	7.1	9.3	5.2	-	-	-
9 SEER Areas ^b	7.3	9.4	5.7	7.7	10.0	6.0	5.1	6.4	4.1
11 SEER Areas ^b	7.1	9.1	5.6	7.5	9.7	5.9	5.0	6.2	4.2
13 SEER Areas ^b	7.1	9.1	5.6	7.5	9.7	5.9	5.0	6.2	4.2
17 SEER Areas ^b	7.2	9.2	5.7	7.6	9.7	6.0	5.3	6.6	4.3
Total U.S.	7.3	9.3	5.9	7.6	9.7	6.2	5.1	6.4	4.2

^a US Mortality Files, National Center for Health Statistics, Centers for Disease Control and Prevention. Rates are per 100,000 and are age-adjusted to the 2000 US Std Population (19 age groups - Census P25-1130).

^b The SEER 9 areas are San Francisco, Connecticut, Detroit, Hawaii, Iowa, New Mexico, Seattle, Utah and Atlanta.

The SEER 11 areas comprise the SEER 9 areas plus San Jose-Monterey and Los Angeles.

The SEER 13 areas comprise the SEER 11 areas plus the Alaska Native Registry and Rural Georgia.

The SEER 17 areas comprise the SEER 13 areas plus California excluding SF/SJM/LA, Kentucky, Louisiana and New Jersey.

- Statistic not shown. Rate based on less than 16 cases for the time interval.

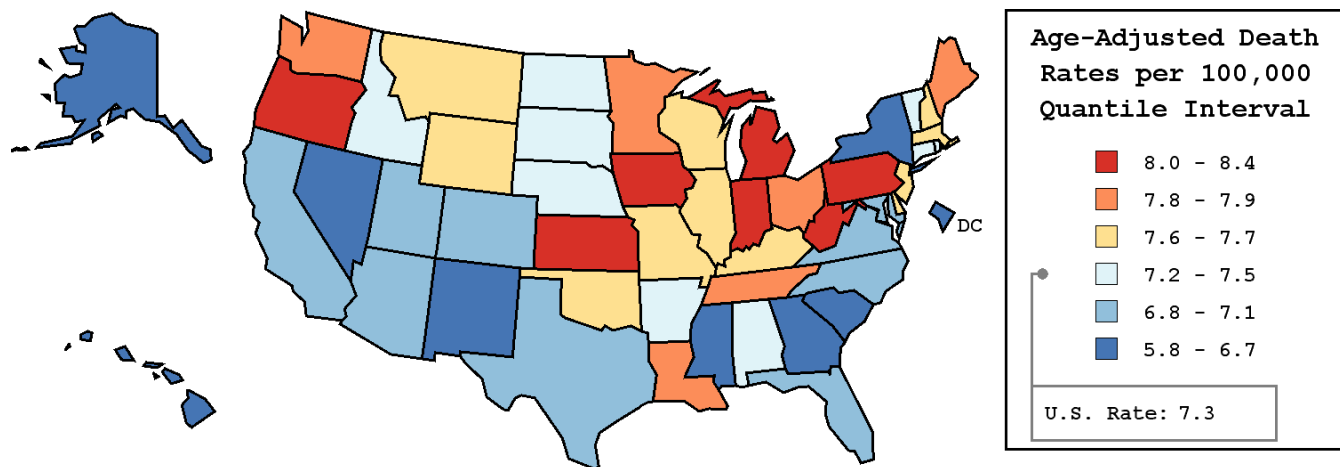
Table XIX-17
NON-HODGKIN LYMPHOMA

AVERAGE ANNUAL AGE-ADJUSTED CANCER DEATH^a RATES BY STATE, ALL RACES, 2001-2005

Males and Females

State	Rate	SE	Rank	PD
TOTAL U.S.	7.3	0.02		
High Five States				
Oregon	8.4 ^b	0.21	(01)	15.1 ^c
Michigan	8.3 ^b	0.13	(02)	13.7
Indiana	8.2 ^b	0.16	(03)	12.3
Kansas	8.1	0.24	(04)	11.0
West Virginia	8.0	0.27	(05)	9.6
Low Five States				
Nevada	6.4 ^b	0.26	(47)	-12.3
Alaska	6.4	0.62	(48)	-12.3
D.C.	6.4	0.47	(49)	-12.3
New Mexico	6.3 ^b	0.26	(50)	-13.7
Hawaii	5.8 ^b	0.29	(51)	-20.5 ^c

State	Rate	SE	Rank	PD	State	Rate	SE	Rank	PD
Alabama	7.3	0.18	(28)	0.0	Montana	7.6	0.39	(23)	4.1
Alaska	6.4	0.62	(48)	-12.3	Nebraska	7.4	0.28	(27)	1.4
Arizona	6.9	0.16	(40)	-5.5	Nevada	6.4 ^b	0.26	(47)	-12.3
Arkansas	7.3	0.22	(32)	0.0	New Hampshire	7.7	0.35	(15)	5.5
California	6.9 ^b	0.07	(42)	-5.5	New Jersey	7.6	0.13	(20)	4.1
Colorado	6.9	0.19	(41)	-5.5	New Mexico	6.3 ^b	0.26	(50)	-13.7
Connecticut	7.3	0.20	(29)	0.0	New York	6.7 ^b	0.08	(44)	-8.2
Delaware	7.6	0.42	(24)	4.1	North Carolina	7.1	0.13	(34)	-2.7
D.C.	6.4	0.47	(49)	-12.3	North Dakota	7.2	0.44	(33)	-1.4
Florida	7.0 ^b	0.08	(38)	-4.1	Ohio	7.9 ^b	0.11	(11)	8.2
Georgia	6.6 ^b	0.14	(46)	-9.6	Oklahoma	7.6	0.20	(22)	4.1
Hawaii	5.8 ^b	0.29	(51)	-20.5 ^c	Oregon	8.4 ^b	0.21	(01)	15.1 ^c
Idaho	7.5	0.34	(26)	2.7	Pennsylvania	8.0 ^b	0.10	(06)	9.6
Illinois	7.6	0.11	(19)	4.1	Rhode Island	7.5	0.35	(25)	2.7
Indiana	8.2 ^b	0.16	(03)	12.3	South Carolina	6.7	0.18	(43)	-8.2
Iowa	8.0	0.22	(07)	9.6	South Dakota	7.3	0.41	(31)	0.0
Kansas	8.1	0.24	(04)	11.0	Tennessee	7.9	0.16	(10)	8.2
Kentucky	7.7	0.19	(14)	5.5	Texas	7.1	0.09	(35)	-2.7
Louisiana	7.8	0.19	(13)	6.8	Utah	7.0	0.29	(36)	-4.1
Maine	7.8	0.32	(12)	6.8	Vermont	7.3	0.47	(30)	0.0
Maryland	7.0	0.16	(37)	-4.1	Virginia	6.9	0.14	(39)	-5.5
Massachusetts	7.6	0.15	(18)	4.1	Washington	7.9	0.17	(09)	8.2
Michigan	8.3 ^b	0.13	(02)	13.7	West Virginia	8.0	0.27	(05)	9.6
Minnesota	7.9	0.18	(08)	8.2	Wisconsin	7.6	0.16	(21)	4.1
Mississippi	6.7	0.22	(45)	-8.2	Wyoming	7.7	0.56	(17)	5.5
Missouri	7.7	0.16	(16)	5.5					



^a US Mortality Files, National Center for Health Statistics, Centers for Disease Control and Prevention. Rates are per 100,000 and are age-adjusted to the 2000 US Std Population (19 age groups - Census P25-1130).
^b Difference between state rate and total U.S. rate is statistically significant ($p \leq .0002$).
^c Absolute percent difference between state rate and total U.S. rate is 15% or more.
SE Standard error of the rate.
PD Percent difference between state rate and total U.S. rate.

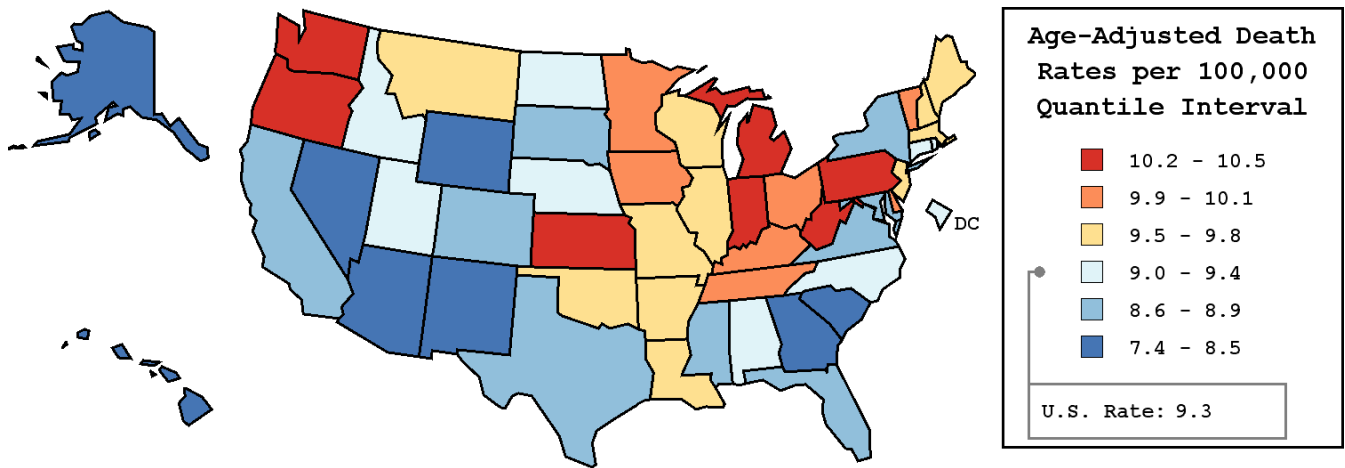
Table XIX-18
NON-HODGKIN LYMPHOMA

AVERAGE ANNUAL AGE-ADJUSTED CANCER DEATH^a RATES BY STATE, ALL RACES, 2001-2005

Males

State	Rate	SE	Rank	PD
TOTAL U.S.	9.3	0.04		
H High Five States				
Michigan	10.5 ^b	0.23	(01)	12.9
West Virginia	10.4	0.48	(02)	11.8
Kansas	10.4	0.42	(03)	11.8
Oregon	10.3	0.36	(04)	10.8
Indiana	10.3 ^b	0.29	(05)	10.8
L Low Five States				
South Carolina	8.2	0.32	(47)	-11.8
Wyoming	7.9	0.88	(48)	-15.1 ^c
New Mexico	7.8	0.45	(49)	-16.1 ^c
Nevada	7.6 ^b	0.42	(50)	-18.3 ^c
Hawaii	7.4 ^b	0.49	(51)	-20.4 ^c

State	Rate	SE	Rank	PD	State	Rate	SE	Rank	PD
Alabama	9.1	0.31	(33)	-2.2	Montana	9.8	0.67	(17)	5.4
Alaska	8.3	1.10	(46)	-10.8	Nebraska	9.1	0.49	(32)	-2.2
Arizona	8.5	0.26	(44)	-8.6	Nevada	7.6 ^b	0.42	(50)	-18.3 ^c
Arkansas	9.7	0.40	(19)	4.3	New Hampshire	9.6	0.61	(22)	3.2
California	8.8 ^b	0.12	(39)	-5.4	New Jersey	9.7	0.23	(20)	4.3
Colorado	8.7	0.34	(41)	-6.5	New Mexico	7.8	0.45	(49)	-16.1 ^c
Connecticut	9.4	0.35	(26)	1.1	New York	8.6 ^b	0.15	(42)	-7.5
Delaware	9.9	0.76	(12)	6.5	North Carolina	9.0	0.24	(34)	-3.2
D.C.	9.1	0.91	(30)	-2.2	North Dakota	9.1	0.76	(31)	-2.2
Florida	8.8	0.14	(36)	-5.4	Ohio	9.9	0.20	(11)	6.5
Georgia	8.3 ^b	0.25	(45)	-10.8	Oklahoma	9.8	0.36	(15)	5.4
Hawaii	7.4 ^b	0.49	(51)	-20.4 ^c	Oregon	10.3	0.36	(04)	10.8
Idaho	9.2	0.57	(28)	-1.1	Pennsylvania	10.2 ^b	0.18	(07)	9.7
Illinois	9.6	0.20	(23)	3.2	Rhode Island	9.3	0.62	(27)	0.0
Indiana	10.3 ^b	0.29	(05)	10.8	South Carolina	8.2	0.32	(47)	-11.8
Iowa	10.1	0.38	(08)	8.6	South Dakota	8.8	0.69	(38)	-5.4
Kansas	10.4	0.42	(03)	11.8	Tennessee	10.1	0.30	(10)	8.6
Kentucky	9.9	0.35	(13)	6.5	Texas	8.8	0.16	(37)	-5.4
Louisiana	9.8	0.34	(16)	5.4	Utah	9.2	0.50	(29)	-1.1
Maine	9.6	0.56	(24)	3.2	Vermont	9.9	0.87	(14)	6.5
Maryland	8.9	0.30	(35)	-4.3	Virginia	8.7	0.25	(40)	-6.5
Massachusetts	9.5	0.26	(25)	2.2	Washington	10.3	0.29	(06)	10.8
Michigan	10.5 ^b	0.23	(01)	12.9	West Virginia	10.4	0.48	(02)	11.8
Minnesota	10.1	0.31	(09)	8.6	Wisconsin	9.6	0.28	(21)	3.2
Mississippi	8.6	0.39	(43)	-7.5	Wyoming	7.9	0.88	(48)	-15.1 ^c
Missouri	9.8	0.28	(18)	5.4					



^a US Mortality Files, National Center for Health Statistics, Centers for Disease Control and Prevention. Rates are per 100,000 and are age-adjusted to the 2000 US Std Population (19 age groups - Census P25-1130).
^b Difference between state rate and total U.S. rate is statistically significant ($p \leq .0002$).
^c Absolute percent difference between state rate and total U.S. rate is 15% or more.
SE Standard error of the rate.
PD Percent difference between state rate and total U.S. rate.

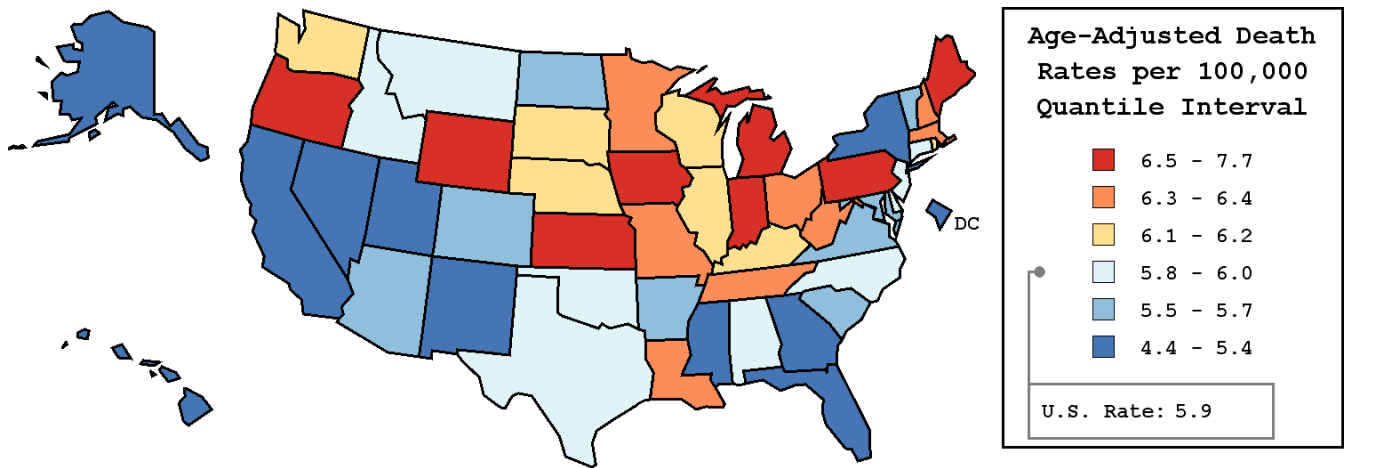
Table XIX-19
NON-HODGKIN LYMPHOMA

AVERAGE ANNUAL AGE-ADJUSTED CANCER DEATH^a RATES BY STATE, ALL RACES, 2001-2005

Females

State	Rate	SE	Rank	PD
TOTAL U.S.	5.9	0.03		
High Five States				
Wyoming	7.7	0.76	(01)	30.5 ^c
Oregon	7.0 ^b	0.26	(02)	18.6 ^c
Indiana	6.7 ^b	0.19	(03)	13.6
Michigan	6.7 ^b	0.15	(04)	13.6
Maine	6.6	0.39	(05)	11.9
Low Five States				
Utah	5.2	0.33	(47)	-11.9
New Mexico	5.1	0.32	(48)	-13.6
Alaska	4.9	0.74	(49)	-16.9 ^c
D.C.	4.5	0.51	(50)	-23.7 ^c
Hawaii	4.4 ^b	0.34	(51)	-25.4 ^c

State	Rate	SE	Rank	PD	State	Rate	SE	Rank	PD
Alabama	6.0	0.21	(25)	1.7	Montana	5.8	0.46	(28)	-1.7
Alaska	4.9	0.74	(49)	-16.9 ^c	Nebraska	6.2	0.34	(18)	5.1
Arizona	5.7	0.19	(34)	-3.4	Nevada	5.4	0.32	(45)	-8.5
Arkansas	5.5	0.25	(40)	-6.8	New Hampshire	6.4	0.42	(12)	8.5
California	5.4 ^b	0.08	(43)	-8.5	New Jersey	6.0	0.15	(24)	1.7
Colorado	5.6	0.23	(37)	-5.1	New Mexico	5.1	0.32	(48)	-13.6
Connecticut	5.9	0.23	(27)	0.0	New York	5.4 ^b	0.10	(44)	-8.5
Delaware	5.8	0.48	(32)	-1.7	North Carolina	5.8	0.15	(31)	-1.7
D.C.	4.5	0.51	(50)	-23.7 ^c	North Dakota	5.7	0.52	(35)	-3.4
Florida	5.4 ^b	0.10	(41)	-8.5	Ohio	6.4 ^b	0.13	(11)	8.5
Georgia	5.4	0.16	(42)	-8.5	Oklahoma	5.8	0.23	(30)	-1.7
Hawaii	4.4 ^b	0.34	(51)	-25.4 ^c	Oregon	7.0 ^b	0.26	(02)	18.6 ^c
Idaho	6.0	0.41	(26)	1.7	Pennsylvania	6.5 ^b	0.12	(07)	10.2
Illinois	6.2	0.13	(17)	5.1	Rhode Island	6.2	0.41	(19)	5.1
Indiana	6.7 ^b	0.19	(03)	13.6	South Carolina	5.7	0.22	(33)	-3.4
Iowa	6.6	0.26	(06)	11.9	South Dakota	6.1	0.49	(23)	3.4
Kansas	6.5	0.28	(08)	10.2	Tennessee	6.4	0.19	(13)	8.5
Kentucky	6.2	0.23	(20)	5.1	Texas	5.8	0.11	(29)	-1.7
Louisiana	6.4	0.23	(10)	8.5	Utah	5.2	0.33	(47)	-11.9
Maine	6.6	0.39	(05)	11.9	Vermont	5.5	0.54	(39)	-6.8
Maryland	5.6	0.19	(38)	-5.1	Virginia	5.6	0.17	(36)	-5.1
Massachusetts	6.4	0.18	(09)	8.5	Washington	6.1	0.19	(21)	3.4
Michigan	6.7 ^b	0.15	(04)	13.6	West Virginia	6.3	0.32	(16)	6.8
Minnesota	6.3	0.21	(14)	6.8	Wisconsin	6.1	0.19	(22)	3.4
Mississippi	5.3	0.25	(46)	-10.2	Wyoming	7.7	0.76	(01)	30.5 ^c
Missouri	6.3	0.19	(15)	6.8					



^a US Mortality Files, National Center for Health Statistics, Centers for Disease Control and Prevention. Rates are per 100,000 and are age-adjusted to the 2000 US Std Population (19 age groups - Census P25-1130).
^b Difference between state rate and total U.S. rate is statistically significant ($p \leq .0002$).
^c Absolute percent difference between state rate and total U.S. rate is 15% or more.
SE Standard error of the rate.
PD Percent difference between state rate and total U.S. rate.

Table XIX-20
NON-HODGKIN LYMPHOMA (Invasive)

Estimated United States Cancer Prevalence Counts^a on January 1, 2005
By Race/Ethnicity, Sex and Years Since Diagnosis

Years Since Diagnosis	0 to <5	5 to <10	10 to <15	15 to <20	20 to <25	25 to <30	0 to <15 ^e	0 to <30 ^e	>=30 ^g	Complete ^h
<u>Race/Sex</u>										
All Races ^b	173,017	100,265	56,408	32,341	17,996	9,412	329,689	389,438	12,259	401,697
Males	89,995	51,648	29,367	16,592	9,217	4,558	171,009	201,376	6,445	207,821
Females	83,022	48,617	27,041	15,749	8,779	4,854	158,680	188,062	5,814	193,876
White ^b	153,057	89,140	50,726	29,470	16,353	8,734	292,923	347,479	12,455	359,934
Males	79,876	45,756	26,361	15,197	8,400	4,257	151,993	179,846	6,944	186,790
Females	73,181	43,384	24,365	14,273	7,953	4,477	140,930	167,633	5,511	173,144
Black ^b	12,833	7,065	3,581	1,858	1,067	498	23,479	26,901	921	27,822
Males	6,443	3,773	1,853	912	509	207	12,069	13,697	407	14,104
Females	6,390	3,292	1,728	946	558	291	11,410	13,204	514	13,718
Asian/Pacific Islander ^c	4,285	2,295	1,254	+	+	+	7,836	+	+	+
Males	2,186	1,197	621	+	+	+	4,005	+	+	+
Females	2,099	1,098	633	+	+	+	3,831	+	+	+
Hispanic ^d	10,689	5,477	2,903	+	+	+	19,068	+	+	+
Males	5,761	2,836	1,424	+	+	+	10,020	+	+	+
Females	4,928	2,641	1,479	+	+	+	9,048	+	+	+

Estimated prevalence percent^a on January 1, 2005, of the SEER 11 population diagnosed in the previous 15 years
By Age at Prevalence, Race/Ethnicity and Sex

Age at Prevalence	Age Specific (Crude)										Age-Adjusted ^f
	All Ages	0-9	10-19	20-29	30-39	40-49	50-59	60-69	70-79	80+	All Ages
<u>Race/Sex</u>											
All Races ^c	0.1006%	0.0021%	0.0112%	0.0187%	0.0364%	0.0787%	0.1604%	0.3012%	0.4474%	0.4835%	0.1043%
Males	0.1059%	0.0028%	0.0153%	0.0230%	0.0418%	0.0925%	0.1828%	0.3385%	0.4973%	0.5542%	0.1190%
Females	0.0953%	0.0014%	0.0069%	0.0140%	0.0308%	0.0650%	0.1392%	0.2676%	0.4092%	0.4445%	0.0917%
White ^c	0.1115%	0.0022%	0.0116%	0.0193%	0.0379%	0.0826%	0.1706%	0.3249%	0.4853%	0.5131%	0.1114%
Males	0.1167%	0.0028%	0.0159%	0.0238%	0.0440%	0.0964%	0.1939%	0.3638%	0.5367%	0.5863%	0.1265%
Females	0.1063%	0.0016%	0.0072%	0.0145%	0.0315%	0.0685%	0.1477%	0.2889%	0.4451%	0.4732%	0.0980%
Black ^c	0.0598%	0.0019%	0.0082%	0.0187%	0.0360%	0.0745%	0.1346%	0.2137%	0.2478%	0.2167%	0.0733%
Males	0.0654%	0.0021%	0.0126%	0.0228%	0.0410%	0.0916%	0.1608%	0.2442%	0.2654%	0.2509%	0.0851%
Females	0.0548%	0.0016%	0.0038%	0.0149%	0.0317%	0.0594%	0.1130%	0.1898%	0.2362%	0.2003%	0.0638%
Asian/Pacific Islander ^c	0.0643%	0.0018%	0.0123%	0.0146%	0.0242%	0.0511%	0.0996%	0.1784%	0.2942%	0.3498%	0.0685%
Males	0.0671%	0.0028%	0.0152%	0.0192%	0.0263%	0.0604%	0.1036%	0.1919%	0.3350%	0.4053%	0.0773%
Females	0.0616%	-	0.0092%	0.0101%	0.0223%	0.0425%	0.0961%	0.1670%	0.2647%	0.3129%	0.0614%
Hispanic ^d	0.0451%	0.0020%	0.0088%	0.0123%	0.0273%	0.0558%	0.1188%	0.2122%	0.3499%	0.3409%	0.0771%
Males	0.0456%	0.0024%	0.0124%	0.0153%	0.0313%	0.0627%	0.1307%	0.2136%	0.3696%	0.3658%	0.0831%
Females	0.0445%	0.0015%	0.0050%	0.0087%	0.0226%	0.0485%	0.1077%	0.2110%	0.3357%	0.3266%	0.0714%

^a US 2005 cancer prevalence counts are based on 2005 cancer prevalence proportions from the SEER registries and 1/1/2005 US population estimates based on the average of 2004 and 2005 population estimates from the US Bureau of the Census. Prevalence was calculated using the First Malignant Primary Only for a person.

^{b c d} Statistics based on (b) SEER 9 Areas (c) SEER 11 Areas and Rural Georgia (d) NHIA for Hispanic for SEER 11 Areas and Rural Georgia.

^e Maximum limited-duration prevalence: 30 years for 1975-2005 SEER 9 data; 15 years for 1990-2005 SEER 11 data (used to calculate prevalence for Hispanics and Asian Pacific Islanders).

^f Percentages are age-adjusted to the 2000 US Standard Population (19 age groups - Census P25-1130) by 5-year age groups.

^{g h} (g) Cases diagnosed more than 30 years ago were estimated using the completeness index method (Capocaccia et. al. 1997, Merrill et. al. 2000). (h) Complete prevalence is obtained by summing 0 to <30 and >=30.

- Statistic not shown. Statistic based on fewer than 5 cases estimated alive in SEER for the time interval.

+ Not available.

SEER Incidence, Delay Adjusted Incidence and US Death Rates^a Non-Hodgkin Lymphoma, by Race and Sex

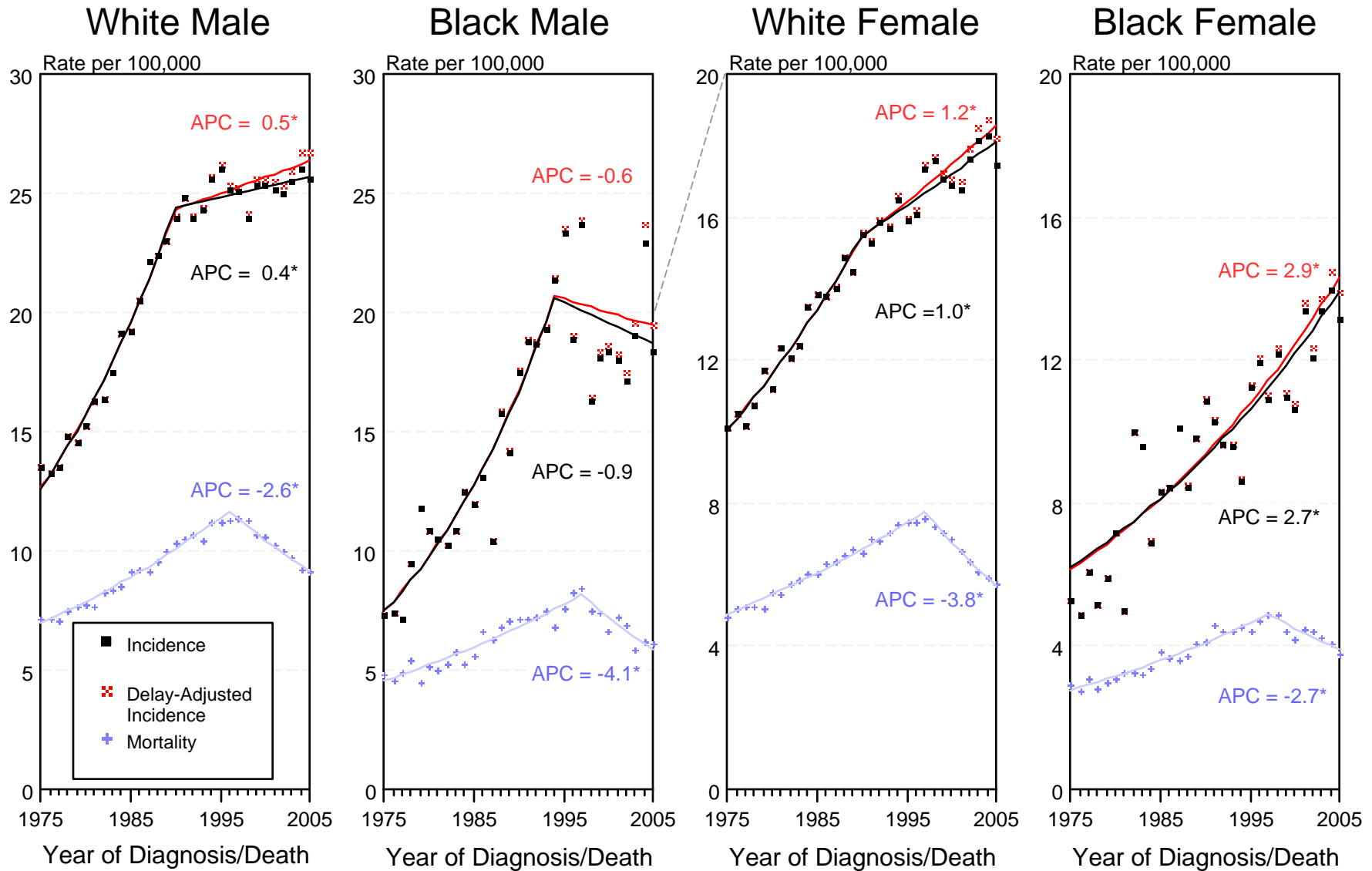


Figure XIX-1

^a Source: SEER 9 areas and US Mortality Files (National Center for Health Statistics, CDC). Rates are age-adjusted to the 2000 US Std Population (19 age groups - Census P25-1103). Regression lines and APCs are calculated using the Joinpoint Regression Program Version 3.3.1, April 2008, National Cancer Institute. The APC is the Annual Percent Change for the regression line segments. The APC shown on the graph is for the most recent trend.

* The APC is significantly different from zero ($p < 0.05$).

SEER Incidence and US Death Rates^a Non-Hodgkin Lymphoma, Both Sexes

Joinpoint Analyses for Whites and Blacks from 1975-2005
and for Asian/Pacific Islanders, American Indians/Alaska Natives and Hispanics from 1992-2005

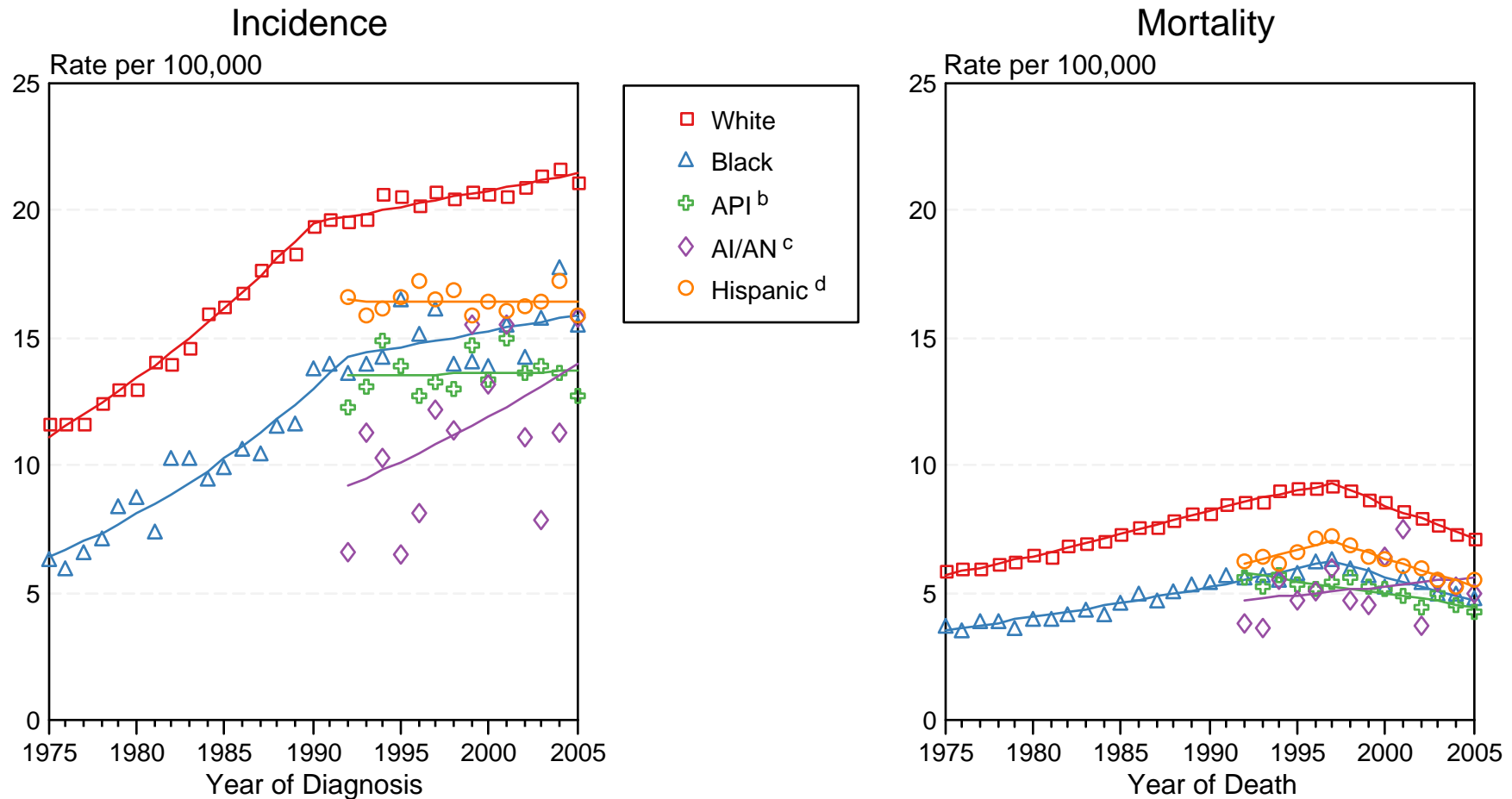


Figure XIX-2

Source: Incidence data for whites and blacks are from the SEER 9 areas (San Francisco, Connecticut, Detroit, Hawaii, Iowa, New Mexico, Seattle, Utah, Atlanta). Incidence data for Asian/Pacific Islanders, American Indians/Alaska Natives and Hispanics are from the SEER 13 Areas (SEER 9 Areas, San Jose-Monterey, Los Angeles, Alaska Native Registry and Rural Georgia). Mortality data are from US Mortality Files, National Center for Health Statistics, CDC.

^a Rates are age-adjusted to the 2000 US Std Population (19 age groups - Census P25-1103).

Regression lines are calculated using the Joinpoint Regression Program Version 3.3.1, April 2008, National Cancer Institute. Joinpoint analyses for Whites and Blacks during the 1975-2005 period allow a maximum of 4 joinpoints. Analyses for other ethnic groups during the period 1992-2005 allow a maximum of 3 joinpoints.

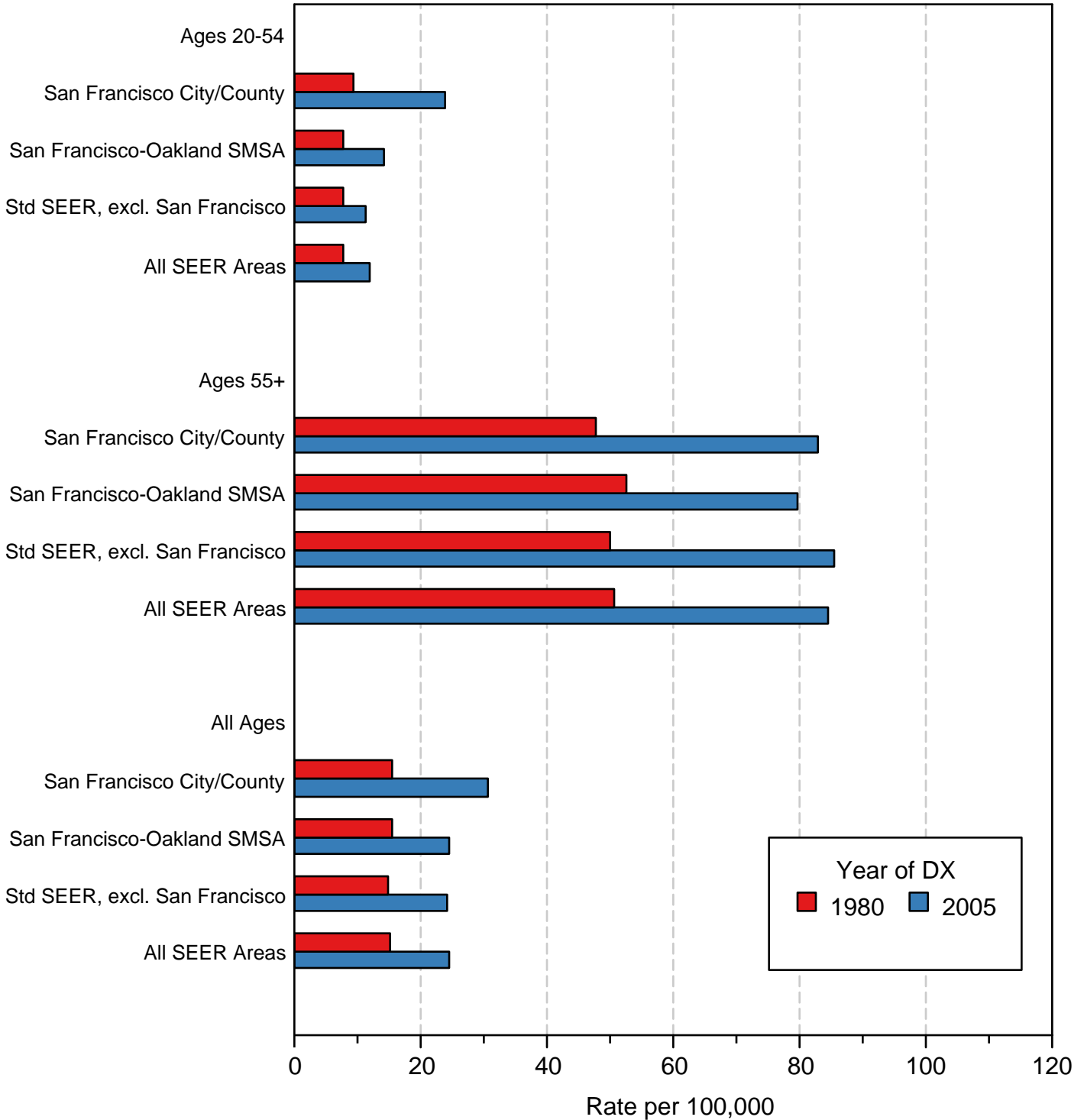
^b API = Asian/Pacific Islander.

^c AI/AN = American Indian/Alaska Native. Rates for American Indian/Alaska Native are based on the CHSDA(Contract Health Service Delivery Area) counties.

^d Hispanic is not mutually exclusive from whites, blacks, Asian/Pacific Islanders, and American Indians/Alaska Natives. Incidence data for Hispanics are based on NHIA and exclude cases from the Alaska Native Registry. Mortality data for Hispanics exclude cases from Connecticut, Maine, Maryland, Minnesota, New Hampshire, New York, North Dakota, Oklahoma, and Vermont.

Non-Hodgkin Lymphoma Incidence Rates, 1980 vs 2005 Males

Age/Area



Source: SEER 9 areas. Rates are age-adjusted to the 2000 US Std Population (19 age groups - Census P25-1103).

Non-Hodgkin Lymphoma SEER Incidence by Age 1975-1977 vs 203-2005 All Races, Males

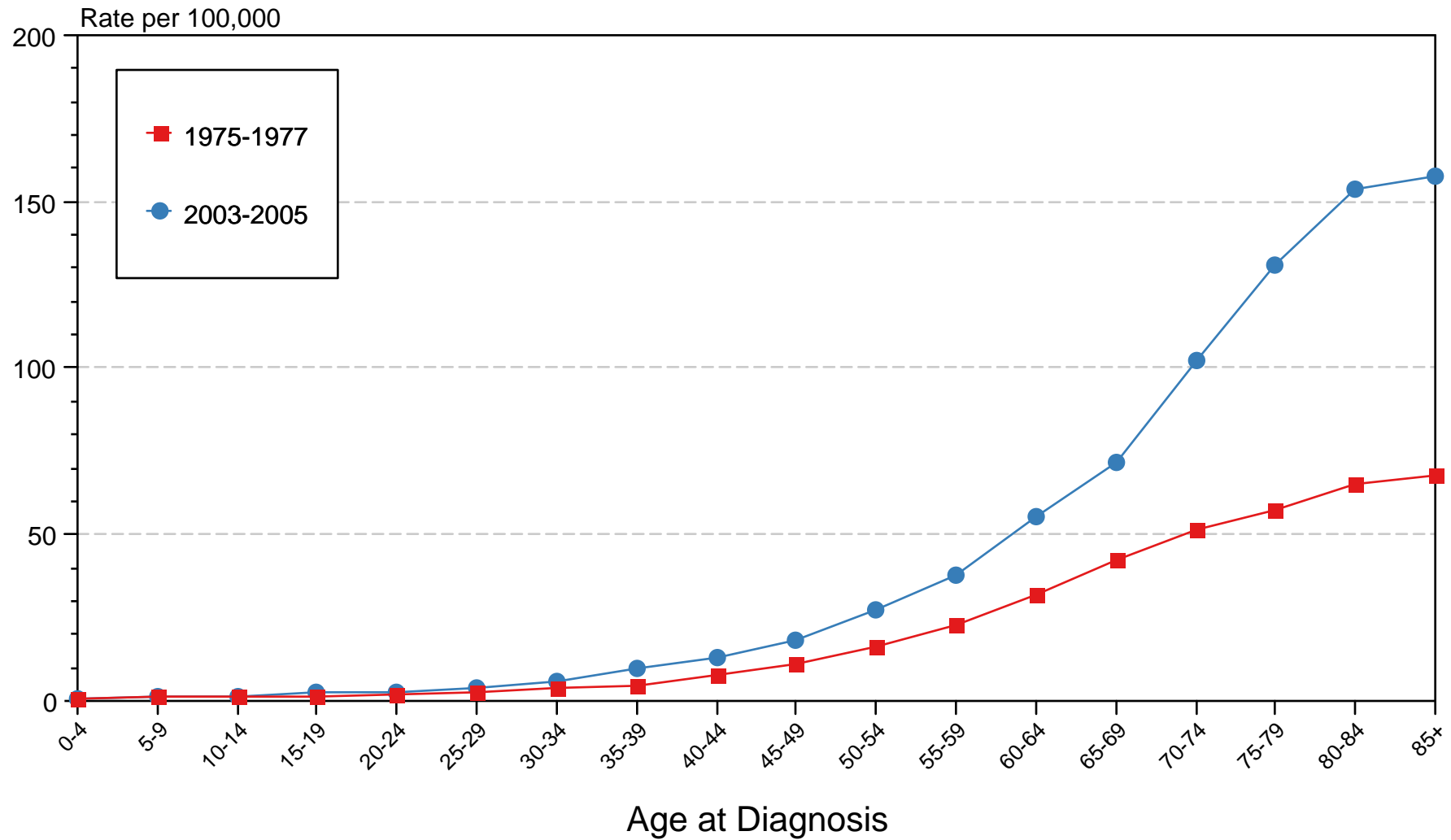


Figure XIX-4

Source: SEER 9 areas. Rates are age-adjusted as appropriate to the 2000 US Std Population (19 age groups - Census P25-1103).