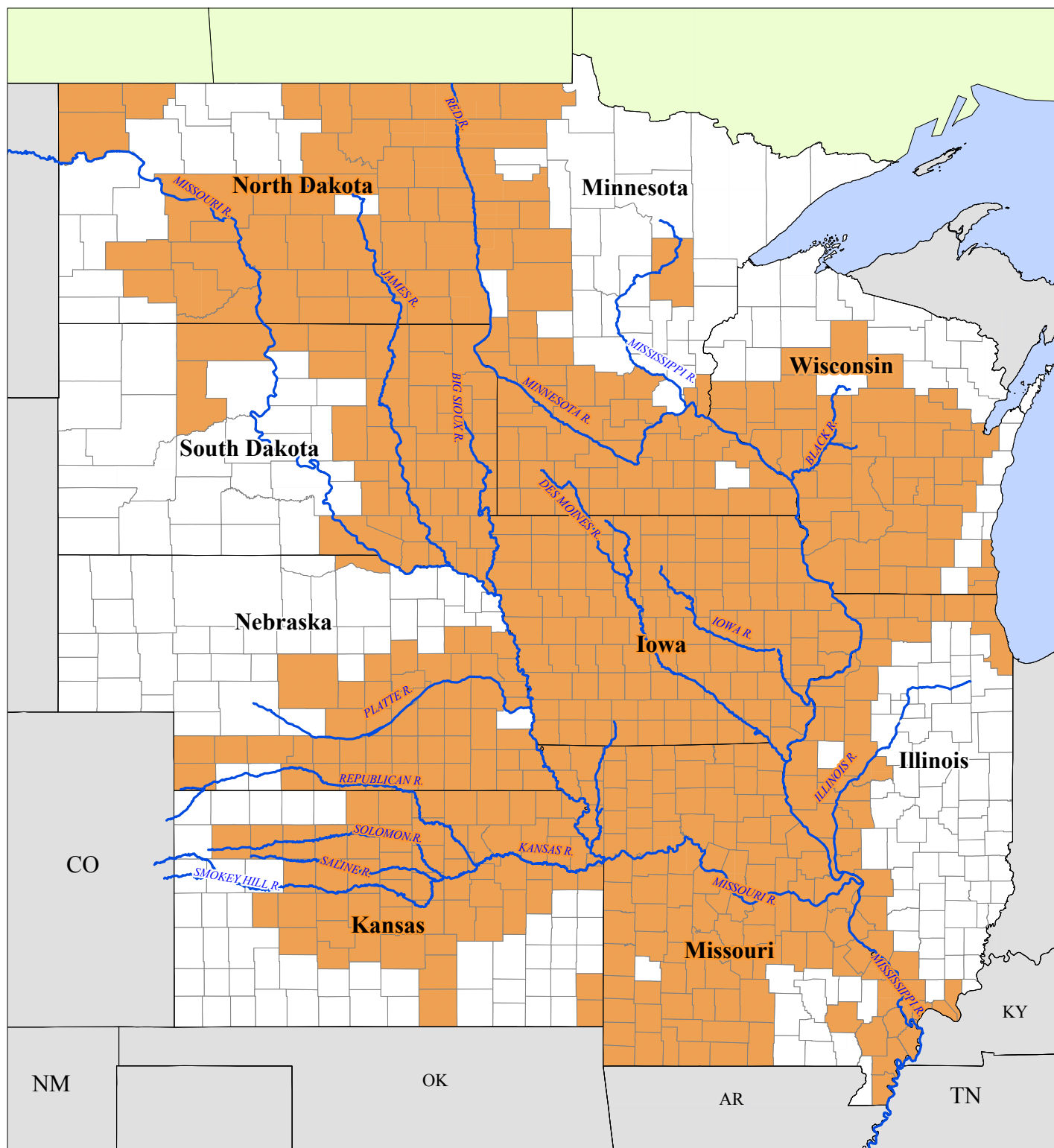


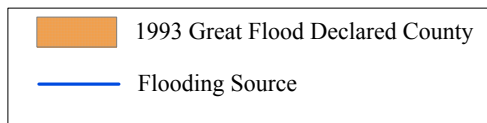
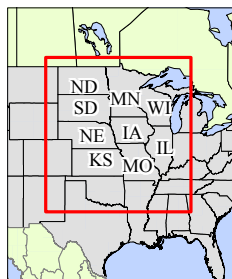
Appendix A

Maps

Declared Counties for the Great Midwest Flood of 1993



Location Map



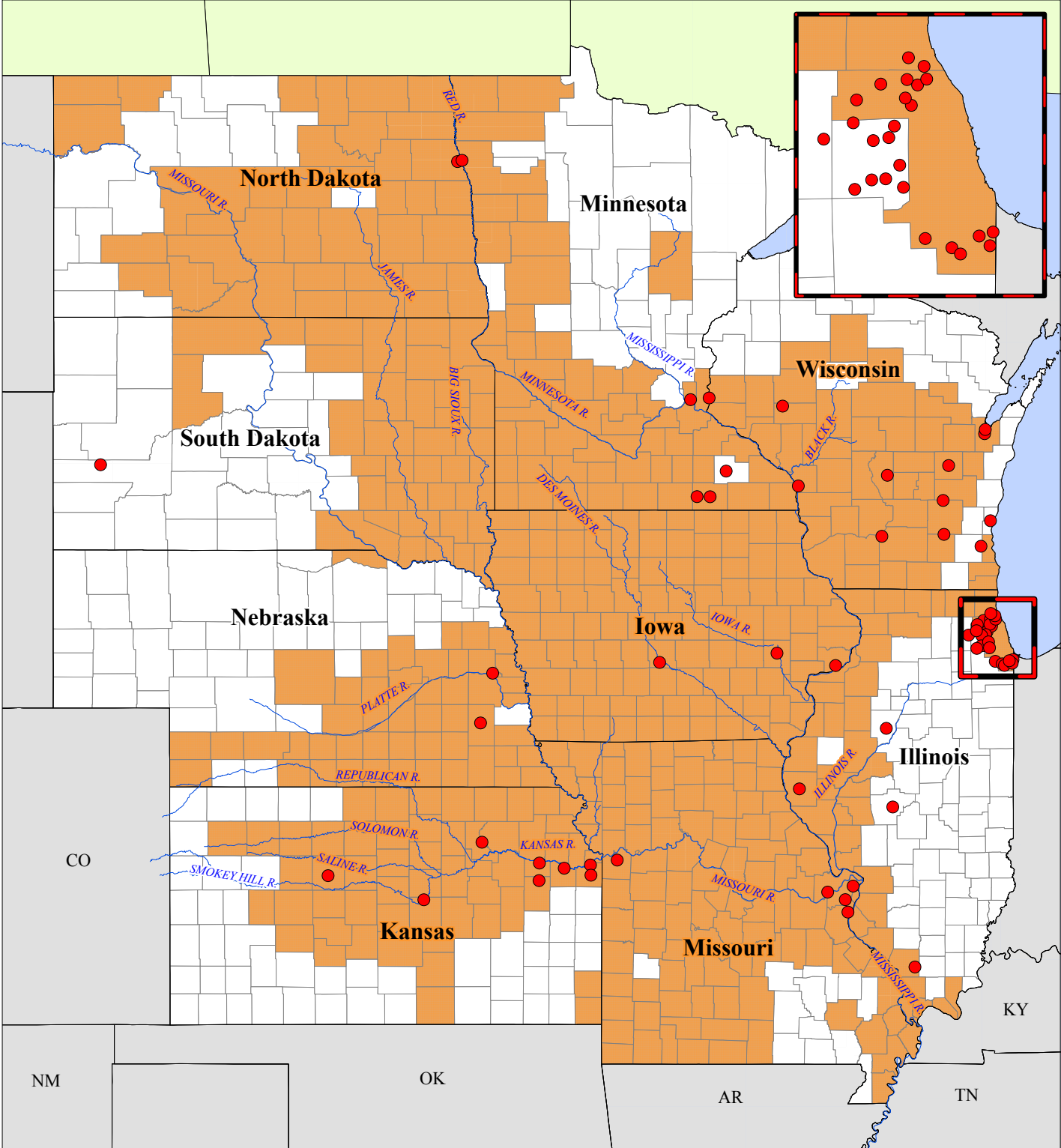
U.S. Department of Homeland Security



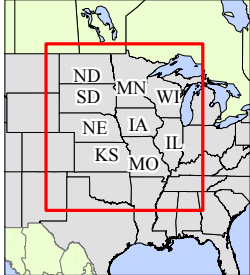
FEMA

Mitigation Division
 ITS Mapping and Analysis Center
 Washington, DC
 05/07/2003

Locations of Current CRS Communities for the 1993 Midwest Flood Region



Location Map



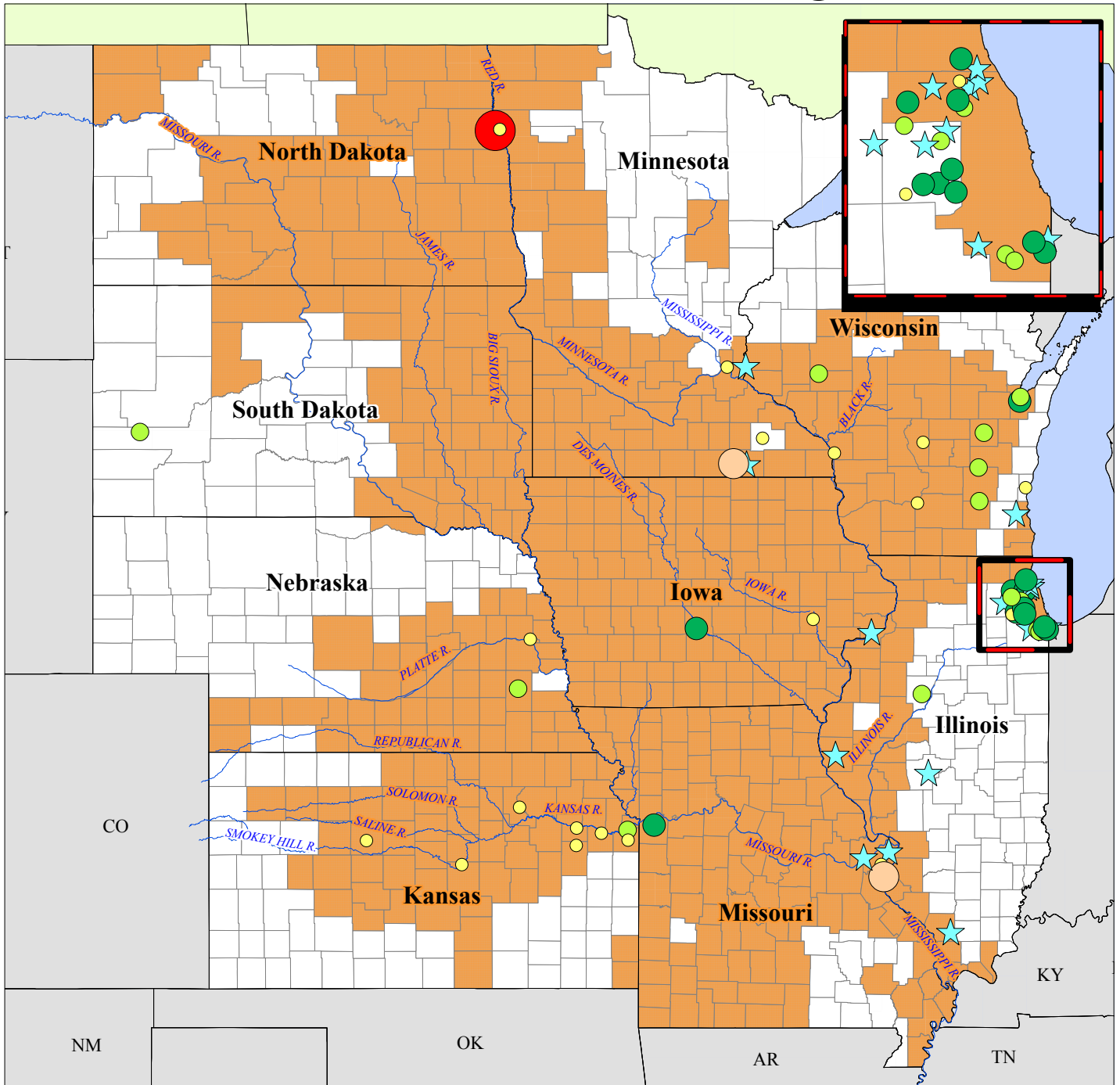
| | |
|--|----------------------------------|
| ● | CRS Community |
| | 1993 Great Flood Declared County |
| — | Flooding Source |

U.S. Department of Homeland Security

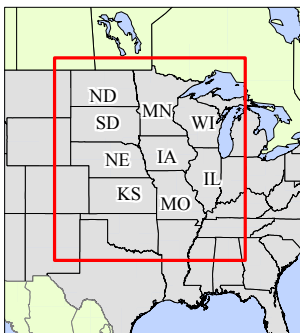


Mitigation Division
ITS Mapping and Analysis Center
Washington, DC
05/07/2003

Improvement in CRS Community Ratings for the 1993 Midwest Flood Region



Location Map



Class Improvement for Each Community from July 1993 to January 2003

- ★ New CRS Communities
- +4 Class Improvement
- +3 Class Improvement
- +2 Class Improvement
- +1 Class Improvement
- No Improvement

■ 1993 Great Flood Declared County

— Flooding Source

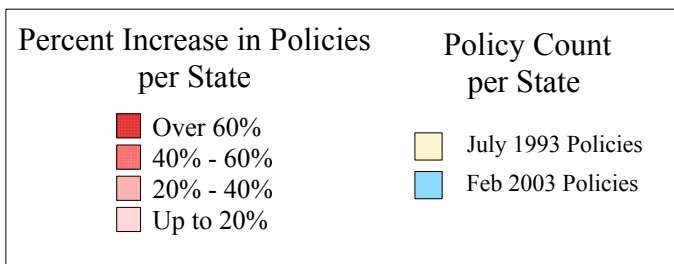
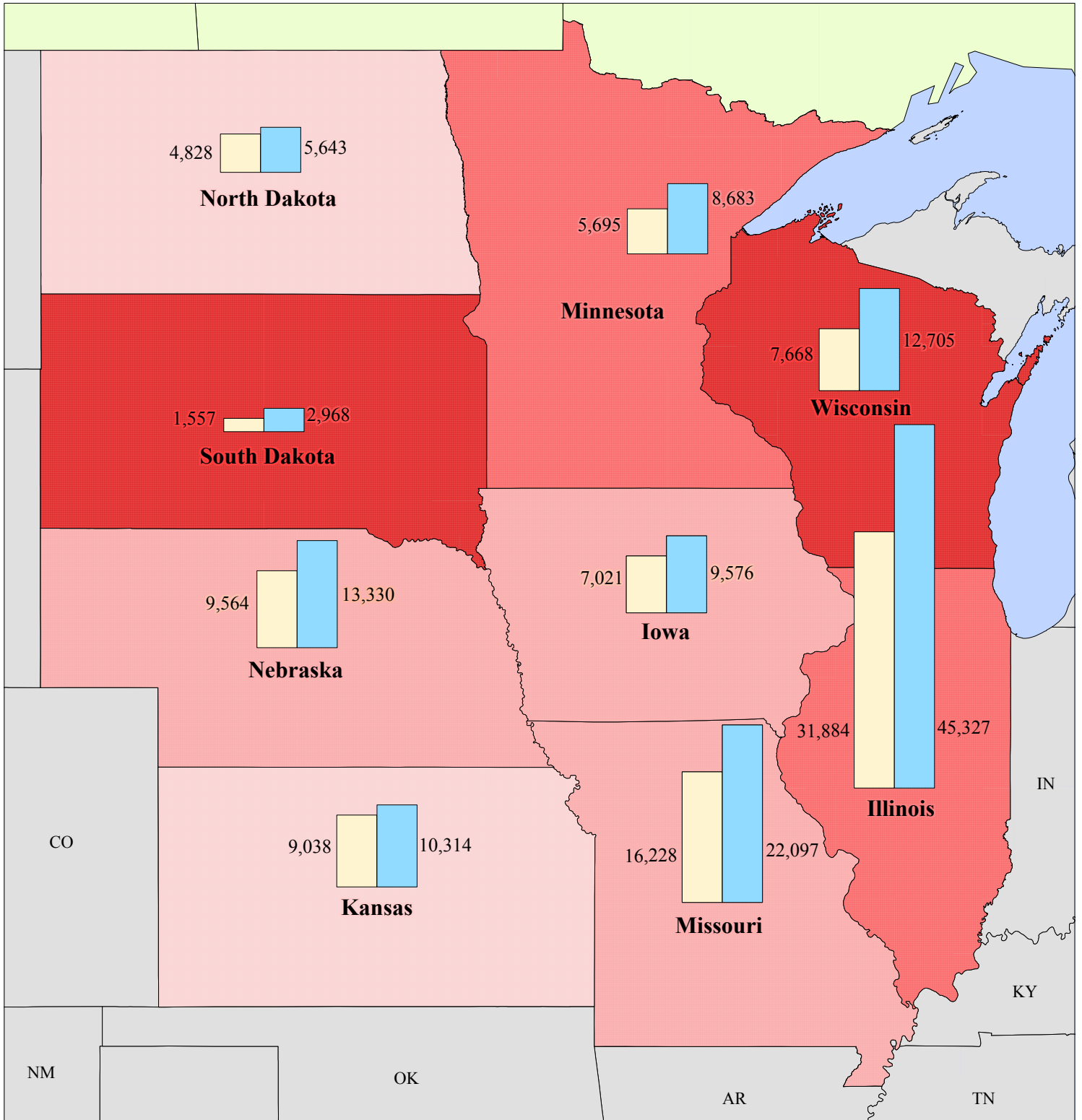
U.S. Department of Homeland Security



FEMA

Mitigation Division
ITS Mapping and Analysis Center
Washington, DC
4/08/2003

Policy Growth from July 1993 to February 2003 for the 1993 Midwest Flood Region



U.S. Department of Homeland Security



FEMA

Mitigation Division
ITS Mapping and Analysis Center
Washington, DC
05/07/2003

