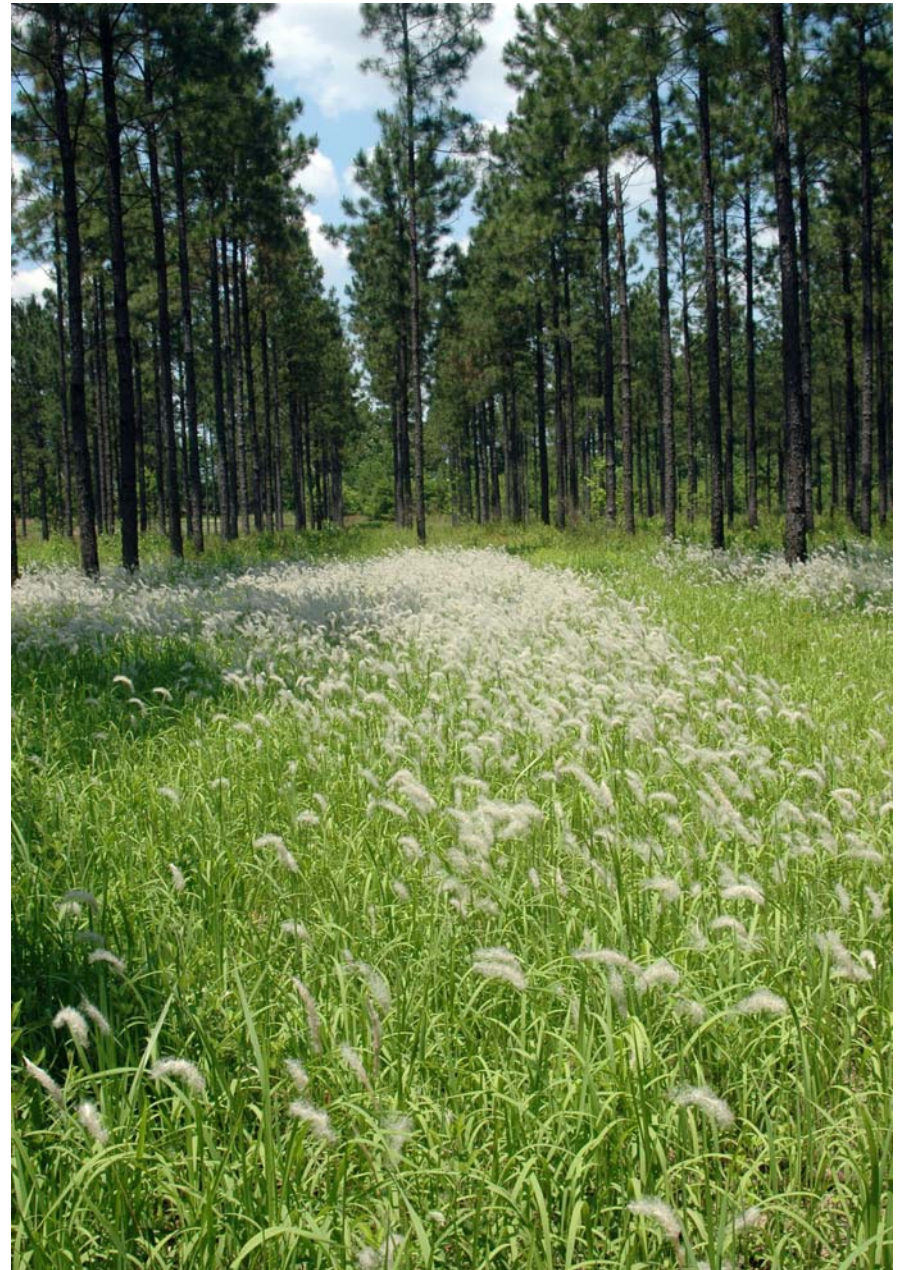


Cogongrass

South Carolina's Worst Invasive Plant Pest Species

Cogongrass is considered to be one of the top ten worst weeds in the world. This aggressive plant forms dense stands that can quickly cover large areas, forming a mat of thatch and leaves that makes it nearly impossible for native plants to co-exist. It is mostly unpalatable to both wildlife and livestock, and can create a significant fire hazard. Please help us to stop the spread of cogongrass. Using the pictures and descriptions below, report any sightings of cogongrass infestation to the Clemson Extension office in your county or to Clemson University's Department of Plant Industry at (864) 646-2130 or scompto@clemson.edu.

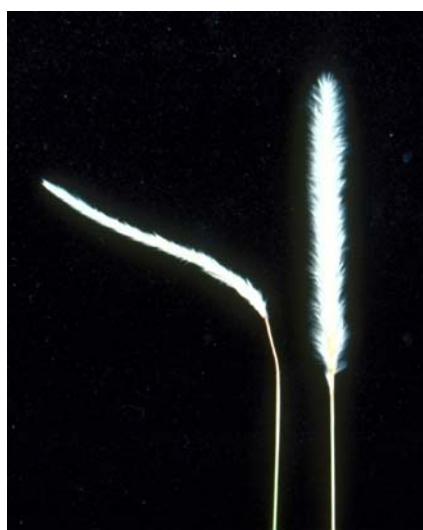


Chris Evans, University of Georgia

Cogongrass is an aggressive perennial grass that grows from 2 to over 4 feet in height, in full sunlight to partial shade.



Chris Evans, University of Georgia



L. M. Marsh, Florida Dept. of Agriculture & Consumer Services

Flowers are showy silvery-white plumes.



G. Keigh Douce, University of Georgia

Leaves are yellow-green blades about an inch wide and have sharp-pointed tips.



James R. Meeker, USDA Forest Service

Notice the prominent off-center white midrib.



Ted Bodner, Southern Weed Science Society

For more information, contact the Clemson Extension office in your county or go to www.clemson.edu/for/cogon.