

Table I-4
AGE-ADJUSTED SEER INCIDENCE AND U.S. DEATH RATES AND 5-YEAR RELATIVE SURVIVAL RATES
 By Primary Cancer Site, Sex and Time Period

All Races

Site	Incidence ^a (2001-2005)			US Mortality ^b (2001-2005)			Survival ^c (1996-2004)		
	Total	Males	Females	Total	Males	Females	Total	Males	Females
All Sites	467.4	549.3	411.0	189.8	234.4	159.9	65.3	65.1	65.4
Oral Cavity & Pharynx:	10.4	15.5	6.1	2.6	4.0	1.5	59.7	58.3	62.7
Lip	0.8	1.4	0.4	0.0	0.0	0.0	90.5	90.6	89.8
Tongue	2.8	4.1	1.6	0.6	0.9	0.4	57.7	57.1	58.9
Salivary gland	1.2	1.6	0.9	0.2	0.4	0.1	74.1	68.9	80.7
Floor of mouth	0.7	1.0	0.4	0.0	0.1	0.0	51.3	49.1	56.1
Gum & other oral cavity	1.5	1.8	1.3	0.4	0.5	0.3	59.1	55.4	63.5
Nasopharynx	0.7	1.0	0.4	0.2	0.3	0.1	58.9	57.7	61.7
Tonsil	1.5	2.5	0.6	0.2	0.3	0.1	63.1	63.9	59.5
Oropharynx	0.3	0.5	0.2	0.2	0.3	0.1	36.7	36.5	36.9
Hypopharynx	0.7	1.2	0.3	0.1	0.2	0.0	29.4	29.4	29.5
Other oral cavity & pharynx	0.2	0.3	0.1	0.5	0.9	0.3	32.7	32.4	33.0
Digestive System:	88.9	108.8	73.2	45.2	57.9	35.3	44.8	42.9	47.0
Esophagus	4.6	7.8	2.0	4.4	7.8	1.7	15.8	15.5	17.0
Stomach	8.0	11.3	5.5	4.1	5.7	2.9	24.7	23.1	27.3
Small intestine	1.8	2.2	1.6	0.4	0.4	0.3	57.8	56.9	58.8
Colon & Rectum:	50.6	59.2	43.8	18.8	22.7	15.9	64.4	64.5	64.3
Colon	36.6	41.4	32.9	-	-	-	63.9	64.4	63.4
Rectum	14.0	17.9	10.9	-	-	-	65.6	64.8	66.7
Anus, anal canal & anorectum	1.5	1.3	1.7	0.2	0.2	0.2	66.5	60.7	70.7
Liver & Intrahep:	6.4	9.9	3.5	5.0	7.3	3.1	11.7	11.4	12.4
Liver	5.9	9.2	3.0	3.9	6.0	2.1	12.3	11.8	13.6
Intrahep bile duct	0.6	0.7	0.5	1.1	1.3	1.0	6.3	6.2	6.3
Gallbladder	1.2	0.8	1.5	0.7	0.5	0.8	14.9	13.7	15.3
Other biliary	1.8	2.1	1.5	0.5	0.6	0.5	18.5	19.3	17.7
Pancreas	11.5	13.0	10.3	10.6	12.2	9.3	5.1	5.0	5.2
Retroperitoneum	0.4	0.4	0.4	0.1	0.1	0.1	51.8	48.5	55.0
Peritoneum, omentum & mesentery	0.7	0.1	1.1	0.2	0.1	0.4	30.8	41.4	29.9
Other digestive system	0.5	0.6	0.5	0.3	0.3	0.2	8.9	7.7	9.8
Respiratory System:	68.4	87.0	54.6	55.7	74.8	41.7	18.6	18.1	19.3
Nose, nasal cavity & middle ear	0.7	0.9	0.5	0.2	0.2	0.1	54.3	51.8	57.8
Larynx	3.6	6.4	1.3	1.3	2.3	0.5	62.5	63.8	57.6
Lung & bronchus	63.9	79.4	52.6	54.1	72.0	41.0	15.2	13.1	17.6
Pleura ^d	0.0	0.1	0.0	0.1	0.2	0.0	30.1	29.1	26.2
Trachea & other respiratory organs	0.2	0.3	0.1	0.1	0.1	0.1	47.6	46.4	49.4
Bones & joints	0.9	1.0	0.8	0.4	0.5	0.4	68.1	64.7	72.5
Soft tissue (incl heart)	3.1	3.8	2.6	1.3	1.4	1.1	66.7	66.7	66.7
Skin (ex basal & squam):	21.1	27.1	17.0	3.5	5.3	2.2	90.9	88.8	93.4
Melanoma of the skin	19.4	24.6	15.6	2.7	3.9	1.7	91.2	89.1	93.7
Other non-epithelial skin	1.8	2.4	1.4	0.8	1.4	0.4	87.7	85.0	90.8
Breast	68.5	1.2	126.1	14.1	0.3	25.0	88.7	85.1	88.7
Breast (<i>in situ</i>)	15.8	0.1	29.6	-	-	-	100.0	100.0	100.0

Note: Incidence and death rates are per 100,000 and are age-adjusted to the 2000 US Std Population (19 age groups - Census P25-1130).

^a SEER 17 areas (San Francisco, Connecticut, Detroit, Hawaii, Iowa, New Mexico, Seattle, Utah, Atlanta, San Jose-Monterey, Los Angeles, Alaska Native Registry, Rural Georgia, California excluding SF/SJM/LA, Kentucky, Louisiana and New Jersey).

^b US Mortality Files, National Center for Health Statistics, Centers for Disease Control and Prevention.

^c SEER 17 areas. California excluding SF/SJM/LA, Kentucky, Louisiana, and New Jersey contribute cases for diagnosis years 2000-2004. The remaining 13 SEER Areas contribute cases for the entire period 1996-2004.

^d Mesotheliomas of the Pleura are included in the separate group Mesothelioma for incidence but are included in the Pleura grouping for mortality.

- Statistic could not be calculated due to less than 16 cases in the time interval.

Table I-4 - continued
AGE-ADJUSTED SEER INCIDENCE AND U.S. DEATH RATES AND 5-YEAR RELATIVE SURVIVAL RATES
 By Primary Cancer Site, Sex and Time Period

All Races

Site	Incidence ^a (2001-2005)			US Mortality ^b (2001-2005)			Survival ^c (1996-2004)		
	Total	Males	Females	Total	Males	Females	Total	Males	Females
Female Genital System:	26.2	-	48.7	9.2	-	16.4	69.8	-	69.8
Cervix uteri	4.4	-	8.4	1.3	-	2.5	71.2	-	71.2
Corpus uteri	12.3	-	22.8	1.1	-	1.9	83.9	-	83.9
Uterus, NOS	0.3	-	0.6	1.3	-	2.2	30.1	-	30.1
Ovary ^d	7.3	-	13.3	5.0	-	8.8	45.5	-	45.5
Vagina	0.4	-	0.7	0.1	-	0.2	51.0	-	51.0
Vulva	1.2	-	2.2	0.3	-	0.5	76.9	-	76.9
Other female genital system	0.4	-	0.7	0.1	-	0.2	64.5	-	64.5
Male Genital System:	75.2	169.4	-	10.4	27.2	-	98.6	98.6	-
Prostate	72.0	163.0	-	10.1	26.7	-	98.9	98.9	-
Testis	2.7	5.4	-	0.1	0.3	-	95.5	95.5	-
Penis	0.4	0.8	-	0.1	0.2	-	68.3	68.3	-
Other male genital system	0.1	0.2	-	0.0	0.0	-	82.2	82.2	-
Urinary System:	35.2	56.8	19.1	8.7	13.9	5.2	74.0	75.4	70.9
Urinary bladder	21.2	37.3	9.4	4.3	7.5	2.3	79.8	81.2	75.8
Kidney & renal pelvis	13.2	18.3	9.2	4.2	6.0	2.7	66.5	66.0	67.3
Ureter	0.6	0.8	0.4	0.1	0.1	0.1	52.6	55.6	48.3
Other urinary system	0.3	0.4	0.2	0.1	0.1	0.1	57.1	62.2	49.0
Eye & Orbit	0.8	1.0	0.7	0.1	0.1	0.1	83.8	82.7	85.1
Brain & Nervous System: ^e	6.5	7.6	5.5	4.4	5.4	3.6	34.1	32.3	36.4
Brain	6.0	7.2	5.0	-	-	-	31.0	29.7	32.7
Cranial nerves & other nervous system	0.4	0.4	0.4	-	-	-	77.3	74.5	80.0
Endocrine System:	9.7	5.4	14.0	0.8	0.8	0.7	94.2	88.6	96.0
Thyroid	9.1	4.6	13.4	0.5	0.5	0.5	96.9	94.0	97.7
Other endocrine & thymus	0.7	0.8	0.6	0.3	0.3	0.3	61.6	61.5	61.6
Lymphoma:	22.2	26.5	18.8	7.8	9.8	6.3	67.7	65.4	70.4
Hodgkin lymphoma	2.8	3.1	2.5	0.4	0.5	0.4	84.8	83.1	86.8
Non-Hodgkin lymphoma	19.5	23.5	16.3	7.3	9.3	5.9	64.5	62.1	67.4
Myeloma	5.6	7.0	4.6	3.7	4.6	3.0	34.9	36.3	33.4
Leukemia:	12.3	16.0	9.5	7.4	9.9	5.6	51.2	51.4	50.9
Lymphocytic:	6.0	8.1	4.4	2.1	3.0	1.5	72.4	71.8	73.4
Acute lymphocytic	1.6	1.8	1.4	0.5	0.6	0.4	64.7	63.7	66.1
Chronic lymphocytic	4.0	5.6	2.8	1.5	2.2	1.0	75.9	74.5	77.9
Other lymphocytic	0.4	0.7	0.2	0.1	0.2	0.1	81.5	84.2	74.1
Myeloid & Monocytic:	5.5	7.0	4.5	3.5	4.5	2.7	30.3	29.7	31.2
Acute myeloid	3.6	4.5	2.9	2.8	3.6	2.2	21.9	20.7	23.3
Chronic myeloid	1.5	1.9	1.1	0.4	0.6	0.3	50.2	49.5	51.2
Acute monocytic	0.3	0.3	0.3	0.0	0.1	0.0	23.5	22.9	23.6
Other myeloid & monocytic	0.2	0.2	0.1	0.2	0.3	0.1	28.9	28.2	29.2
Other:	0.7	0.9	0.6	1.8	2.4	1.4	20.4	19.9	20.8
Other acute	0.3	0.4	0.3	0.8	1.0	0.6	11.3	9.1	12.8
Aleukemic, subleuk & NOS	0.4	0.5	0.4	1.0	1.4	0.8	29.8	30.4	29.0
Kaposi Sarcoma ^f	0.7	1.3	0.1	-	-	-	57.5	57.0	66.1
Mesothelioma ^f	1.1	2.0	0.4	-	-	-	8.1	6.3	14.0
Ill-defined & unspecified	10.4	11.8	9.3	14.6	18.4	11.9	15.7	18.8	12.8

Note: Incidence and death rates are per 100,000 and are age-adjusted to the 2000 US Std Population (19 age groups - Census P25-1130).

^a SEER 17 areas (San Francisco, Connecticut, Detroit, Hawaii, Iowa, New Mexico, Seattle, Utah, Atlanta, San Jose-Monterey, Los Angeles, Alaska Native Registry, Rural Georgia, California excluding SF/SJM/LA, Kentucky, Louisiana and New Jersey).

^b US Mortality Files, National Center for Health Statistics, Centers for Disease Control and Prevention.

^c SEER 17 areas. California excluding SF/SJM/LA, Kentucky, Louisiana, and New Jersey contribute cases for diagnosis years 2000-2004. The remaining 13 SEER Areas contribute cases for the entire period 1996-2004.

^d Ovary excludes borderline cases or histologies 8442, 8451, 8462, 8472, and 8473.

^e Due to coding changes, Brain & Nervous System mortality are no longer shown separately.

^f Rate not shown for mortality. Category did not exist in mortality coding until 1999.

- Statistic could not be calculated due to less than 16 cases in the time interval.

Table I-5
AGE-ADJUSTED SEER INCIDENCE AND U.S. DEATH RATES AND 5-YEAR RELATIVE SURVIVAL RATES
 By Primary Cancer Site, Sex and Time Period

Site	Whites								
	Incidence ^a (2001-2005)			US Mortality ^b (2001-2005)			Survival ^c (1996-2004)		
	Total	Males	Females	Total	Males	Females	Total	Males	Females
All Sites	475.3	551.4	423.6	188.0	230.7	159.2	66.2	66.0	66.4
Oral Cavity & Pharynx:	10.6	15.7	6.1	2.5	3.8	1.5	61.6	61.0	62.9
Lip	0.9	1.6	0.4	0.0	0.0	0.0	90.6	90.5	90.3
Tongue	2.9	4.3	1.7	0.6	0.9	0.4	60.0	59.8	60.4
Salivary gland	1.2	1.7	0.9	0.2	0.4	0.2	73.6	69.0	79.7
Floor of mouth	0.7	1.0	0.4	0.0	0.1	0.0	53.1	51.7	55.9
Gum & other oral cavity	1.5	1.8	1.3	0.4	0.5	0.3	59.9	57.1	63.2
Nasopharynx	0.4	0.6	0.2	0.2	0.2	0.1	54.4	54.8	53.1
Tonsil	1.6	2.6	0.6	0.2	0.3	0.1	66.1	67.3	61.0
Oropharynx	0.3	0.5	0.2	0.2	0.3	0.1	40.1	40.1	39.9
Hypopharynx	0.7	1.2	0.3	0.1	0.2	0.0	31.0	31.3	29.9
Other oral cavity & pharynx	0.2	0.3	0.1	0.5	0.8	0.2	36.0	36.4	34.7
Digestive System:	86.4	105.7	71.0	43.5	55.8	33.8	46.1	44.3	48.1
Esophagus	4.6	8.0	1.9	4.4	7.8	1.6	16.7	16.5	17.6
Stomach	7.0	10.0	4.7	3.6	5.0	2.5	22.8	21.2	25.5
Small intestine	1.8	2.1	1.5	0.3	0.4	0.3	59.7	59.2	60.3
Colon & Rectum:	50.1	58.9	43.2	18.3	22.1	15.3	65.3	65.4	65.2
Colon	36.2	41.1	32.4	-	-	-	64.9	65.4	64.5
Rectum	13.9	17.8	10.8	-	-	-	66.2	65.5	67.0
Anus, anal canal & anorectum	1.6	1.4	1.8	0.2	0.2	0.2	67.4	61.2	71.6
Liver & Intrahep:	5.4	8.2	2.9	4.6	6.7	2.9	11.4	11.0	12.3
Liver	4.8	7.6	2.5	3.5	5.4	1.9	12.2	11.4	13.9
Intrahep bile duct	0.5	0.6	0.5	1.1	1.3	1.0	6.2	6.2	6.1
Gallbladder	1.1	0.8	1.4	0.6	0.5	0.8	14.6	13.1	15.1
Other biliary	1.7	2.1	1.4	0.5	0.6	0.5	18.7	20.1	17.3
Pancreas	11.4	13.0	10.0	10.4	12.1	9.0	5.0	5.1	4.9
Retroperitoneum	0.4	0.5	0.4	0.1	0.1	0.1	53.9	50.2	57.6
Peritoneum, omentum & mesentery	0.7	0.1	1.2	0.3	0.1	0.4	30.7	37.8	30.2
Other digestive system	0.5	0.6	0.4	0.3	0.3	0.2	8.8	7.8	9.8
Respiratory System:	69.7	86.9	56.9	55.9	74.0	42.7	18.9	18.4	19.5
Nose, nasal cavity & middle ear	0.7	0.8	0.5	0.2	0.2	0.1	55.7	52.8	59.8
Larynx	3.6	6.3	1.4	1.2	2.1	0.5	63.9	65.0	59.8
Lung & bronchus	65.1	79.3	54.9	54.4	71.3	42.0	15.5	13.4	17.9
Pleura ^d	0.0	0.1	0.0	0.1	0.2	0.0	30.0	28.3	27.8
Trachea & other respiratory organs	0.2	0.3	0.1	0.1	0.1	0.1	48.4	48.7	46.9
Bones & joints	1.0	1.1	0.8	0.4	0.6	0.4	68.2	64.4	72.9
Soft tissue (incl heart)	3.2	3.8	2.7	1.3	1.4	1.1	67.4	67.6	67.2
Skin (ex basal & squam):	24.5	31.0	19.9	3.9	5.9	2.4	90.6	88.4	93.2
Melanoma of the skin	22.6	28.5	18.5	3.0	4.4	2.0	90.9	88.8	93.5
Other non-epithelial skin	1.9	2.5	1.4	0.9	1.5	0.5	86.0	83.4	89.3
Breast	70.4	1.2	130.6	13.7	0.3	24.4	89.9	86.8	89.9
Breast (<i>in situ</i>)	16.0	0.1	30.3	-	-	-	100.0	100.0	100.0

Note: Incidence and death rates are per 100,000 and are age-adjusted to the 2000 US Std Population (19 age groups - Census P25-1130).

^a SEER 17 areas (San Francisco, Connecticut, Detroit, Hawaii, Iowa, New Mexico, Seattle, Utah, Atlanta, San Jose-Monterey, Los Angeles, Alaska Native Registry, Rural Georgia, California excluding SF/SJM/LA, Kentucky, Louisiana and New Jersey).

^b US Mortality Files, National Center for Health Statistics, Centers for Disease Control and Prevention.

^c SEER 17 areas. California excluding SF/SJM/LA, Kentucky, Louisiana, and New Jersey contribute cases for diagnosis years 2000-2004. The remaining 13 SEER Areas contribute cases for the entire period 1996-2004.

^d Mesotheliomas of the Pleura are included in the separate group Mesothelioma for incidence but are included in the Pleura grouping for mortality.

- Statistic could not be calculated due to less than 16 cases in the time interval.

Table I-5 - continued
AGE-ADJUSTED SEER INCIDENCE AND U.S. DEATH RATES AND 5-YEAR RELATIVE SURVIVAL RATES
 By Primary Cancer Site, Sex and Time Period

Site	Whites								
	Incidence ^a (2001-2005)			US Mortality ^b (2001-2005)			Survival ^c (1996-2004)		
	Total	Males	Females	Total	Males	Females	Total	Males	Females
Female Genital System:	26.9	-	50.3	9.0	-	16.2	70.8	-	70.8
Cervix uteri	4.2	-	8.2	1.2	-	2.3	72.5	-	72.5
Corpus uteri	12.8	-	23.8	1.0	-	1.9	85.6	-	85.6
Uterus, NOS	0.3	-	0.5	1.2	-	2.0	30.9	-	30.9
Ovary ^d	7.6	-	14.1	5.1	-	9.2	45.3	-	45.3
Vagina	0.4	-	0.7	0.1	-	0.2	52.7	-	52.7
Vulva	1.3	-	2.3	0.3	-	0.5	77.1	-	77.1
Other female genital system	0.4	-	0.7	0.1	-	0.2	63.2	-	63.2
Male Genital System:	73.5	164.1	-	9.6	25.1	-	99.1	99.1	-
Prostate	69.8	156.7	-	9.3	24.6	-	99.5	99.5	-
Testis	3.2	6.3	-	0.1	0.3	-	95.8	95.8	-
Penis	0.4	0.8	-	0.1	0.2	-	67.9	67.9	-
Other male genital system	0.1	0.2	-	0.0	0.0	-	85.2	85.2	-
Urinary System:	37.5	60.6	20.1	9.0	14.3	5.2	74.7	76.0	71.7
Urinary bladder	23.0	40.6	10.0	4.5	7.9	2.2	80.5	81.6	77.1
Kidney & renal pelvis	13.7	18.8	9.5	4.3	6.2	2.8	66.5	66.1	67.2
Ureter	0.6	0.9	0.4	0.1	0.2	0.1	53.5	56.0	49.6
Other urinary system	0.3	0.4	0.1	0.1	0.1	0.1	56.7	60.2	50.0
Eye & Orbit	0.9	1.1	0.8	0.1	0.1	0.1	83.4	82.4	84.5
Brain & Nervous System: ^e	7.1	8.4	6.0	4.7	5.7	3.9	33.4	31.8	35.4
Brain	6.6	7.9	5.5	-	-	-	30.3	29.1	31.9
Cranial nerves & other nervous system	0.4	0.4	0.5	-	-	-	78.5	76.7	80.4
Endocrine System:	10.2	5.7	14.7	0.8	0.8	0.7	94.5	89.2	96.4
Thyroid	9.5	4.9	14.1	0.5	0.5	0.5	97.1	94.3	98.0
Other endocrine & thymus	0.7	0.8	0.6	0.3	0.3	0.3	61.1	61.5	60.5
Lymphoma:	23.3	27.6	19.7	8.1	10.2	6.5	68.4	66.2	71.0
Hodgkin lymphoma	3.0	3.3	2.7	0.5	0.6	0.4	85.2	83.7	87.0
Non-Hodgkin lymphoma	20.3	24.3	17.1	7.6	9.7	6.2	65.3	62.9	68.0
Myeloma	5.2	6.6	4.1	3.4	4.3	2.8	34.7	36.3	32.9
Leukemia:	12.9	16.7	9.9	7.6	10.2	5.7	51.7	51.9	51.5
Lymphocytic:	6.5	8.6	4.7	2.2	3.1	1.5	73.0	72.5	73.7
Acute lymphocytic	1.7	2.0	1.5	0.5	0.6	0.4	65.2	64.3	66.3
Chronic lymphocytic	4.3	6.0	3.0	1.5	2.3	1.0	76.3	75.1	78.1
Other lymphocytic	0.4	0.7	0.2	0.1	0.2	0.1	82.0	84.9	74.4
Myeloid & Monocytic:	5.7	7.1	4.6	3.6	4.7	2.8	29.5	28.4	30.9
Acute myeloid	3.7	4.6	3.0	2.9	3.7	2.3	21.2	20.0	22.7
Chronic myeloid	1.5	2.0	1.2	0.4	0.6	0.3	49.3	47.7	51.4
Acute monocytic	0.3	0.4	0.3	0.0	0.1	0.0	24.0	22.4	25.4
Other myeloid & monocytic	0.2	0.2	0.1	0.2	0.3	0.2	28.5	26.9	30.3
Other:	0.7	0.9	0.6	1.8	2.4	1.4	20.5	19.9	20.7
Other acute	0.3	0.4	0.3	0.8	1.1	0.6	10.7	7.9	12.6
Aleukemic, subleuk & NOS	0.4	0.5	0.3	1.0	1.4	0.8	30.7	31.8	28.9
Kaposi Sarcoma ^f	0.6	1.1	0.1	-	-	-	60.6	59.4	79.1
Mesothelioma ^f	1.2	2.2	0.5	-	-	-	7.7	5.9	13.5
Ill-defined & unspecified	10.5	11.9	9.4	14.5	18.2	11.8	16.3	20.0	12.9

Note: Incidence and death rates are per 100,000 and are age-adjusted to the 2000 US Std Population (19 age groups - Census P25-1130).

^a SEER 17 areas (San Francisco, Connecticut, Detroit, Hawaii, Iowa, New Mexico, Seattle, Utah, Atlanta, San Jose-Monterey, Los Angeles, Alaska Native Registry, Rural Georgia, California excluding SF/SJM/LA, Kentucky, Louisiana and New Jersey).

^b US Mortality Files, National Center for Health Statistics, Centers for Disease Control and Prevention.

^c SEER 17 areas. California excluding SF/SJM/LA, Kentucky, Louisiana, and New Jersey contribute cases for diagnosis years 2000-2004. The remaining 13 SEER Areas contribute cases for the entire period 1996-2004.

^d Ovary excludes borderline cases or histologies 8442, 8451, 8462, 8472, and 8473.

^e Due to coding changes, Brain & Nervous System mortality are no longer shown separately.

^f Rate not shown for mortality. Category did not exist in mortality coding until 1999.

- Statistic could not be calculated due to less than 16 cases in the time interval.

Table I-6
AGE-ADJUSTED SEER INCIDENCE AND U.S. DEATH RATES AND 5-YEAR RELATIVE SURVIVAL RATES
 By Primary Cancer Site, Sex and Time Period

Blacks

Site	Incidence ^a (2001-2005)			US Mortality ^b (2001-2005)			Survival ^c (1996-2004)		
	Total	Males	Females	Total	Males	Females	Total	Males	Females
All Sites	500.6	651.5	398.9	234.0	313.0	186.7	56.8	59.1	54.1
Oral Cavity & Pharynx:	10.8	17.2	5.9	3.7	6.7	1.6	40.7	36.1	52.1
Lip	0.1	0.2	-	-	-	-	88.5	93.6	82.6
Tongue	2.4	4.0	1.2	0.7	1.3	0.3	35.1	33.3	39.4
Salivary gland	1.1	1.2	1.0	0.2	0.2	0.1	71.7	64.6	77.4
Floor of mouth	0.8	1.3	0.4	0.1	0.1	0.0	37.8	32.1	55.7
Gum & other oral cavity	1.7	2.4	1.3	0.5	0.8	0.3	53.9	47.2	64.1
Nasopharynx	0.7	1.2	0.4	0.3	0.5	0.2	47.6	46.3	49.4
Tonsil	1.7	3.0	0.6	0.3	0.6	0.1	38.7	36.8	45.6
Oropharynx	0.6	1.0	0.3	0.4	0.7	0.2	21.5	22.5	18.3
Hypopharynx	1.2	2.3	0.4	0.2	0.4	0.0	19.4	18.3	24.2
Other oral cavity & pharynx	0.4	0.7	0.2	1.1	2.0	0.4	18.7	17.0	23.4
Digestive System:	111.8	137.4	93.6	62.6	81.5	49.6	37.5	34.6	40.5
Esophagus	5.9	9.9	3.0	5.7	9.8	2.8	10.3	9.2	12.9
Stomach	12.4	17.4	8.9	7.8	11.5	5.5	24.1	21.6	27.2
Small intestine	3.2	3.8	2.7	0.6	0.7	0.5	51.2	48.2	53.7
Colon & Rectum:	61.2	71.2	54.5	26.1	31.8	22.4	55.1	54.7	55.5
Colon	47.0	53.7	42.7	-	-	-	54.5	54.8	54.3
Rectum	14.2	17.5	11.8	-	-	-	57.0	54.5	59.7
Anus, anal canal & anorectum	1.6	1.7	1.5	0.2	0.2	0.2	59.6	54.9	64.5
Liver & Intrahep:	8.0	13.2	4.0	6.7	10.3	3.9	7.9	7.9	7.7
Liver	7.5	12.7	3.6	5.6	9.1	3.0	8.0	8.1	7.3
Intrahep bile duct	0.5	0.5	0.5	1.0	1.2	0.9	5.7	3.1	8.2
Gallbladder	1.4	1.0	1.6	0.8	0.6	1.0	13.5	17.6	12.2
Other biliary	1.6	1.9	1.4	0.4	0.5	0.4	12.1	9.8	13.8
Pancreas	15.2	16.2	14.3	13.7	15.4	12.4	4.6	3.6	5.4
Retroperitoneum	0.4	0.3	0.4	0.1	0.1	0.1	40.3	47.4	34.5
Peritoneum, omentum & mesentery	0.3	0.1	0.5	0.2	0.1	0.2	30.6	-	25.7
Other digestive system	0.6	0.7	0.6	0.4	0.5	0.3	10.7	0.0	10.8
Respiratory System:	82.6	119.8	57.2	63.7	98.4	40.9	15.8	15.3	16.4
Nose, nasal cavity & middle ear	0.7	0.9	0.5	0.2	0.3	0.1	45.1	40.3	51.9
Larynx	5.8	10.9	2.0	2.4	4.8	0.8	51.4	53.5	44.3
Lung & bronchus	76.0	107.6	54.6	60.9	93.1	39.9	12.1	10.4	14.5
Pleura ^d	-	-	-	0.0	0.1	0.0	-	-	-
Trachea & other respiratory organs	0.2	0.2	0.1	0.1	0.1	0.1	33.6	27.6	42.6
Bones & joints	0.8	0.8	0.7	0.5	0.6	0.4	63.6	62.5	64.5
Soft tissue (incl heart)	3.2	3.7	2.9	1.4	1.5	1.4	60.0	59.2	60.6
Skin (ex basal & squam):	2.1	2.3	2.0	1.0	1.4	0.6	87.9	84.8	90.6
Melanoma of the skin	1.0	1.1	0.9	0.4	0.5	0.4	76.7	71.2	81.0
Other non-epithelial skin	1.1	1.2	1.1	0.5	0.9	0.2	95.1	93.2	96.5
Breast	67.4	1.6	117.5	19.9	0.5	33.5	77.1	74.2	77.1
Breast (<i>in situ</i>)	14.8	0.2	26.1	-	-	-	100.0	95.8	100.0

Note: Incidence and death rates are per 100,000 and are age-adjusted to the 2000 US Std Population (19 age groups - Census P25-1130).

^a SEER 17 areas (San Francisco, Connecticut, Detroit, Hawaii, Iowa, New Mexico, Seattle, Utah, Atlanta, San Jose-Monterey, Los Angeles, Alaska Native Registry, Rural Georgia, California excluding SF/SJM/LA, Kentucky, Louisiana and New Jersey).

^b US Mortality Files, National Center for Health Statistics, Centers for Disease Control and Prevention.

^c SEER 17 areas. California excluding SF/SJM/LA, Kentucky, Louisiana, and New Jersey contribute cases for diagnosis years 2000-2004. The remaining 13 SEER Areas contribute cases for the entire period 1996-2004.

^d Mesotheliomas of the Pleura are included in the separate group Mesothelioma for incidence but are included in the Pleura grouping for mortality.

- Statistic could not be calculated due to less than 16 cases in the time interval.

Table I-6 - continued
AGE-ADJUSTED SEER INCIDENCE AND U.S. DEATH RATES AND 5-YEAR RELATIVE SURVIVAL RATES
 By Primary Cancer Site, Sex and Time Period

Blacks

Site	Incidence ^a (2001-2005)			US Mortality ^b (2001-2005)			Survival ^c (1996-2004)		
	Total	Males	Females	Total	Males	Females	Total	Males	Females
Female Genital System:	25.6	-	44.8	12.0	-	20.1	56.8	-	56.8
Cervix uteri	6.0	-	10.8	2.7	-	4.7	61.8	-	61.8
Corpus uteri	11.0	-	19.2	1.9	-	3.1	62.7	-	62.7
Uterus, NOS	0.6	-	1.1	2.4	-	4.0	27.1	-	27.1
Ovary ^d	5.8	-	10.1	4.5	-	7.5	38.4	-	38.4
Vagina	0.6	-	1.0	0.2	-	0.3	43.6	-	43.6
Vulva	1.1	-	1.9	0.2	-	0.3	72.3	-	72.3
Other female genital system	0.4	-	0.7	0.1	-	0.2	70.0	-	70.0
Male Genital System:	104.0	251.1	-	21.1	59.8	-	95.2	95.2	-
Prostate	102.9	248.5	-	20.9	59.4	-	95.4	95.4	-
Testis	0.7	1.4	-	0.1	0.2	-	88.1	88.1	-
Penis	0.4	1.0	-	0.1	0.2	-	69.6	69.6	-
Other male genital system	0.1	0.2	-	0.0	0.0	-	70.0	70.0	-
Urinary System:	28.3	42.6	18.4	8.0	11.6	5.7	64.4	65.8	61.9
Urinary bladder	12.8	20.4	7.7	3.7	5.4	2.8	64.9	69.3	56.3
Kidney & renal pelvis	14.8	21.3	10.1	4.1	6.1	2.7	65.0	63.6	66.3
Ureter	0.3	0.4	0.2	0.0	0.0	0.1	38.1	41.7	37.6
Other urinary system	0.4	0.5	0.4	0.2	0.1	0.2	45.8	56.7	36.3
Eye & Orbit	0.2	0.3	0.2	0.0	0.0	0.0	81.9	76.8	88.0
Brain & Nervous System: ^e	4.1	4.7	3.6	2.6	3.2	2.1	36.9	32.8	41.4
Brain	3.6	4.3	3.1	-	-	-	33.3	30.4	36.6
Cranial nerves & other nervous system	0.4	0.4	0.4	-	-	-	66.7	57.8	72.2
Endocrine System:	6.3	3.5	8.7	0.8	0.7	0.9	90.4	81.8	92.8
Thyroid	5.5	2.7	8.0	0.5	0.4	0.5	94.8	90.7	95.6
Other endocrine & thymus	0.7	0.8	0.7	0.3	0.4	0.3	59.9	59.9	59.6
Lymphoma:	17.4	21.3	14.4	5.5	7.0	4.5	61.0	57.0	66.1
Hodgkin lymphoma	2.5	2.9	2.3	0.4	0.5	0.3	81.5	77.4	86.0
Non-Hodgkin lymphoma	14.9	18.4	12.1	5.1	6.4	4.2	56.0	52.1	60.9
Myeloma	11.6	14.4	9.8	6.9	8.3	6.0	34.2	35.0	33.5
Leukemia:	10.1	13.0	8.0	6.5	8.5	5.2	43.2	42.8	43.6
Lymphocytic:	4.2	5.8	3.1	1.9	2.7	1.3	60.7	55.7	66.9
Acute lymphocytic	0.9	0.9	0.8	0.4	0.4	0.3	58.0	52.5	64.6
Chronic lymphocytic	3.1	4.4	2.2	1.4	2.1	1.0	62.1	56.3	69.6
Other lymphocytic	0.3	0.4	0.2	0.1	0.2	0.1	62.7	63.7	59.9
Myeloid & Monocytic:	4.9	6.2	4.0	2.9	3.6	2.4	32.2	34.2	29.1
Acute myeloid	3.1	3.8	2.6	2.2	2.6	1.8	24.2	26.2	21.0
Chronic myeloid	1.5	2.0	1.1	0.5	0.7	0.4	48.9	48.4	48.7
Acute monocytic	0.2	0.2	0.2	0.0	-	-	13.2	16.6	8.0
Other myeloid & monocytic	0.2	0.2	0.2	0.2	0.2	0.1	33.1	37.7	26.4
Other:	0.9	1.1	0.8	1.8	2.3	1.5	17.4	15.1	19.1
Other acute	0.4	0.4	0.3	0.6	0.8	0.5	15.2	14.4	14.8
Aleukemic, subleuk & NOS	0.6	0.7	0.5	1.2	1.5	1.0	18.4	14.0	21.5
Kaposi Sarcoma ^f	1.3	2.6	0.2	-	-	-	43.9	44.7	31.5
Mesothelioma ^f	0.6	1.2	0.2	-	-	-	14.7	10.7	22.3
Ill-defined & unspecified	12.3	14.2	10.8	17.8	23.4	14.1	10.1	10.4	9.8

Note: Incidence and death rates are per 100,000 and are age-adjusted to the 2000 US Std Population (19 age groups - Census P25-1130).

^a SEER 17 areas (San Francisco, Connecticut, Detroit, Hawaii, Iowa, New Mexico, Seattle, Utah, Atlanta, San Jose-Monterey, Los Angeles, Alaska Native Registry, Rural Georgia, California excluding SF/SJM/LA, Kentucky, Louisiana and New Jersey).

^b US Mortality Files, National Center for Health Statistics, Centers for Disease Control and Prevention.

^c SEER 17 areas. California excluding SF/SJM/LA, Kentucky, Louisiana, and New Jersey contribute cases for diagnosis years 2000-2004. The remaining 13 SEER Areas contribute cases for the entire period 1996-2004.

^d Ovary excludes borderline cases or histologies 8442, 8451, 8462, 8472, and 8473.

^e Due to coding changes, Brain & Nervous System mortality are no longer shown separately.

^f Rate not shown for mortality. Category did not exist in mortality coding until 1999.

- Statistic could not be calculated due to less than 16 cases in the time interval.

SEER Incidence^a and US Death Rates^b, 2001-2005 5-Year Relative Survival Rates^c, 1996-2004 All Cancer Combined, by Race and Sex

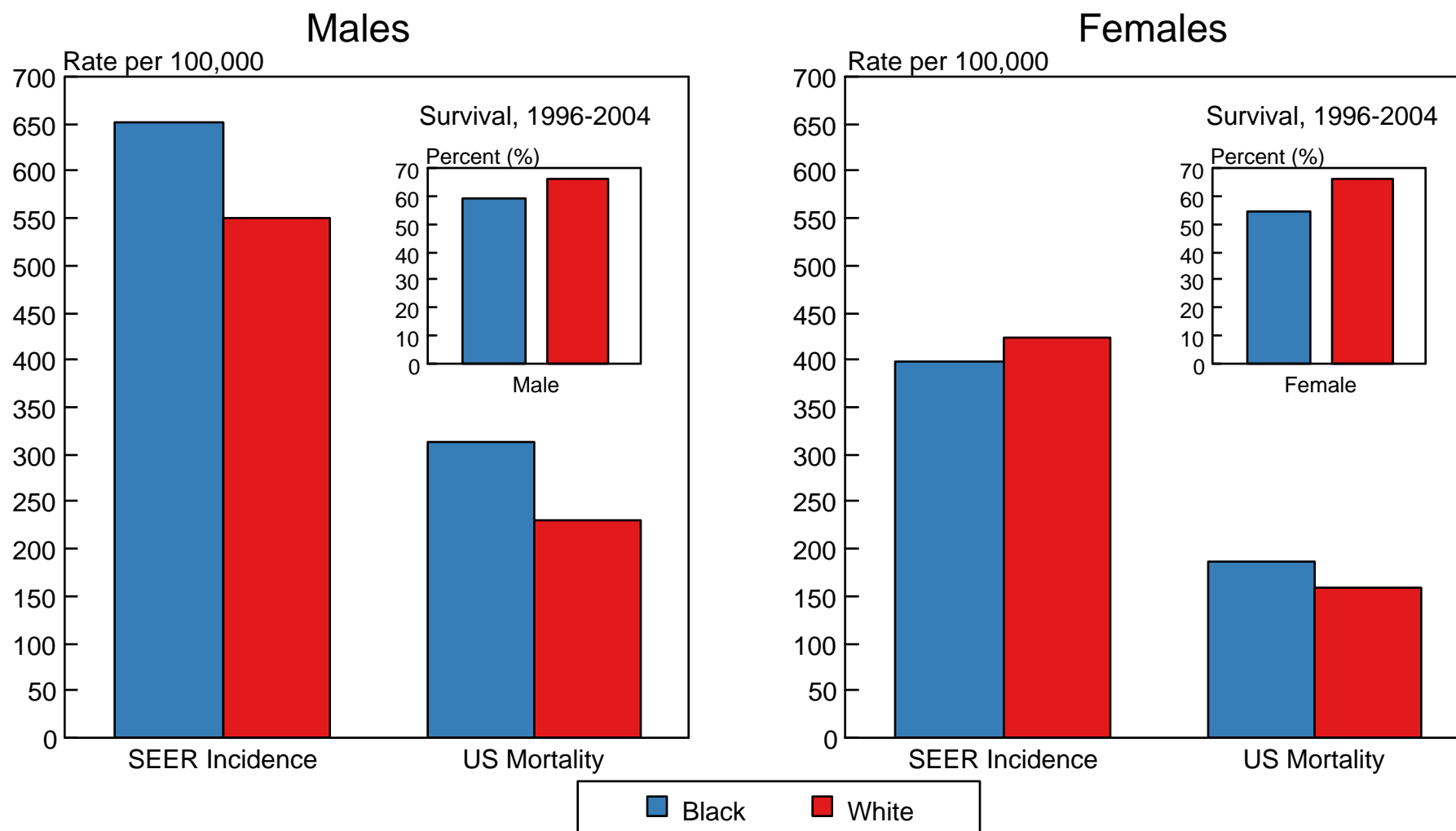


Figure 1-9

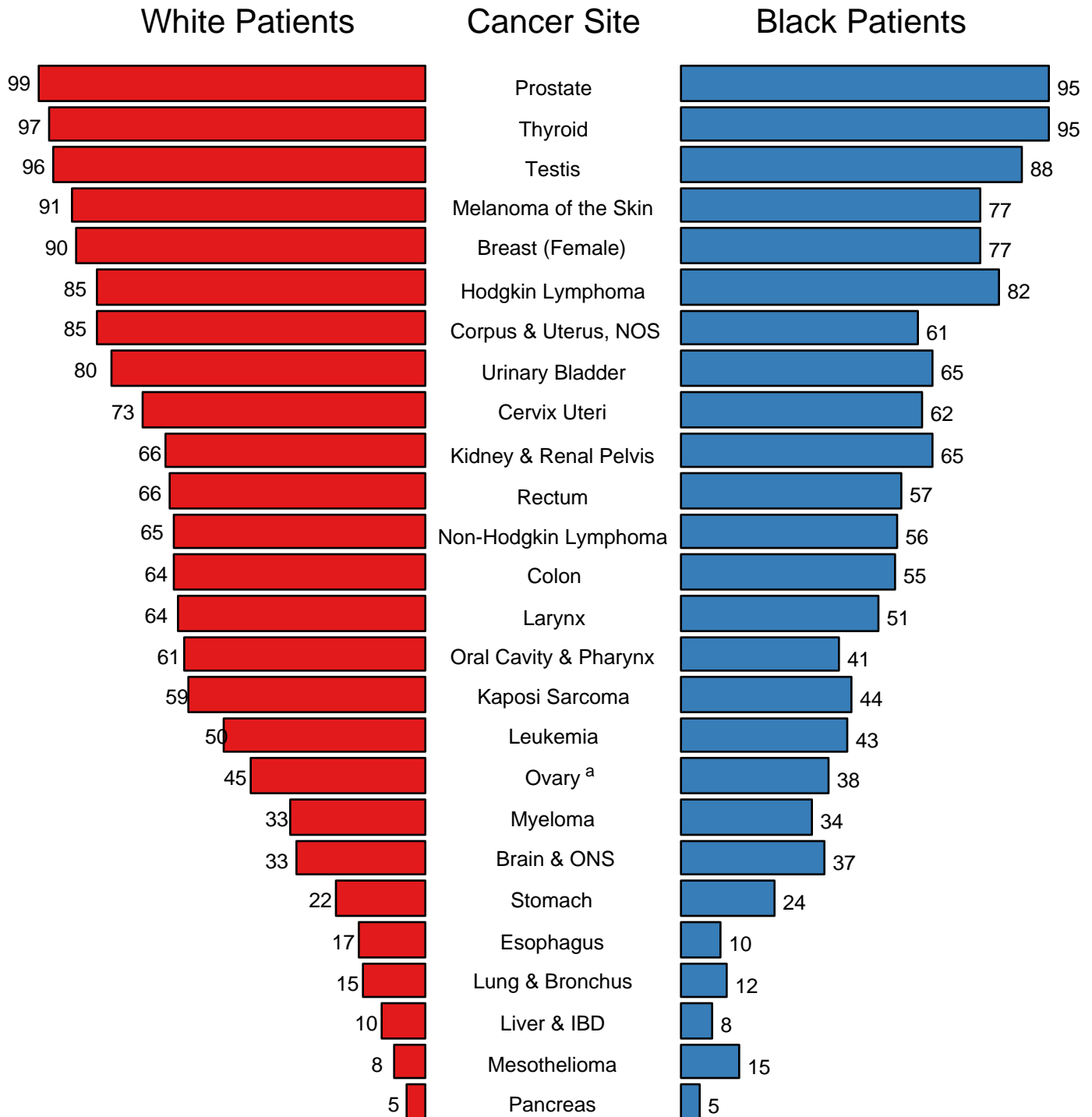
a Incidence rates are from the SEER 17 areas (San Francisco, Connecticut, Detroit, Hawaii, Iowa, New Mexico, Seattle, Utah, Atlanta, San Jose-Monterey, Los Angeles, Alaska Native Registry, Rural Georgia, California excluding SF/SJM/LA, Kentucky, Louisiana, and New Jersey) and are age-adjusted to the 2000 US Std Population (19 age groups - Census P25-1103).

b Death rates are from the US Mortality Files, National Center for Health Statistics, Centers for Disease Control and Prevention and are age-adjusted to the 2000 US Std

c Population (19 age groups - Census P25-1103).

Survival rates are from the SEER 17 areas (San Francisco, Connecticut, Detroit, Hawaii, Iowa, New Mexico, Seattle, Utah, Atlanta, San Jose-Monterey, Los Angeles, Alaska Native Registry, Rural Georgia, California excluding SF/SJM/LA, Kentucky, Louisiana, and New Jersey). California excluding SF/SJM/LA, Kentucky, Louisiana, and New Jersey contribute cases for diagnosis years 2000-2004. The remaining 13 SEER Areas contribute cases for the entire period 1996-2004. Relative survival rates are expressed as percents.

5-Year Relative Survival Rates SEER Program, 1996-2004 Both Sexes, by Race



Source: SEER 17 areas (San Francisco, Connecticut, Detroit, Hawaii, Iowa, New Mexico, Seattle, Utah, Atlanta, San Jose-Monterey, Los Angeles, Alaska Native Registry, Rural Georgia, California excluding SF/SJM/LA, Kentucky, Louisiana, and New Jersey). California excluding SF/SJM/LA, Kentucky, Louisiana, and New Jersey contribute cases for diagnosis years 2000-2004. The remaining 13 SEER Areas contribute cases for the entire period 1996-2004.

^a Ovary excludes borderline cases or histologies 8442, 8451, 8462, 8472, and 8473.

Table II-5
ALL CANCER SITES (Invasive)

	All Races			Whites			Blacks		
	Total	Males	Females	Total	Males	Females	Total	Males	Females
<u>5-YR RELATIVE SURVIVAL RATES</u>									
YEAR OF DIAGNOSIS:									
1960-1963 ^a	-	-	-	39	-	-	27	-	-
1970-1973 ^a	-	-	-	43	-	-	31	-	-
1975-1977 ^b	50.1	42.3	57.1	51.0	43.3	57.8	39.8	32.7	47.2
1978-1980 ^b	50.4	44.0	56.4	51.4	45.3	57.1	39.6	33.3	46.6
1981-1983 ^b	51.6	46.1	56.7	52.8	47.6	57.6	39.6	34.2	45.6
1984-1986 ^b	53.5	47.7	58.9	54.7	49.1	59.9	40.8	35.5	46.4
1987-1989 ^b	56.4	51.6	61.0	57.8	53.3	62.1	43.7	38.8	48.9
1990-1992 ^b	60.9	59.5	62.3	62.4	61.3	63.5	48.2	47.3	49.3
1993-1995 ^b	62.2	61.1	63.4	63.4	62.4	64.5	52.9	53.6	51.9
1996-2004 ^b	66.3 ^e	66.0 ^e	66.6 ^e	67.5 ^e	67.2 ^e	67.7 ^e	57.5 ^e	59.8 ^e	54.9 ^e
<u>5-YR PERIOD SURVIVAL RATES^{cd}</u>									
YEAR OF DIAGNOSIS:									
1996-2004	66.2	66.4	66.0	67.0	67.1	66.9	58.1	60.7	55.2
<u>5-YR RELATIVE SURVIVAL RATES, 1996-2004^c</u>									
AGE AT DIAGNOSIS:									
<45	77.6	71.9	81.4	79.6	74.4	83.1	63.3	54.8	68.7
45-54	70.5	63.8	75.8	72.3	65.6	77.5	58.0	54.8	61.2
55-64	67.5	67.3	67.8	68.7	68.3	69.2	59.4	63.0	53.8
65-74	63.4	66.8	58.8	64.1	67.2	60.0	56.7	63.8	46.4
75+	53.2	57.4	49.4	53.9	57.7	50.5	44.3	51.0	38.3
Under 65	71.0	67.3	74.4	72.4	68.8	75.8	59.9	59.0	60.9
65 and over	59.1	63.2	54.3	59.7	63.6	55.4	52.1	59.7	42.9

^a Rates are based on End Results data from a series of hospital registries and one population-based registry.

^b Rates are from the SEER 9 areas (San Francisco, Connecticut, Detroit, Hawaii, Iowa, New Mexico, Seattle, Utah, Atlanta).

Rates are based on follow-up of patients into 2005.

^c Rates are from the SEER 17 areas (San Francisco, Connecticut, Detroit, Hawaii, Iowa, New Mexico, Seattle, Utah, Atlanta, San Jose-Monterey, Los Angeles, Alaska Native Registry, Rural Georgia, California excluding SF/SJM/LA, Kentucky, Louisiana and New Jersey). California excluding SF/SJM/LA, Kentucky, Louisiana, and New Jersey contribute cases for diagnosis years 2000-2004. The remaining 13 SEER Areas contribute cases for the entire period 1996-2004. Rates are based on follow-up of patients into 2005.

^d Period survival provides a more up-to-date estimate of survival by piecing together the most recent conditional survival estimates from several cohorts. It is computed here using three calendar year blocks (2002-2004: 0-1 year survival), (2001-2003: 1-2 year survival), (2000-2002: 2-3 year survival), (1999-2001: 3-4 year survival), (1998-2000: 4-5 years survival).

^e The difference in rates between 1975-1977 and 1996-2004 is statistically significant ($p < .05$).

^f The standard error of the survival rate is between 5 and 10 percentage points.

^g The standard error of the survival rate is greater than 10 percentage points.

- Statistic could not be calculated due to fewer than 16 cases during the time period.

Table III-5
BRAIN AND OTHER NERVOUS SYSTEM CANCER (Invasive)
SURVIVAL RATES, BY RACE, SEX, DIAGNOSIS YEAR, STAGE AND AGE

	All Races			Whites			Blacks		
	Total	Males	Females	Total	Males	Females	Total	Males	Females
<u>5-YR RELATIVE SURVIVAL RATES</u>									
YEAR OF DIAGNOSIS:									
1960-1963 ^a	-	-	-	18	16	21	19	17	21
1970-1973 ^a	-	-	-	20	18	22	19	19	19
1975-1977 ^b	23.7	22.1	25.7	23.1	21.6	25.0	26.6	20.6	35.9 ^f
1978-1980 ^b	25.1	23.9	26.5	24.6	23.5	25.9	29.1	29.5	28.4 ^f
1981-1983 ^b	25.4	24.5	26.6	24.7	24.0	25.5	32.5	33.4	30.6 ^f
1984-1986 ^b	28.7	27.6	30.1	28.0	26.8	29.5	32.6	34.3	30.4
1987-1989 ^b	30.8	29.2	32.7	30.1	28.2	32.5	32.5	34.1	30.4
1990-1992 ^b	32.2	32.8	31.5	31.3	31.8	30.7	40.9	43.1	38.2
1993-1995 ^b	34.0	34.7	33.1	32.9	33.3	32.4	42.1	46.3	37.4
1996-2004 ^b	34.5 ^e	32.9 ^e	36.6 ^e	33.7 ^e	32.3 ^e	35.5 ^e	38.9 ^e	35.0 ^e	43.2
<u>5-YR PERIOD SURVIVAL RATES^{cd}</u>									
YEAR OF DIAGNOSIS:									
1996-2004	35.5	33.3	38.1	34.7	32.7	37.1	39.6	33.6	46.1
<u>5-YR RELATIVE SURVIVAL RATES, 1996-2004^c</u>									
AGE AT DIAGNOSIS:									
<45	63.2	60.3	67.0	63.9	61.3	67.3	55.9	49.5	63.4
45-54	28.4	25.5	32.7	28.1	24.8	33.0	29.2	26.9	31.9
55-64	13.0	10.7	16.3	12.7	10.8	15.5	14.0	6.7	20.7
65-74	7.4	5.5	9.4	7.2	5.2	9.4	8.5	6.8	9.6
75+	4.0	3.3	4.6	3.9	3.4	4.4	5.3	-	7.0
Under 65	44.1	40.7	48.6	43.6	40.5	48.0	43.0	37.4	49.7
65 and over	5.9	4.7	7.1	5.8	4.5	7.0	7.3	5.2	8.6

- ^a Rates are based on End Results data from a series of hospital registries and one population-based registry.
- ^b Rates are from the SEER 9 areas (San Francisco, Connecticut, Detroit, Hawaii, Iowa, New Mexico, Seattle, Utah, Atlanta).
- ^c Rates are based on follow-up of patients into 2005.
- ^d Rates are from the SEER 17 areas (San Francisco, Connecticut, Detroit, Hawaii, Iowa, New Mexico, Seattle, Utah, Atlanta, San Jose-Monterey, Los Angeles, Alaska Native Registry, Rural Georgia, California excluding SF/SJM/LA, Kentucky, Louisiana and New Jersey). California excluding SF/SJM/LA, Kentucky, Louisiana, and New Jersey contribute cases for diagnosis years 2000-2004. The remaining 13 SEER Areas contribute cases for the entire period 1996-2004. Rates are based on follow-up of patients into 2005.
- ^e Period survival provides a more up-to-date estimate of survival by piecing together the most recent conditional survival estimates from several cohorts. It is computed here using three calendar year blocks (2002-2004: 0-1 year survival), (2001-2003: 1-2 year survival), (2000-2002: 2-3 year survival), (1999-2001: 3-4 year survival), (1998-2000: 4-5 years survival).
- ^f The difference in rates between 1975-1977 and 1996-2004 is statistically significant ($p < .05$).
- ^g The standard error of the survival rate is between 5 and 10 percentage points.
- The standard error of the survival rate is greater than 10 percentage points.
- Statistic could not be calculated due to fewer than 16 cases during the time period.

Table IV-10
FEMALE BREAST CANCER (Invasive)

	All Races, Females			White Females			Black Females		
	All	<50	50+	All	<50	50+	All	<50	50+
<u>5-YR RELATIVE SURVIVAL RATES</u>									
YEAR OF DIAGNOSIS:									
1960-1963 ^a	-	-	-	63	-	-	46	-	-
1970-1973 ^a	-	-	-	68	-	-	51	-	-
1975-1977 ^b	75.1	76.7	74.6	75.9	77.9	75.2	62.3	62.6	62.2
1978-1980 ^b	74.9	75.6	74.7	75.6	76.2	75.4	63.9	67.1	62.0
1981-1983 ^b	76.7	77.5	76.5	77.7	78.7	77.4	64.1	65.3	63.4
1984-1986 ^b	79.3	77.9	79.8	80.4	79.7	80.7	65.2	64.0	65.9
1987-1989 ^b	84.2	81.5	85.2	85.3	82.9	86.2	71.3	69.6	72.2
1990-1992 ^b	85.5	83.4	86.3	86.7	85.1	87.3	71.8	70.3	72.8
1993-1995 ^b	86.6	84.3	87.5	88.0	86.3	88.6	72.8	70.0	74.5
1996-2004 ^b	89.3 ^e	87.6 ^e	90.0 ^e	90.5 ^e	89.3 ^e	91.0 ^e	77.8 ^e	75.8 ^e	79.1 ^e
<u>5-YR PERIOD SURVIVAL RATES^{cd}</u>									
YEAR OF DIAGNOSIS:									
1996-2004	89.3	87.4	89.9	90.4	88.9	91.0	77.7	76.6	78.5
<u>STAGE DISTRIBUTION (%) 1996-2004^c</u>									
All Stages									
Number of cases	295,133	73,948	221,185	245,831	57,329	188,502	26,263	8,732	17,531
Percent	100%	100%	100%	100%	100%	100%	100%	100%	100%
Localized	61	54	63	62	54	64	51	46	53
Regional	31	39	28	31	39	28	37	43	33
Distant	6	5	6	6	5	6	10	9	10
Unstaged	2	2	2	2	1	2	3	2	3
<u>5-YR RELATIVE SURVIVAL RATES, 1996-2004^c</u>									
AGE AT DIAGNOSIS:									
<45	85.2	-	-	86.9	-	-	73.3	-	-
45-54	89.0	-	-	90.4	-	-	77.7	-	-
55-64	89.8	-	-	90.9	-	-	78.2	-	-
65-74	90.4	-	-	91.2	-	-	79.8	-	-
75+	88.5	-	-	89.2	-	-	77.5	-	-
Under 65	88.4	-	-	89.8	-	-	76.5	-	-
65 and over	89.6	-	-	90.4	-	-	78.9	-	-
STAGE:									
All Stages	88.7	86.9	89.4	89.9	88.4	90.4	77.1	75.2	78.2
Localized	98.1	95.5	98.9	98.6	96.1	99.4	93.1	90.4	94.5
Regional	83.8	83.1	84.2	85.2	84.9	85.4	72.3	71.5	72.9
Distant	27.1	33.9	24.8	28.8	38.0	26.0	17.1	18.5	16.4
Unstaged	56.9	70.7	52.6	57.7	73.9	53.2	45.8	51.2	43.2
<i>IN SITU</i> ^h	100.0	100.0	100.0	100.0	100.0	100.0	100.0	99.3	100.0

^a Rates are based on End Results data from a series of hospital registries and one population-based registry.

^b Rates are from the SEER 9 areas (San Francisco, Connecticut, Detroit, Hawaii, Iowa, New Mexico, Seattle, Utah, Atlanta). Rates are based on follow-up of patients into 2005.

^c Rates are from the SEER 17 areas (San Francisco, Connecticut, Detroit, Hawaii, Iowa, New Mexico, Seattle, Utah, Atlanta, San Jose-Monterey, Los Angeles, Alaska Native Registry, Rural Georgia, California excluding SF/SJM/LA, Kentucky, Louisiana and New Jersey). California excluding SF/SJM/LA, Kentucky, Louisiana, and New Jersey contribute cases for diagnosis years 2000-2004. The remaining 13 SEER Areas contribute cases for the entire period 1996-2004. Rates are based on follow-up of patients into 2005.

^d Period survival provides a more up-to-date estimate of survival by piecing together the most recent conditional survival estimates from several cohorts. It is computed here using three calendar year blocks (2002-2004: 0-1 year survival), (2001-2003: 1-2 year survival), (2000-2002: 2-3 year survival), (1999-2001: 3-4 year survival), (1998-2000: 4-5 years survival).

^e The difference in rates between 1975-1977 and 1996-2004 is statistically significant (p<.05).

^f The standard error of the survival rate is between 5 and 10 percentage points.

^g The standard error of the survival rate is greater than 10 percentage points.

^h *In situ* cases are not included in the All Stages group.

- Statistic could not be calculated due to fewer than 16 cases during the time period.

Table V-5
CERVIX UTERI CANCER (Invasive)

SURVIVAL RATES, BY RACE, DIAGNOSIS YEAR, STAGE AND AGE

	All Races, Females			White Females			Black Females		
	All	<50	50+	All	<50	50+	All	<50	50+
<u>5-YR RELATIVE SURVIVAL RATES</u>									
YEAR OF DIAGNOSIS:									
1960-1963 ^a	-	-	-	58	-	-	47	-	-
1970-1973 ^a	-	-	-	64	-	-	61	-	-
1975-1977 ^b	69.9	82.4	58.5	70.6	83.8	58.9	65.0	75.5	55.0
1978-1980 ^b	68.5	78.5	58.9	69.3	79.8	59.5	61.7	70.6	52.7
1981-1983 ^b	68.3	79.6	56.5	69.0	80.8	56.3	61.6	73.7	49.4
1984-1986 ^b	68.1	78.0	56.2	70.0	79.7	57.5	58.3	67.9	48.3
1987-1989 ^b	71.2	79.7	59.4	73.6	82.6	59.9	58.2	63.8	52.9
1990-1992 ^b	70.6	78.9	58.2	71.9	81.2	57.9	58.8	63.3	52.4
1993-1995 ^b	73.3	81.7	60.5	74.7	83.4	60.6	64.0	70.8	54.5
1996-2004 ^b	72.6 ^e	81.2	59.3	73.7 ^e	83.1	58.2	65.3	69.5	59.7
<u>5-YR PERIOD SURVIVAL RATES^{cd}</u>									
YEAR OF DIAGNOSIS:									
1996-2004	70.8	79.0	58.9	72.4	80.8	59.5	60.9	68.0	51.7
<u>STAGE DISTRIBUTION (%) 1996-2004^c</u>									
All Stages									
Number of cases	22,325	12,704	9,621	16,903	9,912	6,991	2,950	1,570	1,380
Percent	100%	100%	100%	100%	100%	100%	100%	100%	100%
Localized	51	62	37	52	63	37	44	53	34
Regional	35	28	44	34	27	44	38	34	43
Distant	10	7	13	9	7	14	11	8	14
Unstaged	5	4	6	5	4	6	7	5	8
<u>5-YR RELATIVE SURVIVAL RATES, 1996-2004^c</u>									
AGE AT DIAGNOSIS:									
<45	81.1	-	-	82.6	-	-	70.3	-	-
45-54	70.4	-	-	71.6	-	-	58.7	-	-
55-64	62.2	-	-	61.5	-	-	56.4	-	-
65-74	58.1	-	-	57.9	-	-	52.0	-	-
75+	42.4	-	-	40.9	-	-	46.1	-	-
Under 65	74.9	-	-	76.2	-	-	64.3	-	-
65 and over	52.0	-	-	51.5	-	-	49.8	-	-
STAGE:									
All Stages	71.2	79.2	59.4	72.5	80.8	59.3	61.8	67.6	54.0
Localized	91.7	93.5	87.5	92.6	94.5	87.8	85.9	86.5	84.1
Regional	55.9	61.5	50.6	56.7	63.0	50.6	47.5	50.6	44.3
Distant	16.6	22.0	12.6	17.5	25.1	11.7	8.9	8.1	9.8
Unstaged	59.4	73.8	44.3	59.2	72.1	44.8	56.6	70.1 ^f	45.1 ^f

^a Rates are based on End Results data from a series of hospital registries and one population-based registry.
^b Rates are from the SEER 9 areas (San Francisco, Connecticut, Detroit, Hawaii, Iowa, New Mexico, Seattle, Utah, Atlanta).
Rates are based on follow-up of patients into 2005.
^c Rates are from the SEER 17 areas (San Francisco, Connecticut, Detroit, Hawaii, Iowa, New Mexico, Seattle, Utah, Atlanta, San Jose-Monterey, Los Angeles, Alaska Native Registry, Rural Georgia, California excluding SF/SJM/LA, Kentucky, Louisiana and New Jersey). California excluding SF/SJM/LA, Kentucky, Louisiana, and New Jersey contribute cases for diagnosis years 2000-2004. The remaining 13 SEER Areas contribute cases for the entire period 1996-2004. Rates are based on follow-up of patients into 2005.
^d Period survival provides a more up-to-date estimate of survival by piecing together the most recent conditional survival estimates from several cohorts. It is computed here using three calendar year blocks (2002-2004: 0-1 year survival), (2001-2003: 1-2 year survival), (2000-2002: 2-3 year survival), (1999-2001: 3-4 year survival), (1998-2000: 4-5 years survival).
^e The difference in rates between 1975-1977 and 1996-2004 is statistically significant (p<.05).
^f The standard error of the survival rate is between 5 and 10 percentage points.
^g The standard error of the survival rate is greater than 10 percentage points.
- Statistic could not be calculated due to fewer than 16 cases during the time period.

Table VI-9
COLON AND RECTUM CANCER (Invasive)

SURVIVAL RATES, BY RACE, SEX, DIAGNOSIS YEAR, STAGE AND AGE

	All Races			Whites			Blacks		
	Total	Males	Females	Total	Males	Females	Total	Males	Females
5-YR RELATIVE SURVIVAL RATES									
YEAR OF DIAGNOSIS:									
1960-1963 ^a	-	-	-	-	-	-	-	-	-
1970-1973 ^a	-	-	-	-	-	-	-	-	-
1975-1977 ^b	50.8	49.8	51.7	50.9	50.1	51.7	46.1	44.4	47.1
1978-1980 ^b	52.5	51.5	53.4	52.9	51.9	53.8	46.2	44.3	47.5
1981-1983 ^b	55.4	55.2	55.7	55.8	55.8	55.9	47.5	43.9	50.3
1984-1986 ^b	58.5	58.4	58.6	59.2	59.2	59.3	49.1	48.2	49.8
1987-1989 ^b	60.6	60.9	60.4	61.1	61.6	60.6	53.4	51.2	55.3
1990-1992 ^b	62.4	62.4	62.4	63.2	63.1	63.2	53.8	55.5	52.3
1993-1995 ^b	60.9	60.4	61.4	61.5	61.0	62.1	52.9	51.7	53.9
1996-2004 ^b	65.3 ^e	65.4 ^e	65.2 ^e	66.3 ^e	66.4 ^e	66.2 ^e	56.0 ^e	56.1 ^e	55.9 ^e
5-YR PERIOD SURVIVAL RATES^{cd}									
YEAR OF DIAGNOSIS:									
1996-2004	65.4	65.6	65.3	66.3	66.5	66.1	57.0	57.1	57.0
STAGE DISTRIBUTION (%) 1996-2004^c									
All Stages									
Number of cases	204,212	103,110	101,102	166,480	84,530	81,950	20,392	9,435	10,957
Percent	100%	100%	100%	100%	100%	100%	100%	100%	100%
Localized	40	40	39	40	41	39	35	36	35
Regional	36	36	37	36	36	37	34	34	35
Distant	19	20	19	19	19	19	24	25	24
Unstaged	5	4	5	5	4	5	6	6	7
5-YR RELATIVE SURVIVAL RATES, 1996-2004^c									
AGE AT DIAGNOSIS:									
<45	66.3	65.8	66.8	68.2	67.2	69.4	57.4	57.9	56.9
45-54	67.7	66.9	68.7	68.8	67.8	70.0	58.9	57.8	60.1
55-64	66.7	66.4	67.3	67.8	67.4	68.4	57.1	56.2	58.2
65-74	66.0	65.5	66.6	66.8	66.2	67.3	57.2	56.5	57.8
75+	59.6	59.9	59.4	60.7	61.2	60.3	46.3	44.3	47.4
Under 65	67.0	66.4	67.6	68.2	67.5	69.1	57.8	57.0	58.6
65 and over	62.8	63.1	62.6	63.6	64.0	63.3	52.3	51.7	52.7
STAGE:									
All Stages	64.4	64.5	64.3	65.3	65.4	65.2	55.1	54.7	55.5
Localized	89.7	89.7	89.8	90.3	90.3	90.2	84.4	83.6	85.1
Regional	68.4	68.4	68.5	69.2	69.3	69.2	61.2	61.6	60.9
Distant	10.8	10.5	11.2	11.1	10.6	11.6	8.3	8.3	8.2
Unstaged	36.6	39.9	33.6	36.0	39.8	32.5	33.7	33.4	33.5

^a Rates are based on End Results data from a series of hospital registries and one population-based registry.

^b Rates are from the SEER 9 areas (San Francisco, Connecticut, Detroit, Hawaii, Iowa, New Mexico, Seattle, Utah, Atlanta).

Rates are based on follow-up of patients into 2005.

^c Rates are from the SEER 17 areas (San Francisco, Connecticut, Detroit, Hawaii, Iowa, New Mexico, Seattle, Utah, Atlanta, San Jose-Monterey, Los Angeles, Alaska Native Registry, Rural Georgia, California excluding SF/SJM/LA, Kentucky, Louisiana and New Jersey). California excluding SF/SJM/LA, Kentucky, Louisiana, and New Jersey contribute cases for diagnosis years 2000-2004. The remaining 13 SEER Areas contribute cases for the entire period 1996-2004. Rates are based on follow-up of patients into 2005.

^d Period survival provides a more up-to-date estimate of survival by piecing together the most recent conditional survival estimates from several cohorts. It is computed here using three calendar year blocks (2002-2004: 0-1 year survival), (2001-2003: 1-2 year survival), (2000-2002: 2-3 year survival), (1999-2001: 3-4 year survival), (1998-2000: 4-5 years survival).

^e The difference in rates between 1975-1977 and 1996-2004 is statistically significant ($p < .05$).

^f The standard error of the survival rate is between 5 and 10 percentage points.

^g The standard error of the survival rate is greater than 10 percentage points.

- Statistic could not be calculated due to fewer than 16 cases during the time period.

Table VI-10
COLON CANCER (Invasive)

SURVIVAL RATES, BY RACE, SEX, DIAGNOSIS YEAR, STAGE AND AGE

	All Races			Whites			Blacks		
	Total	Males	Females	Total	Males	Females	Total	Males	Females
<u>5-YR RELATIVE SURVIVAL RATES</u>									
YEAR OF DIAGNOSIS:									
1960-1963 ^a	-	-	-	43	42	44	34	32	35
1970-1973 ^a	-	-	-	49	47	50	37	36	38
1975-1977 ^b	51.5	50.8	52.0	51.7	51.0	52.2	46.4	45.5	46.8
1978-1980 ^b	53.5	52.5	54.3	53.7	52.6	54.6	49.6	48.0	50.6
1981-1983 ^b	56.5	57.0	56.0	56.7	57.5	56.1	49.7	45.9	52.4
1984-1986 ^b	59.1	59.5	58.7	59.8	60.2	59.4	49.9	49.6	50.1
1987-1989 ^b	61.3	61.9	60.7	61.7	62.5	61.0	53.3	51.7	54.5
1990-1992 ^b	63.2	63.6	62.7	64.0	64.4	63.5	54.2	55.9	52.9
1993-1995 ^b	60.8	60.6	60.9	61.4	61.2	61.6	52.3	51.3	52.9
1996-2004 ^b	64.8 ^e	65.1 ^e	64.6 ^e	66.0 ^e	66.3 ^e	65.7 ^e	55.0 ^e	55.5 ^e	54.6 ^e
<u>5-YR PERIOD SURVIVAL RATES^{cd}</u>									
YEAR OF DIAGNOSIS:									
1996-2004	64.9	65.4	64.4	65.9	66.3	65.4	56.8	57.5	56.3
<u>STAGE DISTRIBUTION (%) 1996-2004^c</u>									
All Stages									
Number of cases	144,938	69,771	75,167	118,208	57,275	60,933	15,375	6,853	8,522
Percent	100%	100%	100%	100%	100%	100%	100%	100%	100%
Localized	37	38	37	38	39	37	33	34	33
Regional	37	37	38	37	37	38	36	35	36
Distant	21	21	21	20	21	20	26	26	26
Unstaged	4	4	5	4	4	5	5	5	6
<u>5-YR RELATIVE SURVIVAL RATES, 1996-2004^c</u>									
AGE AT DIAGNOSIS:									
<45	65.3	66.7	63.7	67.4	67.2	67.7	56.8	61.9	52.4
45-54	65.1	64.9	65.3	66.3	66.0	66.6	56.9	55.5	58.2
55-64	65.6	65.4	65.7	66.8	66.7	67.0	56.0	55.9	56.2
65-74	65.9	65.8	66.0	66.7	66.5	66.9	57.6	57.5	57.7
75+	60.7	61.5	60.2	61.9	62.9	61.2	47.1	45.8	47.8
Under 65	65.4	65.4	65.3	66.7	66.6	66.9	56.4	56.6	56.3
65 and over	63.2	63.8	62.7	64.1	64.8	63.6	52.7	52.8	52.7
STAGE:									
All Stages	63.9	64.4	63.4	64.9	65.4	64.5	54.5	54.8	54.3
Localized	90.7	91.1	90.2	91.3	91.9	90.8	84.9	84.4	85.3
Regional	70.0	70.3	69.6	70.7	71.2	70.3	63.3	64.5	62.4
Distant	11.4	11.2	11.5	11.7	11.2	12.1	8.5	8.4	8.6
Unstaged	30.7	34.3	27.8	30.6	34.5	27.5	26.3	28.1	24.6

^a Rates are based on End Results data from a series of hospital registries and one population-based registry.
^b Rates are from the SEER 9 areas (San Francisco, Connecticut, Detroit, Hawaii, Iowa, New Mexico, Seattle, Utah, Atlanta).
Rates are based on follow-up of patients into 2005.
^c Rates are from the SEER 17 areas (San Francisco, Connecticut, Detroit, Hawaii, Iowa, New Mexico, Seattle, Utah, Atlanta, San Jose-Monterey, Los Angeles, Alaska Native Registry, Rural Georgia, California excluding SF/SJM/LA, Kentucky, Louisiana and New Jersey). California excluding SF/SJM/LA, Kentucky, Louisiana, and New Jersey contribute cases for diagnosis years 2000-2004. The remaining 13 SEER Areas contribute cases for the entire period 1996-2004. Rates are based on follow-up of patients into 2005.
^d Period survival provides a more up-to-date estimate of survival by piecing together the most recent conditional survival estimates from several cohorts. It is computed here using three calendar year blocks (2002-2004: 0-1 year survival), (2001-2003: 1-2 year survival), (2000-2002: 2-3 year survival), (1999-2001: 3-4 year survival), (1998-2000: 4-5 years survival).
^e The difference in rates between 1975-1977 and 1996-2004 is statistically significant (p<.05).
^f The standard error of the survival rate is between 5 and 10 percentage points.
^g The standard error of the survival rate is greater than 10 percentage points.
- Statistic could not be calculated due to fewer than 16 cases during the time period.

Table VI-11
RECTUM CANCER (Invasive)

SURVIVAL RATES, BY RACE, SEX, DIAGNOSIS YEAR, STAGE AND AGE

	All Races			Whites			Blacks		
	Total	Males	Females	Total	Males	Females	Total	Males	Females
<u>5-YR RELATIVE SURVIVAL RATES</u>									
YEAR OF DIAGNOSIS:									
1960-1963 ^a	-	-	-	38	36	41	27	28	27
1970-1973 ^a	-	-	-	45	43	48	30	20	40
1975-1977 ^b	49.2	48.1	50.7	49.4	48.4	50.6	44.9	41.7	47.5
1978-1980 ^b	50.4	49.8	51.1	51.3	50.7	51.9	35.6	35.1	35.9
1981-1983 ^b	53.0	51.5	54.8	53.8	52.3	55.4	40.6	38.3	42.9
1984-1986 ^b	57.3	56.4	58.4	58.0	57.3	58.9	46.4	43.9	48.8
1987-1989 ^b	59.1	58.9	59.5	59.7	59.8	59.5	53.6	49.3	57.8
1990-1992 ^b	60.5	59.7	61.5	61.3	60.4	62.4	52.2	54.1	49.8
1993-1995 ^b	61.2	59.9	62.9	61.7	60.4	63.2	54.8	52.1	57.9
1996-2004 ^b	66.5 ^e	66.0 ^e	67.2 ^e	67.2 ^e	66.8 ^e	67.7 ^e	58.9 ^e	57.7 ^e	60.1 ^e
<u>5-YR PERIOD SURVIVAL RATES^{cd}</u>									
YEAR OF DIAGNOSIS:									
1996-2004	66.6	65.9	67.4	67.3	66.9	67.7	57.6	55.9	59.2
<u>STAGE DISTRIBUTION (%) 1996-2004^c</u>									
All Stages									
Number of cases	59,274	33,339	25,935	48,272	27,255	21,017	5,017	2,582	2,435
Percent	100%	100%	100%	100%	100%	100%	100%	100%	100%
Localized	45	44	45	45	44	45	42	40	44
Regional	34	34	33	34	34	34	30	31	30
Distant	15	16	15	15	16	14	19	21	17
Unstaged	6	6	7	6	5	7	9	8	10
<u>5-YR RELATIVE SURVIVAL RATES, 1996-2004^c</u>									
AGE AT DIAGNOSIS:									
<45	67.8	64.5	71.9	69.5	67.1	72.4	58.5	51.1	67.5
45-54	71.8	69.7	74.8	72.6	70.3	76.0	63.5	61.8	65.2
55-64	69.0	67.9	70.7	69.7	68.6	71.6	60.1	56.7	64.0
65-74	66.5	65.1	68.3	66.9	65.7	68.6	55.8	52.8	58.3
75+	55.9	55.3	56.4	56.7	56.5	56.8	42.3	38.4	44.3
Under 65	69.8	68.0	72.4	70.7	69.0	73.3	61.0	57.7	65.1
65 and over	61.7	61.2	62.2	62.3	62.1	62.4	50.5	47.9	51.9
STAGE:									
All Stages	65.6	64.8	66.7	66.2	65.5	67.0	57.0	54.5	59.7
Localized	87.9	87.2	88.8	88.1	87.5	88.9	83.4	81.7	84.9
Regional	64.6	64.4	64.9	65.5	65.3	65.8	54.1	53.3	54.7
Distant	9.1	8.8	9.7	9.3	8.9	9.9	7.2	8.0	5.7
Unstaged	45.9	47.1	44.5	44.7	46.8	42.1	45.7	40.9	49.0

^a Rates are based on End Results data from a series of hospital registries and one population-based registry.
^b Rates are from the SEER 9 areas (San Francisco, Connecticut, Detroit, Hawaii, Iowa, New Mexico, Seattle, Utah, Atlanta).
Rates are based on follow-up of patients into 2005.
^c Rates are from the SEER 17 areas (San Francisco, Connecticut, Detroit, Hawaii, Iowa, New Mexico, Seattle, Utah, Atlanta, San Jose-Monterey, Los Angeles, Alaska Native Registry, Rural Georgia, California excluding SF/SJM/LA, Kentucky, Louisiana and New Jersey). California excluding SF/SJM/LA, Kentucky, Louisiana, and New Jersey contribute cases for diagnosis years 2000-2004. The remaining 13 SEER Areas contribute cases for the entire period 1996-2004. Rates are based on follow-up of patients into 2005.
^d Period survival provides a more up-to-date estimate of survival by piecing together the most recent conditional survival estimates from several cohorts. It is computed here using three calendar year blocks (2002-2004: 0-1 year survival), (2001-2003: 1-2 year survival), (2000-2002: 2-3 year survival), (1999-2001: 3-4 year survival), (1998-2000: 4-5 years survival).
^e The difference in rates between 1975-1977 and 1996-2004 is statistically significant (p<.05).
^f The standard error of the survival rate is between 5 and 10 percentage points.
^g The standard error of the survival rate is greater than 10 percentage points.
- Statistic could not be calculated due to fewer than 16 cases during the time period.

Table VII-5
CORPUS AND UTERUS, NOS CANCER (Invasive)

SURVIVAL RATES, BY RACE, DIAGNOSIS YEAR, STAGE AND AGE

	All Races, Females			White Females			Black Females		
	All	<50	50+	All	<50	50+	All	<50	50+
5-YR RELATIVE SURVIVAL RATES									
YEAR OF DIAGNOSIS:									
1960-1963 ^a	-	-	-	73	-	-	31	-	-
1970-1973 ^a	-	-	-	81	-	-	44	-	-
1975-1977 ^b	87.6	92.7	87.0	88.7	93.3	88.2	61.0	84.4 ^f	56.1
1978-1980 ^b	83.6	91.7	82.5	84.8	93.1	83.8	55.9	82.0 ^f	50.5
1981-1983 ^b	81.9	91.3	80.6	83.3	92.3	82.2	52.5	82.8 ^f	47.2
1984-1986 ^b	83.5	93.6	82.1	85.0	93.9	83.8	57.8	83.6 ^f	54.0
1987-1989 ^b	83.4	90.2	82.3	85.0	91.0	84.1	58.3	84.6 ^f	54.1
1990-1992 ^b	84.6	90.0	83.6	86.7	92.2	85.8	54.9	72.1 ^f	51.1
1993-1995 ^b	84.0	90.1	82.9	85.7	91.6	84.7	60.0	81.8	55.2
1996-2004 ^b	84.3 ^e	89.4 ^e	83.2 ^e	86.2 ^e	90.9	85.4 ^e	61.3	75.5	57.5
5-YR PERIOD SURVIVAL RATES^{cd}									
YEAR OF DIAGNOSIS:									
1996-2004	82.7	89.0	81.3	84.5	90.0	83.5	60.7	77.8	56.6
STAGE DISTRIBUTION (%) 1996-2004^c									
All Stages									
Number of cases	54,797	8,689	46,108	46,396	6,703	39,693	4,096	673	3,423
Percent	100%	100%	100%	100%	100%	100%	100%	100%	100%
Localized	69	73	69	71	74	70	54	65	52
Regional	17	16	17	17	15	17	22	16	24
Distant	9	7	9	8	7	9	17	12	18
Unstaged	4	4	4	4	4	4	7	7	7
5-YR RELATIVE SURVIVAL RATES, 1996-2004^c									
AGE AT DIAGNOSIS:									
<45	89.7	-	-	90.4	-	-	81.1	-	-
45-54	88.4	-	-	89.5	-	-	70.5	-	-
55-64	85.8	-	-	88.0	-	-	63.1	-	-
65-74	80.1	-	-	83.0	-	-	52.4	-	-
75+	72.0	-	-	74.0	-	-	46.6	-	-
Under 65	87.4	-	-	88.9	-	-	68.9	-	-
65 and over	76.8	-	-	79.3	-	-	50.5	-	-
STAGE:									
All Stages	82.9	89.0	81.6	84.7	89.9	83.7	61.1	77.9	57.2
Localized	95.5	96.4	95.4	96.2	96.6	96.3	83.7	90.8	81.5
Regional	67.5	80.7	65.0	69.7	82.8	67.4	45.0	63.2 ^f	42.3
Distant	23.6	36.7	21.2	25.3	38.8	23.1	13.9	26.7 ^f	12.0
Unstaged	56.1	85.3	49.6	55.5	85.2	49.7	42.4	74.6 ^f	34.2

^a Rates are based on End Results data from a series of hospital registries and one population-based registry.

^b Rates are from the SEER 9 areas (San Francisco, Connecticut, Detroit, Hawaii, Iowa, New Mexico, Seattle, Utah, Atlanta).

Rates are based on follow-up of patients into 2005.

^c Rates are from the SEER 17 areas (San Francisco, Connecticut, Detroit, Hawaii, Iowa, New Mexico, Seattle, Utah, Atlanta, San Jose-Monterey, Los Angeles, Alaska Native Registry, Rural Georgia, California excluding SF/SJM/LA, Kentucky, Louisiana and New Jersey). California excluding SF/SJM/LA, Kentucky, Louisiana, and New Jersey contribute cases for diagnosis years 2000-2004. The remaining 13 SEER Areas contribute cases for the entire period 1996-2004. Rates are based on follow-up of patients into 2005.

^d Period survival provides a more up-to-date estimate of survival by piecing together the most recent conditional survival estimates from several cohorts. It is computed here using three calendar year blocks (2002-2004: 0-1 year survival), (2001-2003: 1-2 year survival), (2000-2002: 2-3 year survival), (1999-2001: 3-4 year survival), (1998-2000: 4-5 years survival).

^e The difference in rates between 1975-1977 and 1996-2004 is statistically significant (p<.05).

^f The standard error of the survival rate is between 5 and 10 percentage points.

^g The standard error of the survival rate is greater than 10 percentage points.

- Statistic could not be calculated due to fewer than 16 cases during the time period.

Table VIII-5
ESOPHAGUS CANCER (Invasive)

SURVIVAL RATES, BY RACE, SEX, DIAGNOSIS YEAR, STAGE AND AGE

	All Races			Whites			Blacks		
	Total	Males	Females	Total	Males	Females	Total	Males	Females
<u>5-YR RELATIVE SURVIVAL RATES</u>									
YEAR OF DIAGNOSIS:									
1960-1963 ^a	-	-	-	4	4	6	1	0	2
1970-1973 ^a	-	-	-	4	4	4	4	4	3
1975-1977 ^b	5.1	4.0	7.5	5.6	4.9	7.1	3.1	1.6	7.1
1978-1980 ^b	5.2	4.9	5.7	5.6	5.6	5.3	4.3	3.3	7.0
1981-1983 ^b	6.8	6.2	8.4	7.6	6.8	9.3	4.3	3.6	6.5
1984-1986 ^b	9.7	8.5	12.5	10.6	9.3	13.6	8.2	7.6	9.9
1987-1989 ^b	9.8	9.6	10.1	11.0	11.4	9.8	6.4	5.0	10.3
1990-1992 ^b	12.7	12.3	13.8	13.6	12.9	15.4	9.4	9.7	8.4
1993-1995 ^b	12.7	12.8	12.4	14.3	14.4	13.7	7.5	7.6	7.2
1996-2004 ^b	16.9 ^e	16.4 ^e	18.9 ^e	18.1 ^e	17.6 ^e	19.7 ^e	11.1 ^e	9.0 ^e	15.6
<u>5-YR PERIOD SURVIVAL RATES^{cd}</u>									
YEAR OF DIAGNOSIS:									
1996-2004	17.1	16.5	19.4	18.2	17.8	19.8	10.3	8.5	14.8
<u>STAGE DISTRIBUTION (%) 1996-2004^c</u>									
All Stages									
Number of cases	17,946	13,588	4,358	14,661	11,243	3,418	2,220	1,533	687
Percent	100%	100%	100%	100%	100%	100%	100%	100%	100%
Localized	24	23	25	24	24	27	21	22	22
Regional	30	31	28	30	31	27	29	30	29
Distant	30	32	25	30	32	24	32	33	29
Unstaged	16	14	21	16	14	22	17	16	20
<u>5-YR RELATIVE SURVIVAL RATES, 1996-2004^c</u>									
AGE AT DIAGNOSIS:									
<45	20.9	20.4	22.8	21.4	20.4	27.0 ^f	17.4	18.9 ^f	14.3 ^f
45-54	17.2	17.0	17.8	18.8	18.8	17.9	11.1	8.7	17.8
55-64	17.3	16.5	21.0	18.4	17.4	23.3	11.3	10.5	13.1
65-74	15.8	15.3	17.3	16.7	16.4	17.5	8.0	6.2	11.6
75+	11.7	10.9	13.0	12.3	11.4	13.7	6.9	7.3	5.4
Under 65	17.7	17.1	20.4	18.9	18.3	22.2	11.9	10.5	15.2
65 and over	14.1	13.7	15.1	14.8	14.5	15.5	7.7	6.6	9.5
STAGE:									
All Stages	15.8	15.5	17.0	16.7	16.5	17.6	10.3	9.2	12.9
Localized	34.4	35.0	32.1	36.7	37.8	32.7	19.1	15.7	25.9
Regional	17.1	16.2	20.3	18.3	17.6	20.7	11.2	9.1	16.4
Distant	2.8	2.7	3.2	2.8	2.6	3.5	2.0	2.0	1.8
Unstaged	11.6	11.4	12.0	10.6	10.0	11.7	13.3	14.7	10.3

^a Rates are based on End Results data from a series of hospital registries and one population-based registry.
^b Rates are from the SEER 9 areas (San Francisco, Connecticut, Detroit, Hawaii, Iowa, New Mexico, Seattle, Utah, Atlanta).
Rates are based on follow-up of patients into 2005.
^c Rates are from the SEER 17 areas (San Francisco, Connecticut, Detroit, Hawaii, Iowa, New Mexico, Seattle, Utah, Atlanta, San Jose-Monterey, Los Angeles, Alaska Native Registry, Rural Georgia, California excluding SF/SJM/LA, Kentucky, Louisiana and New Jersey). California excluding SF/SJM/LA, Kentucky, Louisiana, and New Jersey contribute cases for diagnosis years 2000-2004. The remaining 13 SEER Areas contribute cases for the entire period 1996-2004. Rates are based on follow-up of patients into 2005.
^d Period survival provides a more up-to-date estimate of survival by piecing together the most recent conditional survival estimates from several cohorts. It is computed here using three calendar year blocks (2002-2004: 0-1 year survival), (2001-2003: 1-2 year survival), (2000-2002: 2-3 year survival), (1999-2001: 3-4 year survival), (1998-2000: 4-5 years survival).
^e The difference in rates between 1975-1977 and 1996-2004 is statistically significant (p<.05).
^f The standard error of the survival rate is between 5 and 10 percentage points.
^g The standard error of the survival rate is greater than 10 percentage points.
- Statistic could not be calculated due to fewer than 16 cases during the time period.

Table IX-5
HODGKIN LYMPHOMA

SURVIVAL RATES, BY RACE, SEX, DIAGNOSIS YEAR AND AGE

	<u>All Races</u>			<u>Whites</u>			<u>Blacks</u>		
	<u>Total</u>	<u>Males</u>	<u>Females</u>	<u>Total</u>	<u>Males</u>	<u>Females</u>	<u>Total</u>	<u>Males</u>	<u>Females</u>
<u>5-YR RELATIVE SURVIVAL RATES</u>									
YEAR OF DIAGNOSIS:									
1960-1963 ^a	-	-	-	40	34	48	-	-	-
1970-1973 ^a	-	-	-	67	66	69	-	-	-
1975-1977 ^b	73.5	71.8	75.7	73.9	72.1	76.0	71.3	69.3 ^f	75.3 ^f
1978-1980 ^b	73.4	72.1	75.0	73.5	71.8	75.9	71.4	75.4 ^f	64.0 ^f
1981-1983 ^b	75.7	74.5	77.3	76.1	75.3	77.1	73.4	71.1 ^f	77.5 ^f
1984-1986 ^b	79.3	77.5	81.5	79.9	78.0	82.1	74.8	75.5 ^f	72.3 ^f
1987-1989 ^b	80.4	77.8	83.6	81.0	78.1	84.5	72.8	72.2 ^f	73.5 ^f
1990-1992 ^b	82.9	80.5	85.6	84.0	82.5	86.0	74.2	65.0	84.3
1993-1995 ^b	82.8	80.1	86.0	83.4	81.0	86.2	78.5	74.2	82.9
1996-2004 ^b	86.2 ^e	84.7 ^e	88.0 ^e	87.2 ^e	85.8 ^e	88.9 ^e	80.4 ^e	77.4	83.4
<u>5-YR PERIOD SURVIVAL RATES^{cd}</u>									
YEAR OF DIAGNOSIS:									
1996-2004	84.7	82.8	87.0	85.3	83.7	87.0	81.0	75.6	86.3
<u>5-YR RELATIVE SURVIVAL RATES, 1996-2004^c</u>									
AGE AT DIAGNOSIS:									
<45	91.6	90.1	93.3	92.4	90.9	94.1	84.5	82.2	87.0
45-54	82.9	79.6	88.0	83.8	80.7	88.4	76.2	69.2 ^f	86.9
55-64	71.1	66.4	78.7	70.6	67.1	76.5	74.4 ^f	58.8 ^f	89.9
65-74	57.2	55.9	58.5	56.7	56.0	57.2	65.0 ^f	60.9 ^g	68.1 ^g
75+	42.5	43.8	40.3	44.3	45.0	42.5	38.8 ^g	-	-
Under 65	88.7	86.3	91.6	89.4	87.1	92.1	82.6	78.2	87.8
65 and over	51.5	52.2	50.6	51.8	52.7	50.8	57.8 ^f	59.2 ^g	56.1 ^g

^a Rates are based on End Results data from a series of hospital registries and one population-based registry.

^b Rates are from the SEER 9 areas (San Francisco, Connecticut, Detroit, Hawaii, Iowa, New Mexico, Seattle, Utah, Atlanta).

Rates are based on follow-up of patients into 2005.

^c Rates are from the SEER 17 areas (San Francisco, Connecticut, Detroit, Hawaii, Iowa, New Mexico, Seattle, Utah, Atlanta, San Jose-Monterey, Los Angeles, Alaska Native Registry, Rural Georgia, California excluding SF/SJM/LA, Kentucky, Louisiana and New Jersey). California excluding SF/SJM/LA, Kentucky, Louisiana, and New Jersey contribute cases for diagnosis years 2000-2004. The remaining 13 SEER Areas contribute cases for the entire period 1996-2004. Rates are based on follow-up of patients into 2005.

^d Period survival provides a more up-to-date estimate of survival by piecing together the most recent conditional survival estimates from several cohorts. It is computed here using three calendar year blocks (2002-2004: 0-1 year survival), (2001-2003: 1-2 year survival), (2000-2002: 2-3 year survival), (1999-2001: 3-4 year survival), (1998-2000: 4-5 years survival).

^e The difference in rates between 1975-1977 and 1996-2004 is statistically significant ($p < .05$).

^f The standard error of the survival rate is between 5 and 10 percentage points.

^g The standard error of the survival rate is greater than 10 percentage points.

- Statistic could not be calculated due to fewer than 16 cases during the time period.

Table X-6
KAPOSI SARCOMA

SURVIVAL RATES, BY RACE, SEX, DIAGNOSIS YEAR, STAGE AND AGE

	All Races			Whites			Blacks		
	Total	Males	Females	Total	Males	Females	Total	Males	Females
<u>5-YR RELATIVE SURVIVAL RATES</u>									
YEAR OF DIAGNOSIS:									
1960-1963 ^a	-	-	-	-	-	-	-	-	-
1970-1973 ^a	-	-	-	-	-	-	-	-	-
1975-1977 ^b	83.2 ^f	82.0 ^f	82.8 ^g	82.0 ^f	80.0 ^f	80.9 ^g	-	-	-
1978-1980 ^b	78.9 ^f	80.6 ^f	72.6 ^g	78.2 ^f	79.2 ^f	72.4 ^g	-	-	-
1981-1983 ^b	33.8	31.1	74.4 ^g	32.1	29.5	72.5 ^g	44.4 ^g	41.5 ^g	-
1984-1986 ^b	12.2	11.1	71.4 ^g	11.9	10.7	70.2 ^g	16.3	15.2	-
1987-1989 ^b	9.8	9.2	65.8 ^g	9.3	8.8	71.4 ^g	11.9	10.8	-
1990-1992 ^b	9.0	8.4	50.6 ^f	8.5	8.0	50.1 ^f	11.5	10.5	-
1993-1995 ^b	21.1	20.6	48.6 ^f	21.6	21.1	58.5 ^g	15.8	15.1	32.5 ^g
1996-2004 ^b	54.6 ^e	54.1 ^e	63.6 ^f	60.0 ^e	58.9 ^e	80.3 ^f	40.7	40.9	38.3 ^f
<u>5-YR PERIOD SURVIVAL RATES^{cd}</u>									
YEAR OF DIAGNOSIS:									
1996-2004	61.9	62.0	60.9	64.8	64.5	69.8	47.3	48.1	-
<u>5-YR RELATIVE SURVIVAL RATES, 1996-2004^c</u>									
AGE AT DIAGNOSIS:									
<45	52.8	53.0	42.9 ^f	55.5	55.4	69.7 ^g	41.2	42.4	16.8 ^f
45-54	54.3	55.2	21.1 ^g	55.0	55.5	-	48.5	50.5	-
55-64	72.8	72.7	-	72.3	71.9	-	60.5 ^g	59.7 ^g	-
65-74	80.8	81.9 ^f	72.8 ^g	81.7	81.6 ^f	78.5 ^g	-	-	-
75+	88.7 ^f	89.8 ^f	78.1 ^f	90.5 ^f	91.2 ^f	81.3 ^f	90.0 ^g	-	-
Under 65	54.2	54.5	43.2 ^f	56.6	56.5	62.9 ^f	43.1	44.2	19.7 ^f
65 and over	85.9	87.0	78.5 ^f	87.7	87.5	81.2 ^f	75.3 ^g	64.4 ^g	-

- ^a Rates are based on End Results data from a series of hospital registries and one population-based registry.
- ^b Rates are from the SEER 9 areas (San Francisco, Connecticut, Detroit, Hawaii, Iowa, New Mexico, Seattle, Utah, Atlanta).
- ^c Rates are based on follow-up of patients into 2005.
- ^d Rates are from the SEER 17 areas (San Francisco, Connecticut, Detroit, Hawaii, Iowa, New Mexico, Seattle, Utah, Atlanta, San Jose-Monterey, Los Angeles, Alaska Native Registry, Rural Georgia, California excluding SF/SJM/LA, Kentucky, Louisiana and New Jersey). California excluding SF/SJM/LA, Kentucky, Louisiana, and New Jersey contribute cases for diagnosis years 2000-2004. The remaining 13 SEER Areas contribute cases for the entire period 1996-2004. Rates are based on follow-up of patients into 2005.
- ^e Period survival provides a more up-to-date estimate of survival by piecing together the most recent conditional survival estimates from several cohorts. It is computed here using three calendar year blocks (2002-2004: 0-1 year survival), (2001-2003: 1-2 year survival), (2000-2002: 2-3 year survival), (1999-2001: 3-4 year survival), (1998-2000: 4-5 years survival).
- ^f The difference in rates between 1975-1977 and 1996-2004 is statistically significant (p<.05).
- ^g The standard error of the survival rate is between 5 and 10 percentage points.
- The standard error of the survival rate is greater than 10 percentage points.
- Statistic could not be calculated due to fewer than 16 cases during the time period.

Table XI-5
KIDNEY AND RENAL PELVIS CANCER (Invasive)

SURVIVAL RATES, BY RACE, SEX, DIAGNOSIS YEAR, STAGE AND AGE

	All Races			Whites			Blacks		
	Total	Males	Females	Total	Males	Females	Total	Males	Females
5-YR RELATIVE SURVIVAL RATES									
YEAR OF DIAGNOSIS:									
1960-1963 ^a	-	-	-	37	36	39	38	38	37
1970-1973 ^a	-	-	-	46	44	50	44	40	49
1975-1977 ^b	50.9	51.0	50.8	50.7	50.9	50.3	49.7	48.2	52.0 ^f
1978-1980 ^b	54.1	53.8	54.4	53.8	54.1	53.3	57.1	52.0	63.4 ^f
1981-1983 ^b	51.4	52.2	50.0	51.3	52.4	49.5	51.9	51.8	52.0
1984-1986 ^b	55.8	56.3	55.1	56.0	56.6	55.0	54.0	50.5	59.1
1987-1989 ^b	57.9	58.2	57.4	58.5	59.2	57.4	55.8	53.2	58.6
1990-1992 ^b	61.5	61.7	61.3	62.1	62.4	61.6	57.7	55.9	59.4
1993-1995 ^b	62.6	62.5	62.9	63.1	63.6	62.4	58.6	55.2	63.5
1996-2004 ^b	66.7 ^e	65.8 ^e	68.2 ^e	66.6 ^e	65.9 ^e	67.8 ^e	66.1 ^e	64.2 ^e	67.8 ^e
5-YR PERIOD SURVIVAL RATES^{cd}									
YEAR OF DIAGNOSIS:									
1996-2004	68.5	67.9	69.6	68.5	67.7	69.8	65.4	65.0	65.4
STAGE DISTRIBUTION (%) 1996-2004^c									
All Stages									
Number of cases	48,086	29,490	18,596	40,369	24,835	15,534	4,776	2,809	1,967
Percent	100%	100%	100%	100%	100%	100%	100%	100%	100%
Localized	56	55	58	56	55	57	60	60	61
Regional	19	20	18	20	20	19	15	16	14
Distant	20	21	19	20	21	19	19	20	19
Unstaged	5	4	5	5	4	6	5	5	6
5-YR RELATIVE SURVIVAL RATES, 1996-2004^c									
AGE AT DIAGNOSIS:									
<45	80.4	78.1	83.4	81.5	79.4	84.5	73.3	69.0	77.8
45-54	72.1	70.2	76.2	72.2	69.9	76.9	69.1	68.0	70.8
55-64	67.5	66.8	69.0	68.0	67.3	69.4	63.1	60.5	67.0
65-74	63.0	61.8	64.8	62.9	61.6	64.9	62.9	62.9	61.6
75+	52.9	54.8	50.9	53.2	55.7	50.8	48.0	48.7 ^f	46.6
Under 65	71.9	70.2	75.1	72.2	70.5	75.5	68.2	65.4	72.2
65 and over	59.0	59.3	58.5	59.0	59.5	58.5	57.6	59.3	55.1
STAGE:									
All Stages	66.5	66.0	67.3	66.5	66.1	67.2	65.0	63.6	66.3
Localized	89.9	89.6	90.4	90.4	90.1	90.9	86.1	85.3	86.8
Regional	61.3	62.5	59.0	61.3	62.7	58.8	56.2	55.3	55.9
Distant	9.9	10.0	9.6	9.6	10.0	8.9	10.8	8.7	13.6
Unstaged	35.5	37.5	32.7	33.8	36.9	29.6	36.7	33.4 ^f	38.9 ^f

^a Rates are based on End Results data from a series of hospital registries and one population-based registry.

^b Rates are from the SEER 9 areas (San Francisco, Connecticut, Detroit, Hawaii, Iowa, New Mexico, Seattle, Utah, Atlanta).

Rates are based on follow-up of patients into 2005.

^c Rates are from the SEER 17 areas (San Francisco, Connecticut, Detroit, Hawaii, Iowa, New Mexico, Seattle, Utah, Atlanta, San Jose-Monterey, Los Angeles, Alaska Native Registry, Rural Georgia, California excluding SF/SJM/LA, Kentucky, Louisiana and New Jersey). California excluding SF/SJM/LA, Kentucky, Louisiana, and New Jersey contribute cases for diagnosis years 2000-2004. The remaining 13 SEER Areas contribute cases for the entire period 1996-2004. Rates are based on follow-up of patients into 2005.

^d Period survival provides a more up-to-date estimate of survival by piecing together the most recent conditional survival estimates from several cohorts. It is computed here using three calendar year blocks (2002-2004: 0-1 year survival), (2001-2003: 1-2 year survival), (2000-2002: 2-3 year survival), (1999-2001: 3-4 year survival), (1998-2000: 4-5 years survival).

^e The difference in rates between 1975-1977 and 1996-2004 is statistically significant ($p < .05$).

^f The standard error of the survival rate is between 5 and 10 percentage points.

^g The standard error of the survival rate is greater than 10 percentage points.

- Statistic could not be calculated due to fewer than 16 cases during the time period.

Table XII-5
LARYNX CANCER (Invasive)

SURVIVAL RATES, BY RACE, SEX, DIAGNOSIS YEAR, STAGE AND AGE

	All Races			Whites			Blacks		
	Total	Males	Females	Total	Males	Females	Total	Males	Females
<u>5-YR RELATIVE SURVIVAL RATES</u>									
YEAR OF DIAGNOSIS:									
1960-1963 ^a	-	-	-	53	54	46	-	-	-
1970-1973 ^a	-	-	-	62	63	56	-	-	-
1975-1977 ^b	66.6	67.3	62.8	67.2	68.1	62.5	59.2	58.3	63.5 ^f
1978-1980 ^b	66.0	66.3	64.6	67.0	67.3	65.3	57.1	57.3	56.0 ^f
1981-1983 ^b	68.8	69.0	67.8	70.2	70.5	69.3	56.5	57.3	53.1 ^f
1984-1986 ^b	65.7	66.4	62.3	67.6	68.3	64.2	52.8	53.4	50.8 ^f
1987-1989 ^b	66.4	67.5	62.4	67.8	69.3	61.9	57.2	55.2	63.2 ^f
1990-1992 ^b	66.5	67.3	63.5	68.4	69.1	65.6	53.2	53.7	51.1 ^f
1993-1995 ^b	63.8	65.5	57.3	65.4	67.2	58.2	53.0	54.2	48.0 ^f
1996-2004 ^b	63.7 ^e	65.0	58.7	65.8	66.9	61.8	50.3	52.8	43.1
 <u>5-YR PERIOD SURVIVAL RATES^{cd}</u>									
YEAR OF DIAGNOSIS:									
1996-2004	62.1	63.5	57.1	63.4	64.5	59.3	51.6	53.8	43.7
 <u>5-YR RELATIVE SURVIVAL RATES, 1996-2004^c</u>									
AGE AT DIAGNOSIS:									
<45	72.1	70.5	75.5	74.7	72.8	78.8	59.9	58.7 ^f	61.5 ^f
45-54	64.0	64.2	63.1	67.4	67.3	68.1	50.1	50.9	47.1 ^f
55-64	62.9	63.9	58.9	64.6	65.6	60.6	52.5	53.5	49.2
65-74	61.4	63.5	53.8	61.7	63.2	55.8	51.4	58.0	26.6 ^f
75+	57.2	60.6	45.8	58.3	61.6	47.7	43.7 ^f	45.3 ^f	33.0 ^f
Under 65	64.4	64.8	63.0	66.8	67.1	65.9	52.7	53.3	51.0
65 and over	60.6	62.9	52.2	61.1	63.1	54.1	49.3	54.0	30.9 ^f

^a Rates are based on End Results data from a series of hospital registries and one population-based registry.
^b Rates are from the SEER 9 areas (San Francisco, Connecticut, Detroit, Hawaii, Iowa, New Mexico, Seattle, Utah, Atlanta).
Rates are based on follow-up of patients into 2005.
^c Rates are from the SEER 17 areas (San Francisco, Connecticut, Detroit, Hawaii, Iowa, New Mexico, Seattle, Utah, Atlanta, San Jose-Monterey, Los Angeles, Alaska Native Registry, Rural Georgia, California excluding SF/SJM/LA, Kentucky, Louisiana and New Jersey). California excluding SF/SJM/LA, Kentucky, Louisiana, and New Jersey contribute cases for diagnosis years 2000-2004. The remaining 13 SEER Areas contribute cases for the entire period 1996-2004. Rates are based on follow-up of patients into 2005.
^d Period survival provides a more up-to-date estimate of survival by piecing together the most recent conditional survival estimates from several cohorts. It is computed here using three calendar year blocks (2002-2004: 0-1 year survival), (2001-2003: 1-2 year survival), (2000-2002: 2-3 year survival), (1999-2001: 3-4 year survival), (1998-2000: 4-5 years survival).
^e The difference in rates between 1975-1977 and 1996-2004 is statistically significant (p<.05).
^f The standard error of the survival rate is between 5 and 10 percentage points.
^g The standard error of the survival rate is greater than 10 percentage points.
- Statistic could not be calculated due to fewer than 16 cases during the time period.

Table XIII-11
LEUKEMIA

SURVIVAL RATES, BY RACE, SEX, DIAGNOSIS YEAR AND AGE

	All Races			Whites			Blacks		
	Total	Males	Females	Total	Males	Females	Total	Males	Females
<u>5-YR RELATIVE SURVIVAL RATES</u>									
YEAR OF DIAGNOSIS:									
1960-1963 ^a	-	-	-	14	-	-	-	-	-
1970-1973 ^a	-	-	-	22	-	-	-	-	-
1975-1977 ^b	35.4	34.4	36.7	36.0	35.0	37.1	33.5	30.4	36.7
1978-1980 ^b	37.8	36.8	39.1	38.5	37.6	39.7	29.4	28.5	30.5
1981-1983 ^b	39.2	39.0	39.6	40.2	40.0	40.4	34.2	33.4	35.0
1984-1986 ^b	41.9	41.3	42.6	43.1	42.6	43.7	33.7	32.5	35.0
1987-1989 ^b	44.4	45.9	42.5	45.5	47.5	42.9	36.7	35.0	38.7
1990-1992 ^b	46.7	46.4	47.1	48.0	48.2	47.8	37.4	31.6	43.7
1993-1995 ^b	48.5	49.2	47.7	49.5	50.1	48.6	42.3	41.6	43.1
1996-2004 ^b	51.2 ^e	51.5 ^e	50.8 ^e	52.2 ^e	52.4 ^e	51.9 ^e	42.4	42.2 ^e	42.5
<u>5-YR PERIOD SURVIVAL RATES^{cd}</u>									
YEAR OF DIAGNOSIS:									
1996-2004	53.4	54.0	52.7	53.6	54.3	52.6	47.0	46.2	47.8
<u>5-YR RELATIVE SURVIVAL RATES, 1996-2004^c</u>									
AGE AT DIAGNOSIS:									
<45	66.8	65.8	68.1	68.2	67.3	69.4	54.8	51.4	59.1
45-54	57.5	59.4	54.7	58.9	60.3	56.7	46.9	50.4	42.3
55-64	54.3	54.8	53.3	55.8	56.3	55.0	37.3	35.9	39.1
65-74	44.1	42.4	46.8	45.0	43.0	48.1	36.8	35.5	38.0
75+	30.9	30.2	31.7	31.5	30.7	32.3	25.4	20.2	26.7
Under 65	61.3	61.2	61.4	62.6	62.4	62.8	48.8	47.7	50.3
65 and over	37.4	36.8	38.1	38.0	37.3	38.9	31.7	30.8	32.1

- ^a Rates are based on End Results data from a series of hospital registries and one population-based registry.
- ^b Rates are from the SEER 9 areas (San Francisco, Connecticut, Detroit, Hawaii, Iowa, New Mexico, Seattle, Utah, Atlanta).
- ^c Rates are based on follow-up of patients into 2005.
- ^d Rates are from the SEER 17 areas (San Francisco, Connecticut, Detroit, Hawaii, Iowa, New Mexico, Seattle, Utah, Atlanta, San Jose-Monterey, Los Angeles, Alaska Native Registry, Rural Georgia, California excluding SF/SJM/LA, Kentucky, Louisiana and New Jersey). California excluding SF/SJM/LA, Kentucky, Louisiana, and New Jersey contribute cases for diagnosis years 2000-2004. The remaining 13 SEER Areas contribute cases for the entire period 1996-2004. Rates are based on follow-up of patients into 2005.
- ^e Period survival provides a more up-to-date estimate of survival by piecing together the most recent conditional survival estimates from several cohorts. It is computed here using three calendar year blocks (2002-2004: 0-1 year survival), (2001-2003: 1-2 year survival), (2000-2002: 2-3 year survival), (1999-2001: 3-4 year survival), (1998-2000: 4-5 years survival).
- ^f The difference in rates between 1975-1977 and 1996-2004 is statistically significant ($p < .05$).
- ^g The standard error of the survival rate is between 5 and 10 percentage points.
- The standard error of the survival rate is greater than 10 percentage points.
- Statistic could not be calculated due to fewer than 16 cases during the time period.

Table XIII-12
LYMPHOCYTIC LEUKEMIA

SURVIVAL RATES, BY RACE, SEX, DIAGNOSIS YEAR AND AGE

	All Races			Whites			Blacks		
	Total	Males	Females	Total	Males	Females	Total	Males	Females
ACUTE LYMPHOCYTIC LEUKEMIA									
5-YR RELATIVE SURVIVAL RATES									
YEAR OF DIAGNOSIS:									
1975-1977 ^a	42.4	38.6	47.4	42.8	39.2	47.9	34.5 ^e	-	38.9 ^f
1978-1980 ^a	50.4	46.8	55.6	50.8	47.4	55.5	31.7 ^e	31.4 ^e	-
1981-1983 ^a	52.0	48.7	56.4	52.8	49.6	57.2	43.4 ^e	37.6 ^e	49.1 ^e
1984-1986 ^a	53.5	50.3	57.8	54.5	50.6	59.9	36.0 ^e	43.6 ^e	27.4 ^e
1987-1989 ^a	56.1	55.7	56.7	56.9	57.0	56.6	46.1 ^e	43.1 ^e	48.0 ^e
1990-1992 ^a	59.7	56.3	64.6	59.6	57.0	63.5	57.8 ^e	51.0 ^e	63.8 ^e
1993-1995 ^a	61.5	58.7	65.3	61.0	58.6	64.2	53.9 ^e	45.7 ^e	65.0 ^e
1996-2004 ^a	66.1 ^d	64.8 ^d	67.9 ^d	67.1 ^d	65.8 ^d	68.8 ^d	58.3 ^d	54.6 ^e	62.8 ^e
5-YR PERIOD SURVIVAL RATES^{bc}									
YEAR OF DIAGNOSIS:									
1996-2004	65.7	64.5	67.1	65.8	65.3	66.3	64.2	52.0	79.2
5-YR RELATIVE SURVIVAL RATES, 1996-2004^b									
AGE AT DIAGNOSIS:									
<45	74.5	72.1	77.8	75.2	72.9	78.4	65.9	59.1	74.4
45-54	24.1	24.7	23.0	24.2	25.1	22.7	12.8 ^e	17.5 ^e	-
55-64	16.5	15.9	16.8	15.4	15.5	15.1	11.8 ^e	-	-
65-74	9.6	9.2	10.4	10.7	10.6	11.3	0.0	-	-
75+	7.0	3.4	8.9	5.6	-	8.1	-	-	-
Under 65	68.6	66.8	71.2	69.2	67.5	71.6	60.0	54.2	67.2
65 and over	8.4	7.1	9.6	8.5	7.3	9.7	10.8 ^e	-	13.1 ^f
CHRONIC LYMPHOCYTIC LEUKEMIA									
5-YR RELATIVE SURVIVAL RATES									
YEAR OF DIAGNOSIS:									
1975-1977 ^a	69.0	66.8	71.8	69.8	67.5	72.8	57.2 ^e	56.3 ^e	57.9 ^e
1978-1980 ^a	70.6	67.9	74.3	71.4	68.4	75.3	59.2 ^e	59.6 ^e	58.4 ^e
1981-1983 ^a	68.4	67.9	69.2	69.1	68.9	69.5	57.6 ^e	54.3 ^e	62.9 ^e
1984-1986 ^a	73.9	72.5	75.8	74.1	72.7	76.0	70.1 ^e	67.3 ^e	70.5 ^e
1987-1989 ^a	74.5	74.6	74.5	75.6	75.8	75.3	60.4	59.0 ^e	62.5 ^e
1990-1992 ^a	75.6	74.2	77.4	76.7	75.6	78.3	54.0 ^e	45.3 ^e	62.7 ^e
1993-1995 ^a	77.6	77.0	78.3	78.4	77.8	79.3	64.4	63.0 ^e	66.4 ^e
1996-2004 ^a	76.2 ^d	75.2 ^d	77.6 ^d	76.8 ^d	75.9 ^d	78.2 ^d	60.0	54.0	66.6 ^e
5-YR PERIOD SURVIVAL RATES^{bc}									
YEAR OF DIAGNOSIS:									
1996-2004	76.4	75.8	77.2	76.5	76.1	77.2	64.6	60.3	70.1
5-YR RELATIVE SURVIVAL RATES, 1996-2004^b									
AGE AT DIAGNOSIS:									
<45	89.0	89.0	88.7	91.3	90.5	92.9	63.8 ^e	70.6 ^f	54.5 ^f
45-54	85.5	83.8	88.9	86.8	84.7	91.1	67.9 ^e	65.1 ^e	74.5 ^e
55-64	83.4	81.0	88.3	84.3	82.6	87.9	63.2	52.4 ^e	82.9 ^e
65-74	77.6	73.5	84.3	78.2	74.0	84.6	64.7	60.5 ^e	70.1 ^e
75+	62.3	60.9	63.7	62.6	61.0	64.1	50.8 ^e	35.8 ^e	59.2 ^e
Under 65	84.6	82.7	88.6	85.8	84.0	89.4	64.9	58.9	76.3
65 and over	70.1	68.1	72.7	70.4	68.3	73.0	59.3	53.3	64.7 ^e

^a Rates are from the SEER 9 areas (San Francisco, Connecticut, Detroit, Hawaii, Iowa, New Mexico, Seattle, Utah, Atlanta). Rates are based on follow-up of patients into 2005.

^b Rates are from the SEER 17 areas (San Francisco, Connecticut, Detroit, Hawaii, Iowa, New Mexico, Seattle, Utah, Atlanta, San Jose-Monterey, Los Angeles, Alaska Native Registry, Rural Georgia, California excluding SF/SJM/LA, Kentucky, Louisiana and New Jersey). California excluding SF/SJM/LA, Kentucky, Louisiana, and New Jersey contribute cases for diagnosis years 2000-2004. The remaining 13 SEER Areas contribute cases for the entire period 1996-2004. Rates are based on follow-up of patients into 2005.

^c Period survival provides a more up-to-date estimate of survival by piecing together the most recent conditional survival estimates from several cohorts. It is computed here using three calendar year blocks (2002-2004: 0-1 year survival), (2001-2003: 1-2 year survival), (2000-2002: 2-3 year survival), (1999-2001: 3-4 year survival), (1998-2000: 4-5 years survival).

^d The difference in rates between 1975-1977 and 1996-2004 is statistically significant ($p < .05$).

^e The standard error of the survival rate is between 5 and 10 percentage points.

^f The standard error of the survival rate is greater than 10 percentage points.

- Statistic could not be calculated due to fewer than 16 cases during the time period.

Table XIII-13
MYELOID LEUKEMIA

	SURVIVAL RATES, BY RACE, SEX, DIAGNOSIS YEAR AND AGE								
	All Races			Whites			Blacks		
	Total	Males	Females	Total	Males	Females	Total	Males	Females
ACUTE MYELOID LEUKEMIA									
5-YR RELATIVE SURVIVAL RATES									
YEAR OF DIAGNOSIS:									
1975-1977 ^a	6.6	6.1	7.1	6.3	6.1	6.5	10.6	8.5 ^e	12.1 ^e
1978-1980 ^a	8.4	7.9	9.0	7.8	6.9	8.8	10.2	7.2	13.2
1981-1983 ^a	9.5	8.3	10.8	8.7	7.3	10.4	12.5	16.4 ^e	8.8
1984-1986 ^a	12.0	10.5	13.7	11.8	10.4	13.3	10.2	6.8	13.3
1987-1989 ^a	12.8	10.4	15.4	12.7	11.1	14.5	10.1	4.7	16.9 ^e
1990-1992 ^a	15.3	13.8	17.0	15.1	13.5	16.8	14.6	14.3	14.7
1993-1995 ^a	18.0	16.6	19.6	17.3	15.9	19.0	23.6	22.7 ^e	23.5 ^e
1996-2004 ^a	21.3 ^d	20.0 ^d	23.0 ^d	20.6 ^d	18.8 ^d	22.6 ^d	24.5 ^d	28.0 ^d	19.9
5-YR PERIOD SURVIVAL RATES^{bc}									
YEAR OF DIAGNOSIS:									
1996-2004	23.2	22.4	24.0	22.2	21.6	22.9	26.7	28.3	23.8
5-YR RELATIVE SURVIVAL RATES, 1996-2004^b									
AGE AT DIAGNOSIS:									
<45	50.0	48.3	51.9	50.9	49.7	52.2	41.8	41.2	42.4
45-54	28.5	28.2	28.8	28.7	27.2	30.5	28.4	31.9 ^e	23.5 ^e
55-64	17.9	15.7	20.6	18.0	15.7	21.1	13.8	14.6	12.4 ^e
65-74	7.4	6.2	9.1	7.3	6.2	8.9	6.2	7.0	0.0
75+	1.8	1.2	2.3	1.8	1.2	2.2	2.5	-	3.3
Under 65	35.8	33.9	38.0	35.8	33.7	38.3	32.6	33.6	30.8
65 and over	4.5	3.8	5.2	4.4	3.8	5.0	4.6	4.9	3.2
CHRONIC MYELOID LEUKEMIA									
5-YR RELATIVE SURVIVAL RATES									
YEAR OF DIAGNOSIS:									
1975-1977 ^a	23.9	21.5	27.1	22.6	20.5	25.5	28.7 ^e	22.6 ^e	36.0 ^e
1978-1980 ^a	25.1	24.1	26.2	25.4	25.0	25.7	22.0 ^e	20.9 ^e	23.6 ^e
1981-1983 ^a	30.5	26.5	35.2	31.1	27.5	35.0	30.2	20.6 ^e	41.3 ^e
1984-1986 ^a	23.8	21.6	26.9	24.4	21.7	28.3	22.2	21.4 ^e	22.6 ^e
1987-1989 ^a	32.2	32.9	31.1	32.1	33.4	30.4	35.7 ^e	30.3 ^e	43.8 ^e
1990-1992 ^a	32.5	31.2	34.1	32.1	32.2	32.0	36.0 ^e	24.3 ^e	48.3 ^e
1993-1995 ^a	37.3	36.9	37.8	37.1	37.2	37.0	35.7 ^e	32.8 ^e	40.5 ^e
1996-2004 ^a	46.7 ^d	45.5 ^d	48.4 ^d	46.3 ^d	44.5 ^d	48.2 ^d	44.0	43.9	43.6 ^e
5-YR PERIOD SURVIVAL RATES^{bc}									
YEAR OF DIAGNOSIS:									
1996-2004	57.7	57.8	57.5	56.0	55.6	56.4	58.9	57.9	59.2
5-YR RELATIVE SURVIVAL RATES, 1996-2004^b									
AGE AT DIAGNOSIS:									
<45	69.8	68.5	71.9	70.3	68.0	74.3	65.0	62.9 ^e	68.3 ^e
45-54	68.6	66.7	70.8	69.2	67.4	71.1	60.6 ^e	56.9 ^e	63.5 ^f
55-64	56.8	55.5	58.5	58.9	56.4	62.8	40.0 ^e	41.6 ^e	35.0 ^f
65-74	33.7	31.6	36.9	32.9	30.0	37.6	30.5 ^e	27.3 ^e	33.1 ^e
75+	20.5	18.5	22.7	20.0	17.4	22.9	19.0 ^e	13.2 ^e	15.5 ^f
Under 65	66.0	64.6	68.1	66.8	64.5	70.2	58.2	57.1	59.1 ^e
65 and over	27.0	25.3	29.0	26.1	23.9	28.9	26.7	23.4 ^e	28.6 ^e

^a Rates are from the SEER 9 areas (San Francisco, Connecticut, Detroit, Hawaii, Iowa, New Mexico, Seattle, Utah, Atlanta). Rates are based on follow-up of patients into 2005.

^b Rates are from the SEER 17 areas (San Francisco, Connecticut, Detroit, Hawaii, Iowa, New Mexico, Seattle, Utah, Atlanta, San Jose-Monterey, Los Angeles, Alaska Native Registry, Rural Georgia, California excluding SF/SJM/LA, Kentucky, Louisiana and New Jersey). California excluding SF/SJM/LA, Kentucky, Louisiana, and New Jersey contribute cases for diagnosis years 2000-2004. The remaining 13 SEER Areas contribute cases for the entire period 1996-2004. Rates are based on follow-up of patients into 2005.

^c Period survival provides a more up-to-date estimate of survival by piecing together the most recent conditional survival estimates from several cohorts. It is computed here using three calendar year blocks (2002-2004: 0-1 year survival), (2001-2003: 1-2 year survival), (2000-2002: 2-3 year survival), (1999-2001: 3-4 year survival), (1998-2000: 4-5 years survival).

^d The difference in rates between 1975-1977 and 1996-2004 is statistically significant ($p < .05$).

^e The standard error of the survival rate is between 5 and 10 percentage points.

^f The standard error of the survival rate is greater than 10 percentage points.

- Statistic could not be calculated due to fewer than 16 cases during the time period.

Table XIV-5
LIVER AND INTRAHEPATIC BILE DUCT CANCER (Invasive)

SURVIVAL RATES, BY RACE, SEX, DIAGNOSIS YEAR, STAGE AND AGE

	All Races			Whites			Blacks		
	Total	Males	Females	Total	Males	Females	Total	Males	Females
5-YR RELATIVE SURVIVAL RATES									
YEAR OF DIAGNOSIS:									
1960-1963 ^a	-	-	-	-	-	-	-	-	-
1970-1973 ^a	-	-	-	-	-	-	-	-	-
1975-1977 ^b	3.7	2.0	6.7	3.7	2.1	6.1	1.9	0.0	5.9
1978-1980 ^b	3.5	2.3	5.5	3.4	2.3	4.8	3.8	3.2	5.1
1981-1983 ^b	4.0	3.3	5.3	4.3	3.5	5.6	3.0	2.1	4.9
1984-1986 ^b	6.0	3.7	10.2	6.0	3.7	10.0	4.5	2.2	9.5
1987-1989 ^b	5.2	3.3	8.7	6.1	3.6	10.2	2.9	1.6	5.1
1990-1992 ^b	5.9	5.1	7.5	6.8	5.6	8.9	2.7	2.0	3.7
1993-1995 ^b	5.8	5.4	6.7	5.5	5.1	6.3	4.2	2.8	7.8
1996-2004 ^b	11.4 ^e	11.0 ^e	12.3 ^e	10.8 ^e	10.0 ^e	12.4 ^e	8.3 ^e	8.3	8.1 ^e
5-YR PERIOD SURVIVAL RATES^{cd}									
YEAR OF DIAGNOSIS:									
1996-2004	13.3	13.4	13.3	12.9	12.9	12.6	9.8	9.3	10.9
STAGE DISTRIBUTION (%) 1996-2004^c									
All Stages									
Number of cases	25,649	17,824	7,825	17,090	11,766	5,324	2,786	1,991	795
Percent	100%	100%	100%	100%	100%	100%	100%	100%	100%
Localized	35	35	34	34	35	33	33	32	34
Regional	25	27	23	24	25	22	27	28	25
Distant	20	20	20	20	20	21	23	23	22
Unstaged	20	19	23	22	20	25	18	18	19
5-YR RELATIVE SURVIVAL RATES, 1996-2004^c									
AGE AT DIAGNOSIS:									
<45	24.5	20.7	33.4	28.3	23.1	38.5	13.9	13.6	15.4 ^f
45-54	15.7	15.0	19.4	17.0	16.2	20.8	8.1	7.2	15.5
55-64	11.8	11.2	13.6	11.8	11.0	14.6	7.9	7.6	7.7
65-74	9.1	8.7	9.8	7.4	6.8	8.5	7.5	7.7	5.7
75+	5.0	4.5	5.3	4.4	3.8	4.8	2.0	-	1.8
Under 65	15.4	14.2	19.6	16.4	14.8	21.8	8.8	8.2	10.7
65 and over	7.3	7.2	7.6	6.1	5.7	6.6	5.7	6.4	4.0
STAGE:									
All Stages	11.7	11.4	12.4	11.4	11.0	12.3	7.9	7.9	7.7
Localized	23.8	23.5	24.3	23.9	23.2	25.1	17.2	18.6	12.6
Regional	7.7	7.4	8.6	7.5	7.1	8.5	3.8	4.1	3.2
Distant	2.9	2.3	4.3	2.6	1.6	4.4	2.7	2.5	3.2
Unstaged	4.9	4.6	5.4	4.6	4.4	4.8	3.9	2.5	7.6

^a Rates are based on End Results data from a series of hospital registries and one population-based registry.

^b Rates are from the SEER 9 areas (San Francisco, Connecticut, Detroit, Hawaii, Iowa, New Mexico, Seattle, Utah, Atlanta).

Rates are based on follow-up of patients into 2005.

^c Rates are from the SEER 17 areas (San Francisco, Connecticut, Detroit, Hawaii, Iowa, New Mexico, Seattle, Utah, Atlanta, San Jose-Monterey, Los Angeles, Alaska Native Registry, Rural Georgia, California excluding SF/SJM/LA, Kentucky, Louisiana and New Jersey). California excluding SF/SJM/LA, Kentucky, Louisiana, and New Jersey contribute cases for diagnosis years 2000-2004. The remaining 13 SEER Areas contribute cases for the entire period 1996-2004. Rates are based on follow-up of patients into 2005.

^d Period survival provides a more up-to-date estimate of survival by piecing together the most recent conditional survival estimates from several cohorts. It is computed here using three calendar year blocks (2002-2004: 0-1 year survival), (2001-2003: 1-2 year survival), (2000-2002: 2-3 year survival), (1999-2001: 3-4 year survival), (1998-2000: 4-5 years survival).

^e The difference in rates between 1975-1977 and 1996-2004 is statistically significant ($p < .05$).

^f The standard error of the survival rate is between 5 and 10 percentage points.

^g The standard error of the survival rate is greater than 10 percentage points.

- Statistic could not be calculated due to fewer than 16 cases during the time period.

Table XV-9
LUNG AND BRONCHUS CANCER (Invasive)

SURVIVAL RATES, BY RACE, SEX, DIAGNOSIS YEAR, STAGE AND AGE

	All Races			Whites			Blacks		
	Total	Males	Females	Total	Males	Females	Total	Males	Females
5-YR RELATIVE SURVIVAL RATES									
YEAR OF DIAGNOSIS:									
1960-1963 ^a	-	-	-	8	7	11	5	5	6
1970-1973 ^a	-	-	-	10	9	14	7	6	10
1975-1977 ^b	12.7	11.5	15.8	12.8	11.5	15.9	11.4	10.6	14.0
1978-1980 ^b	13.3	11.8	16.7	13.4	12.0	16.6	12.0	10.0	17.9
1981-1983 ^b	13.7	12.1	16.9	13.9	12.3	17.1	11.7	10.5	15.1
1984-1986 ^b	13.3	11.6	16.4	13.5	11.7	16.7	11.4	10.6	13.0
1987-1989 ^b	13.5	12.4	15.4	13.8	12.5	15.8	11.2	11.1	11.4
1990-1992 ^b	14.1	12.6	16.3	14.5	13.0	16.6	10.8	9.6	12.8
1993-1995 ^b	14.8	12.9	17.4	15.1	13.1	17.7	13.0	11.5	15.8
1996-2004 ^b	15.7 ^e	13.5 ^e	18.2 ^e	15.9 ^e	13.7 ^e	18.4 ^e	12.7 ^e	11.0	15.1
5-YR PERIOD SURVIVAL RATES^{cd}									
YEAR OF DIAGNOSIS:									
1996-2004	15.5	13.3	17.9	15.8	13.6	18.2	12.1	10.4	14.4
STAGE DISTRIBUTION (%) 1996-2004^c									
All Stages									
Number of cases	244,474	134,234	110,240	203,259	109,417	93,842	25,770	15,347	10,423
Percent	100%	100%	100%	100%	100%	100%	100%	100%	100%
Localized	16	15	18	16	15	18	14	12	15
Regional	25	26	24	25	26	25	25	26	25
Distant	51	53	50	51	52	49	55	56	54
Unstaged	8	7	8	8	7	8	6	6	7
5-YR RELATIVE SURVIVAL RATES, 1996-2004^c									
AGE AT DIAGNOSIS:									
<45	23.4	20.8	26.1	25.6	23.6	27.6	15.5	12.0	19.5
45-54	18.1	14.7	22.4	18.8	15.0	23.4	13.8	11.5	17.5
55-64	17.3	14.8	20.7	17.9	15.3	21.1	13.3	11.3	16.8
65-74	15.2	13.1	17.7	15.4	13.2	17.9	11.3	10.0	13.0
75+	10.7	9.4	11.9	10.8	9.5	12.1	8.3	7.0	9.4
Under 65	18.0	15.2	21.7	18.7	15.8	22.3	13.7	11.4	17.4
65 and over	13.3	11.6	15.1	13.5	11.8	15.3	10.2	9.1	11.7
STAGE:									
All Stages	15.2	13.1	17.6	15.5	13.4	17.9	12.1	10.4	14.5
Localized	49.5	44.7	54.0	50.1	45.5	54.3	41.2	37.0	46.1
Regional	20.6	18.8	22.7	20.7	19.0	22.7	17.5	15.5	20.4
Distant	2.8	2.4	3.3	2.7	2.3	3.2	2.7	2.4	3.2
Unstaged	8.3	7.7	8.9	7.8	7.3	8.4	9.3	8.6	10.1

^a Rates are based on End Results data from a series of hospital registries and one population-based registry.

^b Rates are from the SEER 9 areas (San Francisco, Connecticut, Detroit, Hawaii, Iowa, New Mexico, Seattle, Utah, Atlanta).

Rates are based on follow-up of patients into 2005.

^c Rates are from the SEER 17 areas (San Francisco, Connecticut, Detroit, Hawaii, Iowa, New Mexico, Seattle, Utah, Atlanta, San Jose-Monterey, Los Angeles, Alaska Native Registry, Rural Georgia, California excluding SF/SJM/LA, Kentucky, Louisiana and New Jersey). California excluding SF/SJM/LA, Kentucky, Louisiana, and New Jersey contribute cases for diagnosis years 2000-2004. The remaining 13 SEER Areas contribute cases for the entire period 1996-2004. Rates are based on follow-up of patients into 2005.

^d Period survival provides a more up-to-date estimate of survival by piecing together the most recent conditional survival estimates from several cohorts. It is computed here using three calendar year blocks (2002-2004: 0-1 year survival), (2001-2003: 1-2 year survival), (2000-2002: 2-3 year survival), (1999-2001: 3-4 year survival), (1998-2000: 4-5 years survival).

^e The difference in rates between 1975-1977 and 1996-2004 is statistically significant ($p < .05$).

^f The standard error of the survival rate is between 5 and 10 percentage points.

^g The standard error of the survival rate is greater than 10 percentage points.

- Statistic could not be calculated due to fewer than 16 cases during the time period.

Table XV-10
SMALL CELL LUNG AND BRONCHUS CANCER (Invasive)

SURVIVAL RATES, BY RACE, SEX, DIAGNOSIS YEAR, STAGE AND AGE

	All Races			Whites			Blacks		
	Total	Males	Females	Total	Males	Females	Total	Males	Females
5-YR RELATIVE SURVIVAL RATES									
YEAR OF DIAGNOSIS:									
1975-1977 ^a	3.7	3.2	4.8	3.8	3.2	4.9	3.8	3.9	3.6
1978-1980 ^a	4.4	3.3	6.6	4.5	3.5	6.6	3.2	2.4	5.0
1981-1983 ^a	4.8	3.8	6.4	4.8	3.9	6.2	5.6	4.3	8.5
1984-1986 ^a	4.7	3.5	6.5	4.9	3.7	6.7	3.6	2.3	5.6
1987-1989 ^a	5.2	4.0	6.7	5.3	4.0	6.9	4.0	3.4	4.7
1990-1992 ^a	5.6	4.8	6.6	5.7	4.8	6.8	4.2	4.4	3.9
1993-1995 ^a	6.6	5.4	8.0	6.5	5.3	7.8	6.9	4.6	9.9
1996-2004 ^a	6.2 ^d	5.2 ^d	7.3 ^d	6.3 ^d	5.1 ^d	7.5 ^d	4.6	4.3 ^d	4.9
5-YR PERIOD SURVIVAL RATES^{bc}									
YEAR OF DIAGNOSIS:									
1996-2004	5.9	5.1	6.7	5.9	5.0	6.7	4.6	4.0	5.0
STAGE DISTRIBUTION (%) 1996-2004^b									
All Stages									
Number of cases	34,022	17,520	16,502	29,767	15,042	14,725	2,722	1,461	1,261
Percent	100%	100%	100%	100%	100%	100%	100%	100%	100%
Localized	6	6	6	6	5	6	6	6	6
Regional	24	22	26	24	22	26	25	24	25
Distant	66	68	63	66	68	63	65	66	65
Unstaged	5	4	5	5	4	5	4	4	4
5-YR RELATIVE SURVIVAL RATES, 1996-2004^b									
AGE AT DIAGNOSIS:									
<45	8.9	7.8	10.0	9.8	8.1	11.5	2.0	3.6	0.0
45-54	8.7	6.7	11.1	8.9	7.1	11.1	6.4	3.7	9.7
55-64	7.5	6.1	9.0	7.5	6.0	9.2	5.2	5.3	5.1
65-74	5.1	4.4	5.7	5.0	4.2	5.8	3.7	4.3	3.0
75+	3.0	2.5	3.4	3.1	2.7	3.4	1.6	1.0	2.4
Under 65	7.9	6.3	9.6	8.0	6.4	9.8	5.3	4.5	6.3
65 and over	4.3	3.8	4.8	4.3	3.7	4.9	3.1	3.4	2.9
STAGE:									
All Stages	5.9	5.0	6.8	5.9	4.9	6.9	4.2	4.0	4.5
Localized	19.5	17.7	21.1	19.2	17.7	20.5	15.8	16.9 ^e	15.1 ^e
Regional	12.5	11.1	13.7	12.9	11.3	14.2	8.2	8.6	7.6
Distant	2.2	1.9	2.5	2.2	1.8	2.6	1.6	1.2	2.0
Unstaged	6.4	5.4	7.2	6.4	5.7	6.8	6.0	3.4	8.8

^a Rates are from the SEER 9 areas (San Francisco, Connecticut, Detroit, Hawaii, Iowa, New Mexico, Seattle, Utah, Atlanta).

Rates are based on follow-up of patients into 2005.

^b Rates are from the SEER 17 areas (San Francisco, Connecticut, Detroit, Hawaii, Iowa, New Mexico, Seattle, Utah, Atlanta, San Jose-Monterey, Los Angeles, Alaska Native Registry, Rural Georgia, California excluding SF/SJM/LA, Kentucky, Louisiana and New Jersey). California excluding SF/SJM/LA, Kentucky, Louisiana, and New Jersey contribute cases for diagnosis years 2000-2004. The remaining 13 SEER Areas contribute cases for the entire period 1996-2004. Rates are based on follow-up of patients into 2005.

^c Period survival provides a more up-to-date estimate of survival by piecing together the most recent conditional survival estimates from several cohorts. It is computed here using three calendar year blocks (2002-2004: 0-1 year survival), (2001-2003: 1-2 year survival), (2000-2002: 2-3 year survival), (1999-2001: 3-4 year survival), (1998-2000: 4-5 years survival).

^d The difference in rates between 1975-1977 and 1996-2004 is statistically significant ($p < .05$).

^e The standard error of the survival rate is between 5 and 10 percentage points.

^f The standard error of the survival rate is greater than 10 percentage points.

- Statistic could not be calculated due to fewer than 16 cases during the time period.

Table XV-11
NON-SMALL CELL LUNG AND BRONCHUS CANCER (Invasive)

SURVIVAL RATES, BY RACE, SEX, DIAGNOSIS YEAR, STAGE AND AGE

	All Races			Whites			Blacks		
	Total	Males	Females	Total	Males	Females	Total	Males	Females
5-YR RELATIVE SURVIVAL RATES									
YEAR OF DIAGNOSIS:									
1975-1977 ^a	14.2	12.7	17.9	14.3	12.8	18.1	12.4	11.3	16.2
1978-1980 ^a	15.0	13.4	18.8	15.2	13.6	18.9	13.2	10.9	19.9
1981-1983 ^a	15.6	13.7	19.5	16.0	14.0	19.9	12.5	11.3	16.1
1984-1986 ^a	15.1	13.2	18.8	15.5	13.4	19.3	12.6	11.8	14.6
1987-1989 ^a	15.3	14.0	17.6	15.7	14.2	18.1	12.3	12.1	12.6
1990-1992 ^a	15.8	14.0	18.6	16.4	14.6	19.1	11.6	10.2	14.3
1993-1995 ^a	16.4	14.2	19.5	16.8	14.5	20.0	13.8	12.3	16.7
1996-2004 ^a	17.3 ^d	14.9 ^d	20.3 ^d	17.7 ^d	15.2 ^d	20.7 ^d	13.7 ^d	11.7	16.6
5-YR PERIOD SURVIVAL RATES^{bc}									
YEAR OF DIAGNOSIS:									
1996-2004	17.1	14.6	19.9	17.5	15.0	20.4	13.0	11.1	15.5
STAGE DISTRIBUTION (%) 1996-2004^b									
All Stages									
Number of cases	210,452	116,714	93,738	173,492	94,375	79,117	23,048	13,886	9,162
Percent	100%	100%	100%	100%	100%	100%	100%	100%	100%
Localized	18	16	20	18	16	20	14	13	16
Regional	25	26	24	25	26	24	25	26	24
Distant	49	50	48	48	49	46	54	55	52
Unstaged	8	8	9	8	8	9	7	6	7
5-YR RELATIVE SURVIVAL RATES, 1996-2004^b									
AGE AT DIAGNOSIS:									
<45	25.2	22.5	28.1	27.9	25.8	29.9	16.6	12.7	21.0
45-54	19.7	16.0	24.6	20.7	16.5	26.0	14.7	12.3	18.5
55-64	19.3	16.4	23.3	20.1	17.2	24.0	14.3	11.9	18.5
65-74	17.0	14.5	20.1	17.3	14.7	20.5	12.3	10.6	14.6
75+	11.7	10.2	13.1	11.9	10.4	13.3	9.0	7.6	10.2
Under 65	19.9	16.7	24.2	20.9	17.6	25.1	14.7	12.2	18.8
65 and over	14.7	12.8	16.9	15.0	13.0	17.2	11.1	9.7	12.9
STAGE:									
All Stages	16.8	14.4	19.6	17.2	14.8	20.0	13.0	11.1	15.9
Localized	51.2	46.2	55.9	51.9	47.0	56.3	42.4	37.9	47.6
Regional	21.8	19.8	24.4	22.0	20.0	24.5	18.5	16.2	22.1
Distant	2.9	2.5	3.5	2.8	2.4	3.4	2.9	2.5	3.4
Unstaged	8.5	7.9	9.1	8.0	7.4	8.6	9.6	9.0	10.1

^a Rates are from the SEER 9 areas (San Francisco, Connecticut, Detroit, Hawaii, Iowa, New Mexico, Seattle, Utah, Atlanta).

Rates are based on follow-up of patients into 2005.

^b Rates are from the SEER 17 areas (San Francisco, Connecticut, Detroit, Hawaii, Iowa, New Mexico, Seattle, Utah, Atlanta, San Jose-Monterey, Los Angeles, Alaska Native Registry, Rural Georgia, California excluding SF/SJM/LA, Kentucky, Louisiana and New Jersey). California excluding SF/SJM/LA, Kentucky, Louisiana, and New Jersey contribute cases for diagnosis years 2000-2004. The remaining 13 SEER Areas contribute cases for the entire period 1996-2004. Rates are based on follow-up of patients into 2005.

^c Period survival provides a more up-to-date estimate of survival by piecing together the most recent conditional survival estimates from several cohorts. It is computed here using three calendar year blocks (2002-2004: 0-1 year survival), (2001-2003: 1-2 year survival), (2000-2002: 2-3 year survival), (1999-2001: 3-4 year survival), (1998-2000: 4-5 years survival).

^d The difference in rates between 1975-1977 and 1996-2004 is statistically significant ($p < .05$).

^e The standard error of the survival rate is between 5 and 10 percentage points.

^f The standard error of the survival rate is greater than 10 percentage points.

- Statistic could not be calculated due to fewer than 16 cases during the time period.

Table XVI-5
MELANOMA OF THE SKIN (Invasive)

SURVIVAL RATES, BY RACE, SEX, DIAGNOSIS YEAR, STAGE AND AGE

	All Races			Whites			Blacks		
	Total	Males	Females	Total	Males	Females	Total	Males	Females
5-YR RELATIVE SURVIVAL RATES									
YEAR OF DIAGNOSIS:									
1960-1963 ^a	-	-	-	60	51	68	-	-	-
1970-1973 ^a	-	-	-	68	62	75	-	-	-
1975-1977 ^b	82.4	77.9	86.8	82.4	78.0	86.7	59.7 ^f	47.7 ^g	68.1 ^g
1978-1980 ^b	83.2	78.2	88.1	83.3	78.3	88.2	59.7 ^g	-	69.5 ^g
1981-1983 ^b	83.4	79.0	87.8	83.3	78.9	87.7	60.8 ^g	51.5 ^g	68.3 ^g
1984-1986 ^b	86.9	82.7	91.3	86.6	82.3	91.1	69.7 ^g	-	71.7 ^g
1987-1989 ^b	88.5	85.4	91.7	88.3	85.3	91.4	79.9 ^f	61.7 ^g	90.4 ^f
1990-1992 ^b	89.6	87.3	92.1	89.6	87.3	92.1	60.3 ^f	53.3 ^g	68.0 ^g
1993-1995 ^b	89.8	87.2	92.8	89.7	87.0	92.8	66.8 ^f	65.4 ^g	66.9 ^g
1996-2004 ^b	92.2 ^e	90.4 ^e	94.2 ^e	92.1 ^e	90.2 ^e	94.2 ^e	77.9	74.6 ^f	79.7 ^f
5-YR PERIOD SURVIVAL RATES^{cd}									
YEAR OF DIAGNOSIS:									
1996-2004	91.4	89.2	94.0	91.2	88.9	93.9	77.4	73.3	78.4
STAGE DISTRIBUTION (%) 1996-2004^c									
All Stages									
Number of cases	73,856	40,764	33,092	69,733	38,657	31,076	368	168	200
Percent	100%	100%	100%	100%	100%	100%	100%	100%	100%
Localized	81	79	83	81	78	83	58	53	63
Regional	12	13	10	12	13	10	24	24	24
Distant	4	4	2	4	4	2	12	17	8
Unstaged	4	4	4	4	4	4	6	7	6
5-YR RELATIVE SURVIVAL RATES, 1996-2004^c									
AGE AT DIAGNOSIS:									
<45	93.6	90.1	96.2	93.4	89.8	96.1	73.4	69.5 ^f	75.3 ^f
45-54	91.5	89.1	94.5	91.2	88.7	94.3	85.7 ^f	92.3 ^f	78.9 ^g
55-64	91.0	89.5	93.6	90.7	89.1	93.4	83.8 ^f	73.6 ^f	91.0 ^f
65-74	90.5	89.8	91.7	90.3	89.6	91.5	75.0 ^f	62.5 ^g	82.4 ^f
75+	84.5	83.8	85.0	84.2	83.5	84.7	55.8 ^g	45.1 ^g	64.8 ^g
Under 65	92.3	89.6	95.1	92.0	89.2	95.0	80.0	77.2 ^f	81.3
65 and over	88.3	87.8	89.0	88.1	87.6	88.8	68.1 ^f	56.4 ^g	75.0 ^f
STAGE:									
All Stages	91.2	89.1	93.7	90.9	88.8	93.5	76.7	71.2	81.0
Localized	98.7	98.3	99.2	98.5	98.1	99.1	95.2	93.8 ^f	96.1
Regional	65.1	61.8	70.2	65.3	61.8	70.6	46.8 ^f	54.5 ^g	34.9 ^g
Distant	15.5	15.1	16.4	15.0	14.9	15.2	23.8 ^f	13.1 ^f	-
Unstaged	77.4	74.8	80.5	76.3	73.8	79.3	61.6 ^g	-	-

^a Rates are based on End Results data from a series of hospital registries and one population-based registry.

^b Rates are from the SEER 9 areas (San Francisco, Connecticut, Detroit, Hawaii, Iowa, New Mexico, Seattle, Utah, Atlanta).

Rates are based on follow-up of patients into 2005.

^c Rates are from the SEER 17 areas (San Francisco, Connecticut, Detroit, Hawaii, Iowa, New Mexico, Seattle, Utah, Atlanta, San Jose-Monterey, Los Angeles, Alaska Native Registry, Rural Georgia, California excluding SF/SJM/LA, Kentucky, Louisiana and New Jersey). California excluding SF/SJM/LA, Kentucky, Louisiana, and New Jersey contribute cases for diagnosis years 2000-2004. The remaining 13 SEER Areas contribute cases for the entire period 1996-2004. Rates are based on follow-up of patients into 2005.

^d Period survival provides a more up-to-date estimate of survival by piecing together the most recent conditional survival estimates from several cohorts. It is computed here using three calendar year blocks (2002-2004: 0-1 year survival), (2001-2003: 1-2 year survival), (2000-2002: 2-3 year survival), (1999-2001: 3-4 year survival), (1998-2000: 4-5 years survival).

^e The difference in rates between 1975-1977 and 1996-2004 is statistically significant ($p < .05$).

^f The standard error of the survival rate is between 5 and 10 percentage points.

^g The standard error of the survival rate is greater than 10 percentage points.

- Statistic could not be calculated due to fewer than 16 cases during the time period.

Table XVII-4
MESOTHELIOMA

SURVIVAL RATES, BY RACE, SEX, DIAGNOSIS YEAR, STAGE AND AGE

	All Races			Whites			Blacks		
	Total	Males	Females	Total	Males	Females	Total	Males	Females
<u>5-YR RELATIVE SURVIVAL RATES</u>									
YEAR OF DIAGNOSIS:									
1960-1963 ^a	-	-	-	-	-	-	-	-	-
1970-1973 ^a	-	-	-	-	-	-	-	-	-
1975-1977 ^b	10.4	3.1	27.9 ^f	11.1	3.6	28.5 ^f	-	-	-
1978-1980 ^b	6.3	5.8	8.3	6.1	5.4	8.9	6.9 ^f	-	-
1981-1983 ^b	8.3	5.7	15.6	8.7	5.8	16.7	5.9 ^f	7.6 ^f	-
1984-1986 ^b	7.3	5.0	14.7	6.8	4.3	14.9	11.8 ^f	14.9 ^f	-
1987-1989 ^b	6.6	4.8	13.0	6.7	4.9	13.1	4.5	0.0	-
1990-1992 ^b	8.5	4.7	21.9	8.1	4.3	21.3	12.9 ^f	12.0 ^f	-
1993-1995 ^b	7.0	3.5	19.6	6.3	3.0	18.9	9.5 ^f	8.4 ^f	-
1996-2004 ^b	8.5	6.7	14.5 ^e	8.2	6.4 ^e	14.5	14.9 ^f	13.2 ^f	16.3 ^f
<u>5-YR PERIOD SURVIVAL RATES^{cd}</u>									
YEAR OF DIAGNOSIS:									
1996-2004	8.0	6.2	13.3	7.3	5.7	12.4	14.5	10.0	-
<u>5-YR RELATIVE SURVIVAL RATES, 1996-2004^c</u>									
AGE AT DIAGNOSIS:									
<45	38.4	32.8 ^f	44.8 ^f	36.1	32.1 ^f	41.1 ^f	-	-	-
45-54	16.6	11.6	24.6	15.8	11.0	23.7	34.7 ^g	-	-
55-64	9.4	7.3	17.7	8.6	6.5	18.0	13.9 ^f	9.4 ^f	-
65-74	5.1	5.1	5.6	5.2	5.0	6.3	5.8	5.3	-
75+	3.8	3.6	4.3	3.7	3.4	4.6	3.5	5.0 ^f	-
Under 65	15.3	10.7	26.8	14.3	9.9	26.1	23.8 ^f	15.3 ^f	39.1 ^g
65 and over	4.5	4.4	4.8	4.5	4.2	5.3	5.3	6.4	0.0

- ^a Rates are based on End Results data from a series of hospital registries and one population-based registry.
- ^b Rates are from the SEER 9 areas (San Francisco, Connecticut, Detroit, Hawaii, Iowa, New Mexico, Seattle, Utah, Atlanta).
- ^c Rates are based on follow-up of patients into 2005.
- ^d Rates are from the SEER 17 areas (San Francisco, Connecticut, Detroit, Hawaii, Iowa, New Mexico, Seattle, Utah, Atlanta, San Jose-Monterey, Los Angeles, Alaska Native Registry, Rural Georgia, California excluding SF/SJM/LA, Kentucky, Louisiana and New Jersey). California excluding SF/SJM/LA, Kentucky, Louisiana, and New Jersey contribute cases for diagnosis years 2000-2004. The remaining 13 SEER Areas contribute cases for the entire period 1996-2004. Rates are based on follow-up of patients into 2005.
- ^e Period survival provides a more up-to-date estimate of survival by piecing together the most recent conditional survival estimates from several cohorts. It is computed here using three calendar year blocks (2002-2004: 0-1 year survival), (2001-2003: 1-2 year survival), (2000-2002: 2-3 year survival), (1999-2001: 3-4 year survival), (1998-2000: 4-5 years survival).
- ^f The difference in rates between 1975-1977 and 1996-2004 is statistically significant (p<.05).
- ^g The standard error of the survival rate is between 5 and 10 percentage points.
- The standard error of the survival rate is greater than 10 percentage points.
- Statistic could not be calculated due to fewer than 16 cases during the time period.

Table XVIII-5
MYELOMA

SURVIVAL RATES, BY RACE, SEX, DIAGNOSIS YEAR AND AGE

	All Races			Whites			Blacks		
	Total	Males	Females	Total	Males	Females	Total	Males	Females
<u>5-YR RELATIVE SURVIVAL RATES</u>									
YEAR OF DIAGNOSIS:									
1960-1963 ^a	-	-	-	12	13	10	-	-	-
1970-1973 ^a	-	-	-	19	20	17	-	-	-
1975-1977 ^b	25.9	25.5	26.3	25.4	25.1	25.8	30.7	31.6	29.7
1978-1980 ^b	27.0	25.6	28.5	26.1	25.6	26.6	32.5	26.9	37.9
1981-1983 ^b	28.7	26.8	30.7	28.5	26.7	30.3	29.6	30.3	28.8
1984-1986 ^b	28.5	29.1	27.9	27.4	27.3	27.4	32.4	34.0	30.6
1987-1989 ^b	28.5	30.2	26.8	28.2	30.5	25.8	31.0	30.7	31.3
1990-1992 ^b	30.5	31.7	29.2	29.6	30.7	28.5	35.6	40.1	31.5
1993-1995 ^b	32.8	33.5	32.1	31.8	32.7	30.8	35.6	34.8	36.0
1996-2004 ^b	34.6 ^e	36.7 ^e	32.2 ^e	34.7 ^e	36.9 ^e	32.0 ^e	32.8	35.3	30.7
<u>5-YR PERIOD SURVIVAL RATES^{cd}</u>									
YEAR OF DIAGNOSIS:									
1996-2004	35.9	37.0	34.7	35.7	37.2	33.9	34.4	34.7	34.1
<u>5-YR RELATIVE SURVIVAL RATES, 1996-2004^c</u>									
AGE AT DIAGNOSIS:									
<45	56.7	58.5	53.7	58.3	60.4	54.1	51.8	51.5 ^f	51.9 ^f
45-54	51.7	51.3	52.1	53.3	53.6	52.7	45.4	41.0	50.1
55-64	40.6	41.1	39.9	41.8	42.1	41.4	35.5	36.5	34.3
65-74	32.5	32.5	32.5	32.4	31.9	32.9	31.3	32.4	30.3
75+	19.4	18.5	20.1	19.0	17.9	19.8	19.2	18.3	19.2
Under 65	46.5	47.0	45.7	47.7	48.5	46.5	41.6	40.4	42.9
65 and over	26.2	26.6	25.9	25.8	25.9	25.7	26.3	27.9	25.0

^a Rates are based on End Results data from a series of hospital registries and one population-based registry.

^b Rates are from the SEER 9 areas (San Francisco, Connecticut, Detroit, Hawaii, Iowa, New Mexico, Seattle, Utah, Atlanta).

Rates are based on follow-up of patients into 2005.

^c Rates are from the SEER 17 areas (San Francisco, Connecticut, Detroit, Hawaii, Iowa, New Mexico, Seattle, Utah, Atlanta, San Jose-Monterey, Los Angeles, Alaska Native Registry, Rural Georgia, California excluding SF/SJM/LA, Kentucky, Louisiana and New Jersey). California excluding SF/SJM/LA, Kentucky, Louisiana, and New Jersey contribute cases for diagnosis years 2000-2004. The remaining 13 SEER Areas contribute cases for the entire period 1996-2004. Rates are based on follow-up of patients into 2005.

^d Period survival provides a more up-to-date estimate of survival by piecing together the most recent conditional survival estimates from several cohorts. It is computed here using three calendar year blocks (2002-2004: 0-1 year survival), (2001-2003: 1-2 year survival), (2000-2002: 2-3 year survival), (1999-2001: 3-4 year survival), (1998-2000: 4-5 years survival).

^e The difference in rates between 1975-1977 and 1996-2004 is statistically significant ($p < .05$).

^f The standard error of the survival rate is between 5 and 10 percentage points.

^g The standard error of the survival rate is greater than 10 percentage points.

- Statistic could not be calculated due to fewer than 16 cases during the time period.

Table XIX-5
NON-HODGKIN LYMPHOMA

SURVIVAL RATES, BY RACE, SEX, DIAGNOSIS YEAR AND AGE

	<u>All Races</u>			<u>Whites</u>			<u>Blacks</u>		
	<u>Total</u>	<u>Males</u>	<u>Females</u>	<u>Total</u>	<u>Males</u>	<u>Females</u>	<u>Total</u>	<u>Males</u>	<u>Females</u>
<u>5-YR RELATIVE SURVIVAL RATES</u>									
YEAR OF DIAGNOSIS:									
1960-1963 ^a	-	-	-	31	31	31	-	-	-
1970-1973 ^a	-	-	-	41	39	43	-	-	-
1975-1977 ^b	47.9	46.8	49.0	48.3	47.8	48.9	48.8	42.0	56.1 ^f
1978-1980 ^b	49.9	47.9	51.9	50.0	48.2	51.7	52.3	48.0	58.1 ^f
1981-1983 ^b	52.5	52.2	52.9	52.8	52.5	53.2	50.4	49.5	51.5
1984-1986 ^b	53.3	51.4	55.4	53.7	52.0	55.6	47.7	44.9	51.3
1987-1989 ^b	52.4	48.7	56.9	52.8	49.2	57.2	47.4	42.2	53.7
1990-1992 ^b	51.9	47.4	57.8	52.9	48.3	58.8	42.0	38.1	47.5
1993-1995 ^b	53.6	49.3	59.4	54.5	50.4	59.7	42.0	35.3	54.8
1996-2004 ^b	64.9 ^e	62.7 ^e	67.4 ^e	65.9 ^e	63.9 ^e	68.1 ^e	57.6	53.9	62.4
<u>5-YR PERIOD SURVIVAL RATES^{cd}</u>									
YEAR OF DIAGNOSIS:									
1996-2004	67.2	64.9	69.9	67.9	65.7	70.5	59.0	54.5	64.4
<u>5-YR RELATIVE SURVIVAL RATES, 1996-2004^c</u>									
AGE AT DIAGNOSIS:									
<45	71.3	67.2	78.6	73.4	69.1	81.3	57.0	52.9	63.9
45-54	73.0	68.7	79.3	74.7	70.5	81.0	58.3	52.4	66.5
55-64	69.6	65.8	74.4	70.4	66.9	74.8	60.7	53.2	68.8
65-74	61.5	57.6	65.5	62.1	57.9	66.3	53.2	48.5	57.5
75+	49.2	47.5	50.3	49.8	47.8	51.2	41.9	46.6 ^f	38.1
Under 65	71.3	67.3	77.2	72.7	68.9	78.6	58.4	53.0	66.1
65 and over	55.7	53.4	57.8	56.3	53.6	58.5	48.7	48.0	48.8

^a Rates are based on End Results data from a series of hospital registries and one population-based registry.

^b Rates are from the SEER 9 areas (San Francisco, Connecticut, Detroit, Hawaii, Iowa, New Mexico, Seattle, Utah, Atlanta).

Rates are based on follow-up of patients into 2005.

^c Rates are from the SEER 17 areas (San Francisco, Connecticut, Detroit, Hawaii, Iowa, New Mexico, Seattle, Utah, Atlanta, San Jose-Monterey, Los Angeles, Alaska Native Registry, Rural Georgia, California excluding SF/SJM/LA, Kentucky, Louisiana and New Jersey). California excluding SF/SJM/LA, Kentucky, Louisiana, and New Jersey contribute cases for diagnosis years 2000-2004. The remaining 13 SEER Areas contribute cases for the entire period 1996-2004. Rates are based on follow-up of patients into 2005.

^d Period survival provides a more up-to-date estimate of survival by piecing together the most recent conditional survival estimates from several cohorts. It is computed here using three calendar year blocks (2002-2004: 0-1 year survival), (2001-2003: 1-2 year survival), (2000-2002: 2-3 year survival), (1999-2001: 3-4 year survival), (1998-2000: 4-5 years survival).

^e The difference in rates between 1975-1977 and 1996-2004 is statistically significant ($p < .05$).

^f The standard error of the survival rate is between 5 and 10 percentage points.

^g The standard error of the survival rate is greater than 10 percentage points.

- Statistic could not be calculated due to fewer than 16 cases during the time period.

Table XX-5a
 CANCER OF THE ORAL CAVITY AND PHARYNX (Invasive)

SURVIVAL RATES, BY RACE, SEX, DIAGNOSIS YEAR, STAGE AND AGE

	All Races			Whites			Blacks		
	Total	Males	Females	Total	Males	Females	Total	Males	Females
<u>5-YR RELATIVE SURVIVAL RATES</u>									
YEAR OF DIAGNOSIS:									
1960-1963 ^a	-	-	-	45	-	-	-	-	-
1970-1973 ^a	-	-	-	43	-	-	-	-	-
1975-1977 ^b	53.1	51.9	55.8	54.6	54.1	55.9	36.4	30.0	48.9
1978-1980 ^b	54.0	52.4	57.4	56.1	55.1	58.2	35.1	29.9	46.2
1981-1983 ^b	52.6	51.1	56.0	55.0	53.8	57.5	31.8	26.4	45.7
1984-1986 ^b	54.6	52.0	59.8	56.8	55.2	60.1	35.7	29.8	50.3
1987-1989 ^b	54.2	51.4	60.0	56.6	54.4	61.1	34.4	30.1	44.8
1990-1992 ^b	56.2	53.8	61.3	58.7	57.0	62.3	33.3	28.3	46.8
1993-1995 ^b	58.4	56.7	61.8	60.9	60.0	62.6	38.2	32.8	51.8
1996-2004 ^b	60.4 ^e	58.9 ^e	63.6 ^e	62.4 ^e	61.7 ^e	64.0 ^e	41.7 ^e	36.0 ^e	54.9
<u>5-YR PERIOD SURVIVAL RATES^{cd}</u>									
YEAR OF DIAGNOSIS:									
1996-2004	60.9	59.3	64.3	62.6	61.8	64.4	43.7	39.0	55.0
<u>STAGE DISTRIBUTION (%) 1996-2004^c</u>									
All Stages									
Number of cases	42,748	29,346	13,402	34,451	23,723	10,728	4,335	3,075	1,260
Percent	100%	100%	100%	100%	100%	100%	100%	100%	100%
Localized	33	29	41	35	31	42	20	17	30
Regional	51	55	45	50	53	43	58	61	51
Distant	10	11	9	10	10	9	17	18	14
Unstaged	5	5	6	5	5	6	5	5	5
<u>5-YR RELATIVE SURVIVAL RATES, 1996-2004^c</u>									
AGE AT DIAGNOSIS:									
<45	76.6	72.9	83.5	79.3	76.4	84.9	61.1	53.7	72.1
45-54	63.7	62.1	68.5	67.8	66.7	71.4	38.3	35.5	46.5
55-64	58.6	56.9	63.4	61.0	59.4	65.4	37.6	35.6	44.5
65-74	53.9	52.6	56.5	55.7	55.4	56.4	31.3	25.7	44.4
75+	47.5	46.7	48.2	48.5	48.2	48.7	36.8	26.7	49.4 ^f
Under 65	64.4	62.0	70.7	67.1	65.3	72.3	43.1	38.9	54.1
65 and over	51.4	50.6	52.7	52.9	52.9	52.8	33.0	26.1	46.6
STAGE:									
All Stages	59.7	58.3	62.7	61.6	61.0	62.9	40.7	36.1	52.1
Localized	82.2	81.5	83.2	82.6	82.7	82.5	72.8	64.9	83.2
Regional	52.7	53.1	51.6	54.7	55.8	51.5	35.0	32.6	41.7
Distant	28.4	27.4	31.0	29.1	28.1	31.7	22.4	22.1	23.7
Unstaged	47.7	46.0	51.0	47.0	46.1	48.5	34.1	29.3	43.6 ^f

^a Rates are based on End Results data from a series of hospital registries and one population-based registry.

^b Rates are from the SEER 9 areas (San Francisco, Connecticut, Detroit, Hawaii, Iowa, New Mexico, Seattle, Utah, Atlanta).

Rates are based on follow-up of patients into 2005.

^c Rates are from the SEER 17 areas (San Francisco, Connecticut, Detroit, Hawaii, Iowa, New Mexico, Seattle, Utah, Atlanta, San Jose-Monterey, Los Angeles, Alaska Native Registry, Rural Georgia, California excluding SF/SJM/LA, Kentucky, Louisiana and New Jersey). California excluding SF/SJM/LA, Kentucky, Louisiana, and New Jersey contribute cases for diagnosis years 2000-2004. The remaining 13 SEER Areas contribute cases for the entire period 1996-2004. Rates are based on follow-up of patients into 2005.

^d Period survival provides a more up-to-date estimate of survival by piecing together the most recent conditional survival estimates from several cohorts. It is computed here using three calendar year blocks (2002-2004: 0-1 year survival), (2001-2003: 1-2 year survival), (2000-2002: 2-3 year survival), (1999-2001: 3-4 year survival), (1998-2000: 4-5 years survival).

^e The difference in rates between 1975-1977 and 1996-2004 is statistically significant ($p < .05$).

^f The standard error of the survival rate is between 5 and 10 percentage points.

^g The standard error of the survival rate is greater than 10 percentage points.

- Statistic could not be calculated due to fewer than 16 cases during the time period.

Table XX-6b
 CANCER OF THE ORAL CAVITY AND PHARYNX FOR SELECTED SUBSITES (Invasive)

SURVIVAL RATES^a

By Year of Diagnosis

All Races, Males and Females

Year of Diagnosis

	1975- 1979	1980- 1984	1985	1986	1987	1988	1989	1990	1991	1992	1993	1994	1995	1996	1997	1998	1999	2000	2001	2002	2003	2004
Relative Survival Rates (SEER ^b)																						
<u>Tongue Cancer</u>																						
1-year	75.3	74.4	80.7	76.7	78.4	77.3	76.0	80.3	82.2	77.3	82.0	82.2	80.4	79.9	82.5	80.2	82.2	85.5	82.4	81.9	85.2	87.3
2-year	55.5	58.1	63.8	59.8	61.3	59.4	59.8	64.6	67.2	60.6	65.8	68.8	65.9	67.1	71.3	66.3	68.8	72.1	71.6	69.2	71.6	
3-year	48.1	51.4	57.5	56.3	55.4	51.1	54.4	58.5	59.2	51.2	57.6	63.3	59.4	61.2	65.6	59.7	61.0	66.9	65.1	63.6		
4-year	44.3	48.1	53.1	52.9	49.8	46.8	50.3	55.8	53.9	47.4	54.7	59.0	57.4	57.5	62.6	56.1	58.9	64.2	62.2			
5-year	41.1	45.5	49.8	51.8	46.4	44.4	47.8	52.9	53.2	44.6	52.3	55.2	55.0	55.9	58.8	53.6	56.2	63.1				
6-year	39.4	42.6	48.1	48.1	46.0	41.6	45.2	50.7	49.6	43.2	50.5	53.1	51.6	53.7	57.5	53.3	54.5					
7-year	38.4	40.1	45.8	46.2	43.9	35.5	43.7	48.0	47.9	41.6	47.8	52.6	49.8	52.6	56.8	50.8						
8-year	37.0	38.5	45.1	44.7	42.3	32.4	41.3	45.8	47.2	40.3	45.7	49.2	47.8	51.1	55.8							
9-year	35.9	35.8	42.6	43.8	41.2	31.0	39.3	42.8	45.6	36.5	43.4	47.2	46.2	50.2								
10-year	34.2	34.4	42.0	42.5	40.1	30.9	37.5	40.9	42.9	34.1	43.1	46.1	45.0									
<u>Lip Cancer</u>																						
1-year	99.3	98.2	99.2	99.4	99.9	100.0	97.8	99.0	100.0	100.0	99.3	100.0	99.9	98.3	100.0	99.3	97.4	97.8	94.8	99.6	99.3	99.7
2-year	97.5	96.6	97.4	97.1	98.4	97.8	97.5	97.8	98.6	98.5	98.7	100.0	99.5	94.1	96.8	97.8	95.2	96.1	93.7	99.6	99.3	
3-year	97.1	94.4	95.0	95.7	98.4	96.3	96.6	96.3	98.6	97.0	98.6	100.0	98.7	92.7	94.6	95.4	93.6	94.9	93.7	97.0		
4-year	95.8	93.3	95.0	95.7	98.4	94.9	95.8	96.3	97.8	95.3	98.6	98.1	95.8	91.8	93.0	93.6	91.8	91.8	91.6			
5-year	94.4	91.2	95.0	95.2	97.6	93.0	93.9	95.1	96.0	94.5	96.5	97.6	94.7	89.6	90.8	91.2	90.2	89.3				
6-year	92.7	89.2	95.0	92.8	96.8	91.8	93.5	93.2	96.0	91.0	95.9	97.2	94.7	88.6	89.3	90.0	89.3					
7-year	91.5	88.1	93.8	91.5	95.4	89.2	92.8	92.5	95.8	88.2	94.3	97.2	94.7	88.3	88.5	90.0						
8-year	90.4	88.1	93.0	89.1	94.1	87.2	92.8	92.2	95.1	85.9	91.5	96.1	90.3	85.4	88.5							
9-year	88.4	87.5	93.0	87.2	93.8	87.2	90.1	89.9	93.0	84.8	90.2	94.2	85.9	85.1								
10-year	86.7	86.4	93.0	86.0	93.3	87.2	88.2	89.1	91.0	83.2	88.6	91.3	81.6									
<u>Oropharynx and Tonsil Cancer</u>																						
1-year	71.4	72.4	75.3	71.5	71.7	76.2	75.1	76.8	76.8	71.4	77.6	74.5	81.1	80.4	81.7	81.2	87.5	82.8	84.0	85.8	82.9	84.3
2-year	54.2	53.4	57.3	52.3	55.3	57.5	61.7	60.5	63.0	58.5	64.8	63.8	70.2	66.7	67.4	66.7	75.6	67.6	72.5	76.8	76.1	
3-year	44.8	45.2	46.4	46.3	43.4	44.1	52.2	51.8	57.7	49.9	55.6	57.7	63.0	60.4	62.3	60.1	68.0	62.6	67.2	72.4		
4-year	39.4	40.1	44.0	42.7	41.8	37.8	45.5	48.1	53.3	45.1	49.7	53.4	58.9	54.1	56.8	55.1	63.7	57.9	60.7			
5-year	36.3	36.2	37.6	39.3	39.1	34.5	43.6	43.4	46.7	41.7	46.3	50.1	54.8	53.1	52.5	53.3	61.2	54.4				
6-year	32.9	33.0	34.5	37.3	35.0	32.2	40.1	43.1	41.8	40.7	44.3	47.0	51.4	48.7	49.4	52.3	58.3					
7-year	31.1	30.6	31.6	34.1	32.3	30.1	37.5	41.1	40.3	39.8	43.3	46.6	48.0	44.6	48.7	51.1						
8-year	27.5	29.1	30.0	32.1	29.3	29.6	37.0	39.7	37.7	38.8	41.4	43.2	47.3	43.6	48.2							
9-year	24.8	26.9	27.6	29.8	27.1	29.3	35.9	36.0	35.9	37.1	38.8	42.1	46.2	42.8								
10-year	23.6	24.5	24.1	28.7	26.5	25.2	34.6	35.8	34.1	37.1	35.6	41.2	45.5									

^aSurvival rates are relative rates expressed as percents.

^bRates are from the SEER 9 areas (San Francisco, Connecticut, Detroit, Hawaii, Iowa, New Mexico, Seattle, Utah, and Atlanta).

Table XXI-5
OVARY CANCER (Invasive)

	All Races, Females			White Females			Black Females		
	All	<65	65+	All	<65	65+	All	<65	65+
<u>5-YR RELATIVE SURVIVAL RATES</u>									
YEAR OF DIAGNOSIS:									
1960-1963 ^a	-	-	-	32	-	-	32	-	-
1970-1973 ^a	-	-	-	36	-	-	32	-	-
1975-1977 ^b	37.2	44.4	21.9	36.5	43.7	21.6	43.1	49.2	25.5 ^f
1978-1980 ^b	38.9	47.5	22.6	38.1	46.6	22.8	40.3	49.7	13.0
1981-1983 ^b	40.7	50.5	24.5	40.4	50.5	24.5	38.9	45.7	23.4 ^f
1984-1986 ^b	39.8	49.7	24.9	38.9	48.7	24.6	40.5	52.4	21.3
1987-1989 ^b	39.9	51.3	24.7	39.9	51.4	25.1	35.2	47.3	17.9
1990-1992 ^b	42.5	55.6	25.6	42.4	56.2	25.5	37.8	49.8	17.7
1993-1995 ^b	43.5	55.9	28.1	42.7	55.6	27.5	43.3	55.3	27.5
1996-2004 ^b	45.6 ^e	56.5 ^e	29.8 ^e	45.3 ^e	56.6 ^e	29.9 ^e	38.3	47.8	21.2
<u>5-YR PERIOD SURVIVAL RATES^{cd}</u>									
YEAR OF DIAGNOSIS:									
1996-2004	46.0	56.7	29.9	45.8	56.8	30.2	39.0	48.4	22.0
<u>STAGE DISTRIBUTION (%) 1996-2004^c</u>									
All Stages									
Number of cases	31,403	16,985	14,418	26,771	14,023	12,748	2,186	1,272	914
Percent	100%	100%	100%	100%	100%	100%	100%	100%	100%
Localized	19	27	9	18	26	9	17	24	9
Regional	7	8	6	7	8	6	7	7	7
Distant	67	61	75	68	62	75	67	63	72
Unstaged	7	4	10	7	4	10	9	6	12
<u>5-YR RELATIVE SURVIVAL RATES, 1996-2004^c</u>									
AGE AT DIAGNOSIS:									
<45	73.0	-	-	73.5	-	-	68.7	-	-
45-54	56.0	-	-	56.7	-	-	43.0	-	-
55-64	45.9	-	-	46.2	-	-	35.3	-	-
65-74	35.6	-	-	36.0	-	-	23.1	-	-
75+	22.3	-	-	22.7	-	-	16.0	-	-
Under 65	56.5	-	-	56.6	-	-	48.7	-	-
65 and over	29.4	-	-	29.7	-	-	20.3	-	-
STAGE:									
All Stages	45.5	56.5	29.4	45.3	56.6	29.7	38.4	48.7	20.3
Localized	92.7	93.0	92.1	92.7	93.1	91.5	92.5	94.4	85.5 ^f
Regional	71.1	76.8	59.2	71.8	78.1	59.0	58.5 ^f	64.4 ^f	45.9 ^g
Distant	30.6	38.6	21.1	30.9	39.1	21.7	22.7	29.7	11.9
Unstaged	26.0	46.7	12.4	26.0	47.2	13.4	23.0	45.5 ^f	0.0

Ovary excludes borderline cases or histologies 8442, 8451, 8462, 8472, and 8473.

^a Rates are based on End Results data from a series of hospital registries and one population-based registry.

^b Rates are from the SEER 9 areas (San Francisco, Connecticut, Detroit, Hawaii, Iowa, New Mexico, Seattle, Utah, Atlanta).

Rates are based on follow-up of patients into 2005.

^c Rates are from the SEER 17 areas (San Francisco, Connecticut, Detroit, Hawaii, Iowa, New Mexico, Seattle, Utah, Atlanta, San Jose-Monterey, Los Angeles, Alaska Native Registry, Rural Georgia, California excluding SF/SJM/LA, Kentucky, Louisiana and New Jersey). California excluding SF/SJM/LA, Kentucky, Louisiana, and New Jersey contribute cases for diagnosis years 2000-2004. The remaining 13 SEER Areas contribute cases for the entire period 1996-2004. Rates are based on follow-up of patients into 2005.

^d Period survival provides a more up-to-date estimate of survival by piecing together the most recent conditional survival estimates from several cohorts. It is computed here using three calendar year blocks (2002-2004: 0-1 year survival), (2001-2003: 1-2 year survival), (2000-2002: 2-3 year survival), (1999-2001: 3-4 year survival), (1998-2000: 4-5 years survival).

^e The difference in rates between 1975-1977 and 1996-2004 is statistically significant ($p < .05$).

^f The standard error of the survival rate is between 5 and 10 percentage points.

^g The standard error of the survival rate is greater than 10 percentage points.

- Statistic could not be calculated due to fewer than 16 cases during the time period.

Table XXII-5
PANCREAS CANCER (Invasive)

SURVIVAL RATES, BY RACE, SEX, DIAGNOSIS YEAR, STAGE AND AGE

	All Races			Whites			Blacks		
	Total	Males	Females	Total	Males	Females	Total	Males	Females
<u>5-YR RELATIVE SURVIVAL RATES</u>									
YEAR OF DIAGNOSIS:									
1960-1963 ^a	-	-	-	1	1	2	1	0	3
1970-1973 ^a	-	-	-	2	2	2	2	0	3
1975-1977 ^b	2.5	2.7	2.2	2.5	2.7	2.3	2.3	2.7	2.0
1978-1980 ^b	3.0	2.8	3.2	2.7	2.6	2.7	5.9	4.3	7.4
1981-1983 ^b	3.0	2.6	3.3	2.8	2.3	3.2	3.7	4.0	3.3
1984-1986 ^b	3.0	2.4	3.5	2.7	2.2	3.1	4.9	4.2	5.4
1987-1989 ^b	3.8	3.5	4.1	3.4	3.2	3.5	5.9	5.5	6.1
1990-1992 ^b	4.5	4.2	4.8	4.7	4.4	4.9	3.7	3.2	4.0
1993-1995 ^b	4.2	3.9	4.6	4.2	3.8	4.6	3.7	3.5	3.9
1996-2004 ^b	5.1 ^e	5.1 ^e	5.0 ^e	4.9 ^e	5.4 ^e	4.5 ^e	4.6 ^e	3.2	6.0 ^e
<u>5-YR PERIOD SURVIVAL RATES^{cd}</u>									
YEAR OF DIAGNOSIS:									
1996-2004	5.5	5.5	5.4	5.4	5.6	5.2	5.2	4.3	5.8
<u>STAGE DISTRIBUTION (%) 1996-2004^c</u>									
All Stages									
Number of cases	44,588	21,658	22,930	36,197	17,727	18,470	5,004	2,268	2,736
Percent	100%	100%	100%	100%	100%	100%	100%	100%	100%
Localized	7	7	8	7	7	8	8	7	10
Regional	26	26	26	26	26	26	24	23	24
Distant	52	55	49	52	55	49	55	59	51
Unstaged	15	13	16	15	13	17	13	11	15
<u>5-YR RELATIVE SURVIVAL RATES, 1996-2004^c</u>									
AGE AT DIAGNOSIS:									
<45	19.2	14.7	25.1	18.3	14.9	22.9	19.3	14.7	26.3
45-54	8.2	7.4	9.4	8.2	8.1	8.4	6.8	4.0	10.7
55-64	5.4	4.7	6.3	5.4	4.7	6.3	4.5	3.4	5.9
65-74	4.0	3.8	4.2	4.1	4.2	4.0	3.0	2.4	3.5
75+	2.6	2.9	2.5	2.7	2.9	2.5	1.6	0.5	2.0
Under 65	7.9	6.7	9.5	7.7	6.9	8.9	7.1	5.0	9.6
65 and over	3.3	3.5	3.2	3.4	3.6	3.2	2.4	1.8	2.8
STAGE:									
All Stages	5.1	5.0	5.2	5.0	5.1	4.9	4.6	3.6	5.4
Localized	20.0	17.9	21.6	20.3	19.0	21.1	15.4	11.3	17.6
Regional	8.2	8.5	8.0	8.3	9.1	7.6	6.9	4.6	8.6
Distant	1.8	2.0	1.6	1.6	1.8	1.4	2.1	2.5	1.7
Unstaged	4.3	4.8	3.8	3.9	4.7	3.2	4.5	3.1	5.4

^a Rates are based on End Results data from a series of hospital registries and one population-based registry.
^b Rates are from the SEER 9 areas (San Francisco, Connecticut, Detroit, Hawaii, Iowa, New Mexico, Seattle, Utah, Atlanta).
^c Rates are based on follow-up of patients into 2005.
^d Rates are from the SEER 17 areas (San Francisco, Connecticut, Detroit, Hawaii, Iowa, New Mexico, Seattle, Utah, Atlanta, San Jose-Monterey, Los Angeles, Alaska Native Registry, Rural Georgia, California excluding SF/SJM/LA, Kentucky, Louisiana and New Jersey). California excluding SF/SJM/LA, Kentucky, Louisiana, and New Jersey contribute cases for diagnosis years 2000-2004. The remaining 13 SEER Areas contribute cases for the entire period 1996-2004. Rates are based on follow-up of patients into 2005.
^e Period survival provides a more up-to-date estimate of survival by piecing together the most recent conditional survival estimates from several cohorts. It is computed here using three calendar year blocks (2002-2004: 0-1 year survival), (2001-2003: 1-2 year survival), (2000-2002: 2-3 year survival), (1999-2001: 3-4 year survival), (1998-2000: 4-5 years survival).
^f The difference in rates between 1975-1977 and 1996-2004 is statistically significant (p<.05).
^g The standard error of the survival rate is between 5 and 10 percentage points.
^h The standard error of the survival rate is greater than 10 percentage points.
ⁱ Statistic could not be calculated due to fewer than 16 cases during the time period.

Table XXIII-5
PROSTATE CANCER (Invasive)

SURVIVAL RATES, BY RACE, DIAGNOSIS YEAR, STAGE AND AGE

	All Races, Males			White Males			Black Males		
	All	<65	65+	All	<65	65+	All	<65	65+
<u>5-YR RELATIVE SURVIVAL RATES</u>									
YEAR OF DIAGNOSIS:									
1960-1963 ^a	-	-	-	50	-	-	35	-	-
1970-1973 ^a	-	-	-	63	-	-	55	-	-
1975-1977 ^b	68.9	73.4	67.3	69.8	75.2	67.8	61.3	61.9	61.0
1978-1980 ^b	72.0	75.7	70.6	73.2	77.2	71.8	62.8	65.3	61.5
1981-1983 ^b	73.8	76.4	72.8	74.9	78.0	73.9	63.7	65.4	62.9
1984-1986 ^b	76.1	77.5	75.6	77.3	79.1	76.7	66.3	67.3	65.8
1987-1989 ^b	83.9	83.4	84.0	85.4	84.8	85.6	72.2	72.9	72.0
1990-1992 ^b	94.2	93.4	94.4	95.3	94.4	95.6	85.5	87.0	84.9
1993-1995 ^b	95.4	95.8	95.2	96.2	96.5	96.0	91.5	92.9	90.5
1996-2004 ^b	98.9 ^e	99.2 ^e	99.1 ^e	99.4 ^e	99.5 ^e	99.6 ^e	95.9 ^e	98.0 ^e	94.3 ^e
<u>5-YR PERIOD SURVIVAL RATES^{cd}</u>									
YEAR OF DIAGNOSIS:									
1996-2004	99.9	99.3	99.8	99.9	99.7	99.8	96.3	97.9	94.5
<u>STAGE DISTRIBUTION (%) 1996-2004^c</u>									
All Stages									
Number of cases	324,062	118,154	205,908	258,296	92,400	165,896	40,796	18,954	21,842
Percent	100%	100%	100%	100%	100%	100%	100%	100%	100%
Localized/Regional	91	95	89	92	95	90	89	93	86
Distant	4	3	5	4	3	5	6	5	8
Unstaged	4	2	5	4	2	5	5	3	7
<u>5-YR RELATIVE SURVIVAL RATES, 1996-2004^c</u>									
AGE AT DIAGNOSIS:									
<45	94.5	-	-	94.0	-	-	95.5	-	-
45-54	97.5	-	-	97.8	-	-	96.5	-	-
55-64	99.5	-	-	99.7	-	-	98.2	-	-
65-74	100.0	-	-	100.0	-	-	96.7	-	-
75+	96.0	-	-	96.6	-	-	85.7	-	-
Under 65	99.0	-	-	99.3	-	-	97.6	-	-
65 and over	99.3	-	-	99.7	-	-	93.6	-	-
STAGE:									
All Stages	98.9	99.0	99.3	99.5	99.3	99.7	95.4	97.6	93.6
Localized/Regional	100.0	100.0	100.0	100.0	100.0	100.0	100.0	100.0	100.0
Distant	31.7	32.0	31.7	30.9	32.0	30.6	29.4	28.3	30.1
Unstaged	79.4	88.7	76.8	79.1	89.6	76.2	72.2	83.2	67.3

^a Rates are based on End Results data from a series of hospital registries and one population-based registry.
^b Rates are from the SEER 9 areas (San Francisco, Connecticut, Detroit, Hawaii, Iowa, New Mexico, Seattle, Utah, Atlanta).
Rates are based on follow-up of patients into 2005.
^c Rates are from the SEER 17 areas (San Francisco, Connecticut, Detroit, Hawaii, Iowa, New Mexico, Seattle, Utah, Atlanta, San Jose-Monterey, Los Angeles, Alaska Native Registry, Rural Georgia, California excluding SF/SJM/LA, Kentucky, Louisiana and New Jersey). California excluding SF/SJM/LA, Kentucky, Louisiana, and New Jersey contribute cases for diagnosis years 2000-2004. The remaining 13 SEER Areas contribute cases for the entire period 1996-2004. Rates are based on follow-up of patients into 2005.
^d Period survival provides a more up-to-date estimate of survival by piecing together the most recent conditional survival estimates from several cohorts. It is computed here using three calendar year blocks (2002-2004: 0-1 year survival), (2001-2003: 1-2 year survival), (2000-2002: 2-3 year survival), (1999-2001: 3-4 year survival), (1998-2000: 4-5 years survival).
^e The difference in rates between 1975-1977 and 1996-2004 is statistically significant (p<.05).
^f The standard error of the survival rate is between 5 and 10 percentage points.
^g The standard error of the survival rate is greater than 10 percentage points.
- Statistic could not be calculated due to fewer than 16 cases during the time period.

Table XXIV-5
STOMACH CANCER (Invasive)

SURVIVAL RATES, BY RACE, SEX, DIAGNOSIS YEAR, STAGE AND AGE

	All Races			Whites			Blacks		
	Total	Males	Females	Total	Males	Females	Total	Males	Females
5-YR RELATIVE SURVIVAL RATES									
YEAR OF DIAGNOSIS:									
1960-1963 ^a	-	-	-	11	10	13	8	5	14
1970-1973 ^a	-	-	-	13	12	14	13	15	10
1975-1977 ^b	15.8	15.0	17.1	14.8	13.7	16.4	16.3	16.4	16.1
1978-1980 ^b	16.8	14.9	19.9	16.2	14.4	19.1	16.9	16.0	18.6
1981-1983 ^b	18.0	17.1	19.5	16.9	16.0	18.3	17.2	16.8	17.7
1984-1986 ^b	18.4	16.2	21.8	17.6	15.1	21.6	20.0	17.5	23.4
1987-1989 ^b	20.7	17.5	26.0	19.1	16.0	24.5	20.0	17.2	24.5
1990-1992 ^b	21.7	18.6	26.5	19.3	16.4	24.1	23.8	22.9	24.9
1993-1995 ^b	21.7	20.4	23.9	20.6	19.3	23.1	19.8	17.6	23.0
1996-2004 ^b	24.8 ^e	23.3 ^e	27.2 ^e	23.1 ^e	21.2 ^e	26.3 ^e	24.5 ^e	22.6 ^e	26.9 ^e
5-YR PERIOD SURVIVAL RATES^{cd}									
YEAR OF DIAGNOSIS:									
1996-2004	26.2	24.0	29.7	24.4	22.4	28.1	24.6	21.5	28.4
STAGE DISTRIBUTION (%) 1996-2004^c									
All Stages									
Number of cases	33,774	20,398	13,376	23,855	14,722	9,133	4,237	2,371	1,866
Percent	100%	100%	100%	100%	100%	100%	100%	100%	100%
Localized	24	23	26	23	22	25	24	22	27
Regional	30	31	27	29	30	26	28	30	26
Distant	35	36	33	36	37	34	34	37	31
Unstaged	12	10	14	12	10	15	13	11	16
5-YR RELATIVE SURVIVAL RATES, 1996-2004^c									
AGE AT DIAGNOSIS:									
<45	28.5	26.3	31.4	27.0	24.3	30.9	34.5	30.1	40.4
45-54	27.3	24.8	32.2	24.5	21.9	29.9	30.1	26.0	37.1
55-64	25.3	24.0	28.2	23.0	22.0	25.4	24.4	19.9	32.8
65-74	25.3	23.4	28.5	23.2	21.0	27.4	23.0	22.1	24.1
75+	21.3	19.6	23.1	20.3	19.1	21.7	14.7	11.4	16.8
Under 65	26.6	24.7	30.4	24.2	22.4	28.2	28.9	24.3	36.7
65 and over	23.3	21.7	25.4	21.8	20.2	24.1	19.3	18.1	20.3
STAGE:									
All Stages	24.7	23.1	27.2	22.8	21.2	25.5	24.1	21.6	27.2
Localized	60.7	58.1	64.4	58.1	54.9	62.8	56.2	53.9	58.5
Regional	24.8	23.9	26.3	22.6	22.1	23.7	26.3	24.6	28.0
Distant	3.7	3.5	3.9	3.4	3.3	3.6	3.3	2.5	4.5
Unstaged	14.9	12.4	17.7	13.9	11.2	17.3	13.7	11.3	15.7

^a Rates are based on End Results data from a series of hospital registries and one population-based registry.
^b Rates are from the SEER 9 areas (San Francisco, Connecticut, Detroit, Hawaii, Iowa, New Mexico, Seattle, Utah, Atlanta).
Rates are based on follow-up of patients into 2005.
^c Rates are from the SEER 17 areas (San Francisco, Connecticut, Detroit, Hawaii, Iowa, New Mexico, Seattle, Utah, Atlanta, San Jose-Monterey, Los Angeles, Alaska Native Registry, Rural Georgia, California excluding SF/SJM/LA, Kentucky, Louisiana and New Jersey). California excluding SF/SJM/LA, Kentucky, Louisiana, and New Jersey contribute cases for diagnosis years 2000-2004. The remaining 13 SEER Areas contribute cases for the entire period 1996-2004. Rates are based on follow-up of patients into 2005.
^d Period survival provides a more up-to-date estimate of survival by piecing together the most recent conditional survival estimates from several cohorts. It is computed here using three calendar year blocks (2002-2004: 0-1 year survival), (2001-2003: 1-2 year survival), (2000-2002: 2-3 year survival), (1999-2001: 3-4 year survival), (1998-2000: 4-5 years survival).
^e The difference in rates between 1975-1977 and 1996-2004 is statistically significant (p<.05).
^f The standard error of the survival rate is between 5 and 10 percentage points.
^g The standard error of the survival rate is greater than 10 percentage points.
- Statistic could not be calculated due to fewer than 16 cases during the time period.

Table XXV-5
TESTIS CANCER (Invasive)

SURVIVAL RATES, BY RACE, DIAGNOSIS YEAR, STAGE AND AGE

	All Races, Males			White Males			Black Males		
	All	<50	50+	All	<50	50+	All	<50	50+
5-YR RELATIVE SURVIVAL RATES									
YEAR OF DIAGNOSIS:									
1960-1963 ^a	-	-	-	63	-	-	-	-	-
1970-1973 ^a	-	-	-	72	-	-	-	-	-
1975-1977 ^b	82.8	83.4	78.4	82.7	83.3	78.1	82.0 ^f	85.0 ^f	-
1978-1980 ^b	89.1	89.5	84.2	89.4	89.8	85.1	72.7 ^f	77.1 ^f	-
1981-1983 ^b	92.3	92.7	87.0	92.5	92.9	87.2	87.5 ^f	84.7 ^f	-
1984-1986 ^b	92.8	93.6	81.9	93.1	94.0	82.2	87.0 ^f	89.4 ^f	-
1987-1989 ^b	95.1	95.0	95.5	95.4	95.3	95.2	88.4 ^f	87.8 ^f	-
1990-1992 ^b	95.9	95.9	94.4	96.2	96.2	95.4	83.6 ^f	88.6 ^f	-
1993-1995 ^b	95.7	96.2	86.6	96.0	96.5	87.6	88.2	89.4	-
1996-2004 ^b	96.1 ^e	96.5 ^e	90.4 ^e	96.4 ^e	96.8 ^e	91.1 ^e	87.4	88.4	-
5-YR PERIOD SURVIVAL RATES^{cd}									
YEAR OF DIAGNOSIS:									
1996-2004	95.4	95.7	92.0	95.7	95.9	92.4	87.5	89.5	-
STAGE DISTRIBUTION (%) 1996-2004^c									
All Stages									
Number of cases	13,826	12,632	1,194	12,727	11,628	1,099	392	356	36
Percent	100%	100%	100%	100%	100%	100%	100%	100%	100%
Localized	70	70	68	71	71	68	59	60	50
Regional	18	18	18	17	17	17	22	22	25
Distant	11	11	11	11	11	12	16	16	17
Unstaged	1	1	3	1	1	3	2	1	8
5-YR RELATIVE SURVIVAL RATES, 1996-2004^c									
AGE AT DIAGNOSIS:									
<45	95.7	-	-	95.9	-	-	90.7	-	-
45-54	95.7	-	-	96.4	-	-	80.0 ^f	-	-
55-64	90.8	-	-	91.4	-	-	-	-	-
65-74	79.4 ^f	-	-	80.9 ^f	-	-	-	-	-
75+	69.3 ^g	-	-	71.8 ^g	-	-	-	-	-
Under 65	95.6	-	-	96.0	-	-	88.7	-	-
65 and over	78.7 ^f	-	-	80.3 ^f	-	-	-	-	-
STAGE:									
All Stages	95.5	95.7	92.1	95.8	96.0	92.9	88.1	90.3	55.5 ^g
Localized	99.3	99.3	98.6	99.4	99.4	98.9	99.2	100.0	73.4 ^g
Regional	95.7	95.8	92.3	96.0	96.0	94.3	87.9	91.1	-
Distant	71.1	72.3	57.8	72.2	73.4	59.0 ^f	51.3 ^f	52.8 ^f	-
Unstaged	87.6	91.7	65.5 ^g	88.9	92.6	68.8 ^g	-	-	-

^a Rates are based on End Results data from a series of hospital registries and one population-based registry.

^b Rates are from the SEER 9 areas (San Francisco, Connecticut, Detroit, Hawaii, Iowa, New Mexico, Seattle, Utah, Atlanta).

Rates are based on follow-up of patients into 2005.

^c Rates are from the SEER 17 areas (San Francisco, Connecticut, Detroit, Hawaii, Iowa, New Mexico, Seattle, Utah, Atlanta, San Jose-Monterey, Los Angeles, Alaska Native Registry, Rural Georgia, California excluding SF/SJM/LA, Kentucky, Louisiana and New Jersey). California excluding SF/SJM/LA, Kentucky, Louisiana, and New Jersey contribute cases for diagnosis years 2000-2004. The remaining 13 SEER Areas contribute cases for the entire period 1996-2004. Rates are based on follow-up of patients into 2005.

^d Period survival provides a more up-to-date estimate of survival by piecing together the most recent conditional survival estimates from several cohorts. It is computed here using three calendar year blocks (2002-2004: 0-1 year survival), (2001-2003: 1-2 year survival), (2000-2002: 2-3 year survival), (1999-2001: 3-4 year survival), (1998-2000: 4-5 years survival).

^e The difference in rates between 1975-1977 and 1996-2004 is statistically significant (p<.05).

^f The standard error of the survival rate is between 5 and 10 percentage points.

^g The standard error of the survival rate is greater than 10 percentage points.

- Statistic could not be calculated due to fewer than 16 cases during the time period.

Table XXVI-5
THYROID CANCER (Invasive)

SURVIVAL RATES, BY RACE, SEX, DIAGNOSIS YEAR, STAGE AND AGE

	All Races			Whites			Blacks		
	Total	Males	Females	Total	Males	Females	Total	Males	Females
<u>5-YR RELATIVE SURVIVAL RATES</u>									
YEAR OF DIAGNOSIS:									
1960-1963 ^a	-	-	-	83	75	87	-	-	-
1970-1973 ^a	-	-	-	86	82	87	-	-	-
1975-1977 ^b	93.2	92.6	93.4	93.0	92.3	93.2	90.7	84.8 ^g	91.7
1978-1980 ^b	93.2	88.5	94.6	92.7	88.8	93.8	90.5	68.8 ^g	95.7
1981-1983 ^b	94.4	93.0	94.8	93.9	91.9	94.5	96.6	100.0	93.7
1984-1986 ^b	93.9	90.9	94.8	93.9	90.6	94.8	90.0	86.1 ^f	90.8
1987-1989 ^b	95.1	92.4	95.9	94.9	92.4	95.5	92.5	90.7 ^f	92.6
1990-1992 ^b	95.1	91.3	96.2	95.7	92.5	96.6	87.4	84.8 ^f	88.3
1993-1995 ^b	96.0	92.5	97.0	96.0	92.3	97.2	93.4	88.3 ^f	94.4
1996-2004 ^b	96.8 ^e	93.6	97.7 ^e	97.1 ^e	94.1	98.0 ^e	95.1	90.1	96.0
<u>5-YR PERIOD SURVIVAL RATES^{cd}</u>									
YEAR OF DIAGNOSIS:									
1996-2004	97.6	95.1	98.3	97.6	95.3	98.3	96.0	92.3	96.5
<u>STAGE DISTRIBUTION (%) 1996-2004^c</u>									
All Stages									
Number of cases	37,084	8,554	28,530	30,593	7,285	23,308	2,153	403	1,750
Percent	100%	100%	100%	100%	100%	100%	100%	100%	100%
Localized	59	49	62	59	50	62	64	54	67
Regional	34	39	32	33	39	32	26	31	25
Distant	5	9	4	5	8	4	7	11	6
Unstaged	3	3	2	2	2	2	3	4	3
<u>5-YR RELATIVE SURVIVAL RATES, 1996-2004^c</u>									
AGE AT DIAGNOSIS:									
<45	99.3	97.8	99.6	99.4	98.2	99.7	98.1	89.9	99.3
45-54	98.1	95.1	99.0	98.4	95.5	99.3	94.3	85.6	96.3
55-64	95.0	91.2	96.5	95.3	91.2	96.9	91.8	86.9 ^f	92.8
65-74	91.4	89.2	92.3	91.8	89.5	92.9	91.4	90.5 ^f	89.2
75+	78.5	77.0	78.9	80.0	77.2	81.1	67.2 ^f	-	60.6 ^f
Under 65	98.3	95.6	99.1	98.5	96.0	99.2	96.0	88.5	97.4
65 and over	87.0	85.7	87.5	87.7	85.7	88.5	85.2	93.3 ^f	80.5
STAGE:									
All Stages	96.9	94.0	97.7	97.1	94.3	98.0	94.8	90.7	95.6
Localized	99.7	99.4	99.8	99.8	99.5	99.8	98.9	96.6	99.0
Regional	96.9	95.4	97.4	97.0	95.5	97.6	95.8	92.6	96.5
Distant	57.8	56.1	58.7	57.8	55.2	59.5	49.2 ^f	51.4 ^f	47.6 ^f
Unstaged	89.5	84.1	90.6	88.8	82.6	90.6	85.4 ^f	-	85.3 ^f

^a Rates are based on End Results data from a series of hospital registries and one population-based registry.
^b Rates are from the SEER 9 areas (San Francisco, Connecticut, Detroit, Hawaii, Iowa, New Mexico, Seattle, Utah, Atlanta).
Rates are based on follow-up of patients into 2005.
^c Rates are from the SEER 17 areas (San Francisco, Connecticut, Detroit, Hawaii, Iowa, New Mexico, Seattle, Utah, Atlanta, San Jose-Monterey, Los Angeles, Alaska Native Registry, Rural Georgia, California excluding SF/SJM/LA, Kentucky, Louisiana and New Jersey). California excluding SF/SJM/LA, Kentucky, Louisiana, and New Jersey contribute cases for diagnosis years 2000-2004. The remaining 13 SEER Areas contribute cases for the entire period 1996-2004. Rates are based on follow-up of patients into 2005.
^d Period survival provides a more up-to-date estimate of survival by piecing together the most recent conditional survival estimates from several cohorts. It is computed here using three calendar year blocks (2002-2004: 0-1 year survival), (2001-2003: 1-2 year survival), (2000-2002: 2-3 year survival), (1999-2001: 3-4 year survival), (1998-2000: 4-5 years survival).
^e The difference in rates between 1975-1977 and 1996-2004 is statistically significant (p<.05).
^f The standard error of the survival rate is between 5 and 10 percentage points.
^g The standard error of the survival rate is greater than 10 percentage points.
- Statistic could not be calculated due to fewer than 16 cases during the time period.

Table XXVII-5
URINARY BLADDER CANCER (Invasive and *In Situ*)

SURVIVAL RATES, BY RACE, SEX, DIAGNOSIS YEAR, STAGE AND AGE

	All Races			Whites			Blacks		
	Total	Males	Females	Total	Males	Females	Total	Males	Females
5-YR RELATIVE SURVIVAL RATES									
YEAR OF DIAGNOSIS:									
1960-1963 ^a	-	-	-	53	53	53	24	24	24
1970-1973 ^a	-	-	-	61	61	60	36	38	27
1975-1977 ^b	73.5	75.0	69.6	74.5	75.5	71.5	50.6	56.8	38.8 ^f
1978-1980 ^b	76.0	77.2	72.7	76.9	77.6	74.8	55.6	64.3	40.8 ^f
1981-1983 ^b	78.6	79.9	75.0	79.3	80.4	76.4	60.3	65.7	48.4 ^f
1984-1986 ^b	78.2	79.5	74.6	78.7	79.9	75.6	61.0	64.0	54.2 ^f
1987-1989 ^b	80.6	82.8	74.1	81.4	83.5	75.4	63.3	68.1	54.0 ^f
1990-1992 ^b	80.9	83.3	74.0	81.9	84.2	75.2	64.7	67.6	59.9
1993-1995 ^b	81.5	83.1	76.9	82.2	83.4	78.8	61.7	68.9	46.8
1996-2004 ^b	80.8 ^e	81.8 ^e	77.9 ^e	81.6 ^e	82.4 ^e	79.2 ^e	66.2 ^e	69.4 ^e	59.1 ^e
5-YR PERIOD SURVIVAL RATES^{cd}									
YEAR OF DIAGNOSIS:									
1996-2004	79.7	81.2	75.3	80.2	81.4	76.6	67.1	71.8	58.1
STAGE DISTRIBUTION (%) 1996-2004^c									
All Stages									
Number of cases	77,427	57,690	19,737	70,002	52,507	17,495	3,662	2,328	1,334
Percent	100%	100%	100%	100%	100%	100%	100%	100%	100%
Localized	75	76	71	76	77	72	60	64	53
Regional	18	18	21	18	18	20	27	24	33
Distant	4	3	5	3	3	5	7	5	9
Unstaged	3	3	4	3	3	3	6	6	5
5-YR RELATIVE SURVIVAL RATES, 1996-2004^c									
AGE AT DIAGNOSIS:									
<45	90.9	90.9	90.9	91.8	91.6	92.1	80.9	81.8	78.5 ^f
45-54	85.3	85.6	84.1	86.1	86.2	85.7	70.9	74.8	58.3 ^f
55-64	84.8	85.2	83.4	85.4	85.6	84.5	73.0	76.6	64.6
65-74	79.8	80.7	77.0	80.4	81.0	78.5	62.7	67.7	54.2
75+	72.0	74.6	66.2	72.9	75.3	67.3	51.0	51.8	48.0
Under 65	85.7	86.0	84.7	86.3	86.5	86.0	73.6	76.9	65.1
65 and over	76.2	78.1	71.2	76.9	78.6	72.4	57.1	61.1	51.4
STAGE:									
All Stages	79.8	81.2	75.8	80.5	81.6	77.1	64.9	69.3	56.3
Localized	92.5	92.8	91.9	92.8	92.9	92.3	85.3	86.7	80.4
Regional	44.7	46.8	39.4	45.2	47.2	39.9	38.4	42.3	33.0
Distant	6.1	6.0	6.2	5.9	6.1	5.2	7.5	3.3	11.5
Unstaged	58.8	62.7	48.2	59.1	62.2	50.1	43.2	50.1 ^f	28.9 ^f

^a Rates are based on End Results data from a series of hospital registries and one population-based registry.

^b Rates are from the SEER 9 areas (San Francisco, Connecticut, Detroit, Hawaii, Iowa, New Mexico, Seattle, Utah, Atlanta).

Rates are based on follow-up of patients into 2005.

^c Rates are from the SEER 17 areas (San Francisco, Connecticut, Detroit, Hawaii, Iowa, New Mexico, Seattle, Utah, Atlanta, San Jose-Monterey, Los Angeles, Alaska Native Registry, Rural Georgia, California excluding SF/SJM/LA, Kentucky, Louisiana and New Jersey). California excluding SF/SJM/LA, Kentucky, Louisiana, and New Jersey contribute cases for diagnosis years 2000-2004. The remaining 13 SEER Areas contribute cases for the entire period 1996-2004. Rates are based on follow-up of patients into 2005.

^d Period survival provides a more up-to-date estimate of survival by piecing together the most recent conditional survival estimates from several cohorts. It is computed here using three calendar year blocks (2002-2004: 0-1 year survival), (2001-2003: 1-2 year survival), (2000-2002: 2-3 year survival), (1999-2001: 3-4 year survival), (1998-2000: 4-5 years survival).

^e The difference in rates between 1975-1977 and 1996-2004 is statistically significant ($p < .05$).

^f The standard error of the survival rate is between 5 and 10 percentage points.

^g The standard error of the survival rate is greater than 10 percentage points.

- Statistic could not be calculated due to fewer than 16 cases during the time period.

Table XXVIII-9

CHILDHOOD CANCER
SEER Incidence, U.S. Death and 5-Year Relative Survival Rates
For Top Cancer Sites^f By 5-Year Age Groups
All Races, Males and Females

Age/Site	SEER Incidence ^a					US Mortality ^b					Survival ^a	
	2001-2005 Num Cases	2001-2005 Rate	1975-2005 APC	1975-1989 APC	1990-2005 APC	2001-2005 Num Deaths	2001-2005 Rate	1975-2005 APC	1975-1989 APC	1990-2005 APC	1975-1977	1996-2004
Ages 0-4												
All Sites	5,742	21.4	0.8*	1.3*	0.5	2,354	2.4	-2.8*	-2.8*	-2.3*	57.3	80.8 ^c
Soft tissue	468	1.7	1.3*	0.9	3.4*	121	0.1	-1.9*	-0.1	-1.0	61.1 ^d	73.7 ^c
Kidney and Renal pelvis	478	1.8	0.0	0.7	-0.7	96	0.1	-3.5*	-5.9*	0.2 [#]	71.8	91.9 ^c
Eye and Orbit	343	1.3	0.5	1.1	-1.1	32	0.0	-	-	-	87.1 ^d	95.0 ^c
Brain and Other nervous	1,046	3.9	1.2*	3.6*	0.3 [#]	587	0.6	-1.4*	-1.4*	-2.2*	52.5	70.6 ^c
Other endocrine	380	1.4	-	-	-	389	0.4	-	-	-	35.7 ^d	65.8 ^c
Leukemia	2,170	8.1	0.9*	1.1*	1.1	753	0.8	-3.2*	-4.0*	-2.5* [#]	55.4	85.7 ^c
Acute lymphocytic	1,736	6.5	0.9*	1.6*	1.0	254	0.3	-4.5*	-5.8*	-2.3* [#]	63.1	91.2 ^c
Ages 5-9												
All Sites	3,027	11.2	0.2	1.2*	0.1	2,557	2.6	-2.8*	-3.3*	-1.6* [#]	58.5	78.8 ^c
Brain and Other nervous	853	3.2	0.4	1.3	-0.4	921	0.9	-0.7*	-0.6	-0.4	58.0	72.2 ^c
Leukemia	1,066	3.9	0.6*	1.8*	0.0 [@]	738	0.7	-4.9*	-5.6*	-3.7* [#]	52.3	83.0 ^c
Acute lymphocytic	892	3.3	0.8*	2.6*	0.4 [@]	400	0.4	-5.6*	-6.6*	-3.7* [#]	55.6	86.9 ^c
Ages 10-14												
All Sites	3,717	13.1	0.7*	1.2*	0.5	2,618	2.5	-2.1*	-2.6*	-1.3* [#]	58.9	80.0 ^c
Bone and Joint	387	1.4	0.0	2.1	-1.3 [#]	321	0.3	-1.3*	-3.4*	0.9 [#]	52.8 ^d	68.7 ^c
Brain and Other nervous	748	2.6	1.0*	1.0	-0.5	701	0.7	-1.1*	-1.9*	-0.6 [@]	59.5	79.8 ^c
Hodgkin lymphoma	319	1.1	-1.1*	-0.9	-2.3	24	0.0	-	-	-	78.7	96.2 ^c
Leukemia	852	3.0	0.6	2.6	1.4	830	0.8	-3.0*	-3.2*	-2.9*	35.2	70.7 ^c
Acute lymphocytic	594	2.1	1.0*	3.9*	1.5	407	0.4	-3.4*	-2.8*	-3.0*	43.6 ^d	79.9 ^c
Ages 15-19												
All Sites	5,741	21.3	0.6*	1.1*	0.3 [@]	3,607	3.5	-1.9*	-2.4*	-1.5* [#]	68.0	80.4 ^c
Bone and Joint	417	1.5	0.2	1.4	-0.4	537	0.5	-1.2*	-2.8*	0.6 [#]	51.0 ^d	63.6 ^c
Melanoma of the skin	479	1.8	1.6*	1.8	1.2	44	0.0	-	-	-	76.2 ^d	98.0 ^c
Testis(males)	494	3.6	1.4*	1.5	1.4	48	0.1	-	-	-	66.0 ^d	92.5 ^c
Brain and Other nervous	565	2.1	0.4	1.4	-0.8	558	0.5	-1.1*	-1.2*	-1.1*	65.0	78.7 ^c
Thyroid	473	1.8	1.1*	1.1	1.1	-	-	-	-	-	100.0	97.9
Hodgkin lymphoma	790	2.9	-0.9*	0.5	-2.2* [#]	96	0.1	-4.6*	-3.1*	-5.4*	88.9	95.0 ^c
Non-Hodgkin lymphoma	487	1.8	1.6*	3.3*	1.0	261	0.3	-2.7*	-2.6*	-3.4*	48.0 ^d	78.7 ^c
Leukemia	807	3.0	0.9*	0.0	1.6	1,078	1.0	-2.1*	-2.3*	-2.4*	24.4	51.3 ^c
Acute lymphocytic	449	1.7	1.2*	2.3	2.2	465	0.5	-2.0*	-1.6*	-2.6*	29.5 ^d	53.8 ^c

The APC is the Annual Percent Change over the time interval.

Note: Incidence and death rates are per 100,000 and are age-adjusted(as appropriate) to the 2000 US Std Population (19 age groups - Census P25-1130). Survival rates are expressed as percents.

^a Incidence data used in calculating the rates are from the 17 SEER areas (San Francisco, Connecticut, Detroit, Hawaii, Iowa, New Mexico, Seattle, Utah, Atlanta, San Jose-Monterey, Los Angeles, Alaska Native Registry, Rural Georgia, California excluding SF/SJM/LA, Kentucky, Louisiana and New Jersey).

Incidence data used in calculating the trends and survival estimates are from the 9 SEER areas (San Francisco, Connecticut, Detroit, Hawaii, Iowa, New Mexico, Seattle, Utah, and Atlanta).

^b US Mortality Files, National Center for Health Statistics, Centers for Disease Control and Prevention.

^c The difference in rates between 1975-1977 and 1996-2004 is statistically significant (p<.05).

^d The standard error of the survival rate is between 5 and 10 percentage points.

^e The standard error of the survival rate is greater than 10 percentage points.

^f Sites were chosen based on more than 100 SEER incident cases between 2001-2005.

* The APC is significantly different from zero (p<.05).

The APC for 1990-2005 is significantly different from the APC for 1975-1989 (p<.05).

@ The APC for 1990-2005 is significantly different from the APC for 1975-1989 (p<.10).

- Statistic not shown. Rate based on less than 16 cases for the time interval. Trend based on less than 10 cases for at least one year within the time interval.

Table XXIX-6

5-YEAR RELATIVE SURVIVAL RATES, 1996-2004^aBy International Classification of Childhood Cancer (ICCC)^b Selected Group and Subgroup^c and Sex and Age
Excluding benign brain and myelodysplastic syndromes

ICCC Group & Subgroup	Ages 0-19 by Sex			Both Sexes by Age					
	Total	Male	Female	<1	1-4	5-9	10-14	15-19	0-14
All ICCC Groups Combined	78.7	77.2	80.4	73.3	81.1	78.0	78.1	78.7	78.7
I Leukemia	76.8	75.6	78.2	55.0	86.9	82.6	71.8	53.8	80.9
I(a) Lymphoid leukemia	82.8	81.2	84.9	52.4	91.2	86.8	77.3	57.5	86.2
I(b) Acute myeloid leukemia	54.1	54.6	53.6	52.9	60.2	58.4	56.9	44.6	57.5
II Lymphomas and reticuloendothelial neo.	87.5	87.0	88.1	57.0 ^d	83.5	89.5	88.8	87.8	87.1
II(a) Hodgkin lymphoma	94.7	95.2	94.1	-	96.7	93.9	94.9	94.6	94.8
II(b,c,e) Non-Hodgkin lymphoma	80.6	80.6	80.5	-	81.6	87.2	82.8	75.8	83.6
III CNS & misc intracranial & intraspinal neo.	71.8	70.8	73.0	47.8	72.5	69.4	77.9	73.8	71.3
III(a) Ependymomas and choroid plexus tumor	72.0	68.2	78.0	45.4 ^e	69.2	71.8 ^d	77.7 ^d	89.4	69.0
III(b) Astrocytoma	83.1	81.0	85.3	70.2 ^d	91.6	82.5	83.2	74.9	85.0
III(c) Intracranial and intraspinal embryonal tumors	64.4	65.6	62.7	28.9 ^d	56.3	76.1	76.2	65.6	64.2
III(d) Other gliomas	53.4	55.3	51.3	49.0 ^e	47.2	33.5	66.1	76.3	47.4
IV Neuroblastoma and other peripheral nervous cell tumors	70.5	69.4	71.6	90.0	62.8	50.0 ^d	69.1 ^d	69.4 ^e	70.5
IV(a) Neuroblastoma and ganglioneuroblastoma	70.3	69.2	71.4	90.0	62.8	48.7 ^d	67.6 ^e	-	70.4
V Retinoblastoma	97.2	97.0	97.5	99.5	95.3	100.0	-	-	97.2
VI Renal tumors	87.6	88.7	86.6	84.7	90.5	87.6	64.1 ^d	80.4 ^d	88.0
VI(a) Nephroblastoma and other nonepithelial renal tumor	88.5	90.1	87.0	84.7	90.7	86.9	72.1 ^e	-	88.6
VII Hepatic tumors	52.4	49.0	56.8	68.9 ^d	66.7	32.6 ^e	14.6 ^d	20.4 ^d	58.2
VII(a) Hepatoblastoma	64.9	60.3	71.8	71.0 ^d	66.7	40.8 ^e	-	-	65.2
VIII Malignant bone tumors	65.2	63.8	67.3	-	58.9 ^d	73.9	65.2	62.3	67.3
VIII(a) Osteosarcoma	65.9	63.2	69.8	-	-	71.9 ^d	66.6	63.4	67.6
VIII(c) Ewing tumor and related sarcomas of bone	58.6	58.6	58.8	-	62.7 ^e	76.1 ^d	57.7	50.8 ^d	63.6
IX Soft tissue and other extraosseous sarcomas	69.2	68.4	70.2	62.0 ^d	71.3	73.5	71.4	65.9	70.8
IX(a) Rhabdomyosarcoma	59.8	62.4	56.1	54.5 ^d	69.6	67.3	53.5	42.5	63.9
X Germ cell & trophoblastic tumors & neo. of gonads	90.2	89.5	91.3	84.1	90.6	90.4	91.0	90.7	89.2
X(a) Intracranial and intraspinal germ-cell tumor	84.8	86.3	80.4 ^d	-	-	93.5	86.2	83.0	85.6
X(c) Malignant gonadal germ cell tumor	95.3	94.2	97.5	100.0	95.3	97.7	98.3	94.5	98.0
XI Other malignant epithelial neo. and melanomas	90.2	85.1	92.8	-	95.1	87.0	90.3	90.4	89.8
XI(b) Thyroid carcinoma	98.3	94.8	99.1	-	-	100.0	97.1	98.6	97.6
XI(d) Malignant melanoma	94.1	93.5	94.5	-	92.2 ^d	93.1	92.8	94.7	92.7

^a SEER 17 areas (San Francisco, Connecticut, Detroit, Hawaii, Iowa, New Mexico, Seattle, Utah, Atlanta, San Jose-Monterey, Los Angeles, Alaska Native Registry, Rural Georgia, California excluding SF/SJM/LA, Kentucky, Louisiana and New Jersey).

California excluding SF/SJM/LA, Kentucky, Louisiana, and New Jersey contribute cases for diagnosis years 2000-2004. The remaining 13 SEER Areas contribute cases for the entire period 1996-2004. Rates are based on follow-up of patients into 2005.

^b International Classification of Childhood Cancer is based on ICD-O-3. Steliarova-Foucher E, Stiller C, Lacour B, Kaatsch P. International Classification of Childhood Cancer, Third Edition. Cancer. April 1, 2005: Vol 103, No. 7, pg 1457-1467.

^c Classifications are shown for invasive cases only except as noted. For ICCC groups and subgroups that include *in situ* behavior, only invasive cases are shown.

^d The standard error of the survival rate is between 5 and 10 percentage points.

^e The standard error of the survival rate is greater than 10 percentage points.

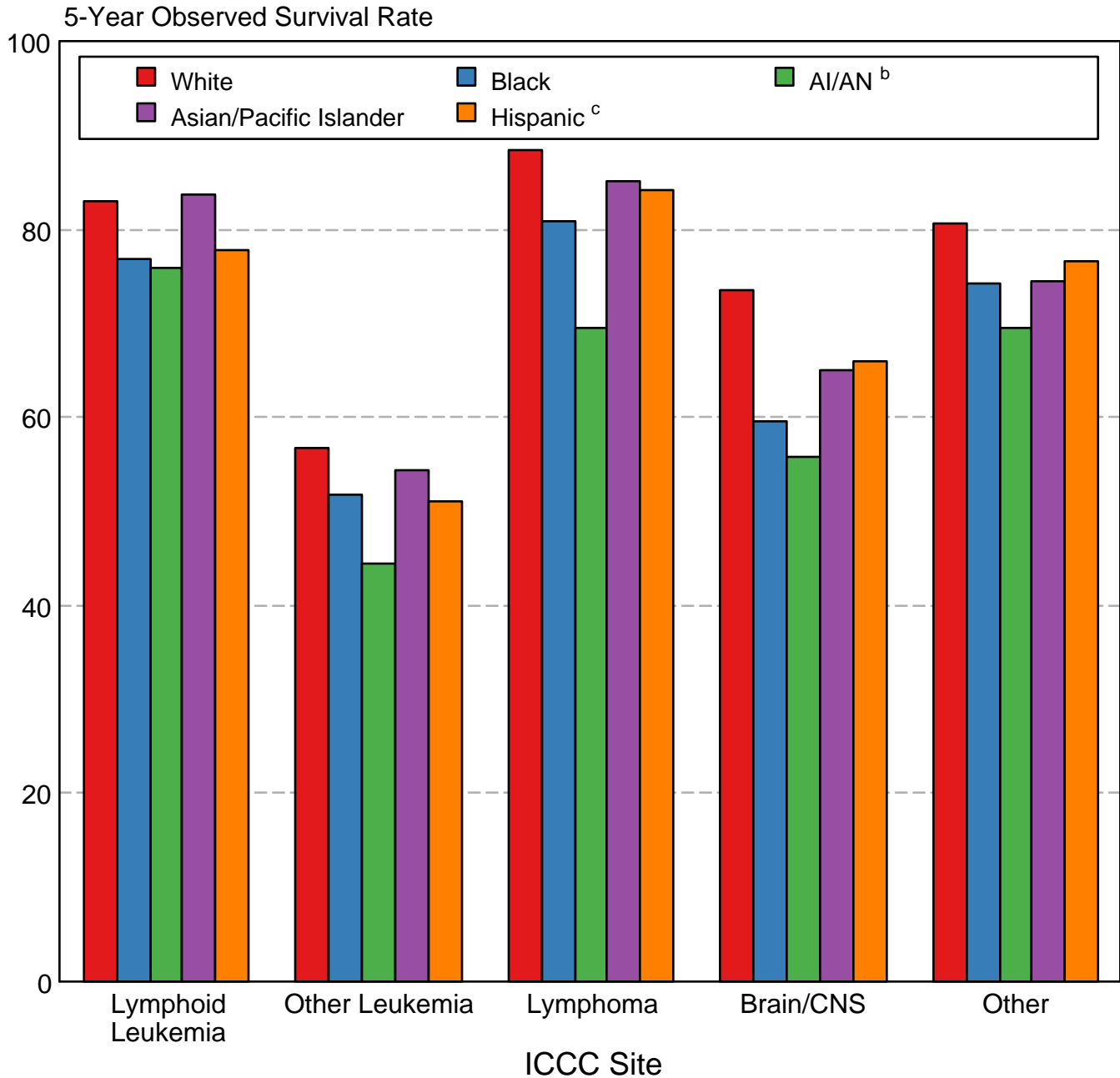
- Statistic could not be calculated due to fewer than 16 cases during the time period.

Neoplasms are abbreviated as neo.

Survival rates are relative rates expressed as percents.

Childhood Cancer: SEER Survival Rates 1996-2004

5-Year Observed Survival Rates by ICCC Group^a and Race/Ethnicity Both Sexes, Under 20 Years of Age



Source: SEER 17 areas (San Francisco, Connecticut, Detroit, Hawaii, Iowa, New Mexico, Seattle, Utah, Atlanta, San Jose-Monterey, Los Angeles, Alaska Native Registry, Rural Georgia, California excluding SF/SJM/LA, Kentucky, Louisiana, and New Jersey). California excluding SF/SJM/LA, Kentucky, Louisiana, and New Jersey contribute cases for diagnosis years 2000-2004. The remaining 13 SEER Areas contribute cases for the entire period 1996-2004.

International Classification of Childhood Cancer is based on ICD-O-3. Steliarova-Foucher E, Stiller C, Lacour B, Kaatsch P. International Classification of Childhood Cancer, Third Edition. Cancer. April 1, 2005; Vol 103, No. 7, pg 1457-1467.

^a Excludes myelodysplastic syndromes (MDS) and benign brain tumors.

^b American Indian/Alaska Native. Survival data for American Indian/Alaska Native are based on the CHSDA (Contract Health Service Delivery Area) counties.

^c Hispanic is not mutually exclusive from whites, blacks, Asian/Pacific Islanders, and American Indians/Alaska Natives. Survival data for Hispanics are based on NHIA and excludes cases from the Alaska Native Registry and Kentucky.