

Table XVII-1

MESOTHELIOMAS (Invasive)AGE-ADJUSTED SEER CANCER INCIDENCE RATES<sup>a</sup>, 1980-2005

By Race, Sex and Year of Diagnosis

Race/Sex	Year of Diagnosis												
	1980- 1981	1982- 1983	1984- 1985	1986- 1987	1988- 1989	1990- 1991	1992- 1993	1994- 1995	1996- 1997	1998- 1999	2000- 2001	2002- 2003	2004- 2005
<b>All Races</b>													
Both Sexes	0.9	0.9	1.0	1.0	1.1	1.1	1.1	1.2	1.1	1.1	1.1	1.0	1.1
Males	1.6	1.6	1.9	1.7	2.0	2.1	2.3	2.2	2.0	2.1	2.0	1.8	1.9
0-54	0.3	0.3	0.3	0.2	0.3	0.2	0.2	0.3	0.2	0.2	0.1	0.1	0.1
55-64	3.7	3.7	4.5	3.5	3.1	4.4	3.7	3.3	4.2	3.7	2.6	2.8	2.8
65-74	8.2	7.2	8.6	8.3	11.8	9.6	10.6	10.3	9.0	9.8	9.3	7.7	8.2
75-84	10.0	11.7	12.0	12.6	12.7	17.2	16.1	17.9	15.2	16.8	19.5	17.1	18.0
85+	-	-	-	-	12.8	12.0	20.5	12.4	15.8	15.9	14.1	12.9	18.3
Females	0.3	0.4	0.4	0.4	0.4	0.4	0.4	0.4	0.4	0.4	0.4	0.4	0.4
0-54	-	0.1	-	0.1	0.1	0.1	-	0.1	0.1	0.2	0.1	0.1	0.1
55-64	0.9	1.0	0.8	1.0	-	0.9	0.9	1.2	0.8	-	-	0.9	0.8
65-74	-	2.1	1.4	1.4	1.7	1.4	1.3	1.6	1.5	1.6	1.2	1.4	1.5
75-84	-	2.0	3.1	2.3	1.7	3.0	2.8	2.6	2.3	2.1	2.8	2.7	3.2
85+	-	-	-	-	-	-	-	-	-	-	2.9	-	-
<b>Whites</b>													
Both Sexes	0.9	1.0	1.1	1.0	1.1	1.2	1.2	1.2	1.2	1.2	1.2	1.1	1.2
Males	1.7	1.7	2.0	1.8	2.2	2.3	2.5	2.3	2.2	2.3	2.3	2.0	2.2
Females	0.3	0.5	0.4	0.5	0.4	0.5	0.4	0.5	0.4	0.4	0.4	0.4	0.5
<b>Blacks</b>													
Both Sexes	-	0.6	0.6	0.6	0.7	0.7	0.7	0.9	0.7	0.6	0.4	0.4	0.5
Males	-	-	-	-	-	1.5	1.3	1.8	1.1	1.3	-	-	0.9
Females	-	-	-	-	-	-	-	-	-	-	-	-	-

<sup>a</sup> SEER 9 areas (San Francisco, Connecticut, Detroit, Hawaii, Iowa, New Mexico, Seattle, Utah, and Atlanta). Rates are per 100,000 and are age-adjusted to the 2000 US Std Population (19 age groups - Census P25-1130).

- Statistic not shown. Rate based on less than 16 cases for the time interval.

Table XVII-2

MESOTHELIOMAAGE ADJUSTED SEER INCIDENCE<sup>a</sup> RATES BY YEAR, RACE AND SEX

	<u>All Races</u>			<u>Whites</u>			<u>Blacks</u>		
	<u>Total</u>	<u>Males</u>	<u>Females</u>	<u>Total</u>	<u>Males</u>	<u>Females</u>	<u>Total</u>	<u>Males</u>	<u>Females</u>
<u>AGE-ADJUSTED RATES</u>									
<u>YEAR OF DIAGNOSIS:</u>									
1975	0.6	1.0	0.3	0.6	1.0	0.3	-	-	-
1976	0.7	1.1	0.3	0.7	1.2	0.4	-	-	-
1977	0.6	1.0	0.3	0.6	1.1	0.3	-	-	-
1978	0.7	1.4	0.2	0.8	1.5	0.2	-	-	-
1979	0.8	1.5	0.3	0.8	1.6	0.3	-	-	-
1980	1.0	1.8	0.4	1.1	2.0	0.4	-	-	-
1981	0.8	1.4	0.3	0.8	1.5	0.3	-	-	-
1982	0.8	1.4	0.4	0.9	1.5	0.4	-	-	-
1983	1.0	1.9	0.5	1.1	2.0	0.5	-	-	-
1984	1.1	2.0	0.4	1.1	2.2	0.4	-	-	-
1985	0.9	1.7	0.4	1.0	1.7	0.4	-	-	-
1986	0.9	1.7	0.4	1.0	1.8	0.5	-	-	-
1987	1.0	1.7	0.4	1.0	1.8	0.5	-	-	-
1988	1.0	1.8	0.4	1.1	2.0	0.4	-	-	-
1989	1.1	2.2	0.4	1.2	2.4	0.4	-	-	-
1990	1.1	2.2	0.5	1.2	2.3	0.5	-	-	-
1991	1.1	2.1	0.4	1.2	2.2	0.5	-	-	-
1992	1.2	2.5	0.4	1.3	2.7	0.4	-	-	-
1993	1.1	2.0	0.4	1.1	2.2	0.4	-	-	-
1994	1.2	2.2	0.4	1.2	2.3	0.5	1.1	-	-
1995	1.2	2.2	0.5	1.2	2.3	0.5	-	-	-
1996	1.1	2.1	0.5	1.3	2.4	0.5	-	-	-
1997	1.0	1.9	0.4	1.1	2.1	0.4	0.9	-	-
1998	1.1	2.1	0.4	1.2	2.2	0.5	-	-	-
1999	1.1	2.2	0.4	1.2	2.3	0.4	-	-	-
2000	1.1	2.1	0.3	1.2	2.4	0.4	-	-	-
2001	1.1	2.0	0.4	1.2	2.2	0.4	-	-	-
2002	1.0	1.9	0.4	1.2	2.2	0.4	-	-	-
2003	0.9	1.7	0.4	1.0	1.8	0.4	-	-	-
2004	1.1	2.0	0.4	1.2	2.3	0.5	-	-	-
2005	1.0	1.9	0.4	1.2	2.1	0.5	-	-	-
1975-2005	1.0	1.9	0.4	1.1	2.0	0.4	0.6	1.1	0.3

<sup>a</sup> SEER 9 areas (San Francisco, Connecticut, Detroit, Hawaii, Iowa, New Mexico, Seattle, Utah, and Atlanta). Rates are per 100,000 and are age-adjusted to the 2000 US Std Population (19 age groups - Census P25-1130).

- Statistic not shown. Rate based on less than 16 cases for the time interval.

Table XVII-3  
MESOTHELIOMASEER INCIDENCE<sup>a</sup> RATES, AGE-ADJUSTED AND AGE-SPECIFIC RATES, BY RACE AND SEX

	All Races			Whites			Blacks		
	Total	Males	Females	Total	Males	Females	Total	Males	Females
<u>SEER INCIDENCE</u>									
<u>AGE AT DIAGNOSIS</u>									
AGE-ADJUSTED RATES, 2001-2005									
All ages	1.1	2.0	0.4	1.2	2.2	0.5	0.6	1.2	0.2
Under 65	0.3	0.4	0.2	0.3	0.5	0.2	0.2	0.3	0.1
65 and over	6.6	13.0	2.2	7.3	14.4	2.4	3.4	7.1	1.2
All ages(IARC world std) <sup>b</sup>	0.6	1.1	0.3	0.7	1.2	0.3	0.4	0.7	0.1
AGE-SPECIFIC RATES, 2001-2005									
<1	-	-	-	-	-	-	-	-	-
1-4	-	-	-	-	-	-	-	-	-
5-9	-	-	-	-	-	-	-	-	-
10-14	-	-	-	-	-	-	-	-	-
15-19	-	-	-	-	-	-	-	-	-
20-24	-	-	-	-	-	-	-	-	-
25-29	-	-	-	-	-	-	-	-	-
30-34	0.1	-	-	-	-	-	-	-	-
35-39	0.1	-	-	0.1	-	-	-	-	-
40-44	0.2	0.2	0.2	0.2	0.3	0.2	-	-	-
45-49	0.3	0.4	0.3	0.4	0.4	0.3	-	-	-
50-54	0.6	0.8	0.5	0.7	0.8	0.5	0.7	-	-
55-59	1.4	2.1	0.7	1.5	2.2	0.8	1.0	-	-
60-64	2.5	4.2	0.9	2.8	4.7	1.0	1.3	-	-
65-69	3.7	6.6	1.1	4.1	7.4	1.3	1.5	-	-
70-74	6.0	11.2	1.9	6.8	12.6	2.1	3.2	5.8	-
75-79	8.9	17.0	3.1	9.8	18.5	3.5	4.7	10.2	-
80-84	9.7	19.8	3.3	10.6	21.8	3.6	4.9	-	-
85+	6.7	16.3	2.2	7.2	17.8	2.4	-	-	-

<sup>a</sup> SEER 17 areas. Rates are per 100,000 and are age-adjusted to the 2000 US Std Population (19 age groups - Census P25-1130), unless noted.

<sup>b</sup> Rates are per 100,000 and are age-adjusted to the IARC world standard population.

- Statistic not shown. Rate based on less than 16 cases for the time interval.

Table XVII-4  
MESOTHELIOMA

## SURVIVAL RATES, BY RACE, SEX, DIAGNOSIS YEAR, STAGE AND AGE

	All Races			Whites			Blacks		
	Total	Males	Females	Total	Males	Females	Total	Males	Females
<u>5-YR RELATIVE SURVIVAL RATES</u>									
YEAR OF DIAGNOSIS:									
1960-1963 <sup>a</sup>	-	-	-	-	-	-	-	-	-
1970-1973 <sup>a</sup>	-	-	-	-	-	-	-	-	-
1975-1977 <sup>b</sup>	10.4	3.1	27.9 <sup>f</sup>	11.1	3.6	28.5 <sup>f</sup>	-	-	-
1978-1980 <sup>b</sup>	6.3	5.8	8.3	6.1	5.4	8.9	6.9 <sup>f</sup>	-	-
1981-1983 <sup>b</sup>	8.3	5.7	15.6	8.7	5.8	16.7	5.9 <sup>f</sup>	7.6 <sup>f</sup>	-
1984-1986 <sup>b</sup>	7.3	5.0	14.7	6.8	4.3	14.9	11.8 <sup>f</sup>	14.9 <sup>f</sup>	-
1987-1989 <sup>b</sup>	6.6	4.8	13.0	6.7	4.9	13.1	4.5	0.0	-
1990-1992 <sup>b</sup>	8.5	4.7	21.9	8.1	4.3	21.3	12.9 <sup>f</sup>	12.0 <sup>f</sup>	-
1993-1995 <sup>b</sup>	7.0	3.5	19.6	6.3	3.0	18.9	9.5 <sup>f</sup>	8.4 <sup>f</sup>	-
1996-2004 <sup>b</sup>	8.5	6.7	14.5 <sup>e</sup>	8.2	6.4 <sup>e</sup>	14.5	14.9 <sup>f</sup>	13.2 <sup>f</sup>	16.3 <sup>f</sup>
<u>5-YR PERIOD SURVIVAL RATES<sup>cd</sup></u>									
YEAR OF DIAGNOSIS:									
1996-2004	8.0	6.2	13.3	7.3	5.7	12.4	14.5	10.0	-
<u>5-YR RELATIVE SURVIVAL RATES, 1996-2004<sup>c</sup></u>									
AGE AT DIAGNOSIS:									
<45	38.4	32.8 <sup>f</sup>	44.8 <sup>f</sup>	36.1	32.1 <sup>f</sup>	41.1 <sup>f</sup>	-	-	-
45-54	16.6	11.6	24.6	15.8	11.0	23.7	34.7 <sup>g</sup>	-	-
55-64	9.4	7.3	17.7	8.6	6.5	18.0	13.9 <sup>f</sup>	9.4 <sup>f</sup>	-
65-74	5.1	5.1	5.6	5.2	5.0	6.3	5.8	5.3	-
75+	3.8	3.6	4.3	3.7	3.4	4.6	3.5	5.0 <sup>f</sup>	-
Under 65	15.3	10.7	26.8	14.3	9.9	26.1	23.8 <sup>f</sup>	15.3 <sup>f</sup>	39.1 <sup>g</sup>
65 and over	4.5	4.4	4.8	4.5	4.2	5.3	5.3	6.4	0.0

- <sup>a</sup> Rates are based on End Results data from a series of hospital registries and one population-based registry.
- <sup>b</sup> Rates are from the SEER 9 areas (San Francisco, Connecticut, Detroit, Hawaii, Iowa, New Mexico, Seattle, Utah, Atlanta).
- <sup>c</sup> Rates are based on follow-up of patients into 2005.
- <sup>d</sup> Rates are from the SEER 17 areas (San Francisco, Connecticut, Detroit, Hawaii, Iowa, New Mexico, Seattle, Utah, Atlanta, San Jose-Monterey, Los Angeles, Alaska Native Registry, Rural Georgia, California excluding SF/SJM/LA, Kentucky, Louisiana and New Jersey). California excluding SF/SJM/LA, Kentucky, Louisiana, and New Jersey contribute cases for diagnosis years 2000-2004. The remaining 13 SEER Areas contribute cases for the entire period 1996-2004. Rates are based on follow-up of patients into 2005.
- <sup>e</sup> Period survival provides a more up-to-date estimate of survival by piecing together the most recent conditional survival estimates from several cohorts. It is computed here using three calendar year blocks (2002-2004: 0-1 year survival), (2001-2003: 1-2 year survival), (2000-2002: 2-3 year survival), (1999-2001: 3-4 year survival), (1998-2000: 4-5 years survival).
- <sup>f</sup> The difference in rates between 1975-1977 and 1996-2004 is statistically significant (p<.05).
- <sup>g</sup> The standard error of the survival rate is between 5 and 10 percentage points.
- The standard error of the survival rate is greater than 10 percentage points.
- Statistic could not be calculated due to fewer than 16 cases during the time period.

Table XVII-5

MESOTHELIOMASURVIVAL RATES<sup>a</sup>

By Year of Diagnosis

All Races, Males and Females

Year of Diagnosis

	1975- 1979	1980- 1984	1985	1986	1987	1988	1989	1990	1991	1992	1993	1994	1995	1996	1997	1998	1999	2000	2001	2002	2003	2004
Relative Survival Rates (SEER <sup>b</sup> )																						
1-year	37.4	39.0	42.2	40.3	39.1	38.3	31.4	40.8	35.6	41.0	33.3	39.1	37.0	43.0	36.9	39.5	33.8	41.6	43.0	32.8	47.7	39.0
2-year	16.7	19.6	21.1	19.0	14.6	16.3	15.8	16.1	14.0	20.3	14.1	18.0	14.0	26.3	17.1	22.9	18.9	15.2	25.3	17.2	21.7	
3-year	11.1	12.3	14.4	12.4	8.6	11.6	9.6	10.9	11.9	13.2	9.1	12.7	12.1	17.8	10.7	15.7	13.1	10.5	15.3	7.1		
4-year	9.8	8.9	10.0	10.1	6.2	10.2	6.6	6.2	9.0	11.0	6.4	10.1	9.3	12.2	8.2	13.0	10.9	7.0	12.4			
5-year	8.4	7.6	7.4	8.6	5.0	9.9	5.1	6.2	8.9	9.9	4.4	8.8	7.6	10.6	6.7	13.0	9.2	3.0				
6-year	7.2	6.4	6.2	6.8	4.6	6.7	4.3	4.4	8.0	7.4	4.4	8.7	6.4	10.6	5.2	12.1	8.4					
7-year	6.9	5.9	4.8	6.2	4.0	5.5	4.3	3.2	7.7	7.0	4.4	8.2	5.6	9.2	3.4	11.8						
8-year	6.4	5.7	4.2	5.8	4.0	4.9	4.0	2.7	7.0	7.0	3.7	7.6	5.6	7.2	3.4							
9-year	6.2	5.5	3.5	5.8	3.5	4.9	4.0	2.7	5.2	7.0	3.7	7.6	4.4	5.5								
10-year	6.2	5.3	2.8	5.5	3.5	4.9	3.7	2.7	5.2	6.2	3.3	7.6	3.7									
11-year	6.2	5.3	2.8	5.5	3.5	4.9	3.7	2.7	5.0	5.8	3.3	7.6										
12-year	6.1	5.3	2.1	5.5	3.5	4.9	3.7	2.7	5.0	5.0	3.3											
13-year	6.0	5.3	2.1	5.5	3.5	4.9	3.7	2.7	5.0	5.0												
14-year	6.0	5.3	2.1	5.5	3.5	4.6	3.7	2.7	5.0													
15-year	6.0	5.2	2.1	5.5	3.5	4.6	3.7	2.7														
16-year	5.7	5.2	2.1	5.5	3.5	4.6	3.7															
17-year	5.7	5.2	2.1	5.5	3.5	4.6																
18-year	5.7	5.2	2.1	5.5	3.5																	
19-year	5.7	5.2	2.1	5.5																		
20-year	5.7	5.2	2.1																			

<sup>a</sup> Survival rates are relative rates expressed as percents.<sup>b</sup> Rates are from the SEER 9 areas (San Francisco, Connecticut, Detroit, Hawaii, Iowa, New Mexico, Seattle, Utah, and Atlanta).

Table XVII-6

MESOTHELIOMASURVIVAL RATES<sup>a</sup>

By Year of Diagnosis

All Races, Males

Year of Diagnosis

	1975- 1979	1980- 1984	1985	1986	1987	1988	1989	1990	1991	1992	1993	1994	1995	1996	1997	1998	1999	2000	2001	2002	2003	2004
Relative Survival Rates (SEER <sup>b</sup> )																						
1-year	35.8	37.5	41.6	35.3	40.4	35.9	29.8	37.2	31.4	36.6	35.4	34.7	36.3	46.3	34.2	35.1	32.0	42.0	39.1	31.8	46.6	38.1
2-year	12.0	16.6	21.1	11.4	13.5	13.6	14.9	12.8	8.6	15.4	14.0	11.5	11.2	25.9	14.6	18.4	14.6	14.3	21.7	16.3	18.1	
3-year	6.7	9.8	14.0	6.4	7.9	8.3	7.8	7.8	8.0	8.1	8.1	7.0	9.2	16.3	9.0	12.7	7.7	8.9	12.2	6.1		
4-year	5.7	7.1	10.0	3.8	4.6	7.0	6.1	4.5	4.3	6.4	5.3	4.0	6.1	11.3	6.6	10.5	5.4	6.5	9.6			
5-year	4.2	5.6	6.6	3.8	3.7	6.4	4.2	4.5	4.3	4.8	2.4	3.5	4.4	10.4	4.5	10.5	4.8	3.8				
6-year	3.5	4.7	5.0	3.1	3.0	2.9	3.0	3.3	4.3	2.9	2.4	3.5	3.7	10.4	2.4	8.6	4.8					
7-year	3.1	4.0	3.1	3.1	2.1	2.0	3.0	1.7	4.3	2.3	2.4	3.0	2.3	9.8	1.7	8.6						
8-year	2.5	3.8	3.1	3.1	2.1	2.0	3.0	0.9	4.3	2.3	1.0	2.4	2.3	7.1	1.7							
9-year	2.3	3.8	2.3	3.1	1.2	2.0	3.0	0.9	2.9	2.3	1.0	2.4	0.9	5.6								
10-year	2.3	3.8	2.3	2.7	1.2	2.0	2.8	0.9	2.9	1.9	1.0	2.4	0.0									
11-year	2.3	3.8	2.3	2.7	1.2	2.0	2.8	0.9	2.2	1.9	1.0	2.4										
12-year	2.3	3.8	2.3	2.7	1.2	2.0	2.8	0.9	2.2	1.9	1.0											
13-year	2.0	3.8	2.3	2.7	1.2	1.4	2.8	0.9	2.2	1.9												
14-year	2.0	3.8	2.3	2.7	1.2	0.0	2.8	0.9	2.2													
15-year	1.4	3.8	2.3	2.7	0.0	0.0	2.8	0.9														
16-year	1.4	3.8	2.3	2.7	0.0	0.0	2.8															
17-year	1.4	3.8	2.3	2.7	0.0	0.0																
18-year	1.4	3.8	2.3	2.7	0.0																	
19-year	1.4	3.8	2.3	2.7																		
20-year	1.4	3.8	2.3																			

<sup>a</sup> Survival rates are relative rates expressed as percents.<sup>b</sup> Rates are from the SEER 9 areas (San Francisco, Connecticut, Detroit, Hawaii, Iowa, New Mexico, Seattle, Utah, and Atlanta).

Table XVII-7  
MESOTHELIOMASURVIVAL RATES<sup>a</sup>

By Year of Diagnosis

All Races, Females

Year of Diagnosis

	1975- 1979	1980- 1984	1985	1986	1987	1988	1989	1990	1991	1992	1993	1994	1995	1996	1997	1998	1999	2000	2001	2002	2003	2004
Relative Survival Rates (SEER <sup>b</sup> )																						
1-year	42.5	43.9	44.1	53.3	35.1	47.0	38.8	53.1	50.7	60.3	25.9	57.2	39.2	32.6	48.6	55.9	41.9	39.7	54.6	36.1	50.6	42.0
2-year	31.5	29.9	21.2	38.7	18.2	25.5	19.9	27.2	33.1	41.8	14.5	44.3	23.6	27.3	27.8	39.2	37.5	19.2	35.6	20.0	32.0	
3-year	24.8	20.5	15.6	27.8	10.8	23.0	17.3	20.9	24.6	34.1	12.3	35.3	21.7	22.2	17.4	26.3	35.8	17.1	24.0	10.3		
4-year	22.2	15.0	9.7	26.0	10.8	20.9	8.9	11.9	24.6	30.3	10.3	33.9	20.1	14.9	14.7	22.1	34.0	8.8	20.3			
5-year	20.9	13.9	9.7	19.7	8.6	20.9	8.9	11.9	23.6	30.3	10.3	29.6	18.5	11.0	14.7	22.1	26.8	0.0				
6-year	18.1	11.3	9.7	15.3	8.6	18.9	8.9	7.5	19.0	26.2	10.3	28.0	16.2	9.2	14.7	22.1	21.4					
7-year	17.4	11.3	9.7	12.9	8.6	16.3	8.9	7.5	16.7	26.2	10.3	28.0	16.2	7.1	10.1	21.6						
8-year	17.1	11.3	7.5	10.8	8.6	13.4	6.8	7.5	14.4	26.2	10.3	26.5	16.2	7.1	10.1							
9-year	17.1	10.4	7.5	10.8	8.6	13.4	6.8	7.5	12.6	25.4	10.3	26.5	15.8	5.2								
11-year	16.2	8.6	4.1	10.8	8.6	13.4	6.8	7.5	12.6	22.8	10.3	26.3	15.8									
10-year	15.7	8.6	4.1	10.8	8.6	13.4	6.8	7.5	12.6	19.8	10.3	26.3										
12-year	15.7	8.6	0.0	10.8	8.6	13.4	6.8	7.5	12.6	16.0	10.3											
13-year	15.7	8.6	0.0	10.8	8.6	13.4	6.8	7.5	12.6	16.0												
14-year	15.7	8.6	0.0	10.8	8.6	13.4	6.8	7.5	12.6													
15-year	15.7	8.6	0.0	10.8	8.6	13.4	6.8	7.5														
16-year	15.7	8.6	0.0	10.8	8.6	13.4	6.8															
17-year	15.6	8.6	0.0	10.8	8.6	13.4																
18-year	15.6	8.6	0.0	10.8	8.6																	
19-year	15.6	8.6	0.0	10.8																		
20-year	15.6	8.6	0.0																			

<sup>a</sup> Survival rates are relative rates expressed as percents.<sup>b</sup> Rates are from the SEER 9 areas (San Francisco, Connecticut, Detroit, Hawaii, Iowa, New Mexico, Seattle, Utah, and Atlanta).

Table XVII-8  
MESOTHELIOMA (Invasive)

Risk of Being Diagnosed With Cancer in 10, 20 and 30 Years, Lifetime Risk of Being Diagnosed with Cancer, and  
Lifetime Risk of Dying from Cancer Given Cancer Free At Current Age  
Both Sexes, 2003-2005 By Race/Ethnicity

Race/ Ethnicity	Current Age	Risk of Being Diagnosed with Cancer			Risk of Dying from Cancer	
		+10 yrs Percent ( 95% C.I. )	+20 yrs Percent ( 95% C.I. )	+30 yrs Percent ( 95% C.I. )	Eventually Percent ( 95% C.I. )	Eventually Percent ( 95% C.I. )
All Races	0	0.00 ( 0.00, 0.00 )	0.00 ( 0.00, 0.00 )	0.00 ( 0.00, 0.00 )	0.13 ( 0.12, 0.13 )	0.10 ( 0.10, 0.10 )
	10	0.00 ( 0.00, 0.00 )	0.00 ( 0.00, 0.00 )	0.00 ( 0.00, 0.00 )	0.13 ( 0.12, 0.13 )	0.10 ( 0.10, 0.10 )
	20	0.00 ( 0.00, 0.00 )	0.00 ( 0.00, 0.00 )	0.00 ( 0.00, 0.00 )	0.13 ( 0.12, 0.13 )	0.10 ( 0.10, 0.10 )
	30	0.00 ( 0.00, 0.00 )	0.00 ( 0.00, 0.00 )	0.01 ( 0.01, 0.01 )	0.13 ( 0.12, 0.13 )	0.10 ( 0.10, 0.10 )
	40	0.00 ( 0.00, 0.00 )	0.01 ( 0.01, 0.01 )	0.04 ( 0.04, 0.04 )	0.13 ( 0.12, 0.13 )	0.10 ( 0.10, 0.10 )
	50	0.01 ( 0.01, 0.01 )	0.04 ( 0.04, 0.04 )	0.09 ( 0.08, 0.09 )	0.13 ( 0.12, 0.14 )	0.10 ( 0.10, 0.10 )
	60	0.03 ( 0.03, 0.03 )	0.08 ( 0.08, 0.09 )	0.12 ( 0.12, 0.13 )	0.13 ( 0.12, 0.13 )	0.10 ( 0.10, 0.10 )
	70	0.06 ( 0.06, 0.07 )	0.11 ( 0.10, 0.11 )	- ( - , - )	0.11 ( 0.11, 0.12 )	0.09 ( 0.09, 0.09 )
80	0.06 ( 0.06, 0.07 )	- ( - , - )	- ( - , - )	0.07 ( 0.07, 0.08 )	0.06 ( 0.06, 0.06 )	
White	0	0.00 ( 0.00, 0.00 )	0.00 ( 0.00, 0.00 )	0.00 ( 0.00, 0.00 )	0.14 ( 0.13, 0.15 )	0.11 ( 0.10, 0.11 )
	10	0.00 ( 0.00, 0.00 )	0.00 ( 0.00, 0.00 )	0.00 ( 0.00, 0.00 )	0.14 ( 0.13, 0.15 )	0.11 ( 0.11, 0.11 )
	20	0.00 ( 0.00, 0.00 )	0.00 ( 0.00, 0.00 )	0.00 ( 0.00, 0.00 )	0.14 ( 0.13, 0.15 )	0.11 ( 0.11, 0.11 )
	30	0.00 ( 0.00, 0.00 )	0.00 ( 0.00, 0.00 )	0.01 ( 0.01, 0.01 )	0.14 ( 0.14, 0.15 )	0.11 ( 0.11, 0.11 )
	40	0.00 ( 0.00, 0.00 )	0.01 ( 0.01, 0.01 )	0.04 ( 0.04, 0.05 )	0.14 ( 0.14, 0.15 )	0.11 ( 0.11, 0.11 )
	50	0.01 ( 0.01, 0.01 )	0.04 ( 0.04, 0.04 )	0.10 ( 0.09, 0.10 )	0.14 ( 0.14, 0.15 )	0.11 ( 0.11, 0.11 )
	60	0.03 ( 0.03, 0.04 )	0.09 ( 0.09, 0.10 )	0.13 ( 0.13, 0.14 )	0.14 ( 0.14, 0.15 )	0.11 ( 0.11, 0.11 )
	70	0.07 ( 0.06, 0.07 )	0.12 ( 0.11, 0.12 )	- ( - , - )	0.12 ( 0.12, 0.13 )	0.10 ( 0.10, 0.10 )
80	0.07 ( 0.06, 0.07 )	- ( - , - )	- ( - , - )	0.08 ( 0.07, 0.09 )	0.07 ( 0.06, 0.07 )	
Black	0	0.00 ( 0.00, 0.00 )	0.00 ( 0.00, 0.00 )	0.00 ( 0.00, 0.00 )	0.06 ( 0.05, 0.07 )	0.03 ( 0.03, 0.04 )
	10	0.00 ( 0.00, 0.00 )	0.00 ( 0.00, 0.00 )	0.00 ( 0.00, 0.00 )	0.06 ( 0.05, 0.07 )	0.03 ( 0.03, 0.04 )
	20	0.00 ( 0.00, 0.00 )	0.00 ( 0.00, 0.00 )	0.00 ( 0.00, 0.00 )	0.06 ( 0.05, 0.07 )	0.03 ( 0.03, 0.04 )
	30	0.00 ( 0.00, 0.00 )	0.00 ( 0.00, 0.00 )	0.01 ( 0.01, 0.01 )	0.06 ( 0.05, 0.07 )	0.04 ( 0.03, 0.04 )
	40	0.00 ( 0.00, 0.00 )	0.01 ( 0.01, 0.01 )	0.02 ( 0.02, 0.03 )	0.06 ( 0.05, 0.08 )	0.04 ( 0.03, 0.04 )
	50	0.01 ( 0.01, 0.01 )	0.02 ( 0.02, 0.03 )	0.04 ( 0.04, 0.06 )	0.06 ( 0.05, 0.08 )	0.04 ( 0.03, 0.04 )
	60	0.01 ( 0.01, 0.02 )	0.04 ( 0.03, 0.05 )	0.06 ( 0.05, 0.07 )	0.06 ( 0.05, 0.08 )	0.04 ( 0.03, 0.04 )
	70	0.03 ( 0.02, 0.04 )	0.05 ( 0.04, 0.07 )	- ( - , - )	0.06 ( 0.04, 0.08 )	0.03 ( 0.03, 0.04 )
80	0.03 ( 0.02, 0.05 )	- ( - , - )	- ( - , - )	0.04 ( 0.03, 0.06 )	0.03 ( 0.02, 0.03 )	

Devcan Version 7.0.0, April 2008, National Cancer Institute (<http://srab.cancer.gov/devcan/>).

Source: Incidence data are from the SEER 17 areas (San Francisco, Connecticut, Detroit, Hawaii, Iowa, New Mexico, Seattle, Utah, Atlanta, San Jose-Monterey, Los Angeles, Alaska Native Registry, Rural Georgia, California excluding SF/SJM/LA, Kentucky, Louisiana and New Jersey). Mortality data are from the NCHS public use data file for the total US.

- Statistic could not be calculated.

A percent or confidence interval value of 0.00 represents a value that is below 0.005.



Table XVII-8 - continued  
 MESOTHELIOMA (Invasive)

Risk of Being Diagnosed With Cancer in 10, 20 and 30 Years, Lifetime Risk of Being Diagnosed with Cancer, and  
 Lifetime Risk of Dying from Cancer Given Cancer Free At Current Age  
 Both Sexes, 2003-2005 By Race/Ethnicity

Race/ Ethnicity	Current Age	Risk of Being Diagnosed with Cancer			Risk of Dying from Cancer	
		+10 yrs Percent ( 95% C.I. )	+20 yrs Percent ( 95% C.I. )	+30 yrs Percent ( 95% C.I. )	Eventually Percent ( 95% C.I. )	Eventually Percent ( 95% C.I. )
Asian/ Pacific Islander	0	0.00 ( 0.00, 0.00 )	0.00 ( 0.00, 0.00 )	0.00 ( 0.00, 0.00 )	0.05 ( 0.03, 0.08 )	0.03 ( 0.02, 0.06 )
	10	0.00 ( 0.00, 0.00 )	0.00 ( 0.00, 0.00 )	0.00 ( 0.00, 0.00 )	0.05 ( 0.03, 0.08 )	0.03 ( 0.02, 0.06 )
	20	0.00 ( 0.00, 0.00 )	0.00 ( 0.00, 0.00 )	0.00 ( 0.00, 0.01 )	0.05 ( 0.03, 0.08 )	0.03 ( 0.02, 0.06 )
	30	0.00 ( 0.00, 0.00 )	0.00 ( 0.00, 0.00 )	0.01 ( 0.00, 0.01 )	0.05 ( 0.03, 0.08 )	0.03 ( 0.02, 0.06 )
	40	0.00 ( 0.00, 0.00 )	0.01 ( 0.00, 0.01 )	0.02 ( 0.01, 0.02 )	0.05 ( 0.03, 0.08 )	0.03 ( 0.02, 0.06 )
	50	0.00 ( 0.00, 0.01 )	0.02 ( 0.01, 0.02 )	0.03 ( 0.02, 0.04 )	0.05 ( 0.03, 0.08 )	0.03 ( 0.02, 0.06 )
	60	0.01 ( 0.01, 0.02 )	0.03 ( 0.02, 0.04 )	0.04 ( 0.03, 0.05 )	0.04 ( 0.03, 0.08 )	0.03 ( 0.02, 0.06 )
	70	0.02 ( 0.01, 0.02 )	0.03 ( 0.02, 0.04 )	- ( - , - )	0.04 ( 0.02, 0.07 )	0.03 ( 0.01, 0.06 )
	80	0.01 ( 0.01, 0.03 )	- ( - , - )	- ( - , - )	0.02 ( 0.01, 0.07 )	0.02 ( 0.00, 0.05 )
American Indian/ Alaska Native <sup>a</sup>	0	0.00 ( 0.00, 0.02 )	0.00 ( 0.00, 0.02 )	0.00 ( 0.00, 0.02 )	0.10 ( 0.04, 0.39 )	0.03 ( 0.01, 0.11 )
	10	0.00 ( 0.00, 0.01 )	0.00 ( 0.00, 0.01 )	0.00 ( 0.00, 0.01 )	0.10 ( 0.04, 0.39 )	0.03 ( 0.01, 0.11 )
	20	0.00 ( 0.00, 0.01 )	0.00 ( 0.00, 0.01 )	0.00 ( 0.00, 0.02 )	0.10 ( 0.04, 0.40 )	0.03 ( 0.01, 0.11 )
	30	0.00 ( 0.00, 0.01 )	0.00 ( 0.00, 0.02 )	0.01 ( 0.00, 0.04 )	0.10 ( 0.04, 0.40 )	0.03 ( 0.01, 0.11 )
	40	0.00 ( 0.00, 0.02 )	0.01 ( 0.00, 0.04 )	0.03 ( 0.01, 0.07 )	0.11 ( 0.04, 0.41 )	0.03 ( 0.01, 0.12 )
	50	0.01 ( 0.00, 0.04 )	0.03 ( 0.01, 0.07 )	0.07 ( 0.02, 0.15 )	0.11 ( 0.04, 0.43 )	0.03 ( 0.01, 0.12 )
	60	0.02 ( 0.00, 0.06 )	0.06 ( 0.02, 0.14 )	0.10 ( 0.04, 0.24 )	0.10 ( 0.04, 0.45 )	0.03 ( 0.01, 0.13 )
	70	0.05 ( 0.01, 0.14 )	0.10 ( 0.03, 0.25 )	- ( - , - )	0.10 ( 0.03, 0.51 )	0.03 ( 0.01, 0.15 )
	80	0.07 ( 0.01, 0.26 )	- ( - , - )	- ( - , - )	0.07 ( 0.01, 0.64 )	0.01 ( 0.00, 0.19 )
Hispanic <sup>b</sup>	0	0.00 ( 0.00, 0.00 )	0.00 ( 0.00, 0.00 )	0.00 ( 0.00, 0.00 )	0.13 ( 0.11, 0.16 )	0.07 ( 0.06, 0.08 )
	10	0.00 ( 0.00, 0.00 )	0.00 ( 0.00, 0.00 )	0.00 ( 0.00, 0.00 )	0.13 ( 0.11, 0.16 )	0.07 ( 0.06, 0.08 )
	20	0.00 ( 0.00, 0.00 )	0.00 ( 0.00, 0.00 )	0.00 ( 0.00, 0.01 )	0.13 ( 0.11, 0.16 )	0.07 ( 0.06, 0.08 )
	30	0.00 ( 0.00, 0.00 )	0.00 ( 0.00, 0.01 )	0.01 ( 0.01, 0.02 )	0.13 ( 0.11, 0.16 )	0.07 ( 0.06, 0.08 )
	40	0.00 ( 0.00, 0.01 )	0.01 ( 0.01, 0.02 )	0.04 ( 0.03, 0.05 )	0.13 ( 0.11, 0.16 )	0.07 ( 0.06, 0.08 )
	50	0.01 ( 0.01, 0.01 )	0.04 ( 0.03, 0.04 )	0.09 ( 0.07, 0.10 )	0.13 ( 0.11, 0.16 )	0.07 ( 0.06, 0.08 )
	60	0.03 ( 0.02, 0.03 )	0.08 ( 0.07, 0.09 )	0.12 ( 0.10, 0.14 )	0.13 ( 0.11, 0.16 )	0.07 ( 0.06, 0.08 )
	70	0.06 ( 0.05, 0.07 )	0.10 ( 0.08, 0.12 )	- ( - , - )	0.11 ( 0.09, 0.15 )	0.06 ( 0.05, 0.08 )
	80	0.06 ( 0.04, 0.08 )	- ( - , - )	- ( - , - )	0.07 ( 0.05, 0.11 )	0.04 ( 0.03, 0.05 )

Devcan Version 7.0.0, April 2008, National Cancer Institute (<http://srab.cancer.gov/devcan/>).

Source: Incidence data are from the SEER 17 areas (San Francisco, Connecticut, Detroit, Hawaii, Iowa, New Mexico, Seattle, Utah, Atlanta, San Jose-Monterey, Los Angeles, Alaska Native Registry, Rural Georgia, California excluding SF/SJM/LA, Kentucky, Louisiana and New Jersey). Mortality data are from the NCHS public use data file for the total US.

<sup>a</sup> Underlying incidence and mortality data for American Indian/Alaska Native are based on the CHSDA (Contract Health Service Delivery Area) counties.

<sup>b</sup> Hispanic is not mutually exclusive from whites, blacks, Asian/Pacific Islanders, and American Indians/Alaska Natives. Underlying incidence data for Hispanics are based on NHIA and exclude cases from the Alaska Native Registry and Kentucky. Underlying mortality data for Hispanics exclude deaths from Minnesota, New Hampshire and North Dakota.

- Statistic could not be calculated.

A percent or confidence interval value of 0.00 represents a value that is below 0.005.

Table XVII-8 - continued

## MESOTHELIOMA (Invasive)

Risk of Being Diagnosed With Cancer in 10, 20 and 30 Years, Lifetime Risk of Being Diagnosed with Cancer, and  
Lifetime Risk of Dying from Cancer Given Cancer Free At Current Age  
Males, 2003-2005 By Race/Ethnicity

Race/ Ethnicity	Current Age	Risk of Being Diagnosed with Cancer				Risk of Dying from Cancer	
		+10 yrs Percent ( 95% C.I. )	+20 yrs Percent ( 95% C.I. )	+30 yrs Percent ( 95% C.I. )	Eventually Percent ( 95% C.I. )	Eventually Percent ( 95% C.I. )	
All Races	0	0.00 ( 0.00, 0.00 )	0.00 ( 0.00, 0.00 )	0.00 ( 0.00, 0.00 )	0.21 ( 0.20, 0.22 )	0.17 ( 0.16, 0.17 )	
	10	0.00 ( 0.00, 0.00 )	0.00 ( 0.00, 0.00 )	0.00 ( 0.00, 0.00 )	0.21 ( 0.20, 0.22 )	0.17 ( 0.16, 0.17 )	
	20	0.00 ( 0.00, 0.00 )	0.00 ( 0.00, 0.00 )	0.00 ( 0.00, 0.00 )	0.21 ( 0.20, 0.23 )	0.17 ( 0.17, 0.17 )	
	30	0.00 ( 0.00, 0.00 )	0.00 ( 0.00, 0.00 )	0.02 ( 0.02, 0.02 )	0.22 ( 0.21, 0.23 )	0.17 ( 0.17, 0.18 )	
	40	0.00 ( 0.00, 0.00 )	0.02 ( 0.02, 0.02 )	0.06 ( 0.06, 0.07 )	0.22 ( 0.21, 0.23 )	0.17 ( 0.17, 0.18 )	
	50	0.01 ( 0.01, 0.02 )	0.06 ( 0.06, 0.07 )	0.15 ( 0.14, 0.16 )	0.23 ( 0.21, 0.24 )	0.18 ( 0.17, 0.18 )	
	60	0.05 ( 0.05, 0.06 )	0.15 ( 0.14, 0.15 )	0.21 ( 0.20, 0.22 )	0.23 ( 0.22, 0.24 )	0.18 ( 0.18, 0.19 )	
	70	0.11 ( 0.10, 0.12 )	0.19 ( 0.18, 0.20 )	- ( - , - )	0.21 ( 0.20, 0.22 )	0.17 ( 0.17, 0.18 )	
80	0.12 ( 0.11, 0.13 )	- ( - , - )	- ( - , - )	0.15 ( 0.14, 0.16 )	0.13 ( 0.12, 0.13 )		
White	0	0.00 ( 0.00, 0.00 )	0.00 ( 0.00, 0.00 )	0.00 ( 0.00, 0.00 )	0.23 ( 0.22, 0.25 )	0.18 ( 0.18, 0.19 )	
	10	0.00 ( 0.00, 0.00 )	0.00 ( 0.00, 0.00 )	0.00 ( 0.00, 0.00 )	0.24 ( 0.22, 0.25 )	0.18 ( 0.18, 0.19 )	
	20	0.00 ( 0.00, 0.00 )	0.00 ( 0.00, 0.00 )	0.00 ( 0.00, 0.00 )	0.24 ( 0.23, 0.25 )	0.19 ( 0.18, 0.19 )	
	30	0.00 ( 0.00, 0.00 )	0.00 ( 0.00, 0.00 )	0.02 ( 0.02, 0.02 )	0.24 ( 0.23, 0.25 )	0.19 ( 0.18, 0.19 )	
	40	0.00 ( 0.00, 0.00 )	0.02 ( 0.02, 0.02 )	0.07 ( 0.06, 0.07 )	0.24 ( 0.23, 0.26 )	0.19 ( 0.19, 0.20 )	
	50	0.02 ( 0.01, 0.02 )	0.07 ( 0.06, 0.07 )	0.17 ( 0.16, 0.18 )	0.25 ( 0.24, 0.26 )	0.20 ( 0.19, 0.20 )	
	60	0.06 ( 0.05, 0.06 )	0.16 ( 0.15, 0.17 )	0.23 ( 0.22, 0.25 )	0.25 ( 0.24, 0.26 )	0.20 ( 0.19, 0.20 )	
	70	0.12 ( 0.12, 0.13 )	0.21 ( 0.20, 0.22 )	- ( - , - )	0.23 ( 0.22, 0.24 )	0.18 ( 0.18, 0.19 )	
80	0.13 ( 0.12, 0.14 )	- ( - , - )	- ( - , - )	0.16 ( 0.15, 0.18 )	0.13 ( 0.13, 0.14 )		
Black	0	0.00 ( 0.00, 0.00 )	0.00 ( 0.00, 0.00 )	0.00 ( 0.00, 0.00 )	0.09 ( 0.07, 0.12 )	0.06 ( 0.05, 0.07 )	
	10	0.00 ( 0.00, 0.00 )	0.00 ( 0.00, 0.00 )	0.00 ( 0.00, 0.00 )	0.09 ( 0.07, 0.12 )	0.06 ( 0.05, 0.07 )	
	20	0.00 ( 0.00, 0.00 )	0.00 ( 0.00, 0.00 )	0.00 ( 0.00, 0.01 )	0.09 ( 0.07, 0.12 )	0.06 ( 0.05, 0.07 )	
	30	0.00 ( 0.00, 0.00 )	0.00 ( 0.00, 0.01 )	0.02 ( 0.01, 0.02 )	0.10 ( 0.08, 0.12 )	0.06 ( 0.06, 0.07 )	
	40	0.00 ( 0.00, 0.01 )	0.02 ( 0.01, 0.02 )	0.04 ( 0.03, 0.05 )	0.10 ( 0.08, 0.13 )	0.06 ( 0.06, 0.07 )	
	50	0.01 ( 0.01, 0.02 )	0.04 ( 0.03, 0.05 )	0.07 ( 0.06, 0.10 )	0.10 ( 0.08, 0.13 )	0.07 ( 0.06, 0.08 )	
	60	0.03 ( 0.02, 0.04 )	0.07 ( 0.05, 0.10 )	0.10 ( 0.08, 0.13 )	0.10 ( 0.08, 0.14 )	0.07 ( 0.06, 0.08 )	
	70	0.06 ( 0.04, 0.08 )	0.10 ( 0.07, 0.13 )	- ( - , - )	0.10 ( 0.07, 0.14 )	0.07 ( 0.06, 0.08 )	
80	0.07 ( 0.04, 0.11 )	- ( - , - )	- ( - , - )	0.08 ( 0.04, 0.14 )	0.06 ( 0.04, 0.08 )		

Devcan Version 7.0.0, April 2008, National Cancer Institute (<http://srab.cancer.gov/devcan/>).

Source: Incidence data are from the SEER 17 areas (San Francisco, Connecticut, Detroit, Hawaii, Iowa, New Mexico, Seattle, Utah, Atlanta, San Jose-Monterey, Los Angeles, Alaska Native Registry, Rural Georgia, California excluding SF/SJM/LA, Kentucky, Louisiana and New Jersey). Mortality data are from the NCHS public use data file for the total US.

- Statistic could not be calculated.

A percent or confidence interval value of 0.00 represents a value that is below 0.005.

Table XVII-8 - continued  
MESOTHELIOMA (Invasive)

Risk of Being Diagnosed With Cancer in 10, 20 and 30 Years, Lifetime Risk of Being Diagnosed with Cancer, and  
 Lifetime Risk of Dying from Cancer Given Cancer Free At Current Age  
 Males, 2003-2005 By Race/Ethnicity

Race/ Ethnicity	Current Age	Risk of Being Diagnosed with Cancer				Risk of Dying from Cancer	
		+10 yrs Percent ( 95% C.I. )	+20 yrs Percent ( 95% C.I. )	+30 yrs Percent ( 95% C.I. )	Eventually Percent ( 95% C.I. )	Eventually Percent ( 95% C.I. )	
Asian/ Pacific Islander	0	0.00 ( 0.00, 0.00 )	0.00 ( 0.00, 0.00 )	0.00 ( 0.00, 0.00 )	0.09 ( 0.06, 0.15 )	0.06 ( 0.04, 0.11 )	
	10	0.00 ( 0.00, 0.00 )	0.00 ( 0.00, 0.00 )	0.00 ( 0.00, 0.00 )	0.09 ( 0.06, 0.15 )	0.06 ( 0.04, 0.11 )	
	20	0.00 ( 0.00, 0.00 )	0.00 ( 0.00, 0.00 )	0.00 ( 0.00, 0.01 )	0.09 ( 0.06, 0.15 )	0.06 ( 0.04, 0.11 )	
	30	0.00 ( 0.00, 0.00 )	0.00 ( 0.00, 0.01 )	0.01 ( 0.00, 0.01 )	0.09 ( 0.06, 0.15 )	0.06 ( 0.04, 0.11 )	
	40	0.00 ( 0.00, 0.01 )	0.01 ( 0.00, 0.01 )	0.03 ( 0.02, 0.04 )	0.09 ( 0.06, 0.15 )	0.06 ( 0.04, 0.11 )	
	50	0.01 ( 0.00, 0.01 )	0.02 ( 0.01, 0.04 )	0.05 ( 0.04, 0.08 )	0.09 ( 0.06, 0.15 )	0.06 ( 0.04, 0.11 )	
	60	0.02 ( 0.01, 0.03 )	0.05 ( 0.03, 0.07 )	0.07 ( 0.05, 0.10 )	0.09 ( 0.05, 0.15 )	0.06 ( 0.03, 0.11 )	
	70	0.04 ( 0.02, 0.06 )	0.06 ( 0.04, 0.09 )	- ( - , - )	0.08 ( 0.04, 0.15 )	0.05 ( 0.03, 0.11 )	
	80	0.03 ( 0.01, 0.06 )	- ( - , - )	- ( - , - )	0.05 ( 0.02, 0.14 )	0.04 ( 0.01, 0.12 )	
American Indian/ Alaska Native <sup>a</sup>	0	0.00 ( 0.00, 0.05 )	0.00 ( 0.00, 0.05 )	0.00 ( 0.00, 0.05 )	0.09 ( 0.03, 0.75 )	0.02 ( 0.01, 0.21 )	
	10	0.00 ( 0.00, 0.02 )	0.00 ( 0.00, 0.02 )	0.00 ( 0.00, 0.03 )	0.09 ( 0.03, 0.76 )	0.02 ( 0.01, 0.22 )	
	20	0.00 ( 0.00, 0.02 )	0.00 ( 0.00, 0.03 )	0.01 ( 0.00, 0.04 )	0.09 ( 0.03, 0.77 )	0.02 ( 0.01, 0.22 )	
	30	0.00 ( 0.00, 0.03 )	0.01 ( 0.00, 0.04 )	0.02 ( 0.00, 0.07 )	0.09 ( 0.03, 0.79 )	0.02 ( 0.01, 0.23 )	
	40	0.01 ( 0.00, 0.04 )	0.02 ( 0.00, 0.07 )	0.04 ( 0.01, 0.13 )	0.10 ( 0.03, 0.82 )	0.02 ( 0.01, 0.24 )	
	50	0.01 ( 0.00, 0.06 )	0.04 ( 0.01, 0.13 )	0.09 ( 0.02, 0.25 )	0.09 ( 0.02, 0.86 )	0.02 ( 0.00, 0.25 )	
	60	0.03 ( 0.00, 0.12 )	0.09 ( 0.02, 0.26 )	0.09 ( 0.02, 0.34 )	0.09 ( 0.02, 0.93 )	0.02 ( 0.00, 0.28 )	
	70	0.07 ( 0.01, 0.26 )	0.08 ( 0.01, 0.36 )	- ( - , - )	0.08 ( 0.01, 1.09 )	0.01 ( 0.00, 0.33 )	
	80	0.01 ( 0.00, 0.39 )	- ( - , - )	- ( - , - )	0.01 ( 0.00, 1.53 )	0.00 ( 0.00, 0.51 )	
Hispanic <sup>b</sup>	0	0.00 ( 0.00, 0.00 )	0.00 ( 0.00, 0.00 )	0.00 ( 0.00, 0.00 )	0.19 ( 0.16, 0.25 )	0.12 ( 0.10, 0.14 )	
	10	0.00 ( 0.00, 0.00 )	0.00 ( 0.00, 0.00 )	0.00 ( 0.00, 0.00 )	0.19 ( 0.16, 0.25 )	0.12 ( 0.10, 0.14 )	
	20	0.00 ( 0.00, 0.00 )	0.00 ( 0.00, 0.00 )	0.01 ( 0.00, 0.01 )	0.19 ( 0.16, 0.25 )	0.12 ( 0.10, 0.14 )	
	30	0.00 ( 0.00, 0.00 )	0.01 ( 0.00, 0.01 )	0.02 ( 0.01, 0.03 )	0.20 ( 0.16, 0.26 )	0.12 ( 0.10, 0.15 )	
	40	0.00 ( 0.00, 0.01 )	0.02 ( 0.01, 0.02 )	0.06 ( 0.04, 0.07 )	0.20 ( 0.16, 0.26 )	0.12 ( 0.10, 0.15 )	
	50	0.01 ( 0.01, 0.02 )	0.05 ( 0.04, 0.07 )	0.13 ( 0.11, 0.16 )	0.20 ( 0.16, 0.26 )	0.12 ( 0.11, 0.15 )	
	60	0.04 ( 0.03, 0.06 )	0.13 ( 0.10, 0.16 )	0.18 ( 0.15, 0.22 )	0.20 ( 0.16, 0.26 )	0.13 ( 0.11, 0.15 )	
	70	0.10 ( 0.07, 0.12 )	0.16 ( 0.13, 0.20 )	- ( - , - )	0.18 ( 0.14, 0.25 )	0.12 ( 0.10, 0.15 )	
	80	0.09 ( 0.06, 0.13 )	- ( - , - )	- ( - , - )	0.11 ( 0.07, 0.21 )	0.07 ( 0.05, 0.11 )	

Devcan Version 7.0.0, April 2008, National Cancer Institute (<http://srab.cancer.gov/devcan/>).

Source: Incidence data are from the SEER 17 areas (San Francisco, Connecticut, Detroit, Hawaii, Iowa, New Mexico, Seattle, Utah, Atlanta, San Jose-Monterey, Los Angeles, Alaska Native Registry, Rural Georgia, California excluding SF/SJM/LA, Kentucky, Louisiana and New Jersey). Mortality data are from the NCHS public use data file for the total US.

<sup>a</sup> Underlying incidence and mortality data for American Indian/Alaska Native are based on the CHSDA (Contract Health Service Delivery Area) counties.

<sup>b</sup> Hispanic is not mutually exclusive from whites, blacks, Asian/Pacific Islanders, and American Indians/Alaska Natives. Underlying incidence data for Hispanics are based on NHIA and exclude cases from the Alaska Native Registry and Kentucky. Underlying mortality data for Hispanics exclude deaths from Minnesota, New Hampshire and North Dakota.

- Statistic could not be calculated.

A percent or confidence interval value of 0.00 represents a value that is below 0.005.

Table XVII-8 - continued

## MESOTHELIOMA (Invasive)

Risk of Being Diagnosed With Cancer in 10, 20 and 30 Years, Lifetime Risk of Being Diagnosed with Cancer, and  
Lifetime Risk of Dying from Cancer Given Cancer Free At Current Age  
Females, 2003-2005 By Race/Ethnicity

Race/ Ethnicity	Current Age	Risk of Being Diagnosed with Cancer				Risk of Dying from Cancer	
		+10 yrs Percent ( 95% C.I. )	+20 yrs Percent ( 95% C.I. )	+30 yrs Percent ( 95% C.I. )	Eventually Percent ( 95% C.I. )	Eventually Percent ( 95% C.I. )	
All Races	0	0.00 ( 0.00, 0.00 )	0.00 ( 0.00, 0.00 )	0.00 ( 0.00, 0.00 )	0.05 ( 0.05, 0.06 )	0.04 ( 0.03, 0.04 )	
	10	0.00 ( 0.00, 0.00 )	0.00 ( 0.00, 0.00 )	0.00 ( 0.00, 0.00 )	0.05 ( 0.05, 0.06 )	0.04 ( 0.03, 0.04 )	
	20	0.00 ( 0.00, 0.00 )	0.00 ( 0.00, 0.00 )	0.00 ( 0.00, 0.00 )	0.05 ( 0.05, 0.06 )	0.04 ( 0.04, 0.04 )	
	30	0.00 ( 0.00, 0.00 )	0.00 ( 0.00, 0.00 )	0.01 ( 0.01, 0.01 )	0.05 ( 0.05, 0.06 )	0.04 ( 0.04, 0.04 )	
	40	0.00 ( 0.00, 0.00 )	0.01 ( 0.01, 0.01 )	0.02 ( 0.01, 0.02 )	0.05 ( 0.05, 0.06 )	0.04 ( 0.04, 0.04 )	
	50	0.01 ( 0.00, 0.01 )	0.01 ( 0.01, 0.02 )	0.03 ( 0.03, 0.04 )	0.05 ( 0.05, 0.06 )	0.04 ( 0.03, 0.04 )	
	60	0.01 ( 0.01, 0.01 )	0.03 ( 0.03, 0.03 )	0.04 ( 0.04, 0.05 )	0.05 ( 0.04, 0.05 )	0.04 ( 0.03, 0.04 )	
	70	0.02 ( 0.02, 0.02 )	0.04 ( 0.03, 0.04 )	- ( - , - )	0.04 ( 0.04, 0.05 )	0.03 ( 0.03, 0.03 )	
80	0.02 ( 0.02, 0.03 )	- ( - , - )	- ( - , - )	0.03 ( 0.02, 0.03 )	0.02 ( 0.02, 0.02 )		
White	0	0.00 ( 0.00, 0.00 )	0.00 ( 0.00, 0.00 )	0.00 ( 0.00, 0.00 )	0.06 ( 0.05, 0.06 )	0.04 ( 0.04, 0.04 )	
	10	0.00 ( 0.00, 0.00 )	0.00 ( 0.00, 0.00 )	0.00 ( 0.00, 0.00 )	0.06 ( 0.05, 0.06 )	0.04 ( 0.04, 0.04 )	
	20	0.00 ( 0.00, 0.00 )	0.00 ( 0.00, 0.00 )	0.00 ( 0.00, 0.00 )	0.06 ( 0.05, 0.06 )	0.04 ( 0.04, 0.04 )	
	30	0.00 ( 0.00, 0.00 )	0.00 ( 0.00, 0.00 )	0.01 ( 0.01, 0.01 )	0.06 ( 0.05, 0.06 )	0.04 ( 0.04, 0.04 )	
	40	0.00 ( 0.00, 0.00 )	0.01 ( 0.01, 0.01 )	0.02 ( 0.02, 0.02 )	0.06 ( 0.05, 0.06 )	0.04 ( 0.04, 0.04 )	
	50	0.01 ( 0.00, 0.01 )	0.02 ( 0.01, 0.02 )	0.04 ( 0.03, 0.04 )	0.06 ( 0.05, 0.06 )	0.04 ( 0.04, 0.04 )	
	60	0.01 ( 0.01, 0.01 )	0.03 ( 0.03, 0.04 )	0.05 ( 0.04, 0.05 )	0.05 ( 0.05, 0.06 )	0.04 ( 0.04, 0.04 )	
	70	0.02 ( 0.02, 0.03 )	0.04 ( 0.04, 0.05 )	- ( - , - )	0.05 ( 0.04, 0.05 )	0.03 ( 0.03, 0.04 )	
80	0.02 ( 0.02, 0.03 )	- ( - , - )	- ( - , - )	0.03 ( 0.02, 0.03 )	0.02 ( 0.02, 0.02 )		
Black	0	0.00 ( 0.00, 0.00 )	0.00 ( 0.00, 0.00 )	0.00 ( 0.00, 0.00 )	0.03 ( 0.02, 0.04 )	0.01 ( 0.01, 0.02 )	
	10	0.00 ( 0.00, 0.00 )	0.00 ( 0.00, 0.00 )	0.00 ( 0.00, 0.00 )	0.03 ( 0.02, 0.04 )	0.01 ( 0.01, 0.02 )	
	20	0.00 ( 0.00, 0.00 )	0.00 ( 0.00, 0.00 )	0.00 ( 0.00, 0.00 )	0.03 ( 0.02, 0.04 )	0.01 ( 0.01, 0.02 )	
	30	0.00 ( 0.00, 0.00 )	0.00 ( 0.00, 0.00 )	0.00 ( 0.00, 0.01 )	0.03 ( 0.02, 0.04 )	0.01 ( 0.01, 0.02 )	
	40	0.00 ( 0.00, 0.00 )	0.00 ( 0.00, 0.01 )	0.01 ( 0.00, 0.01 )	0.03 ( 0.02, 0.04 )	0.01 ( 0.01, 0.02 )	
	50	0.00 ( 0.00, 0.01 )	0.01 ( 0.00, 0.01 )	0.02 ( 0.01, 0.03 )	0.03 ( 0.02, 0.05 )	0.01 ( 0.01, 0.02 )	
	60	0.00 ( 0.00, 0.01 )	0.02 ( 0.01, 0.03 )	0.02 ( 0.01, 0.04 )	0.03 ( 0.02, 0.05 )	0.01 ( 0.01, 0.02 )	
	70	0.01 ( 0.01, 0.03 )	0.02 ( 0.01, 0.04 )	- ( - , - )	0.03 ( 0.02, 0.05 )	0.01 ( 0.01, 0.01 )	
80	0.01 ( 0.01, 0.03 )	- ( - , - )	- ( - , - )	0.02 ( 0.01, 0.04 )	0.01 ( 0.01, 0.02 )		

Devcan Version 7.0.0, April 2008, National Cancer Institute (<http://srab.cancer.gov/devcan/>).

Source: Incidence data are from the SEER 17 areas (San Francisco, Connecticut, Detroit, Hawaii, Iowa, New Mexico, Seattle, Utah, Atlanta, San Jose-Monterey, Los Angeles, Alaska Native Registry, Rural Georgia, California excluding SF/SJM/LA, Kentucky, Louisiana and New Jersey). Mortality data are from the NCHS public use data file for the total US.

- Statistic could not be calculated.

A percent or confidence interval value of 0.00 represents a value that is below 0.005.

Table XVII-8 - continued  
MESOTHELIOMA (Invasive)

Risk of Being Diagnosed With Cancer in 10, 20 and 30 Years, Lifetime Risk of Being Diagnosed with Cancer, and  
 Lifetime Risk of Dying from Cancer Given Cancer Free At Current Age  
 Females, 2003-2005 By Race/Ethnicity

Race/ Ethnicity	Current Age	Risk of Being Diagnosed with Cancer				Risk of Dying from Cancer	
		+10 yrs Percent ( 95% C.I. )	+20 yrs Percent ( 95% C.I. )	+30 yrs Percent ( 95% C.I. )	Eventually Percent ( 95% C.I. )	Eventually Percent ( 95% C.I. )	
Asian/ Pacific Islander	0	0.00 ( 0.00, 0.00 )	0.00 ( 0.00, 0.00 )	0.00 ( 0.00, 0.01 )	0.01 ( 0.01, 0.06 )	0.01 ( 0.00, 0.05 )	
	10	0.00 ( 0.00, 0.00 )	0.00 ( 0.00, 0.00 )	0.00 ( 0.00, 0.01 )	0.01 ( 0.01, 0.06 )	0.01 ( 0.00, 0.05 )	
	20	0.00 ( 0.00, 0.00 )	0.00 ( 0.00, 0.00 )	0.00 ( 0.00, 0.01 )	0.01 ( 0.01, 0.06 )	0.01 ( 0.00, 0.05 )	
	30	0.00 ( 0.00, 0.00 )	0.00 ( 0.00, 0.01 )	0.00 ( 0.00, 0.01 )	0.01 ( 0.01, 0.06 )	0.01 ( 0.00, 0.05 )	
	40	0.00 ( 0.00, 0.00 )	0.00 ( 0.00, 0.01 )	0.01 ( 0.00, 0.02 )	0.01 ( 0.01, 0.06 )	0.01 ( 0.00, 0.05 )	
	50	0.00 ( 0.00, 0.01 )	0.01 ( 0.00, 0.02 )	0.01 ( 0.00, 0.02 )	0.01 ( 0.00, 0.06 )	0.01 ( 0.00, 0.05 )	
	60	0.01 ( 0.00, 0.01 )	0.01 ( 0.00, 0.02 )	0.01 ( 0.00, 0.02 )	0.01 ( 0.00, 0.06 )	0.01 ( 0.00, 0.05 )	
	70	0.00 ( 0.00, 0.01 )	0.00 ( 0.00, 0.01 )	- ( - , - )	0.00 ( 0.00, 0.06 )	0.00 ( 0.00, 0.05 )	
	80	0.00 ( 0.00, 0.01 )	- ( - , - )	- ( - , - )	0.00 ( 0.00, 0.07 )	0.00 ( 0.00, 0.05 )	
American Indian/ Alaska Native <sup>a</sup>	0	0.00 ( 0.00, 0.05 )	0.00 ( 0.00, 0.05 )	0.00 ( 0.00, 0.05 )	0.11 ( 0.03, 0.63 )	0.04 ( 0.01, 0.18 )	
	10	0.00 ( 0.00, 0.02 )	0.00 ( 0.00, 0.02 )	0.00 ( 0.00, 0.03 )	0.11 ( 0.03, 0.64 )	0.04 ( 0.01, 0.18 )	
	20	0.00 ( 0.00, 0.02 )	0.00 ( 0.00, 0.03 )	0.00 ( 0.00, 0.03 )	0.11 ( 0.03, 0.64 )	0.04 ( 0.01, 0.18 )	
	30	0.00 ( 0.00, 0.03 )	0.00 ( 0.00, 0.03 )	0.01 ( 0.00, 0.06 )	0.11 ( 0.03, 0.65 )	0.04 ( 0.01, 0.18 )	
	40	0.00 ( 0.00, 0.02 )	0.01 ( 0.00, 0.06 )	0.02 ( 0.00, 0.09 )	0.11 ( 0.03, 0.66 )	0.04 ( 0.01, 0.19 )	
	50	0.01 ( 0.00, 0.06 )	0.02 ( 0.00, 0.09 )	0.04 ( 0.01, 0.16 )	0.12 ( 0.03, 0.68 )	0.04 ( 0.01, 0.20 )	
	60	0.01 ( 0.00, 0.07 )	0.03 ( 0.00, 0.15 )	0.11 ( 0.02, 0.33 )	0.11 ( 0.02, 0.71 )	0.04 ( 0.01, 0.21 )	
	70	0.03 ( 0.00, 0.16 )	0.12 ( 0.02, 0.36 )	- ( - , - )	0.12 ( 0.02, 0.81 )	0.04 ( 0.01, 0.24 )	
	80	0.11 ( 0.01, 0.42 )	- ( - , - )	- ( - , - )	0.12 ( 0.01, 1.04 )	0.02 ( 0.00, 0.29 )	
Hispanic <sup>b</sup>	0	0.00 ( 0.00, 0.00 )	0.00 ( 0.00, 0.00 )	0.00 ( 0.00, 0.00 )	0.08 ( 0.06, 0.12 )	0.03 ( 0.02, 0.04 )	
	10	0.00 ( 0.00, 0.00 )	0.00 ( 0.00, 0.00 )	0.00 ( 0.00, 0.00 )	0.08 ( 0.06, 0.12 )	0.03 ( 0.02, 0.04 )	
	20	0.00 ( 0.00, 0.00 )	0.00 ( 0.00, 0.00 )	0.00 ( 0.00, 0.01 )	0.08 ( 0.06, 0.12 )	0.03 ( 0.02, 0.04 )	
	30	0.00 ( 0.00, 0.00 )	0.00 ( 0.00, 0.01 )	0.01 ( 0.01, 0.02 )	0.08 ( 0.06, 0.12 )	0.03 ( 0.02, 0.04 )	
	40	0.00 ( 0.00, 0.01 )	0.01 ( 0.01, 0.02 )	0.02 ( 0.01, 0.03 )	0.08 ( 0.06, 0.12 )	0.03 ( 0.02, 0.04 )	
	50	0.01 ( 0.00, 0.01 )	0.02 ( 0.01, 0.03 )	0.04 ( 0.03, 0.06 )	0.08 ( 0.06, 0.12 )	0.03 ( 0.02, 0.04 )	
	60	0.01 ( 0.01, 0.02 )	0.04 ( 0.03, 0.05 )	0.06 ( 0.05, 0.09 )	0.07 ( 0.05, 0.11 )	0.03 ( 0.02, 0.04 )	
	70	0.03 ( 0.02, 0.04 )	0.06 ( 0.04, 0.08 )	- ( - , - )	0.07 ( 0.04, 0.11 )	0.02 ( 0.01, 0.04 )	
	80	0.03 ( 0.02, 0.06 )	- ( - , - )	- ( - , - )	0.04 ( 0.02, 0.10 )	0.02 ( 0.01, 0.03 )	

Devcan Version 7.0.0, April 2008, National Cancer Institute (<http://srab.cancer.gov/devcan/>).

Source: Incidence data are from the SEER 17 areas (San Francisco, Connecticut, Detroit, Hawaii, Iowa, New Mexico, Seattle, Utah, Atlanta, San Jose-Monterey, Los Angeles, Alaska Native Registry, Rural Georgia, California excluding SF/SJM/LA, Kentucky, Louisiana and New Jersey). Mortality data are from the NCHS public use data file for the total US.

<sup>a</sup> Underlying incidence and mortality data for American Indian/Alaska Native are based on the CHSDA (Contract Health Service Delivery Area) counties.

<sup>b</sup> Hispanic is not mutually exclusive from whites, blacks, Asian/Pacific Islanders, and American Indians/Alaska Natives. Underlying incidence data for Hispanics are based on NHIA and exclude cases from the Alaska Native Registry and Kentucky. Underlying mortality data for Hispanics exclude deaths from Minnesota, New Hampshire and North Dakota.

- Statistic could not be calculated.

A percent or confidence interval value of 0.00 represents a value that is below 0.005.

Table XVII-9  
MESOTHELIOMA

SEER INCIDENCE  
AGE-ADJUSTED RATES AND TRENDS<sup>a</sup>  
By Race/Ethnicity and Sex

RACE/ETHNICITY	Rate 2001-2005 <sup>b</sup> Rate per 100,000 persons			Seer 13 Areas <sup>c</sup> Trend 1996-2005 AAPC (%)			SEER 9 Areas <sup>d</sup> Trend 1996-2005 AAPC (%)		
	Total	Males	Females	Total	Males	Females	Total	Males	Females
All Races	1.1	2.0	0.4	-1.0*	-1.3*	-0.4	-1.1*	-1.6*	-0.3
White	1.2	2.2	0.5	-0.6*	-1.0*	0.2	-0.6	-1.3	0.9*
White Hispanic <sup>e</sup>	1.1	1.9	0.5	-2.5*	-3.4*	-	-	-	-
White Non-Hispanic <sup>e</sup>	1.2	2.3	0.5	-0.5	-0.8*	0.1	-	-	-
Black	0.6	1.2	0.2	-3.8*	-	-	-6.8*	-7.6*	-
Asian/Pacific Islander	0.3	0.6	0.1	-	-	-	-	-	-
Amer Ind/Alaska Nat <sup>f</sup>	-	-	-	-	-	-	-	-	-
Hispanic <sup>e</sup>	1.1	1.8	0.5	-2.2*	-3.2*	-	-	-	-

The AAPC is the Average Annual Percent Change over the time interval. The AAPCs are calculated by the Joinpoint Regression Program Version 3.3, April 2008, National Cancer Institute.

- Statistic not shown. Rate based on less than 16 cases for the time interval. Trend based on less than 10 cases for at least one year within the time interval.

<sup>a</sup> Rates are age-adjusted to the 2000 US Std Population (19 age groups - Census P25-1130). Trends are based on rates age-adjusted to the 2000 US Std Population (19 age groups - Census P25-1130).

<sup>b</sup> Incidence data used in calculating the 2001-2005 rates are from the SEER 17 areas (San Francisco, Connecticut, Detroit, Hawaii, Iowa, New Mexico, Seattle, Utah, Atlanta, San Jose-Monterey, Los Angeles, Alaska Native Registry, Rural Georgia, California excluding SF/SJM/LA, Kentucky, Louisiana and New Jersey).

<sup>c</sup> The SEER 13 areas are San Francisco, Connecticut, Detroit, Hawaii, Iowa, New Mexico, Seattle, Utah, Atlanta, San Jose-Monterey, Los Angeles, Alaska Native Registry and Rural Georgia. The 1996-2005 AAPC trends are based on a Joinpoint analysis using diagnosis years 1992-2005.

<sup>d</sup> The SEER 9 areas are San Francisco, Connecticut, Detroit, Hawaii, Iowa, New Mexico, Seattle, Utah, and Atlanta. The 1996-2005 AAPC trends are based on a Joinpoint analysis using diagnosis years 1975-2005.

<sup>e</sup> Hispanic and Non-Hispanic are not mutually exclusive from whites, blacks, Asian/Pacific Islanders, and American Indians/Alaska Natives. Incidence data for Hispanics and Non-Hispanics are based on NHIA and exclude cases from the Alaska Native Registry and Kentucky.

<sup>f</sup> Incidence data for American Indian/Alaska Native are based on the CHSDA (Contract Health Service Delivery Area) counties.

\* The APC is significantly different from zero (p<.05).

Table XVII-10

MESOTHELIOMAAGE-ADJUSTED SEER INCIDENCE RATES<sup>a</sup>

By Registry, Race and Sex

	<u>All Races</u>			<u>Whites</u>			<u>Blacks</u>		
	<u>Total</u>	<u>Males</u>	<u>Females</u>	<u>Total</u>	<u>Males</u>	<u>Females</u>	<u>Total</u>	<u>Males</u>	<u>Females</u>
<u>SEER INCIDENCE RATES<sup>a</sup>, 2001-2005</u>									
<u>REGISTRY</u>									
Atlanta & Rural Georgia	0.6	1.1	0.3	0.8	1.4	0.4	-	-	-
Atlanta	0.6	1.1	0.3	0.8	1.4	0.4	-	-	-
Rural Georgia	-	-	-	-	-	-	-	-	-
California	1.0	1.9	0.4	1.1	2.1	0.4	0.7	1.4	-
Greater Bay Area	1.0	1.8	0.3	1.2	2.2	0.4	-	-	-
San Francisco-Oakland	1.0	2.0	0.3	1.3	2.5	0.4	-	-	-
San Jose-Monterey	0.9	1.5	0.4	1.0	1.8	0.4	-	-	-
Los Angeles	0.9	1.7	0.4	1.1	2.0	0.4	0.6	1.3	-
Greater California	1.1	2.0	0.4	1.2	2.1	0.4	0.8	1.5	-
Connecticut	1.3	2.4	0.6	1.4	2.5	0.6	-	-	-
Detroit	1.0	1.9	0.5	1.2	2.1	0.5	0.4	-	-
Hawaii	0.8	1.5	-	1.3	2.4	-	-	-	-
Iowa	0.8	1.3	0.4	0.8	1.3	0.4	-	-	-
Kentucky	0.8	1.4	0.4	0.8	1.4	0.4	-	-	-
Louisiana	1.3	2.4	0.5	1.4	2.6	0.5	0.8	1.6	-
New Jersey	1.6	3.1	0.6	1.8	3.4	0.6	0.8	1.7	-
New Mexico	0.8	1.5	0.3	0.8	1.5	-	-	-	-
Seattle-Puget Sound	1.5	2.8	0.5	1.6	3.0	0.5	-	-	-
Utah	0.8	1.4	0.4	0.9	1.5	0.4	-	-	-
9 SEER Areas <sup>b</sup>	1.0	1.9	0.4	1.1	2.1	0.4	0.4	0.8	-
11 SEER Areas <sup>b</sup>	1.0	1.8	0.4	1.1	2.1	0.4	0.5	0.9	0.2
13 SEER Areas <sup>b</sup>	1.0	1.8	0.4	1.1	2.1	0.4	0.5	0.9	0.2
17 SEER Areas <sup>b</sup>	1.1	2.0	0.4	1.2	2.2	0.5	0.6	1.2	0.2

<sup>a</sup> Rates are per 100,000 and are age-adjusted to the 2000 US Std Population (19 age groups - Census P25-1130)

<sup>b</sup> The SEER 9 areas are San Francisco, Connecticut, Detroit, Hawaii, Iowa, New Mexico, Seattle, Utah and Atlanta.

The SEER 11 areas comprise the SEER 9 areas plus San Jose-Monterey and Los Angeles.

The SEER 13 areas comprise the SEER 11 areas plus the Alaska Native Registry and Rural Georgia.

The SEER 17 areas comprise the SEER 13 areas plus California excluding SF/SJM/LA, Kentucky, Louisiana and New Jersey.

- Statistic not shown. Rate based on less than 16 cases for the time interval.

Table XVII-11  
MESOTHELIOMAEstimated United States Cancer Prevalence Counts<sup>a</sup> on January 1, 2005  
By Race/Ethnicity, Sex and Years Since Diagnosis

Years Since Diagnosis	0 to <5	5 to <10	10 to <15	15 to <20	20 to <25	25 to <30	0 to <15 <sup>e</sup>	0 to <30 <sup>e</sup>	>=30 <sup>g</sup>	Complete <sup>h</sup>
<u>Race/Sex</u>										
All Races <sup>b</sup>	2,847	646	368	214	178	110	3,860	4,361	+	+
Males	2,040	312	104	74	93	24	2,456	2,646	+	+
Females	807	334	264	140	85	86	1,404	1,715	+	+
White <sup>b</sup>	2,583	565	313	199	163	86	3,460	3,908	+	+
Males	1,868	279	80	59	78	11	2,226	2,374	+	+
Females	715	286	233	140	85	75	1,234	1,534	+	+
Black <sup>b</sup>	177	49	36	11	11	24	263	308	+	+
Males	118	12	24	11	11	13	154	189	+	+
Females	59	37	12	0	0	11	109	119	+	+
Asian/Pacific Islander <sup>c</sup>	49	15	4	+	+	+	68	+	+	+
Males	31	12	0	+	+	+	43	+	+	+
Females	18	3	4	+	+	+	25	+	+	+
Hispanic <sup>d</sup>	206	48	15	+	+	+	270	+	+	+
Males	139	34	0	+	+	+	173	+	+	+
Females	67	14	15	+	+	+	97	+	+	+

Estimated prevalence percent<sup>a</sup> on January 1, 2005, of the SEER 11 population diagnosed in the previous 15 years  
By Age at Prevalence, Race/Ethnicity and Sex

Age at Prevalence	Age Specific (Crude)										Age-Adjusted <sup>f</sup>
	All Ages	0-9	10-19	20-29	30-39	40-49	50-59	60-69	70-79	80+	All Ages
<u>Race/Sex</u>											
All Races <sup>c</sup>	0.0011%	-	-	-	0.0001%	0.0006%	0.0017%	0.0039%	0.0074%	0.0054%	0.0012%
Males	0.0015%	-	-	-	-	0.0005%	0.0019%	0.0057%	0.0132%	0.0103%	0.0018%
Females	0.0008%	-	-	-	0.0002%	0.0007%	0.0015%	0.0022%	0.0030%	0.0027%	0.0007%
White <sup>c</sup>	0.0013%	-	-	-	0.0002%	0.0006%	0.0019%	0.0041%	0.0083%	0.0060%	0.0013%
Males	0.0017%	-	-	-	-	0.0005%	0.0021%	0.0058%	0.0142%	0.0118%	0.0020%
Females	0.0009%	-	-	-	-	0.0008%	0.0016%	0.0024%	0.0036%	0.0029%	0.0008%
Black <sup>c</sup>	0.0007%	-	-	-	-	-	0.0016%	0.0050%	0.0039%	-	0.0009%
Males	0.0009%	-	-	-	-	-	-	0.0070%	0.0082%	-	0.0014%
Females	0.0005%	-	-	-	-	-	-	0.0034%	-	-	0.0006%
Asian/Pacific Islander <sup>c</sup>	0.0006%	-	-	-	-	-	-	0.0015%	0.0035%	-	0.0006%
Males	0.0008%	-	-	-	-	-	-	-	0.0082%	-	0.0010%
Females	0.0004%	-	-	-	-	-	-	-	-	-	0.0003%
Hispanic <sup>d</sup>	0.0006%	-	-	-	-	0.0007%	0.0022%	0.0022%	0.0106%	-	0.0013%
Males	0.0008%	-	-	-	-	-	0.0027%	0.0046%	0.0161%	-	0.0018%
Females	0.0005%	-	-	-	-	-	0.0018%	-	0.0067%	-	0.0008%

<sup>a</sup> US 2005 cancer prevalence counts are based on 2005 cancer prevalence proportions from the SEER registries and 1/1/2005 US population estimates based on the average of 2004 and 2005 population estimates from the US Bureau of the Census. Prevalence was calculated using the First Malignant Primary Only for a person.

<sup>b c d</sup> Statistics based on (b) SEER 9 Areas (c) SEER 11 Areas and Rural Georgia (d) NHIA for Hispanic for SEER 11 Areas and Rural Georgia.

<sup>e</sup> Maximum limited-duration prevalence: 30 years for 1975-2005 SEER 9 data; 15 years for 1990-2005 SEER 11 data (used to calculate prevalence for Hispanics and Asian Pacific Islanders).

<sup>f</sup> Percentages are age-adjusted to the 2000 US Standard Population (19 age groups - Census P25-1130) by 5-year age groups.

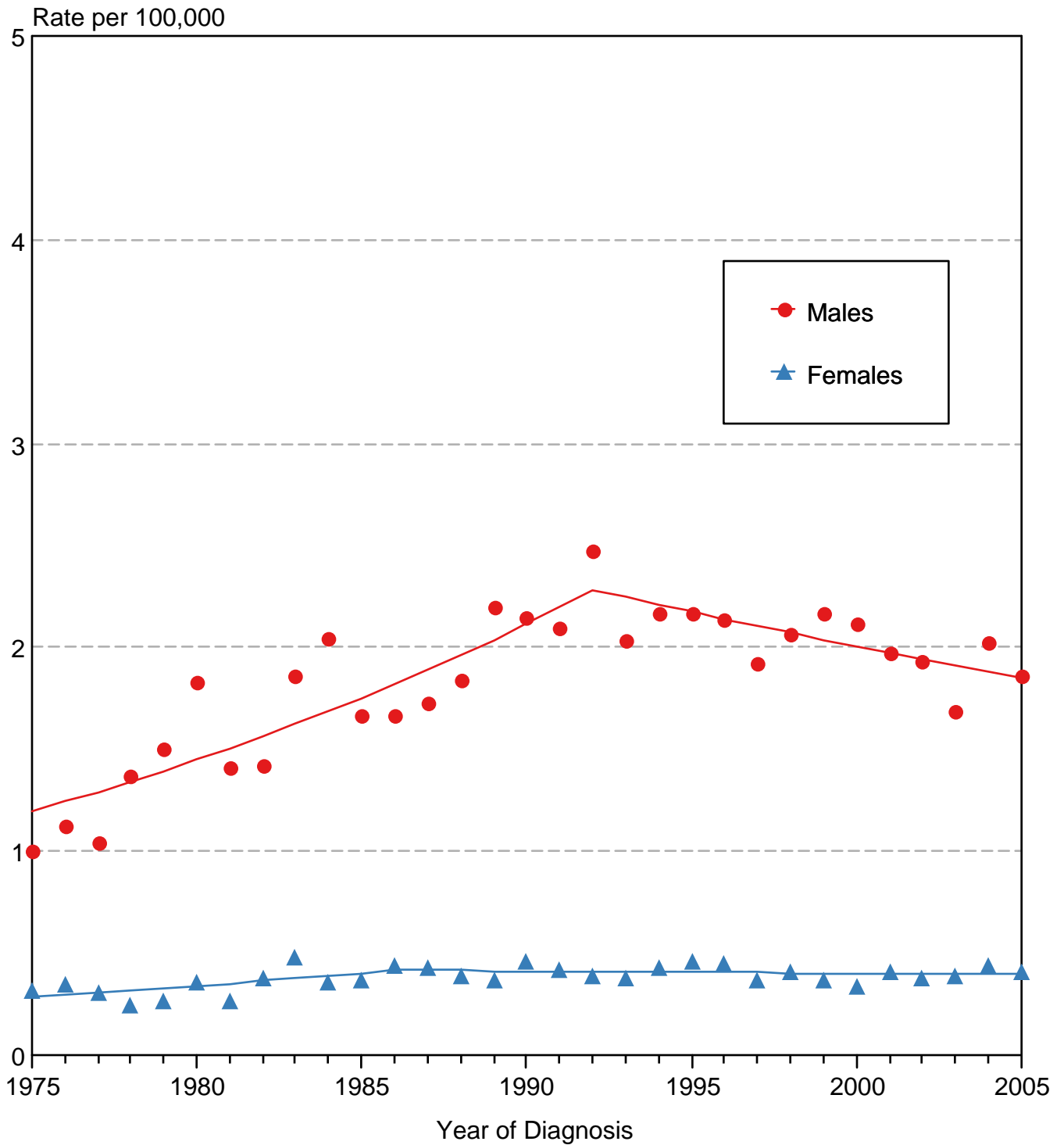
<sup>g h i</sup> (g) Cases diagnosed more than 30 years ago were estimated using the completeness index method (Capocaccia et. al. 1997, Merrill et. al. 2000). (h) Complete prevalence is obtained by summing 0 to <30 and >=30. (i) Age-specific completeness index was approximated using empirical data from historical Connecticut tumor registry.

- Statistic not shown. Statistic based on fewer than 5 cases estimated alive in SEER for the time interval.

+ Not available.



# Mesothelioma SEER Incidence, 1975-2005 All Races, By Sex



Source: SEER 9 areas. Rates are age-adjusted to the 2000 US Std Population (19 age groups - Census P25-1103). Regression lines are calculated using the Joinpoint Regression Program Version 3.3.1, April 2008, National Cancer Institute.