

# Collaborate

## CoP Model

Communities of Practice (CoPs) are defined as "a group of people who share a concern, a set of problems, or a passion about a topic, and who deepen their knowledge and expertise by interacting on an ongoing basis." (Wenger 2002)

The three distinct elements that make up a CoP are a *community* that enables interaction (such as discussions, collaborative activities, and relationship building), a shared *domain* of interest, and a shared *practice* of experiences, stories, tools, and ways of addressing recurring problems. This collaborative approach will allow the PHIN Community to grow and mature while focusing on efforts in sharing knowledge and solving problems.



Contact Us: [phin@cdc.gov](mailto:phin@cdc.gov)

# Get Involved

CoPs are open to everyone, easy to join, and your level of commitment is up to you. If you want to learn more about PHIN Communities of Practice, visit the PHIN CoP website where you will find a list of current PHIN CoPs as well as membership information. [www.cdc.gov/phin/communities](http://www.cdc.gov/phin/communities).

Your involvement in a PHIN Community of Practice will not only help set PHIN priorities, but also assist in strengthening and shaping the future of PHIN. Based on feedback received from public health and information technology partners, a collaborative approach toward implementing PHIN is needed. Communities of Practice provide that collaborative framework, enabling PHIN members to work together to identify and leverage best practices and standards for public health, information technology, and informatics as they relate to PHIN.



*"Coming together is a beginning; keeping together is progress; working together is success."*

—Henry Ford



Share  
Collaborate  
Learn



A Public Health Information Network (PHIN) Initiative



# The CoP Approach for PHIN

## Bringing PHIN Together

Communities of Practice (CoPs) leverage the processes of social learning and shared practices that emerge and evolve when people with common goals interact and strive to achieve them together. CoPs are forming to bring the PHIN community together and strengthen this network as members collaborate, share, and focus on issues prioritized by the community.

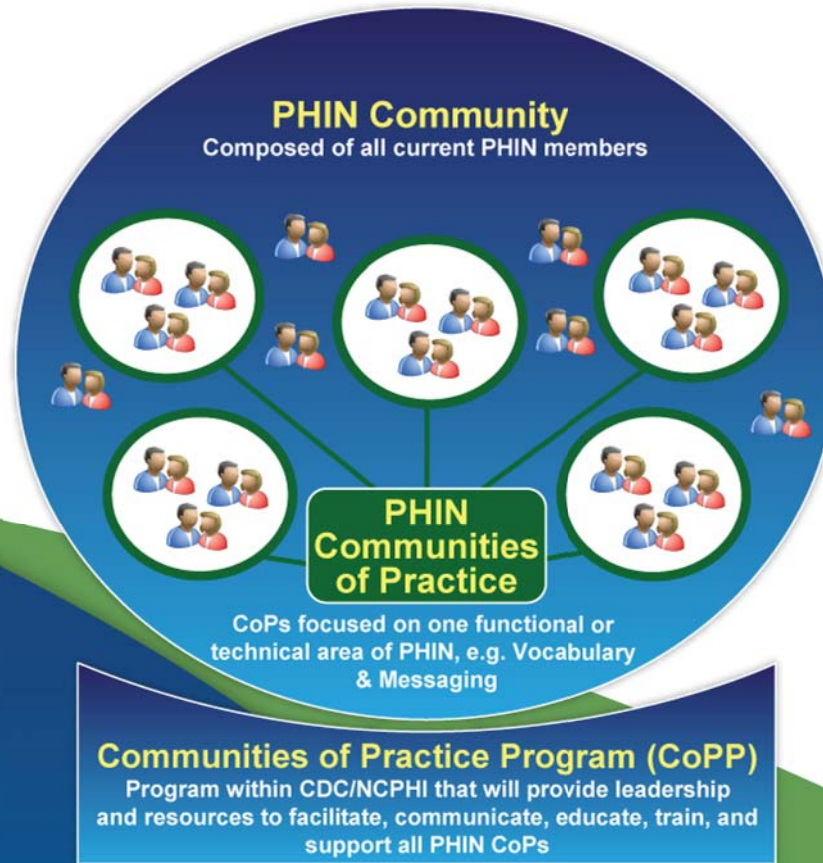


## Our Goal

To provide all members of PHIN, CDC and the Public Health Community with opportunities for: (1) knowledge sharing on topics relevant to PHIN, (2) creating awareness of current issues, and (3) fostering collaborative environments for interoperable public health informatics projects.

## CoP Resource Kit

The Community of Practice Program (CoPP) has developed a Resource Kit to provide members and interested parties details about PHIN Communities of Practice. The *PHIN CoP Resource Kit* offers a CoP overview, templates, and guides that can be used to develop a new community or enhance a community already in existence. The Resource Kit provides guidance to assist with all stages of CoP development: planning, launch, evolution, and evaluation.



The PHIN Community provides a participatory environment for PHIN members to learn, share expertise, and collaboratively develop solutions to improve public health's capacity to electronically use and exchange information.

## Communities of Practice Program (CoPP)

Located within the CDC National Center for Public Health Informatics (NCPHI), the CoP Program (CoPP) will provide all PHIN CoPs the leadership and resources for successful facilitation, communication, education, training, and evaluation of their CoPs.

## Benefits

Members	Organizations	Public Health
<ul style="list-style-type: none"> <li>- Continual Learning</li> <li>- Professional Development</li> <li>- Access to Expertise</li> <li>- Networking Opportunities</li> <li>- Sense of Professional Identity</li> </ul>	<ul style="list-style-type: none"> <li>- Reduced Time / Cost to Retrieve Information</li> <li>- Reduced Learning Curves</li> <li>- Knowledge Sharing</li> <li>- Coordination &amp; Synergies</li> <li>- Innovation</li> <li>- Industry Standards</li> </ul>	<ul style="list-style-type: none"> <li>- Consistent Communication &amp; Reporting</li> <li>- Improved Analytics Capability</li> <li>- Promotion of Standards</li> <li>- Link Geographically Dispersed Practitioners</li> <li>- Government Efficiency</li> </ul>