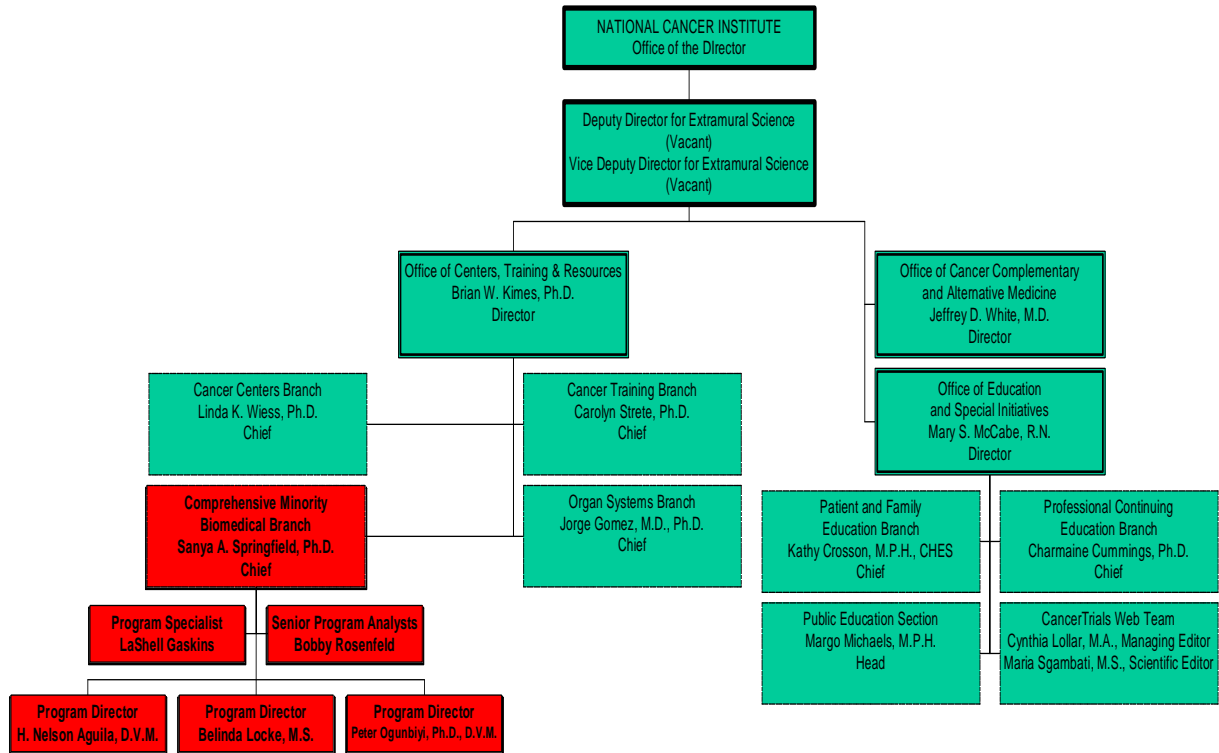


NATIONAL CANCER INSTITUTE (NCI)
OFFICE OF THE DEPUTY DIRECTOR OF EXTRAMURAL SCIENCES (ODDES)
OFFICE OF CENTERS, TRAINING, AND RESOURCES (OCTR)
COMPREHENSIVE MINORITY BIOMEDICAL BRANCH (CMBB)



To obtain more information about CMBB staff members, click on the CMBB staff box.