

Table XIX-1
NON-HODGKIN LYMPHOMA

TRENDS IN SEER INCIDENCE^a AND U.S. MORTALITY^b USING THE JOINPOINT REGRESSION PROGRAM, 1975-2004
WITH UP TO THREE JOINPOINTS BY RACE AND SEX

		<u>Joinpoint Segment 1</u>		<u>Joinpoint Segment 2</u>		<u>Joinpoint Segment 3</u>		<u>Joinpoint Segment 4</u>	
		Year	APC	Year	APC	Year	APC	Year	APC
<u>SEER Cancer Incidence^a</u>									
All Races	Male and Female	1975-1991	3.6*	1991-2004	0.5*				
All Races	Male	1975-1991	4.3*	1991-2004	0.1				
All Races	Female	1975-1990	2.9*	1990-2004	1.1*				
White	Male and Female	1975-1990	3.8*	1990-2004	0.6*				
White	Male	1975-1990	4.5*	1990-2004	0.3				
White	Female	1975-1990	2.9*	1990-2004	1.1*				
Black	Male and Female	1975-1995	4.6*	1995-2000	-3.0	2000-2004	5.2*		
Black	Male	1975-1995	5.5*	1995-2002	-4.0	2002-2004	17.3		
Black	Female	1975-2004	2.7*						
<u>SEER Delay-Adjusted Incidence^a</u>									
All Races	Male and Female	1975-1991	3.6*	1991-2004	0.7*				
All Races	Male	1975-1991	4.2*	1991-2004	0.3				
All Races	Female	1975-1988	3.0*	1988-2004	1.4*				
White	Male and Female	1975-1990	3.8*	1990-2004	0.9*				
White	Male	1975-1990	4.5*	1990-2004	0.5*				
White	Female	1975-1988	3.1*	1988-2004	1.4*				
Black	Male and Female	1975-1995	4.5*	1995-2002	-1.5	2002-2004	13.3		
Black	Male	1975-1995	5.6*	1995-2002	-3.8	2002-2004	19.1		
Black	Female	1975-2004	2.8*						
<u>U.S. Cancer Mortality^b</u>									
All Races	Male and Female	1975-1991	2.5*	1991-1997	1.7*	1997-2004	-3.3*		
All Races	Male	1975-1981	1.8*	1981-1990	3.0*	1990-1997	1.6*	1997-2004	-3.0*
All Races	Female	1975-1995	2.2*	1995-1998	-0.3	1998-2004	-3.8*		
White	Male and Female	1975-1991	2.5*	1991-1997	1.7*	1997-2004	-3.2*		
White	Male	1975-1996	2.5*	1996-2004	-2.6*				
White	Female	1975-1997	2.1*	1997-2004	-3.8*				
Black	Male and Female	1975-1997	2.6*	1997-2004	-3.5*				
Black	Male	1975-1997	2.7*	1997-2004	-4.4*				
Black	Female	1975-1996	2.7*	1996-2004	-1.9*				

Joinpoint Regression Program Version 3.0, April 2005, National Cancer Institute. (<http://srab.cancer.gov/joinpoint/>).

The APC is the Annual Percent Change based on rates age-adjusted to the 2000 US Std Population (19 age groups - Census P25-1130).

^a Trends are from the SEER 9 areas (San Francisco, Connecticut, Detroit, Hawaii, Iowa, New Mexico, Seattle, Utah, and Atlanta).

^b Trends are from the NCHS public use data file for the total US.

* The APC is significantly different from zero (p<.05).

Table XIX-2
NON-HODGKIN LYMPHOMA

AGE ADJUSTED SEER INCIDENCE^a RATES BY YEAR, RACE AND SEX

	All Races			Whites			Blacks		
	Total	Males	Females	Total	Males	Females	Total	Males	Females
<u>AGE-ADJUSTED RATES</u>									
YEAR OF DIAGNOSIS:									
1975	11.1	12.9	9.6	11.6	13.5	10.1	6.4	7.3	5.3
1976	11.2	12.8	10.0	11.6	13.2	10.5	6.0	7.4	4.9
1977	11.2	12.9	9.8	11.7	13.5	10.2	6.6	7.2	6.1
1978	11.9	14.3	10.1	12.5	14.8	10.7	7.2	9.5	5.2
1979	12.5	14.2	11.2	13.0	14.6	11.7	8.4	11.8	5.9
1980	12.6	15.0	10.8	13.0	15.3	11.2	8.8	10.9	7.2
1981	13.6	15.9	11.8	14.0	16.3	12.3	7.4	10.5	5.0
1982	13.4	15.6	11.6	14.0	16.4	12.0	10.3	10.2	10.0
1983	14.0	16.6	11.9	14.6	17.5	12.4	10.3	10.9	9.6
1984	15.2	18.3	12.8	15.9	19.1	13.5	9.4	12.5	6.9
1985	15.5	18.4	13.2	16.3	19.2	13.9	9.9	12.0	8.3
1986	15.9	19.4	13.0	16.8	20.5	13.7	10.6	13.1	8.5
1987	16.7	20.8	13.4	17.7	22.1	14.1	10.4	10.4	10.1
1988	17.2	21.3	14.1	18.2	22.4	14.9	11.6	15.8	8.5
1989	17.3	21.6	13.8	18.3	23.0	14.5	11.6	14.2	9.8
1990	18.5	23.0	14.8	19.4	24.0	15.5	13.8	17.5	10.9
1991	18.8	23.7	14.6	19.7	24.8	15.3	14.0	18.8	10.3
1992	18.6	23.0	15.0	19.6	23.9	15.9	13.6	18.7	9.6
1993	18.8	23.5	15.0	19.6	24.3	15.7	14.0	19.3	9.6
1994	19.9	24.9	15.8	20.6	25.6	16.5	14.3	21.4	8.6
1995	19.9	25.3	15.3	20.6	26.0	15.9	16.5	23.4	11.3
1996	19.3	24.2	15.4	20.2	25.2	16.1	15.1	18.9	11.9
1997	19.9	24.4	16.4	20.8	25.1	17.4	16.1	23.7	10.9
1998	19.4	22.8	16.6	20.4	23.9	17.6	13.9	16.3	12.0
1999	19.8	24.4	16.1	20.7	25.3	17.1	13.8	17.8	10.8
2000	19.6	24.1	15.9	20.7	25.3	16.9	13.9	18.2	10.6
2001	19.7	24.1	16.1	20.5	25.2	16.7	15.4	17.7	13.3
2002	19.8	23.7	16.7	20.9	25.0	17.6	14.1	16.9	12.0
2003	20.2	24.1	17.1	21.2	25.3	18.1	15.5	18.8	13.1
2004	20.4	24.7	17.1	21.3	25.5	17.9	17.4	22.8	13.4
1975-2004	17.2	21.0	14.2	17.9	21.8	14.8	12.6	16.1	9.8

^a SEER 9 areas (San Francisco, Connecticut, Detroit, Hawaii, Iowa, New Mexico, Seattle, Utah, and Atlanta). Rates are per 100,000 and are age-adjusted to the 2000 US Std Population (19 age groups - Census P25-1130).
- Statistic not shown. Rate based on less than 16 cases for the time interval.

Table XIX-3
NON-HODGKIN LYMPHOMA

AGE-ADJUSTED U.S. DEATH^a RATES BY YEAR, RACE AND SEX

	All Races			Whites			Blacks		
	Total	Males	Females	Total	Males	Females	Total	Males	Females
<u>AGE-ADJUSTED RATES</u>									
YEAR OF DEATH:									
1975	5.6	6.9	4.6	5.8	7.2	4.8	3.7	4.8	2.9
1976	5.7	6.9	4.8	5.9	7.1	5.0	3.5	4.5	2.8
1977	5.8	6.9	4.9	6.0	7.1	5.1	3.9	4.9	3.1
1978	5.9	7.3	4.9	6.2	7.5	5.1	3.9	5.4	2.8
1979	5.9	7.4	4.9	6.2	7.7	5.1	3.6	4.5	3.0
1980	6.2	7.5	5.3	6.5	7.7	5.5	4.0	5.1	3.1
1981	6.2	7.4	5.3	6.4	7.7	5.5	4.0	5.0	3.3
1982	6.6	8.0	5.5	6.8	8.3	5.7	4.1	5.2	3.3
1983	6.7	8.1	5.6	6.9	8.4	5.8	4.3	5.8	3.2
1984	6.8	8.2	5.8	7.1	8.5	6.0	4.2	5.3	3.4
1985	7.1	8.8	5.8	7.3	9.2	6.0	4.6	5.6	3.9
1986	7.3	9.0	6.0	7.6	9.3	6.3	4.9	6.6	3.7
1987	7.3	8.8	6.1	7.6	9.1	6.4	4.7	6.3	3.6
1988	7.5	9.3	6.2	7.8	9.6	6.5	5.0	6.8	3.7
1989	7.8	9.7	6.4	8.1	10.0	6.7	5.3	7.1	4.1
1990	7.9	10.0	6.3	8.2	10.3	6.6	5.4	7.1	4.2
1991	8.2	10.1	6.7	8.5	10.5	7.0	5.7	7.2	4.6
1992	8.2	10.3	6.7	8.5	10.7	7.0	5.6	7.2	4.5
1993	8.2	10.1	6.9	8.6	10.5	7.2	5.7	7.5	4.4
1994	8.6	10.8	7.1	9.0	11.2	7.4	5.5	6.8	4.6
1995	8.7	10.8	7.2	9.1	11.2	7.5	5.8	7.6	4.5
1996	8.8	10.9	7.1	9.1	11.3	7.5	6.2	8.2	4.7
1997	8.9	11.0	7.3	9.2	11.4	7.6	6.3	8.4	4.9
1998	8.7	10.9	7.1	9.0	11.3	7.4	6.0	7.5	4.9
1999	8.3	10.4	6.9	8.7	10.7	7.2	5.7	7.4	4.4
2000	8.2	10.2	6.7	8.5	10.6	7.0	5.2	6.6	4.2
2001	7.9	9.9	6.4	8.2	10.3	6.7	5.6	7.3	4.5
2002	7.6	9.6	6.2	7.9	10.0	6.4	5.4	6.9	4.4
2003	7.3	9.3	5.9	7.6	9.7	6.1	4.9	5.8	4.3
2004	7.0	8.8	5.7	7.3	9.2	5.9	5.0	6.2	4.1
1975-2004	7.5	9.3	6.2	7.8	9.7	6.5	5.1	6.5	4.0

^a NCHS public use data file for the total US. Rates are per 100,000 and are age-adjusted to the 2000 US Std Population (19 age groups - Census P25-1130).

- Statistic not shown. Rate based on less than 16 cases for the time interval.

Table XIX-4
NON-HODGKIN LYMPHOMA

SEER INCIDENCE^a AND U.S. DEATH^b RATES, AGE-ADJUSTED AND AGE-SPECIFIC RATES, BY RACE AND SEX

	All Races			Whites			Blacks		
	Total	Males	Females	Total	Males	Females	Total	Males	Females
<u>SEER INCIDENCE</u>									
<u>AGE AT DIAGNOSIS</u>									
AGE-ADJUSTED RATES, 2000-2004									
All ages	19.3	23.2	16.3	20.2	24.1	17.0	14.6	18.1	11.9
Under 65	9.5	11.4	7.7	9.8	11.6	8.0	9.4	11.8	7.3
65 and over	87.2	105.0	75.2	91.8	110.2	79.4	50.7	61.1	43.9
All ages(IARC world std) ^c	13.0	15.4	10.8	13.5	16.0	11.3	10.6	13.1	8.5
AGE-SPECIFIC RATES, 2000-2004									
<1	-	-	-	-	-	-	-	-	-
1-4	0.6	0.7	0.4	0.6	0.8	0.4	-	-	-
5-9	0.9	1.3	0.5	0.9	1.3	0.5	0.9	1.2	-
10-14	1.2	1.5	0.9	1.2	1.5	0.9	0.9	1.2	-
15-19	1.8	2.4	1.2	1.9	2.5	1.1	1.7	2.1	1.3
20-24	2.4	2.9	1.9	2.3	2.8	1.8	2.7	2.7	2.6
25-29	3.4	3.9	2.8	3.3	3.8	2.8	4.2	5.7	2.8
30-34	4.9	5.9	3.9	4.9	5.9	3.8	6.1	7.3	5.0
35-39	7.4	9.1	5.6	7.3	9.0	5.5	10.3	13.2	7.6
40-44	10.5	13.3	7.6	10.6	13.2	7.9	12.2	17.1	7.8
45-49	15.5	18.8	12.3	15.7	19.1	12.4	17.2	21.2	13.6
50-54	22.6	26.8	18.6	23.2	27.4	19.0	22.7	29.4	17.0
55-59	32.0	36.6	27.6	33.2	37.8	28.8	26.9	33.3	21.6
60-64	45.1	52.3	38.6	48.0	55.3	41.3	32.1	37.9	27.4
65-69	63.4	72.7	55.4	67.8	77.0	59.7	41.9	52.1	34.2
70-74	80.0	94.3	68.6	84.3	99.3	72.2	52.9	64.9	44.5
75-79	100.8	120.2	87.2	105.8	125.5	91.9	57.3	67.9	50.7
80-84	112.1	138.1	95.9	117.6	145.1	100.6	52.2	62.9	46.5
85+	102.0	133.3	87.8	106.1	139.4	91.3	52.4	59.2	49.7
<u>U.S. MORTALITY</u>									
<u>AGE AT DEATH</u>									
AGE-ADJUSTED RATES, 2000-2004									
All ages	7.6	9.6	6.2	7.9	9.9	6.4	5.2	6.5	4.3
Under 65	2.2	2.8	1.7	2.3	2.9	1.7	2.4	3.1	1.8
65 and over	44.6	56.1	37.2	46.9	58.9	39.0	24.9	30.3	21.6
All ages(IARC world std) ^c	4.3	5.5	3.4	4.5	5.7	3.6	3.4	4.3	2.7
AGE-SPECIFIC RATES, 2000-2004									
<1	-	-	-	-	-	-	-	-	-
1-4	0.0	0.0	-	0.0	0.1	-	-	-	-
5-9	0.1	0.1	0.1	0.1	0.1	0.1	-	-	-
10-14	0.1	0.2	0.1	0.1	0.2	0.1	0.1	0.2	-
15-19	0.3	0.4	0.2	0.3	0.4	0.1	0.3	0.3	0.3
20-24	0.5	0.6	0.4	0.5	0.6	0.3	0.6	0.7	0.5
25-29	0.6	0.7	0.5	0.5	0.7	0.4	1.0	1.0	1.0
30-34	0.8	1.0	0.6	0.7	0.9	0.5	1.2	1.7	0.8
35-39	1.2	1.5	0.8	1.1	1.5	0.8	1.6	2.2	1.1
40-44	1.8	2.4	1.3	1.8	2.4	1.2	2.3	3.0	1.6
45-49	3.1	4.1	2.2	3.1	4.0	2.2	4.0	5.3	2.9
50-54	5.1	6.6	3.7	5.2	6.6	3.7	5.8	7.8	4.2
55-59	8.9	11.2	6.8	9.2	11.5	7.0	8.3	10.9	6.2
60-64	14.7	18.1	11.5	15.3	18.8	12.0	12.3	15.6	9.6
65-69	22.8	28.8	17.6	23.9	30.3	18.3	16.7	20.7	13.8
70-74	34.4	42.6	27.8	36.1	44.5	29.2	23.2	30.2	18.6
75-79	50.1	61.3	42.1	52.7	64.4	44.3	26.7	30.6	24.4
80-84	67.6	84.4	57.4	71.2	88.8	60.4	31.7	37.9	28.5
85+	78.0	102.1	67.7	82.2	107.8	71.2	35.1	43.0	32.0

^a SEER 17 areas. Rates are per 100,000 and are age-adjusted to the 2000 US Std Population (19 age groups - Census P25-1130), unless noted.

^b NCHS public use data file for the total US. Rates are per 100,000 and are age-adjusted to the 2000 US Std Population (19 age groups - Census P25-1130), unless noted.

^c Rates are per 100,000 and are age-adjusted to the IARC world standard population.

- Statistic not shown. Rate based on less than 16 cases for the time interval.

Table XIX-5
NON-HODGKIN LYMPHOMA

SURVIVAL RATES, BY RACE, SEX, DIAGNOSIS YEAR AND AGE

	<u>All Races</u>			<u>Whites</u>			<u>Blacks</u>		
	<u>Total</u>	<u>Males</u>	<u>Females</u>	<u>Total</u>	<u>Males</u>	<u>Females</u>	<u>Total</u>	<u>Males</u>	<u>Females</u>
<u>5-YR RELATIVE SURVIVAL RATES</u>									
YEAR OF DIAGNOSIS:									
1960-1963 ^a	-	-	-	31	31	31	-	-	-
1970-1973 ^a	-	-	-	41	39	43	-	-	-
1975-1977 ^b	47.9	46.8	49.0	48.3	47.7	48.9	48.8	42.0	56.1 ^f
1978-1980 ^b	49.9	47.9	51.9	50.0	48.2	51.7	52.3	48.0	58.1 ^f
1981-1983 ^b	52.5	52.2	52.9	52.8	52.5	53.1	50.4	49.5	51.5
1984-1986 ^b	53.3	51.4	55.3	53.7	52.0	55.6	47.5	44.9	51.0
1987-1989 ^b	52.4	48.7	56.8	52.8	49.2	57.2	47.5	42.6	53.5
1990-1992 ^b	51.9	47.3	57.8	52.9	48.2	58.7	42.1	38.1	47.7
1993-1995 ^b	53.6	49.3	59.3	54.4	50.3	59.7	42.0	35.3	54.8
1996-2003 ^b	63.8 ^e	61.7 ^e	66.4 ^e	64.8 ^e	62.8 ^e	67.1 ^e	56.0	52.1	61.1
<u>5-YR PERIOD SURVIVAL RATES^{cd}</u>									
YEAR OF DIAGNOSIS:									
1996-2003	65.0	62.7	67.8	65.7	63.6	68.1	56.7	52.3	62.2
<u>5-YR RELATIVE SURVIVAL RATES, 1996-2003^c</u>									
AGE AT DIAGNOSIS:									
<45	70.2	66.0	77.7	72.4	67.9	80.6	55.2	50.9	62.8
45-54	72.3	68.0	78.8	74.0	69.8	80.4	57.0	51.4	64.6
55-64	68.7	64.5	73.9	69.6	65.8	74.4	57.9	49.5	67.4
65-74	59.9	55.7	64.4	60.5	56.0	65.2	50.3	47.3	53.3
75+	47.9	46.4	48.9	48.3	46.8	49.3	42.5	45.8 ^f	40.2
Under 65	70.4	66.2	76.6	71.9	67.9	78.0	56.5	51.0	64.7
65 and over	54.4	51.8	56.5	54.8	52.1	57.1	47.4	46.9	47.5

^a Rates are based on End Results data from a series of hospital registries and one population-based registry.

^b Rates are from the SEER 9 areas (San Francisco, Connecticut, Detroit, Hawaii, Iowa, New Mexico, Seattle, Utah, Atlanta).

Rates are based on follow-up of patients into 2004.

^c Rates are from the SEER 17 areas (San Francisco, Connecticut, Detroit, Hawaii, Iowa, New Mexico, Seattle, Utah, Atlanta, San Jose-Monterey, Los Angeles, Alaska Native Registry, Rural Georgia, California excluding SF/SJM/LA, Kentucky, Louisiana and New Jersey). California excluding SF/SJM/LA, Kentucky, Louisiana, and New Jersey contribute cases for diagnosis years 2000-2003. The remaining 13 SEER Areas contribute cases for the entire period 1996-2003. Rates are based on follow-up of patients into 2004.

^d Period survival provides a more up-to-date estimate of survival by piecing together the most recent conditional survival estimates from several cohorts. It is computed here using three calendar year blocks (2001-2003: 0-1 year survival), (2000-2002: 1-2 year survival), (1999-2001: 2-3 year survival), (1998-2000: 3-4 year survival), (1997-1999: 4-5 years survival).

^e The difference in rates between 1975-1977 and 1996-2003 is statistically significant ($p < .05$).

^f The standard error of the survival rate is between 5 and 10 percentage points.

^g The standard error of the survival rate is greater than 10 percentage points.

- Statistic could not be calculated due to fewer than 16 cases during the time period.

Table XIX-6
NON-HODGKIN LYMPHOMA

SURVIVAL RATES^a

By Year of Diagnosis

All Races, Males and Females

Year of Diagnosis

	1975- 1979	1980- 1984	1985	1986	1987	1988	1989	1990	1991	1992	1993	1994	1995	1996	1997	1998	1999	2000	2001	2002	2003
Relative Survival Rates (SEER ^b)																					
1-year	71.3	74.1	73.0	71.1	73.3	72.0	71.3	70.8	70.4	71.5	72.0	71.4	70.8	73.8	76.4	77.2	77.9	77.5	79.1	81.3	80.6
2-year	61.1	64.8	64.4	62.8	64.3	63.1	63.2	61.8	61.6	63.0	64.1	63.8	62.5	66.4	68.8	70.5	71.5	71.9	73.7	76.2	
3-year	55.7	59.8	59.9	58.8	59.6	59.3	58.0	57.3	57.4	58.8	59.5	59.4	58.0	62.8	65.4	67.1	67.6	68.6	70.8		
4-year	51.9	56.1	56.3	55.0	56.4	55.2	54.6	53.4	54.8	55.6	56.7	56.1	55.4	59.6	62.8	64.7	65.5	66.6			
5-year	48.4	52.7	53.8	51.7	53.2	52.5	51.4	51.1	52.1	52.5	54.0	53.9	53.0	57.2	60.6	62.4	63.5				
6-year	45.4	49.7	51.6	49.1	50.4	50.4	48.9	48.9	49.3	50.2	52.0	52.1	50.9	55.6	58.5	60.0					
7-year	43.0	47.5	48.7	47.4	48.2	48.5	46.8	46.2	46.4	47.8	50.4	50.4	49.4	53.9	56.8						
8-year	41.0	45.6	46.8	45.3	45.9	46.5	44.1	44.3	44.2	46.4	48.5	48.8	48.0	52.2							
9-year	39.3	43.9	45.3	43.3	43.9	44.7	42.6	43.1	42.7	45.5	47.3	47.3	47.1								
10-year	38.1	42.3	43.8	41.7	42.8	43.5	40.8	42.2	41.7	44.1	46.1	45.8									
11-year	36.9	41.2	42.6	41.0	41.6	42.4	39.4	40.5	40.4	42.9	45.0										
12-year	36.0	40.1	41.5	39.6	40.3	41.0	37.9	39.3	39.7	42.0											
13-year	35.4	39.2	39.9	38.4	39.7	40.1	37.3	38.3	39.2												
14-year	34.4	38.4	38.8	37.9	38.8	39.7	36.5	37.6													
15-year	33.4	37.4	38.3	36.9	37.9	38.9	35.5														
16-year	32.6	36.6	37.4	36.1	37.7	38.4															
17-year	32.4	36.0	36.6	36.1	37.4																
18-year	32.2	35.6	36.0	36.0																	
19-year	31.7	35.1	35.2																		
20-year	31.2	34.6																			

^a Survival rates are relative rates expressed as percents.

^b Rates are from the SEER 9 areas (San Francisco, Connecticut, Detroit, Hawaii, Iowa, New Mexico, Seattle, Utah, and Atlanta).

Table XIX-7
NON-HODGKIN LYMPHOMA

SURVIVAL RATES^a

By Year of Diagnosis

All Races, Males

Year of Diagnosis

	1975- 1979	1980- 1984	1985	1986	1987	1988	1989	1990	1991	1992	1993	1994	1995	1996	1997	1998	1999	2000	2001	2002	2003
Relative Survival Rates (SEER ^b)																					
1-year	70.5	73.8	71.9	70.3	69.8	68.9	68.6	66.7	66.8	68.5	68.8	68.2	67.2	71.7	75.6	75.4	76.5	76.6	78.2	81.0	80.0
2-year	60.3	64.9	63.1	61.8	61.0	60.3	59.3	57.8	57.4	58.4	59.9	60.3	58.8	63.8	67.3	68.7	69.7	70.7	71.7	75.4	
3-year	54.5	59.5	58.3	57.8	56.4	55.7	54.2	52.8	52.9	54.6	55.2	55.4	54.5	60.2	64.1	65.3	64.8	67.3	68.7		
4-year	50.6	55.5	53.8	53.3	52.9	51.6	50.5	49.0	50.3	50.9	52.0	52.1	51.7	56.7	61.3	63.0	62.4	64.7			
5-year	46.9	52.0	50.7	50.0	50.0	48.9	47.2	46.8	48.2	46.9	49.2	49.7	49.0	54.3	59.0	60.5	60.3				
6-year	44.2	48.8	48.1	46.8	47.2	47.0	44.6	45.2	45.3	45.1	47.2	48.2	47.1	51.9	57.1	58.0					
7-year	41.9	46.5	45.2	45.0	45.8	45.5	41.8	42.5	42.5	42.8	46.5	46.7	45.6	50.1	55.4						
8-year	40.1	44.7	43.3	42.6	43.3	44.2	39.4	40.9	40.2	41.5	44.7	44.8	43.9	48.5							
9-year	38.2	43.1	41.5	40.8	40.9	42.7	38.1	39.5	38.6	40.5	43.6	43.0	43.2								
10-year	36.9	41.3	40.5	39.3	39.8	41.5	36.6	38.8	37.7	38.9	42.9	41.9									
11-year	35.9	40.0	39.2	38.1	38.7	40.4	35.1	37.6	36.7	38.4	41.5										
12-year	35.2	39.2	37.7	37.1	37.5	39.3	33.6	36.2	36.2	37.7											
13-year	34.2	38.5	36.2	36.1	37.3	38.6	33.2	35.1	35.7												
14-year	33.1	37.8	35.5	35.0	36.3	38.5	32.2	34.4													
15-year	31.9	36.9	35.3	33.8	35.6	37.7	31.3														
16-year	31.2	35.9	34.8	33.5	35.1	36.8															
17-year	30.9	35.4	33.7	33.5	34.3																
18-year	30.8	35.1	33.3	33.5																	
19-year	30.6	34.9	32.7																		
20-year	30.4	34.2																			

^a Survival rates are relative rates expressed as percents.

^b Rates are from the SEER 9 areas (San Francisco, Connecticut, Detroit, Hawaii, Iowa, New Mexico, Seattle, Utah, and Atlanta).

Table XIX-8
NON-HODGKIN LYMPHOMA

SURVIVAL RATES^a

By Year of Diagnosis

All Races, Females

Year of Diagnosis

	1975- 1979	1980- 1984	1985	1986	1987	1988	1989	1990	1991	1992	1993	1994	1995	1996	1997	1998	1999	2000	2001	2002	2003
Relative Survival Rates (SEER ^b)																					
1-year	72.1	74.5	74.3	72.2	77.5	75.7	74.8	76.0	75.2	75.4	76.0	75.6	75.6	76.5	77.4	79.2	79.6	78.6	80.2	81.6	81.3
2-year	61.9	64.8	65.7	63.9	68.3	66.4	67.9	66.8	67.2	68.7	69.4	68.2	67.3	69.5	70.6	72.5	73.7	73.3	76.0	77.0	
3-year	56.9	60.1	61.8	60.0	63.4	63.6	62.8	62.9	63.2	64.1	65.0	64.5	62.7	66.2	67.0	69.1	70.9	70.2	73.3		
4-year	53.2	56.8	59.2	57.1	60.7	59.6	59.8	58.9	60.8	61.6	62.5	61.3	60.4	63.3	64.6	66.6	69.3	68.9			
5-year	50.0	53.4	57.2	53.7	57.2	56.7	56.6	56.4	57.4	59.5	60.2	59.4	58.5	60.9	62.6	64.6	67.3				
6-year	46.6	50.6	55.4	51.7	54.2	54.3	54.2	53.4	54.7	56.5	58.0	57.3	56.2	60.3	60.3	62.2					
7-year	44.1	48.5	52.6	50.2	51.1	52.2	53.0	50.9	51.7	54.2	55.3	55.2	54.6	58.8	58.6						
8-year	41.9	46.6	50.7	48.4	49.1	49.2	50.0	48.6	49.8	52.7	53.5	54.1	53.4	57.1							
9-year	40.4	44.8	49.4	46.3	47.4	47.2	48.2	47.5	48.5	52.0	52.1	53.0	52.5								
10-year	39.4	43.4	47.5	44.7	46.5	45.9	46.2	46.5	47.1	50.8	50.4	51.2									
11-year	37.8	42.5	46.3	44.6	45.2	44.7	44.8	44.4	45.7	48.6	49.7										
12-year	36.8	41.1	45.6	42.6	43.7	43.0	43.5	43.3	44.6	47.7											
13-year	36.5	39.9	44.2	41.4	42.6	41.8	42.7	42.4	44.2												
14-year	35.7	39.0	42.6	41.0	41.7	41.2	42.1	41.7													
15-year	34.8	37.8	41.6	40.9	40.7	40.4	41.0														
16-year	34.1	37.3	40.2	39.6	40.7	40.1															
17-year	33.8	36.7	39.8	39.5	40.7																
18-year	33.6	36.1	39.1	38.9																	
19-year	32.9	35.4	38.1																		
20-year	32.1	34.9																			

^a Survival rates are relative rates expressed as percents.

^b Rates are from the SEER 9 areas (San Francisco, Connecticut, Detroit, Hawaii, Iowa, New Mexico, Seattle, Utah, and Atlanta).

Table XIX-9

NON-HODGKIN LYMPHOMANUMBER OF CASES

By SEER Location and Year of Diagnosis, 1975-2004

All Races, Males, All Ages

SEER Location	Year of Diagnosis												
	1975- 1979	1980- 1981	1982- 1983	1984- 1985	1986- 1987	1988- 1989	1990- 1991	1992- 1993	1994- 1995	1996- 1997	1998- 1999	2000- 2001	2002- 2004
SEER 9 ^b	5221	2504	2702	3172	3625	3987	4572	4728	5310	5237	5222	5508	8649
SEER 9 except SF-Oakland	4280	2086	2265	2597	2817	3085	3507	3692	4147	4227	4331	4468	7212
San Francisco- Oakland SMSA ^c	941	418	437	575	808	902	1065	1036	1163	1010	891	1040	1437
San Francisco City/County	245	96	123	210	326	393	468	410	449	353	213	255	371

AGE-ADJUSTED CANCER INCIDENCE RATES^a

By SEER Location and Year of Diagnosis, 1975-2004

All Races, Males, All Ages

SEER Location	Year of Diagnosis												
	1975- 1979	1980- 1981	1982- 1983	1984- 1985	1986- 1987	1988- 1989	1990- 1991	1992- 1993	1994- 1995	1996- 1997	1998- 1999	2000- 2001	2002- 2004
SEER 9 ^b	13.4	15.5	16.1	18.3	20.1	21.5	23.4	23.2	25.1	24.3	23.6	24.1	24.2
SEER 9 except SF-Oakland	13.2	15.4	16.1	18.1	18.8	20.0	21.7	21.8	23.5	23.4	23.3	23.3	24.0
San Francisco- Oakland SMSA ^c	14.8	15.8	16.0	19.5	26.7	28.5	31.7	30.5	33.4	28.7	24.9	28.3	25.1
San Francisco City/County	14.3	14.4	17.6	29.3	44.5	51.9	61.1	52.3	57.3	44.7	27.4	32.3	30.4

^a Rates are per 100,000 males and are age-adjusted to the 2000 US Std Population (19 age groups - Census P25-1130).^b The SEER 9 areas are San Francisco-Oakland SMSA, Connecticut, Detroit, Hawaii, Iowa, New Mexico, Seattle, Utah and Atlanta.^c The San Francisco-Oakland SMSA represents 15% of all persons in the SEER areas. For this age group, all SEER areas may not be generalizable to the United States for Non-Hodgkin Lymphoma.

- Statistic not shown. Rate based on less than 4 cases for the time interval.

Table XIX-10

NON-HODGKIN LYMPHOMANUMBER OF CASES

By SEER Location and Year of Diagnosis, 1975-2004

All Races, Males, Ages 0-19

SEER Location	Year of Diagnosis												
	1975- 1979	1980- 1981	1982- 1983	1984- 1985	1986- 1987	1988- 1989	1990- 1991	1992- 1993	1994- 1995	1996- 1997	1998- 1999	2000- 2001	2002- 2004
SEER 9 ^b	220	88	108	89	94	85	100	88	118	105	105	121	174
SEER 9 except SF-Oakland	188	79	95	80	80	77	86	73	105	84	93	100	155
San Francisco- Oakland SMSA ^c	32	9	13	9	14	8	14	15	13	21	12	21	19
San Francisco City/County	9	<4	<4	<4	<4	0	<4	<4	<4	<4	<4	0	<4

AGE-ADJUSTED CANCER INCIDENCE RATES^a

By SEER Location and Year of Diagnosis, 1975-2004

All Races, Males, Ages 0-19

SEER Location	Year of Diagnosis												
	1975- 1979	1980- 1981	1982- 1983	1984- 1985	1986- 1987	1988- 1989	1990- 1991	1992- 1993	1994- 1995	1996- 1997	1998- 1999	2000- 2001	2002- 2004
SEER 9 ^b	1.2	1.3	1.6	1.3	1.4	1.3	1.5	1.3	1.6	1.4	1.4	1.6	1.5
SEER 9 except SF-Oakland	1.2	1.3	1.6	1.4	1.4	1.3	1.5	1.2	1.7	1.3	1.4	1.5	1.5
San Francisco- Oakland SMSA ^c	1.4	1.0	1.5	1.0	1.6	0.9	1.5	1.6	1.3	2.1	1.2	2.0	1.2
San Francisco City/County	2.3	-	-	-	-	0.0	-	-	-	-	-	0.0	-

^a Rates are per 100,000 males aged 0-19 and are age-adjusted to the 2000 US Std Population (19 age groups - Census P25-1130).^b The SEER 9 areas are San Francisco-Oakland SMSA, Connecticut, Detroit, Hawaii, Iowa, New Mexico, Seattle, Utah and Atlanta.^c The San Francisco-Oakland SMSA represents 15% of all persons in the SEER areas. For this age group, all SEER areas may not be generalizable to the United States for Non-Hodgkin Lymphoma.

- Statistic not shown. Rate based on less than 4 cases for the time interval.

Table XIX-11

NON-HODGKIN LYMPHOMANUMBER OF CASES

By SEER Location and Year of Diagnosis, 1975-2004

All Races, Males, Ages 20-54

SEER Location	Year of Diagnosis												
	1975- 1979	1980- 1981	1982- 1983	1984- 1985	1986- 1987	1988- 1989	1990- 1991	1992- 1993	1994- 1995	1996- 1997	1998- 1999	2000- 2001	2002- 2004
SEER 9 ^b	1464	686	722	955	1209	1408	1766	1831	2079	1752	1603	1670	2420
SEER 9 except SF-Oakland	1206	561	587	727	825	918	1193	1293	1475	1308	1265	1304	1965
San Francisco- Oakland SMSA ^c	258	125	135	228	384	490	573	538	604	444	338	366	455
San Francisco City/County	58	29	34	105	215	288	334	303	316	224	105	114	167

AGE-ADJUSTED CANCER INCIDENCE RATES^a

By SEER Location and Year of Diagnosis, 1975-2004

All Races, Males, Ages 20-54

SEER Location	Year of Diagnosis												
	1975- 1979	1980- 1981	1982- 1983	1984- 1985	1986- 1987	1988- 1989	1990- 1991	1992- 1993	1994- 1995	1996- 1997	1998- 1999	2000- 2001	2002- 2004
SEER 9 ^b	6.9	7.9	8.2	10.4	12.4	13.5	15.9	15.6	16.8	13.7	12.1	12.1	11.4
SEER 9 except SF-Oakland	6.9	7.8	8.1	9.7	10.2	10.8	13.1	13.4	14.3	12.2	11.4	11.3	11.1
San Francisco- Oakland SMSA ^c	7.0	8.5	8.9	13.9	22.6	26.4	29.6	26.8	29.6	21.2	15.5	16.2	13.4
San Francisco City/County	6.7	8.8	9.4	27.2	56.6	71.5	81.5	72.3	74.2	50.8	23.0	24.8	23.9

- ^a Rates are per 100,000 males aged 20-54 and are age-adjusted to the 2000 US Std Population (19 age groups - Census P25-1130).
^b The SEER 9 areas are San Francisco-Oakland SMSA, Connecticut, Detroit, Hawaii, Iowa, New Mexico, Seattle, Utah and Atlanta.
^c The San Francisco-Oakland SMSA represents 15% of all persons in the SEER areas. For this age group, all SEER areas may not be generalizable to the United States for Non-Hodgkin Lymphoma.
- Statistic not shown. Rate based on less than 4 cases for the time interval.

Table XIX-12

NON-HODGKIN LYMPHOMANUMBER OF CASES

By SEER Location and Year of Diagnosis, 1975-2004

All Races, Males, Ages 55+

SEER Location	Year of Diagnosis												
	1975- 1979	1980- 1981	1982- 1983	1984- 1985	1986- 1987	1988- 1989	1990- 1991	1992- 1993	1994- 1995	1996- 1997	1998- 1999	2000- 2001	2002- 2004
SEER 9 ^b	3537	1730	1872	2128	2322	2494	2706	2809	3113	3380	3514	3717	6055
SEER 9 except SF-Oakland	2886	1446	1583	1790	1912	2090	2228	2326	2567	2835	2973	3064	5092
San Francisco- Oakland SMSA ^c	651	284	289	338	410	404	478	483	546	545	541	653	963
San Francisco City/County	178	65	88	104	109	105	132	106	130	126	106	141	202

AGE-ADJUSTED CANCER INCIDENCE RATES^a

By SEER Location and Year of Diagnosis, 1975-2004

All Races, Males, Ages 55+

SEER Location	Year of Diagnosis												
	1975- 1979	1980- 1981	1982- 1983	1984- 1985	1986- 1987	1988- 1989	1990- 1991	1992- 1993	1994- 1995	1996- 1997	1998- 1999	2000- 2001	2002- 2004
SEER 9 ^b	45.2	52.2	54.0	59.6	63.3	67.2	70.1	70.6	76.0	79.9	80.3	82.3	84.5
SEER 9 except SF-Oakland	44.0	52.0	54.4	60.0	62.0	66.7	68.8	69.2	74.3	79.5	80.6	80.5	84.4
San Francisco- Oakland SMSA ^c	51.0	52.7	52.0	57.5	70.1	70.1	77.3	78.1	85.2	82.1	78.9	91.8	84.7
San Francisco City/County	48.2	44.6	59.8	72.7	73.9	75.7	93.3	74.7	91.4	87.2	72.7	93.0	84.8

^a Rates are per 100,000 males aged 55+ and are age-adjusted to the 2000 US Std Population (19 age groups - Census P25-1130).^b The SEER 9 areas are San Francisco-Oakland SMSA, Connecticut, Detroit, Hawaii, Iowa, New Mexico, Seattle, Utah and Atlanta.^c The San Francisco-Oakland SMSA represents 15% of all persons in the SEER areas. For this age group, all SEER areas may not be generalizable to the United States for Non-Hodgkin Lymphoma.

- Statistic not shown. Rate based on less than 4 cases for the time interval.

Table XIX-13
NON-HODGKIN LYMPHOMA

Risk of Being Diagnosed With Cancer in 10, 20 and 30 Years, Lifetime Risk of Being Diagnosed with Cancer, and
Lifetime Risk of Dying from Cancer Given Cancer Free At Current Age
Both Sexes, 2002-2004 By Race/Ethnicity

Race/ Ethnicity	Current Age	Risk of Being Diagnosed with Cancer						Risk of Dying from Cancer	
		+10 yrs Percent (95% C.I.)	+20 yrs Percent (95% C.I.)	+30 yrs Percent (95% C.I.)	Eventually Percent (95% C.I.)	Eventually Percent (95% C.I.)			
All Races	0	0.01 (0.01, 0.01)	0.02 (0.02, 0.02)	0.05 (0.05, 0.05)	2.02 (2.00, 2.04)	0.83 (0.83, 0.84)			
	10	0.01 (0.01, 0.02)	0.04 (0.04, 0.05)	0.10 (0.10, 0.11)	2.04 (2.02, 2.06)	0.84 (0.84, 0.85)			
	20	0.03 (0.03, 0.03)	0.09 (0.09, 0.09)	0.21 (0.21, 0.22)	2.03 (2.01, 2.05)	0.85 (0.84, 0.85)			
	30	0.06 (0.06, 0.06)	0.19 (0.18, 0.19)	0.44 (0.43, 0.45)	2.02 (2.00, 2.04)	0.85 (0.84, 0.86)			
	40	0.13 (0.12, 0.13)	0.38 (0.38, 0.39)	0.85 (0.84, 0.86)	1.99 (1.97, 2.01)	0.85 (0.84, 0.86)			
	50	0.27 (0.26, 0.27)	0.74 (0.73, 0.76)	1.38 (1.36, 1.39)	1.92 (1.90, 1.94)	0.85 (0.85, 0.86)			
	60	0.51 (0.50, 0.52)	1.18 (1.17, 1.20)	1.66 (1.64, 1.68)	1.76 (1.74, 1.78)	0.84 (0.83, 0.85)			
	70	0.78 (0.77, 0.79)	1.33 (1.31, 1.35)	- (- , -)	1.45 (1.43, 1.47)	0.78 (0.77, 0.79)			
80	0.78 (0.77, 0.80)	- (- , -)	- (- , -)	0.95 (0.93, 0.98)	0.62 (0.62, 0.63)				
White	0	0.01 (0.01, 0.01)	0.02 (0.02, 0.02)	0.05 (0.05, 0.05)	2.12 (2.10, 2.15)	0.88 (0.88, 0.89)			
	10	0.02 (0.01, 0.02)	0.04 (0.04, 0.05)	0.10 (0.10, 0.11)	2.14 (2.12, 2.16)	0.89 (0.89, 0.90)			
	20	0.03 (0.03, 0.03)	0.09 (0.08, 0.09)	0.21 (0.21, 0.22)	2.13 (2.11, 2.16)	0.90 (0.89, 0.90)			
	30	0.06 (0.06, 0.06)	0.19 (0.18, 0.19)	0.45 (0.44, 0.46)	2.12 (2.10, 2.15)	0.90 (0.89, 0.91)			
	40	0.13 (0.13, 0.13)	0.40 (0.39, 0.40)	0.89 (0.88, 0.91)	2.09 (2.07, 2.11)	0.90 (0.89, 0.91)			
	50	0.27 (0.27, 0.28)	0.78 (0.77, 0.80)	1.45 (1.44, 1.47)	2.02 (1.99, 2.04)	0.90 (0.89, 0.91)			
	60	0.54 (0.53, 0.55)	1.25 (1.24, 1.27)	1.75 (1.72, 1.77)	1.85 (1.83, 1.87)	0.89 (0.88, 0.90)			
	70	0.82 (0.81, 0.84)	1.39 (1.37, 1.41)	- (- , -)	1.51 (1.49, 1.53)	0.82 (0.81, 0.83)			
80	0.82 (0.80, 0.83)	- (- , -)	- (- , -)	0.99 (0.97, 1.01)	0.65 (0.64, 0.66)				
Black	0	0.01 (0.00, 0.01)	0.02 (0.02, 0.02)	0.06 (0.05, 0.06)	1.21 (1.16, 1.26)	0.45 (0.44, 0.47)			
	10	0.01 (0.01, 0.02)	0.05 (0.04, 0.06)	0.13 (0.12, 0.14)	1.23 (1.18, 1.28)	0.46 (0.45, 0.48)			
	20	0.04 (0.03, 0.04)	0.11 (0.10, 0.12)	0.25 (0.24, 0.27)	1.22 (1.18, 1.27)	0.46 (0.45, 0.48)			
	30	0.08 (0.07, 0.09)	0.22 (0.20, 0.23)	0.44 (0.42, 0.46)	1.21 (1.16, 1.26)	0.46 (0.45, 0.48)			
	40	0.14 (0.13, 0.15)	0.37 (0.35, 0.39)	0.66 (0.63, 0.69)	1.16 (1.11, 1.21)	0.46 (0.44, 0.47)			
	50	0.24 (0.22, 0.26)	0.55 (0.52, 0.58)	0.87 (0.83, 0.92)	1.07 (1.02, 1.12)	0.45 (0.44, 0.47)			
	60	0.35 (0.32, 0.37)	0.71 (0.67, 0.75)	0.89 (0.84, 0.94)	0.93 (0.88, 0.99)	0.43 (0.42, 0.45)			
	70	0.46 (0.42, 0.50)	0.68 (0.63, 0.73)	- (- , -)	0.73 (0.68, 0.79)	0.38 (0.36, 0.40)			
80	0.36 (0.31, 0.40)	- (- , -)	- (- , -)	0.45 (0.39, 0.51)	0.28 (0.26, 0.30)				

Devcan Version 6.2.0, April 2006, National Cancer Institute (<http://srab.cancer.gov/devcan/>).

Source: Incidence data are from the SEER 17 areas (San Francisco, Connecticut, Detroit, Hawaii, Iowa, New Mexico, Seattle, Utah, Atlanta, San Jose-Monterey, Los Angeles, Alaska Native Registry, Rural Georgia, California excluding SF/SJM/LA, Kentucky, Louisiana and New Jersey). Mortality data are from the NCHS public use data file for the total US.

- Statistic could not be calculated.

A percent or confidence interval value of 0.00 represents a value that is below 0.005.

Table XIX-13 - continued

NON-HODGKIN LYMPHOMA

Risk of Being Diagnosed With Cancer in 10, 20 and 30 Years, Lifetime Risk of Being Diagnosed with Cancer, and
Lifetime Risk of Dying from Cancer Given Cancer Free At Current Age
Both Sexes, 2002-2004 By Race/Ethnicity

Race/ Ethnicity	Current Age	Risk of Being Diagnosed with Cancer				Risk of Dying from Cancer	
		+10 yrs Percent (95% C.I.)	+20 yrs Percent (95% C.I.)	+30 yrs Percent (95% C.I.)	Eventually Percent (95% C.I.)	Eventually Percent (95% C.I.)	
Asian/ Pacific Islander	0	0.00 (0.00, 0.01)	0.02 (0.01, 0.02)	0.04 (0.04, 0.05)	1.73 (1.64, 1.83)	0.79 (0.72, 0.86)	
	10	0.01 (0.01, 0.02)	0.04 (0.03, 0.05)	0.08 (0.07, 0.09)	1.74 (1.65, 1.85)	0.79 (0.73, 0.87)	
	20	0.02 (0.02, 0.03)	0.06 (0.06, 0.07)	0.14 (0.13, 0.15)	1.73 (1.64, 1.84)	0.79 (0.73, 0.87)	
	30	0.04 (0.03, 0.04)	0.11 (0.10, 0.12)	0.28 (0.27, 0.30)	1.72 (1.63, 1.82)	0.79 (0.73, 0.87)	
	40	0.08 (0.07, 0.08)	0.25 (0.23, 0.27)	0.55 (0.52, 0.58)	1.69 (1.60, 1.79)	0.79 (0.72, 0.86)	
	50	0.17 (0.16, 0.19)	0.48 (0.45, 0.51)	0.97 (0.92, 1.03)	1.64 (1.54, 1.74)	0.79 (0.72, 0.86)	
	60	0.32 (0.29, 0.35)	0.83 (0.78, 0.88)	1.31 (1.24, 1.38)	1.52 (1.42, 1.62)	0.77 (0.70, 0.85)	
	70	0.55 (0.51, 0.60)	1.07 (1.01, 1.15)	- (- , -)	1.30 (1.20, 1.41)	0.73 (0.66, 0.81)	
80	0.65 (0.59, 0.72)	- (- , -)	- (- , -)	0.93 (0.83, 1.06)	0.59 (0.51, 0.69)		
American Indian/ Alaska Native ^a	0	0.00 (0.00, 0.02)	0.01 (0.00, 0.03)	0.01 (0.00, 0.04)	0.91 (0.71, 1.26)	0.52 (0.41, 0.66)	
	10	0.01 (0.00, 0.02)	0.01 (0.00, 0.03)	0.04 (0.02, 0.07)	0.92 (0.72, 1.28)	0.53 (0.42, 0.67)	
	20	0.00 (0.00, 0.02)	0.03 (0.02, 0.06)	0.10 (0.07, 0.14)	0.92 (0.72, 1.29)	0.53 (0.42, 0.68)	
	30	0.03 (0.01, 0.06)	0.10 (0.07, 0.14)	0.26 (0.19, 0.33)	0.94 (0.73, 1.30)	0.54 (0.43, 0.69)	
	40	0.07 (0.05, 0.11)	0.23 (0.17, 0.31)	0.45 (0.35, 0.57)	0.93 (0.72, 1.31)	0.54 (0.43, 0.70)	
	50	0.17 (0.12, 0.23)	0.39 (0.29, 0.51)	0.61 (0.47, 0.78)	0.89 (0.68, 1.29)	0.55 (0.43, 0.71)	
	60	0.24 (0.16, 0.35)	0.47 (0.34, 0.65)	0.71 (0.52, 0.96)	0.78 (0.56, 1.20)	0.54 (0.41, 0.72)	
	70	0.27 (0.17, 0.43)	0.55 (0.36, 0.81)	- (- , -)	0.63 (0.41, 1.10)	0.50 (0.36, 0.71)	
80	0.38 (0.20, 0.69)	- (- , -)	- (- , -)	0.51 (0.26, 1.14)	0.39 (0.22, 0.68)		
Hispanic ^b	0	0.01 (0.01, 0.01)	0.02 (0.02, 0.02)	0.04 (0.04, 0.05)	1.94 (1.86, 2.03)	0.74 (0.71, 0.78)	
	10	0.01 (0.01, 0.01)	0.04 (0.03, 0.04)	0.09 (0.08, 0.09)	1.95 (1.87, 2.04)	0.75 (0.71, 0.78)	
	20	0.02 (0.02, 0.03)	0.07 (0.07, 0.08)	0.18 (0.17, 0.19)	1.95 (1.87, 2.04)	0.75 (0.72, 0.79)	
	30	0.05 (0.05, 0.06)	0.16 (0.15, 0.17)	0.38 (0.36, 0.40)	1.94 (1.86, 2.03)	0.75 (0.72, 0.79)	
	40	0.11 (0.10, 0.12)	0.33 (0.32, 0.35)	0.70 (0.67, 0.73)	1.91 (1.83, 2.00)	0.75 (0.72, 0.79)	
	50	0.23 (0.21, 0.24)	0.60 (0.57, 0.63)	1.20 (1.15, 1.26)	1.84 (1.76, 1.94)	0.74 (0.71, 0.78)	
	60	0.39 (0.37, 0.42)	1.03 (0.98, 1.08)	1.52 (1.45, 1.59)	1.70 (1.61, 1.79)	0.73 (0.69, 0.76)	
	70	0.71 (0.67, 0.76)	1.26 (1.19, 1.33)	- (- , -)	1.46 (1.37, 1.56)	0.67 (0.63, 0.71)	
80	0.73 (0.66, 0.80)	- (- , -)	- (- , -)	1.00 (0.90, 1.11)	0.52 (0.48, 0.57)		

Devcan Version 6.2.0, April 2006, National Cancer Institute (<http://srab.cancer.gov/devcan/>).

Source: Incidence data are from the SEER 17 areas (San Francisco, Connecticut, Detroit, Hawaii, Iowa, New Mexico, Seattle, Utah, Atlanta, San Jose-Monterey, Los Angeles, Alaska Native Registry, Rural Georgia, California excluding SF/SJM/LA, Kentucky, Louisiana and New Jersey). Mortality data are from the NCHS public use data file for the total US.

^a Underlying incidence and mortality data for American Indian/Alaska Native are based on the CHSDA (Contract Health Service Delivery Area) counties.

^b Hispanic is not mutually exclusive from whites, blacks, Asian/Pacific Islanders, and American Indians/Alaska Natives. Underlying incidence data for Hispanics are based on NHIA and exclude cases from the Alaska Native Registry and Kentucky. Underlying mortality data for Hispanics exclude deaths from Minnesota, New Hampshire and North Dakota.

- Statistic could not be calculated.

A percent or confidence interval value of 0.00 represents a value that is below 0.005.

Table XIX-13 - continued

NON-HODGKIN LYMPHOMA

Risk of Being Diagnosed With Cancer in 10, 20 and 30 Years, Lifetime Risk of Being Diagnosed with Cancer, and
Lifetime Risk of Dying from Cancer Given Cancer Free At Current Age
Males, 2002-2004 By Race/Ethnicity

Race/ Ethnicity	Current Age	Risk of Being Diagnosed with Cancer			Risk of Dying from Cancer	
		+10 yrs Percent (95% C.I.)	+20 yrs Percent (95% C.I.)	+30 yrs Percent (95% C.I.)	Eventually Percent (95% C.I.)	Eventually Percent (95% C.I.)
All Races	0	0.01 (0.01, 0.01)	0.03 (0.03, 0.03)	0.06 (0.06, 0.06)	2.19 (2.16, 2.22)	0.91 (0.90, 0.92)
	10	0.02 (0.02, 0.02)	0.05 (0.05, 0.06)	0.12 (0.12, 0.13)	2.21 (2.18, 2.24)	0.92 (0.91, 0.93)
	20	0.03 (0.03, 0.04)	0.11 (0.10, 0.11)	0.26 (0.25, 0.26)	2.20 (2.17, 2.23)	0.93 (0.92, 0.94)
	30	0.07 (0.07, 0.08)	0.22 (0.22, 0.23)	0.51 (0.50, 0.53)	2.20 (2.17, 2.23)	0.93 (0.92, 0.94)
	40	0.15 (0.15, 0.16)	0.45 (0.44, 0.46)	0.96 (0.94, 0.98)	2.16 (2.13, 2.19)	0.94 (0.93, 0.95)
	50	0.31 (0.30, 0.32)	0.84 (0.82, 0.85)	1.53 (1.50, 1.55)	2.08 (2.05, 2.12)	0.94 (0.93, 0.95)
	60	0.57 (0.56, 0.59)	1.32 (1.30, 1.35)	1.82 (1.79, 1.85)	1.92 (1.89, 1.96)	0.93 (0.92, 0.95)
	70	0.89 (0.87, 0.91)	1.49 (1.46, 1.52)	- (- , -)	1.61 (1.58, 1.65)	0.87 (0.86, 0.88)
80	0.93 (0.90, 0.96)	- (- , -)	- (- , -)	1.11 (1.08, 1.15)	0.72 (0.70, 0.73)	
White	0	0.01 (0.01, 0.01)	0.03 (0.03, 0.03)	0.06 (0.06, 0.07)	2.30 (2.26, 2.33)	0.97 (0.96, 0.98)
	10	0.02 (0.02, 0.02)	0.05 (0.05, 0.06)	0.12 (0.12, 0.13)	2.31 (2.28, 2.35)	0.98 (0.97, 0.99)
	20	0.03 (0.03, 0.04)	0.10 (0.10, 0.11)	0.26 (0.25, 0.27)	2.31 (2.27, 2.34)	0.98 (0.97, 0.99)
	30	0.07 (0.07, 0.08)	0.23 (0.22, 0.23)	0.53 (0.51, 0.54)	2.30 (2.27, 2.34)	0.99 (0.98, 1.00)
	40	0.16 (0.15, 0.16)	0.46 (0.45, 0.47)	1.01 (0.99, 1.03)	2.27 (2.23, 2.30)	0.99 (0.98, 1.01)
	50	0.32 (0.31, 0.33)	0.88 (0.86, 0.90)	1.61 (1.58, 1.64)	2.19 (2.15, 2.22)	1.00 (0.99, 1.01)
	60	0.61 (0.59, 0.63)	1.39 (1.37, 1.42)	1.92 (1.88, 1.95)	2.02 (1.98, 2.05)	0.99 (0.98, 1.00)
	70	0.94 (0.91, 0.96)	1.56 (1.52, 1.59)	- (- , -)	1.68 (1.64, 1.71)	0.92 (0.90, 0.93)
80	0.96 (0.93, 1.00)	- (- , -)	- (- , -)	1.15 (1.11, 1.19)	0.75 (0.74, 0.77)	
Black	0	0.01 (0.00, 0.01)	0.03 (0.02, 0.03)	0.07 (0.06, 0.08)	1.31 (1.24, 1.39)	0.47 (0.45, 0.49)
	10	0.02 (0.01, 0.02)	0.06 (0.05, 0.08)	0.16 (0.14, 0.17)	1.34 (1.27, 1.42)	0.48 (0.46, 0.50)
	20	0.05 (0.04, 0.06)	0.14 (0.12, 0.15)	0.31 (0.29, 0.33)	1.33 (1.26, 1.41)	0.48 (0.46, 0.51)
	30	0.09 (0.08, 0.11)	0.27 (0.25, 0.29)	0.54 (0.51, 0.58)	1.32 (1.25, 1.40)	0.49 (0.46, 0.51)
	40	0.18 (0.17, 0.20)	0.46 (0.43, 0.50)	0.79 (0.74, 0.84)	1.27 (1.19, 1.35)	0.48 (0.46, 0.51)
	50	0.30 (0.27, 0.33)	0.64 (0.60, 0.69)	0.99 (0.92, 1.05)	1.16 (1.08, 1.24)	0.47 (0.45, 0.50)
	60	0.40 (0.36, 0.44)	0.80 (0.73, 0.86)	0.97 (0.89, 1.05)	1.00 (0.92, 1.08)	0.45 (0.43, 0.48)
	70	0.53 (0.47, 0.59)	0.76 (0.68, 0.84)	- (- , -)	0.79 (0.71, 0.89)	0.40 (0.37, 0.43)
80	0.42 (0.34, 0.51)	- (- , -)	- (- , -)	0.49 (0.40, 0.60)	0.30 (0.27, 0.34)	

Devcan Version 6.2.0, April 2006, National Cancer Institute (<http://srab.cancer.gov/devcan/>).

Source: Incidence data are from the SEER 17 areas (San Francisco, Connecticut, Detroit, Hawaii, Iowa, New Mexico, Seattle, Utah, Atlanta, San Jose-Monterey, Los Angeles, Alaska Native Registry, Rural Georgia, California excluding SF/SJM/LA, Kentucky, Louisiana and New Jersey). Mortality data are from the NCHS public use data file for the total US.

- Statistic could not be calculated.

A percent or confidence interval value of 0.00 represents a value that is below 0.005.

Table XIX-13 - continued

NON-HODGKIN LYMPHOMA

Risk of Being Diagnosed With Cancer in 10, 20 and 30 Years, Lifetime Risk of Being Diagnosed with Cancer, and
Lifetime Risk of Dying from Cancer Given Cancer Free At Current Age
Males, 2002-2004 By Race/Ethnicity

Race/ Ethnicity	Current Age	Risk of Being Diagnosed with Cancer				Risk of Dying from Cancer	
		+10 yrs Percent (95% C.I.)	+20 yrs Percent (95% C.I.)	+30 yrs Percent (95% C.I.)	Eventually Percent (95% C.I.)	Eventually Percent (95% C.I.)	
Asian/ Pacific Islander	0	0.01 (0.00, 0.01)	0.02 (0.02, 0.03)	0.05 (0.04, 0.06)	1.92 (1.79, 2.08)	0.86 (0.77, 0.97)	
	10	0.02 (0.01, 0.02)	0.05 (0.04, 0.06)	0.09 (0.08, 0.11)	1.94 (1.80, 2.09)	0.86 (0.77, 0.97)	
	20	0.03 (0.02, 0.04)	0.07 (0.06, 0.09)	0.16 (0.14, 0.18)	1.93 (1.79, 2.08)	0.86 (0.77, 0.97)	
	30	0.05 (0.04, 0.05)	0.13 (0.11, 0.15)	0.31 (0.28, 0.34)	1.91 (1.77, 2.07)	0.86 (0.77, 0.97)	
	40	0.09 (0.07, 0.10)	0.27 (0.24, 0.30)	0.60 (0.55, 0.65)	1.88 (1.74, 2.04)	0.86 (0.77, 0.97)	
	50	0.18 (0.16, 0.21)	0.52 (0.48, 0.57)	1.10 (1.02, 1.18)	1.83 (1.69, 1.99)	0.86 (0.76, 0.97)	
	60	0.35 (0.31, 0.40)	0.95 (0.88, 1.04)	1.49 (1.38, 1.61)	1.72 (1.57, 1.88)	0.84 (0.74, 0.96)	
	70	0.67 (0.60, 0.74)	1.27 (1.16, 1.39)	- (- , -)	1.52 (1.37, 1.69)	0.80 (0.69, 0.92)	
	80	0.79 (0.69, 0.91)	- (- , -)	- (- , -)	1.12 (0.96, 1.33)	0.66 (0.54, 0.81)	
American Indian/ Alaska Native ^a	0	0.00 (0.00, 0.04)	0.01 (0.00, 0.05)	0.01 (0.00, 0.06)	0.85 (0.57, 1.57)	0.44 (0.34, 0.65)	
	10	0.01 (0.00, 0.03)	0.01 (0.00, 0.04)	0.05 (0.03, 0.11)	0.87 (0.58, 1.60)	0.45 (0.34, 0.66)	
	20	0.01 (0.00, 0.03)	0.05 (0.02, 0.10)	0.13 (0.08, 0.20)	0.87 (0.58, 1.61)	0.45 (0.35, 0.67)	
	30	0.04 (0.02, 0.09)	0.12 (0.07, 0.20)	0.30 (0.20, 0.42)	0.89 (0.59, 1.64)	0.46 (0.35, 0.68)	
	40	0.08 (0.05, 0.14)	0.26 (0.17, 0.38)	0.40 (0.27, 0.57)	0.87 (0.57, 1.66)	0.46 (0.35, 0.69)	
	50	0.19 (0.11, 0.30)	0.33 (0.21, 0.51)	0.50 (0.33, 0.75)	0.83 (0.52, 1.66)	0.47 (0.35, 0.71)	
	60	0.16 (0.07, 0.31)	0.34 (0.19, 0.59)	0.61 (0.35, 1.02)	0.71 (0.39, 1.61)	0.45 (0.32, 0.72)	
	70	0.22 (0.09, 0.46)	0.54 (0.26, 1.01)	- (- , -)	0.65 (0.31, 1.74)	0.34 (0.22, 0.66)	
	80	0.48 (0.18, 1.11)	- (- , -)	- (- , -)	0.66 (0.23, 2.29)	0.13 (0.04, 0.60)	
Hispanic ^b	0	0.01 (0.01, 0.01)	0.03 (0.02, 0.03)	0.05 (0.05, 0.06)	2.06 (1.93, 2.20)	0.76 (0.71, 0.82)	
	10	0.02 (0.01, 0.02)	0.04 (0.04, 0.05)	0.10 (0.10, 0.11)	2.07 (1.94, 2.22)	0.77 (0.72, 0.83)	
	20	0.03 (0.02, 0.03)	0.09 (0.08, 0.10)	0.22 (0.20, 0.23)	2.07 (1.94, 2.21)	0.77 (0.72, 0.83)	
	30	0.06 (0.05, 0.07)	0.19 (0.18, 0.21)	0.44 (0.41, 0.46)	2.06 (1.93, 2.21)	0.78 (0.73, 0.83)	
	40	0.13 (0.12, 0.15)	0.38 (0.36, 0.41)	0.76 (0.72, 0.81)	2.03 (1.90, 2.18)	0.78 (0.73, 0.83)	
	50	0.25 (0.23, 0.28)	0.65 (0.60, 0.70)	1.28 (1.20, 1.36)	1.96 (1.82, 2.11)	0.77 (0.72, 0.83)	
	60	0.42 (0.38, 0.46)	1.09 (1.02, 1.17)	1.61 (1.51, 1.73)	1.82 (1.68, 1.98)	0.75 (0.70, 0.81)	
	70	0.78 (0.71, 0.85)	1.38 (1.26, 1.50)	- (- , -)	1.61 (1.46, 1.79)	0.69 (0.63, 0.76)	
	80	0.85 (0.74, 0.97)	- (- , -)	- (- , -)	1.18 (1.00, 1.41)	0.53 (0.46, 0.62)	

Devcan Version 6.2.0, April 2006, National Cancer Institute (<http://srab.cancer.gov/devcan/>).

Source: Incidence data are from the SEER 17 areas (San Francisco, Connecticut, Detroit, Hawaii, Iowa, New Mexico, Seattle, Utah, Atlanta, San Jose-Monterey, Los Angeles, Alaska Native Registry, Rural Georgia, California excluding SF/SJM/LA, Kentucky, Louisiana and New Jersey). Mortality data are from the NCHS public use data file for the total US.

^a Underlying incidence and mortality data for American Indian/Alaska Native are based on the CHSDA (Contract Health Service Delivery Area) counties.

^b Hispanic is not mutually exclusive from whites, blacks, Asian/Pacific Islanders, and American Indians/Alaska Natives. Underlying incidence data for Hispanics are based on NHIA and exclude cases from the Alaska Native Registry and Kentucky. Underlying mortality data for Hispanics exclude deaths from Minnesota, New Hampshire and North Dakota.

- Statistic could not be calculated.

A percent or confidence interval value of 0.00 represents a value that is below 0.005.

Table XIX-13 - continued

NON-HODGKIN LYMPHOMA

Risk of Being Diagnosed With Cancer in 10, 20 and 30 Years, Lifetime Risk of Being Diagnosed with Cancer, and
Lifetime Risk of Dying from Cancer Given Cancer Free At Current Age
Females, 2002-2004 By Race/Ethnicity

Race/ Ethnicity	Current Age	Risk of Being Diagnosed with Cancer						Risk of Dying from Cancer	
		+10 yrs Percent (95% C.I.)	+20 yrs Percent (95% C.I.)	+30 yrs Percent (95% C.I.)	Eventually Percent (95% C.I.)	Eventually Percent (95% C.I.)			
All Races	0	0.00 (0.00, 0.01)	0.01 (0.01, 0.02)	0.04 (0.03, 0.04)	1.87 (1.85, 1.90)	0.77 (0.76, 0.78)			
	10	0.01 (0.01, 0.01)	0.03 (0.03, 0.04)	0.08 (0.08, 0.08)	1.89 (1.86, 1.92)	0.78 (0.77, 0.79)			
	20	0.02 (0.02, 0.02)	0.07 (0.07, 0.07)	0.17 (0.16, 0.17)	1.88 (1.86, 1.91)	0.78 (0.77, 0.79)			
	30	0.05 (0.04, 0.05)	0.15 (0.14, 0.15)	0.36 (0.36, 0.37)	1.87 (1.84, 1.90)	0.78 (0.77, 0.79)			
	40	0.10 (0.10, 0.10)	0.32 (0.31, 0.33)	0.74 (0.73, 0.76)	1.84 (1.81, 1.87)	0.78 (0.77, 0.79)			
	50	0.23 (0.22, 0.23)	0.66 (0.64, 0.67)	1.24 (1.22, 1.26)	1.78 (1.75, 1.81)	0.78 (0.77, 0.79)			
	60	0.45 (0.44, 0.47)	1.06 (1.04, 1.09)	1.52 (1.49, 1.55)	1.63 (1.60, 1.66)	0.77 (0.76, 0.78)			
	70	0.69 (0.67, 0.71)	1.20 (1.18, 1.23)	- (- , -)	1.33 (1.30, 1.35)	0.72 (0.71, 0.73)			
80	0.69 (0.67, 0.71)	- (- , -)	- (- , -)	0.86 (0.83, 0.88)	0.57 (0.56, 0.58)				
White	0	0.00 (0.00, 0.00)	0.01 (0.01, 0.02)	0.04 (0.03, 0.04)	1.97 (1.94, 2.00)	0.81 (0.80, 0.82)			
	10	0.01 (0.01, 0.01)	0.03 (0.03, 0.03)	0.08 (0.07, 0.08)	1.98 (1.95, 2.02)	0.82 (0.81, 0.83)			
	20	0.02 (0.02, 0.02)	0.07 (0.06, 0.07)	0.17 (0.16, 0.17)	1.98 (1.95, 2.01)	0.82 (0.81, 0.83)			
	30	0.05 (0.04, 0.05)	0.14 (0.14, 0.15)	0.37 (0.36, 0.38)	1.97 (1.94, 2.00)	0.82 (0.81, 0.83)			
	40	0.10 (0.10, 0.11)	0.33 (0.32, 0.34)	0.78 (0.76, 0.80)	1.94 (1.91, 1.97)	0.82 (0.81, 0.83)			
	50	0.23 (0.22, 0.24)	0.69 (0.68, 0.71)	1.31 (1.29, 1.34)	1.87 (1.84, 1.91)	0.82 (0.81, 0.83)			
	60	0.48 (0.47, 0.50)	1.13 (1.11, 1.16)	1.61 (1.58, 1.64)	1.72 (1.69, 1.75)	0.81 (0.80, 0.82)			
	70	0.73 (0.71, 0.75)	1.26 (1.24, 1.29)	- (- , -)	1.39 (1.36, 1.42)	0.75 (0.74, 0.76)			
80	0.72 (0.70, 0.74)	- (- , -)	- (- , -)	0.89 (0.86, 0.92)	0.60 (0.59, 0.61)				
Black	0	0.01 (0.00, 0.01)	0.02 (0.01, 0.02)	0.04 (0.03, 0.05)	1.11 (1.05, 1.18)	0.44 (0.42, 0.46)			
	10	0.01 (0.01, 0.01)	0.04 (0.03, 0.04)	0.10 (0.09, 0.11)	1.13 (1.06, 1.20)	0.45 (0.43, 0.47)			
	20	0.03 (0.02, 0.03)	0.09 (0.08, 0.10)	0.19 (0.18, 0.21)	1.12 (1.06, 1.19)	0.44 (0.42, 0.47)			
	30	0.06 (0.05, 0.07)	0.17 (0.15, 0.19)	0.35 (0.32, 0.37)	1.11 (1.04, 1.17)	0.44 (0.42, 0.46)			
	40	0.11 (0.10, 0.12)	0.29 (0.26, 0.31)	0.55 (0.51, 0.59)	1.06 (1.00, 1.13)	0.44 (0.42, 0.46)			
	50	0.19 (0.17, 0.21)	0.46 (0.43, 0.50)	0.78 (0.72, 0.83)	0.99 (0.93, 1.06)	0.44 (0.41, 0.46)			
	60	0.30 (0.27, 0.34)	0.64 (0.59, 0.70)	0.82 (0.76, 0.89)	0.88 (0.81, 0.95)	0.42 (0.40, 0.44)			
	70	0.41 (0.36, 0.46)	0.62 (0.56, 0.69)	- (- , -)	0.69 (0.63, 0.76)	0.37 (0.35, 0.40)			
80	0.32 (0.27, 0.38)	- (- , -)	- (- , -)	0.42 (0.36, 0.49)	0.27 (0.25, 0.30)				

Devcan Version 6.2.0, April 2006, National Cancer Institute (<http://srab.cancer.gov/devcan/>).

Source: Incidence data are from the SEER 17 areas (San Francisco, Connecticut, Detroit, Hawaii, Iowa, New Mexico, Seattle, Utah, Atlanta, San Jose-Monterey, Los Angeles, Alaska Native Registry, Rural Georgia, California excluding SF/SJM/LA, Kentucky, Louisiana and New Jersey). Mortality data are from the NCHS public use data file for the total US.

- Statistic could not be calculated.

A percent or confidence interval value of 0.00 represents a value that is below 0.005.

Table XIX-13 - continued

NON-HODGKIN LYMPHOMA

Risk of Being Diagnosed With Cancer in 10, 20 and 30 Years, Lifetime Risk of Being Diagnosed with Cancer, and
Lifetime Risk of Dying from Cancer Given Cancer Free At Current Age
Females, 2002-2004 By Race/Ethnicity

Race/ Ethnicity	Current Age	Risk of Being Diagnosed with Cancer				Risk of Dying from Cancer	
		+10 yrs Percent (95% C.I.)	+20 yrs Percent (95% C.I.)	+30 yrs Percent (95% C.I.)	Eventually Percent (95% C.I.)	Eventually Percent (95% C.I.)	
Asian/ Pacific Islander	0	0.00 (0.00, 0.01)	0.01 (0.01, 0.02)	0.03 (0.03, 0.04)	1.56 (1.44, 1.70)	0.73 (0.64, 0.83)	
	10	0.01 (0.01, 0.02)	0.03 (0.02, 0.04)	0.06 (0.05, 0.08)	1.57 (1.45, 1.71)	0.73 (0.64, 0.84)	
	20	0.02 (0.01, 0.03)	0.05 (0.04, 0.06)	0.12 (0.10, 0.13)	1.56 (1.44, 1.70)	0.73 (0.64, 0.84)	
	30	0.03 (0.03, 0.04)	0.10 (0.09, 0.11)	0.26 (0.24, 0.29)	1.55 (1.42, 1.69)	0.73 (0.64, 0.84)	
	40	0.07 (0.06, 0.08)	0.23 (0.21, 0.25)	0.51 (0.47, 0.55)	1.52 (1.40, 1.66)	0.73 (0.64, 0.84)	
	50	0.17 (0.15, 0.19)	0.45 (0.41, 0.49)	0.87 (0.81, 0.94)	1.47 (1.35, 1.61)	0.72 (0.63, 0.83)	
	60	0.29 (0.26, 0.32)	0.73 (0.67, 0.79)	1.15 (1.06, 1.25)	1.34 (1.22, 1.49)	0.71 (0.62, 0.82)	
	70	0.47 (0.42, 0.52)	0.92 (0.84, 1.01)	- (- , -)	1.12 (1.00, 1.27)	0.67 (0.58, 0.79)	
80	0.54 (0.47, 0.63)	- (- , -)	- (- , -)	0.78 (0.65, 0.95)	0.54 (0.43, 0.67)		
American Indian/ Alaska Native ^a	0	0.00 (0.00, 0.04)	0.01 (0.00, 0.06)	0.01 (0.00, 0.06)	0.98 (0.70, 1.55)	0.57 (0.41, 0.81)	
	10	0.01 (0.00, 0.03)	0.01 (0.00, 0.04)	0.03 (0.01, 0.07)	0.99 (0.71, 1.57)	0.58 (0.42, 0.83)	
	20	0.00 (0.00, 0.03)	0.02 (0.00, 0.05)	0.08 (0.04, 0.13)	0.99 (0.71, 1.57)	0.58 (0.42, 0.83)	
	30	0.02 (0.00, 0.05)	0.08 (0.04, 0.13)	0.22 (0.14, 0.32)	0.99 (0.71, 1.58)	0.59 (0.42, 0.84)	
	40	0.06 (0.03, 0.11)	0.20 (0.13, 0.31)	0.49 (0.34, 0.68)	1.00 (0.71, 1.60)	0.59 (0.42, 0.84)	
	50	0.15 (0.08, 0.24)	0.44 (0.30, 0.64)	0.71 (0.50, 0.99)	0.96 (0.67, 1.58)	0.59 (0.41, 0.86)	
	60	0.31 (0.19, 0.49)	0.59 (0.39, 0.87)	0.80 (0.54, 1.17)	0.86 (0.57, 1.51)	0.59 (0.41, 0.88)	
	70	0.32 (0.17, 0.56)	0.56 (0.32, 0.93)	- (- , -)	0.63 (0.36, 1.35)	0.60 (0.39, 0.93)	
80	0.32 (0.11, 0.73)	- (- , -)	- (- , -)	0.42 (0.15, 1.34)	0.54 (0.29, 0.98)		
Hispanic ^b	0	0.00 (0.00, 0.01)	0.01 (0.01, 0.01)	0.03 (0.02, 0.03)	1.84 (1.74, 1.97)	0.72 (0.68, 0.77)	
	10	0.01 (0.01, 0.01)	0.02 (0.02, 0.03)	0.06 (0.06, 0.07)	1.86 (1.75, 1.98)	0.73 (0.68, 0.78)	
	20	0.02 (0.01, 0.02)	0.06 (0.05, 0.07)	0.14 (0.13, 0.15)	1.86 (1.75, 1.98)	0.73 (0.68, 0.78)	
	30	0.04 (0.03, 0.05)	0.12 (0.11, 0.14)	0.32 (0.30, 0.35)	1.85 (1.74, 1.97)	0.73 (0.68, 0.78)	
	40	0.08 (0.08, 0.09)	0.28 (0.26, 0.31)	0.63 (0.59, 0.68)	1.82 (1.71, 1.94)	0.73 (0.68, 0.78)	
	50	0.20 (0.18, 0.22)	0.56 (0.52, 0.60)	1.14 (1.07, 1.21)	1.76 (1.65, 1.88)	0.72 (0.67, 0.77)	
	60	0.37 (0.34, 0.40)	0.97 (0.91, 1.04)	1.44 (1.35, 1.54)	1.61 (1.50, 1.74)	0.70 (0.66, 0.76)	
	70	0.66 (0.61, 0.72)	1.17 (1.08, 1.27)	- (- , -)	1.36 (1.25, 1.49)	0.65 (0.60, 0.71)	
80	0.65 (0.57, 0.73)	- (- , -)	- (- , -)	0.89 (0.77, 1.03)	0.51 (0.46, 0.58)		

Devcan Version 6.2.0, April 2006, National Cancer Institute (<http://srab.cancer.gov/devcan/>).

Source: Incidence data are from the SEER 17 areas (San Francisco, Connecticut, Detroit, Hawaii, Iowa, New Mexico, Seattle, Utah, Atlanta, San Jose-Monterey, Los Angeles, Alaska Native Registry, Rural Georgia, California excluding SF/SJM/LA, Kentucky, Louisiana and New Jersey). Mortality data are from the NCHS public use data file for the total US.

^a Underlying incidence and mortality data for American Indian/Alaska Native are based on the CHSDA (Contract Health Service Delivery Area) counties.

^b Hispanic is not mutually exclusive from whites, blacks, Asian/Pacific Islanders, and American Indians/Alaska Natives. Underlying incidence data for Hispanics are based on NHIA and exclude cases from the Alaska Native Registry and Kentucky. Underlying mortality data for Hispanics exclude deaths from Minnesota, New Hampshire and North Dakota.

- Statistic could not be calculated.

A percent or confidence interval value of 0.00 represents a value that is below 0.005.

Table XIX-14
NON-HODGKIN LYMPHOMA

SEER INCIDENCE AND U.S. MORTALITY
AGE-ADJUSTED RATES AND TRENDS^a
By Race/Ethnicity and Sex

SEER Incidence

RACE/ETHNICITY	Rate 2000-2004 ^b			Trend 1995-2004 ^c		
	Rate per 100,000 persons			APC (%)		
	Total	Males	Females	Total	Males	Females
All Races	19.3	23.2	16.3	0.1	-0.4	1.0*
White	20.2	24.1	17.0	0.2	-0.3	1.0*
White Hispanic ^d	16.8	19.6	14.5	-0.5	-1.1	0.4
White Non-Hispanic ^d	20.8	25.0	17.4	0.4*	-0.2	1.1*
Black	14.6	18.1	11.9	0.2	-0.7	1.5*
Asian/Pacific Islander	13.2	15.7	11.2	0.2	-0.6	1.4
Amer Ind/Alaska Nat ^e	10.4	11.6	9.5	0.4	-	-
Hispanic ^d	16.5	19.2	14.2	-0.4	-0.9	0.5

U.S. Mortality^f

RACE/ETHNICITY	Rate 2000-2004			Trend 1995-2004		
	Rate per 100,000 persons			APC (%)		
	Total	Males	Females	Total	Males	Females
All Races	7.6	9.6	6.2	-2.5*	-2.3*	-2.7*
White	7.9	9.9	6.4	-2.5*	-2.3*	-2.8*
White Hispanic ^d	6.0	7.2	5.0	-3.2*	-3.9*	-2.5*
White Non-Hispanic ^d	8.0	10.1	6.5	-2.4*	-2.1*	-2.7*
Black	5.2	6.5	4.3	-2.4*	-3.3*	-1.4*
Asian/Pacific Islander	4.8	5.8	3.9	-2.1*	-2.4*	-1.6
Amer Ind/Alaska Nat						
Total U.S.	4.3	4.8	3.8	-2.9	-4.5	-2.1
CHSDA Counties	5.5	6.1	5.0	0.5	-2.2	2.2
Non-CHSDA Counties	2.6	3.1	2.2	-9.0*	-	-
Hispanic ^d	5.7	6.9	4.8	-3.1*	-4.0*	-2.4*

- The APC is the Annual Percent Change over the time interval.
- Statistic not shown. Rate based on less than 16 cases for the time interval. Trend based on less than 10 cases for at least one year within the time interval.
- a Rates are age-adjusted to the 2000 US Std Population (19 age groups - Census P25-1130). Trends are based on rates age-adjusted to the 2000 US Std Population (19 age groups - Census P25-1130).
- b Incidence data used in calculating the rates are from the 17 SEER areas (San Francisco, Connecticut, Detroit, Hawaii, Iowa, New Mexico, Seattle, Utah, Atlanta, San Jose-Monterey, Los Angeles, Alaska Native Registry, Rural Georgia, California excluding SF/SJM/LA, Kentucky, Louisiana and New Jersey).
- c Incidence data used in calculating the trends are from the 13 SEER areas (San Francisco, Connecticut, Detroit, Hawaii, Iowa, New Mexico, Seattle, Utah, Atlanta, San Jose-Monterey, Los Angeles, Alaska Native Registry and Rural Georgia).
- d Hispanic and Non-Hispanic are not mutually exclusive from whites, blacks, Asian/Pacific Islanders, and American Indians/Alaska Natives. Incidence data for Hispanics and Non-Hispanics are based on NHIA and exclude cases from the Alaska Native Registry and Kentucky. The 2000-2004 Hispanic and Non-Hispanic death rates exclude deaths from Minnesota, New Hampshire and North Dakota. The 1995-2004 Hispanic and Non-Hispanic mortality trends exclude deaths from Maine, Minnesota, New Hampshire, North Dakota, and Oklahoma.
- e Incidence data for American Indian/Alaska Native are based on the CHSDA(Contract Health Service Delivery Area) counties.
- f Mortality data are analyzed from a public use file provided by the National Center for Health Statistics (NCHS).
- * The APC is significantly different from zero (p<.05).

Table XIX-15
NON-HODGKIN LYMPHOMA

AGE-ADJUSTED SEER INCIDENCE RATES^a
By Registry, Race and Sex

	All Races			Whites			Blacks		
	Total	Males	Females	Total	Males	Females	Total	Males	Females
<u>SEER INCIDENCE RATES^a, 2000-2004</u>									
REGISTRY									
Atlanta & Rural Georgia	17.8	21.5	14.9	19.2	22.9	16.4	14.2	18.1	11.2
Atlanta	17.9	21.8	14.9	19.2	23.1	16.2	14.5	18.6	11.4
Rural Georgia	16.1	17.0	14.9	19.9	20.3	19.2	9.7	-	-
California	18.6	22.4	15.4	19.3	23.2	16.0	14.4	17.7	11.5
Greater Bay Area	20.4	25.3	16.4	22.2	27.3	17.8	16.3	21.0	12.2
San Francisco-Oakland	20.7	26.4	16.0	22.6	28.3	17.7	16.7	22.0	12.3
San Jose-Monterey	20.0	23.3	17.3	21.5	25.7	18.2	13.9	14.0	-
Los Angeles	18.1	22.0	15.0	19.2	23.2	15.9	14.2	18.0	11.4
Greater California	18.1	21.5	15.3	18.5	22.0	15.6	13.3	15.5	11.0
Connecticut	20.4	24.5	17.1	20.8	25.2	17.4	14.6	16.2	13.5
Detroit	21.2	25.4	18.2	22.6	26.8	19.5	15.8	19.9	12.9
Hawaii	15.3	17.9	13.2	18.9	22.6	15.7	-	-	-
Iowa	19.6	22.8	17.1	19.6	22.8	17.0	13.4	18.3	-
Kentucky	19.3	22.1	16.9	19.4	22.0	17.2	14.4	20.4	10.1
Louisiana	18.9	22.8	16.0	20.6	24.6	17.7	13.6	16.5	11.3
New Jersey	21.2	25.6	17.9	21.9	26.3	18.6	15.7	19.6	12.7
New Mexico	15.8	18.1	13.9	16.2	18.6	14.3	11.8	-	-
Seattle-Puget Sound	22.4	27.6	18.3	23.3	28.9	18.8	14.7	15.1	14.5
Utah	19.2	23.2	15.7	19.4	23.5	15.8	-	-	-
9 SEER Areas ^b	19.9	24.2	16.6	20.9	25.3	17.4	15.3	18.9	12.5
11 SEER Areas ^b	19.5	23.6	16.3	20.6	24.9	17.1	15.0	18.6	12.2
13 SEER Areas ^b	19.5	23.6	16.3	20.6	24.8	17.1	14.9	18.5	12.2
17 SEER Areas ^b	19.3	23.2	16.3	20.2	24.1	17.0	14.6	18.1	11.9

^a Rates are per 100,000 and are age-adjusted to the 2000 US Std Population (19 age groups - Census P25-1130)

^b The SEER 9 areas are San Francisco, Connecticut, Detroit, Hawaii, Iowa, New Mexico, Seattle, Utah and Atlanta.

The SEER 11 areas comprise the SEER 9 areas plus San Jose-Monterey and Los Angeles.

The SEER 13 areas comprise the SEER 11 areas plus the Alaska Native Registry and Rural Georgia.

The SEER 17 areas comprise the SEER 13 areas plus California excluding SF/SJM/LA, Kentucky, Louisiana and New Jersey

- Statistic not shown. Rate based on less than 16 cases for the time interval.

Table XIX-16
NON-HODGKIN LYMPHOMA

AGE-ADJUSTED SEER DEATH RATES^a
By Registry, Race and Sex

	All Races			Whites			Blacks		
	Total	Males	Females	Total	Males	Females	Total	Males	Females
<u>SEER DEATH RATES^a, 2000-2004</u>									
REGISTRY									
Atlanta & Rural Georgia	6.6	8.3	5.5	7.3	9.0	6.2	4.4	5.6	3.5
Atlanta	6.7	8.5	5.5	7.4	9.1	6.2	4.3	5.8	3.4
Rural Georgia	5.5	-	5.4	6.1	-	-	-	-	-
California	7.1	9.0	5.6	7.5	9.5	5.9	5.4	6.7	4.4
Greater Bay Area	7.4	9.5	5.9	8.0	10.3	6.3	6.0	8.0	4.5
San Francisco-Oakland	7.6	10.0	5.8	8.4	11.2	6.3	5.9	8.0	4.4
San Jose-Monterey	7.0	8.3	6.0	7.4	8.7	6.3	-	-	-
Los Angeles	6.6	8.3	5.3	7.1	9.1	5.7	4.9	5.7	4.2
Greater California	7.2	9.1	5.7	7.4	9.4	5.9	5.8	6.8	4.7
Connecticut	7.4	9.2	6.1	7.6	9.5	6.2	4.4	5.1	4.1
Detroit	7.6	10.0	6.0	8.2	10.8	6.4	5.4	7.1	4.2
Hawaii	5.8	7.4	4.5	6.7	8.7	4.9	-	-	-
Iowa	8.4	10.3	7.0	8.4	10.3	7.1	-	-	-
Kentucky	8.0	10.2	6.4	8.1	10.2	6.6	5.9	8.8	4.0
Louisiana	7.9	9.7	6.6	8.7	10.7	7.2	5.6	6.6	4.9
New Jersey	7.9	10.2	6.3	8.3	10.6	6.6	5.7	8.1	3.9
New Mexico	6.7	8.3	5.4	6.7	8.4	5.3	-	-	-
Seattle-Puget Sound	8.2	11.1	6.1	8.5	11.5	6.2	5.0	5.9	-
Utah	7.6	9.8	5.8	7.7	10.0	5.7	-	-	-
9 SEER Areas ^b	7.5	9.7	6.0	8.0	10.3	6.3	5.0	6.5	4.0
11 SEER Areas ^b	7.3	9.3	5.8	7.8	9.9	6.2	5.0	6.3	4.1
13 SEER Areas ^b	7.3	9.3	5.8	7.8	9.9	6.2	5.0	6.3	4.1
17 SEER Areas ^b	7.4	9.4	5.9	7.8	9.9	6.2	5.3	6.8	4.2
Total U.S.	7.6	9.6	6.2	7.9	9.9	6.4	5.2	6.5	4.3

^a NCHS public use data file for the total US. Rates are per 100,000 and are age-adjusted to the 2000 US Std Population (19 age groups - Census P25-1130).

^b The SEER 9 areas are San Francisco, Connecticut, Detroit, Hawaii, Iowa, New Mexico, Seattle, Utah and Atlanta.

The SEER 11 areas comprise the SEER 9 areas plus San Jose-Monterey and Los Angeles.

The SEER 13 areas comprise the SEER 11 areas plus the Alaska Native Registry and Rural Georgia.

The SEER 17 areas comprise the SEER 13 areas plus California excluding SF/SJM/LA, Kentucky, Louisiana and New Jersey

- Statistic not shown. Rate based on less than 16 cases for the time interval.

Table XIX-17
NON-HODGKIN LYMPHOMAAVERAGE ANNUAL AGE-ADJUSTED CANCER DEATH^a RATES BY STATE, ALL RACES, 2000-2004

Males and Females

State	Rate	SE	Rank	PD	State	Rate	SE	Rank	PD
TOTAL U.S.	7.6	0.02							
High Five States									
Oregon	8.6 ^b	0.22	(01)	13.2					
Indiana	8.5 ^b	0.17	(02)	11.8					
Kansas	8.5 ^b	0.24	(03)	11.8					
Minnesota	8.5 ^b	0.18	(04)	11.8					
Iowa	8.4	0.22	(05)	10.5					
Low Five States									
Nevada	6.8	0.27	(47)	-10.5					
Mississippi	6.7 ^b	0.22	(48)	-11.8					
New Mexico	6.7	0.28	(49)	-11.8					
District of Columbia	6.3	0.48	(50)	-17.1 ^c					
Hawaii	5.8 ^b	0.29	(51)	-23.7 ^c					
Alabama	7.5	0.18	(31)	-1.3	Montana	7.5	0.39	(32)	-1.3
Alaska	7.0	0.67	(44)	-7.9	Nebraska	7.7	0.29	(27)	1.3
Arizona	7.2	0.16	(40)	-5.3	Nevada	6.8	0.27	(47)	-10.5
Arkansas	7.6	0.23	(29)	0.0	New Hampshire	8.1	0.36	(16)	6.6
California	7.1 ^b	0.07	(42)	-6.6	New Jersey	7.9	0.13	(22)	3.9
Colorado	7.4	0.20	(35)	-2.6	New Mexico	6.7	0.28	(49)	-11.8
Connecticut	7.4	0.20	(33)	-2.6	New York	7.0 ^b	0.08	(43)	-7.9
Delaware	8.1	0.44	(17)	6.6	North Carolina	7.4	0.14	(34)	-2.6
District of Columbia	6.3	0.48	(50)	-17.1 ^c	North Dakota	7.7	0.46	(26)	1.3
Florida	7.2 ^b	0.08	(39)	-5.3	Ohio	8.3 ^b	0.12	(08)	9.2
Georgia	6.9 ^b	0.14	(46)	-9.2	Oklahoma	8.0	0.21	(18)	5.3
Hawaii	5.8 ^b	0.29	(51)	-23.7 ^c	Oregon	8.6 ^b	0.22	(01)	13.2
Idaho	7.9	0.36	(23)	3.9	Pennsylvania	8.2 ^b	0.10	(11)	7.9
Illinois	7.8	0.11	(24)	2.6	Rhode Island	8.1	0.37	(15)	6.6
Indiana	8.5 ^b	0.17	(02)	11.8	South Carolina	7.0	0.19	(45)	-7.9
Iowa	8.4	0.22	(05)	10.5	South Dakota	8.3	0.44	(06)	9.2
Kansas	8.5 ^b	0.24	(03)	11.8	Tennessee	8.2	0.17	(12)	7.9
Kentucky	8.0	0.20	(19)	5.3	Texas	7.4	0.09	(36)	-2.6
Louisiana	7.9	0.19	(21)	3.9	Utah	7.6	0.30	(30)	0.0
Maine	7.9	0.33	(20)	3.9	Vermont	8.2	0.51	(09)	7.9
Maryland	7.1	0.17	(41)	-6.6	Virginia	7.2	0.15	(38)	-5.3
Massachusetts	7.6	0.15	(28)	0.0	Washington	8.2 ^b	0.17	(10)	7.9
Michigan	8.3 ^b	0.13	(07)	9.2	West Virginia	8.2	0.28	(14)	7.9
Minnesota	8.5 ^b	0.18	(04)	11.8	Wisconsin	7.7	0.16	(25)	1.3
Mississippi	6.7 ^b	0.22	(48)	-11.8	Wyoming	7.3	0.55	(37)	-3.9
Missouri	8.2 ^b	0.16	(13)	7.9					

^a NCHS public use data file. Rates are per 100,000 and are age-adjusted to the 2000 US Std Population (19 age groups - Census P25-1130).

^b Difference between state rate and total U.S. rate is statistically significant ($p < .0002$).

^c Absolute percent difference between state rate and total U.S. rate is 15% or more.

SE Standard error of the rate.

PD Percent difference between state rate and total U.S. rate.

Table XIX-18
NON-HODGKIN LYMPHOMAAVERAGE ANNUAL AGE-ADJUSTED CANCER DEATH^a RATES BY STATE, ALL RACES, 2000-2004

Males

State	Rate	SE	Rank	PD	State	Rate	SE	Rank	PD
TOTAL U.S.	9.6	0.04							
HHigh Five States									
Vermont	11.0	0.91	(01)	14.6					
Washington	10.9 ^b	0.30	(02)	13.5					
Delaware	10.9	0.80	(03)	13.5					
Minnesota	10.8 ^b	0.32	(04)	12.5					
Kansas	10.7	0.42	(05)	11.5					
LLow Five States									
South Carolina	8.4	0.33	(47)	-12.5					
District of Columbia	8.3	0.88	(48)	-13.5					
New Mexico	8.3	0.47	(49)	-13.5					
Wyoming	7.8	0.89	(50)	-18.8 ^c					
Hawaii	7.4 ^b	0.50	(51)	-22.9 ^c					
Alabama	9.2	0.32	(35)	-4.2	Montana	9.9	0.69	(22)	3.1
Alaska	8.4	1.15	(46)	-12.5	Nebraska	9.3	0.49	(29)	-3.1
Arizona	8.7	0.27	(43)	-9.4	Nevada	8.6	0.47	(44)	-10.4
Arkansas	9.9	0.41	(23)	3.1	New Hampshire	10.3	0.63	(15)	7.3
California	9.0 ^b	0.12	(40)	-6.3	New Jersey	10.2	0.24	(16)	6.3
Colorado	9.3	0.36	(31)	-3.1	New Mexico	8.3	0.47	(49)	-13.5
Connecticut	9.2	0.34	(34)	-4.2	New York	8.9 ^b	0.15	(42)	-7.3
Delaware	10.9	0.80	(03)	13.5	North Carolina	9.2	0.24	(32)	-4.2
District of Columbia	8.3	0.88	(48)	-13.5	North Dakota	9.9	0.79	(24)	3.1
Florida	9.2	0.14	(33)	-4.2	Ohio	10.4 ^b	0.21	(10)	8.3
Georgia	8.5 ^b	0.26	(45)	-11.5	Oklahoma	10.3	0.37	(12)	7.3
Hawaii	7.4 ^b	0.50	(51)	-22.9 ^c	Oregon	10.6	0.37	(07)	10.4
Idaho	9.1	0.58	(38)	-5.2	Pennsylvania	10.3 ^b	0.18	(11)	7.3
Illinois	9.8	0.20	(27)	2.1	Rhode Island	9.9	0.64	(21)	3.1
Indiana	10.6 ^b	0.29	(06)	10.4	South Carolina	8.4	0.33	(47)	-12.5
Iowa	10.3	0.38	(14)	7.3	South Dakota	10.2	0.75	(18)	6.3
Kansas	10.7	0.42	(05)	11.5	Tennessee	10.5	0.31	(09)	9.4
Kentucky	10.2	0.36	(17)	6.3	Texas	9.0 ^b	0.16	(39)	-6.3
Louisiana	9.7	0.34	(28)	1.0	Utah	9.8	0.53	(26)	2.1
Maine	10.0	0.58	(20)	4.2	Vermont	11.0	0.91	(01)	14.6
Maryland	9.1	0.30	(37)	-5.2	Virginia	9.2	0.26	(36)	-4.2
Massachusetts	9.3	0.26	(30)	-3.1	Washington	10.9 ^b	0.30	(02)	13.5
Michigan	10.6 ^b	0.23	(08)	10.4	West Virginia	10.1	0.48	(19)	5.2
Minnesota	10.8 ^b	0.32	(04)	12.5	Wisconsin	9.8	0.29	(25)	2.1
Mississippi	8.9	0.40	(41)	-7.3	Wyoming	7.8	0.89	(50)	-18.8 ^c
Missouri	10.3	0.29	(13)	7.3					

^a NCHS public use data file. Rates are per 100,000 and are age-adjusted to the 2000 US Std Population (19 age groups - Census P25-1130).

^b Difference between state rate and total U.S. rate is statistically significant ($p < .0002$).

^c Absolute percent difference between state rate and total U.S. rate is 15% or more.

SE Standard error of the rate.

PD Percent difference between state rate and total U.S. rate.

Table XIX-19
NON-HODGKIN LYMPHOMAAVERAGE ANNUAL AGE-ADJUSTED CANCER DEATH^a RATES BY STATE, ALL RACES, 2000-2004

Females

State	Rate	SE	Rank	PD	State	Rate	SE	Rank	PD
TOTAL U.S.	6.2	0.03							
High Five States									
Wyoming	7.1	0.73	(01)	14.5					
Oregon	7.0	0.26	(02)	12.9					
Iowa	7.0	0.27	(03)	12.9					
Kansas	7.0	0.30	(04)	12.9					
Indiana	7.0 ^b	0.20	(05)	12.9					
Low Five States									
Nevada	5.5	0.33	(47)	-11.3					
New Mexico	5.4	0.33	(48)	-12.9					
Mississippi	5.2 ^b	0.25	(49)	-16.1 ^c					
District of Columbia	5.0	0.55	(50)	-19.4 ^c					
Hawaii	4.5 ^b	0.34	(51)	-27.4 ^c					
Alabama	6.3	0.21	(23)	1.6	Montana	5.8	0.46	(39)	-6.5
Alaska	5.7	0.83	(41)	-8.1	Nebraska	6.4	0.35	(20)	3.2
Arizona	6.0	0.20	(34)	-3.2	Nevada	5.5	0.33	(47)	-11.3
Arkansas	6.0	0.27	(35)	-3.2	New Hampshire	6.5	0.43	(17)	4.8
California	5.6 ^b	0.08	(46)	-9.7	New Jersey	6.3	0.15	(24)	1.6
Colorado	6.1	0.24	(31)	-1.6	New Mexico	5.4	0.33	(48)	-12.9
Connecticut	6.1	0.23	(29)	-1.6	New York	5.7 ^b	0.10	(43)	-8.1
Delaware	6.0	0.50	(33)	-3.2	North Carolina	6.0	0.16	(32)	-3.2
District of Columbia	5.0	0.55	(50)	-19.4 ^c	North Dakota	5.9	0.53	(36)	-4.8
Florida	5.6 ^b	0.10	(44)	-9.7	Ohio	6.7 ^b	0.14	(11)	8.1
Georgia	5.7	0.17	(42)	-8.1	Oklahoma	6.2	0.24	(27)	0.0
Hawaii	4.5 ^b	0.34	(51)	-27.4 ^c	Oregon	7.0	0.26	(02)	12.9
Idaho	6.8	0.44	(07)	9.7	Pennsylvania	6.7 ^b	0.12	(13)	8.1
Illinois	6.3	0.13	(22)	1.6	Rhode Island	6.7	0.43	(12)	8.1
Indiana	7.0 ^b	0.20	(05)	12.9	South Carolina	5.9	0.22	(37)	-4.8
Iowa	7.0	0.27	(03)	12.9	South Dakota	6.8	0.52	(06)	9.7
Kansas	7.0	0.30	(04)	12.9	Tennessee	6.6	0.20	(16)	6.5
Kentucky	6.4	0.23	(21)	3.2	Texas	6.1	0.11	(30)	-1.6
Louisiana	6.6	0.23	(15)	6.5	Utah	5.8	0.36	(40)	-6.5
Maine	6.5	0.39	(19)	4.8	Vermont	6.3	0.58	(25)	1.6
Maryland	5.6	0.19	(45)	-9.7	Virginia	5.9	0.17	(38)	-4.8
Massachusetts	6.5	0.18	(18)	4.8	Washington	6.2	0.20	(26)	0.0
Michigan	6.7	0.15	(14)	8.1	West Virginia	6.7	0.33	(09)	8.1
Minnesota	6.7	0.22	(10)	8.1	Wisconsin	6.2	0.19	(28)	0.0
Mississippi	5.2 ^b	0.25	(49)	-16.1 ^c	Wyoming	7.1	0.73	(01)	14.5
Missouri	6.8	0.20	(08)	9.7					

^a NCHS public use data file. Rates are per 100,000 and are age-adjusted to the 2000 US Std Population (19 age groups - Census P25-1130).

^b Difference between state rate and total U.S. rate is statistically significant ($p < .0002$).

^c Absolute percent difference between state rate and total U.S. rate is 15% or more.

SE Standard error of the rate.

PD Percent difference between state rate and total U.S. rate.

Table XIX-20
NON-HODGKIN LYMPHOMA (Invasive)

Estimated United States Cancer Prevalence Counts^a on January 1, 2004
By Race/Ethnicity, Sex and Years Since Diagnosis

Years Since Diagnosis	0 to <5	5 to <10	10 to <15	15 to <20	20 to <25	0 to <14 ^e	0 to <29 ^e	>=29 ^g	Complete ^h
Race/Sex									
All Races ^b	165,166	95,646	52,508	31,037	16,904	305,401	368,283	12,846	381,129
Males	86,010	49,465	27,027	16,066	8,691	158,561	190,649	6,767	197,416
Females	79,156	46,181	25,481	14,971	8,213	146,840	177,634	6,079	183,713
White ^b	146,983	85,106	47,343	28,235	15,426	272,139	329,596	13,018	342,614
Males	76,940	43,608	24,348	14,636	7,954	141,247	170,662	7,257	177,919
Females	70,043	41,498	22,995	13,599	7,472	130,892	158,934	5,761	164,695
Black ^b	11,589	6,714	3,331	1,839	1,007	21,259	24,849	941	25,790
Males	5,669	3,797	1,668	971	466	10,971	12,722	418	13,140
Females	5,920	2,917	1,663	868	541	10,288	12,127	523	12,650
Asian/Pacific Islander ^c	3,888	2,083	+	+	+	6,899	+	+	+
Males	2,004	1,076	+	+	+	3,539	+	+	+
Females	1,884	1,007	+	+	+	3,360	+	+	+
Hispanic ^d	9,816	4,920	+	+	+	16,972	+	+	+
Males	5,206	2,559	+	+	+	8,922	+	+	+
Females	4,610	2,361	+	+	+	8,050	+	+	+

Estimated prevalence percent^a on January 1, 2004, of the SEER 11 population diagnosed in the previous 10 years
By Age at Prevalence, Race/Ethnicity and Sex

Age at Prevalence	Age Specific (Crude)										Age-Adjusted ^f
	All Ages	0-9	10-19	20-29	30-39	40-49	50-59	60-69	70-79	80+	All Ages
Race/Sex											
All Races ^c	0.0801%	0.0024%	0.0092%	0.0148%	0.0302%	0.0644%	0.1319%	0.2425%	0.3634%	0.3565%	0.0838%
Males	0.0845%	0.0032%	0.0126%	0.0177%	0.0346%	0.0764%	0.1515%	0.2709%	0.4050%	0.4004%	0.0954%
Females	0.0759%	0.0015%	0.0056%	0.0117%	0.0256%	0.0524%	0.1133%	0.2171%	0.3320%	0.3325%	0.0737%
White ^c	0.0889%	0.0025%	0.0096%	0.0149%	0.0314%	0.0672%	0.1394%	0.2656%	0.3935%	0.3770%	0.0895%
Males	0.0931%	0.0034%	0.0131%	0.0176%	0.0361%	0.0796%	0.1606%	0.2961%	0.4330%	0.4225%	0.1014%
Females	0.0847%	0.0017%	0.0059%	0.0119%	0.0263%	0.0546%	0.1187%	0.2376%	0.3630%	0.3524%	0.0788%
Black ^c	0.0473%	0.0015%	0.0065%	0.0162%	0.0320%	0.0616%	0.1141%	0.1517%	0.1858%	0.1590%	0.0578%
Males	0.0518%	0.0021%	0.0098%	0.0189%	0.0366%	0.0752%	0.1372%	0.1618%	0.2163%	0.1809%	0.0673%
Females	0.0432%	-	0.0031%	0.0137%	0.0279%	0.0496%	0.0949%	0.1439%	0.1659%	0.1485%	0.0502%
Asian/Pacific Islander ^c	0.0509%	0.0019%	0.0103%	0.0121%	0.0184%	0.0408%	0.0825%	0.1359%	0.2449%	0.2698%	0.0549%
Males	0.0535%	0.0025%	0.0130%	0.0164%	0.0209%	0.0490%	0.0832%	0.1475%	0.2888%	0.3038%	0.0623%
Females	0.0485%	-	0.0073%	0.0079%	0.0161%	0.0334%	0.0819%	0.1262%	0.2133%	0.2472%	0.0489%
Hispanic ^d	0.0361%	0.0022%	0.0075%	0.0092%	0.0225%	0.0465%	0.0970%	0.1764%	0.2815%	0.2474%	0.0621%
Males	0.0367%	0.0027%	0.0105%	0.0112%	0.0261%	0.0532%	0.1083%	0.1813%	0.2936%	0.2430%	0.0665%
Females	0.0355%	0.0017%	0.0044%	0.0069%	0.0184%	0.0395%	0.0865%	0.1724%	0.2728%	0.2499%	0.0576%

- ^a US 2004 cancer prevalence counts are based on 2004 cancer prevalence proportions from the SEER registries and 1/1/2004 US population estimates based on the average of 2003 and 2004 population estimates from the US Bureau of the Census. Prevalence was calculated using the First Malignant Primary Only for a person.
- ^{b c d} Statistics based on (b) SEER 9 Areas (c) SEER 11 Areas and Rural Georgia (d) NHIA for Hispanic for SEER 11 Areas and Rural Georgia.
- ^e Maximum limited-duration prevalence: 29 years for 1975-2004 SEER 9 data; 14 years for 1990-2004 SEER 11 data (used to calculate prevalence for Hispanics and Asian Pacific Islanders).
- ^f Percentages are age-adjusted to the 2000 US Standard Population (19 age groups - Census P25-1130) by 5-year age groups.
- ^{g h} (g) Cases diagnosed more than 29 years ago were estimated using the completeness index method (Capocaccia et. al. 1997, Merrill et. al. 2000). (h) Complete prevalence is obtained by summing 0 to <29 and >=29.
- Statistic not shown. Statistic based on fewer than 5 cases estimated alive in SEER for the time interval.
- + Not available.

SEER Incidence, Delay Adjusted Incidence and US Death Rates^a Non-Hodgkin Lymphoma, by Race and Sex

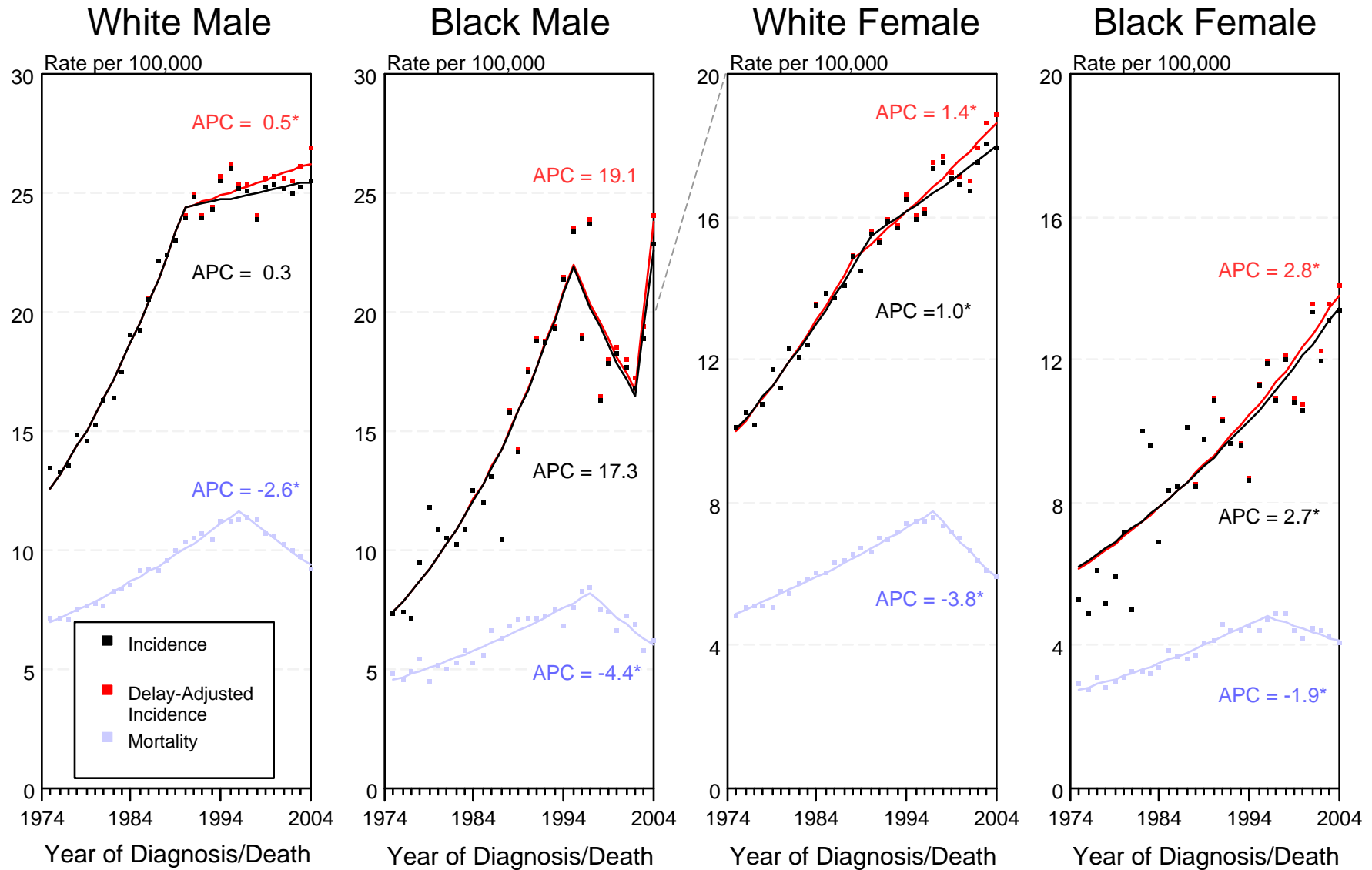


Figure XIX-1

^a Source: SEER 9 areas and NCHS public use data file for the total US. Rates are age-adjusted to the 2000 US Std Population (19 age groups - Census P25-1103). Regression lines and APCs are calculated using the Joinpoint Regression Program Version 3.0, April 2005, National Cancer Institute.

The APC is the Annual Percent Change for the regression line segments. The APC shown on the graph is for the most recent trend.

* The APC is significantly different from zero ($p < 0.05$).

SEER Incidence and US Death Rates^a Non-Hodgkin Lymphoma, Both Sexes

Joinpoint Analyses for Whites and Blacks from 1975-2004 and for Asian/Pacific Islanders, American Indians/Alaska Natives and Hispanics from 1992-2004

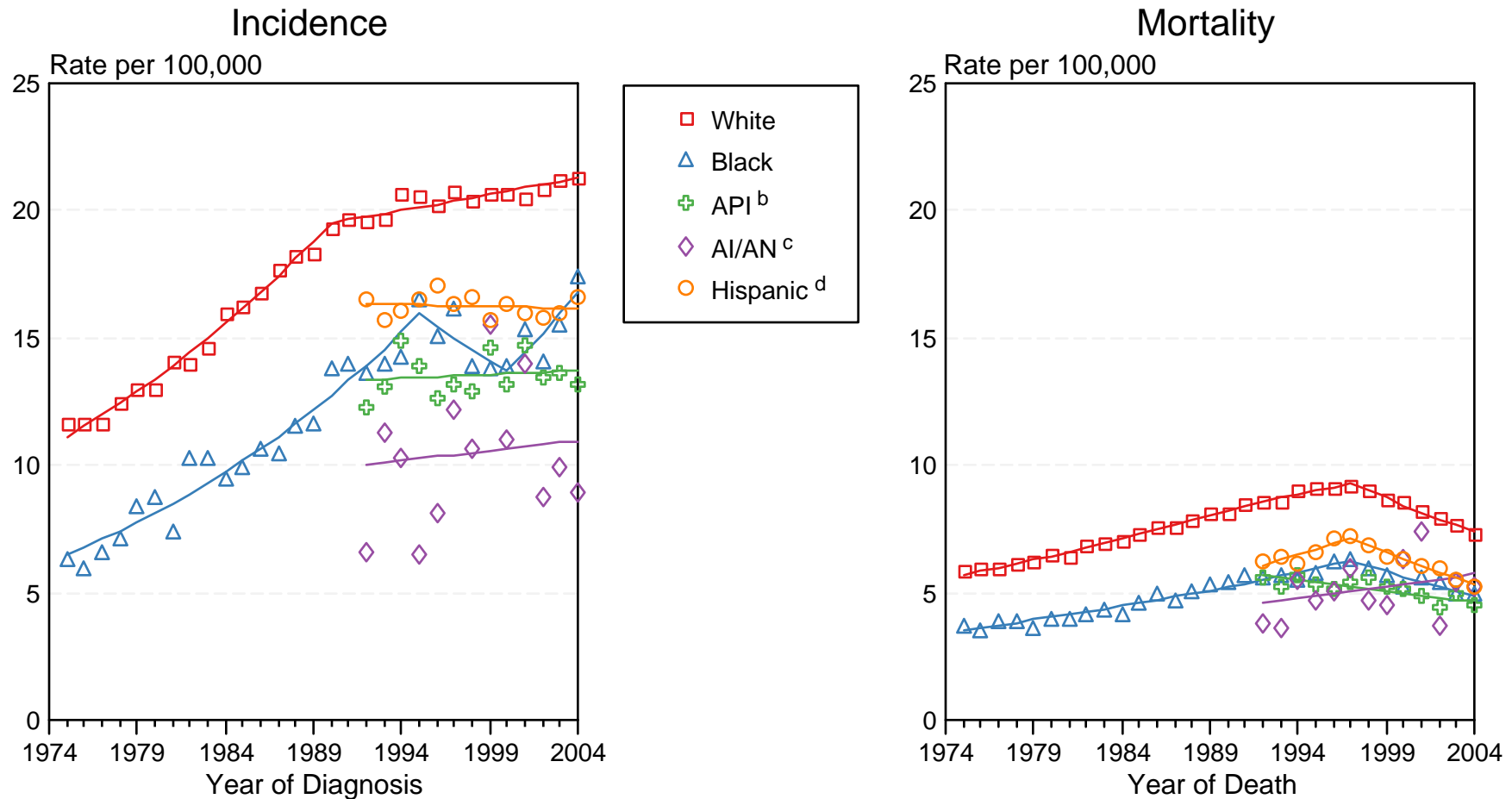


Figure XIX-2

Source: Incidence data for whites and blacks are from the SEER 9 areas (San Francisco, Connecticut, Detroit, Hawaii, Iowa, New Mexico, Seattle, Utah, Atlanta). Incidence data for Asian/Pacific Islanders, American Indians/Alaska Natives and Hispanics are from the SEER 13 Areas (SEER 9 Areas, San Jose-Monterey, Los Angeles, Alaska Native Registry and Rural Georgia). Mortality data are from NCHS public use data file for the total US.

^a Rates are age-adjusted to the 2000 US Std Population (19 age groups - Census P25-1103).

Regression lines are calculated using the Joinpoint Regression Program Version 3.0, April 2005, National Cancer Institute.

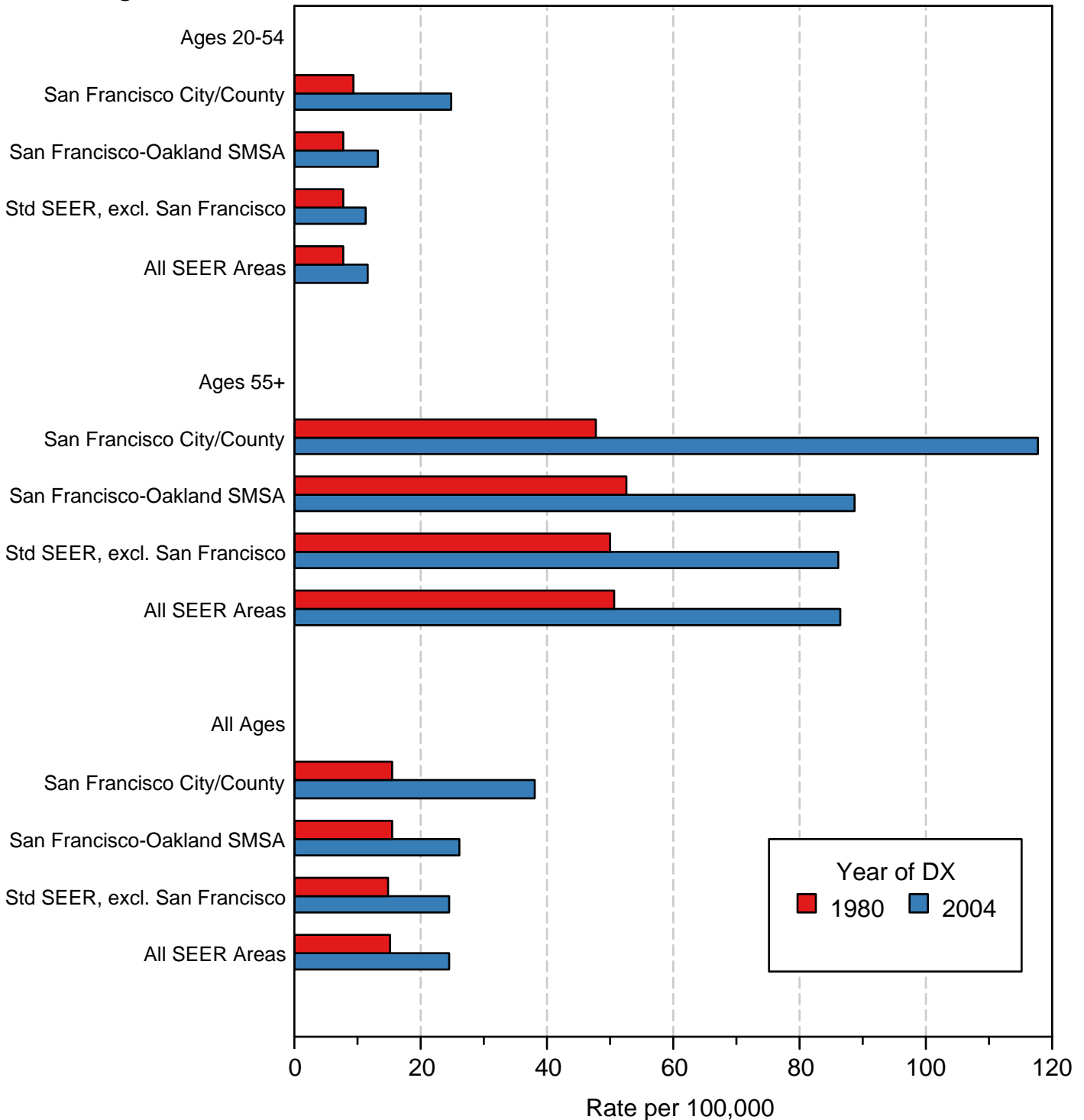
^b API = Asian/Pacific Islander.

^c AI/AN = American Indian/Alaska Native. Rates for American Indian/Alaska Native are based on the CHSDA(Contract Health Service Delivery Area) counties.

^d Hispanic is not mutually exclusive from whites, blacks, Asian/Pacific Islanders, and American Indians/Alaska Natives. Incidence data for Hispanics are based on NHIA and exclude cases from the Alaska Native Registry. Mortality data for Hispanics exclude cases from Connecticut, Maine, Maryland, Minnesota, New Hampshire, New York, North Dakota, Oklahoma, and Vermont.

Non-Hodgkin Lymphoma Incidence Rates, 1980 vs 2004 Males

Age/Area



Source: SEER 9 areas. Rates are age-adjusted to the 2000 US Std Population (19 age groups - Census P25-1103).

Non-Hodgkin Lymphoma SEER Incidence by Age 1975-1977 vs 2022-2004 All Races, Males

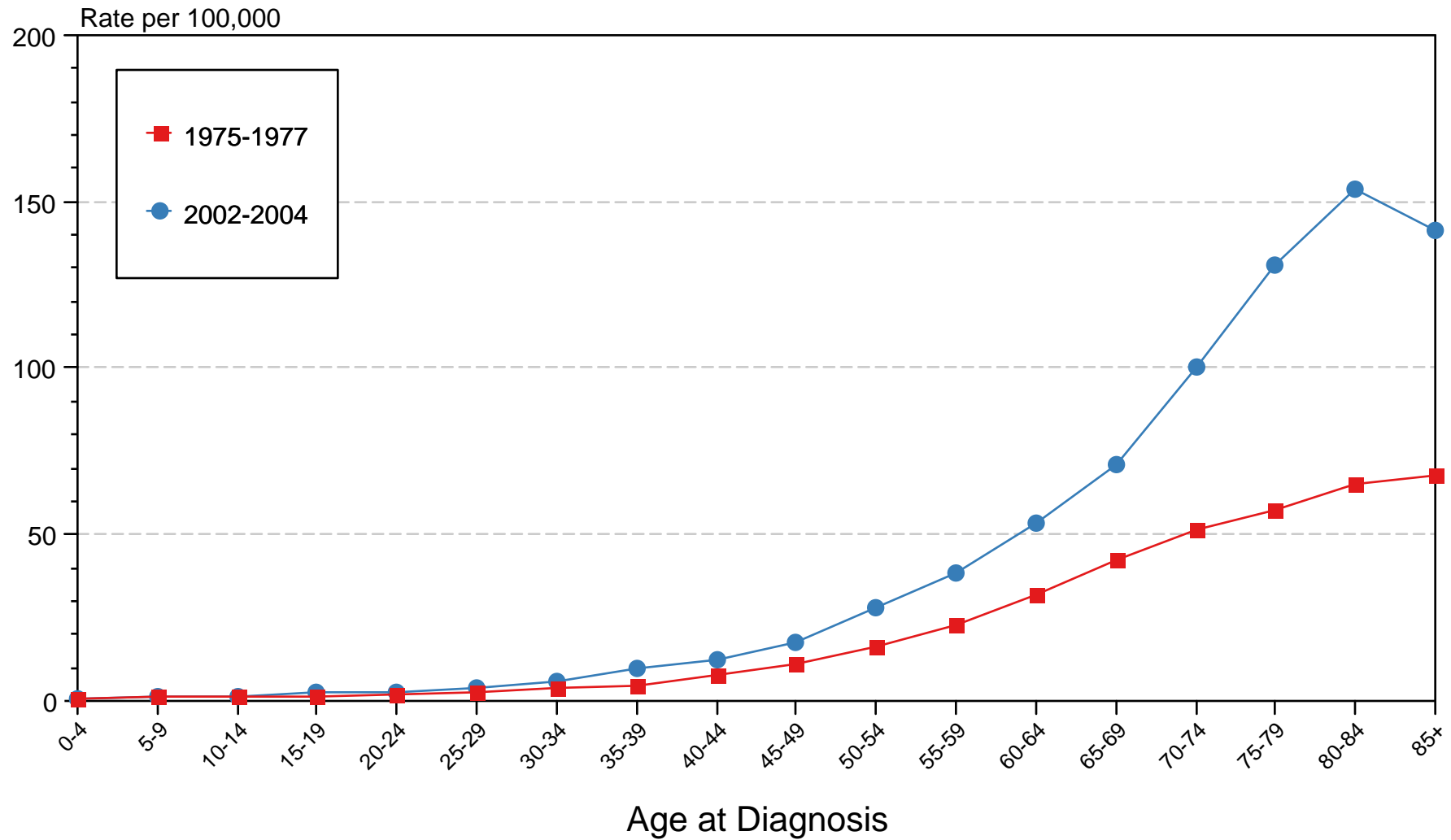


Figure XIX-4

Source: SEER 9 areas. Rates are age-adjusted as appropriate to the 2000 US Std Population (19 age groups - Census P25-1103).