

Tobacco Use Supplement to the Current Population Survey:

Data for Monitoring Progress in State Tobacco Control on the Micro & Macro Levels

Anne Hartman

TUS-CPS Background

- Key source of U.S. national, state, and sub-state level data on tobacco use & tobacco control policy
- Supplement to the BLS' HH Current Population Survey (CPS) conducted by the Census Bureau
 - demography, labor force & unemployment stats
 - monthly & uses panel design for efficiency of sampling
- NCI sponsored cross-sectional, triennial survey since 1992; co-sponsored with OSH/CDC since 2001
- Nationally representative sample
 - 240,000 civilian individuals aged 15+
 - 75% by phone & 25% in person visit (now 18+: 65% vs 35%)_
 - 83-88% response rate for self + proxy; 63 -72% for self only
- Translated into Spanish

TUS-CPS Unique Resource

- Track trends in tobacco use over time (health disparity subgroups)
- Evaluate tobacco control programs (ASSIST, CA, NTCP, SIMSMOKE)
- Monitor tobacco control on policy/macro level (NCI-TCPR, HP2010, Amer. Legacy Found.)
 - workplace policies
 - home restrictions
 - doctor/dentist advice to stop smoking
- Analyze economic aspects of tobacco use in conjunction with CPS detailed -
 - occupational & economic data – March ASEC
 - linkage to other CPS supplements (Internet & Computer Use, Food Security, Time Use)

TUS-CPS Topics 1992-2002

- Prevalence & patterns of tobacco use :
 - cigarette use patterns
 - ever & current use of pipes, cigars, chewing tobacco & snuff
- Cigarette smoking quit attempts & intentions
- Medical & dental advice to quit
- Work place and home smoking policies
- Attitudes towards:
 - smoking in public places
 - ease of youth access to tobacco
 - tobacco advertising & promotion

Topics of Published Papers

- Smoking cessation
- Stages of change
- Immigrants & smoking
- Adolescent/young adult smoking
- Some day smoking
- Hardcore smoking
- Racial variations and smoking
- Initiation rates using retrospective methods
- Physician advice
- Attitudes towards smoking
- Workplace policies
- Home policies
- Smokeless tobacco
- Combining data for making small area estimates
- Modeling impact of tobacco control policies

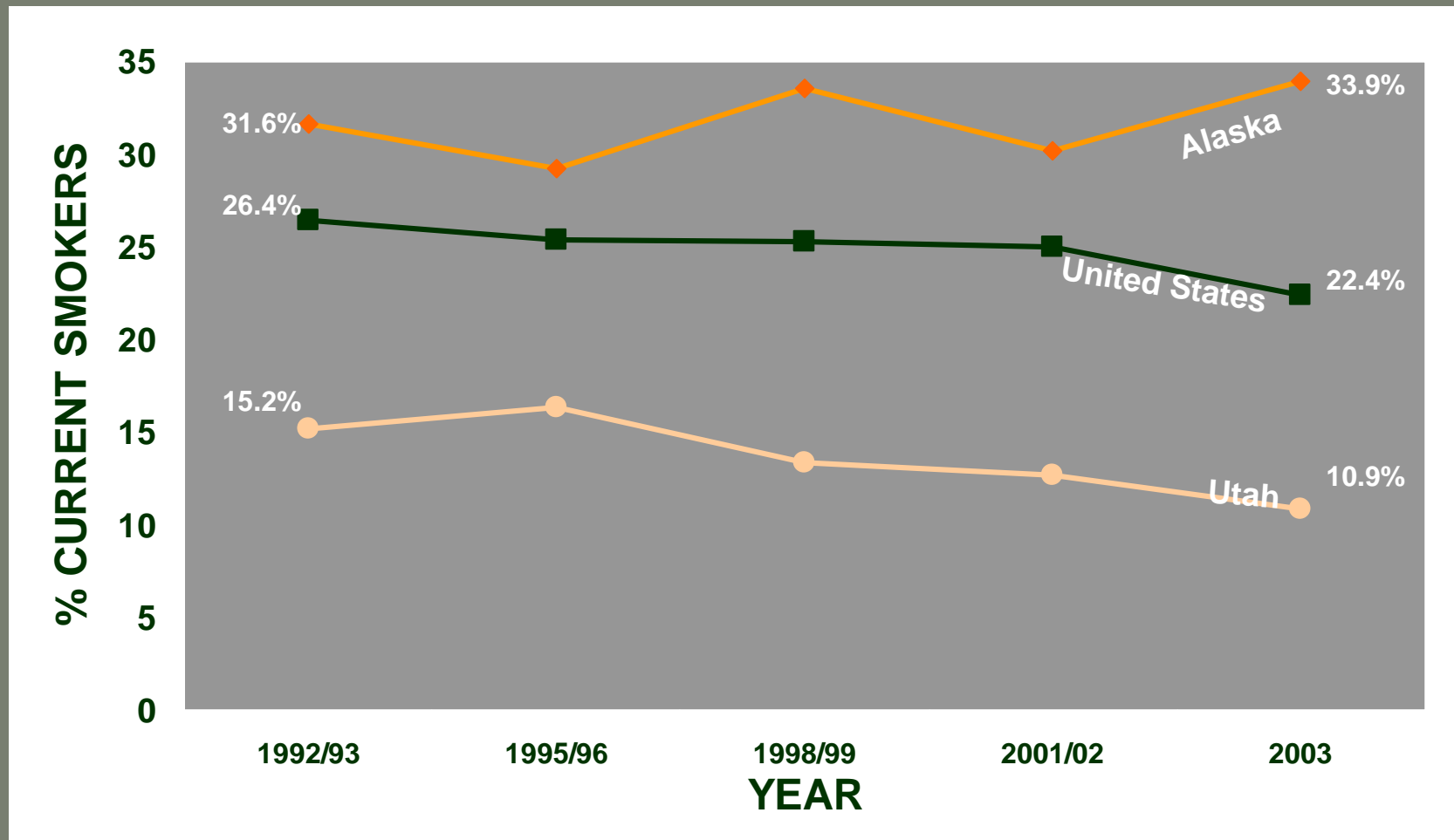
Uniqueness of 2003 TUSCS-CPS

- Panel design of CPS provides partial sample overlap for the Feb 2003 TUSCS with Feb 2002 TUS
 - Limited longitudinal analysis 2001-2003
 - 23,000 respondents
- Special cessation oriented topics
- Translated into Mandarin, Cantonese, Vietnamese, and Korean as well as Spanish (For more info: <http://riskfactor.cancer.gov/studies/tus-cps/translation/>)
- Data for subsets of sample can be linked with 2003 American Time Use Supplement to CPS

Unique Topics on 2003 TUSCS-CPS

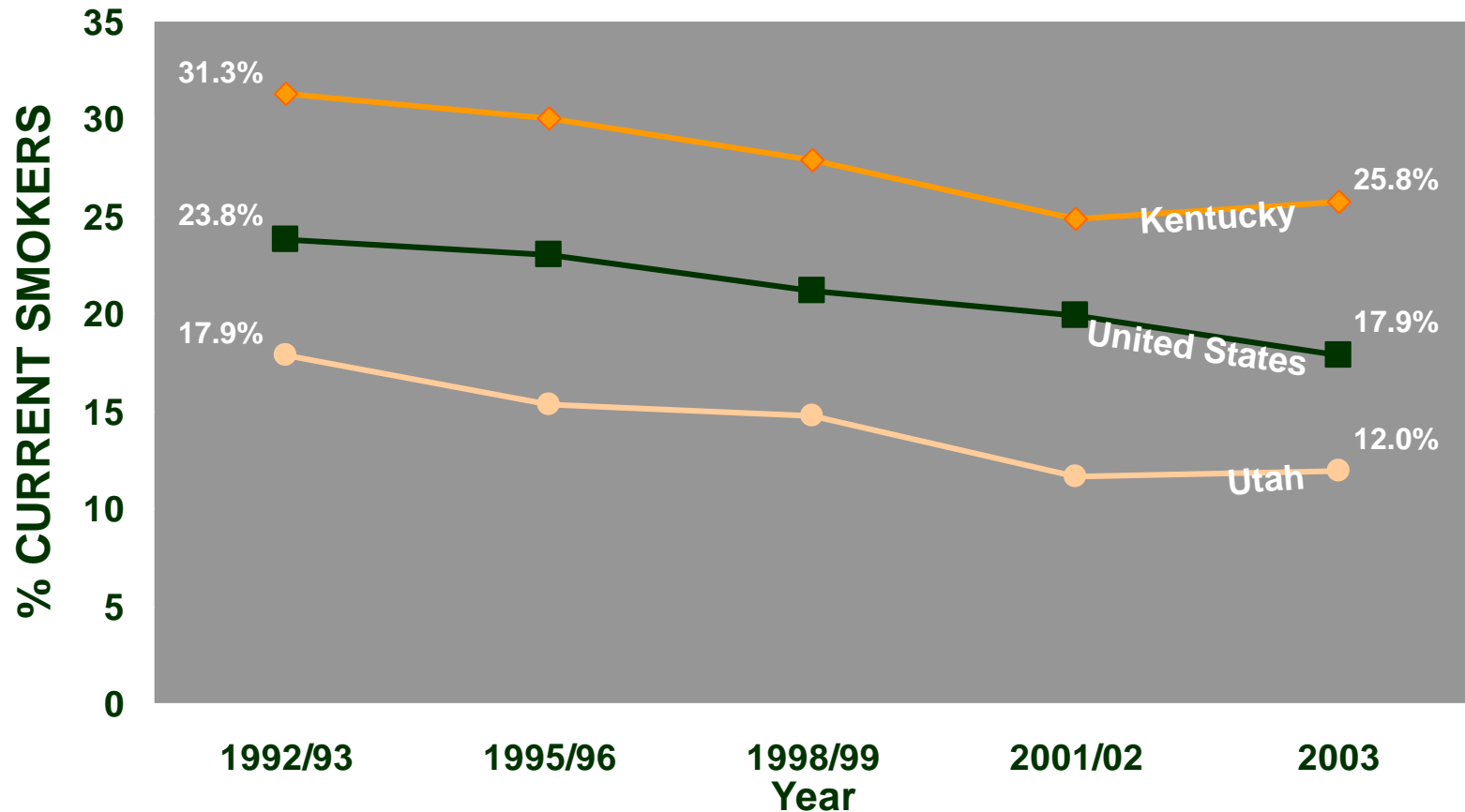
- Type of cigarette usually smoked (menthol; lights)
- Switching to lighter cigarettes
- Level of nicotine dependence
- Products, treatments & methods used to quit cigarette and /or other tobacco product use *(including use of a quit line)*
- Cessation behavior for “other” non-cigarette tobacco products
- Use of new harm reduction products *(PREPS)*
- Specific guidance from health professionals
- Cost of last pack/carton of cigarettes purchased & in which state

Trends in Cigarette Smoking Among Persons 18-29 Years Old United States, Utah, and Alaska (1992/93 to 2003)



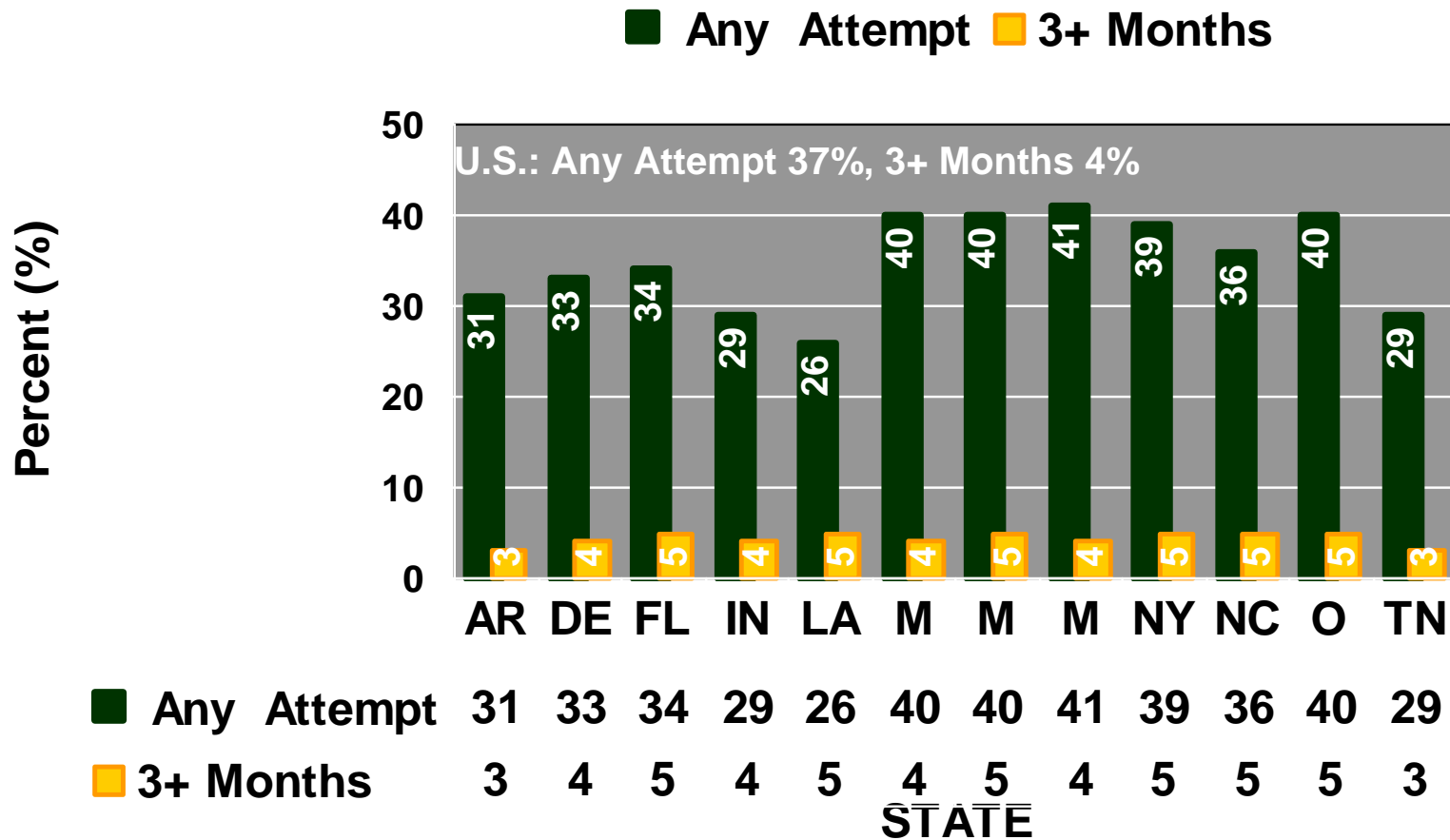
Note: Trends for states with the highest and lowest estimates in 2003 for persons 18-29 years old are shown

Trends in Cigarette Smoking Among Persons ≥ 30 Years Old United States, Utah, and Kentucky (1992/93 to 2003)



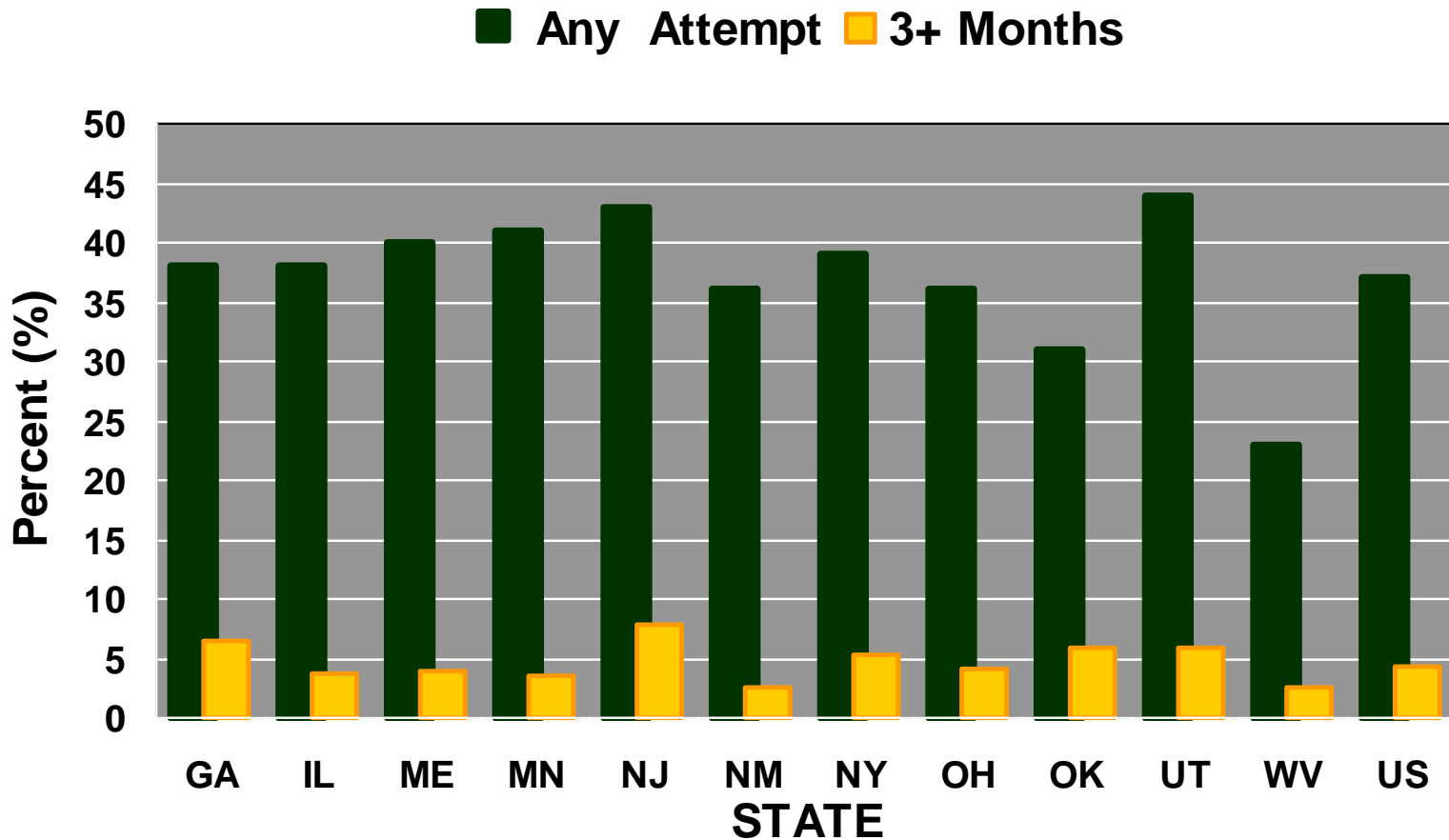
Note: Trends for states with highest and lowest estimates in 2003 for persons ≥ 30 years old are shown

Any Cessation Attempt vs. Cessation for 3 Months or Longer United States, Other States (2003)



Note: Percentages are among persons who were daily smokers 12 months ago; who were ≥ 25 years old at time of survey.

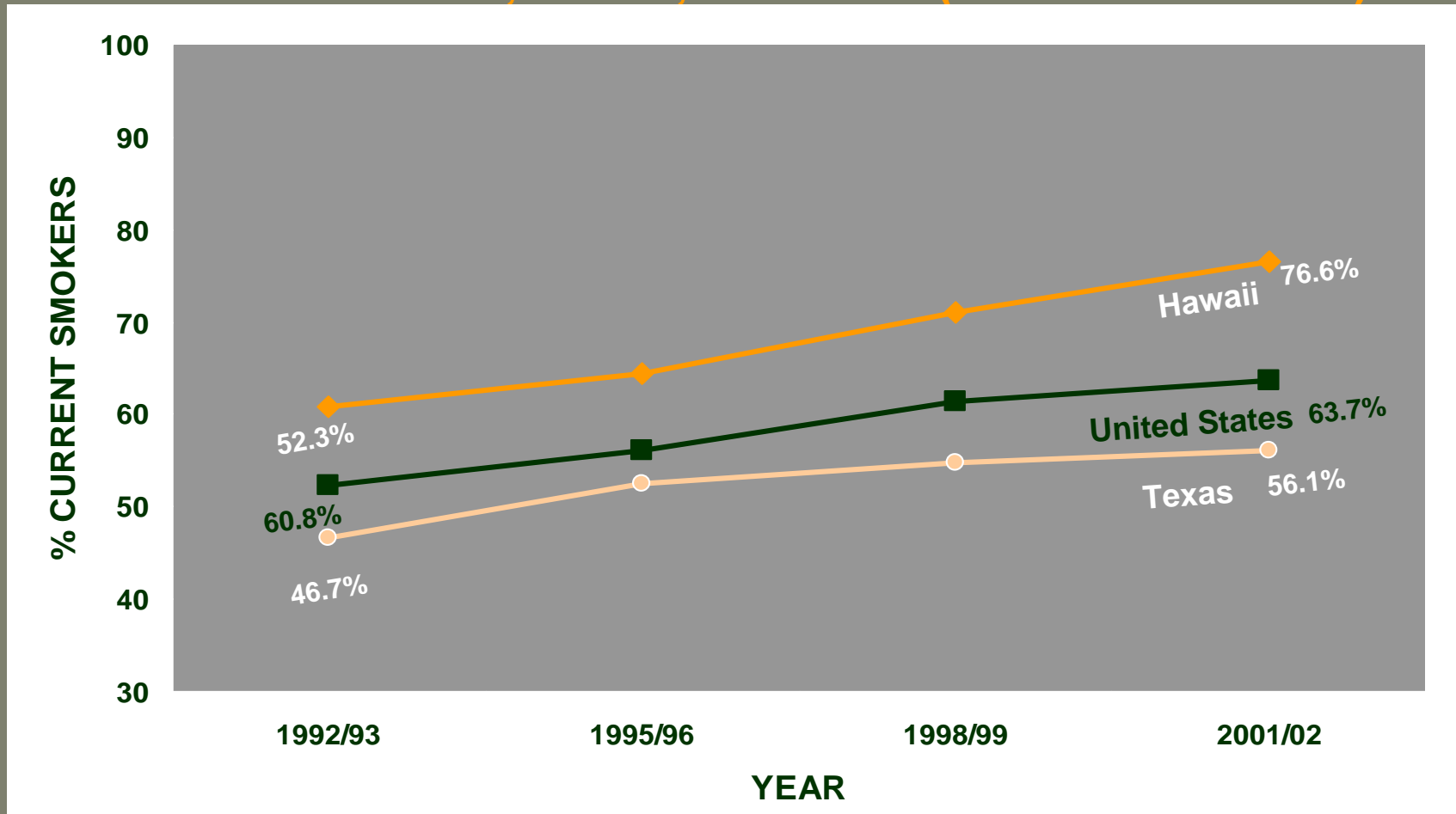
Any Cessation Attempt vs. Cessation for 3 Months or Longer United States, Other States (2003)



Note: Percentages are among persons who were daily smokers 12 months ago; who were ≥ 25 years old at time of survey.

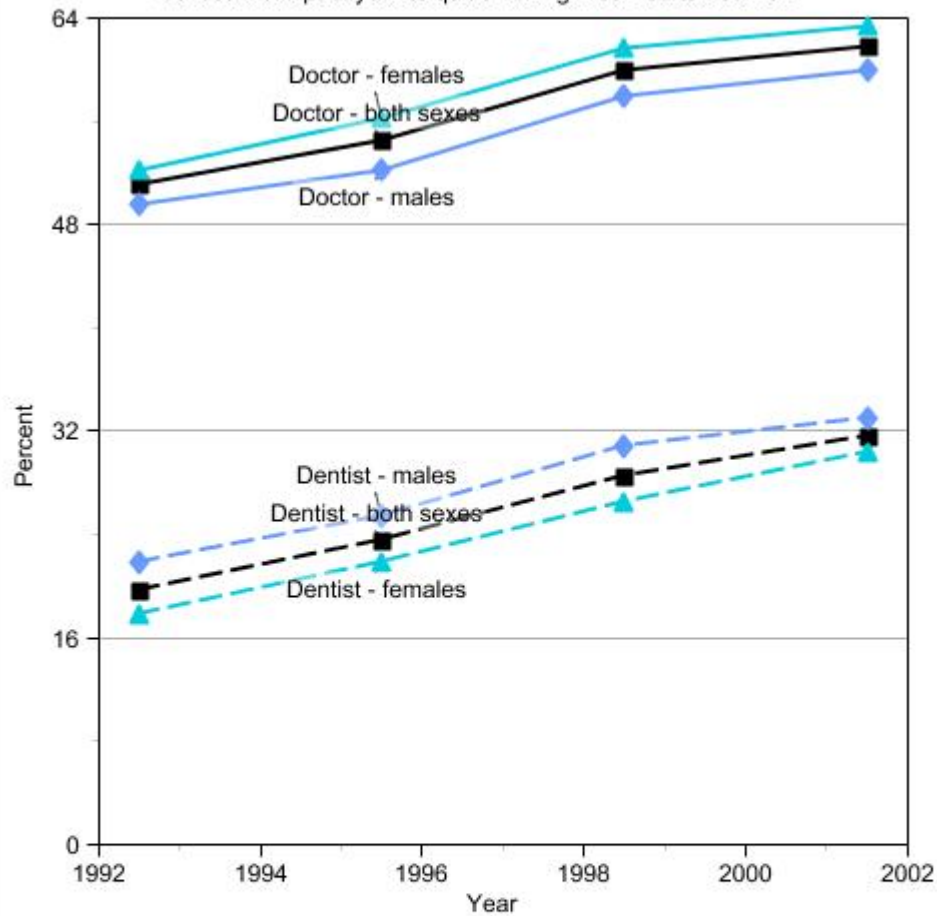
Trends in the Percentage of Smokers ≥ 30 Years Old who Received Advice to Quit from a Physician During the Previous Year

United States, Hawaii, and Texas (1992/93 to 2001/02)



Note: Percentages are among current smokers who visited a physician during the previous year. Trends for states with highest and lowest estimates in 2001/2002.

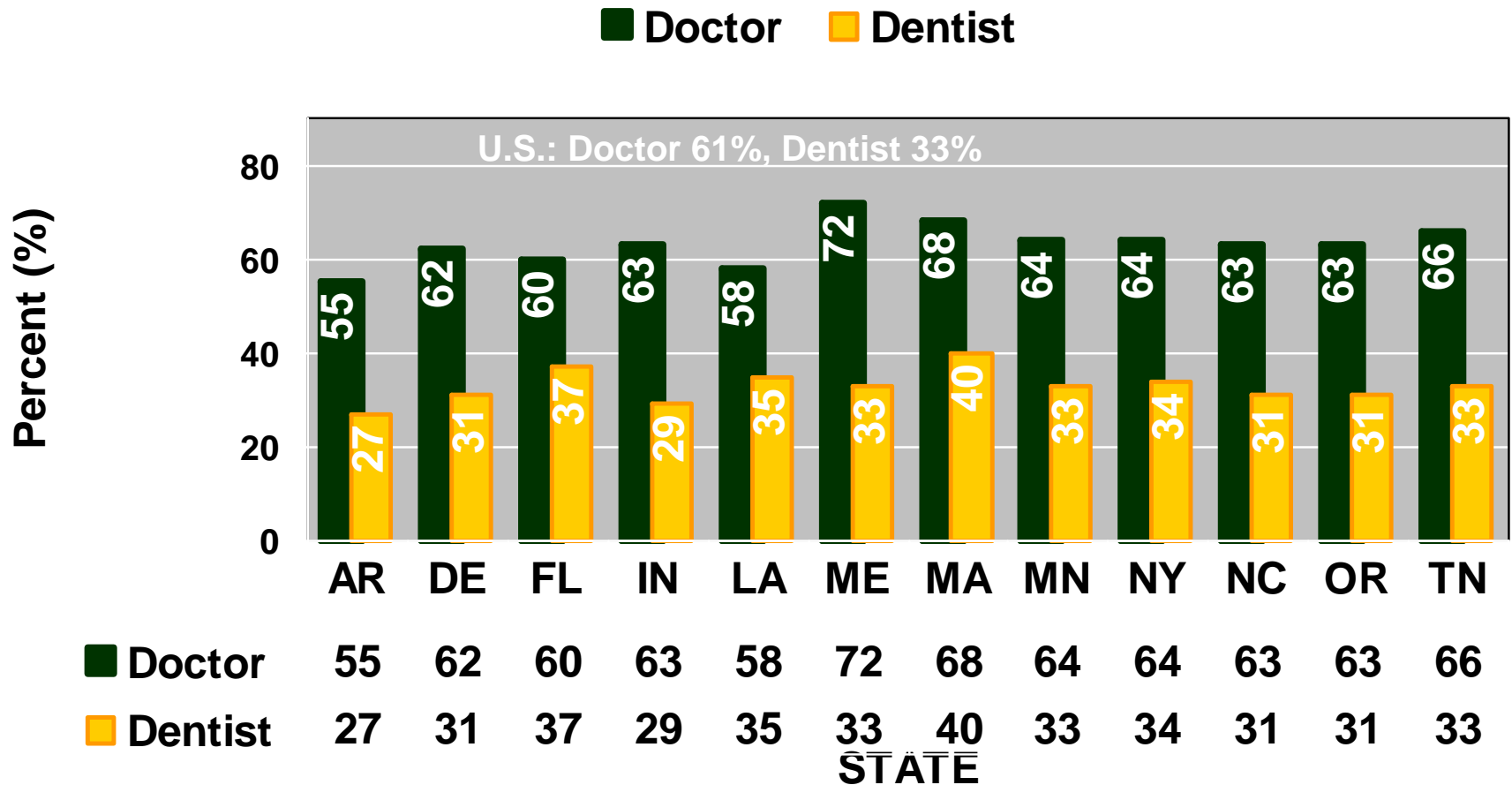
Figure P3. Percent of current smokers ages 18 and older who were advised by a doctor or dentist in the past year to quit smoking: 1992-93 to 2001-02



Source: Tobacco Use Supplement to the Current Population Survey, sponsored by the National Cancer Institute. \ Data are not age-adjusted.

Percentage Advised by Medical Doctors/Dentists to Quit Smoking

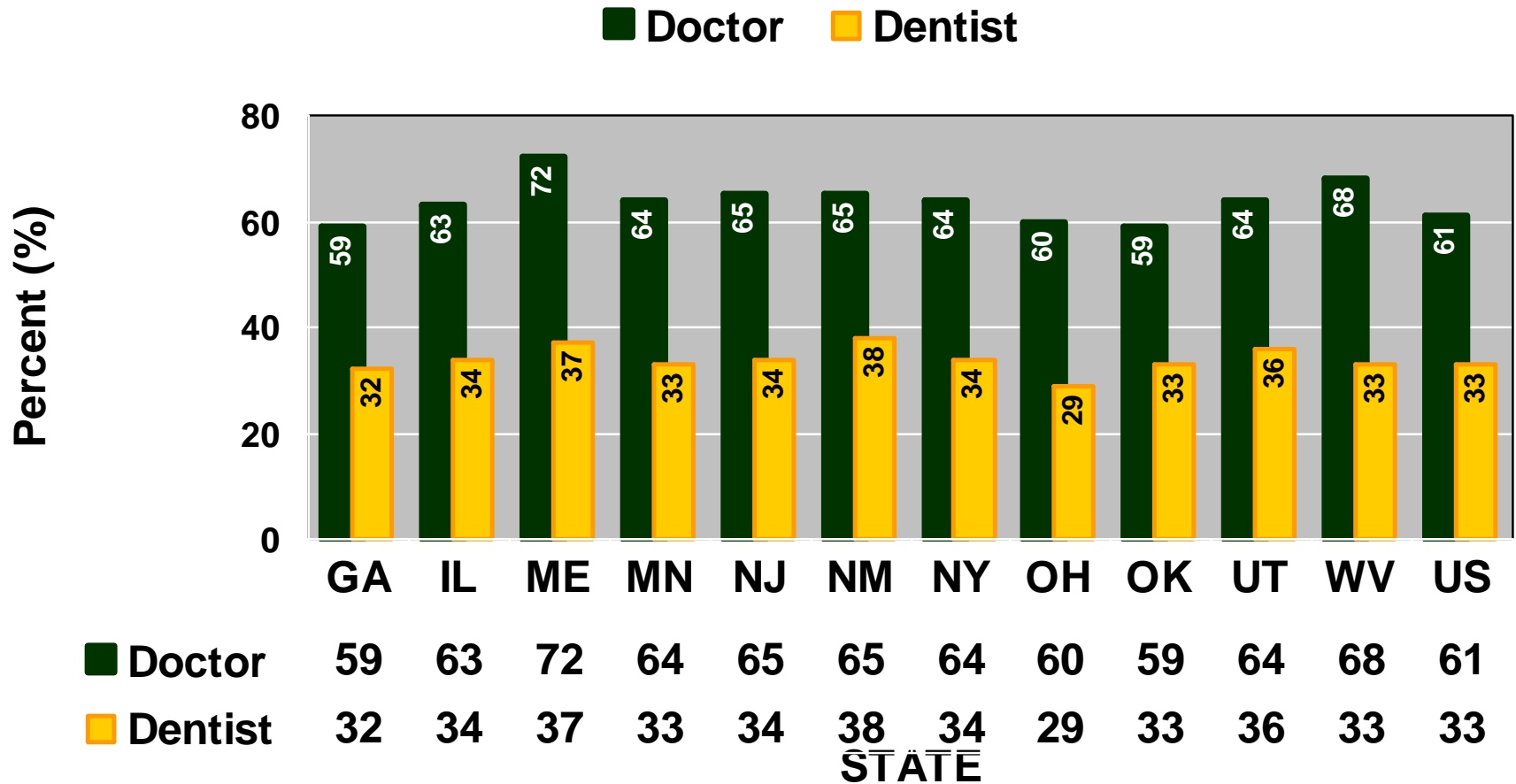
United States, Other States (2001-2002)



Note: Percentages are among current smokers who visited a medical doctor/dentist during the previous year.

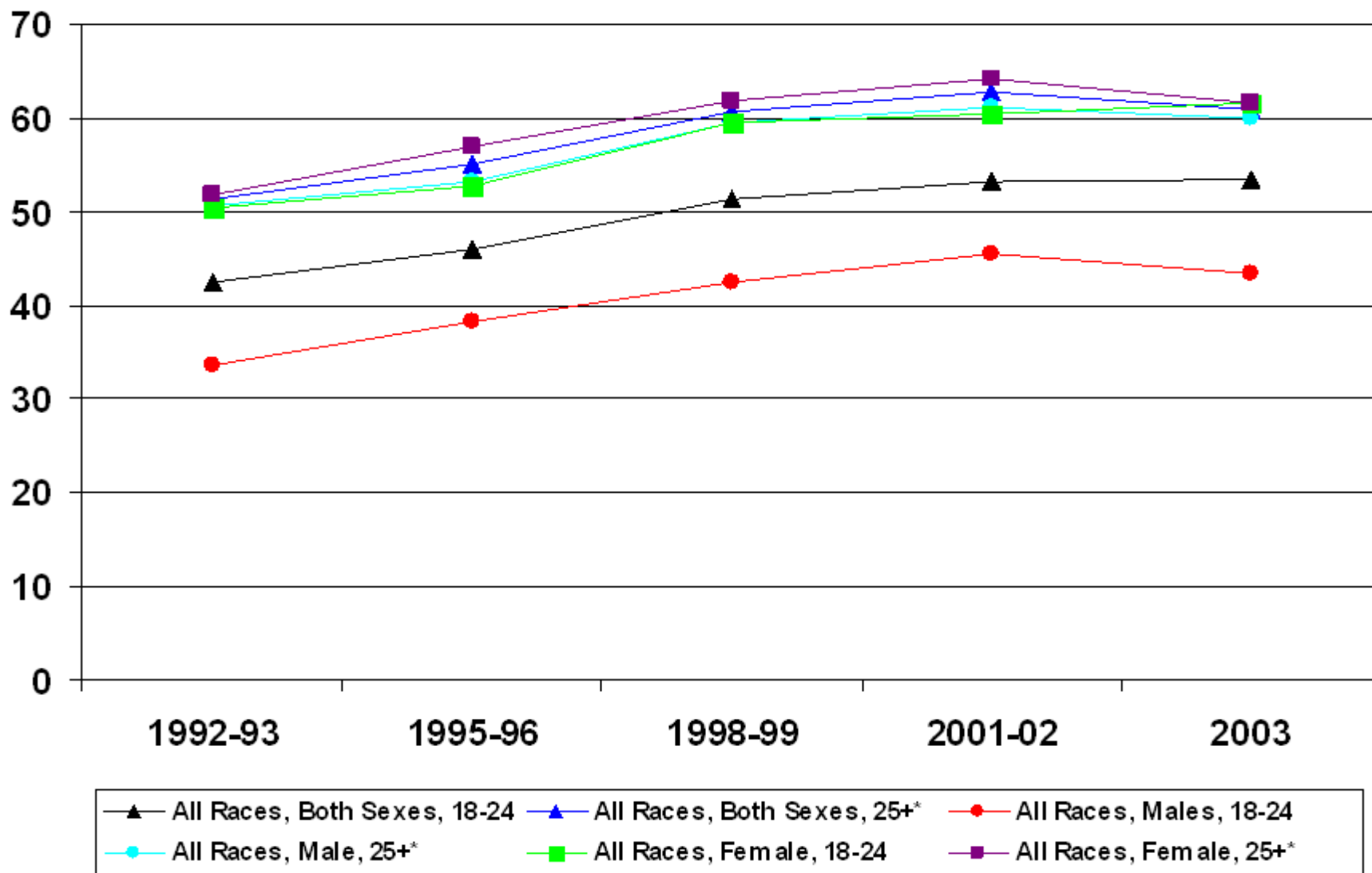
Percentage Advised by Medical Doctors/Dentists to Quit Smoking

United States, Other States (2001-2002)



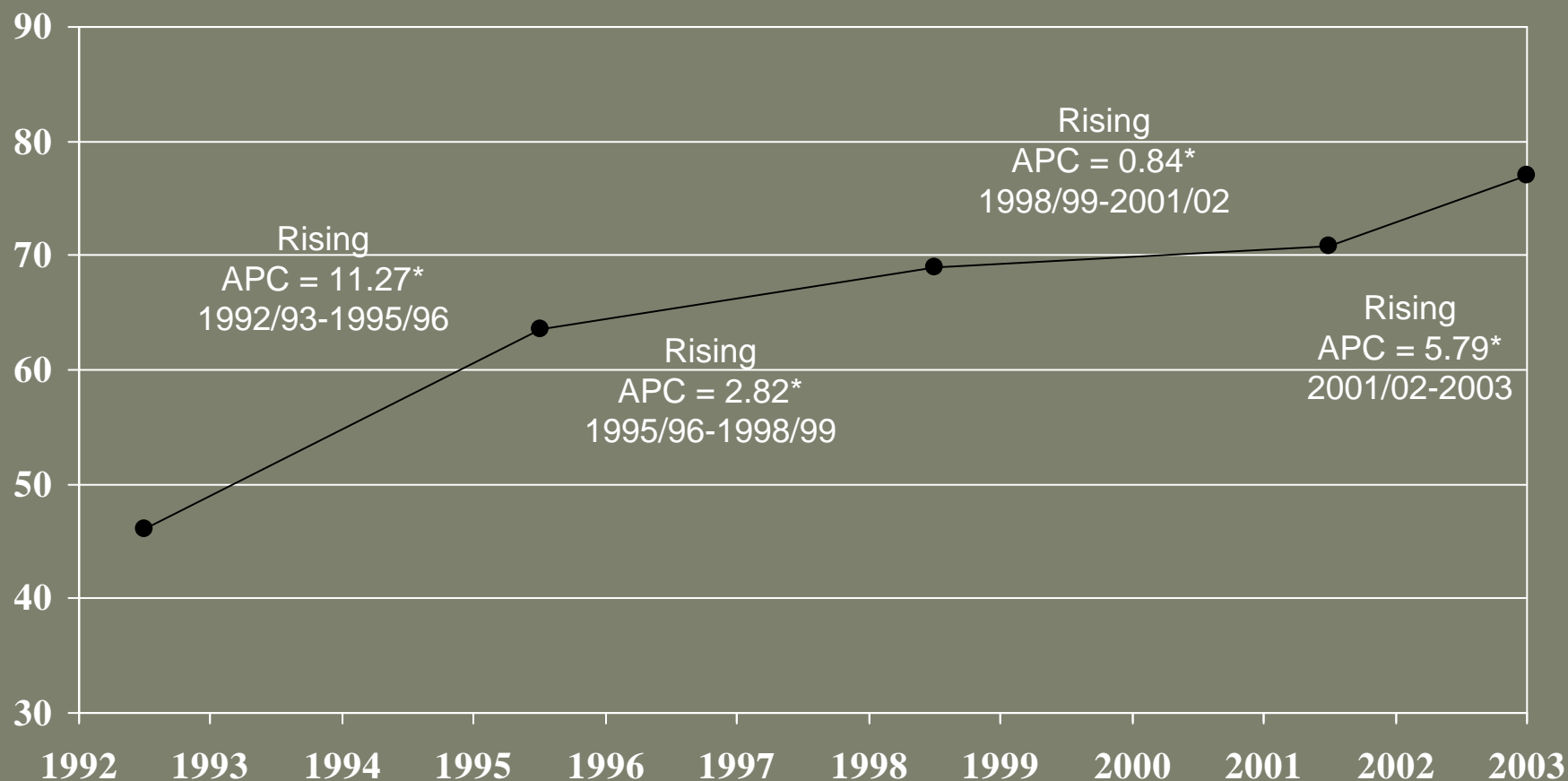
Note: Percentages are among current smokers who visited a medical doctor/dentist during the previous year.

Current Smokers Who Have Seen a Health Professional in the Past Year Percent Advised to Stop Smoking



* Age-adjusted, Age groups: 25-34, 35-44, 45-64, 65+

Figure P7a-1: Percent of Workers (Ages 18+) Reporting a Smoke-Free Work Environment, Both Sexes – 1992/1993, 1995/1996, 1998/1999, 2001/2002, and 2003



HP 2010 Goal 27-12: Increase the proportion of worksites with formal smoking policies that prohibit smoking to 100%.

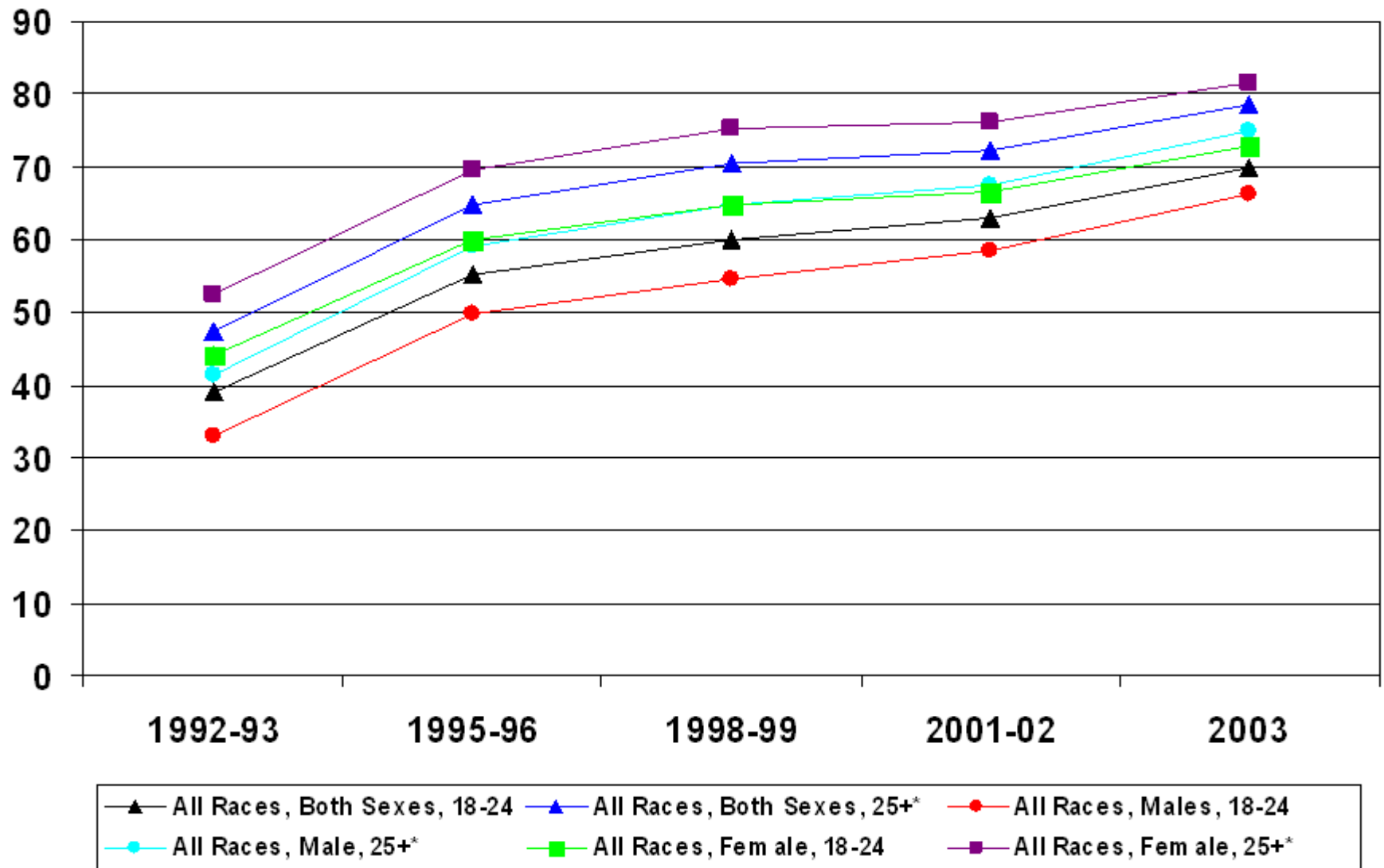
Source: Tobacco Use Supplement to the Current Population Survey, sponsored by the National Cancer Institute.

Data are not age-adjusted.

Trend lines connect sequential data points. Statistical significance of difference between sequential points was determined using a two-sample test incorporating the standard errors of the estimates.

* The Annual Percent Change (APC) is statistically significant.

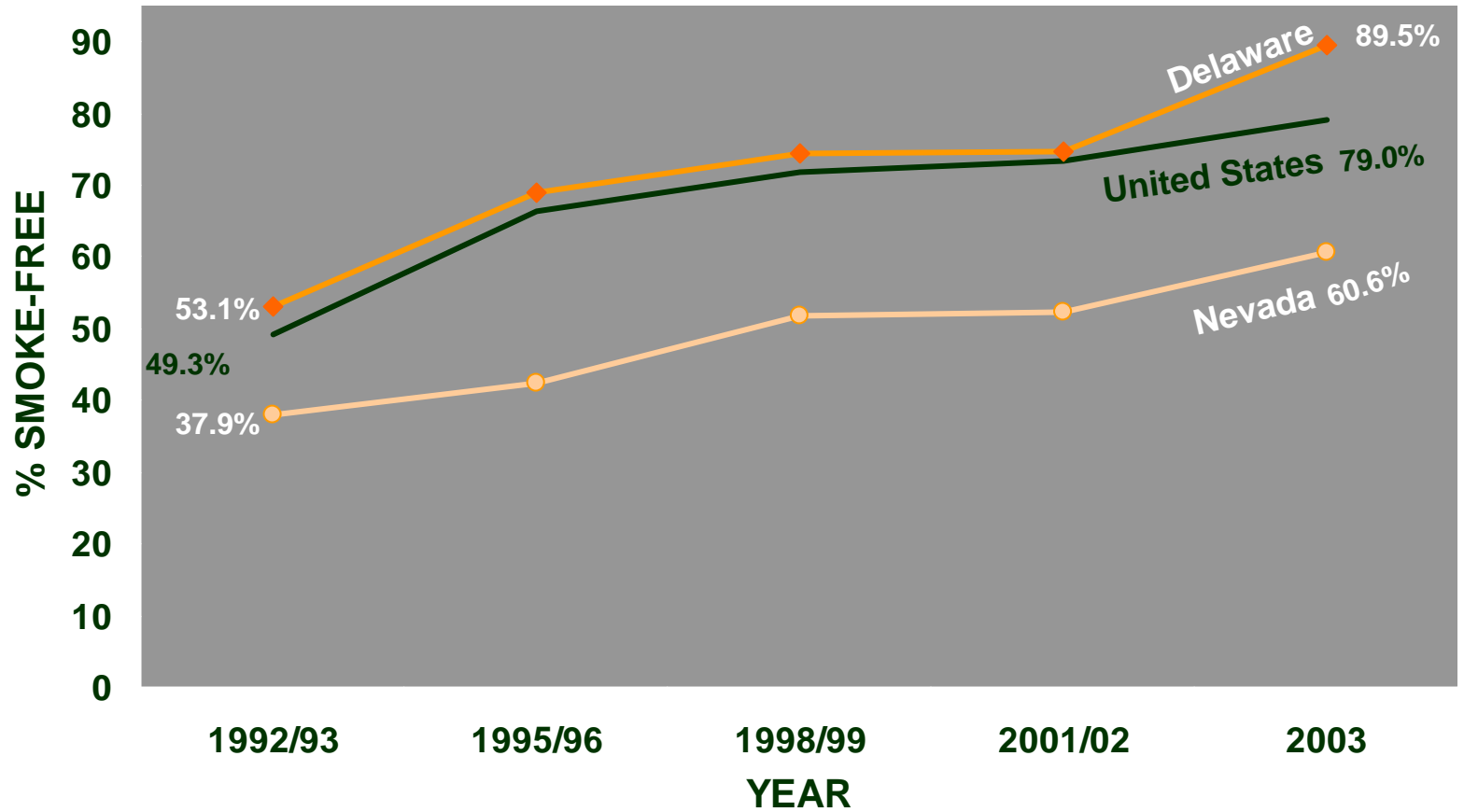
Percent with a Smoking Ban at Work



* Age-adjusted, Age groups: 25-34, 35-44, 45-64, 65+

Trends in the Percentage of Nonsmokers Who Work in a Smoke-free Work Place

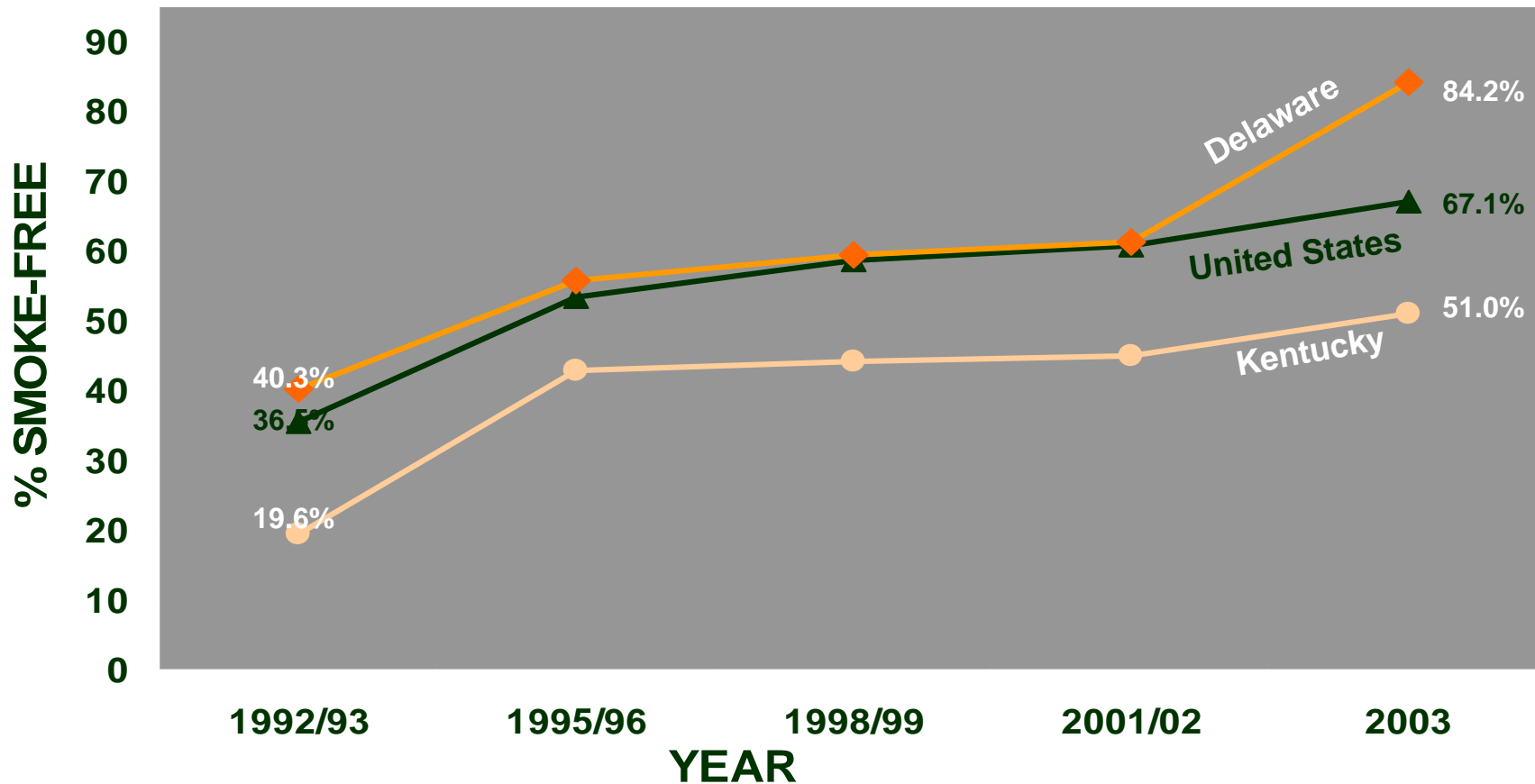
United States, Delaware, and Nevada (1992/93 to 2003)



Note: Trends for states with highest and lowest estimates in 2003 for non-smokers are shown. A work place is considered smoke-free if smoking is not allowed in any indoor areas.

Trends in the Percentage of Smokers Who Work in a Smoke-free Work Place

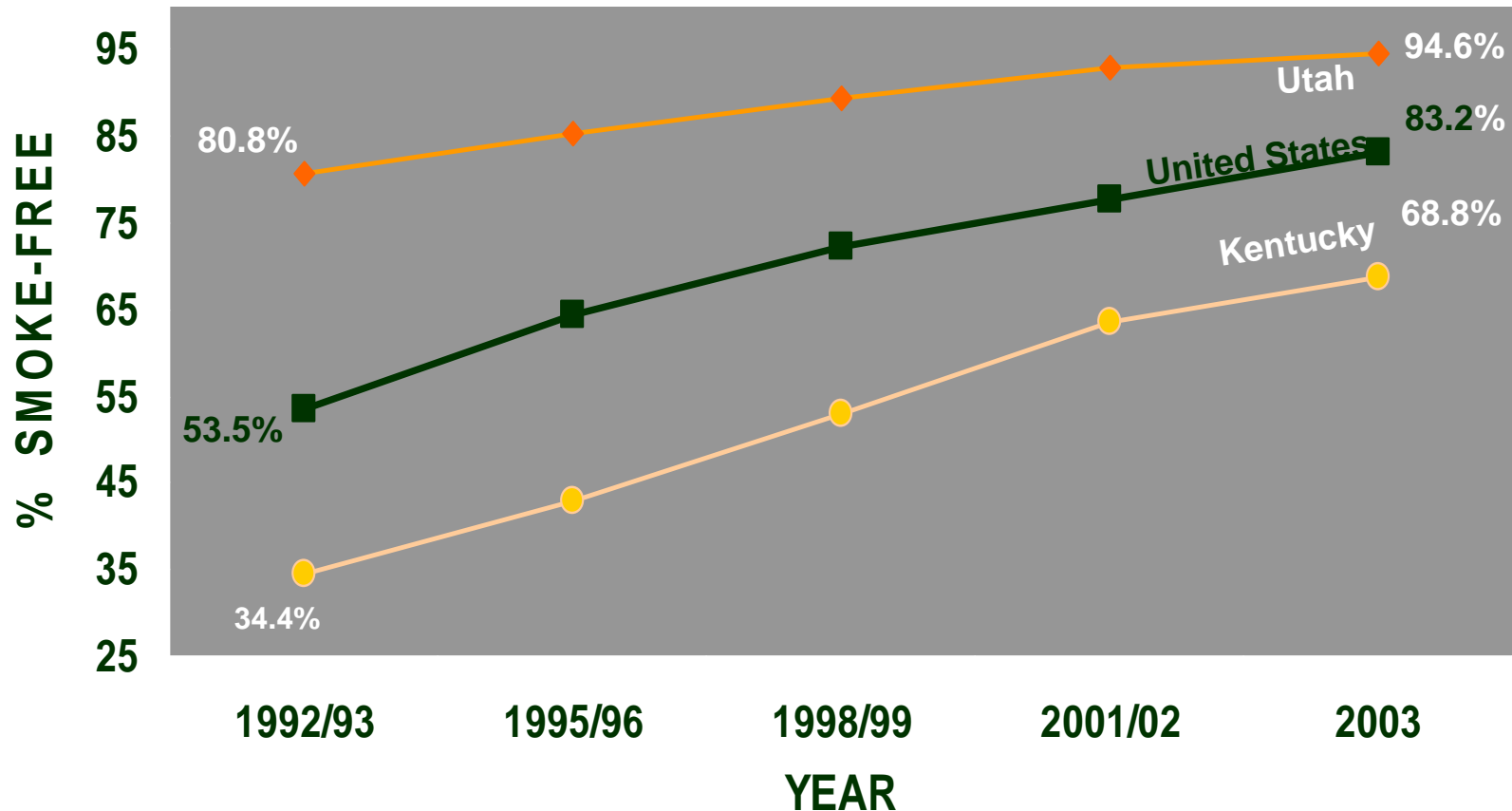
United States, Delaware, and Kentucky (1992/93 to 2003)



Note: Trends for states with highest and lowest estimates in 2003 for smokers are shown. A work place is considered smoke-free if smoking is not allowed in any indoor areas.

Trends in the Percentage of Nonsmokers Living in a Smoke-free Home

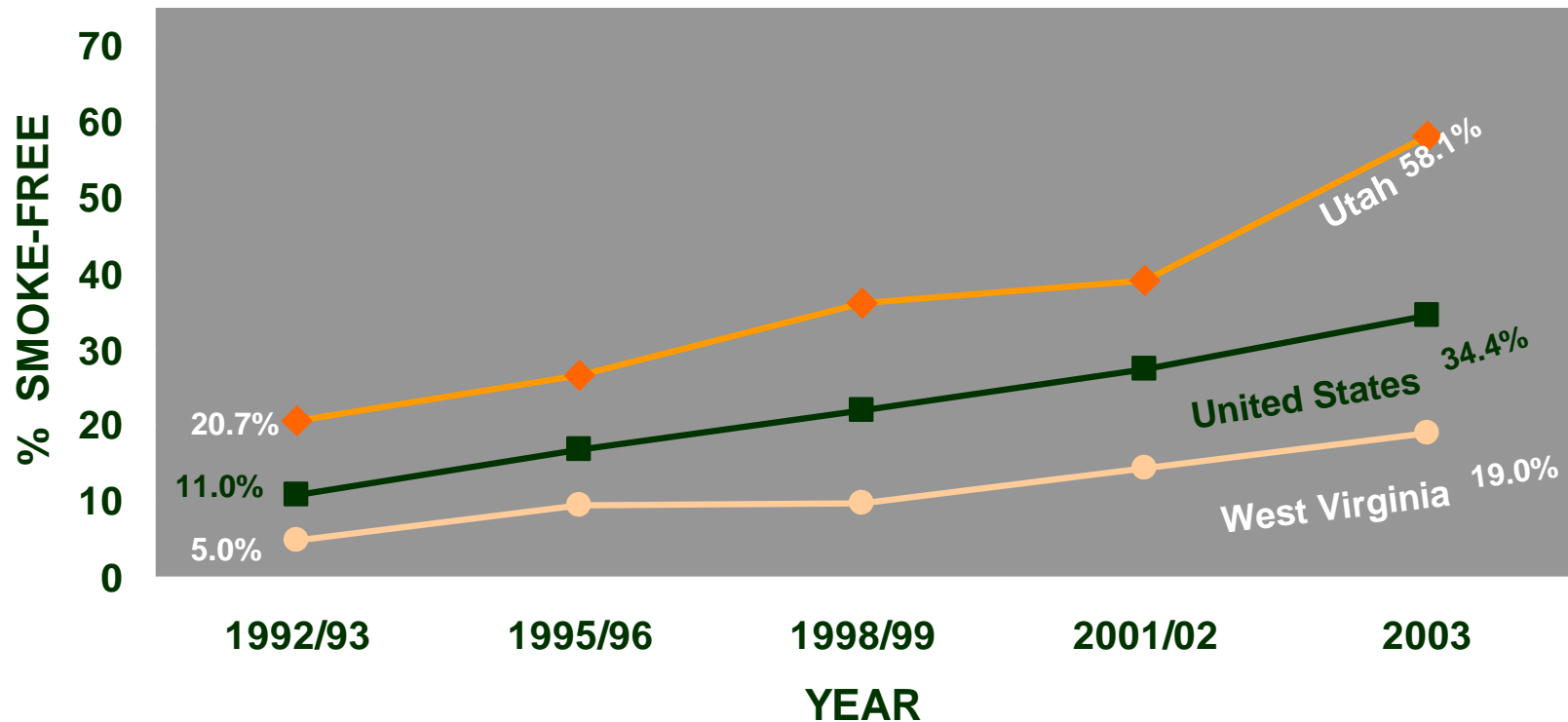
United States, Utah, and Kentucky (1992/93 to 2003)



Note: Trends for states with highest and lowest estimates in 2003 for nonsmokers are shown. Homes are considered smoke-free if no one is allowed to smoke anywhere inside the home.

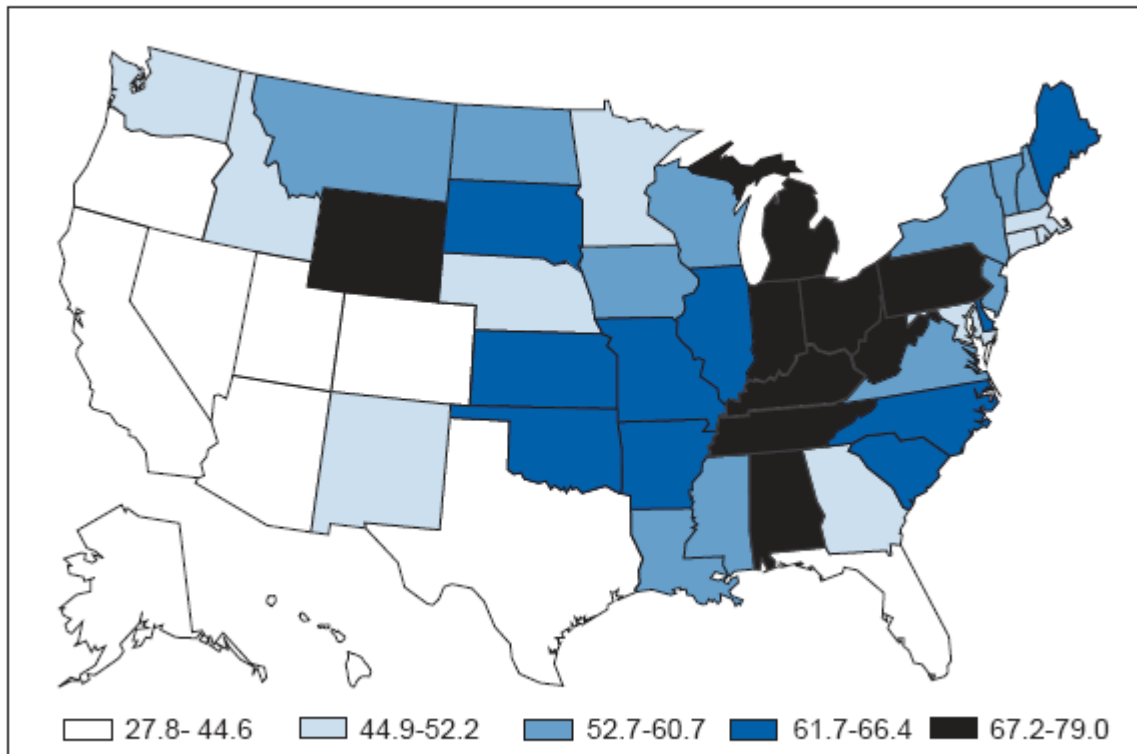
Trends in the Percentage of Smokers Living in a Smoke-free Home

United States, Utah, and West Virginia (1992/93 to 2003)



Note: Trends for states with highest and lowest estimates in 2003 for smokers are shown. Homes are considered smoke-free if no one is allowed to smoke anywhere inside the home.

Percent of Households With Potential Secondhand Smoke Exposure — United States, 2003*

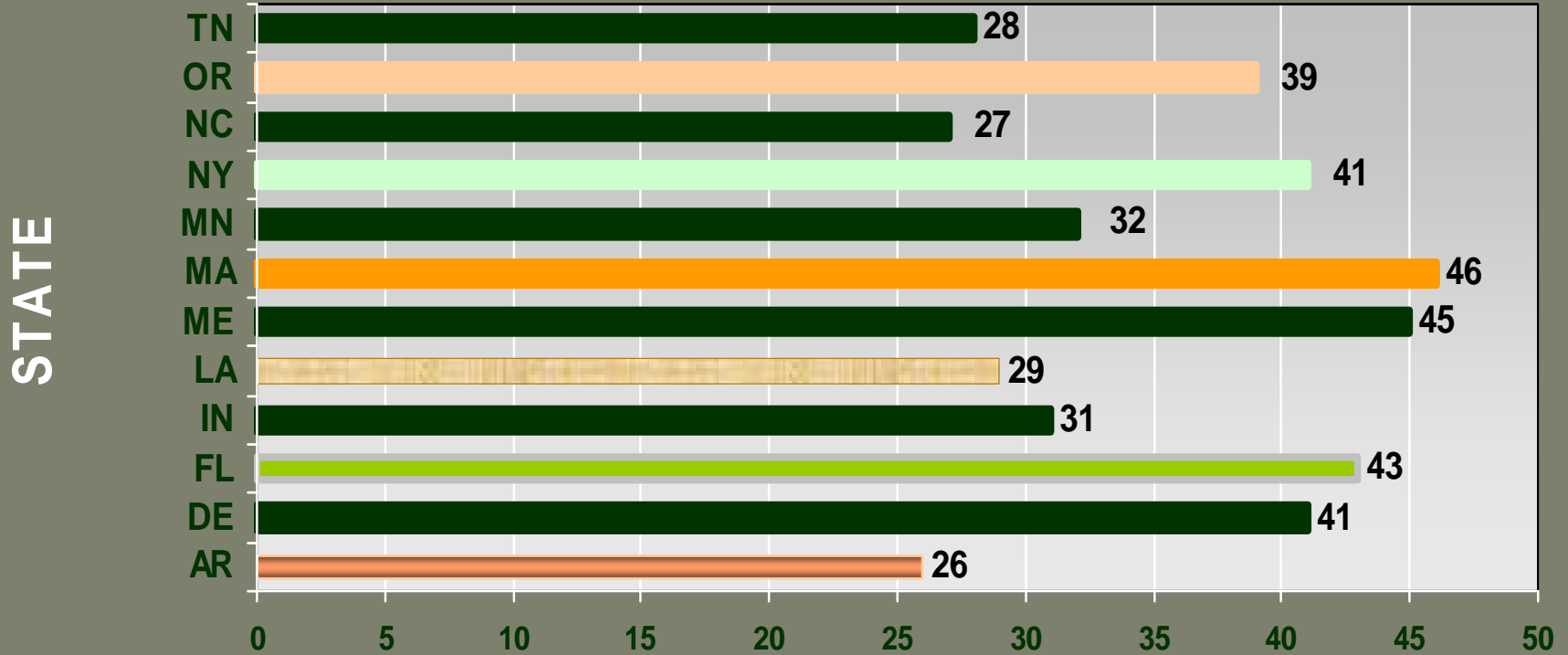


* Households with a current smoker and at least one child under age 18

Percentage Who Think Bars Should be Smoke-Free

United States, Other States (2003)

US: 38%

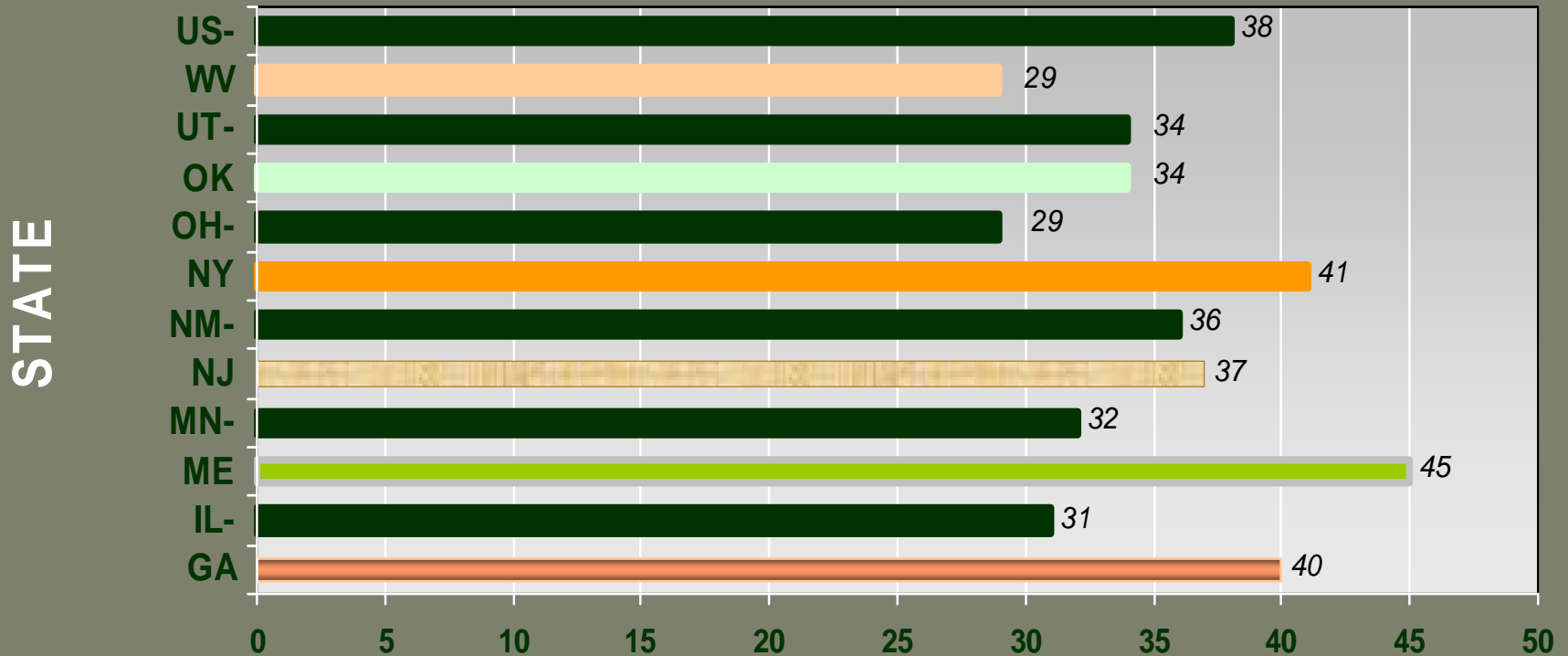


	AR	DE	FL	IN	LA	ME	MA	MN	NY	NC	OR	TN
Bar 1	26	41	43	31	29	45	46	32	41	27	39	28

% Favoring Smoke-Free

Percentage Who Think Bars Should be Smoke-Free

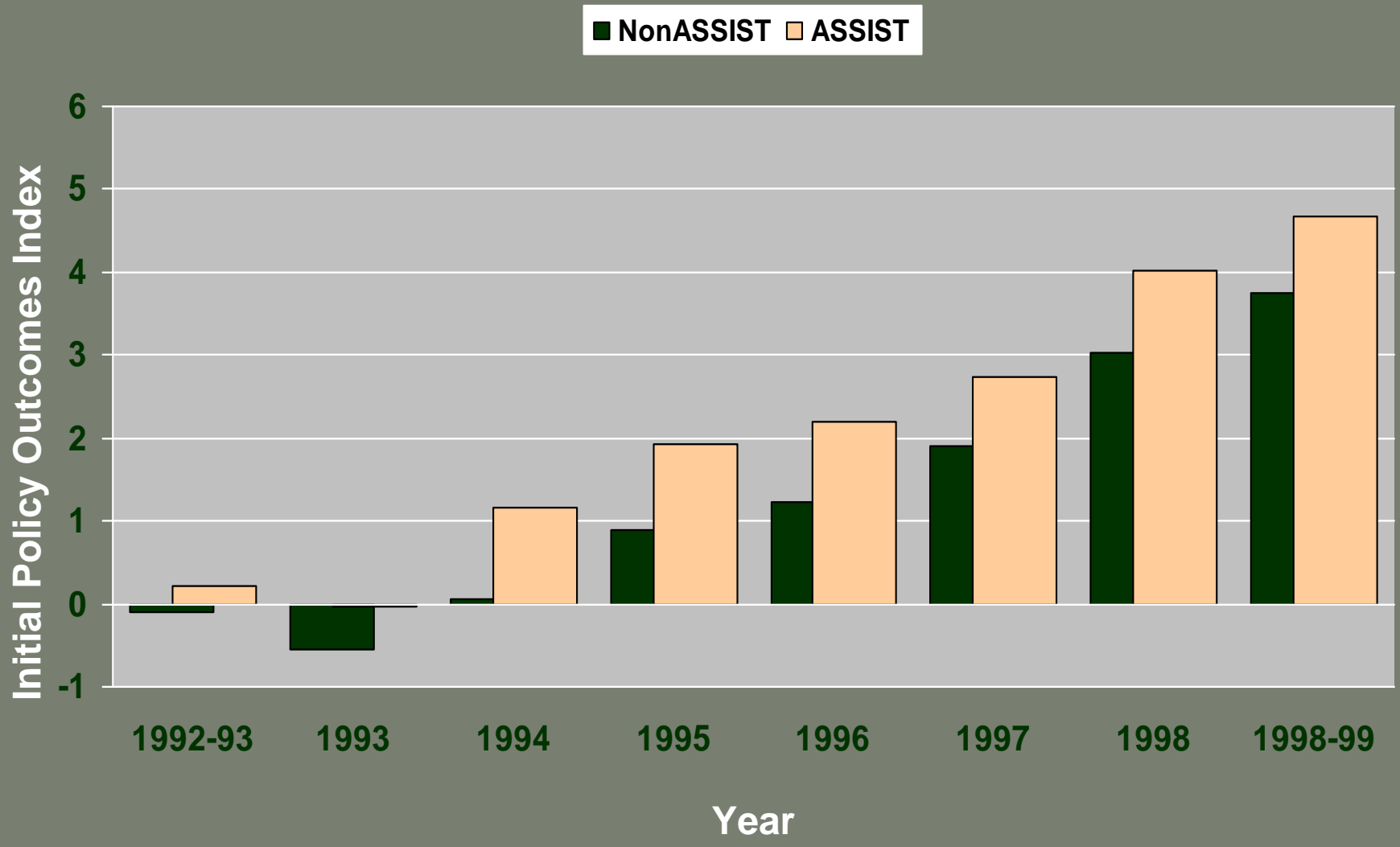
United States, Other States (2003)



	GA	IL-	ME	MN-	NJ	NM-	NY	OH-	OK	UT-	WV	US-
Bar 1	40	31	45	32	37	36	41	29	34	34	29	38

% Favoring Smoke-Free

Initial Policy Outcomes Index Averaged over ASSIST/Non-ASSIST States



2003 TUSCS-CPS

Percentage (95% Confidence Intervals) by Unique Topic

Topic	Total % (CI)	Male(%) (CI)	Female (%) (CI)
Menthol Cigarette Use	26.7 (26.1-27.3)	22.7 (21.9-23.5)	31.4 (30.6-32.2)
Light, Mild and Ultra Light Cigarette Use	53 (52.3-53.7)	45.1 (44.2-46.0)	62.2 (61.4-63.0)
First Cigarette Within 30 Minutes	61.4 (60.6-62.1)	63.1 (62.0-64.3)	59.3 (58.3-60.4)
NRT Use	25.9 (24.8-27.1)	25.0 (23.3-26.8)	26.9 (25.6-28.2)
Health Professional Advice to Quit	59.6 (58.9-60.4)	57.3 (56.3-58.4)	61.7 (60.8-62.7)
In Bars and Cocktail Lounges, Smoking Should Not Be Allowed At All	37.5 (37.2-37.9)	33.5 (33.1-34.0)	41.2 (40.8-41.7)
Average Price Paid for Last Pack of Cigarettes	3.54 (3.53-3.56)	3.56 (3.54-3.58)	3.52 (3.50-3.55)



Risk Factor Monitoring and Methods

Cancer Control and Population Sciences

[Cancer Control and Population Sciences Home](#)

[Applied Research](#)

[Risk Factor Monitoring & Methods](#)

TUS-CPS:

[What is the TUS-CPS?](#)

[What topics are covered on the questionnaire?](#)

[How can the data be used?](#)

[Where can I get the data & questionnaire?](#)

[What are the current and past survey findings?](#)

[What are NCI's future plans?](#)

[Suggested Citation](#)

[Reports & Publications Using the TUS-CPS](#)

[New, Updated, and Modified Files](#)

[Print or view entire document \(excludes tables\)](#)

[TUS-CPS Fact Sheet \(PDF\)](#)

Translations:

[TUS-CPS Translations into Other Languages](#)

[Tools](#) [Surveys & Studies](#) [Areas of Research](#) [Publications](#) [About RFMMB](#)

TOBACCO USE SUPPLEMENT

Search:

GO

CURRENT POPULATION SURVEY

What Topics Are Covered on the TUS-CPS Questionnaire?

Although the TUS has changed slightly between 1992 and 2003, it has generally contained about 40 items covering:

- cigarette smoking prevalence,
- smoking history,
- current and past cigarette consumption,
- cigarette smoking quit attempts and intentions to quit,
- medical and dental advice to quit smoking,
- cigar, pipe, chewing tobacco, and snuff use,
- workplace smoking policies,
- smoking rules in the home,
- attitudes toward smoking in public places,
- opinions about the degree of youth access to tobacco in the community, and
- attitudes toward advertising and promotion of tobacco.

The 2000 questionnaire is an abbreviated version of the TUS-CPS and consists of several questions measuring basic tobacco use prevalence (cigarettes, cigars, pipes, chewing tobacco, and snuff).

In 2001-02, a Core TUS questionnaire was fielded, using mostly the same instrument as that administered in 1998-99. For a list of the few differences, see the footnotes to the [2001-02 questionnaire](#).



This page links to some files in [Portable Document Format \(PDF\)](#).

In 2003, a Special Topics questionnaire oriented toward tobacco cessation was fielded. The 2003 Tobacco Use Special Cessation Supplement (TUSCS-CPS) had several unique topics covering:

- type of cigarette usually smoked (menthol, lights);
- switching to lighter cigarettes;
- level of nicotine dependence;
- products, treatments and methods used to quit cigarette and/or other tobacco product use;
- cessation behavior for "other" non-cigarette tobacco products (cigars, pipes, chewing tobacco and snuff);
- use of new harm reduction products;
- specific guidance from health professionals; and
- cost of last pack/carton of cigarettes purchased and in which state purchased.

In May 2006, August 2006, and January 2007, a Core TUS was fielded that combined some of the new features of the 2003 TUSCS-CPS with the general 2001-02 TUS. Topics that had not previously been fielded included:

- cost and purchase of "single" cigarettes;
- smoking consumption about 12 months ago;
- awareness and use of "quitlines" and advising family & friends to quit smoking;
- use of "Marlboro Ultrasmooth", a new test-marketed tobacco product;
- asking about other non-cigarette tobacco products separately rather than combined; and
- asking about attitudes toward clean indoor air policies for children's outdoor sports fields and playgrounds, and indoor concert venues.

Race/Ethnicity changes in 2003 CPS: In 2003, significant changes were made to race/ethnicity questions in the CPS. Respondents were able to select more than one race when answering the survey. This change in wording does not impact smoking estimates and trends made for the entire nation from the TUSCS-CPS, but it could potentially impact smoking estimates and trends made by race/ethnicity. NCI has developed a method to construct single race-estimates using data from the post-2003 TUSCS-CPS. The method is useful when trends over time are being examined for single race groups using both pre-2003 and post-2003 data. More information is available in the [Bridging Estimates by Race report \(PDF\)](#), which describes the method and gives an initial assessment of the usefulness of the race adjustment.

Overlap sample for February 2002 TUS and February 2003 TUSCS: The panel design of the Basic CPS provides partial sample overlap between the general TUS-CPS answered in February 2002 and the TUSCS-CPS fielded in February 2003. This feature allows a limited longitudinal analysis (2002-2003) through linkage between the surveys. A two-year cohort (2001-2003) could be constructed for those interested in smoking cessation (smoking status) by also using reported retrospective information on smoking status 12 months previous to 2002. NCI, in collaboration with the Census Bureau, has developed a strategy to create new weights appropriate for analyzing only the overlap sample, and is working on making these weights available for public use. Further information about their development, proper use, and availability from NCI is available in the [Weighting the Overlap Sample report \(PDF\)](#).

[Cancer Control and Population Sciences Home](#)
[Applied Research](#)
[Risk Factor Monitoring & Methods](#)
TUS-CPS:
[What is the TUS-CPS?](#)
[What topics are covered on the questionnaire?](#)
[How can the data be used?](#)
[Where can I get the data & questionnaire?](#)
[What are the current and past survey findings?](#)
2003 Data
[2001-2002 Data](#)
[1998-1998 Data](#)
[What are NCI's future plans?](#)
[Suggested Citation](#)
[Reports & Publications Using the TUS-CPS](#)
[Print or view entire document \(excludes tables\)](#)

This page links to some files in [Portable Document Format \(PDF\)](#).

[Tools](#) [Surveys & Studies](#) [Areas of Research](#) [Publications](#) [About RFMMB](#)

TOBACCO USE SUPPLEMENT

CURRENT POPULATION SURVEY

 Search:

What Do the 2003 TUSCS Data Say about Tobacco Use?

The data tables listed here provide examples of the type of information that researchers can obtain from the TUSCS. They are based on analyses of the 2003 TUSCS-CPS data file. These tables are also provided in the PDF file [Representative Survey Findings](#).

Table 1: Smoking Status - Percentage Estimates (95% Confidence Intervals) of the US Household Population, 18 Years and Older.

Table 2: Home and Work Environments in which Smoking is Not Allowed - Percentage Estimates (95% Confidence Intervals) of the US Household Population, 18 Years and Older.

Table 3: Cigarette Smoking Quit Attempts and Cessation - Percentage Estimates (95% Confidence Intervals) of the US Household Population, 25 Years and Older.

Table 4: Use of Other (non-Cigarette) Tobacco Products - Percentage Estimates (95% Confidence Intervals) of the US Household Population, 18 Years and Older, by Cigarette Smoking Status and Gender.

Table 5: Various Unique Items in the TUSCS-CPS - Percentage and Mean Estimates (95% Confidence Intervals) of the US Household Population, 18 Years and Older.

When using these tables, please note that:

- Several Federal surveys are used to track tobacco usage in the US population, each with slightly different assessments. These tables are examples of analyses of the [2003 data file](#) that are available from the Census Bureau.
- Tables 1 through 5 contain simple parameter estimates (percentages and means), and measures of variance in the form of confidence intervals. These confidence intervals were estimated using replicate weights. Alternative estimates of variance and confidence intervals can be made for simple analyses using Attachment 16 of the [2003 Tobacco Use Special Cessation Supplement File \(PDF\)](#) of the US Census Bureau Technical Documentation. Replicate weights necessary for more complex analysis such as regression or analysis of variance are available from NCI.

Contents**TUS-CPS:**[What is the TUS-CPS?](#)[What topics are covered on the questionnaire?](#)[How can the data be used?](#)[Where can I get the data & questionnaire?](#)[What are the current and past survey findings?](#)[What are NCI's future plans?](#)**Suggested Citation**[Reports & Publications Using the TUS-CPS](#)[New, Updated, and Modified Files](#)[Print or view entire document \(excludes tables\)](#)[TUS-CPS Fact Sheet \(PDF\)](#)**Translations:**[TUS-CPS Translations into Other Languages](#)

This page links to some files in [Portable Document Format \(PDF\)](#).

Suggested Citation for the TUS-CPS

Use of data from the NCI sponsored Tobacco Use Supplement to the Current Population Survey (TUS-CPS) for publication purposes should contain a citation. Suggested citations for the data and/or technical documentation are:

For 2000 or earlier data, use:

US Department of Commerce, Census Bureau (year of data release). National Cancer Institute Sponsored Tobacco Use Supplement to the Current Population Survey (years of survey): <http://riskfactor.cancer.gov/studies/tus-cps/>. Data files (AND/OR) technical documentation (technical documentation website: provide link).

For example, the citation for use of the 1998-1999 Tobacco Use Supplement to the CPS would be:

US Department of Commerce, Census Bureau (2001). National Cancer Institute Sponsored Tobacco Use Supplement to the Current Population Survey (1998-1999): <http://riskfactor.cancer.gov/studies/tus-cps/>. Data files (AND/OR) technical documentation (technical documentation website: <http://www.census.gov/aprd/techdoc/cps/cpsmay99.pdf>).

For the 2001-2002 data, use:

US Department of Commerce, Census Bureau (2004). National Cancer Institute and Centers for Disease Control and Prevention Co-sponsored Tobacco Use Supplement to the Current Population Survey (2001-2002): <http://riskfactor.cancer.gov/studies/tus-cps/>. Data files (AND/OR) technical documentation (technical documentation website: <http://www.census.gov/aprd/techdoc/cps/cpsJun01Nov01Feb02.pdf>).

For the 2003 data, use:

US Department of Commerce, Census Bureau (2006). National Cancer Institute and Centers for Disease Control and Prevention Co-sponsored Tobacco Use Special Cessation Supplement to the Current Population Survey (2003): <http://riskfactor.cancer.gov/studies/tus-cps/>. Data files (AND/OR) technical documentation (technical documentation website: <http://riskfactor.cancer.gov/studies/tus-cps/info.html>).



National Cancer Institute

U.S. National Institutes of Health | www.cancer.gov

Risk Factor Monitoring and Methods

Cancer Control and Population Sciences

[Cancer Control and Population Sciences Home](#)
[Applied Research](#)
[Risk Factor Monitoring & Methods](#)
TUS-CPS:
[What is the TUS-CPS?](#)
[What topics are covered on the questionnaire?](#)
[How can the data be used?](#)
[Where can I get the data & questionnaire?](#)
[What are the current and past survey findings?](#)
[What are NCI's future plans?](#)
[Suggested Citation](#)
[Reports & Publications Using the TUS-CPS](#)
New, Updated, and Modified Files
[Print or view entire document \(excludes tables\)](#)
[TUS-CPS Fact Sheet \(PDF\)](#)
Translations:
[TUS-CPS Translations into Other Languages](#)

This page links to some files in

[Tools](#) | [Surveys & Studies](#) | [Areas of Research](#) | [Publications](#) | [About RFMMB](#)

TOBACCO USE SUPPLEMENT

CURRENT POPULATION SURVEY

Search:

GO

New, Updated, and Modified Files

Date	Type of Change	Description of Change
October 2007	New	The Weighting the Overlap Sample report (PDF) became available.
October 2007	Modified	Revised the technical documentation for the 2003 TUSCS-CPS (PDF) to reflect revisions to the Source & Accuracy Statement and to the skip pattern for questions F4 and F5.
June 2007	New	The 2006 TUS-CPS questionnaire became available.
January 2007	Modified	Data for question PEH10b is stored in a different order than the order in which the question was asked. This question was edited in the 2003 TUS-CPS Technical Documentation to reflect the order of data storage. A user note indicating the change was added to Attachment 17 of the document.
October 2006	Modified	The race categories used in the 2003 survey findings tables were changed.
June 2006	Modified	The variable number for question PEC6d2, and the edited universe for question PED1, which had been listed incorrectly in the 2003 TUS-CPS Technical Documentation (PDF) , were corrected.
June 2006	New	Data for the 2003 TUS-CPS became available.

[Cancer Control and Population Sciences Home](#)

[Applied Research](#)

[Risk Factor Monitoring & Methods](#)

TUS-CPS:

[What is the TUS-CPS?](#)

[What topics are covered on the questionnaire?](#)

[How can the data be used?](#)

Where can I get the data & questionnaire?

[What are the current and past survey findings?](#)

[What are NCI's future plans?](#)

[Suggested Citation](#)

[Reports & Publications Using the TUS-CPS](#)

[New, Updated, and Modified Files](#)

[Print or view entire document \(excludes tables\)](#)

[TUS-CPS Fact Sheet \(PDF\)](#)

Translations:

[TUS-CPS Translations into Other Languages](#)

This page links to some files in [Portable Document Format \(PDF\)](#).

TOBACCO USE SUPPLEMENT

CURRENT POPULATION SURVEY

Search:

Where Can I Get the TUS Data, Documentation, & Questionnaires?

2001-2002, 2003, and 2006 Questionnaires Available for Download

The questionnaires for the 2001-2002 and 2003 Tobacco Use Supplement to the Current Population Survey (TUS-CPS) are available for download below in two formats.

- 2006 TUSCS-CPS in English: [\[PDF\]](#) [\[MS Word\]](#)
- 2003 TUSCS-CPS in English: [\[PDF\]](#) [\[MS Word\]](#)
- 2003 TUSCS-CPS in Spanish: [\[PDF\]](#) [\[MS Word\]](#)
- 2001-02 TUS-CPS in English: [\[PDF\]](#) [\[MS Word\]](#)

For detailed information about the surveys and data sets, refer to:

- [Technical documentation for the 2003 TUSCS-CPS \(PDF\)](#) on this Web site
- [Technical documentation for 2002 and earlier years](#) on the US Census Bureau's site

Order TUS-CPS on CD-ROM

See the Census Bureau's instructions on [how to order from the Census Product Catalog](#). CD-ROMs may be ordered by phone, fax, or postal mail.

To find the Product ID of the CD that you want, see the Census Bureau's [tables of contents for Current Population Survey releases](#), or consult the table below.

TUS-CPS Contents	CD Name	Product ID
Feb., June, & Nov. 2003	Current Population Survey Releases in 2007 <i>(Contains the same data files as the 2006 release, plus updated technical documentation.)</i>	C7-C07-ALLF-06-US1
	Current Population Survey Releases in 2006	C13-C06-ALLF-06-US1

the TUS-CPS
 New, Updated, and Modified Files
[Print or view entire document \(excludes tables\)](#)
[TUS-CPS Fact Sheet \(PDF\)](#)

Translations:
[TUS-CPS Translations into Other Languages](#)

This page links to some files in [Portable Document Format \(PDF\)](#).

For detailed information about the surveys and data sets, refer to:

- [Technical documentation for the 2003 TUSCS-CPS \(PDF\)](#) on this Web site
- [Technical documentation for 2002 and earlier years](#) on the US Census Bureau's site

Order TUS-CPS on CD-ROM

See the Census Bureau's instructions on [how to order from the Census Product Catalog](#). CD-ROMs may be ordered by phone, fax, or postal mail.

To find the Product ID of the CD that you want, see the Census Bureau's [tables of contents for Current Population Survey releases](#), or consult the table below.

TUS-CPS Contents	CD Name	Product ID
Feb., June, & Nov. 2003	Current Population Survey Releases in 2007 <i>(Contains the same data files as the 2006 release, plus updated technical documentation.)</i>	C7-C07-ALLF-06-US1
	Current Population Survey Releases in 2006	C13-C06-ALLF-06-US1
February 2002	Current Population Survey - 2002 through 2004 All Files CD-ROM	C6-C04-ALLF-02-US1
June & November 2001	Current Population Survey 2001 All Files CD-ROM	C4-C01-ALLF-06-US1
January & May 2000	Current Population Survey 2000 All Files CD-ROM	C4-C00-ALLF-06-US1
1995-1999	Current Population Survey 1994-1999 All Files CD-ROM	C5-C99-ALLF-06-US1
1992-1993	Current Population Survey: 1992 and 1993 Tobacco Supplements	C1-C93-TOBF-02-US1

Last modified:
11 Oct 2007

[Search](#) | [Contact Us](#) | [Accessibility](#) | [Privacy Policy](#)

