

H A N D O U T O N H E A L T H

*Recognizing*  
The National  
Bone and Joint Decade  
2002–2011

# Rheumatoid Arthritis

**U.S. Department of Health and  
Human Services  
National Institutes of Health  
National Institute of Arthritis and  
Musculoskeletal and Skin Diseases**

## **For Your Information**

This publication contains information about medications used to treat the health condition discussed here. When this booklet was printed, we included the most up-to-date (accurate) information available. Occasionally, new information on medication is released.

For updates and for any questions about any medications you are taking, please contact the U.S. Food and Drug Administration at 1-888-INFO-FDA (1-888-463-6332, a toll-free call) or visit their Web site at [www.fda.gov](http://www.fda.gov).

This booklet is not copyrighted. Readers are encouraged to duplicate and distribute as many copies as needed.

Additional copies of this booklet are available from the National Institute of Arthritis and Musculoskeletal and Skin Diseases, NIAMS/National Institutes of Health, 1 AMS Circle, Bethesda, MD 20892-3675, and on the NIAMS Web site at [www.niams.nih.gov](http://www.niams.nih.gov).

# Contents

Features of Rheumatoid Arthritis . . . . .	1
How Rheumatoid Arthritis Develops and Progresses . .	3
Occurrence and Impact of Rheumatoid Arthritis . . . . .	5
Searching for the Causes of Rheumatoid Arthritis . . . . .	7
Diagnosing and Treating Rheumatoid Arthritis . . . . .	9
Diagnosis . . . . .	10
Treatment . . . . .	11
Current Research . . . . .	19
Hope for the Future . . . . .	36
For More Information . . . . .	37

## Illustration

Normal Joint and Joint Affected by Rheumatoid Arthritis . . . . .	4
--	---

## Information Boxes

Features of Rheumatoid Arthritis . . . . .	2
Goals of Treatment and Current Treatment Approaches . . . . .	12
Medications Commonly Used To Treat Rheumatoid Arthritis . . . . .	20





## Rheumatoid Arthritis

*This booklet is for people who have rheumatoid arthritis, as well as for their family members, friends, and others who want to find out more about this disease. The booklet describes how rheumatoid arthritis develops, how it is diagnosed, and how it is treated, including what people can do to help manage their disease. It also highlights current research efforts supported by the National Institute of Arthritis and Musculoskeletal and Skin Diseases (NIAMS) and other components of the Department of Health and Human Services' National Institutes of Health (NIH). If you have further questions after reading this booklet, you may wish to discuss them with your doctor.*

## Features of Rheumatoid Arthritis

**R**heumatoid arthritis is an inflammatory disease that causes pain, swelling, stiffness, and loss of function in the joints. It has several special features that make it different from other kinds of arthritis. (See “Features of Rheumatoid Arthritis,” page 2.) For example, rheumatoid arthritis generally occurs in a symmetrical pattern, meaning that if one knee or hand is involved, the other one also is. The disease often affects the wrist joints and the finger joints closest to the hand. It can also affect other parts of the body besides the joints. (See “Other Parts of the Body,” page 5.) In addition, people with rheumatoid arthritis may have fatigue, occasional fevers, and a general sense of not feeling well.

Rheumatoid arthritis affects people differently. For some people, it lasts only a few months or a year or two and goes away without causing any noticeable damage. Other people have mild or moderate forms of the disease, with periods of worsening symptoms, called flares, and periods in which they feel better, called remissions. Still others have a severe form of the disease that is active most of the time, lasts for many years or a lifetime, and leads to serious joint damage and disability.

### **Features of Rheumatoid Arthritis**

- Tender, warm, swollen joints
- Symmetrical pattern of affected joints
- Joint inflammation *often* affecting the wrist and finger joints closest to the hand
- Joint inflammation *sometimes* affecting other joints, including the neck, shoulders, elbows, hips, knees, ankles, and feet
- Fatigue, occasional fevers, a general sense of not feeling well
- Pain and stiffness lasting for more than 30 minutes in the morning or after a long rest
- Symptoms that last for many years
- Variability of symptoms among people with the disease

Although rheumatoid arthritis can have serious effects on a person's life and well-being, current treatment strategies – including pain-relieving drugs and medications that slow joint damage, a balance between rest and exercise, and patient education and support programs – allow most people with the disease to lead active and productive lives. In recent years, research has led to a new understanding of rheumatoid arthritis and has increased the likelihood that, in time, researchers will find even better ways to treat the disease.

---

**Current  
treatment  
strategies allow  
most people with  
the disease to  
lead active and  
productive lives.**

---

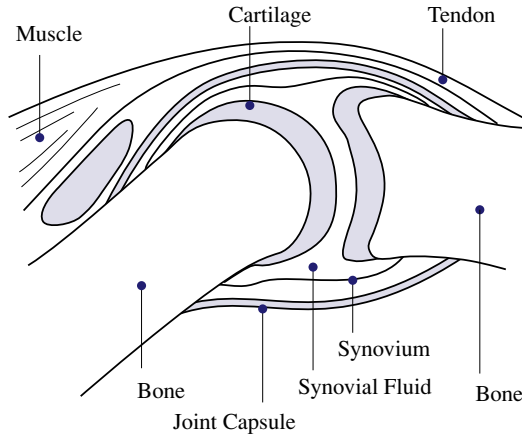
## **How Rheumatoid Arthritis Develops and Progresses**

### **The Joints**

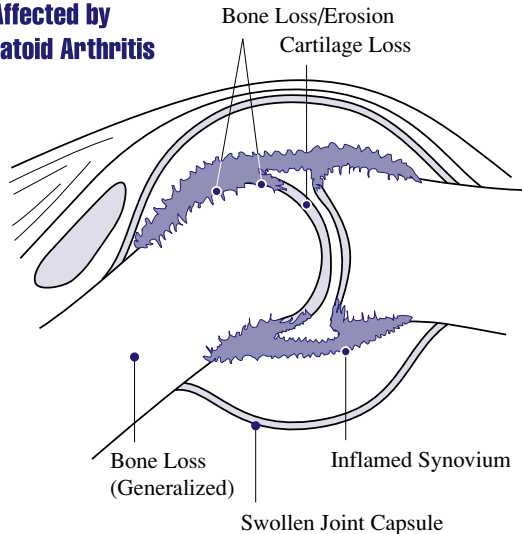
**A** joint is a place where two bones meet. The ends of the bones are covered by cartilage, which allows for easy movement of the two bones. The joint is surrounded by a capsule that protects and supports it. (See illustration, page 4.) The joint capsule is lined with a type of tissue called synovium, which produces synovial fluid, a clear substance that lubricates and nourishes the cartilage and bones inside the joint capsule.

Like many other rheumatic diseases, rheumatoid arthritis is an autoimmune disease (*auto* means self), so-called because a person's immune system, which normally helps protect the body from infection and disease, attacks joint tissues for unknown reasons. White blood cells, the agents of the immune system, travel to the synovium and cause inflammation (synovitis), characterized by warmth, redness, swelling, and pain – typical symptoms of rheumatoid arthritis. During the inflammation process, the

## Normal Joint



## Joint Affected by Rheumatoid Arthritis



A joint (the place where two bones meet) is surrounded by a capsule that protects and supports it. The joint capsule is lined with a type of tissue called synovium, which produces synovial fluid that lubricates and nourishes joint tissues. In rheumatoid arthritis, the synovium becomes inflamed, causing warmth, redness, swelling, and pain. As the disease progresses, the inflamed synovium invades and damages the cartilage and bone of the joint. Surrounding muscles, ligaments, and tendons become weakened. Rheumatoid arthritis also can cause more generalized bone loss that may lead to osteoporosis (fragile bones that are prone to fracture).



normally thin synovium becomes thick and makes the joint swollen and puffy to the touch. (See illustration, page 4.)

As rheumatoid arthritis progresses, the inflamed synovium invades and destroys the cartilage and bone within the joint. The surrounding muscles, ligaments, and tendons that support and stabilize the joint become weak and unable to work normally. These effects lead to the pain and joint damage often seen in rheumatoid arthritis. Researchers studying rheumatoid arthritis now believe that it begins to damage bones during the first year or two that a person has the disease, one reason why early diagnosis and treatment are so important.

## Other Parts of the Body

Some people with rheumatoid arthritis also have symptoms in places other than their joints. Many people with rheumatoid arthritis develop anemia, or a decrease in the production of red blood cells. Other effects that occur less often include neck pain and dry eyes and mouth. Very rarely, people may have inflammation of the blood vessels, the lining of the lungs, or the sac enclosing the heart.

## Occurrence and Impact of Rheumatoid Arthritis

**S**cientists estimate that about 1.3 million people, or about 0.6 percent of the U.S. adult population, have rheumatoid arthritis.\* Interestingly, some recent studies have suggested that although the number of new cases of rheumatoid arthritis for older people is increasing, the overall number of new cases may actually be going down.

---

\*According to the National Arthritis Data Workgroup, the actual number of new cases of rheumatoid arthritis is lower than previous estimates due to changes in the classification for the condition, as cited in "Estimates of the Prevalence of Arthritis and Other Rheumatic Conditions in the United States," *Arthritis and Rheumatism*, 58(1):15-25, January 2008.

Rheumatoid arthritis occurs in all races and ethnic groups. Although the disease often begins in middle age and occurs with increased frequency in older people, children and young adults also develop it. Like some other forms of arthritis, rheumatoid arthritis occurs much more frequently in women than in men. About two to three times as many women as men have the disease.

---

**The financial and social impact of all types of arthritis, including rheumatoid arthritis, is substantial, both for the Nation and for individuals.**

---

By all measures, the financial and social impact of all types of arthritis, including rheumatoid arthritis, is substantial, both for the Nation and for individuals. From an economic standpoint, the medical and surgical treatment for rheumatoid arthritis and the wages lost because of disability caused by the disease add up to billions of dollars annually. Daily joint pain is an inevitable consequence of the disease, and most patients also experience some degree of depression, anxiety, and feelings of helplessness. For some people, rheumatoid arthritis can interfere with

normal daily activities, limit job opportunities, or disrupt the joys and responsibilities of family life. However, there are arthritis self-management programs that help people cope with the pain and other effects of the disease and help them lead independent and productive lives. (See “Diagnosing and Treating Rheumatoid Arthritis,” page 9.)

## Searching for the Causes of Rheumatoid Arthritis

**S**cientists still do not know exactly what causes the immune system to turn against itself in rheumatoid arthritis, but research over the last few years has begun to piece together the factors involved.

***Genetic (inherited) factors:*** Scientists have discovered that certain genes known to play a role in the immune system are associated with a tendency to develop rheumatoid arthritis. Some people with rheumatoid arthritis do not have these particular genes; still others have these genes but never develop the disease. These somewhat contradictory data suggest that a person's genetic makeup plays an important role in determining if he or she will develop rheumatoid arthritis, but it is not the only factor. What is clear, however, is that more than one gene is involved in determining whether a person develops rheumatoid arthritis and how severe the disease will become.

***Environmental factors:*** Many scientists think that something must occur to trigger the disease process in people whose genetic makeup makes them susceptible to rheumatoid arthritis. A viral or bacterial infection appears likely, but the exact agent is not yet known. This does not mean that rheumatoid arthritis is contagious: a person cannot catch it from someone else.

---

**Research has begun to piece together the factors involved in causing rheumatoid arthritis.**

---

**Other factors:** Some scientists also think that a variety of hormonal factors may be involved. Women are more likely to develop rheumatoid arthritis than men, pregnancy may improve the disease, and the disease may

flare after a pregnancy. Breastfeeding may also aggravate the disease. Contraceptive use may alter a person's likelihood of developing rheumatoid arthritis. Scientists think that levels of the immune system molecules interleukin 12 (IL-12) and tumor necrosis factor-alpha (TNF- $\alpha$ ) may change along with the changing hormone levels seen in pregnant women. This change may contribute to the swelling and tissue destruction seen in rheumatoid arthritis. These hormones, or possibly deficiencies or

changes in certain hormones, may promote the development of rheumatoid arthritis in a genetically susceptible person who has been exposed to a triggering agent from the environment.

Even though all the answers are not known, one thing is certain: rheumatoid arthritis develops as a result of an interaction of many factors. Researchers are trying to understand these factors and how they work together. (See "Current Research," page 19.)

---

**Rheumatoid  
arthritis develops  
as a result of  
an interaction of  
many factors.**

---

## Diagnosing and Treating Rheumatoid Arthritis

**D**iagnosing and treating rheumatoid arthritis requires a team effort involving the patient and several types of health care professionals. A person can go to his or her family doctor or internist or to a rheumatologist. A rheumatologist is a doctor who specializes in arthritis and other diseases of the joints, bones, and muscles. As treatment progresses, other professionals often help. These may include nurses, physical or occupational therapists, orthopaedic surgeons, psychologists, and social workers.

Studies have shown that patients who are well informed and participate actively in their own care have less pain and make fewer visits to the doctor than do other patients with rheumatoid arthritis.

Patient education and arthritis self-management programs, as well as support groups, help people to become better informed and to participate in their own care. An example of a self-management program is the Arthritis Self-Help Course offered by the Arthritis Foundation and developed at a NIAMS-supported Multipurpose Arthritis and Musculoskeletal Diseases Center. (See the Arthritis Foundation listing in “For More Information,” page 39.) Self-management programs teach about rheumatoid arthritis and its treatments, exercise and relaxation

---

**People who are well informed and participate actively in their own care experience less pain and make fewer visits to the doctor.**

---

approaches, communication between patients and health care providers, and problem solving. Research on these programs has shown that they help people:

- understand the disease
- reduce their pain while remaining active
- cope physically, emotionally, and mentally
- feel greater control over the disease and build a sense of confidence in the ability to function and lead full, active, and independent lives.

## Diagnosis

Rheumatoid arthritis can be difficult to diagnose in its early stages for several reasons. First, there is no single test for the disease. In addition, symptoms differ from person to person and can be more severe in some people than in others. Also, symptoms can be similar to those of other types of arthritis and joint conditions, and it may take some time for other conditions to be ruled out. Finally, the full range of symptoms develops over time, and only a few symptoms may be present in the early stages. As a result, doctors use a variety of the following tools to diagnose the disease and to rule out other conditions:

***Medical history:*** This is the patient's description of symptoms and when and how they began. Good communication between patient and doctor is especially important here. For example, the patient's description of pain, stiffness, and joint function and how these change over time is critical to the doctor's initial assessment of the disease and how it changes over time.

**Physical examination:** This includes the doctor's examination of the joints, skin, reflexes, and muscle strength.

**Laboratory tests:** One common test is for rheumatoid factor, an antibody that is present eventually in the blood of most people with rheumatoid arthritis. (An antibody is a special protein made by the immune system that normally helps fight foreign substances in the body.) Not all people with rheumatoid arthritis test positive for rheumatoid factor, however, especially early in the disease. Also, some people test positive for rheumatoid factor, yet never develop the disease. Other common laboratory tests include a white blood cell count, a blood test for anemia, and a test of the erythrocyte sedimentation rate (often called the sed rate), which measures inflammation in the body. C-reactive protein is another common test that measures disease activity.

**X rays:** X rays are used to determine the degree of joint destruction. They are not useful in the early stages of rheumatoid arthritis before bone damage is evident, but they can be used later to monitor the progression of the disease.

## **Treatment**

Doctors use a variety of approaches to treat rheumatoid arthritis. These are used in different combinations and at different times during the course of the disease and are chosen according to the patient's individual situation. No matter what treatment the doctor and patient choose, however, the goals are the same: to relieve pain, reduce inflammation, slow down or stop joint damage, and improve the person's sense of well-being and ability to function.

## Goals of Treatment

- Relieve pain
- Reduce inflammation
- Slow down or stop joint damage
- Improve a sense of well-being and ability to function

## Current Treatment Approaches

- Health behavior changes
- Medications
- Surgery
- Routine monitoring and ongoing care

Good communication between the patient and doctor is necessary for effective treatment. Talking to the doctor can help ensure that exercise and pain management programs are provided as needed, and that drugs are prescribed appropriately. Talking to the doctor can also help people who are making decisions about surgery.

***Health behavior changes:*** Certain activities can help improve a person's ability to function independently and maintain a positive outlook.

**Rest and exercise:** People with rheumatoid arthritis need a good balance between rest and exercise, with more rest when the disease is active and more exercise when it is not. Rest helps to reduce active



joint inflammation and pain and to fight fatigue. The length of time for rest will vary from person to person, but in general, shorter rest breaks every now and then are more helpful than long times spent in bed.

Exercise is important for maintaining healthy and strong muscles, preserving joint mobility, and maintaining flexibility. Exercise can also help people sleep well, reduce pain, maintain a positive attitude, and lose weight. Exercise programs should take into account the person's physical abilities, limitations, and changing needs.

---

**People with  
rheumatoid  
arthritis need  
a good balance  
between rest  
and exercise.**

---

**Joint care:** Some people find using a splint for a short time around a painful joint reduces pain and swelling by supporting the joint and letting it rest. Splints are used mostly on wrists and hands, but also on ankles and feet. A doctor or a physical or occupational therapist can help a person choose a splint and make sure it fits properly. Other ways to reduce stress on joints include self-help devices (for example, zipper pullers, long-handled shoe horns); devices to help with getting on and off chairs, toilet seats, and beds; and changes in the ways that a person carries out daily activities.

**Stress reduction:** People with rheumatoid arthritis face emotional challenges as well as physical ones. The emotions they feel because of the disease – fear, anger, and frustration – combined with any pain and

physical limitations can increase their stress level. Although there is no evidence that stress plays a role in causing rheumatoid arthritis, it can make living with the disease difficult at times. Stress also may affect the amount of pain a person feels. There are a number of successful techniques for coping with stress. Regular rest periods can help, as can relaxation, distraction, or visualization exercises. Exercise programs, participation in support groups, and good communication with the health care team are other ways to reduce stress.

---

**An overall nutritious diet with enough calories, protein, and calcium is important.**

---

**Healthful diet:** With the exception of several specific types of oils (see “Current Research,” page 35), there is no scientific evidence that any specific food or nutrient helps or harms people with rheumatoid arthritis. However, an overall nutritious diet with enough – but not an excess of – calories, protein, and calcium is important. Some people may need to be careful about drinking alcoholic beverages because of the medications they take for rheumatoid arthritis. Those taking methotrexate may need to avoid alcohol altogether because one of the most serious long-term side effects of methotrexate is liver damage.

**Climate:** Some people notice that their arthritis gets worse when there is a sudden change in the weather. However, there is no evidence that a specific climate can prevent or reduce the effects of rheumatoid

arthritis. Moving to a new place with a different climate usually does not make a long-term difference in a person's rheumatoid arthritis.

**Medications:** Most people who have rheumatoid arthritis take medications. Some medications are used only for pain relief; others are used to reduce inflammation. Still others, often called disease-modifying antirheumatic drugs (DMARDs), are used to try to slow the course of the disease. The person's general condition, the current and predicted severity of the illness, the length of time he or she will take the drug, and the drug's effectiveness and potential side effects are important considerations in prescribing drugs for rheumatoid arthritis. The table starting on page 20 shows currently used rheumatoid arthritis medications, along with their uses and effects, side effects, and monitoring requirements.

Biologic response modifiers are new drugs used for the treatment of rheumatoid arthritis. They can help reduce inflammation and structural damage to the joints by blocking the action of cytokines, proteins of the body's immune system that trigger inflammation during normal immune responses. Three of these drugs, etanercept (Enbrel\*), infliximab (Remicade), and adalimumab (Humira), reduce inflammation by blocking the reaction of TNF- $\alpha$  molecules. Another drug, called anakinra (Kineret), works by blocking a protein called interleukin 1 (IL-1) that is seen in excess in patients with rheumatoid arthritis.

---

\* Brand names included in this booklet are provided as examples only, and their inclusion does not mean that these products are endorsed by the National Institutes of Health or any other Government agency. Also, if a particular brand name is not mentioned, this does not mean or imply that the product is unsatisfactory.

For many years, doctors initially prescribed aspirin or other pain-relieving drugs for rheumatoid arthritis, as well as rest and physical therapy. They usually prescribed more powerful drugs later only if the disease worsened.

Today, however, many doctors have changed their approach, especially for patients with severe, rapidly progressing rheumatoid arthritis. Studies show that early treatment with more powerful drugs, and the use of drug combinations instead of one medication alone, may be more effective in reducing or preventing joint damage. Once the disease improves or is in remission, the doctor may gradually reduce the dosage or prescribe a milder medication.

**Surgery:** Several types of surgery are available to patients with severe joint damage. The primary purpose of these procedures is to reduce pain, improve the affected joint's function, and improve the patient's ability to perform daily activities. Surgery is not for everyone, however, and the decision should be made only after careful consideration by patient and doctor. Together they should discuss the patient's overall health, the condition of the joint or tendon that will be operated on, and the reason for, as well as the risks and benefits of, the surgical procedure. Cost may be another factor. Commonly performed surgical procedures include joint replacement, tendon reconstruction, and synovectomy.

**Joint replacement:** This is the most frequently performed surgery for rheumatoid arthritis, and it is done primarily to relieve pain and improve or preserve joint function. Artificial joints are not always permanent and may eventually have to be replaced.

This may be an important consideration for young people.

**Tendon reconstruction:** Rheumatoid arthritis can damage and even rupture tendons, the tissues that attach muscle to bone. This surgery, which is used most frequently on the hands, reconstructs the damaged tendon by attaching an intact tendon to it. This procedure can help to restore hand function, especially if the tendon is completely ruptured.

**Synovectomy:** In this surgery, the doctor actually removes the inflamed synovial tissue. Synovectomy by itself is seldom performed now because not all of the tissue can be removed, and it eventually grows back. Synovectomy is done as part of reconstructive surgery, especially tendon reconstruction.

***Routine monitoring and ongoing care:*** Regular medical care is important to monitor the course of the disease, determine the effectiveness and any negative effects of medications, and change therapies as needed. Monitoring typically includes regular visits to the doctor. It also may include blood, urine, and other laboratory tests and x rays.

People with rheumatoid arthritis may want to discuss preventing osteoporosis with their doctors as part of their long-term, ongoing care. Osteoporosis is a condition in which bones become weakened and fragile. Having rheumatoid arthritis increases the risk of developing osteoporosis for both men and women, particularly if a person takes corticosteroids. Such patients may want to discuss with their doctors the potential benefits of calcium and vitamin D supplements, hormone therapy, or other treatments for osteoporosis.

*Alternative and complementary therapies:* Special diets, vitamin supplements, and other alternative approaches have been suggested for treating rheumatoid arthritis. Although many of these

---

**Patients may want to discuss preventing osteoporosis with their doctors as part of their long-term, ongoing care.**

---

approaches may not be harmful in and of themselves, controlled scientific studies either have not been conducted on them or have found no definite benefit to these therapies. Some alternative or complementary approaches may help the patient cope or reduce some of the stress associated with living with a chronic illness. As with any therapy, patients should discuss the benefits and drawbacks with their doctors before beginning an alternative or new type of therapy. If the doctor feels the approach has value and will not be harmful, it can be incorporated into a patient's treatment plan. However,

it is important not to neglect regular health care. The Arthritis Foundation publishes material on alternative therapies as well as established therapies, and patients may want to contact this organization for information. (See the "For More Information" section of this booklet, page 39.)

## Current Research

**O**ver the last several decades, research has greatly increased our understanding of the immune system, genetics, and biology. This research is now showing results in several areas important to rheumatoid arthritis. Scientists are thinking about rheumatoid arthritis in exciting ways that were not possible even 10 years ago.

The National Institutes of Health (NIH) funds a wide variety of medical research at its headquarters in Bethesda, Maryland, and at universities and medical centers across the United States. One of the NIH institutes, the National Institute of Arthritis and Musculoskeletal and Skin Diseases (NIAMS), is a major supporter of research and research training in rheumatoid arthritis through grants to individual scientists, Specialized Centers of Research, Multidisciplinary Clinical Research Centers, and Multipurpose Arthritis and Musculoskeletal Diseases Centers.

Following are examples of current research directions in rheumatoid arthritis supported by the Federal Government through the NIAMS and other parts of the NIH.

Scientists are looking at the immune systems of people with rheumatoid arthritis and in some animal models of the disease to understand why and how the disease develops. For example, small studies are looking at the role of T cells, which play an important role in

---

**Scientists are thinking about rheumatoid arthritis in exciting ways that were not possible even 10 years ago.**

---

<b>Medications</b>	<b>Uses/Effects</b>
<p><b>Analgesics and Nonsteroidal Anti-inflammatory Drugs (NSAIDs)</b></p>	<p>Analgesics relieve pain; NSAIDs are a large class of medications useful against pain and inflammation. A number of NSAIDs are available over the counter. More than a dozen others – including a subclass called COX-2 inhibitors – are available only with a prescription.</p>
<p>Acetaminophen</p>	<p>Nonprescription medications used to relieve pain. Examples are aspirin-free Anacin*, Excedrin caplets, Panadol, Tylenol, and Tylenol Arthritis.</p>
<hr/> <p>* NOTE: Brand names included in this booklet are provided as examples only, and their inclusion does not mean that these products are endorsed by the National Institutes of Health or any other Government agency. Also, if a particular brand name is not mentioned, this does not mean or imply that the product is unsatisfactory.</p>	



<b>Side Effects</b>	<b>Monitoring</b>
<p>NSAIDs can cause stomach irritation or, less often, can affect kidney function. The longer a person uses NSAIDs, the more likely he or she is to have side effects, ranging from mild to serious. Many other drugs cannot be taken when a patient is being treated with NSAIDs because they alter the way the body uses or eliminates these other drugs. NSAIDs sometimes are associated with serious gastrointestinal problems, including ulcers, bleeding, and perforation of the stomach or intestine. People over age 65 and those with any history of ulcers or gastrointestinal bleeding should use NSAIDs with caution.</p>	<p>Check with your health care provider or pharmacist before you take NSAIDs. Before taking traditional NSAIDs, let your provider know if you drink alcohol or use blood thinners or if you have any of the following: sensitivity or allergy to aspirin or similar drugs, kidney or liver disease, heart disease, high blood pressure, asthma, or peptic ulcers.</p>
<p>Usually no side effects when taken as directed.</p>	<p>Not to be taken with alcohol or with other products containing acetaminophen. Not to be used for more than 10 days unless directed by a physician.</p>

(continued)

<b>Medications</b>	<b>Uses/Effects</b>
<p>Aspirin <i>Buffered</i> <i>Plain</i></p>	<p>Aspirin is used to reduce pain, swelling, and inflammation, allowing patients to move more easily and carry out normal activities. It is generally part of early and ongoing therapy.</p>
<p>Traditional NSAIDs <i>Ibuprofen</i> <i>Ketoprofen</i> <i>Naproxen</i></p>	<p>NSAIDs help relieve pain within hours of administration in dosages available over-the-counter (available for all three medications). They relieve pain and inflammation in dosages available in prescription form (ibuprofen and ketoprofen). It may take several days to reduce inflammation.</p>
<p><b>Corticosteroids</b></p>	<p>These are steroids given by mouth or injection. They are used to relieve inflammation and reduce swelling, redness, itching, and allergic reactions.</p>
<p><i>Methylprednisolone</i> <i>Prednisone</i></p>	<p>These steroids are available in pill form or as an injection into a joint. Improvements are seen in several hours up to 24 hours after administration. There is potential for serious side effects, especially at high doses. They are used for severe flares and when the disease does not respond to NSAIDs and DMARDs.</p>

<b>Side Effects</b>	<b>Monitoring</b>
Upset stomach; tendency to bruise easily; ulcers, pain, or discomfort; diarrhea; headache; heartburn or indigestion; nausea or vomiting.	Doctor monitoring is needed.
For all traditional NSAIDs: Abdominal or stomach cramps, pain, or discomfort; diarrhea; dizziness; drowsiness or light-headedness; headache; heartburn or indigestion; peptic ulcers; nausea or vomiting; possible kidney and liver damage (rare).	For all traditional NSAIDs: Before taking these drugs, let your doctor know if you drink alcohol or use blood thinners or if you have or have had any of the following: sensitivity or allergy to aspirin or similar drugs, kidney or liver disease, heart disease, high blood pressure, asthma, or peptic ulcers.
Increased appetite, indigestion, nervousness, or restlessness.	For all corticosteroids, let your doctor know if you have one of the following: fungal infection, history of tuberculosis, underactive thyroid, herpes simplex of the eye, high blood pressure, osteoporosis, or stomach ulcer.
Osteoporosis, mood changes, fragile skin, easy bruising, fluid retention, weight gain, muscle weakness, onset or worsening of diabetes, cataracts, increased risk of infection, hypertension (high blood pressure).	Doctor monitoring for continued effectiveness of medication and for side effects is needed.

(continued)

<b>Medications</b>	<b>Uses/Effects</b>
<b>Disease-modifying antirheumatic drugs (DMARDs)</b>	These are common arthritis medications. They relieve painful, swollen joints and slow joint damage, and several DMARDs may be used over the disease course. They take a few weeks or months to have an effect, and may produce significant improvements for many patients. Exactly how they work is still unknown.
<i>Azathioprine</i>	This drug was first used in higher doses in cancer chemotherapy and organ transplantation. It is used in patients who have not responded to other drugs, and in combination therapy.
<i>Cyclosporine</i>	This medication was first used in organ transplantation to prevent rejection. It is used in patients who have not responded to other drugs.

<b>Side Effects</b>	<b>Monitoring</b>
<p>Side effects vary with each medicine. DMARDs may increase risk of infection, hair loss, and kidney or liver damage.</p>	<p>Doctor monitoring allows the risk of toxicities to be weighed against the potential benefits of individual medications.</p>
<p>Cough or hoarseness, fever or chills, loss of appetite, lower back or side pain, nausea or vomiting, painful or difficult urination, unusual tiredness or weakness.</p>	<p>Before taking this drug, tell your doctor if you use allopurinol or have kidney or liver disease. This drug can reduce your ability to fight infection, so call your doctor immediately if you develop chills, fever, or a cough. Regular blood and liver function tests are needed.</p>
<p>Bleeding, tender, or enlarged gums; high blood pressure; increase in hair growth; kidney problems; trembling and shaking of hands.</p>	<p>Before taking this drug, tell your doctor if you have one of the following: sensitivity to castor oil (if receiving the drug by injection), liver or kidney disease, active infection, or high blood pressure. Using this drug may make you more susceptible to infection and certain cancers. Do not take live vaccines while on this drug.</p>

(continued)

<b>Medications</b>	<b>Uses/Effects</b>
<i>Hydroxychloroquine</i>	It may take several months to notice the benefits of this drug, which include reducing the signs and symptoms of rheumatoid arthritis.
<i>Gold sodium thiomalate</i>	This was one of the first DMARDs used to treat rheumatoid arthritis.
<i>Leflunomide</i>	This drug reduces signs and symptoms and slows structural damage to joints caused by arthritis.

<b>Side Effects</b>	<b>Monitoring</b>
<p>Diarrhea, eye problems (rare), headache, loss of appetite, nausea or vomiting, stomach cramps or pain.</p>	<p>Doctor monitoring is important, particularly if you have an allergy to any antimalarial drug or a retinal abnormality.</p>
<p>Redness or soreness of tongue; swelling or bleeding gums; skin rash or itching; ulcers or sores on lips, mouth, or throat; irritation on tongue. Joint pain may occur for one or two days after injection.</p>	<p>Before taking this drug, tell your doctor if you have any of the following: lupus, skin rash, kidney disease, or colitis. Periodic urine and blood tests are needed to check for side effects.</p>
<p>Bloody or cloudy urine; congestion in chest; cough; diarrhea; difficult, burning, or painful urination or breathing; fever; hair loss; headache; heartburn; loss of appetite; nausea and/or vomiting; skin rash; stomach pain; sneezing; and sore throat.</p>	<p>Before taking this medication, let your doctor know if you have one of the following: active infection, liver disease, known immune deficiency, renal insufficiency, or underlying malignancy. You will need regular blood tests, including liver function tests. Leflunomide must not be taken during pregnancy because it may cause birth defects in humans.</p>

(continued)

<b>Medications</b>	<b>Uses/Effects</b>
<i>Methotrexate</i>	This drug can be taken by mouth or by injection and results in rapid improvement (it usually takes 3-6 weeks to begin working). It appears to be very effective, especially in combination with infliximab or etanercept. In general, it produces more favorable long-term responses compared with other DMARDs such as sulfasalazine, gold sodium thiomalate, and hydroxychloroquine.
<i>Sulfasalazine</i>	This drug works to reduce the signs and symptoms of rheumatoid arthritis by suppressing the immune system.
<b>Biologic Response Modifiers</b>	These drugs selectively block parts of the immune system called cytokines. Cytokines play a role in inflammation. Long-term efficacy and safety are uncertain.



<b>Side Effects</b>	<b>Monitoring</b>
<p>Abdominal discomfort, chest pain, chills, nausea, mouth sores, painful urination, sore throat, unusual tiredness or weakness.</p>	<p>Doctor monitoring is important, particularly if you have an abnormal blood count, liver or lung disease, alcoholism, immune-system deficiency, or active infection. Methotrexate must not be taken during pregnancy because it may cause birth defects in humans.</p>
<p>Abdominal pain, aching joints, diarrhea, headache, sensitivity to sunlight, loss of appetite, nausea or vomiting, skin rash.</p>	<p>Doctor monitoring is important, particularly if you are allergic to sulfa drugs or aspirin, or if you have a kidney, liver, or blood disease.</p>
<p>Increased risk of infection, especially tuberculosis. Increased risk of pneumonia, and listeriosis (a foodborne illness caused by the bacterium <i>Listeria monocytogenes</i>).</p>	<p>It is important to avoid eating undercooked foods (including unpasteurized cheeses, cold cuts, and hot dogs) because undercooked food can cause listeriosis for patients taking biologic response modifiers.</p>

(continued)

<b>Medications</b>	<b>Uses/Effects</b>
<p>Tumor Necrosis Factor Inhibitors</p> <p><i>Etanercept</i> <i>Infliximab</i> <i>Adalimumab</i></p>	<p>These medications are highly effective for treating patients with an inadequate response to DMARDs. They may be prescribed in combination with some DMARDs, particularly methotrexate. Etanercept requires subcutaneous (beneath the skin) injections two times per week. Infliximab is taken intravenously (IV) during a 2-hour procedure. It is administered with methotrexate. Adalimumab requires injections every 2 weeks. Long-term efficacy and safety are uncertain.</p>
<p>Interleukin1 Inhibitor</p> <p><i>Anakinra</i></p>	<p>This medication requires daily injections. Long-term efficacy and safety are uncertain.</p>

Side Effects	Monitoring
<p><i>Etanercept:</i> Pain or burning in throat; redness, itching, pain, and/or swelling at injection site; runny or stuffy nose.</p> <p><i>Infliximab:</i> Abdominal pain, cough, dizziness, fainting, headache, muscle pain, runny nose, shortness of breath, sore throat, vomiting, wheezing.</p> <p><i>Adalimumab:</i> Redness, rash, swelling, itching, bruising, sinus infection, headache, nausea.</p>	<p>Long-term efficacy and safety are uncertain. Doctor monitoring is important, particularly if you have an active infection, exposure to tuberculosis, or a central nervous system disorder. Evaluation for tuberculosis is necessary before treatment begins.</p>
<p>Redness, swelling, bruising, or pain at the site of injection; head-ache; upset stomach; diarrhea; runny nose; and stomach pain.</p>	<p>Doctor monitoring is required.</p>

immunity and in the progression of rheumatoid arthritis. Findings from these studies may lead to precise, targeted therapies that could stop the inflammatory process in its earliest stages. They may even lead to a vaccine that could prevent rheumatoid arthritis.

Researchers are studying genetic factors that predispose some people to developing rheumatoid arthritis, as well as factors connected with disease severity. For example, by studying genetically engineered mice, scientists supported by the NIH discovered that immune cells called mast cells play a key role in the development of rheumatoid arthritis. Findings from these studies should increase our understanding of the disease and will help develop new therapies, as well as guide treatment decisions.

In a major effort aimed at identifying genes involved in rheumatoid arthritis, the NIH and the Arthritis Foundation have joined together to support the North American Rheumatoid Arthritis Consortium. This group of 10 research centers around the United States is collecting medical information and genetic material from 1,000 families in which two or more siblings have rheumatoid arthritis. It serves as a national resource for genetic studies of this disease.

To help identify the multiple factors that predict disease course and outcomes in rheumatoid arthritis in African Americans, the NIH is supporting the Consortium for the Longitudinal Evaluations of African Americans with Early Rheumatoid Arthritis (CLEAR) Registry at the University of Alabama at Birmingham. This registry aims to collect clinical and x-ray data and DNA to

help scientists analyze genetic and nongenetic factors that predict disease course and outcomes of rheumatoid arthritis.

Scientists are also unearthing the genetic basis of rheumatoid arthritis by studying rats with a condition that resembles rheumatoid arthritis in humans. NIAMS researchers have identified several genetic regions that affect arthritis susceptibility and severity in these animal models of the disease. These genetic regions are important because they can assist scientists in predicting the symptoms and severity of rheumatoid arthritis. Replacing malfunctioning genes with healthy genes (gene transfer) is being tested in mice, and it may eventually be used in humans to treat rheumatoid arthritis.

Researchers are also uncovering the complex relationships between the hormonal, nervous, and immune systems in rheumatoid arthritis. For example, they are exploring whether and how the normal changes in the levels of naturally produced steroid hormones (such as estrogen and testosterone) during a person's lifetime may be related to the development, improvement, or flares of the disease. Scientists also are researching how these systems interact with environmental and genetic factors. The results of this research may suggest new treatment strategies.

Scientists are exploring why so many more women than men develop rheumatoid arthritis. In hopes of finding clues, they are studying female and male hormones and other differences between women and men.

Scientists are examining why rheumatoid arthritis often improves during pregnancy. Results of one study suggest that the explanation may be related to differences in certain special proteins that pass between a mother and her unborn child. These proteins help the immune system dis-

tinguish between the body's own cells and foreign cells. Such differences, the scientists speculate, may change the activity of the mother's immune system during pregnancy.

---

**Scientists are searching for new drugs that can slow or stop the progression of rheumatoid arthritis.**

---

A growing body of evidence indicates that infectious agents, such as viruses and bacteria, may trigger rheumatoid arthritis in people who have an inherited predisposition to the disease. Scientists are trying to discover which infectious agents may be responsible and how they trigger arthritis.

Researchers are searching for new drugs or combinations of drugs that can reduce inflammation and slow or stop the progression of rheumatoid arthritis with few side effects. Already, the new biologic response modifiers infliximab and etanercept are proving to be extremely effective for some people. Studies show that these treatments are more effective at slowing joint damage than methotrexate alone. Combination treatment with etanercept *and* methotrexate or infliximab *and* methotrexate has been found even more effective than either of the new treatments alone. (Methotrexate was used for comparison because it is a commonly prescribed "front-line" treatment.) The U.S. Food and Drug Admin-

istration recently approved adalimumab (Humira) for slowing the progression of structural damage in adults with moderate to severe rheumatoid arthritis who have not responded well to one or more disease modifying antirheumatic drugs.

Investigators have also shown that treatment of rheumatoid arthritis with minocycline, a drug in the tetracycline family, has a modest benefit. Other studies have shown that the omega-3 fatty acids in certain fish or plant seed oils also may reduce rheumatoid arthritis inflammation. However, many people are not able to tolerate the large amounts of oil necessary for any benefit.

Scientists are examining many issues related to quality of life for people with rheumatoid arthritis and the quality, cost, and effectiveness of the health care services they receive.

Some new techniques for managing symptoms under investigation include tai chi (a form of movement-based meditation), and cognitive-behavioral therapy (a technique that teaches you to anticipate and prepare yourself for the situations and bodily sensations that may trigger painful symptoms). Scientists have found that even a small improvement in a patient's sense of physical and mental well-being can have an impact on his or her quality of life and use of health care services.

---

**Even a small improvement in a patient's sense of physical and mental well-being can have an impact on his or her quality of life.**

---

## Hope for the Future

**S**cientists are making rapid progress in understanding the complexities of rheumatoid arthritis: how and why it develops, why some people get it and others do not, why some people get it more severely than others. Results from research are having an impact today, enabling people with rheumatoid arthritis to remain active in life, family, and work far longer than was possible 20 years ago. There is also hope for tomorrow, as researchers begin to apply new technologies such as stem cell transplantation and novel imaging techniques. (Stem cells have the capacity to differentiate into specific cell types, which gives them the potential to change damaged tissue in which they are placed.) These and other advances will lead to an improved quality of life for people with rheumatoid arthritis.



## For More Information

### **National Institute of Arthritis and Musculoskeletal and Skin Diseases (NIAMS)**

National Institutes of Health  
1 AMS Circle  
Bethesda, MD 20892-3675  
Phone: 301-495-4484 or  
877-22-NIAMS (226-4267) (free of charge)  
TTY: 301-565-2966  
Fax: 301-718-6366  
E-mail: [NIAMSinfo@mail.nih.gov](mailto:NIAMSinfo@mail.nih.gov)  
[www.niams.nih.gov](http://www.niams.nih.gov)

The National Institute of Arthritis and Musculoskeletal and Skin Diseases provides information about various forms of arthritis and rheumatic diseases. It distributes patient and professional education materials and also refers people to other sources of information.

### **The National Institute of Allergy and Infectious Diseases**

National Institutes of Health  
Building 31, Room 7A50  
31 Center Drive, MSC 2520  
Bethesda, MD 20892-2520  
Phone: 301-496-5717  
Fax: 301-402-0120  
[www.niaid.nih.gov](http://www.niaid.nih.gov)

The National Institute of Allergy and Infectious Diseases conducts and supports research that strives to understand, treat, and ultimately prevent the myriad infectious, immunologic, and allergic diseases that threaten hundreds of millions of people worldwide. The Institute's mission is driven by a strong commitment to basic research and the understanding that the fields of immunology, microbiology, and infectious disease are related and complementary.

**National Center for Complementary  
and Alternative Medicine**

NCCAM Clearinghouse  
P.O. Box 7923  
Gaithersburg, MD 20898-7923  
Phone: 301-519-3153 or  
888-644-6226 (free of charge)  
TTY: 866-464-3615  
Fax: 866-464-3616  
[www.nccam.nih.gov](http://www.nccam.nih.gov)

The National Center for Complementary and Alternative Medicine is dedicated to exploring complementary and alternative healing practices in the context of rigorous science, training complementary and alternative medicine researchers, and disseminating authoritative information to the public and professionals.

**American Academy of Orthopaedic Surgeons (AAOS)**

P.O. Box 2058  
Des Plaines, IL 60017  
Phone: 800-824-BONE (2263) (free of charge)  
[www.aaos.org](http://www.aaos.org)

The academy provides education and practice management services for orthopaedic surgeons and allied health professionals. It also serves as an advocate for improved patient care and informs the public about the science of orthopaedics. The orthopaedist's scope of practice includes disorders of the body's bones, joints, ligaments, muscles, and tendons. For a single copy of an AAOS brochure, send a self-addressed, stamped envelope to the address above or visit the AAOS Web site.

## **American College of Rheumatology (ACR)**

1800 Century Place, Suite 250

Atlanta, GA 30345-4300

Phone: 404-633-3777

Fax: 404-633-1870

[www.rheumatology.org](http://www.rheumatology.org)

The American College of Rheumatology is an organization of doctors and associated health professionals who specialize in arthritis and related diseases of the bones, joints, and muscles. The Association of Rheumatology Health Professionals, a division of ACR, aims to enhance the knowledge and skills of rheumatology health professionals and to promote their involvement in rheumatology research, education, and quality patient care. The association also works to advance and promote basic and continuing education in rheumatology for health professionals who provide care to people with rheumatic diseases.



### **Arthritis Foundation**

P.O. Box 7669

Atlanta, GA 30357-0669

Phone: 404-872-7100 or

800-283-7800 (free of charge)

[www.arthritis.org](http://www.arthritis.org)

The Arthritis Foundation is devoted to supporting arthritis research and providing educational and other services to individuals with arthritis. The foundation publishes a free pamphlet on rheumatoid arthritis and a magazine for members on all types of arthritis. It also provides up-to-date information on research and treatment, nutrition, alternative therapies, and self-management strategies. Chapters nationwide offer exercise programs, classes, support groups, physician referral services, and free literature. The foundation also has free information about lupus, scleroderma, and other autoimmune and rheumatic conditions on its Web site.

## Acknowledgments

NIAMS gratefully acknowledges the assistance of the following people in the preparation and review of this and earlier versions of this publication: John H. Klippel, M.D., Arthritis Foundation, Washington, DC; Amye L. Leong, Paris, France; Michael D. Lockshin, M.D., Barbara Volcker Center for Women and Rheumatic Disease, Hospital for Special Surgery, New York, New York; Kate Lorig, R.N., Dr.P.H., Stanford University, Stanford, California; J. Lee Nelson, M.D., Fred Hutchinson Cancer Research Center, Seattle, Washington; Paul G. Rochmis, M.D., Fairfax, Virginia; Ronald L. Wilder, M.D., Ph.D., MedImmune, Inc., Gaithersburg, Maryland; Stanley R. Pillemer, M.D, NIH; and Reva Lawrence, M.P.H., Paul H. Plotz, M.D., and Susana Serrate-Sztejn, M.D., NIAMS, NIH. Special thanks also go to Cheryl Yarboro, R.N., B.S.P.A., NIAMS, NIH, and to the patients who reviewed this publication and provided valuable input.



The mission of the National Institute of Arthritis and Musculoskeletal and Skin Diseases (NIAMS), a part of the Department of Health and Human Services' National Institutes of Health (NIH), is to support research into the causes, treatment, and prevention of arthritis and musculoskeletal and skin diseases; the training of basic and clinical scientists to carry out this research; and the dissemination of information on research progress in these diseases. The National Institute of Arthritis and Musculoskeletal and Skin Diseases Information Clearinghouse is a public service sponsored by NIAMS that provides health information and information sources. Additional information can be found on the NIAMS Web site at [www.niams.nih.gov](http://www.niams.nih.gov). Information on bone and its disorders can be obtained from the NIH Osteoporosis and Related Bone Diseases~National Resource Center; phone (toll-free) 800-624-BONE (2663) or visit [www.niams.nih.gov/bone](http://www.niams.nih.gov/bone).



**U.S. Department of Health and  
Human Services**

**Public Health Service**

**National Institutes of Health**

**National Institute of Arthritis and  
Musculoskeletal and Skin Diseases**

**NIH Publication No. 04-4179**

**Revised May 2004**