



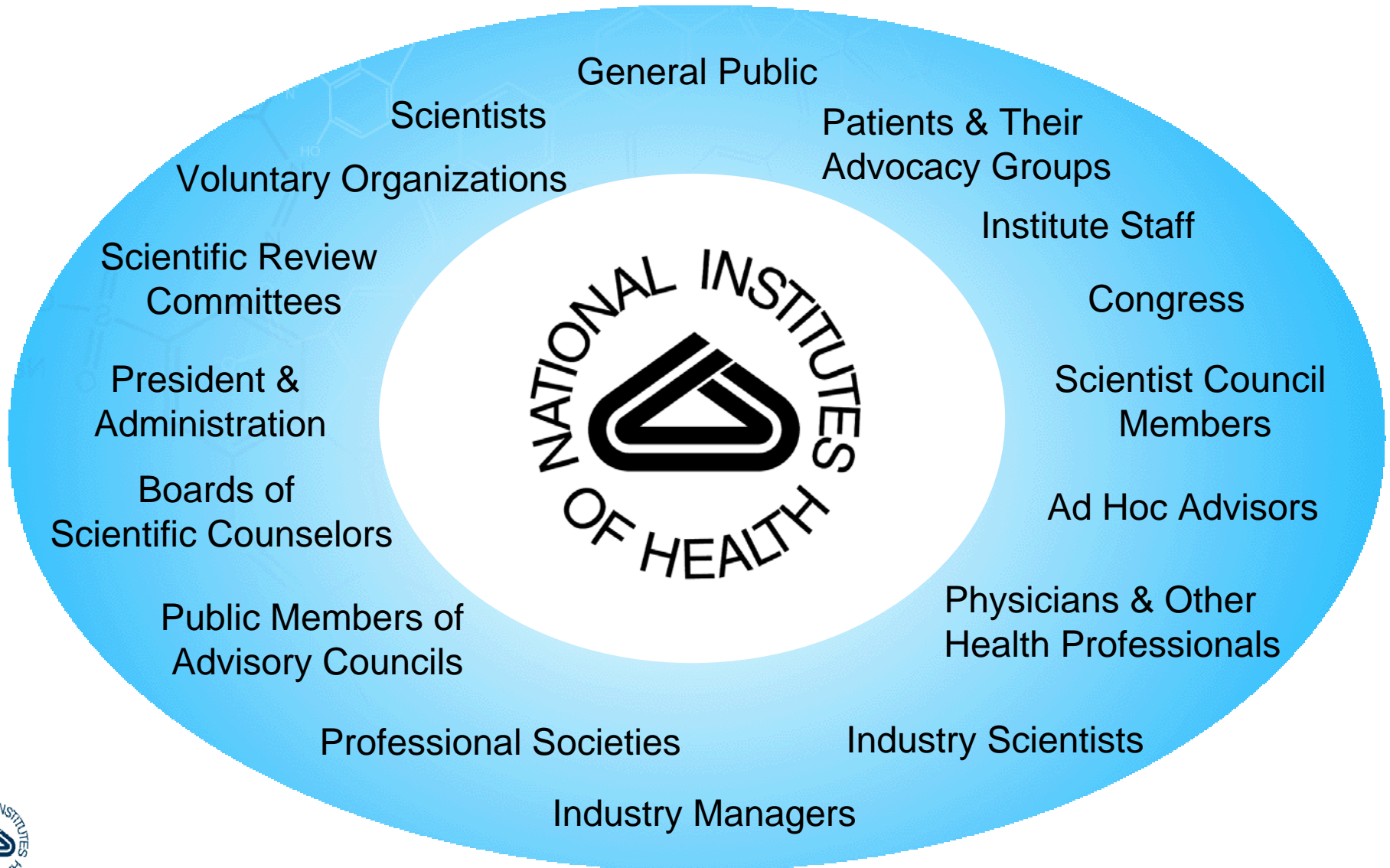
How COPR Can Help Advance Biomedical Research

**Director's Council of Public Representatives Meeting
April 21, 2006**

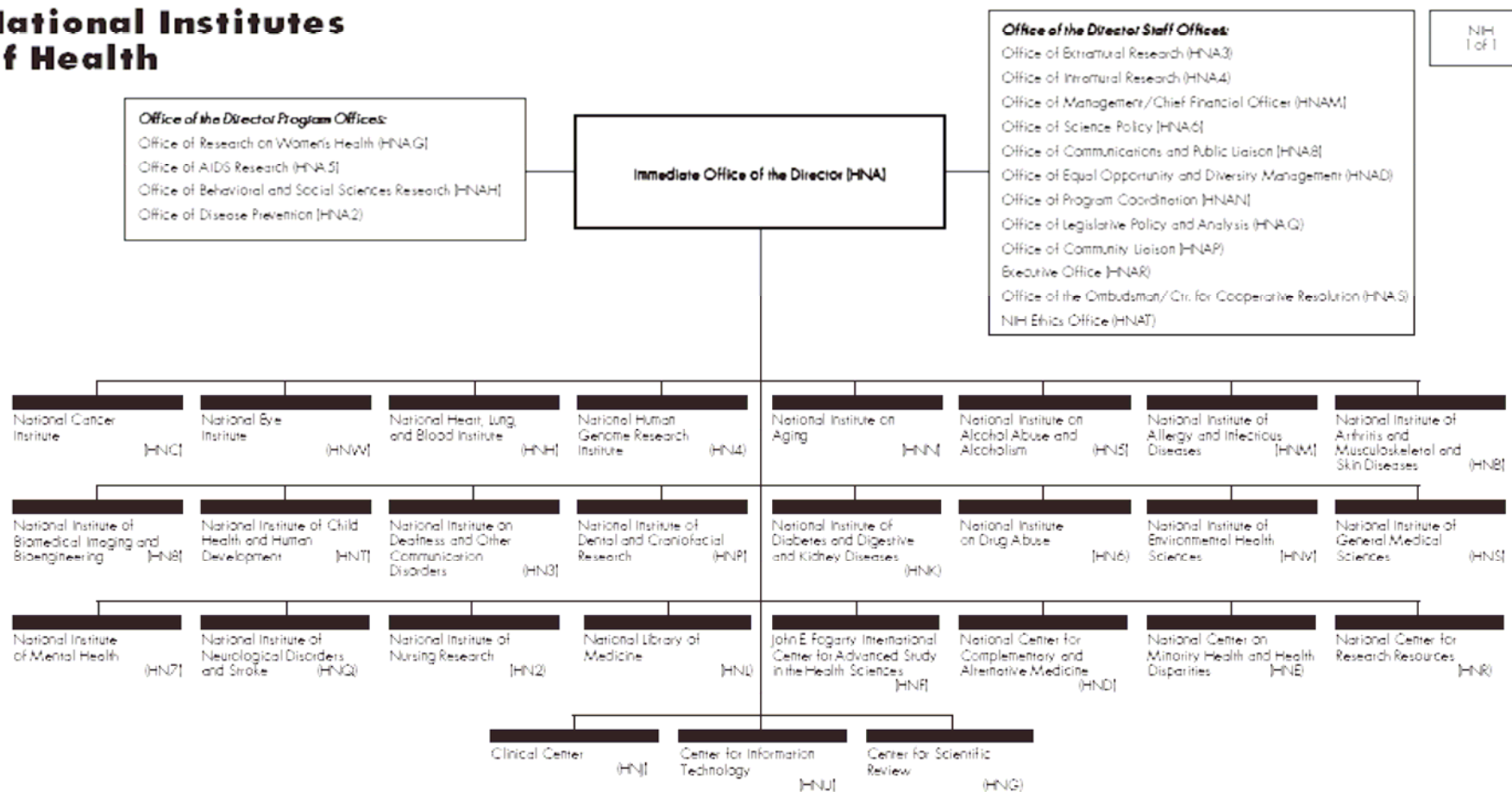
**Norka Ruiz Bravo, PhD
Deputy Director for Extramural Research
National Institutes of Health**



Setting Research Priorities: Every Voice Counts



National Institutes of Health

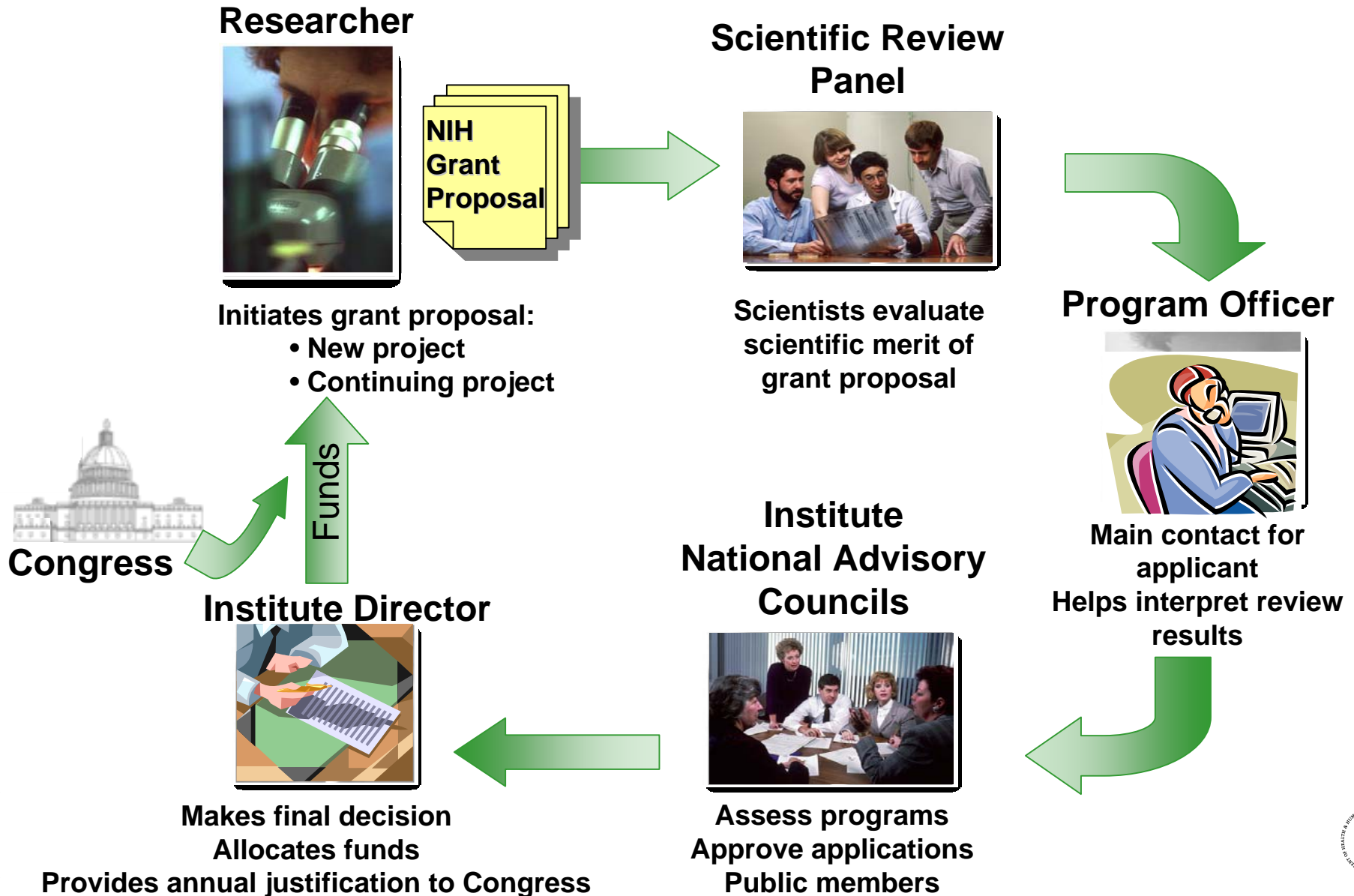


The Mission of the National Institutes of Health is science in pursuit of knowledge to improve human health. This means pursuing science to expand fundamental knowledge about the nature and behavior of living systems; to apply that knowledge to extend the health of human lives; and to reduce the burdens resulting from disease and disability.

The National Institutes of Health seeks to accomplish its mission by:

- Fostering fundamental discoveries, innovative research, and their applications in order to advance the Nation's capacity to protect and improve health;
- Developing, maintaining, and renewing the human and physical resources that are vital to ensure the Nation's capability to prevent disease, improve health, and enhance quality of life;
- Expanding the knowledge base in biomedical, behavioral, and associated sciences order to enhance America's economic well-being and ensure a continued high return on the public investment in research; and
- Exemplifying and promoting the highest level of scientific integrity, public accountability, and social responsibility in the conduct of science.

The Funding Process



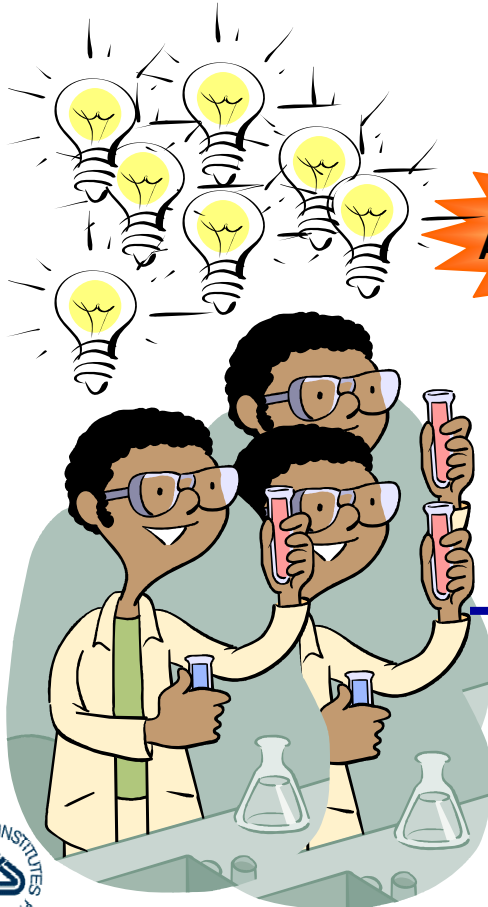
The Role of OER

Office of Extramural Research (OER) The NIH Extramural Nexus

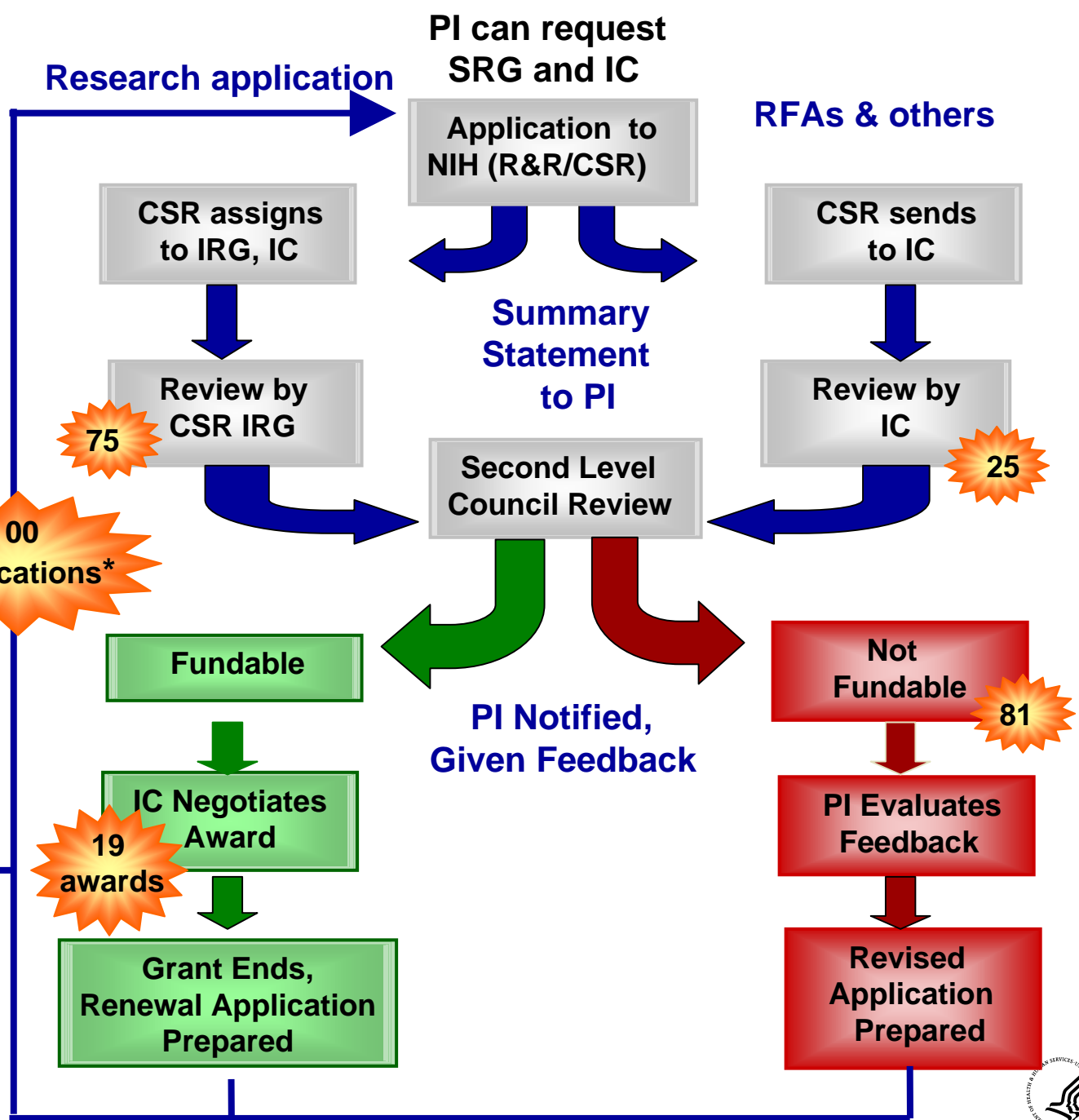


Where grants policy, program coordination, compliance and electronic research administration converge.

NIH Application Process Overview



NIH actually receives >80,000 applications/yr



How Can COPR Help?

Identify Best Practices

- Research Participant Recruitment
- Role of families/caregivers in individual studies
- Insight on ethical issues
- Sensitive and ethical methodologies for particular patient communities

Collaborate with NIH to develop guidance for

- NIH Staff
- Applicants
- Participants

Example: Research Participant Recruitment Strategies

- How can scientists engage research participants from special populations?
 - Vulnerable Participants: e.g., Children
 - Under-served Participants: e.g., People from minority ethnic, language, disease groups
- How can scientists effectively communicate the value and risks of the study?

Potential Impacts of COPR Input

- **Better applications**
- **Better clinical research**
- **Better and faster transition from basic science to clinical care**