

Cushing's Syndrome

National Endocrine and Metabolic Diseases Information Service



U.S. Department
of Health and
Human Services

NATIONAL
INSTITUTES
OF HEALTH

NIDDK
NATIONAL INSTITUTE OF
DIABETES AND DIGESTIVE
AND KIDNEY DISEASES

What is Cushing's syndrome?

Cushing's syndrome is a hormonal disorder caused by prolonged exposure of the body's tissues to high levels of the hormone cortisol. Sometimes called hypercortisolism, Cushing's syndrome is relatively rare and most commonly affects adults aged 20 to 50. People who are obese and have type 2 diabetes, along with poorly controlled blood glucose—also called blood sugar—and high blood pressure, have an increased risk of developing the disorder.

What are the signs and symptoms of Cushing's syndrome?

Signs and symptoms of Cushing's syndrome vary, but most people with the disorder have upper body obesity, a rounded face, increased fat around the neck, and relatively slender arms and legs. Children tend to be obese with slowed growth rates.

Other signs appear in the skin, which becomes fragile and thin, bruises easily, and heals poorly. Purple or pink stretch marks may appear on the abdomen, thighs, buttocks, arms, and breasts. The bones are weakened, and routine activities such as bending, lifting, or rising from a chair may lead to backaches and rib or spinal column fractures.

Women with Cushing's syndrome usually have excess hair growth on their face, neck, chest, abdomen, and thighs. Their menstrual periods may become irregular or stop. Men may have decreased fertility with diminished or absent desire for sex and, sometimes, erectile dysfunction.

Other common signs and symptoms include

- severe fatigue
- weak muscles
- high blood pressure
- high blood glucose
- increased thirst and urination
- irritability, anxiety, or depression
- a fatty hump between the shoulders

Sometimes other conditions have many of the same signs as Cushing's syndrome, even though people with these disorders do not have abnormally elevated cortisol levels. For example, polycystic ovary syndrome can cause menstrual disturbances, weight gain beginning in adolescence, excess hair growth, and impaired insulin action and diabetes. Metabolic syndrome—a combination of problems that includes excess weight around the waist, high blood pressure, abnormal levels of cholesterol and triglycerides in the blood, and insulin resistance—also mimics the symptoms of Cushing's syndrome.

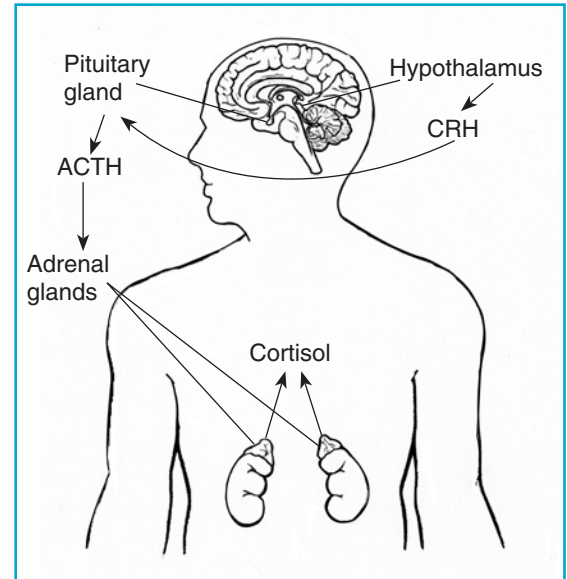
What causes Cushing's syndrome?

Cushing's syndrome occurs when the body's tissues are exposed to high levels of cortisol for too long. Many people develop Cushing's syndrome because they take glucocorticoids—steroid hormones that are chemically similar to naturally produced cortisol—such as prednisone for asthma, rheumatoid arthritis, lupus, and other inflammatory diseases. Glucocorticoids are also used to suppress the immune system after transplantation to keep the body from rejecting the new organ or tissue.

Other people develop Cushing's syndrome because their bodies produce too much cortisol. Normally, the production of cortisol follows a precise chain of events. First, the hypothalamus, a part of the brain about the size of a small sugar cube, sends corticotropin-releasing hormone (CRH) to the pituitary gland. CRH causes the pituitary to secrete adrenocorticotropin hormone (ACTH), which stimulates the adrenal glands. When the adrenals, which are located just above the kidneys, receive the ACTH, they respond by releasing cortisol into the bloodstream.

Cortisol performs vital tasks in the body including

- helping maintain blood pressure and cardiovascular function
- reducing the immune system's inflammatory response
- balancing the effects of insulin, which breaks down glucose for energy
- regulating the metabolism of proteins, carbohydrates, and fats



The hypothalamus sends CRH to the pituitary, which responds by secreting ACTH. ACTH then causes the adrenals to release cortisol into the bloodstream.

One of cortisol's most important jobs is to help the body respond to stress. For this reason, women in their last 3 months of pregnancy and highly trained athletes normally have high levels of the hormone. People suffering from depression, alcoholism, malnutrition, or panic disorders also have increased cortisol levels.

When the amount of cortisol in the blood is adequate, the hypothalamus and pituitary release less CRH and ACTH. This process ensures the amount of cortisol released by the adrenal glands is precisely balanced to meet the body's daily needs. However, if something goes wrong with the adrenals or the regulating switches in the pituitary gland or hypothalamus, cortisol production can go awry.

Pituitary Adenomas

Pituitary adenomas cause 70 percent of Cushing's syndrome cases,¹ excluding those caused by glucocorticoid use. These benign, or noncancerous, tumors of the pituitary gland secrete extra ACTH. Most people with the disorder have a single adenoma. This form of the syndrome, known as Cushing's disease, affects women five times more often than men.

Ectopic ACTH Syndrome

Some benign or, more often, cancerous tumors that arise outside the pituitary can produce ACTH. This condition is known as ectopic ACTH syndrome. Lung tumors cause more than half of these cases, and men are affected three times more often than women. The most common forms of ACTH-producing tumors are small cell lung cancer, which accounts for about 13 percent of all lung cancer cases,² and carcinoid tumors—small, slow-growing tumors that arise from hormone-producing cells in various parts of the body. Other less common types of tumors that can produce ACTH are thymomas, pancreatic islet cell tumors, and medullary carcinomas of the thyroid.

Adrenal Tumors

In rare cases, an abnormality of the adrenal glands, most often an adrenal tumor, causes Cushing's syndrome. Adrenal tumors are four to five times more common in women than men, and the average age of onset is about 40. Most of these cases involve noncancerous tumors of adrenal tissue called adrenal adenomas, which release excess cortisol into the blood.

Adrenocortical carcinomas—adrenal cancers—are the least common cause of Cushing's syndrome. With adrenocortical carcinomas, cancer cells secrete excess levels of several adrenocortical hormones, including cortisol and adrenal androgens, a type of male hormone. Adrenocortical carcinomas usually cause very high hormone levels and rapid development of symptoms.

Familial Cushing's Syndrome

Most cases of Cushing's syndrome are not inherited. Rarely, however, Cushing's syndrome results from an inherited tendency to develop tumors of one or more endocrine glands. Endocrine glands release hormones into the bloodstream. With primary pigmented micronodular adrenal disease, children or young adults develop small cortisol-producing tumors of the adrenal glands. With multiple endocrine neoplasia type 1 (MEN1), hormone-secreting tumors of the parathyroid glands, pancreas, and pituitary develop; Cushing's syndrome in MEN1 may be due to pituitary, ectopic, or adrenal tumors.

¹Nieman LK, Ilias I. Evaluation and treatment of Cushing's syndrome. *The Journal of American Medicine*. 2005;118(12):1340–1346.

²Govindan R, Page N, Morgensztern D, et al. Changing epidemiology of small-cell lung cancer in the United States over the last 30 years: analysis of the surveillance, epidemiologic, and end results database. *Journal of Clinical Oncology*. 2006;24:4539–4544.

How is Cushing's syndrome diagnosed?

Diagnosis is based on a review of a person's medical history, a physical examination, and laboratory tests. X rays of the adrenal or pituitary glands can be useful in locating tumors.

Tests to Diagnose Cushing's Syndrome

No single lab test is perfect and usually several are needed. The three most common tests used to diagnose Cushing's syndrome are the 24-hour urinary free cortisol test, measurement of midnight plasma cortisol or late-night salivary cortisol, and the low-dose dexamethasone suppression test. Another test, the dexamethasone-corticotropin-releasing hormone test, may be needed to distinguish Cushing's syndrome from other causes of excess cortisol.

- **24-hour urinary free cortisol level.** In this test, a person's urine is collected several times over a 24-hour period and tested for cortisol. Levels higher than 50 to 100 micrograms a day for an adult suggest Cushing's syndrome. The normal upper limit varies in different laboratories, depending on which measurement technique is used.
- **Midnight plasma cortisol and late-night salivary cortisol measurements.** The midnight plasma cortisol test measures cortisol concentrations in the blood. Cortisol production is normally suppressed at night, but in Cushing's syndrome, this suppression doesn't occur. If the cortisol level is more than 50 nanomoles per liter (nmol/L), Cushing's syndrome is suspected. The test generally requires a 48-hour hospital stay to avoid falsely elevated cortisol levels due to stress.

However, a late-night or bedtime saliva sample can be obtained at home, then tested to determine the cortisol level. Diagnostic ranges vary, depending on the measurement technique used.

- **Low-dose dexamethasone suppression test (LDDST).** In the LDDST, a person is given a low dose of dexamethasone, a synthetic glucocorticoid, by mouth every 6 hours for 2 days. Urine is collected before dexamethasone is administered and several times on each day of the test. A modified LDDST uses a one-time overnight dose.

Cortisol and other glucocorticoids signal the pituitary to release less ACTH, so the normal response after taking dexamethasone is a drop in blood and urine cortisol levels. If cortisol levels do not drop, Cushing's syndrome is suspected.

The LDDST may not show a drop in cortisol levels in people with depression, alcoholism, high estrogen levels, acute illness, or stress, falsely indicating Cushing's syndrome. On the other hand, drugs such as phenytoin and phenobarbital may cause cortisol levels to drop, falsely indicating that Cushing's is not present in people who actually have the syndrome. For this reason, physicians usually advise their patients to stop taking these drugs at least 1 week before the test.

- **Dexamethasone-corticotropin-releasing hormone (CRH) test.** Some people have high cortisol levels but do not develop the progressive effects of Cushing's syndrome, such as muscle weakness, fractures, and thinning of the skin. These people may have pseudo-Cushing's syndrome, a condition sometimes found in people who have depression or anxiety disorders, drink excess alcohol, have poorly controlled diabetes, or are severely obese. Pseudo-Cushing's does not have the same long-term effects on health as Cushing's syndrome and does not require treatment directed at the endocrine glands.

The dexamethasone-CRH test rapidly distinguishes pseudo-Cushing's from mild cases of Cushing's. This test combines the LDDST and a CRH stimulation test. In the CRH stimulation test, an injection of CRH causes the pituitary to secrete ACTH. Pretreatment with dexamethasone prevents CRH from causing an increase in cortisol in people with pseudo-Cushing's. Elevations of cortisol during this test suggest Cushing's syndrome.

Tests to Find the Cause of Cushing's Syndrome

Once Cushing's syndrome has been diagnosed, other tests are used to find the exact location of the abnormality that leads to excess cortisol production. The choice of test depends, in part, on the preference of the endocrinologist or the center where the test is performed.

- **CRH stimulation test.** The CRH test, without pretreatment with dexamethasone, helps separate people with pituitary adenomas from those with ectopic ACTH syndrome or adrenal tumors. As a result of the CRH injection, people with pituitary adenomas usually experience a rise in blood levels of ACTH and cortisol because CRH acts directly on the pituitary. This response is rarely seen in people with ectopic ACTH syndrome and practically never in those with adrenal tumors.
- **High-dose dexamethasone suppression test (HDDST).** The HDDST is the same as the LDDST, except it uses higher doses of dexamethasone. This test helps separate people with excess production of ACTH due to pituitary adenomas from those with ectopic ACTH-producing tumors. High doses of dexamethasone usually suppress cortisol levels in people with pituitary adenomas but not in those with ectopic ACTH-producing tumors.

- **Radiologic imaging: direct visualization of the endocrine glands.** Imaging tests reveal the size and shape of the pituitary and adrenal glands and help determine if a tumor is present. The most common imaging tests are the computerized tomography (CT) scan and magnetic resonance imaging (MRI). A CT scan produces a series of x-ray pictures giving a cross-sectional image of a body part. MRI also produces images of internal organs but without exposing patients to ionizing radiation.

Imaging procedures are used to find a tumor after a diagnosis has been made. Imaging is not used to make the diagnosis of Cushing's syndrome because benign tumors are commonly found in the pituitary and adrenal glands. These tumors, sometimes called incidentalomas, do not produce hormones in quantities that are harmful. They are not removed unless blood tests show they are a cause of symptoms or they are unusually large. Conversely, pituitary tumors may not be detectable by imaging in almost half of people who ultimately need pituitary surgery for Cushing's syndrome.

- **Petrosal sinus sampling.** This test is not always required, but in many cases, it is the best way to distinguish pituitary from ectopic causes of Cushing's syndrome. Samples of blood are drawn from the petrosal sinuses—veins that drain the pituitary—by inserting tiny tubes through a vein in the upper thigh or groin region. A local anesthetic and mild sedation are given, and x rays are

taken to confirm the correct position of the tubes. Often CRH, the hormone that causes the pituitary to release ACTH, is given during this test to improve diagnostic accuracy.

Levels of ACTH in the petrosal sinuses are measured and compared with ACTH levels in a forearm vein. Higher levels of ACTH in the sinuses than in the forearm vein indicate a pituitary adenoma. Similar levels of ACTH in the petrosal sinuses and the forearm suggest ectopic ACTH syndrome.

How is Cushing's syndrome treated?

Treatment depends on the specific reason for excess cortisol and may include surgery, radiation, chemotherapy, or the use of cortisol-inhibiting drugs. If the cause is long-term use of glucocorticoid hormones to treat another disorder, the doctor will gradually reduce the dosage to the lowest dose adequate for control of that disorder. Once control is established, the daily dose of glucocorticoid hormones may be doubled and given on alternate days to lessen side effects. In some cases, noncorticosteroid drugs can be prescribed.

Pituitary Adenomas

Several therapies are available to treat the ACTH-secreting pituitary adenomas of Cushing's disease. The most widely used treatment is surgical removal of the tumor, known as transsphenoidal adenomectomy. Using a special microscope and fine instruments, the surgeon approaches the pituitary gland through a nostril or an opening made below the upper lip. Because this procedure is extremely delicate, patients are often referred to centers specializing in

this type of surgery. The success, or cure, rate of this procedure is more than 80 percent when performed by a surgeon with extensive experience. If surgery fails or only produces a temporary cure, surgery can be repeated, often with good results.

After curative pituitary surgery, the production of ACTH drops two levels below normal. This drop is natural and temporary, and patients are given a synthetic form of cortisol such as hydrocortisone or prednisone to compensate. Most people can stop this replacement therapy in less than 1 or 2 years, but some must be on it for life.

If transsphenoidal surgery fails or a patient is not a suitable candidate for surgery, radiation therapy is another possible treatment. Radiation to the pituitary gland is given over a 6-week period, with improvement occurring in 40 to 50 percent of adults and up to 85 percent of children. Another technique, called stereotactic radiosurgery or gamma knife radiation, can be given in a single high-dose treatment. It may take several months or years before people feel better from radiation treatment alone. Combining radiation with cortisol-inhibiting drugs can help speed recovery.

Drugs used alone or in combination to control the production of excess cortisol are ketoconazole, mitotane, aminoglutethimide,

and metyrapone. Each drug has its own side effects that doctors consider when prescribing medical therapy for individual patients.

Ectopic ACTH Syndrome

To cure the overproduction of cortisol caused by ectopic ACTH syndrome, all of the cancerous tissue that is secreting ACTH must be eliminated. The choice of cancer treatment—surgery, radiation, chemotherapy, immunotherapy, or a combination of these treatments—depends on the type of cancer and how far it has spread. Because ACTH-secreting tumors may be small or widespread at the time of diagnosis, making them difficult to locate and treat directly, cortisol-inhibiting drugs are an important part of treatment. In some cases, if other treatments fail, surgical removal of the adrenal glands, called bilateral adrenalectomy, may replace drug therapy.

Adrenal Tumors

Surgery is the mainstay of treatment for benign and cancerous tumors of the adrenal glands. Primary pigmented micronodular adrenal disease and the inherited Carney complex—primary tumors of the heart that can lead to endocrine overactivity and Cushing's syndrome—require surgical removal of the adrenal glands.

Points to Remember

- Cushing's syndrome is a disorder caused by prolonged exposure of the body's tissues to high levels of the hormone cortisol.
- Typical signs and symptoms of Cushing's syndrome include upper body obesity, a rounded face, skin that bruises easily and heals poorly, weakened bones, excess body hair growth and menstrual irregularities in women, and decreased fertility in men.
- Cushing's syndrome is caused by exposure to glucocorticoids, which are used to treat inflammatory diseases, or by the body's overproduction of cortisol, most often due to tumors of the pituitary gland or lung.
- Several tests are usually needed to diagnosis Cushing's syndrome, including urine, blood, and saliva tests. Other tests help find the cause of the syndrome.
- Treatment depends on the specific reason for excess cortisol and may include surgery, radiation, chemotherapy, or the use of cortisol-inhibiting drugs.

Hope through Research

Several components of the National Institutes of Health (NIH) conduct and support research on Cushing's syndrome and other disorders of the endocrine system, including the National Institute of Diabetes and Digestive and Kidney Diseases, the National Institute of Child Health and Human Development (NICHD), the National Institute of Neurological Disorders and Stroke, the National Cancer Institute, and the National Center for Research Resources.

NIH-supported scientists are conducting intensive research into the normal and abnormal function of the major endocrine glands and the many hormones of the endocrine system. Researchers continue to study the effects of excess cortisol, including its effect on brain structure and function. To refine the diagnostic process, studies are under way to assess the accuracy of existing screening tests and the effectiveness of new imaging techniques to evaluate patients with ectopic ACTH syndrome. Researchers are also investigating jugular vein sampling as a less invasive alternative to petrosal sinus sampling. Research into treatment options includes study of a new drug to treat the symptoms of Cushing's syndrome caused by ectopic ACTH secretion.

Studies are under way to understand the causes of benign endocrine tumor formation, such as those that cause most cases of Cushing's syndrome. In a few pituitary adenomas, specific gene defects have been identified and may provide important clues to understanding tumor formation. Endocrine factors may also play a role. Increasing evidence suggests that tumor formation is a multistep process. Understanding the basis of Cushing's syndrome will yield new approaches to therapy.

The NIH supports research related to Cushing's syndrome at medical centers throughout the United States. Scientists are also treating patients with Cushing's syndrome at the NIH Clinical Center in Bethesda, MD. Physicians who are interested in referring an adult patient may contact Lynnette Nieman, M.D., at NICHD, 10 Center Drive, Room 1-3140, Bethesda, MD 20892-1109, or by phone at 301-496-8935. Physicians interested in referring a child or adolescent may contact Constantine Stratakis, M.D., D.Sc., at NICHD, 10 Center Drive, Room 1-3330, Bethesda, MD 20892-1103, or by phone at 301-402-1998.

For More Information

The following articles about Cushing's syndrome can be found in medical libraries, some college and university libraries, and through interlibrary loan in most public libraries.

Labour M, Arzt E, Stalla GK, Páez-Pereda M. New perspectives in the treatment of Cushing's syndrome. *Current Drug Targets—Immune, Endocrine & Metabolic Disorders*. 2004;4:335-342.

Lin D, Loughlin K. Diagnosis and management of surgical adrenal diseases. *Urology*. 2005;66:476-483.

Newell-Price J, Bertagna X, Grossman A, Nieman L. Cushing's syndrome. *The Lancet*. 2006;367:1605-1617.

Nieman L, Ilias I. Evaluation and treatment of Cushing's syndrome. *The American Journal of Medicine*. 2005;118:1340-1346.

The following organizations may also be able to assist with certain types of information:

American Association of Neurological Surgeons

5550 Meadowbrook Drive
Rolling Meadows, IL 60008
Phone: 1-888-566-AANS (2267)
or 847-378-0500

Email: info@AANS.org

Internet: www.NeurosurgeryToday.org

To locate a board-certified neurosurgeon:
www.neurosurgerytoday.org/findaneuro

Cushing's Support and Research Foundation, Inc.

65 East India Row, Suite 22B
Boston, MA 02110
Phone and Fax: 617-723-3674

Email: cushinfo@csrf.net

Internet: www.CSRF.net

Pituitary Network Association

P.O. Box 1958
Thousand Oaks, CA 91358
Phone: 805-499-9973

Fax: 805-480-0633

Email: PNA@pituitary.org

Internet: www.pituitary.org

You may also find additional information about this topic using the following databases:

The NIDDK Reference Collection is a collection of thousands of materials produced for patients and health care professionals, including fact sheets, brochures, and audiovisual materials. Visit www.catalog.niddk.nih.gov/resources.

MedlinePlus brings together a wealth of information from the National Library of Medicine, the National Institutes of Health, and other government agencies and health-related organizations. MedlinePlus offers easy access to medical journal articles, a medical dictionary and medical encyclopedia, health information in Spanish, hospital and physician directories, drug and supplement lists, interactive patient tutorials, links to hundreds of clinical trials, and the latest health news. Visit www.medlineplus.gov.

The U.S. Government does not endorse or favor any specific commercial product or company. Trade, proprietary, or company names appearing in this document are used only because they are considered necessary in the context of the information provided. If a product is not mentioned, the omission does not mean or imply that the product is unsatisfactory.

This publication may contain information about medications used to treat a health condition. When this publication was prepared, the NIDDK included the most current information available. Occasionally, new information about medication is released. For updates or for questions about any medications, please contact the U.S. Food and Drug Administration at 1-888-INFO-FDA (463-6332), a toll-free call, or visit their website at www.fda.gov. Consult your doctor for more information.

National Endocrine and Metabolic Diseases Information Service

6 Information Way
Bethesda, MD 20892-3569
Phone: 1-888-828-0904
Fax: 703-738-4929
Email: endoandmeta@info.niddk.nih.gov
Internet: www.endocrine.niddk.nih.gov

The National Endocrine and Metabolic Diseases Information Service is an information dissemination service of the National Institute of Diabetes and Digestive and Kidney Diseases (NIDDK). The NIDDK is part of the National Institutes of Health (NIH), which is part of the U.S. Department of Health and Human Services.

The NIDDK conducts and supports biomedical research. As a public service, the NIDDK has established information services to increase knowledge and understanding about health and disease among patients, health care professionals, and the public.

Publications produced by the NIDDK are carefully reviewed by both NIDDK scientists and outside experts. This publication was reviewed by George Chrousos, M.D., *Eunice Kennedy Shriver* National Institute of Child Health and Human Development, NIH.

This publication is not copyrighted. The Clearinghouse encourages users of this fact sheet to duplicate and distribute as many copies as desired.

This fact sheet is also available at www.endocrine.niddk.nih.gov.



U.S. DEPARTMENT OF HEALTH
AND HUMAN SERVICES
National Institutes of Health

NIH Publication No. 08-3007
July 2008