

Program Assessment Rating Tool (PART)



PART REFRESHER TRAINING

Office of Management and Budget

February 2007

Welcome

- Purpose of Training
- How the session will be organized
- Your Trainers
- All information is provided in the PART Guidance at www.omb.gov/part

Overview

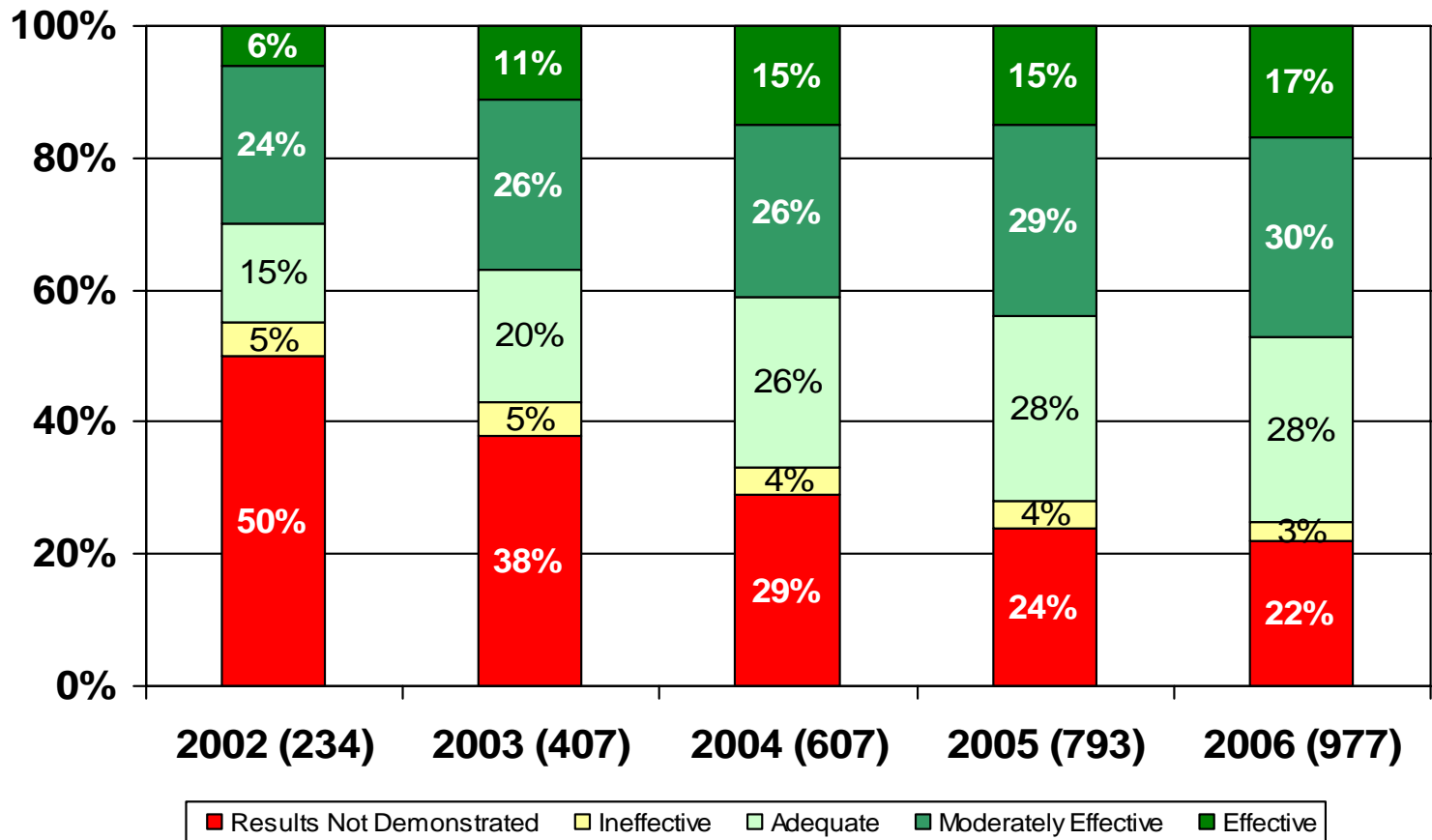
- Where We are Today
- 2007 PART Schedule
- PARTWeb & ExpectMore.gov Changes
- PART Guidance Changes
 - Program Reassessments
 - Past Guidance Changes
 - Efficiency Measure Guidance Enhancements
- Rigorous Evaluation Refresher
- Suggestions on Completing a PART
- Questions & Answers

2007 PART Schedule (p. vii)

- Agencies Complete PART Drafts by March 30th.
- Consistency Check and Review of Performance Measures – April 30th to May 4th.
- Appeals due by May 25th.
- Complete PART Summaries & Improvement Plans for ExpectMore.gov by July 9th.
- Data Entry Locked on August 3rd.
- PARTs published on ExpectMore.gov in mid-August.

Where We Are Today

Distribution of Cumulative Ratings 2002 - 2006





PARTWeb Answers Entry Screen

Is the program purpose clear? - Microsoft Internet Explorer

File Edit View Favorites Tools Help

Back Forward Stop Home Search Favorites Refresh Print

Address <https://max.omb.gov/app/part/program/assessment/question-answers/answer-question?pid=1722&aid=2839&aaid=134750>

 OFFICE OF MANAGEMENT AND BUDGET 

PARTWeb v3.0.4

Search for a Program in PARTWeb

Register New Program Assessment in PARTweb

ExpectMore.gov Batch Report

Nuclear Physics

- Edit Program
- User Permissions
- Create New Assessment
- 2005 Update Assessment
 - Edit Assessment
 - Fall Updates
 - PART Summary
 - Funding Accounts
 - Question Answers
 - ▶ Answer Question 1.1
 - Question Weights
 - Performance Measures
 - Follow-up Actions

Administration

- Users
 - Import Program
- Change Password
- PARTWeb How-to's
- Contact Us
- Logout

Exec Office of the Pre

User:
Program: **Nuclear Physics (10000114)**
Assessment: **2005 Update**

Is the program purpose clear?

Previous versions:
None.

DIRECT FEDERAL PROGRAM QUESTION 1.1

Answer ▶ Yes No

Explanation ▶
The mission of the Nuclear Physics (NP) program is to foster fundamental research in nuclear physics that will provide new insights and advance our knowledge on the nature of matter and energy and develop the scientific knowledge, technologies and trained manpower that are needed to underpin DOE missions.

Evidence ▶
FY04 Budget Request (www.mbe.doe.gov/budget/04budget/index.htm). Public Law 95-91 that established the Department of Energy (DOE). The NP Mission has been validated by the Nuclear Science Advisory Committee (NSAC).

SAVE CANCEL

1.1 Is the program purpose clear?

Purpose of the question: to determine whether the program has a focused and well-defined mission.

Elements of a Yes answer: a Yes answer would require a consensus of program purpose among interested parties (e.g., Congress, Administration, public) and a clear and unambiguous mission. Considerations can include whether the program purpose can be stated succinctly. A No answer would be appropriate if the program has multiple conflicting purposes.


PARTWeb Performance Measures Entry Screen

Prison Construction 2005 Update Assessment - Microsoft Internet Explorer


File Edit View Favorites Tools Help

Back Search Favorites

Address: https://max.omb.gov/app/part/program/assessment/measures?aid=2592&pid=363



OFFICE OF
MANAGEMENT AND BUDGET



PARTWeb v3.0.7

- Search for a Program in PARTWeb
- Register New Program Assessment in PARTweb
- ExpectMore.gov Batch Report
- Prison Construction
 - Edit Program
 - User Permissions
 - Create New Assessment
 - 2005 Update Assessment
 - Edit Assessment
 - Abbreviated Reassessment
 - Fall Updates
 - PART Summary
 - Funding Accounts
 - Question Answers
 - Question Weights
 - ▶ Performance Measures
 - Follow-up Actions
- Reports
 - Rating Summary Report
 - Follow-up Actions Report
 - Measures Report
- Administration
 - Users
 - Import Program
- Change Password
- PARTWeb How-to's
- Contact Us
- Logout

User: **HURBAN, JAMESOMBADMIN**
 Program: **Prison Construction (10003803)**
 Assessment: **2005 Update**

Exec Office of the President

Prison Construction 2005 Update Assessment

PRISON CONSTRUCTION 2005 PERFORMANCE MEASURES

[Add Performance Measure](#)

Term	Type	Text	Edit Delete																																													
Long-term	Efficiency	Construction Cost per bed for Medium Security Facilities.	Edit Delete																																													
		<table border="1" style="width: 100%; border-collapse: collapse;"> <thead> <tr> <th>Year</th> <th>Target</th> <th>Actual</th> <th>State</th> </tr> </thead> <tbody> <tr><td>2004</td><td>Baseline</td><td>\$74,513</td><td></td></tr> <tr><td>2005</td><td>\$76,078</td><td>n/a</td><td></td></tr> <tr><td>2006</td><td>\$81,300</td><td></td><td></td></tr> <tr><td>2007</td><td>\$79,307</td><td></td><td></td></tr> <tr><td>2008</td><td>\$84,750</td><td></td><td></td></tr> <tr><td>2009</td><td>\$86,530</td><td></td><td></td></tr> <tr><td>2010</td><td>\$88,347</td><td></td><td></td></tr> <tr><td>2011</td><td>\$90,203</td><td></td><td></td></tr> <tr><td>2012</td><td>\$92,097</td><td></td><td></td></tr> <tr><td>2013</td><td>\$94,031</td><td></td><td></td></tr> </tbody> </table>		Year	Target	Actual	State	2004	Baseline	\$74,513		2005	\$76,078	n/a		2006	\$81,300			2007	\$79,307			2008	\$84,750			2009	\$86,530			2010	\$88,347			2011	\$90,203			2012	\$92,097			2013	\$94,031			
		Year	Target	Actual	State																																											
		2004	Baseline	\$74,513																																												
		2005	\$76,078	n/a																																												
		2006	\$81,300																																													
		2007	\$79,307																																													
		2008	\$84,750																																													
		2009	\$86,530																																													
		2010	\$88,347																																													
		2011	\$90,203																																													
		2012	\$92,097																																													
		2013	\$94,031																																													
Long-term	Efficiency	Percent of Modernization and Repair Projects completed on time.	Edit Delete																																													
		<table border="1" style="width: 100%; border-collapse: collapse;"> <thead> <tr> <th>Year</th> <th>Target</th> <th>Actual</th> <th>State</th> </tr> </thead> <tbody> <tr><td>2004</td><td>Baseline</td><td>41%</td><td></td></tr> <tr><td>2005</td><td>65%</td><td>90%</td><td></td></tr> <tr><td>2006</td><td>75%</td><td></td><td></td></tr> <tr><td>2007</td><td>85%</td><td></td><td></td></tr> <tr><td>2008</td><td>95%</td><td></td><td></td></tr> <tr><td>2009</td><td>95%</td><td></td><td></td></tr> <tr><td>2010</td><td>95%</td><td></td><td></td></tr> <tr><td>2011</td><td>95%</td><td></td><td></td></tr> <tr><td>2012</td><td>95%</td><td></td><td></td></tr> <tr><td>2013</td><td>95%</td><td></td><td></td></tr> </tbody> </table>		Year	Target	Actual	State	2004	Baseline	41%		2005	65%	90%		2006	75%			2007	85%			2008	95%			2009	95%			2010	95%			2011	95%			2012	95%			2013	95%			
		Year	Target	Actual	State																																											
		2004	Baseline	41%																																												
		2005	65%	90%																																												
		2006	75%																																													
		2007	85%																																													
		2008	95%																																													
		2009	95%																																													
		2010	95%																																													
		2011	95%																																													
		2012	95%																																													
		2013	95%																																													
Annual	Outcome	Critical Systems Equipment Replacements in Accordance with Industry Standards.	Edit Delete																																													
		<table border="1" style="width: 100%; border-collapse: collapse;"> <thead> <tr> <th>Year</th> <th>Target</th> <th>Actual</th> <th>State</th> </tr> </thead> <tbody> <tr><td>2004</td><td>Baseline</td><td>15%</td><td></td></tr> <tr><td>2005</td><td>20%</td><td>27%</td><td></td></tr> <tr><td>2006</td><td>30%</td><td></td><td></td></tr> <tr><td>2007</td><td>40%</td><td></td><td></td></tr> <tr><td>2008</td><td>50%</td><td></td><td></td></tr> <tr><td>2009</td><td>70%</td><td></td><td></td></tr> </tbody> </table>		Year	Target	Actual	State	2004	Baseline	15%		2005	20%	27%		2006	30%			2007	40%			2008	50%			2009	70%																			
		Year	Target	Actual	State																																											
		2004	Baseline	15%																																												
		2005	20%	27%																																												
		2006	30%																																													
		2007	40%																																													
		2008	50%																																													
2009	70%																																															

ExpectMore.gov Summary

[Home](#)[About Us](#)[Contact](#)[What's New](#)

ExpectMore.gov

EXPECT FEDERAL PROGRAMS TO PERFORM WELL, AND BETTER EVERY YEAR.

Getty Images

[Show Me Programs](#)

PROGRAM

[View Assessment Details](#)

RATING

[What This Rating Means](#)

IMPROVEMENT PLAN

[About Improvement Plans](#)

PROGRAM ASSESSMENT

Early Reading First

The Early Reading First (ERF) program is designed to implement research-based early literacy programs in already existing preschool programs to enhance the early language, literacy, and prereading development of preschool-aged children.

PERFORMING

☆☆ Moderately Effective

- **The program addresses a compelling need.** Studies show that a high percentage of children from low-income families attend preschools that often fail to provide the language, cognitive, and early reading instruction and activities needed. The Early Reading First program is intended to address the gaps in quality between low-income children and their peers of higher socioeconomic status.
- **The program is reaching its original performance targets.** The percentage of preschool-aged children participating in ERF programs who demonstrated age-appropriate oral language skills increased from 56 percent in 2004 to 67.9 percent in 2005.
- **The Department of Education has recently established new performance measures in the areas of significant literacy gains and program efficiency.**

We are taking the following actions to improve the performance of the program:

- Collecting data for the new measures: significant gains in early literacy skills, and the cost per preschool-aged child participating in Early Reading First programs who achieves significant gains.
- Implementing a measure of kindergarten readiness by requiring entities that receive a grant for a second three-year period to collect former participants' academic achievement in kindergarten.
- Updating the recent performance data on the program's website as they become available.

LEARN MORE

- [View Similar Programs.](#)
- [How all Federal programs are assessed.](#)
- [Learn more about Early Reading First.](#)

2007 Guidance Changes (p. vi)

- **No abbreviated reassessments.**
- **Efficiency measure definition broadened and guidance enhanced.**

Past Guidance Changes

- **Questions 1.4 (design flaws) and 1.5 (targeting resources) distinction. Clarification:**
 - **The former addresses alternative mechanisms to achieve a program's goals, while the latter asks whether resources under the current program design are oriented toward efficiently achievement of the program's purpose.**
 - **One design flaw should not be the reason for No on both Question 1.4 and 1.5.**

Past Guidance Changes

- Yes for Questions 2.1, 2.3, and 3.4 require performance measures to be listed in the PART.
- Yes to Question 3.3 on timely obligation of funds requires accurate reporting of program awards (e.g., in the Federal Assistance Awards Data System, the Federal Procurement Data System—Next Generation, etc.)

Past Guidance Changes

- **Capital Assets Programs:** Includes criteria for analysis of alternatives (Question 2.CA1).
- **Regulatory-based program-specific questions streamlined:**
 - Question 3.RG3 on review of regulations for consistency was deleted.

Efficiency Measures

(pp.9-11; Questions 3.4 and 4.3)

- **Reflect economical and effective acquisition, utilization, and management of resources to achieve program outcomes or produce program outputs.**
- **Can also reflect improved design, creation, and delivery of goods and services.**

Efficiency Measures (pp.9-11)

- **Outcome efficiency**
 - Preferred type of performance measure that captures improvement in efficiency with respect to a program's outcomes.
- **Output efficiency**
 - Performance measure that captures improvement in efficiency with respect to a program's outputs.
- **Input productivity**
 - Ratio of an outcome or output to an input.

Efficiency Measures

- Must have baselines and targets (pp.41-43)
- Question 3.4 is linked to Question 4.3
- Question 4.3 explanation should include specific information about the program's annual savings and how they were achieved (p.58)

Output Efficiency Measures Fiscal Year Comparisons (p. 10; Appendix D)

- In comparisons among time periods, output efficiency measures are only valid when the outputs intended to be produced within each time period are comparable.
 - To assure validity, the PART requires assessment of the comparability of the kinds of outputs produced during measurement periods.

Program Evaluations (Question 2.6 and 4.3)

- **Question 2.6:**
 - Yes response requires demonstration that evaluation methods used provide the most rigorous evidence of a program's effectiveness that is appropriate and feasible.
 - Lays out criteria for quality, scope, independence and frequency of evaluation.

Program Evaluations

- **Scope** - Examine the underlying cause and effect relationship between the program and achievement of performance targets.
- **Independence** - Performed by non-biased parties with no conflict of interest should conduct the evaluations. (TBD by agency and OMB staff.)
- **Quality**
 - **Applicability** – All programs expected to undergo some type of evaluation.
 - **Impact** – Prefer effectiveness evaluations consider a program's impact (outcome, e.g., whether the Federal intervention makes a difference).
 - **Rigor** – Provide the most rigorous evidence that is appropriate and feasible for that program.

Quality Program Evaluation

- Can a program demonstrate impact?
 - If Yes - randomized controlled trials are generally the highest quality, unbiased evaluation to demonstrate actual impact, but only when it is appropriate and feasible to conduct such studies.
 - If No - a variety of quasi-experimental methods (e.g., comparison group studies) and non-experimental methods may help shed light on *how or why* a program is effective.
 - Bottom line - Evaluations must be appropriate to the type of program.

Suggestions

- **Share drafts, communicate frequently to plan and coordinate.**
- **Use clear, direct language in explanations and evidence.**
- **Stick to the deadlines.**
- **Don't take the PART personally.**
- **Rely on evidence, not anecdotes.**
- **Don't flood OMB with mounds of "evidence". Point out exactly where the evidence is any document.**

Does It Ever End?

- **Steps after PARTs are completed**
 - **Draft summaries for ExpectMore.gov**
 - **Complete Improvement Plans**
 - All programs must have regardless of PART rating
 - Focus on the findings in the PART assessment
 - Implement plans and report on progress
 - **ExpectMore.gov release mid-August**

Resources on PART

- www.omb.gov/part
 - Information on process and schedule
 - Guidance for completing PART
 - PARTWeb link, user's manual
 - Supporting materials
- www.ExpectMore.gov

PROGRAM ASSESSMENT RATING TOOL



Questions and Answers