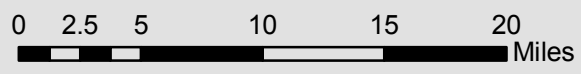


Legend

Water bodies	Mineral Resource
County Boundaries	Sand and Gravel
Municipal Boundaries	Industrial Sand
Nation Lands	Shale
Mine Status	Limestone
Active	Peat
Reclaimed	Topsoil
Expired; not reclaimed	Clay
Pending; permit not issued	Granite
Temporary code for other mines	Glacial Till

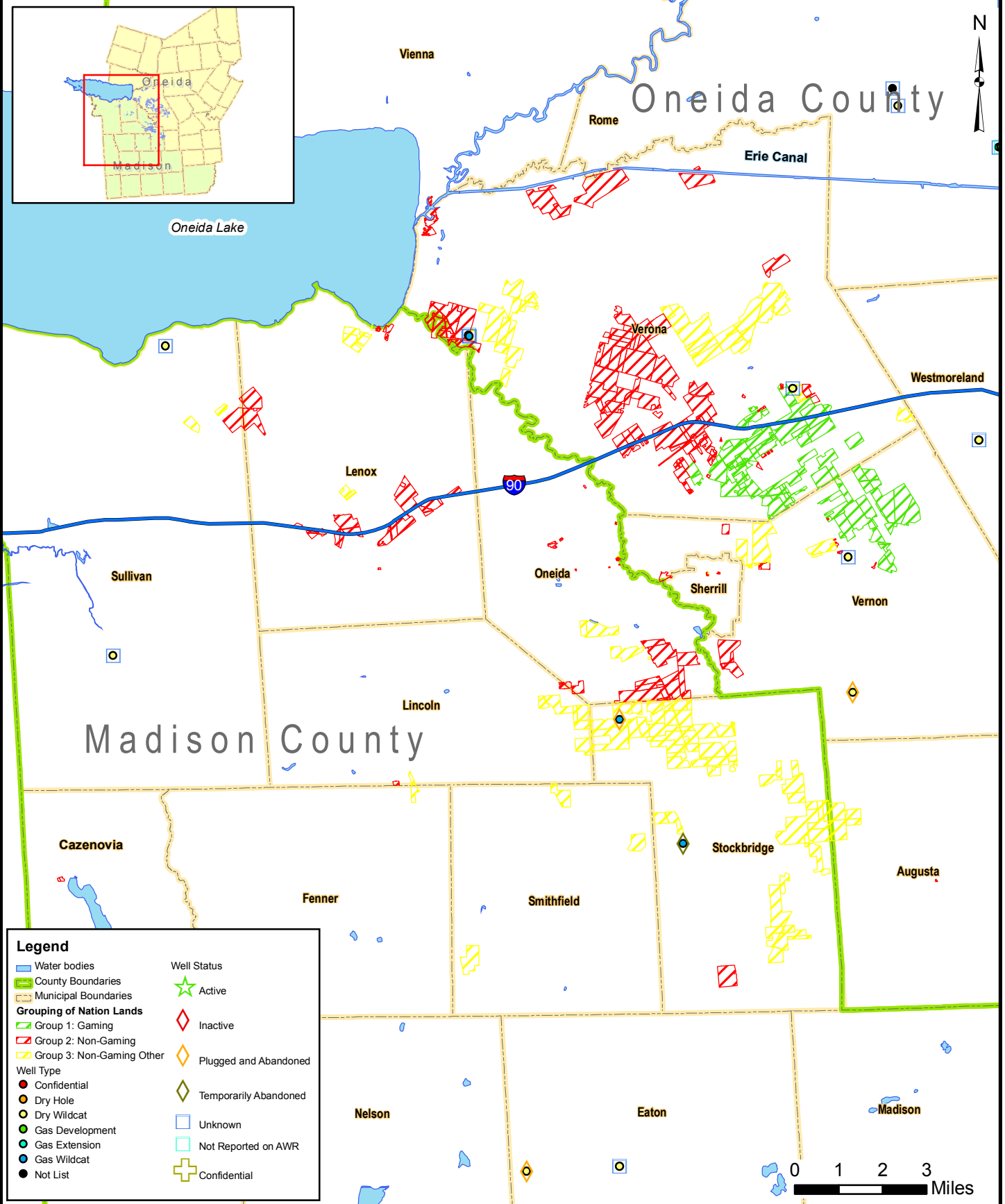


Sources:
Mines: Division of Mineral Resources, DEC
Nation Properties: Nation, 2005

MINES

FIGURE 3.8-1

Map Document: (S:\Projects\GIS\477001\DEIS\MapXDocs\Land_Resources\Mines_sec3.8.mxd)
10/18/2006 -- 9:50:44 AM



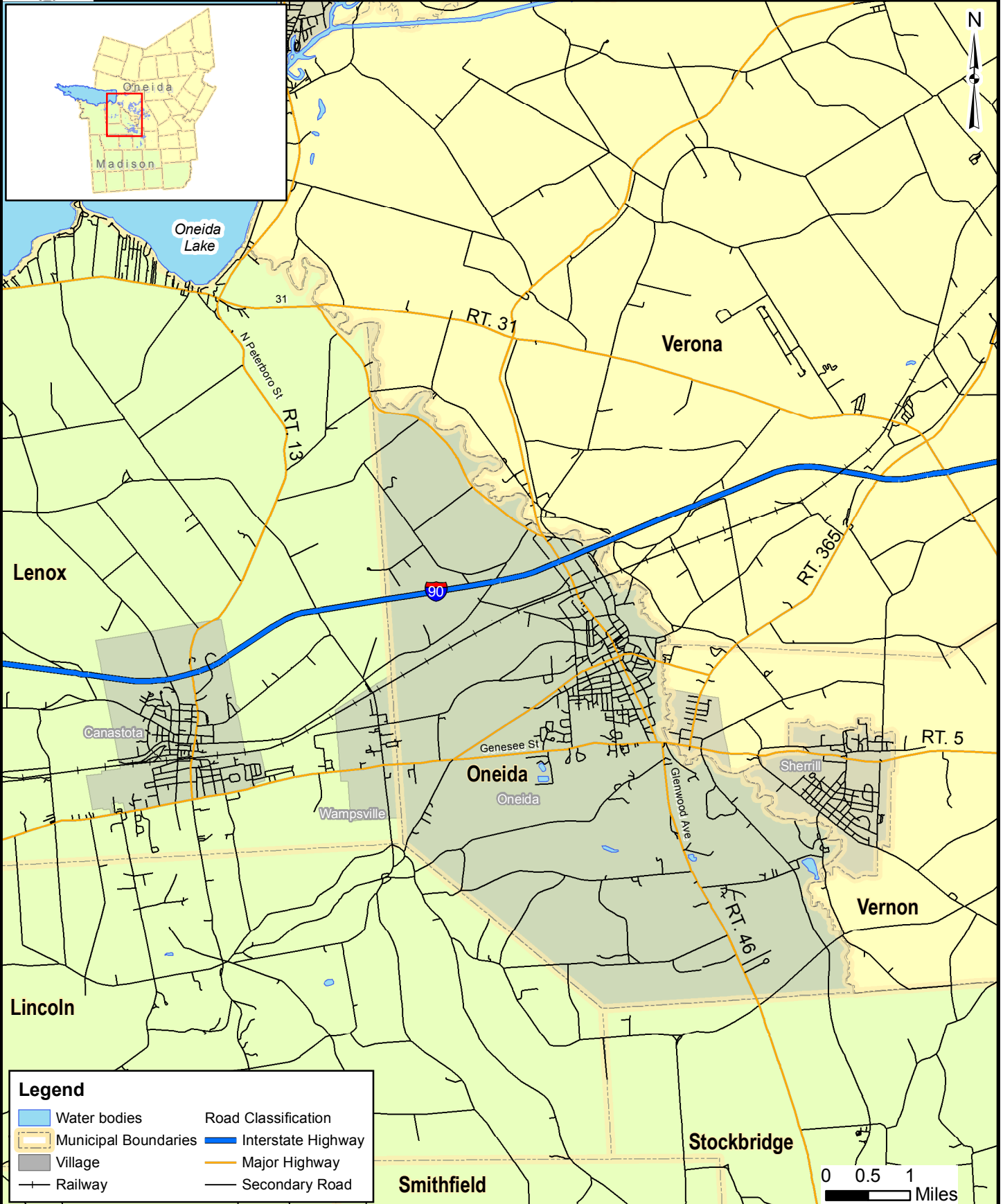
Legend

Water bodies	Well Status: Active
County Boundaries	Well Status: Inactive
Municipal Boundaries	Well Status: Plugged and Abandoned
Group of Nation Lands	Well Status: Temporarily Abandoned
Group 1: Gaming	Well Status: Unknown
Group 2: Non-Gaming	Well Status: Not Reported on AWR
Group 3: Non-Gaming Other	Well Status: Confidential
Well Type	
Confidential	
Dry Hole	
Dry Wildcat	
Gas Development	
Gas Extension	
Gas Wildcat	
Not List	

Sources:
Wells: Division of Mineral Resources, DEC
Nation Properties: Nation, 2005

OIL AND GAS WELLS

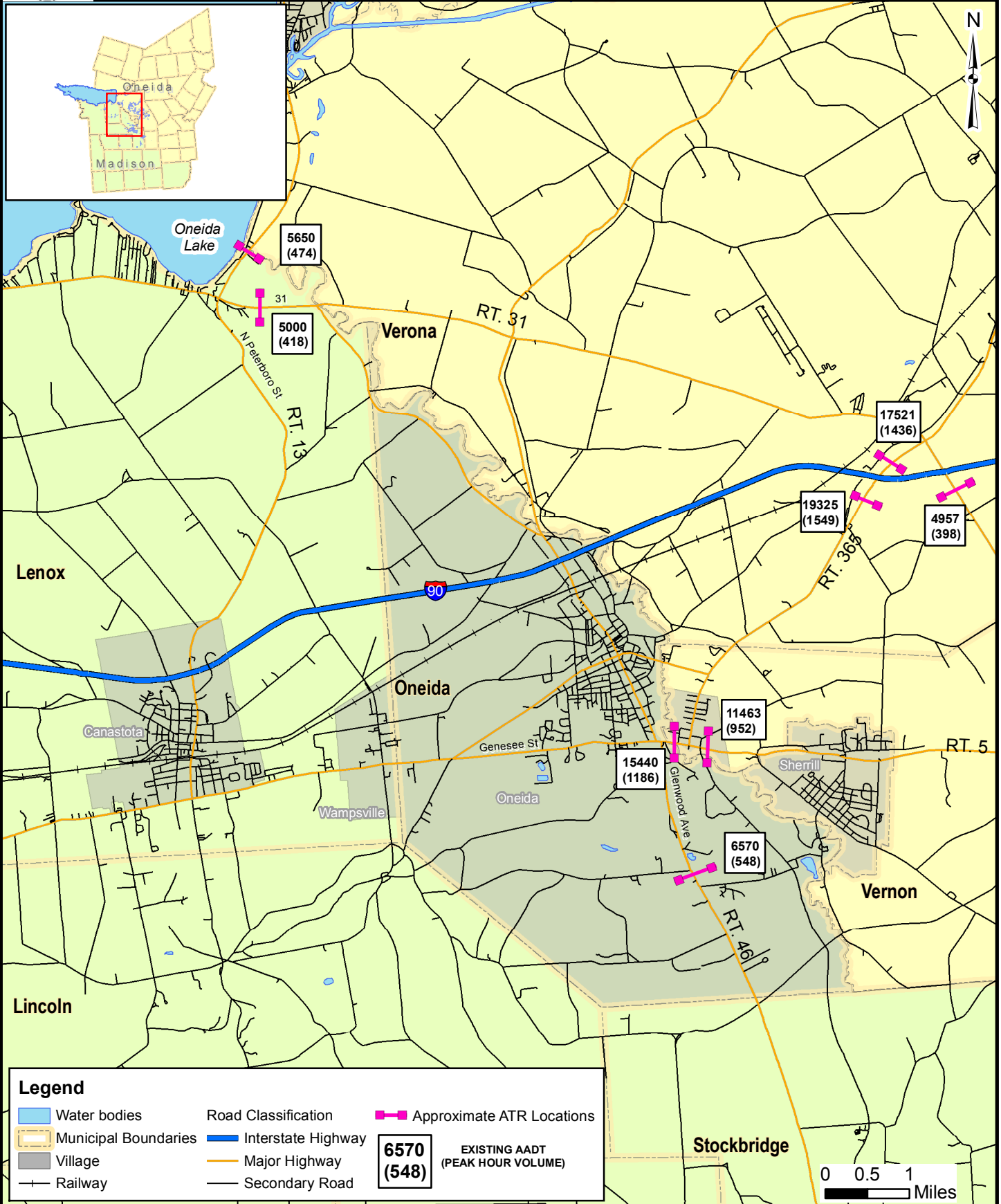
FIGURE 3.8-2



Sources:
Roads: StreetMap, ESRI
Traffic Impact: C&S, 2006

**TRANSPORTATION
STUDY AREA**

**FIGURE
3.8-3**



Legend

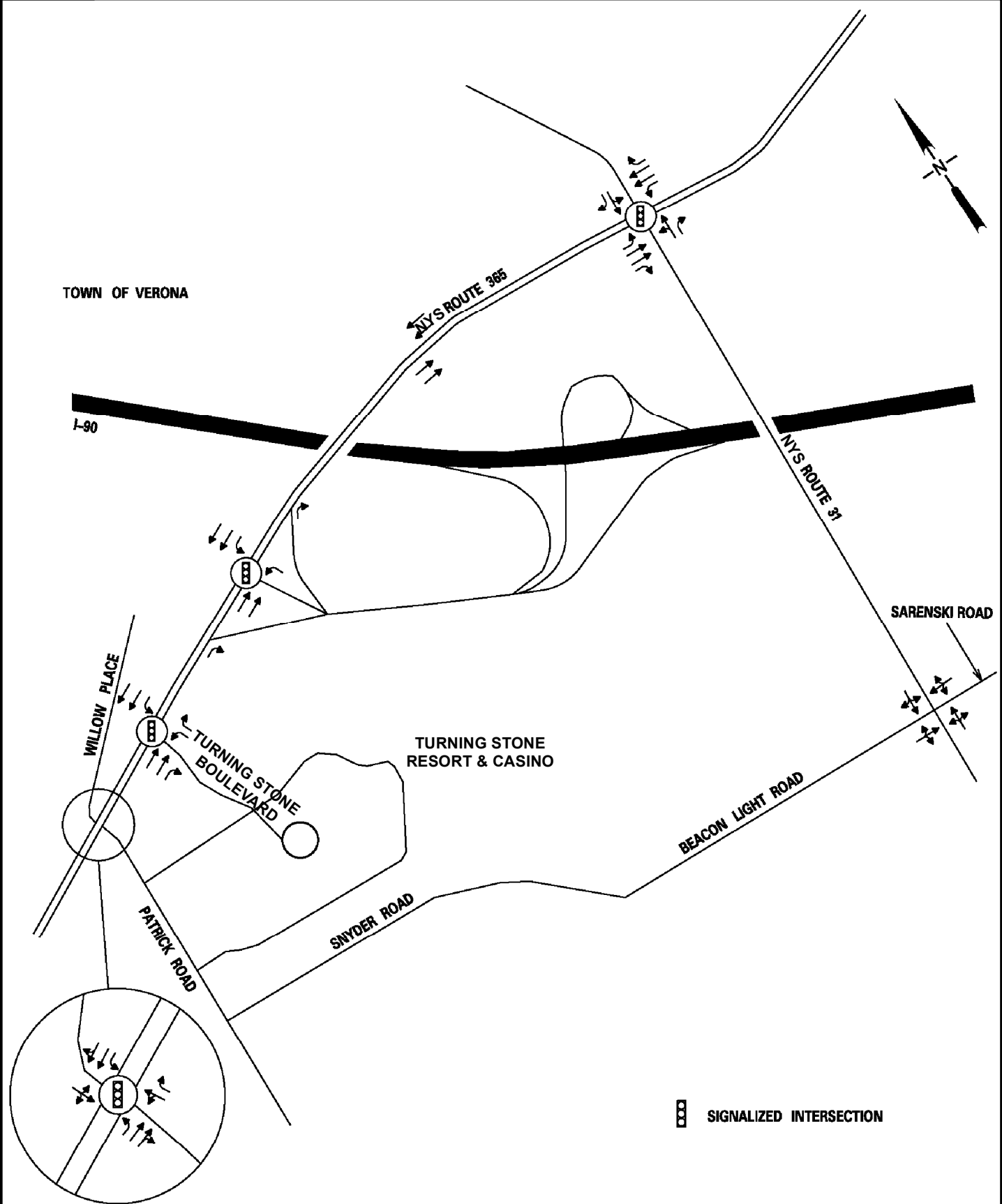
Water bodies	Road Classification	Approximate ATR Locations
Municipal Boundaries	Interstate Highway	6570 (548) EXISTING AADT (PEAK HOUR VOLUME)
Village	Major Highway	
Railway	Secondary Road	

Sources:
Roads: StreetMap, ESRI
Traffic Impact: C&S, 2006

AVERAGE ANNUAL DAILY TRAFFIC

FIGURE 3.8-4

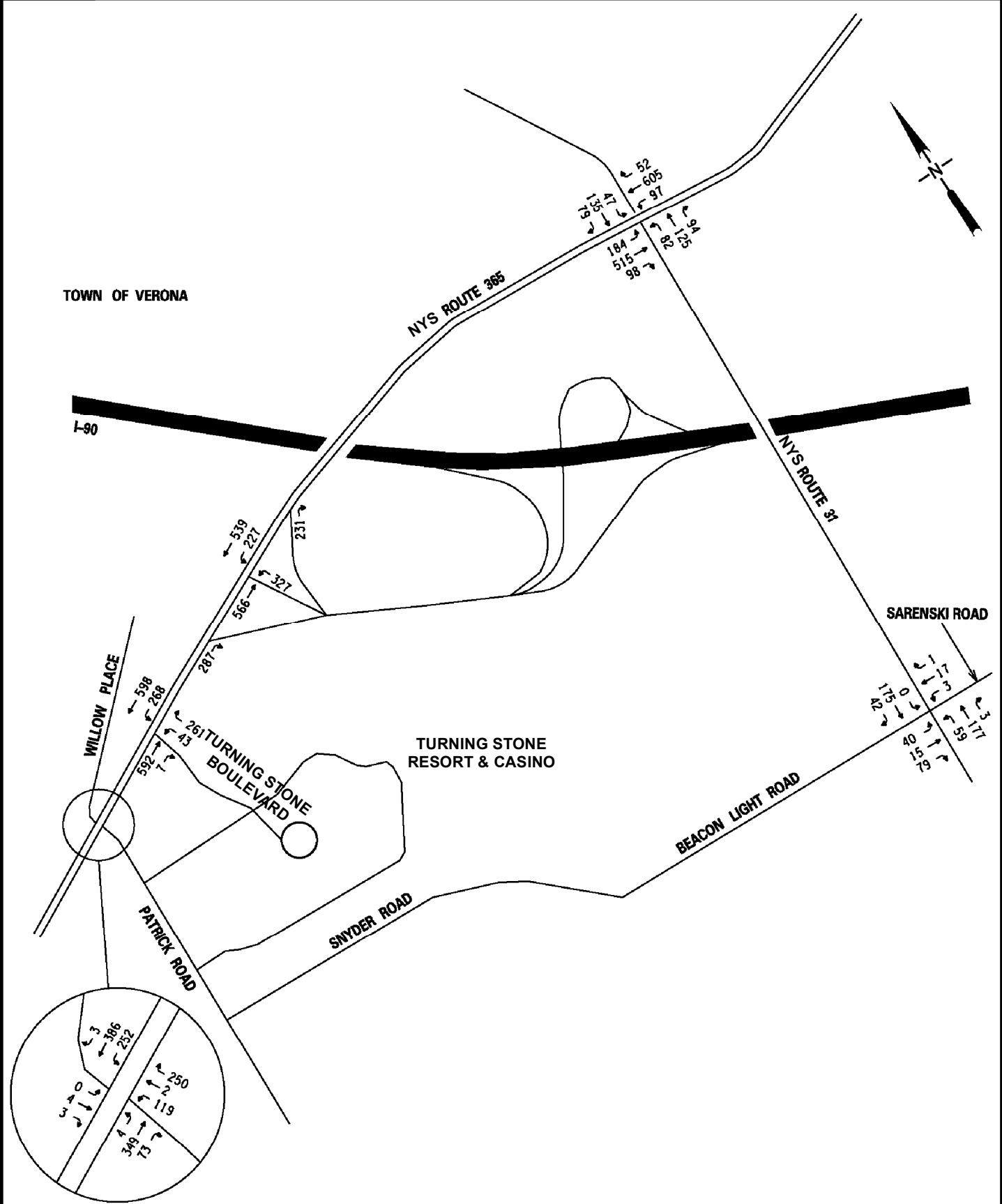
Map Document: (S:\Projects\647701\DE\SMX\3a\Transportation&TrafficAverage_Annual_Daily_Traffic.mxd) 10/16/2006 - 10:08:36 AM



Sources:
Traffic Impact Study - C&S, 2006

**TURNING STONE RESORT & CASINO
LANE CONFIGURATION**

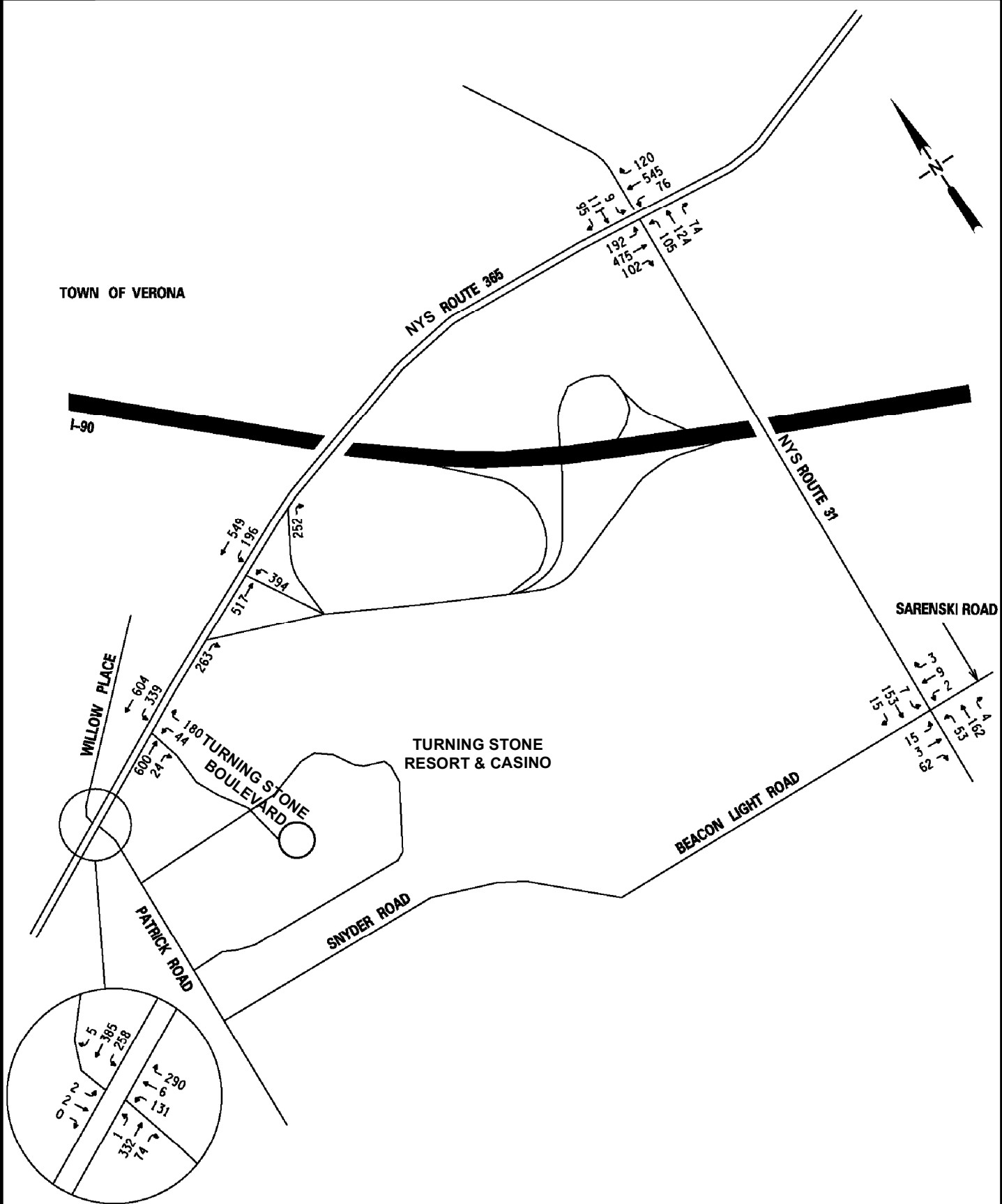
**FIGURE
3.8-5**



Sources:
Traffic Impact Study - C&S, 2006

**EXISTING TRAFFIC VOLUMES
TYPICAL WEEKDAY P.M. PEAK**

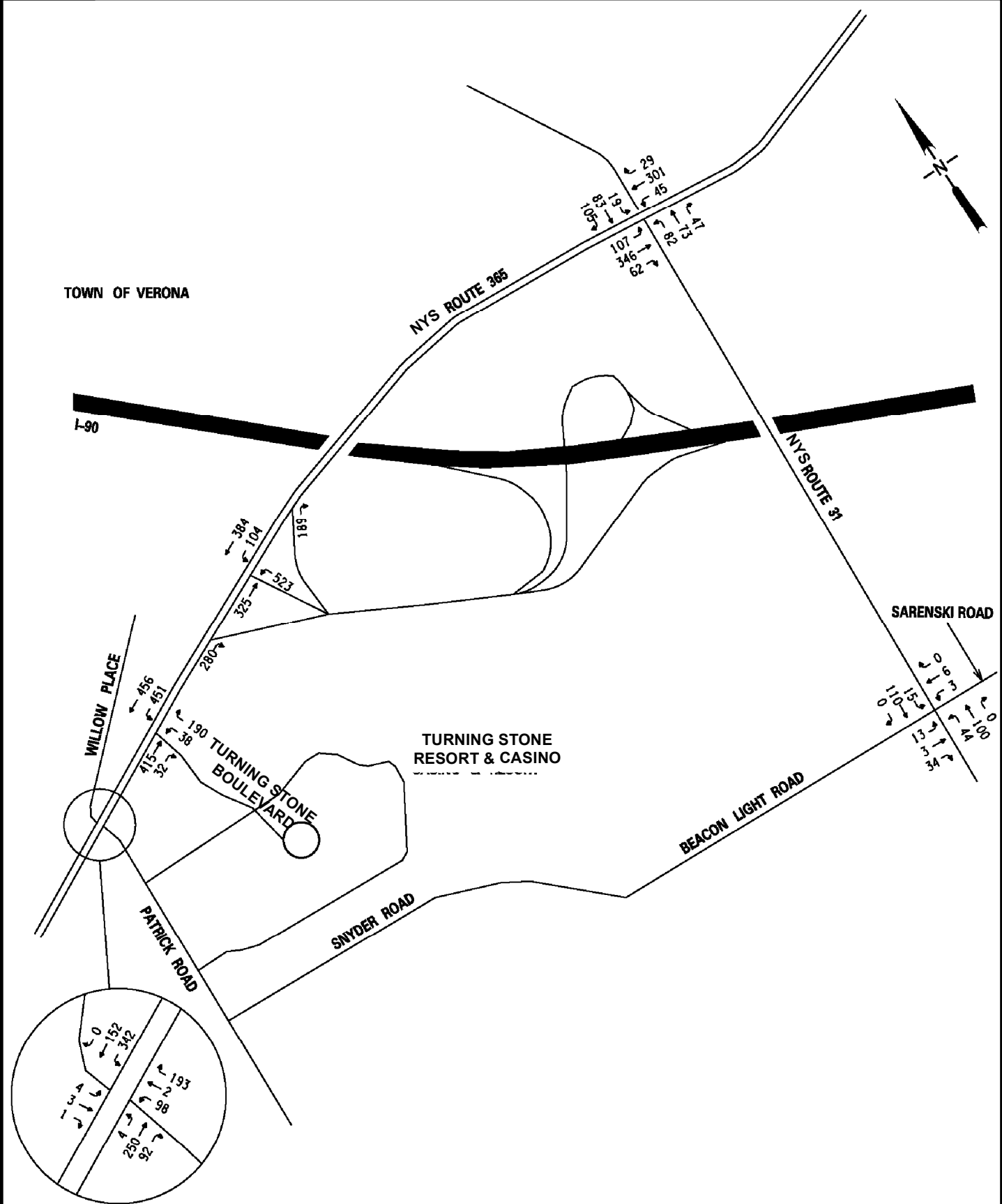
**FIGURE
3.8-6**



Sources:
Traffic Impact Study - C&S, 2006

**EXISTING TRAFFIC VOLUMES
SPECIAL EVENT WEEKDAY P.M. PEAK**

**FIGURE
3.8-7**

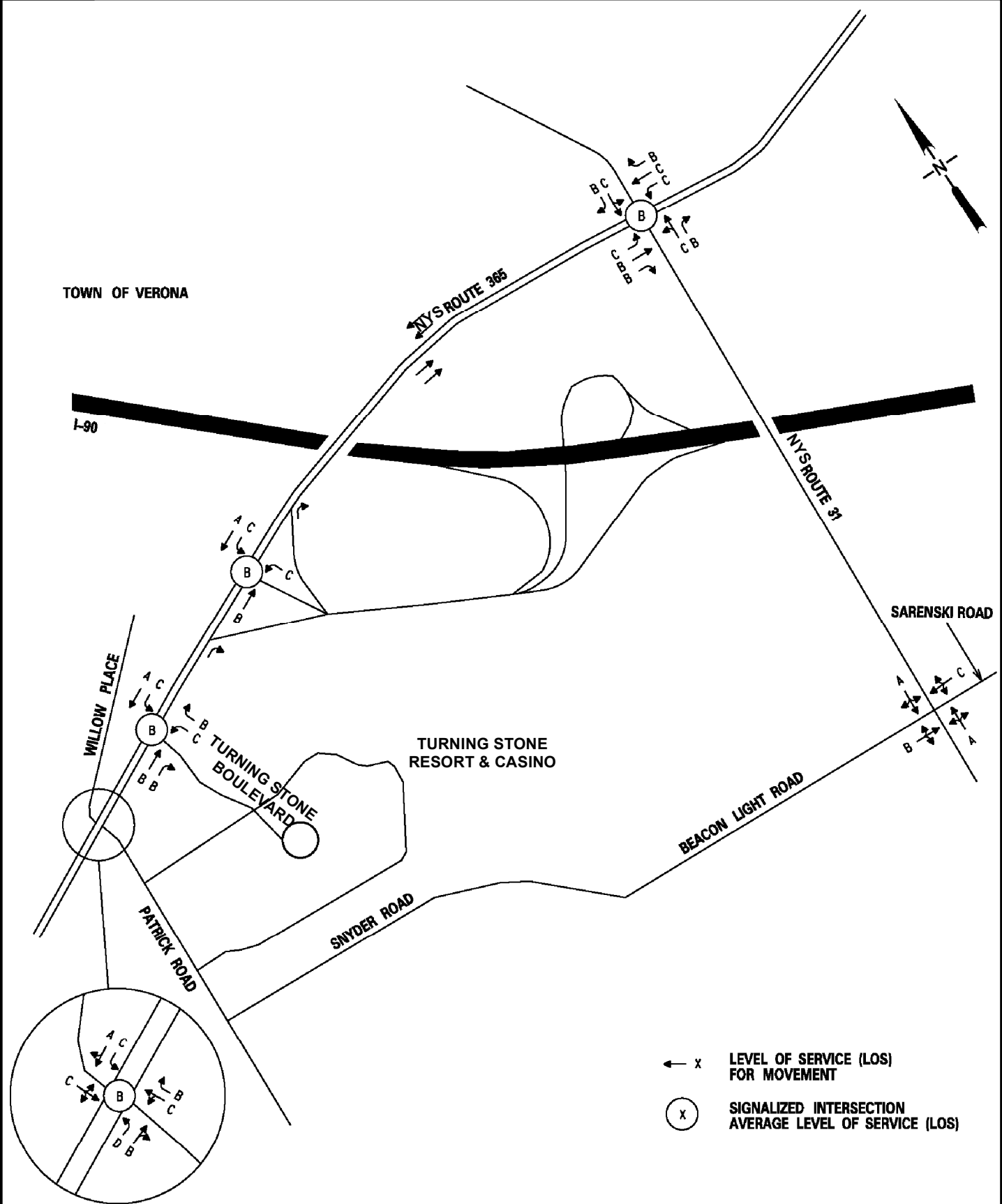


Sources:
Traffic Impact Study - C&S, 2006

**EXISTING TRAFFIC VOLUMES
SPECIAL EVENT WEEKEND P.M. PEAK**

**FIGURE
3.8-8**

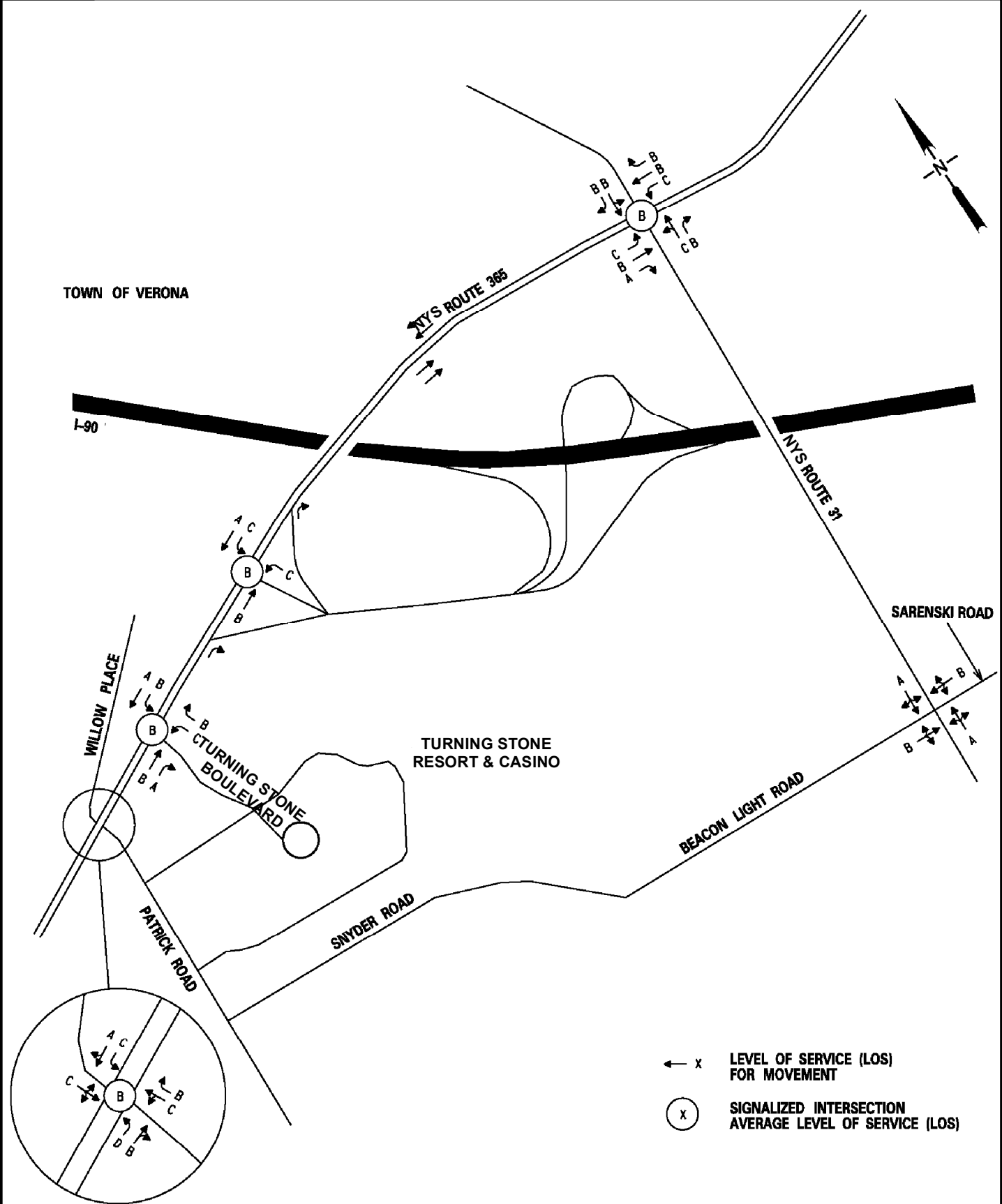
Map Document: (S:\Projects\5477001\DEIS\MXDs\Transportation&Traffic\Existing_Traffic_volumes_specialweekend_pm_peak.mxd)
10/18/2006 -- 10:10:43 AM



Sources:
Traffic Impact Study - C&S, 2006

EXISTING LEVEL OF SERVICE
TYPICAL WEEKDAY P.M. PEAK

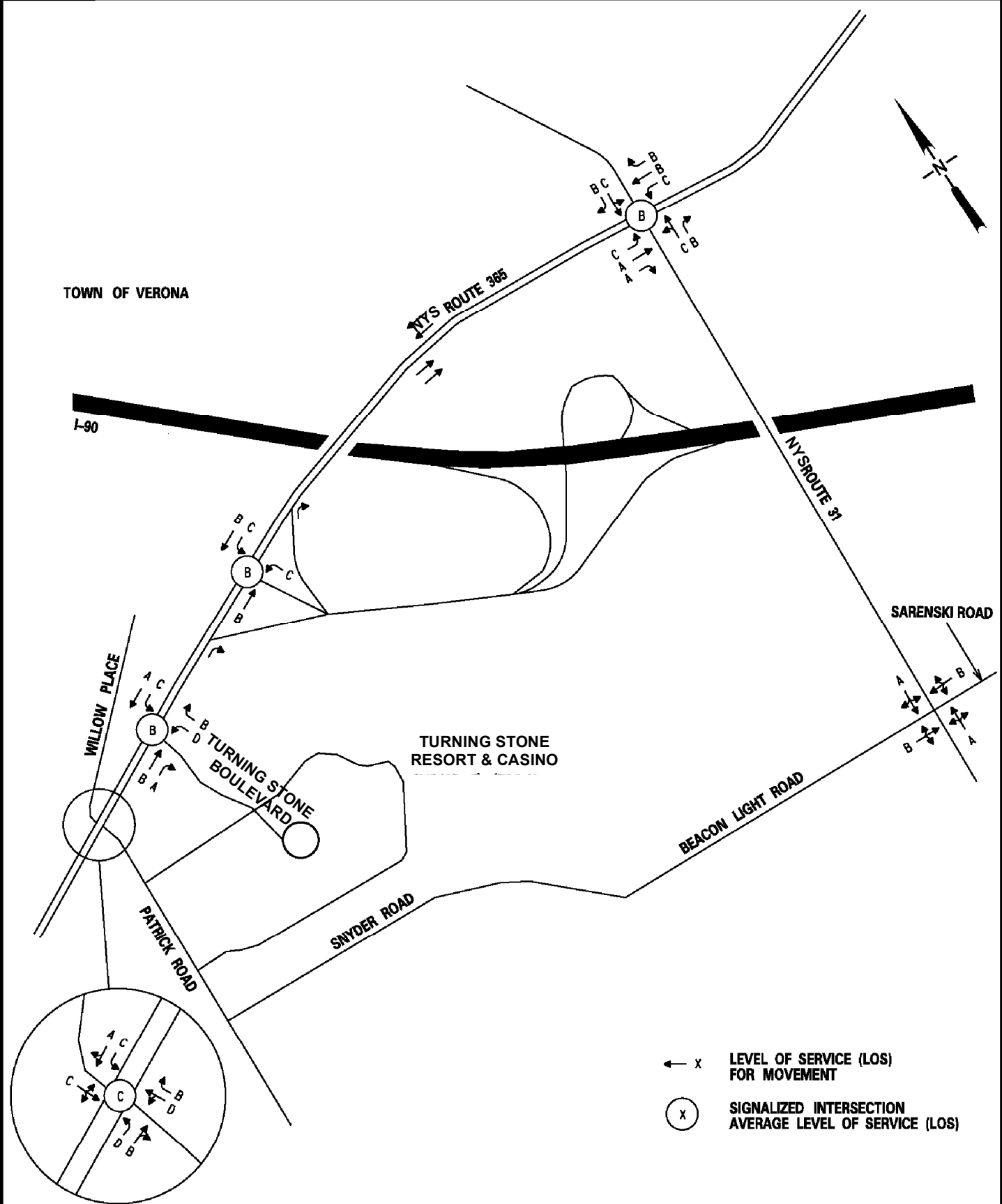
FIGURE
3.8-9



Sources:
Traffic Impact Study - C&S, 2006

**EXISTING LEVEL OF SERVICE
SPECIAL EVENT WEEKDAY P.M. PEAK**

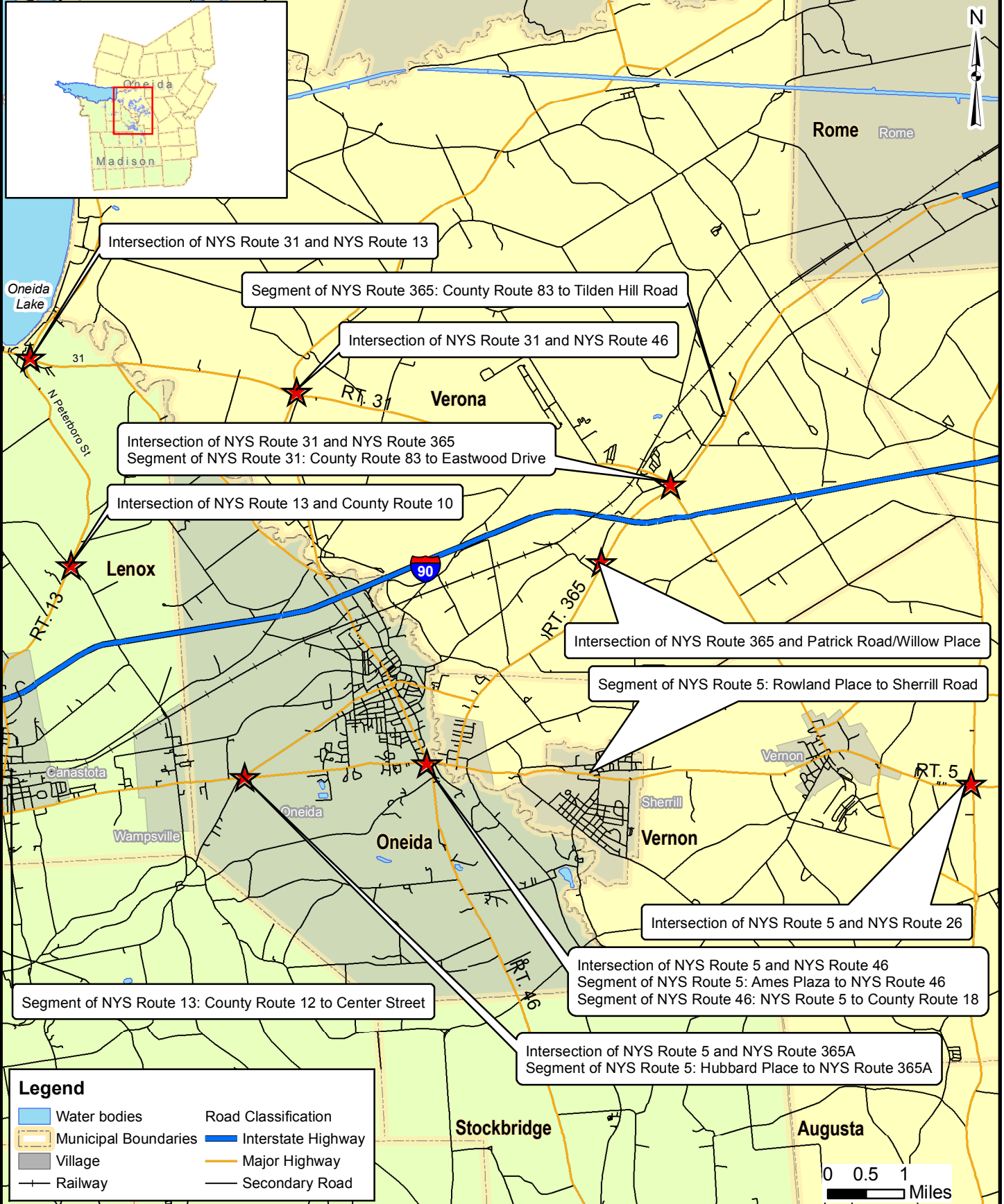
**FIGURE
3.8-10**



Sources:
Traffic Impact Study - C&S, 2006

**EXISTING LEVEL OF SERVICE
SPECIAL EVENT WEEKEND P.M. PEAK**

**FIGURE
3.8-11**

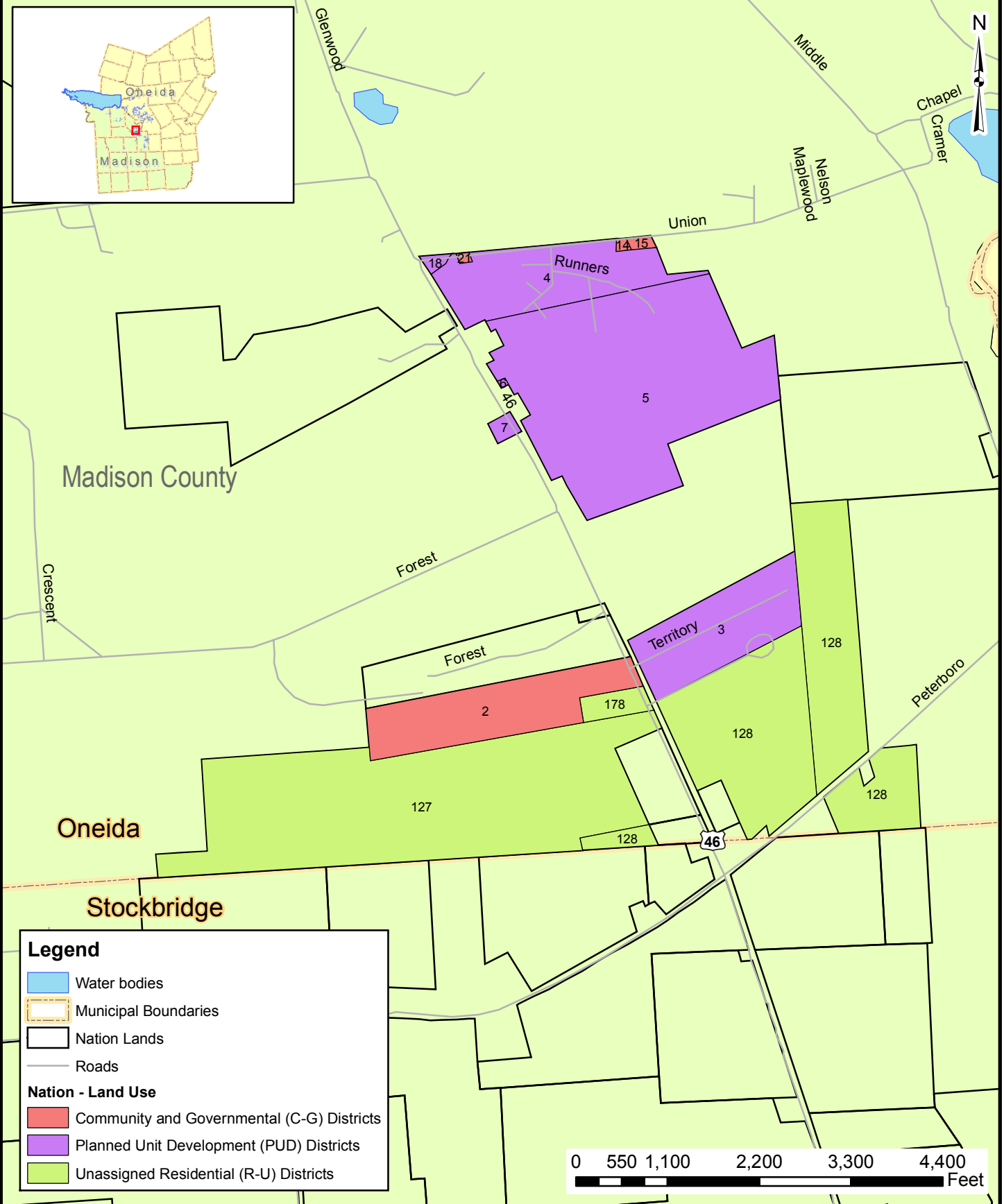


Sources:
Roads: StreetMap, ESRI
Traffic Impact: C&S, 2006

HIGH ACCIDENT LOCATIONS

**FIGURE
3.8-12**

Map Document: (S:\Projects\647701\DE\SMX\3a\Transportation&Traffic\high_accident_locations.mxd)
10/16/2006 - 10:12:27 AM



Map Document: (S:\Projects\65477\001\DEIS\Map\Land_Resources\Landuse_Zoning\15_OIN_Landuse_Districts.mxd)
10/17/2006 -- 3:52:00 PM

Sources:
Water bodies: ESRI, 2002
Municipalities: CUGIR, 2005
Land Use: Nation, 2002
Nation Properties: Nation, 2005

NATION LAND USE DISTRICTS

**FIGURE
3.8-13**