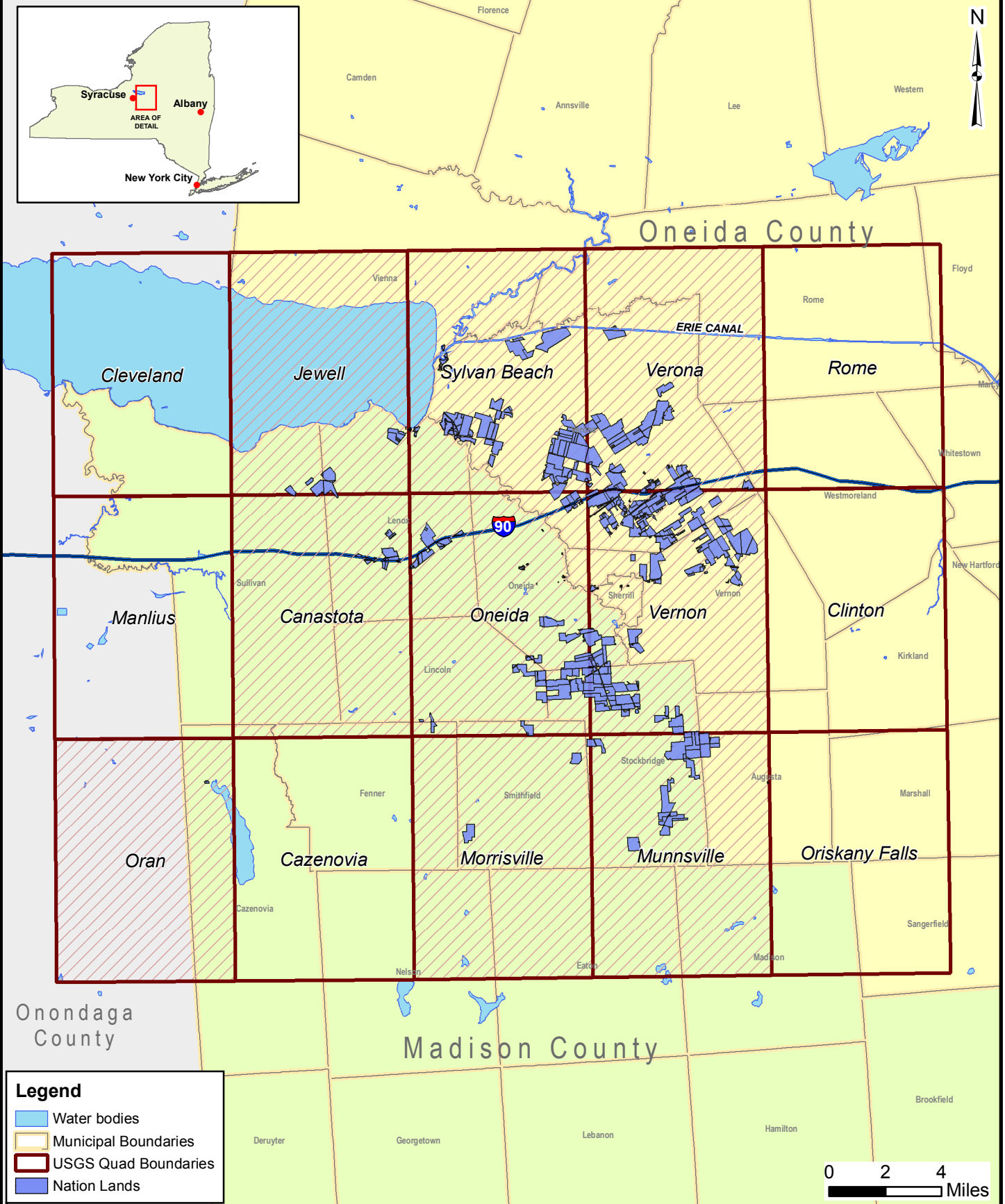


Sources:  
Elevations: USGS  
Nation Properties: Nation, 2005  
Streams: CUGIR, 2005

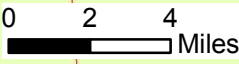
3D TOPOGRAPHY

FIGURE  
3.2-1



**Legend**

- Water bodies
- Municipal Boundaries
- USGS Quad Boundaries
- Nation Lands

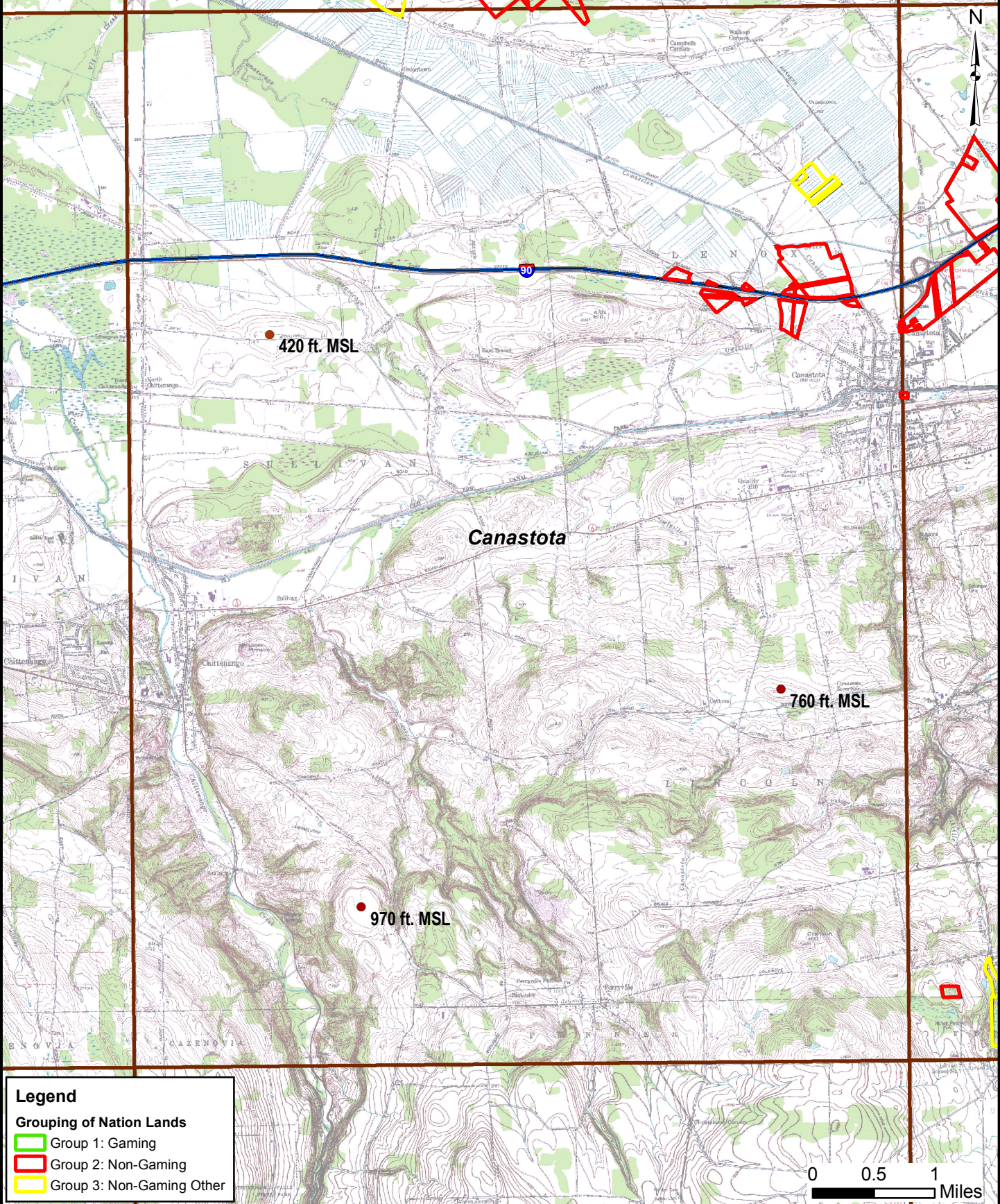


Sources:  
Topo Quads: TerraServer, USA  
Nation Properties: Nation, 2005




**KEY MAP: TOPOGRAPHY QUADRANGLES**

**FIGURE  
3.2-2**

Map Document: G:\Projects\64770\DEIS\MXDs\Land\_Resources\Topography\KeyMap\_Topography.mxd  
10/17/2008 - 12:54:43 PM



**Legend**

- Grouping of Nation Lands**
-  Group 1: Gaming
  -  Group 2: Non-Gaming
  -  Group 3: Non-Gaming Other

Sources:  
Topo Quad: TerraServer, USA  
Nation Properties: Nation, 2005

**TOPOGRAPHY: CANASTOTA QUADRANGLE**

**FIGURE  
3.2-3**



**Legend**

**Grouping of Nation Lands**

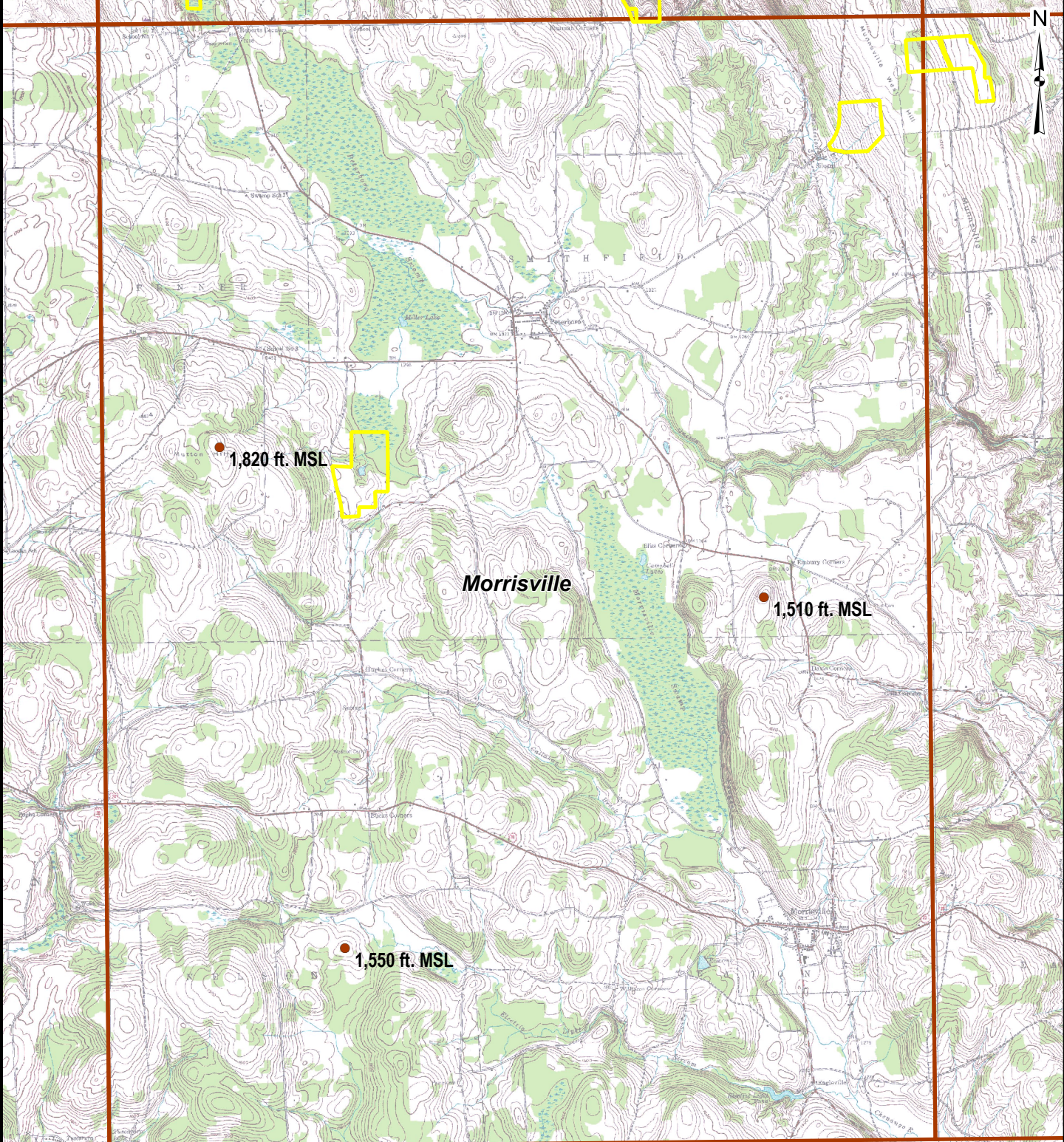
- Group 1: Gaming
- Group 2: Non-Gaming
- Group 3: Non-Gaming Other

Sources:  
Topo Quad: TerraServer, USA  
Nation Properties: Nation, 2005

**TOPOGRAPHY: JEWELL QUADRANGLE**

**FIGURE  
3.2-4**

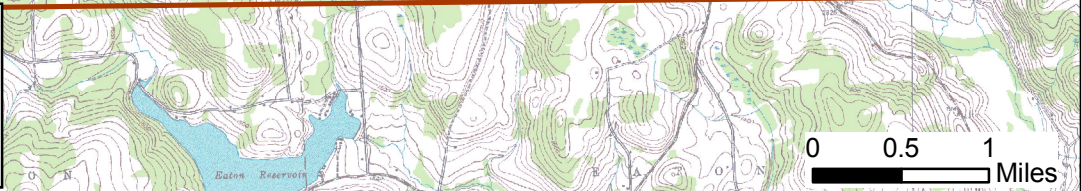
Map Document: (S:\projects\647701\DEIS\MXDs\Land\_Resources\Topography\Topography\_Jewell.mxd)  
10/17/2008 - 12:58:46 PM



**Legend**

**Grouping of Nation Lands**

- Group 1: Gaming
- Group 2: Non-Gaming
- Group 3: Non-Gaming Other

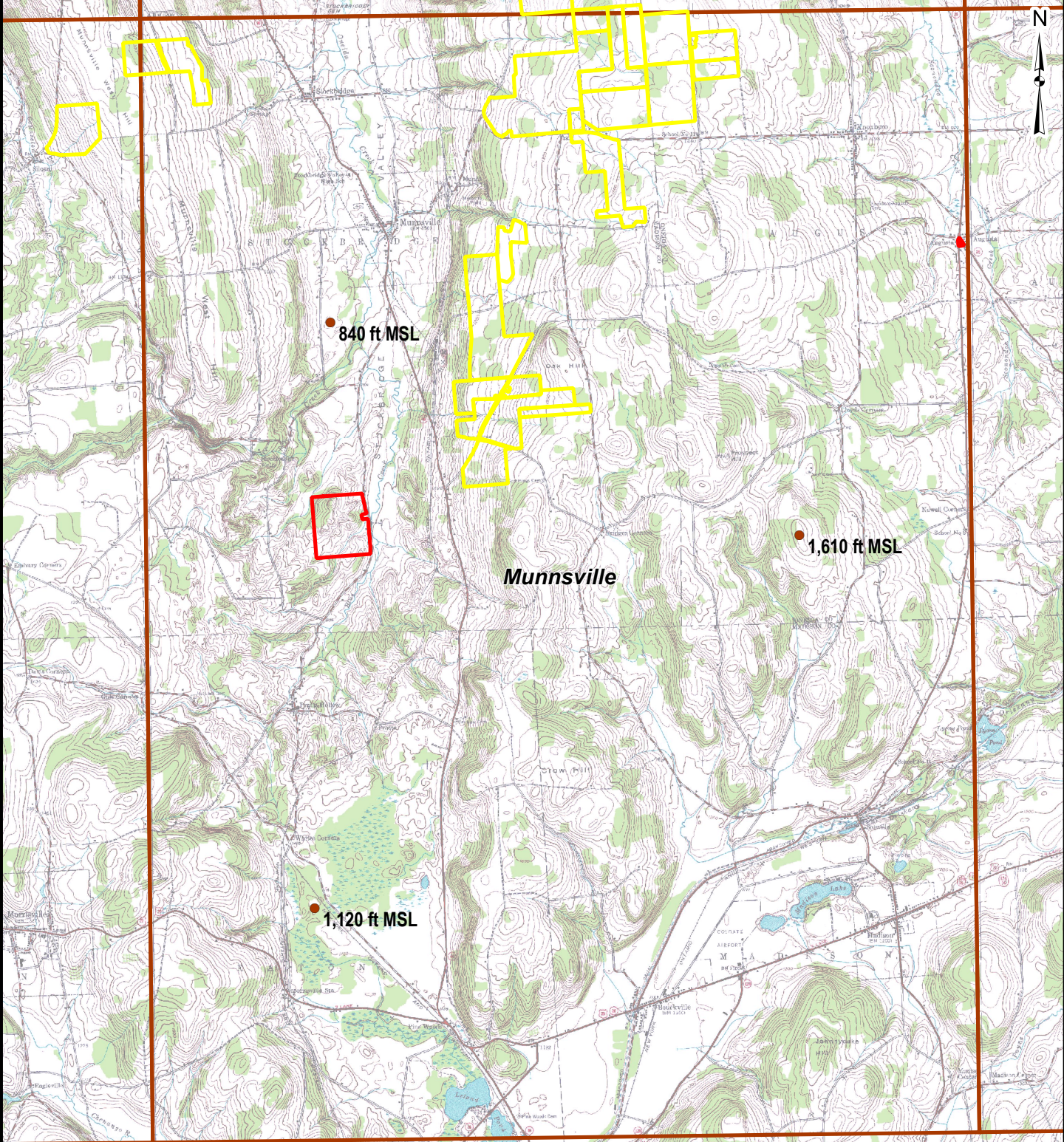


Sources:  
 Topo Quad: TerraServer, USA  
 Nation Properties: Nation, 2005

**TOPOGRAPHY: MORRISVILLE QUADRANGLE**




**FIGURE  
3.2-5**

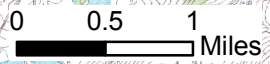
Map Document: (S:\Projects\647701\DEIS\MXDs\Land\_Resources\Topography\Topography\_Morrisville.mxd)  
10/17/2008 - 2:28:51 PM



**Legend**

**Grouping of Nation Lands**

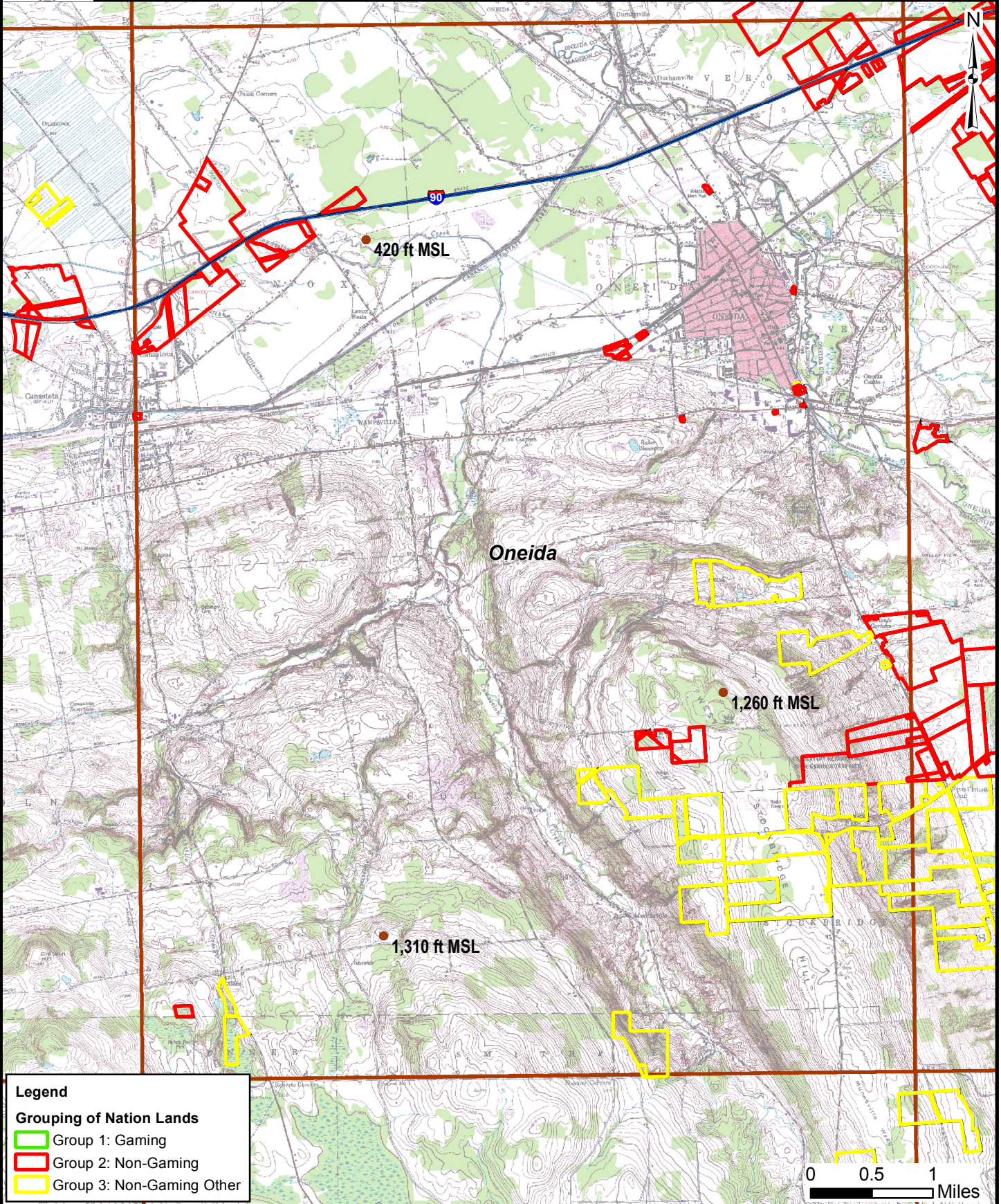
-  Group 1: Gaming
-  Group 2: Non-Gaming
-  Group 3: Non-Gaming Other



Sources:  
Topo Quad: TerraServer, USA  
Nation Properties: Nation, 2005

**TOPOGRAPHY: MUNNSVILLE QUADRANGLE**

**FIGURE  
3.2-6**



**Legend**

**Grouping of Nation Lands**

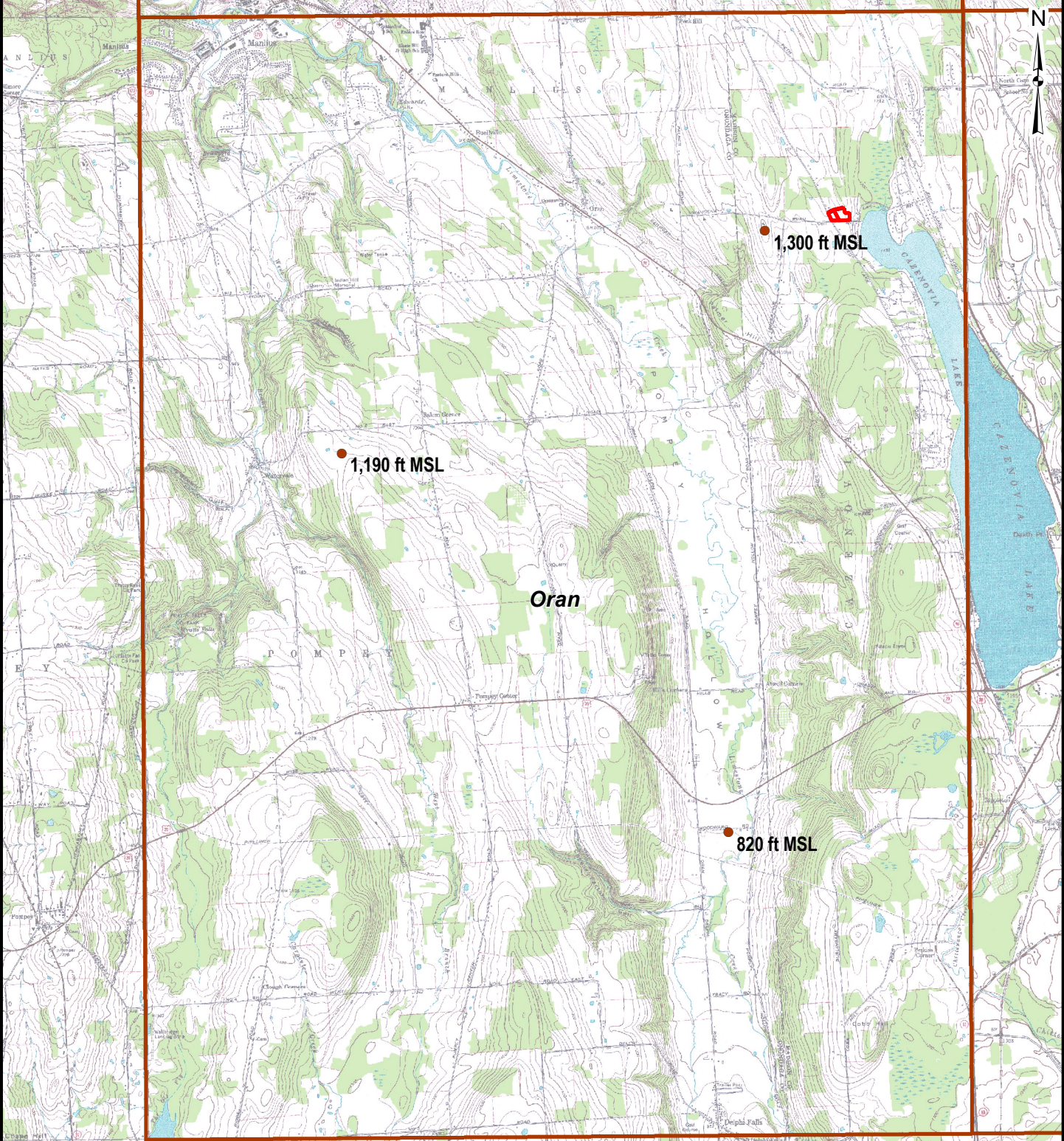
- Group 1: Gaming
- Group 2: Non-Gaming
- Group 3: Non-Gaming Other

Sources:  
Topo Quad: TerraServer, USA  
Nation Properties: Nation, 2005

**TOPOGRAPHY: ONEIDA QUADRANGLE**




**FIGURE  
3.2-7**

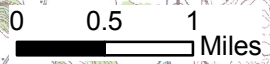
Map Document: S:\Projects\647701\DEIS\MXDs\Land\_Resources\Topography\Topography\_Oneida.mxd  
10/17/2006 - 2:28:24 PM



**Legend**

**Grouping of Nation Lands**

-  Group 1: Gaming
-  Group 2: Non-Gaming
-  Group 3: Non-Gaming Other

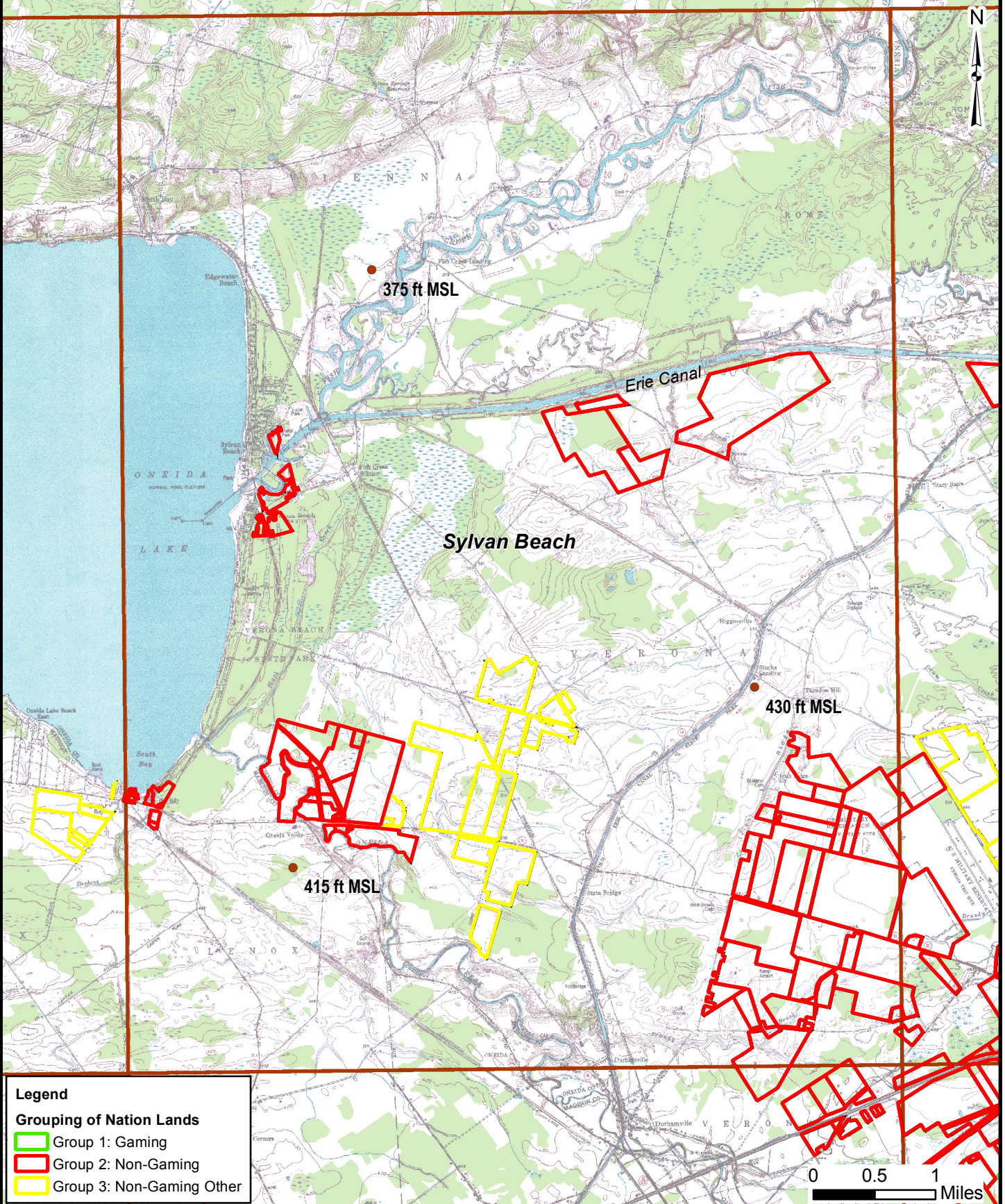


Sources:  
Topo Quad: TerraServer, USA  
Nation Properties: Nation, 2005

**TOPOGRAPHY: ORAN QUADRANGLE**




**FIGURE  
3.2-8**





**Legend**

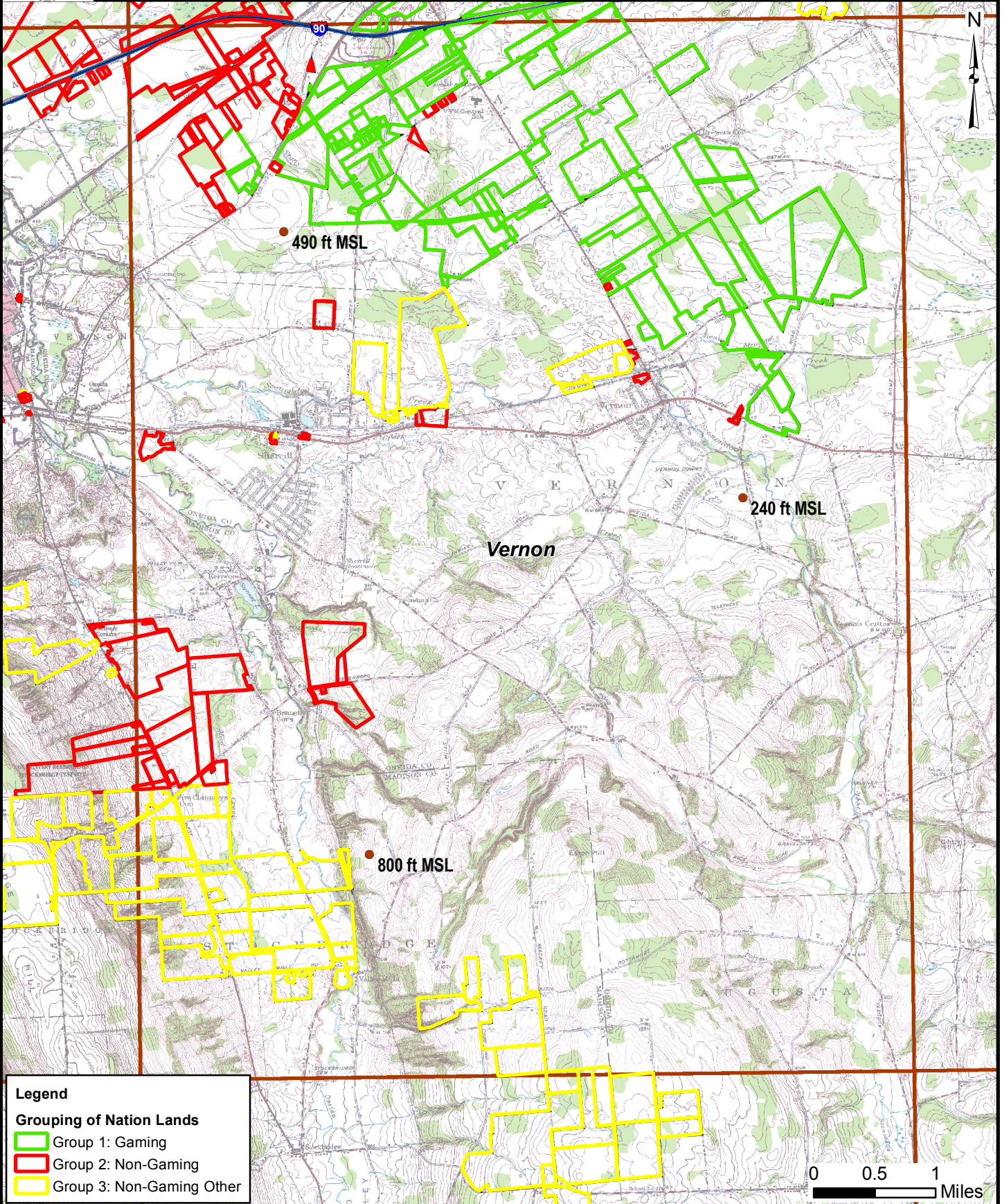
**Grouping of Nation Lands**

-  Group 1: Gaming
-  Group 2: Non-Gaming
-  Group 3: Non-Gaming Other

Sources:  
Topo Quad: TerraServer, USA  
Nation Properties: Nation, 2005

**TOPOGRAPHY: SYLVAN BEACH QUADRANGLE**

**FIGURE  
3.2-9**



**Legend**

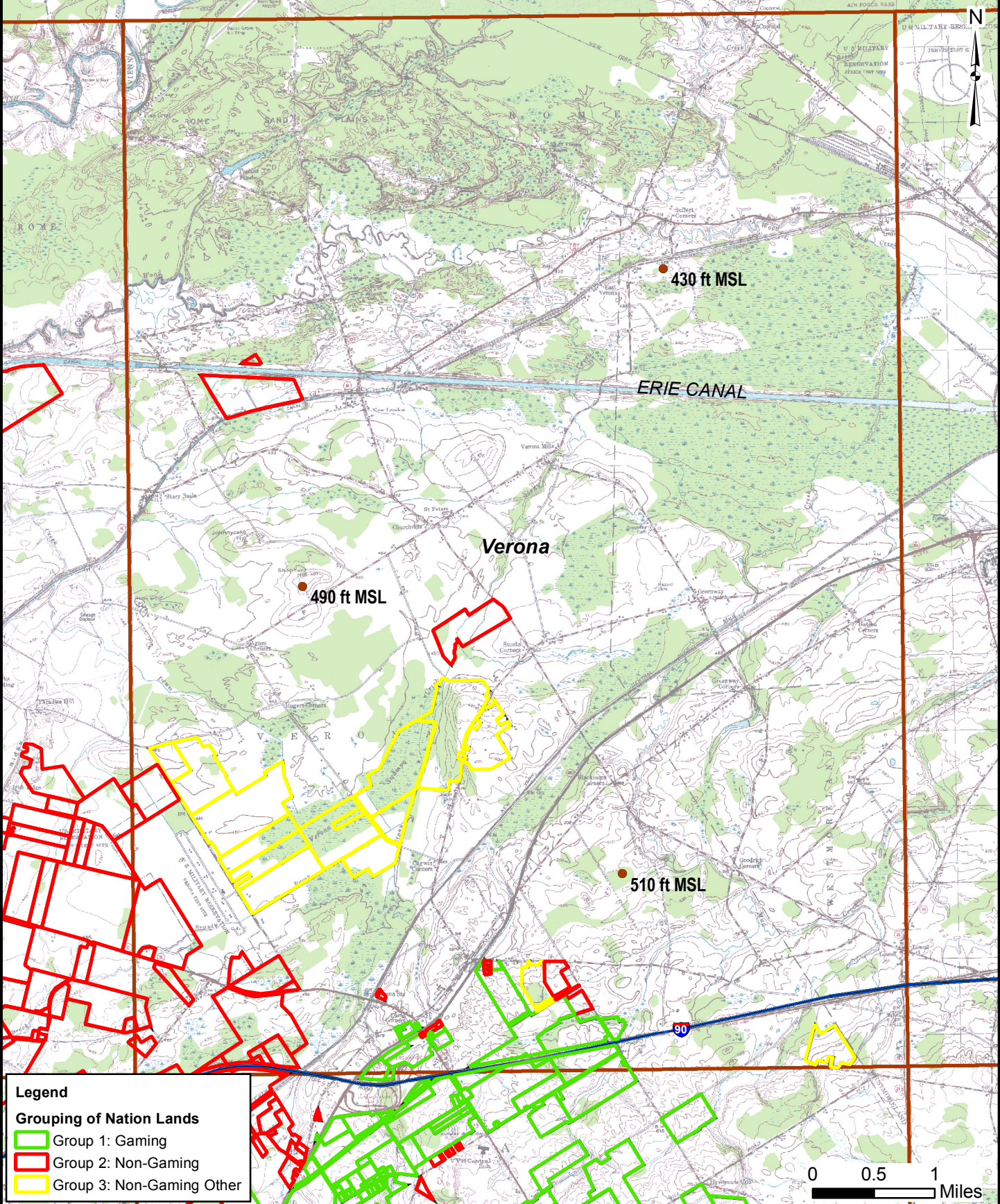
**Grouping of Nation Lands**

- Group 1: Gaming
- Group 2: Non-Gaming
- Group 3: Non-Gaming Other

Sources:  
Topo Quad: TerraServer, USA  
Nation Properties: Nation, 2005

**TOPOGRAPHY: VERNON QUADRANGLE**

**FIGURE  
3.2-10**



**Legend**

**Grouping of Nation Lands**

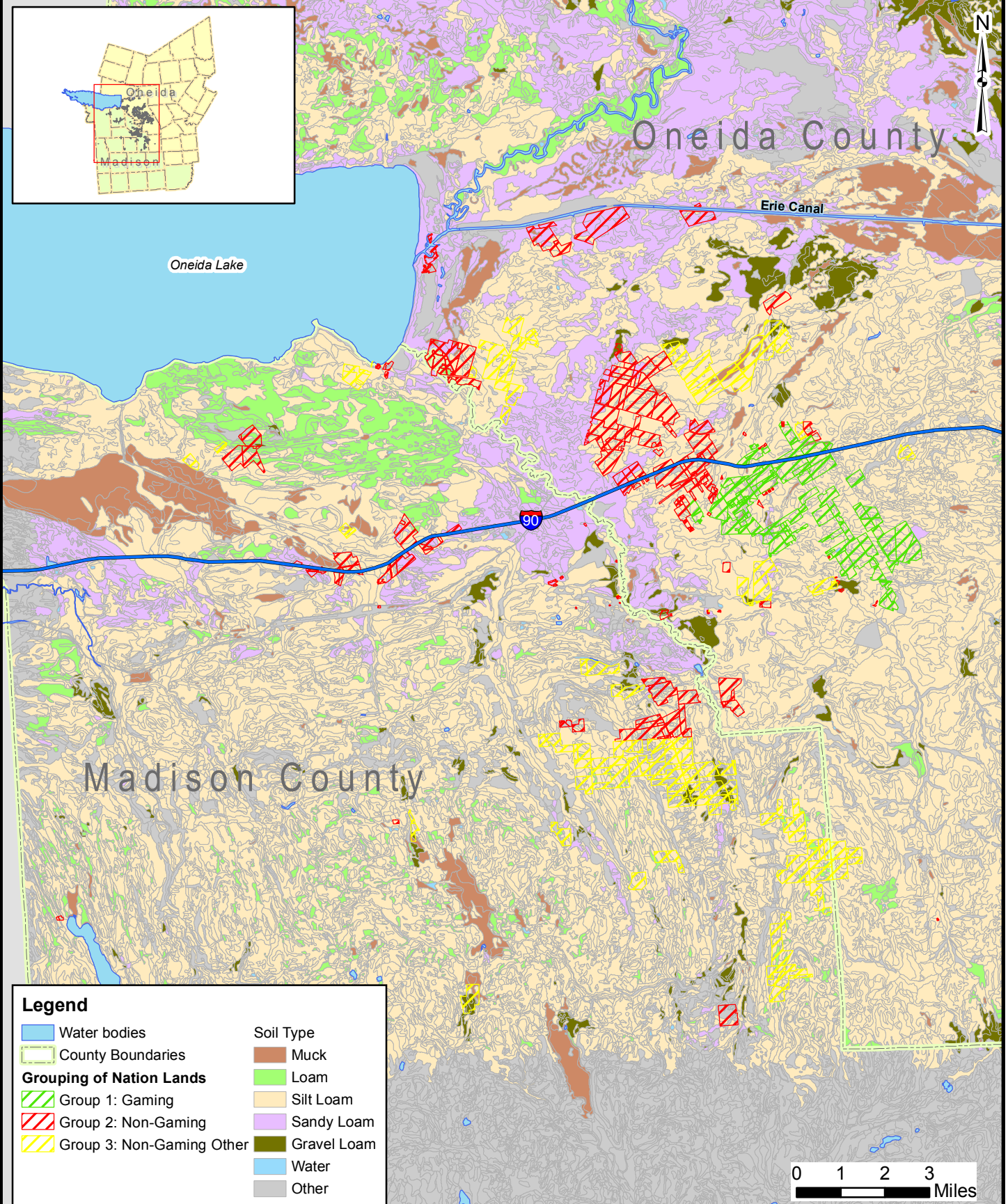
- Group 1: Gaming
- Group 2: Non-Gaming
- Group 3: Non-Gaming Other

Sources:  
 Topo Quad: TerraServer, USA  
 Nation Properties: Nation, 2005

**TOPOGRAPHY: VERONA QUADRANGLE**

**FIGURE  
3.2-11**

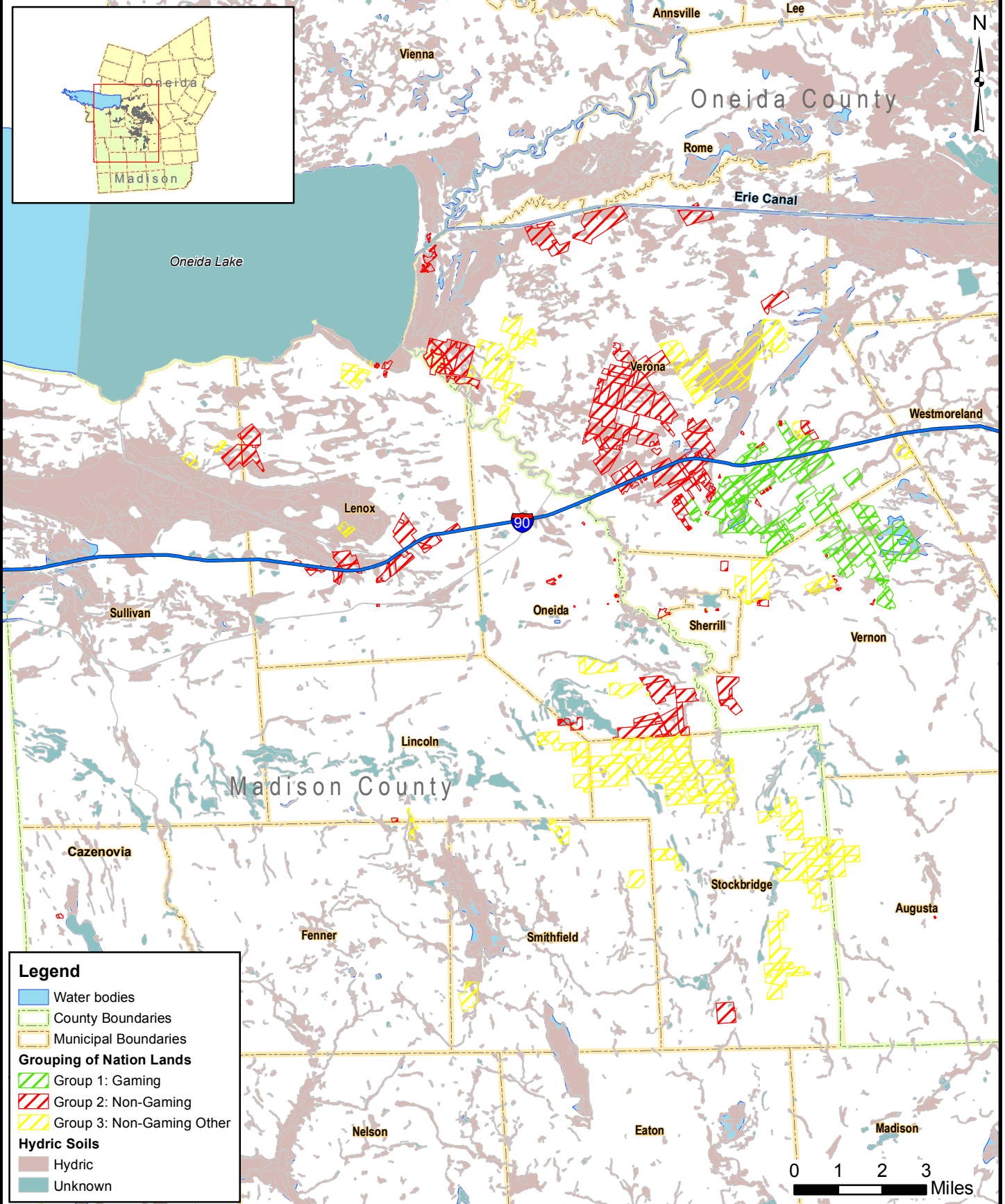
Map Document: G:\Projects\647701\DEIS\MXDs\Land\_Resources\Topography\Topography\_Verona.mxd  
10/17/2009 - 2:31:33 PM



Sources:  
Soils: SSURGO 2.1  
Nation Properties: Nation, 2005

**SOILS**

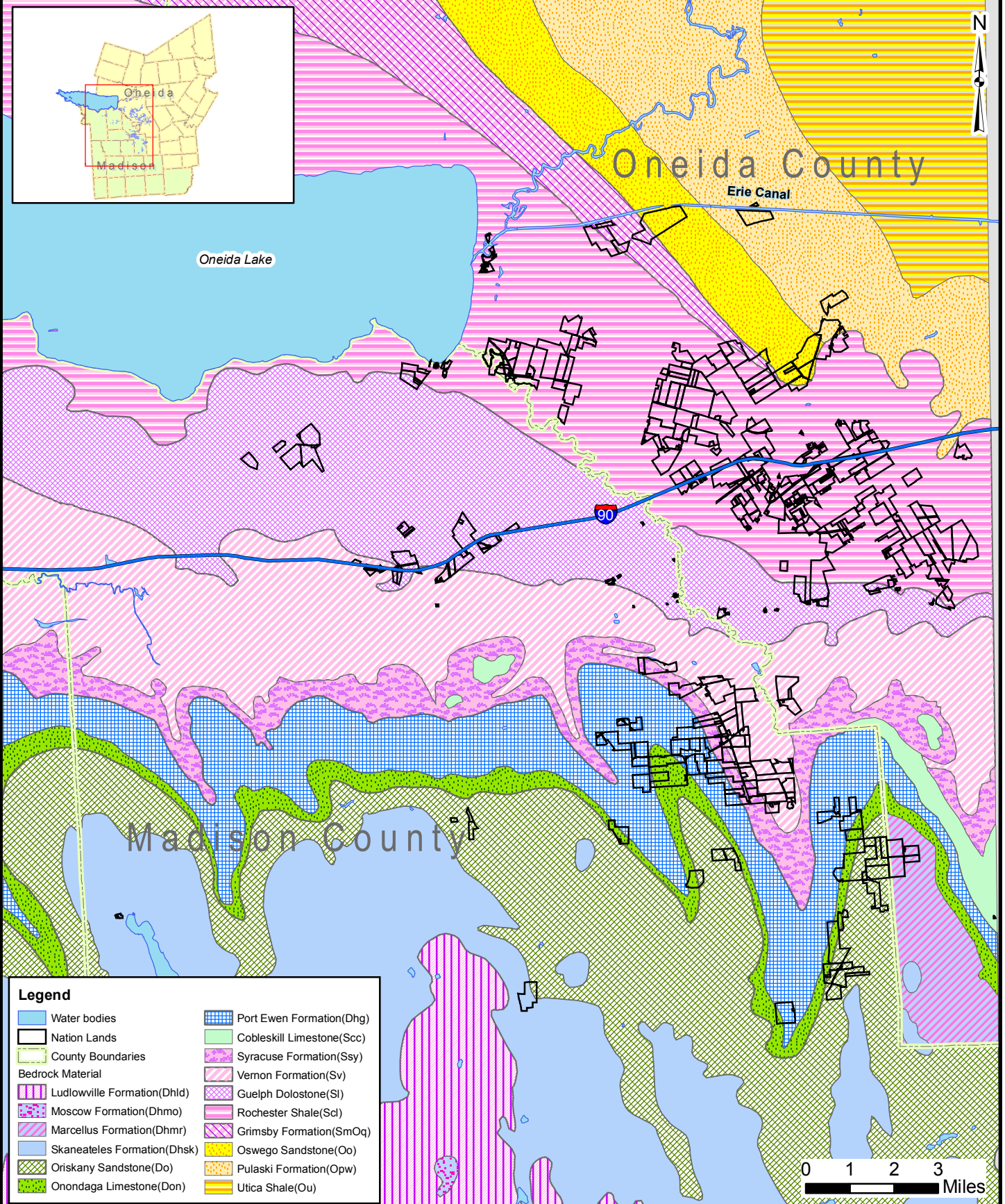
**FIGURE  
3.2-12**



Sources:  
Farmland: SSURGO 2.1  
Nation Properties: Nation, 2005

**HYDRIC SOILS**

**FIGURE  
3.2-13**



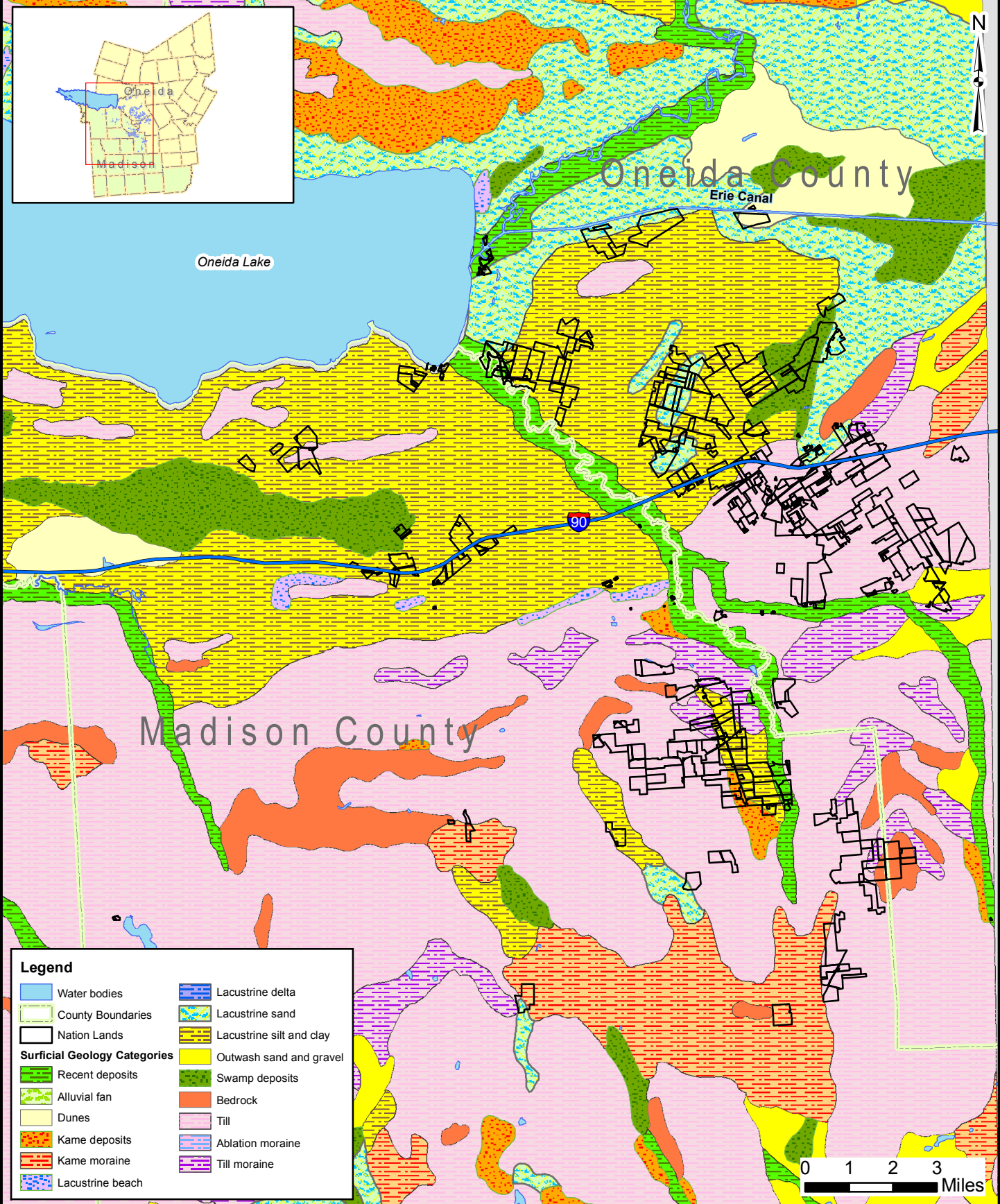
**Legend**

- |                             |                           |
|-----------------------------|---------------------------|
| Water bodies                | Port Ewen Formation(Dhg)  |
| Nation Lands                | Cobleskill Limestone(Scc) |
| County Boundaries           | Syracuse Formation(Ssy)   |
| <b>Bedrock Material</b>     |                           |
| Ludlowville Formation(Dhld) | Vernon Formation(Sv)      |
| Moscow Formation(Dhmo)      | Guelph Dolostone(Sl)      |
| Marcellus Formation(Dhmr)   | Rochester Shale(Scl)      |
| Skaneateles Formation(Dhsk) | Grimsby Formation(SmOq)   |
| Oriskany Sandstone(Do)      | Oswego Sandstone(Oo)      |
| Onondaga Limestone(Don)     | Pulaski Formation(Opw)    |
|                             | Utica Shale(Ou)           |

Sources:  
Nation Properties: Nation, 2005

**BEDROCK GEOLOGY**

**FIGURE  
3.2-14**



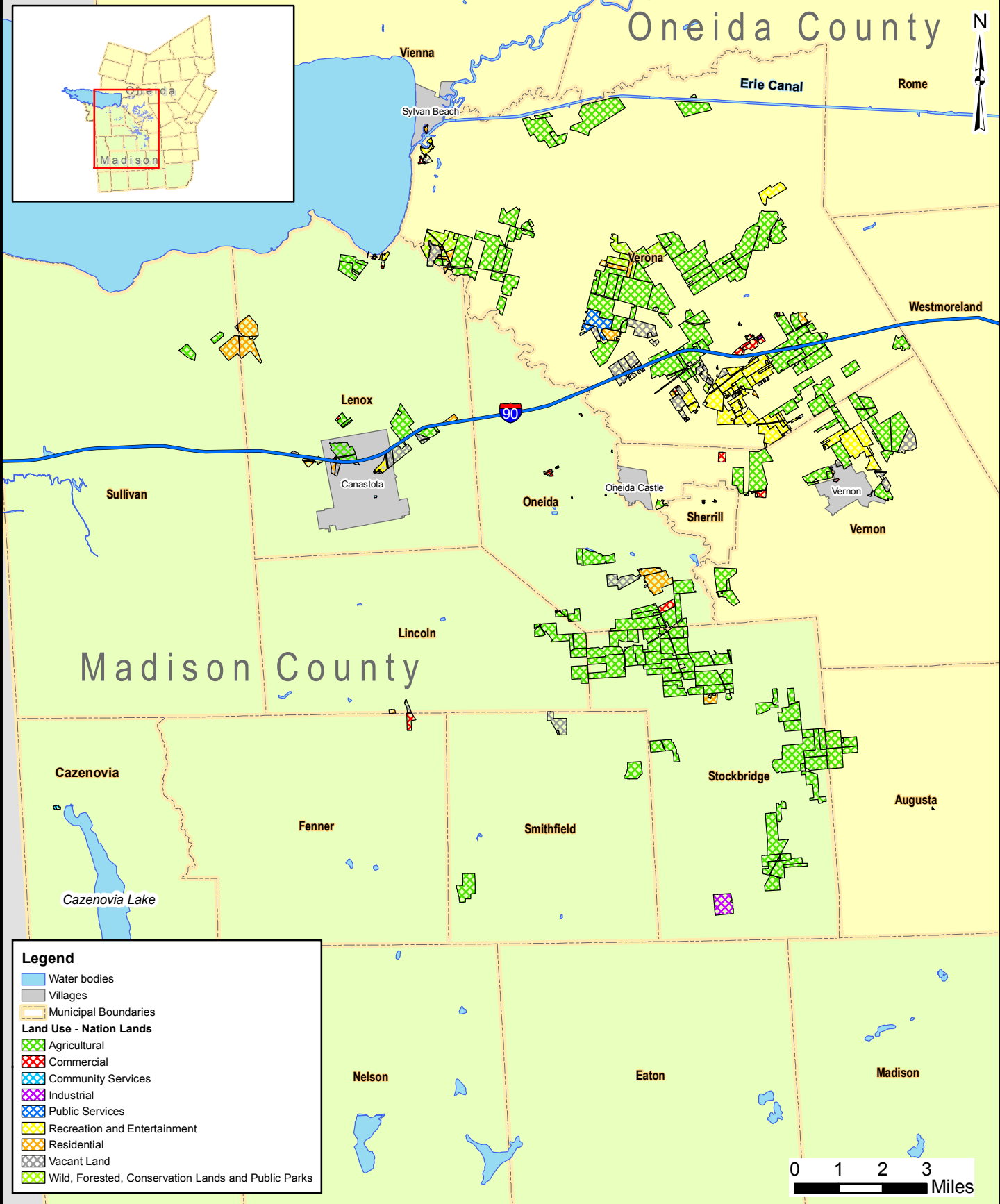
**Legend**

- |                                     |                          |
|-------------------------------------|--------------------------|
| Water bodies                        | Lacustrine delta         |
| County Boundaries                   | Lacustrine sand          |
| Nation Lands                        | Lacustrine silt and clay |
| <b>Surficial Geology Categories</b> |                          |
| Recent deposits                     | Outwash sand and gravel  |
| Alluvial fan                        | Swamp deposits           |
| Dunes                               | Bedrock                  |
| Kame deposits                       | Till                     |
| Kame moraine                        | Ablation moraine         |
| Lacustrine beach                    | Till moraine             |

Sources:  
Nation Properties: Nation, 2005

**SURFICIAL GEOLOGY**

**FIGURE  
3.2-15**



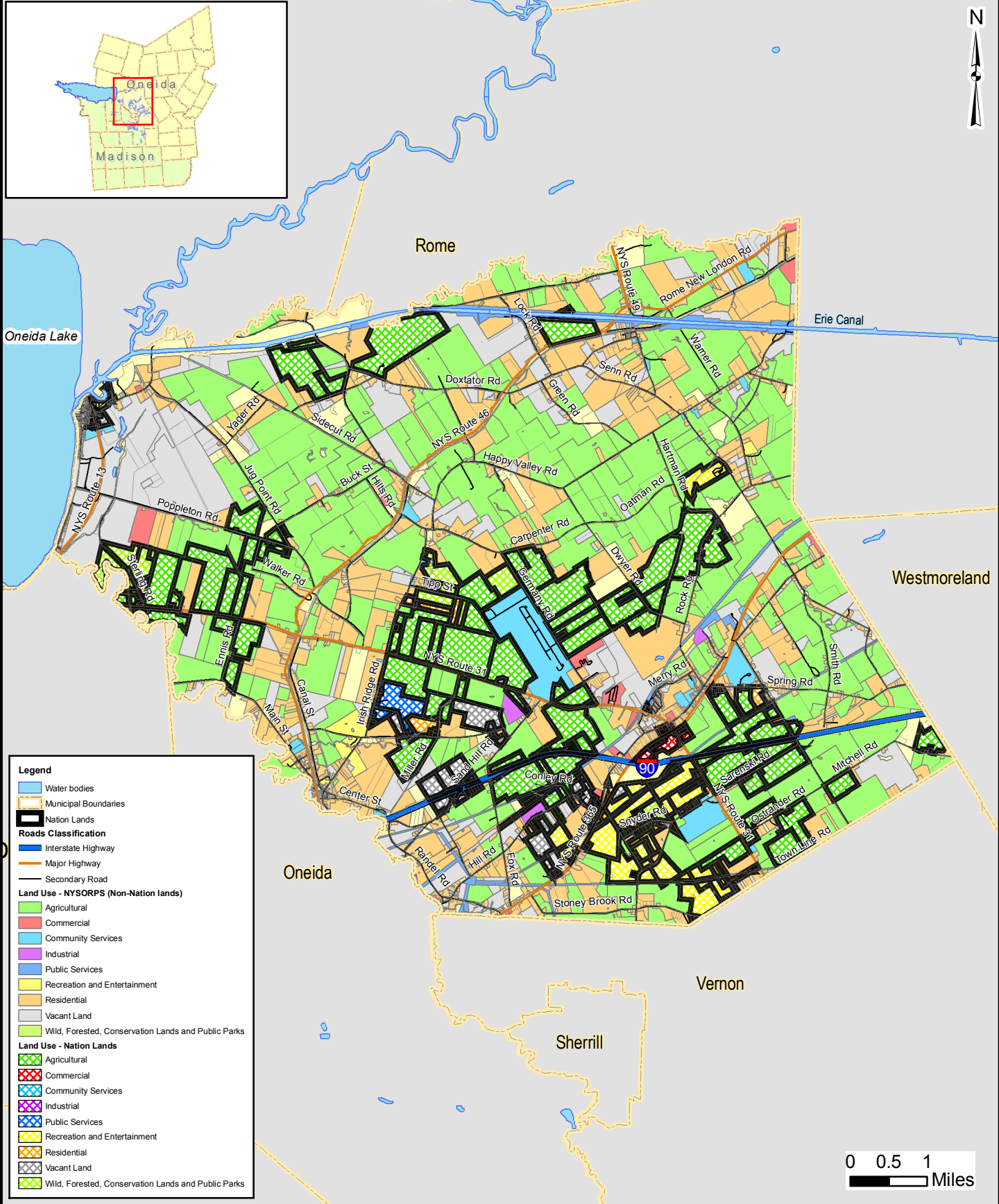
Map Document: (S:\Projects\5477001\DEIS\Map\Land\_Resources\LandUse\_Zoning1\_Regional\_LandUse\_Classification.mxd)  
10/17/2006 -- 2:48:56 PM

Sources:  
Water bodies: ESRI, 2002  
Municipalities: CUGIR, 2005  
Villages: NY-ESD, 2005  
Nation Properties: Nation, 2005

**LAND USE - NATION LANDS**

**FIGURE  
3.2-16**

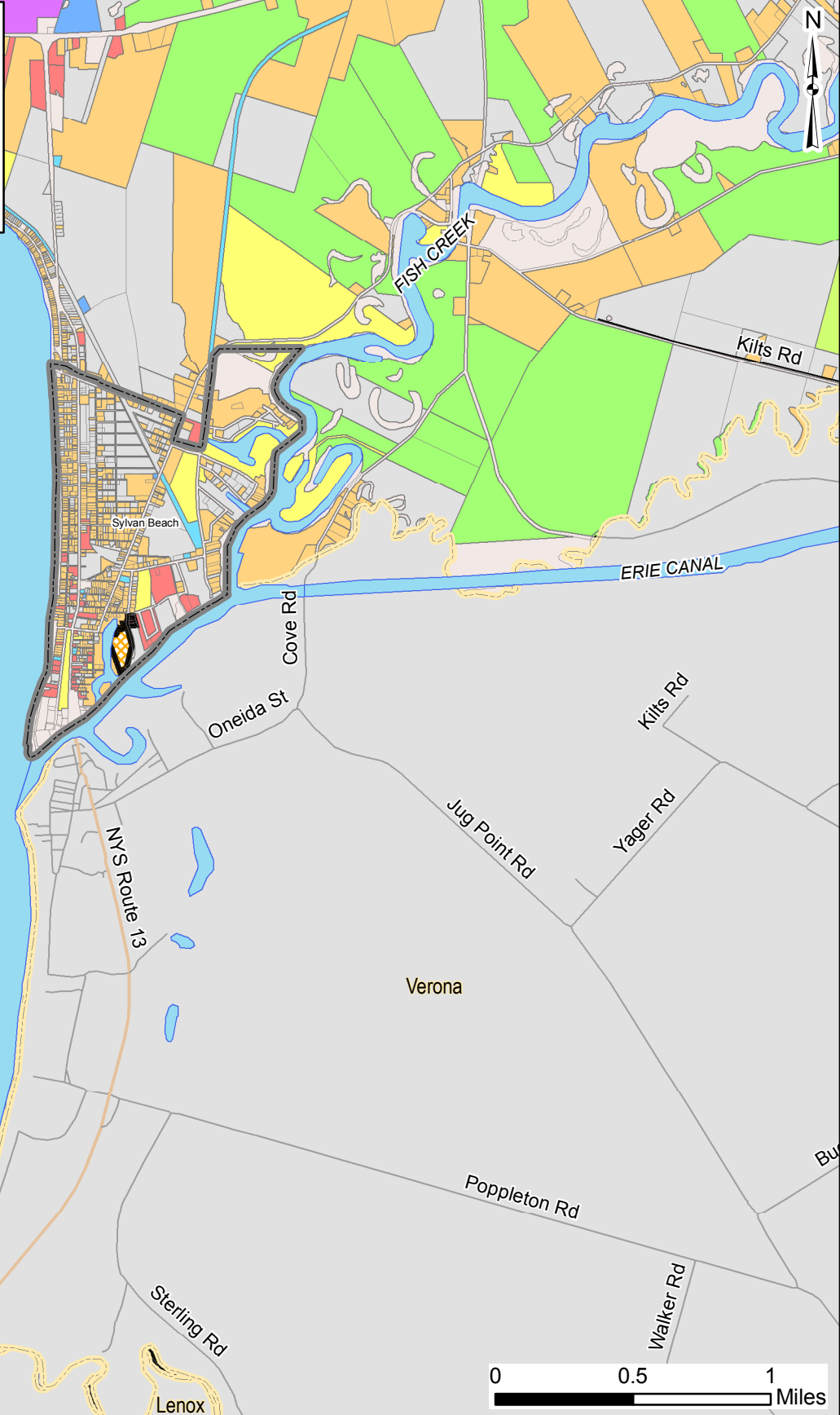




Sources:  
ORPS: 2004  
Observed: October, 2005

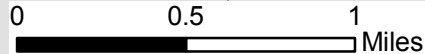
**LAND USE: TOWN OF VERONA**

**FIGURE  
3.2-17**



**Legend**

- Water bodies
- Villages
- Municipal Boundaries
- Nation Lands
- Roads Classification**
- Interstate Highway
- Major Highway
- Secondary Road
- Land Use - NYSORPS (Non-Nation lands)**
- Agricultural
- Commercial
- Community Services
- Industrial
- Public Services
- Recreation and Entertainment
- Residential
- Vacant Land
- Wild, Forested, Conservation Lands and Public Parks
- Land Use - Nation Lands**
- Agricultural
- Commercial
- Community Services
- Industrial
- Public Services
- Recreation and Entertainment
- Residential
- Vacant Land
- Wild, Forested, Conservation Lands and Public Parks

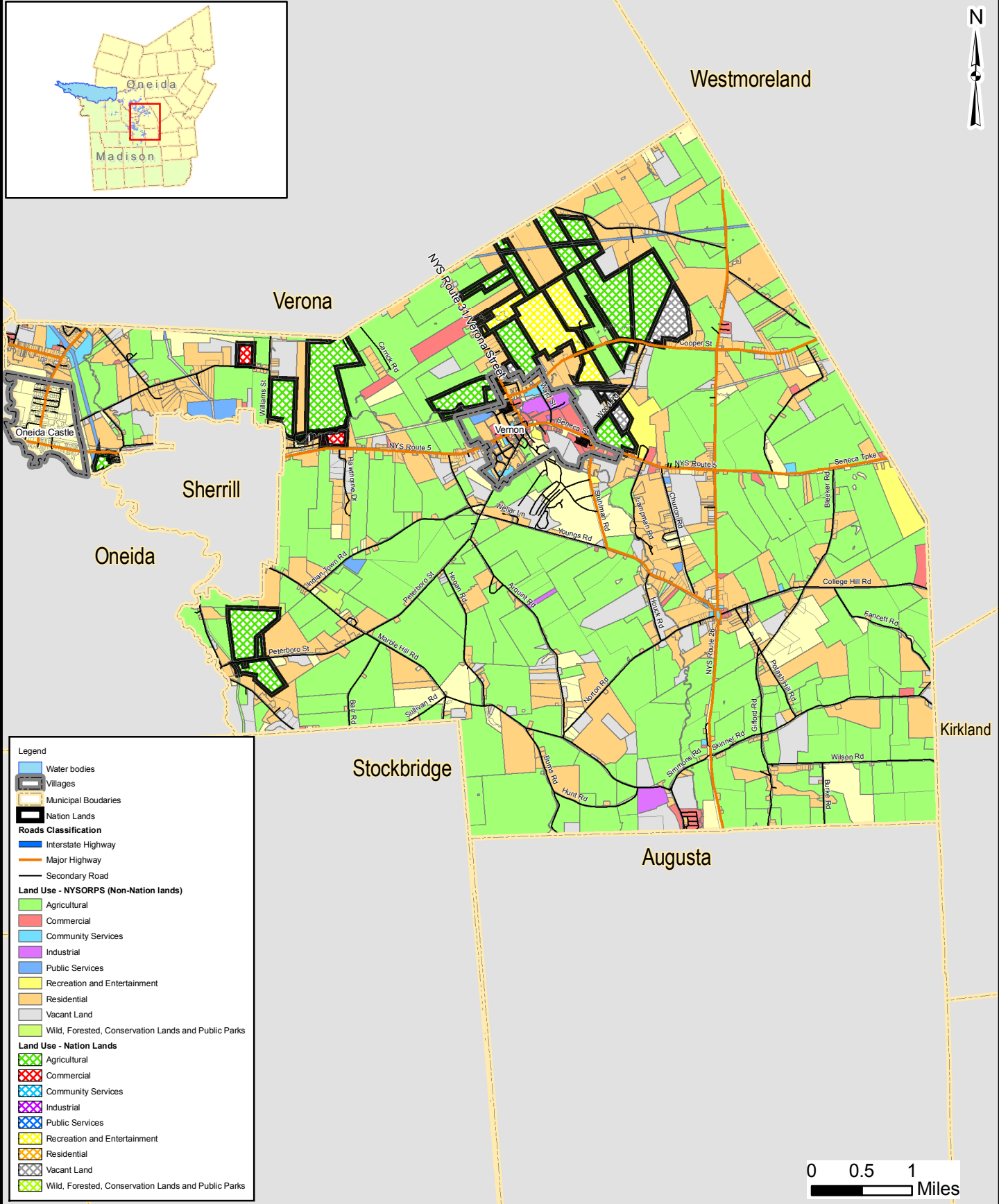


Sources:  
ORPS: 2004  
Observed: October, 2005

**LAND USE: TOWN OF VIENNA**

**FIGURE  
3.2-18**

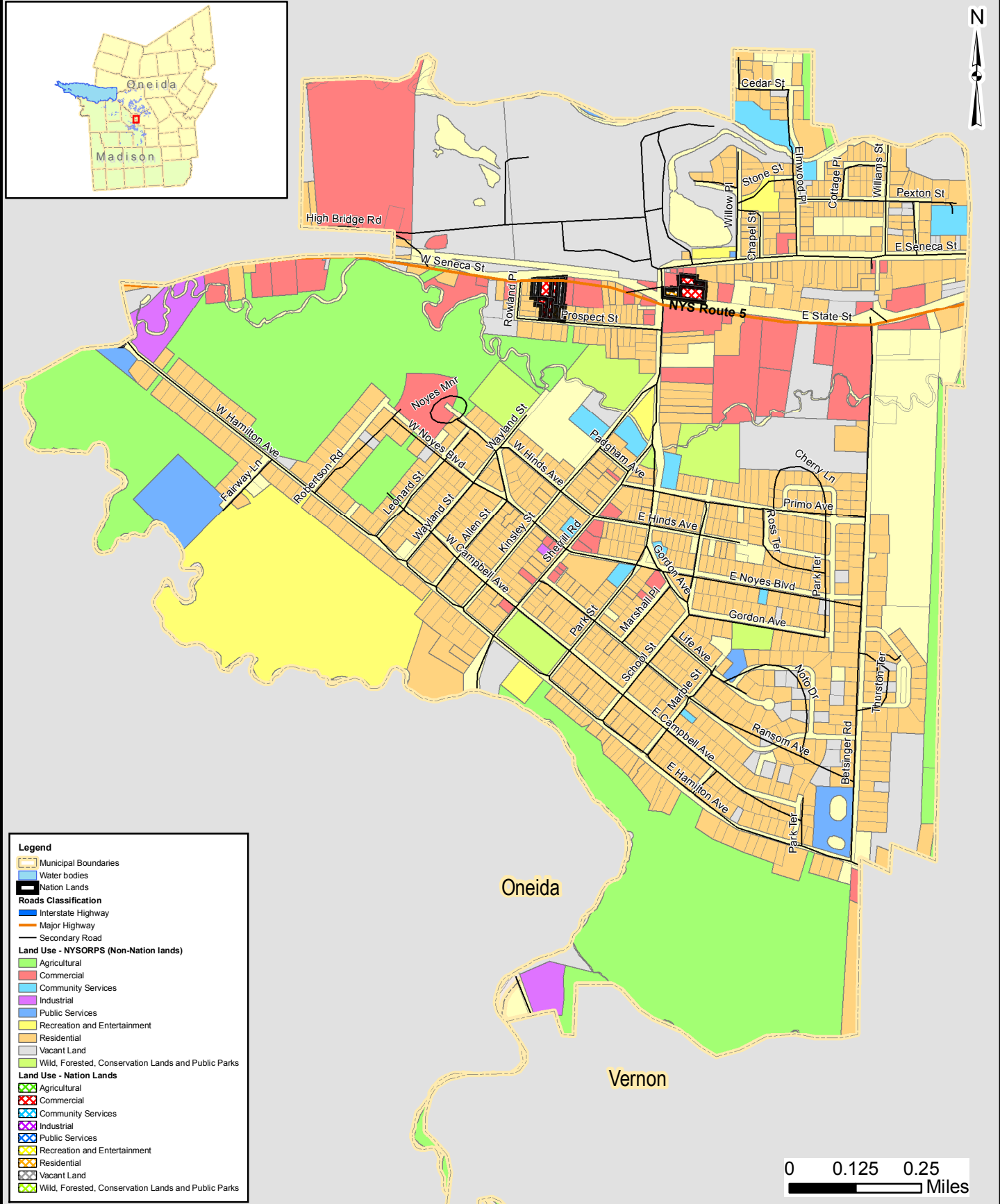
Map Document: (S:\Projects\647701\DE\SMX\9a\Land\_Resources\LandUse\_Zoning3\_Vierma\_Municipality\_LandUse.mxd) 10/17/2006 - 3:21:08 PM



Sources:  
ORPS: 2004  
Observed: October, 2005

### LAND USE: TOWN OF VERNON

**FIGURE  
3.2-19**



**Legend**

- Municipal Boundaries
- Water bodies
- Nation Lands

**Roads Classification**

- Interstate Highway
- Major Highway
- Secondary Road

**Land Use - NYSORPS (Non-Nation lands)**

- Agricultural
- Commercial
- Community Services
- Industrial
- Public Services
- Recreation and Entertainment
- Residential
- Vacant Land
- Wild, Forested, Conservation Lands and Public Parks

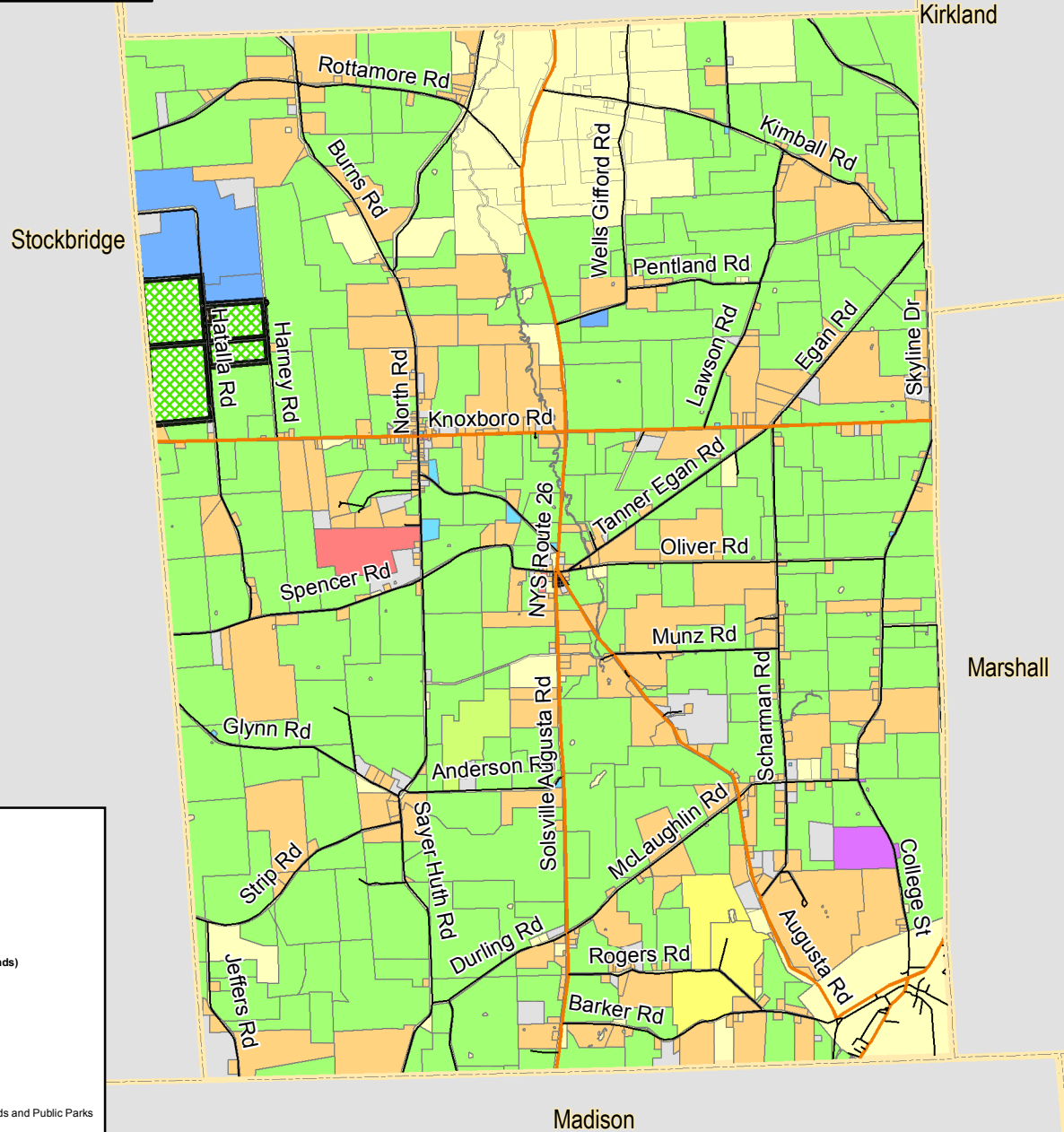
**Land Use - Nation Lands**

- Agricultural
- Commercial
- Community Services
- Industrial
- Public Services
- Recreation and Entertainment
- Residential
- Vacant Land
- Wild, Forested, Conservation Lands and Public Parks

Sources:  
ORPS: 2004  
Observed: October, 2005

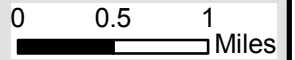
**LAND USE: CITY OF SHERRILL**

**FIGURE  
3.2-20**



**Legend**

- Water bodies
- Municipalities
- Nation Lands
- Roads Classification**
- Interstate Highway
- Major Highway
- Secondary Road
- Land Use - NYSORPS (Non-Nation lands)**
- Agricultural
- Commercial
- Community Services
- Industrial
- Public Services
- Recreation and Entertainment
- Residential
- Vacant Land
- Wild, Forested, Conservation Lands and Public Parks
- Land Use - Nation Lands**
- Agricultural
- Commercial
- Community Services
- Industrial
- Public Services
- Recreation and Entertainment
- Residential
- Vacant Land
- Wild, Forested, Conservation Lands and Public Parks



Sources:  
ORPS: 2004  
Observed: October, 2005

**LAND USE: TOWN OF AUGUSTA**

**FIGURE  
3.2-21**



Lenox

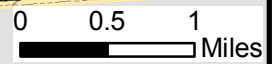
Verona

Vernon

Sherrill

Lincoln

Stockbridge



**Legend**

- Municipal Boundaries
- Water bodies
- Nation Lands

**Roads Classification**

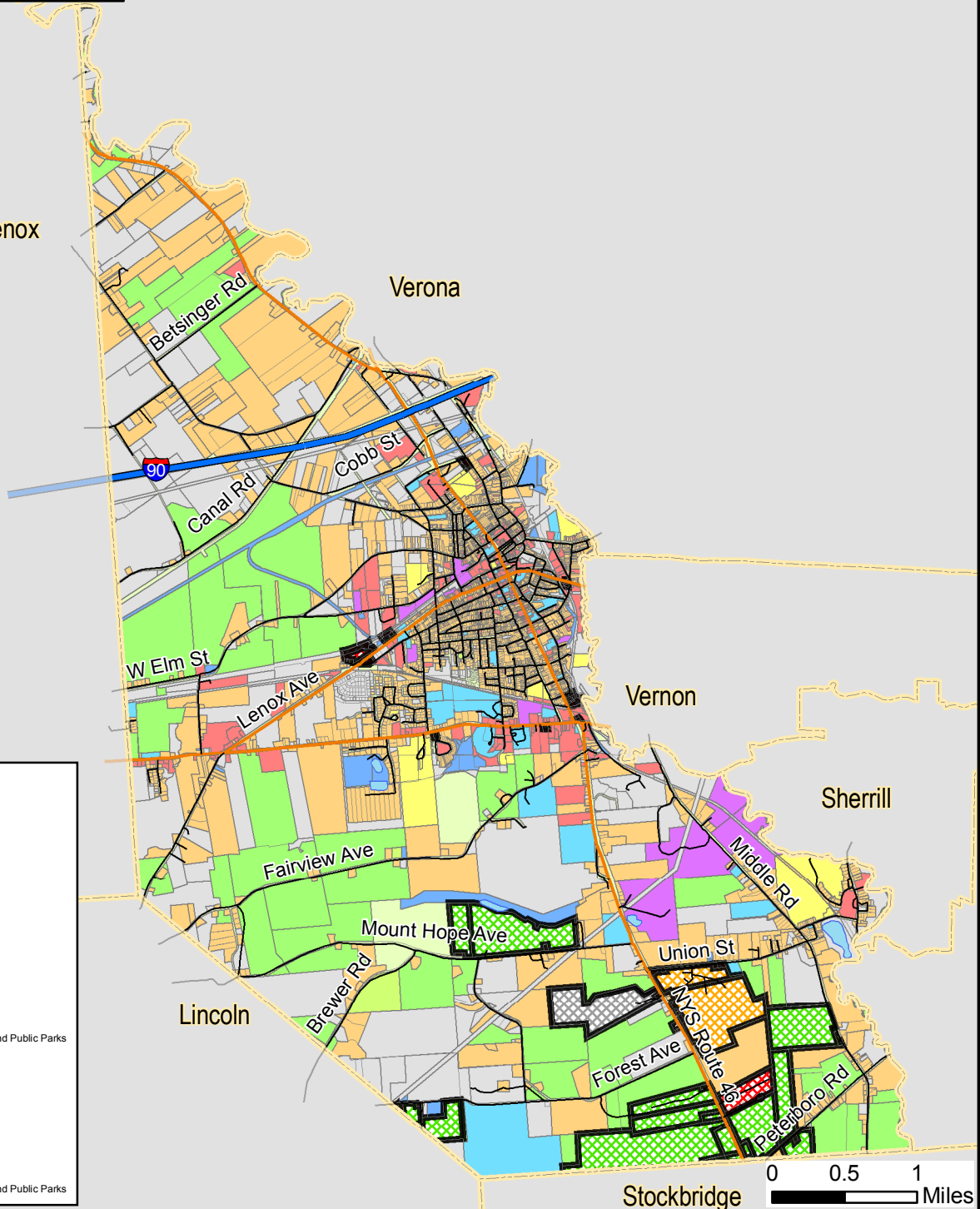
- Interstate Highway
- Major Highway
- Secondary Road

**Land Use - NYSORPS (Non-Nation lands)**

- Agricultural
- Commercial
- Community Services
- Industrial
- Public Services
- Recreation and Entertainment
- Residential
- Vacant Land
- Wild, Forested, Conservation Lands and Public Parks

**Land Use - Nation Lands**

- Agricultural
- Commercial
- Community Services
- Industrial
- Public Services
- Recreation and Entertainment
- Residential
- Vacant Land
- Wild, Forested, Conservation Lands and Public Parks



Sources:  
ORPS: 2004  
Observed: October, 2005

**LAND USE: CITY OF ONEIDA**

**FIGURE  
3.2-22**



**Legend**

- Water bodies
- Villages
- Municipal Boundaries
- Nation Lands

**Roads Classification**

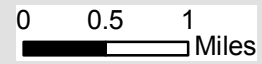
- Interstate Highway
- Major Highway
- Secondary Road

**Land Use - NYSORPS (Non-Nation lands)**

- Agricultural
- Commercial
- Community Services
- Industrial
- Public Services
- Recreation and Entertainment
- Residential
- Vacant Land
- Wild, Forested, Conservation Lands and Public Parks

**Land Use - Nation Lands**

- Agricultural
- Commercial
- Community Services
- Industrial
- Public Services
- Recreation and Entertainment
- Residential
- Vacant Land
- Wild, Forested, Conservation Lands and Public Parks

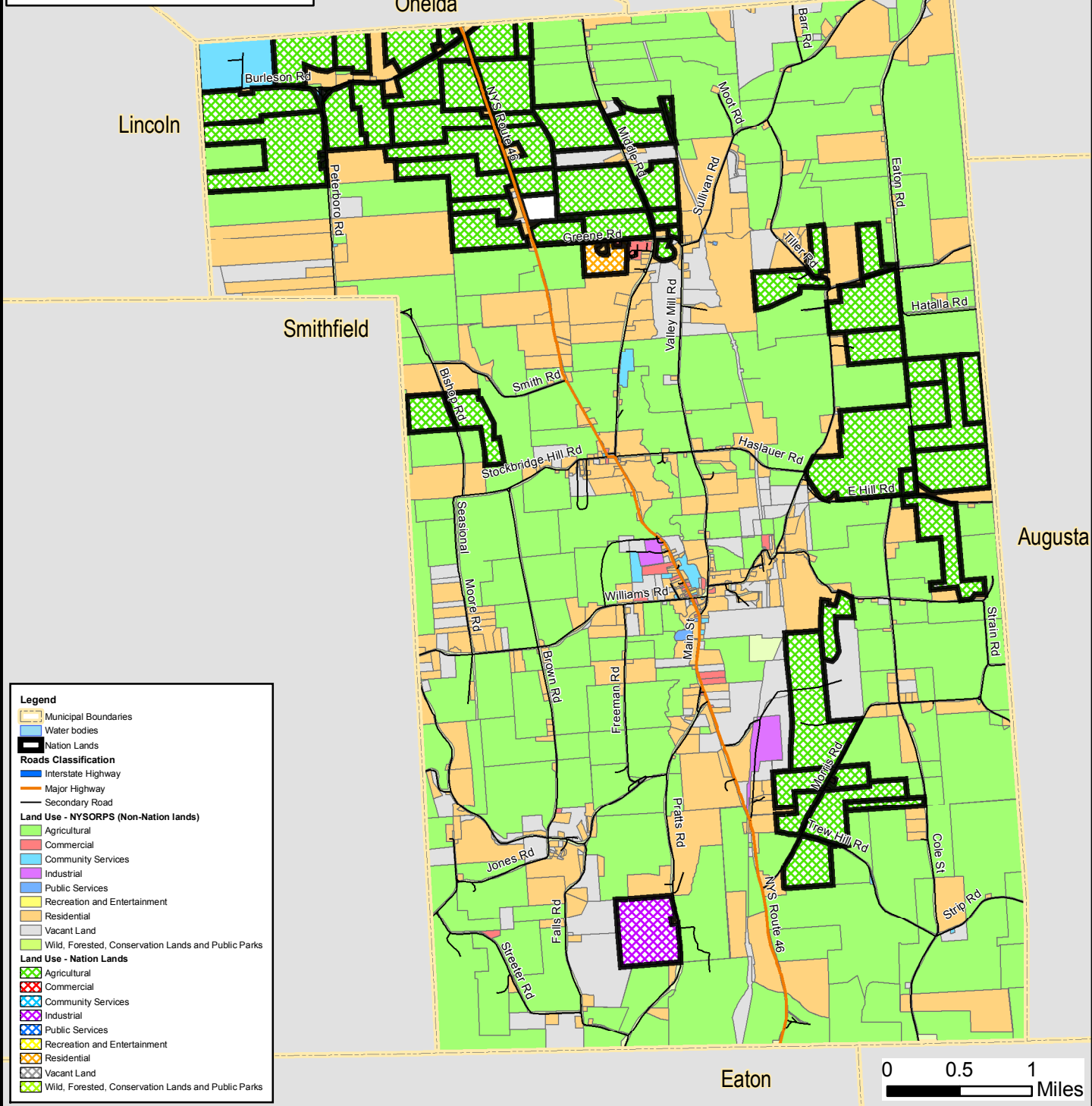


Map Document: (S:\Projects\647701\DE\SMX\9a\Land\_Resources\LandUse\_Zoning8\_Lenox\_Municipality\_LandUse.mxd)  
10/17/2006 - 3:37:13 PM

Sources:  
ORPS: 2004  
Observed: October, 2005

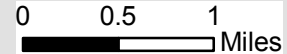
### LAND USE: TOWN OF LENOX

**FIGURE  
3.2-23**



**Legend**

- Municipal Boundaries
- Water bodies
- Nation Lands
- Roads Classification**
  - Interstate Highway
  - Major Highway
  - Secondary Road
- Land Use - NYSORPS (Non-Nation lands)**
  - Agricultural
  - Commercial
  - Community Services
  - Industrial
  - Public Services
  - Recreation and Entertainment
  - Residential
  - Vacant Land
  - Wild, Forested, Conservation Lands and Public Parks
- Land Use - Nation Lands**
  - Agricultural
  - Commercial
  - Community Services
  - Industrial
  - Public Services
  - Recreation and Entertainment
  - Residential
  - Vacant Land
  - Wild, Forested, Conservation Lands and Public Parks



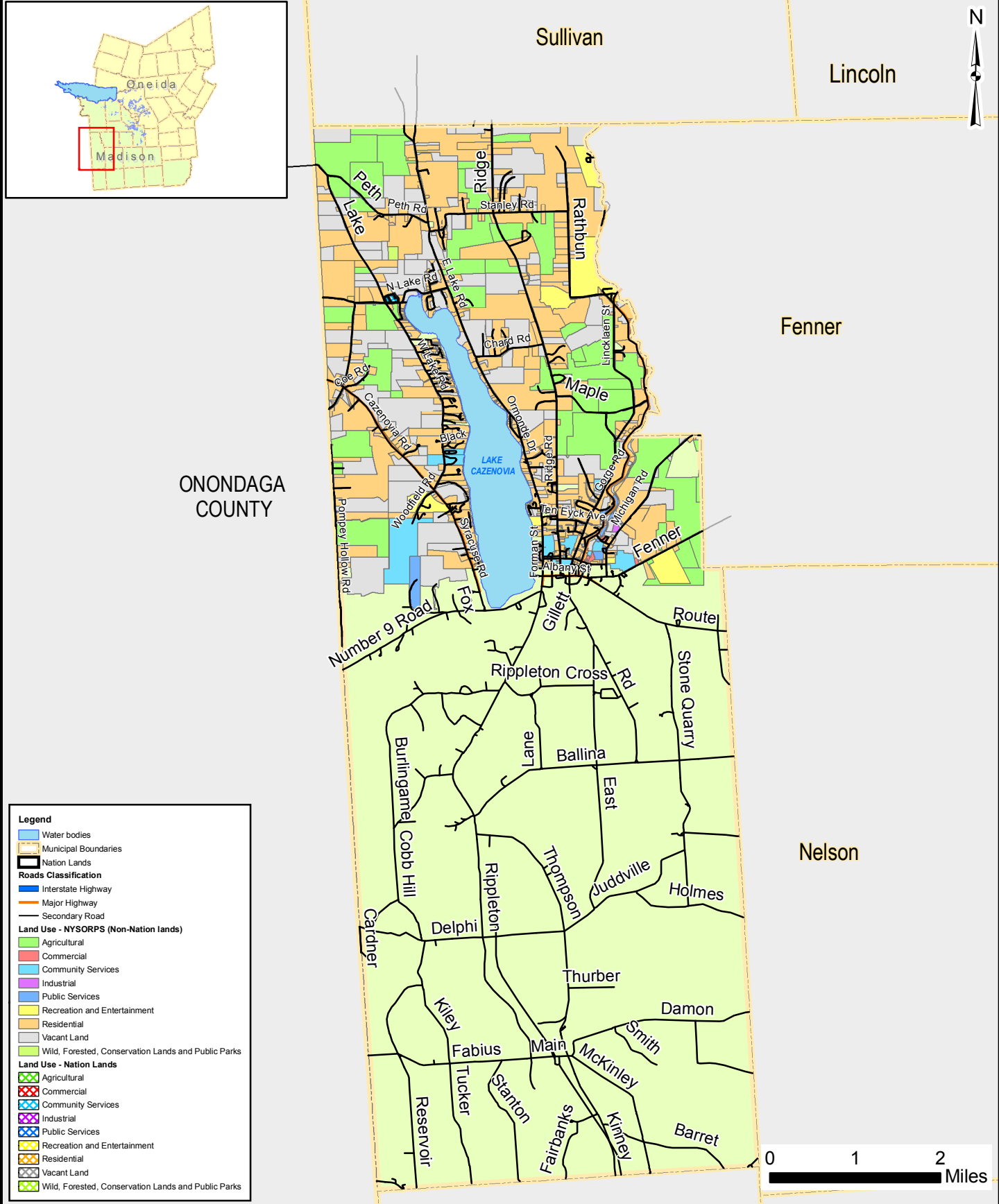
Sources:  
ORPS: 2004  
Observed: October, 2005

**LAND USE: TOWN OF STOCKBRIDGE**

**FIGURE  
3.2-24**

Map Document: (S:\Projects\647701\DE\SMX\9a\_Land\_Resources\Landuse\_Zoning\9\_Stockbridge\_Municipality\_LandUse.mxd)  
10/17/2006 - 3:38:18 PM

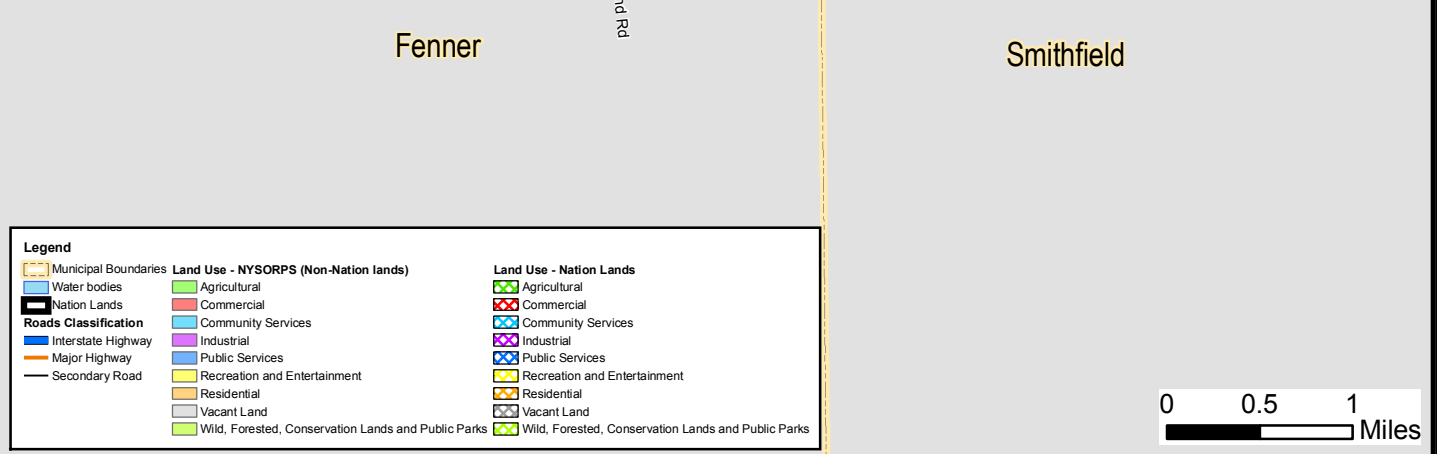
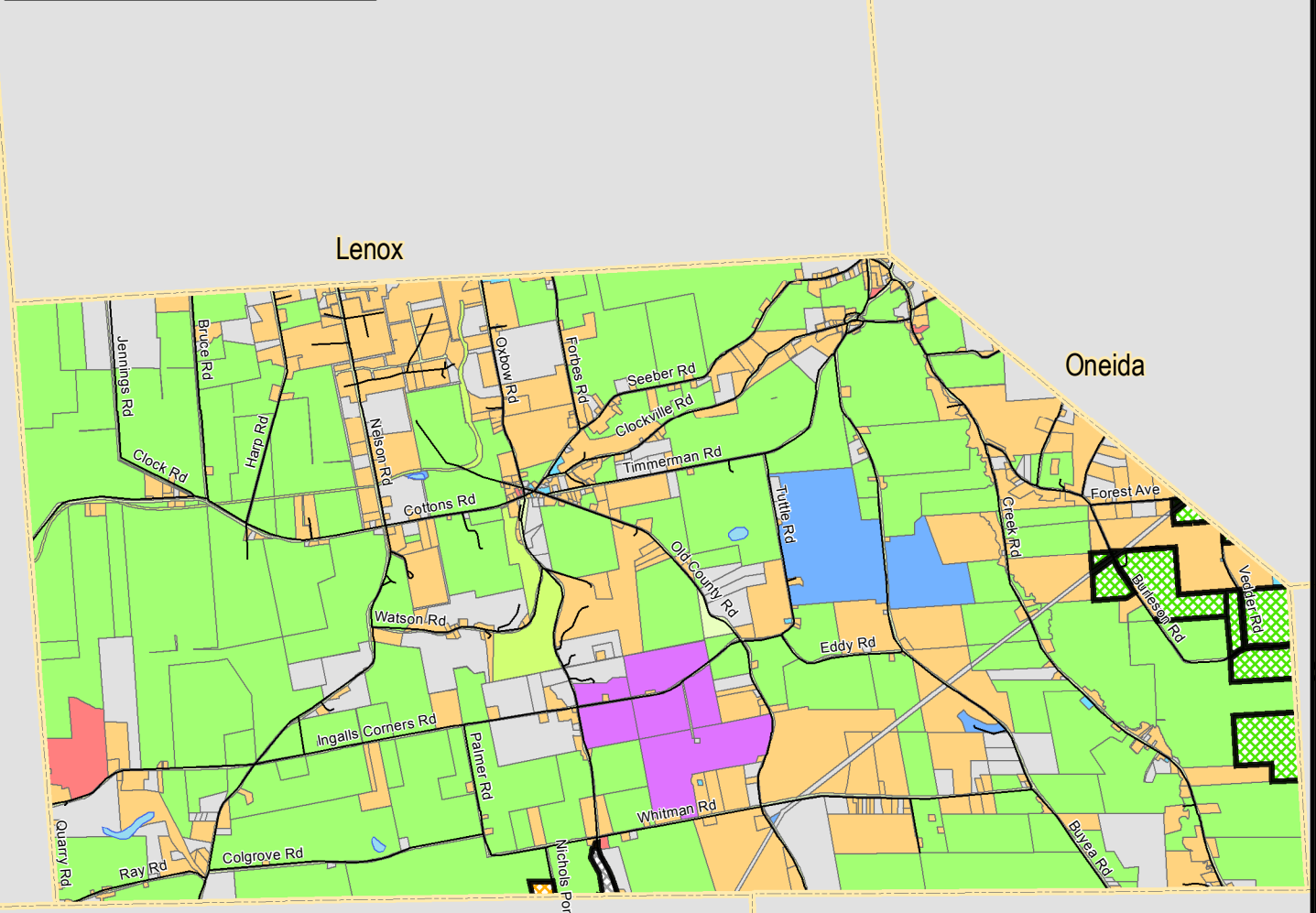




Sources:  
ORPS: 2004  
Observed: October, 2005

**LAND USE: TOWN OF CAZENOVIA**

**FIGURE  
3.2-25**

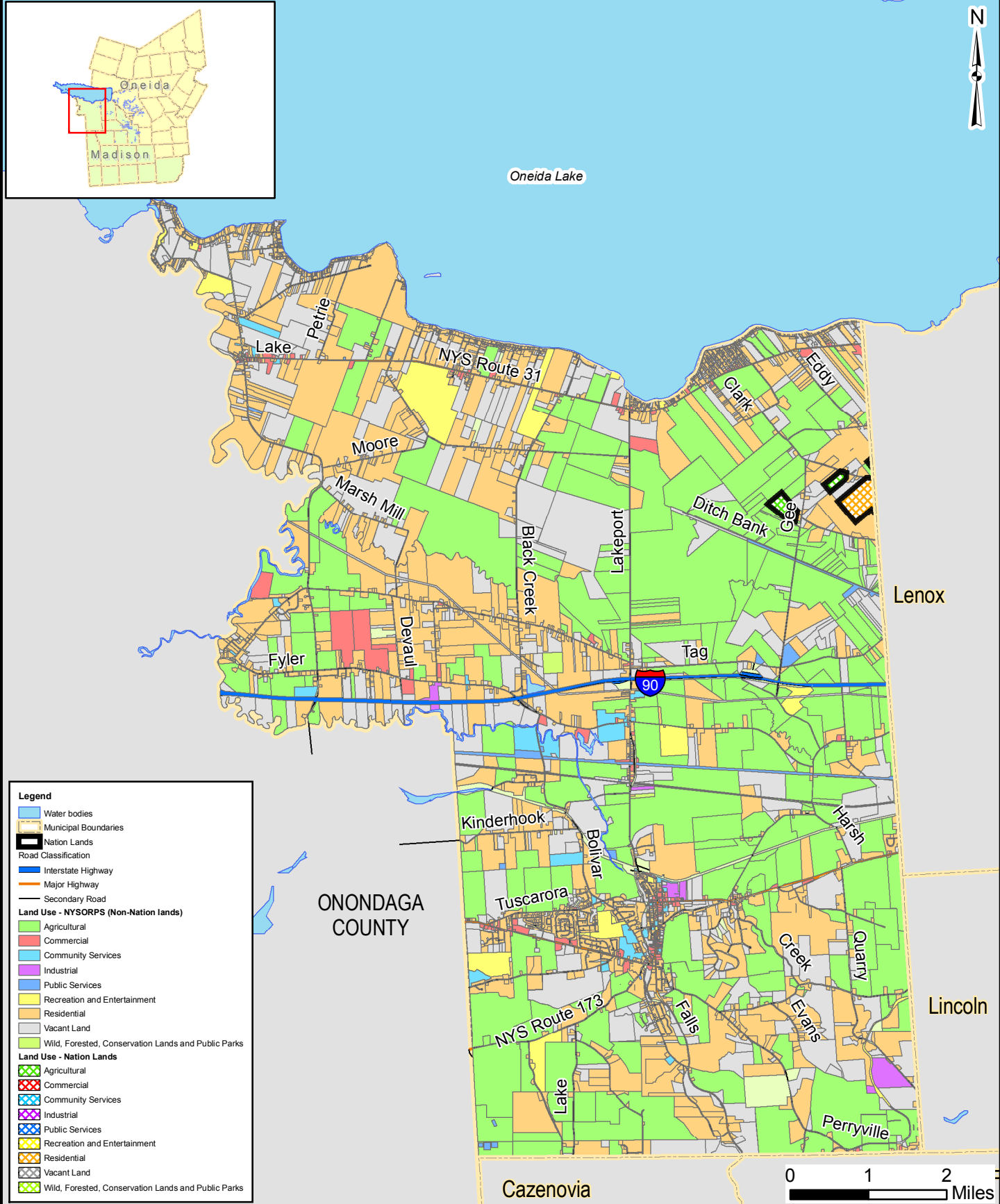


Map Document: (S:\Projects\647701\DEIS\Map\Land\_Resources\Landuse\_Zoning\11\_Lincoln\_Municipality\_LandUse.mxd) 10/17/2006 - 3:45:14 PM

Sources:  
ORPS: 2004  
Observed: October, 2005

**LAND USE: TOWN OF LINCOLN**

**FIGURE  
3.2-26**



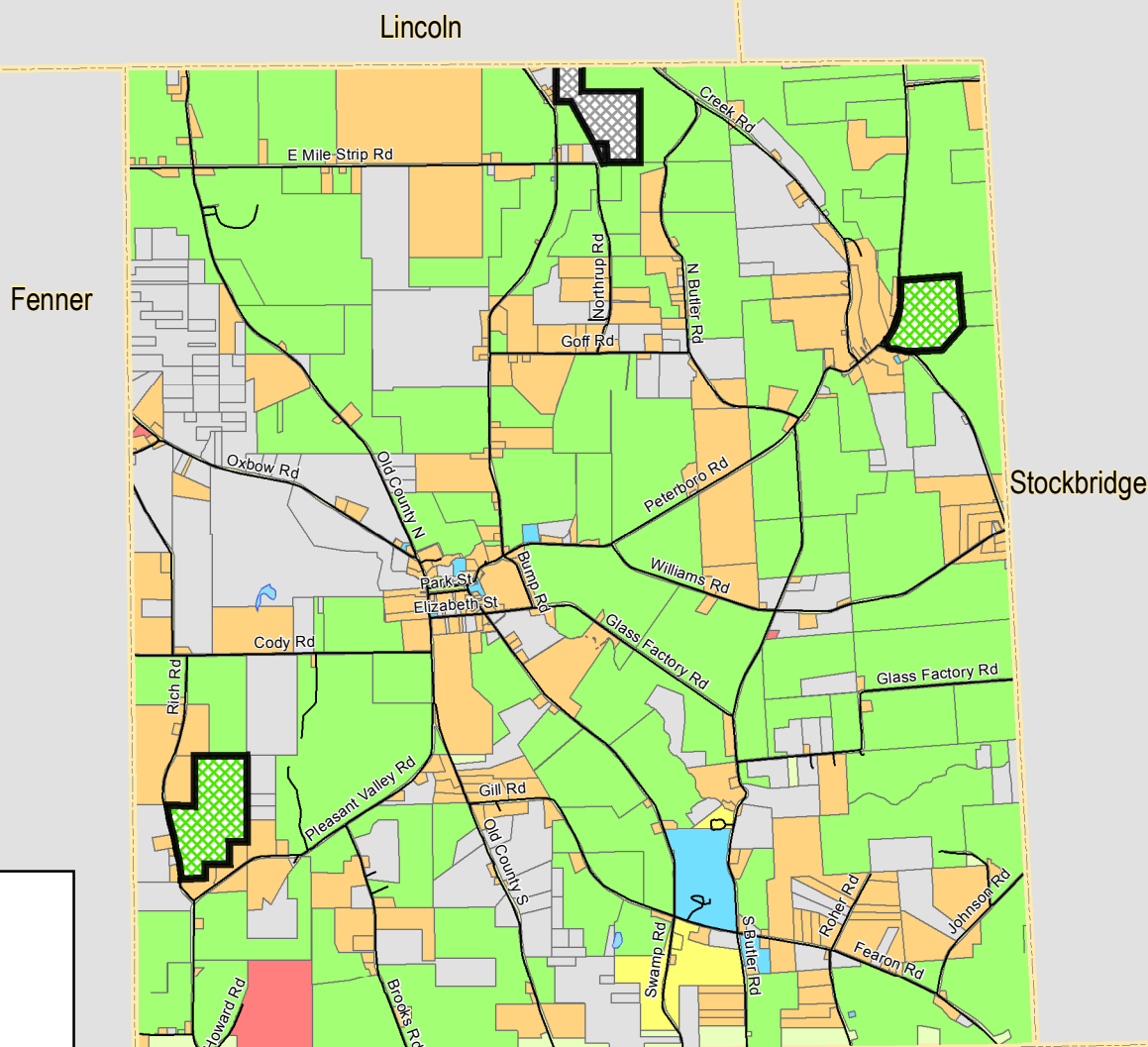
**Legend**

- Water bodies
- Municipal Boundaries
- Nation Lands
- Road Classification
  - Interstate Highway
  - Major Highway
  - Secondary Road
- Land Use - NYSORPS (Non-Nation lands)
  - Agricultural
  - Commercial
  - Community Services
  - Industrial
  - Public Services
  - Recreation and Entertainment
  - Residential
  - Vacant Land
  - Wild, Forested, Conservation Lands and Public Parks
- Land Use - Nation Lands
  - Agricultural
  - Commercial
  - Community Services
  - Industrial
  - Public Services
  - Recreation and Entertainment
  - Residential
  - Vacant Land
  - Wild, Forested, Conservation Lands and Public Parks

Sources:  
ORPS: 2004  
Observed: October, 2005

**LAND USE: TOWN OF SULLIVAN**

**FIGURE  
3.2-27**



**Legend**

- Municipal Boundaries
- Water bodies
- Nation Lands
- Roads Classification**
  - Interstate Highway
  - Major Highway
  - Secondary Road
- Land Use - NYSORPS (Non-Nation lands)**
  - Agricultural
  - Commercial
  - Community Services
  - Industrial
  - Public Services
  - Recreation and Entertainment
  - Residential
  - Vacant Land
  - Wild, Forested, Conservation Lands and Public Parks
- Land Use - Nation Lands**
  - Agricultural
  - Commercial
  - Community Services
  - Industrial
  - Public Services
  - Recreation and Entertainment
  - Residential
  - Vacant Land
  - Wild, Forested, Conservation Lands and Public Parks



Sources:  
ORPS: 2004  
Observed: October, 2005

### LAND USE: TOWN OF SMITHFIELD

**FIGURE  
3.2-28**

Map Document: (S:\Projects\647701\DEIS\MapDocs\Land\_Resources\LandUse\_Zoning\13\_Smithfield\_Municipality\_LandUse.mxd)  
10/17/2006 - 3:48:48 PM

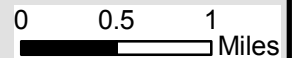
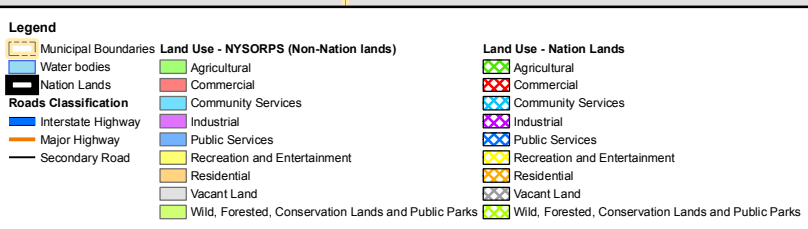


Sullivan Lincoln

Smithfield

Cazenovia

Nelson



Sources:  
ORPS: 2004  
Observed: October, 2005

**LAND USE: TOWN OF FENNER**

**FIGURE  
3.2-29**