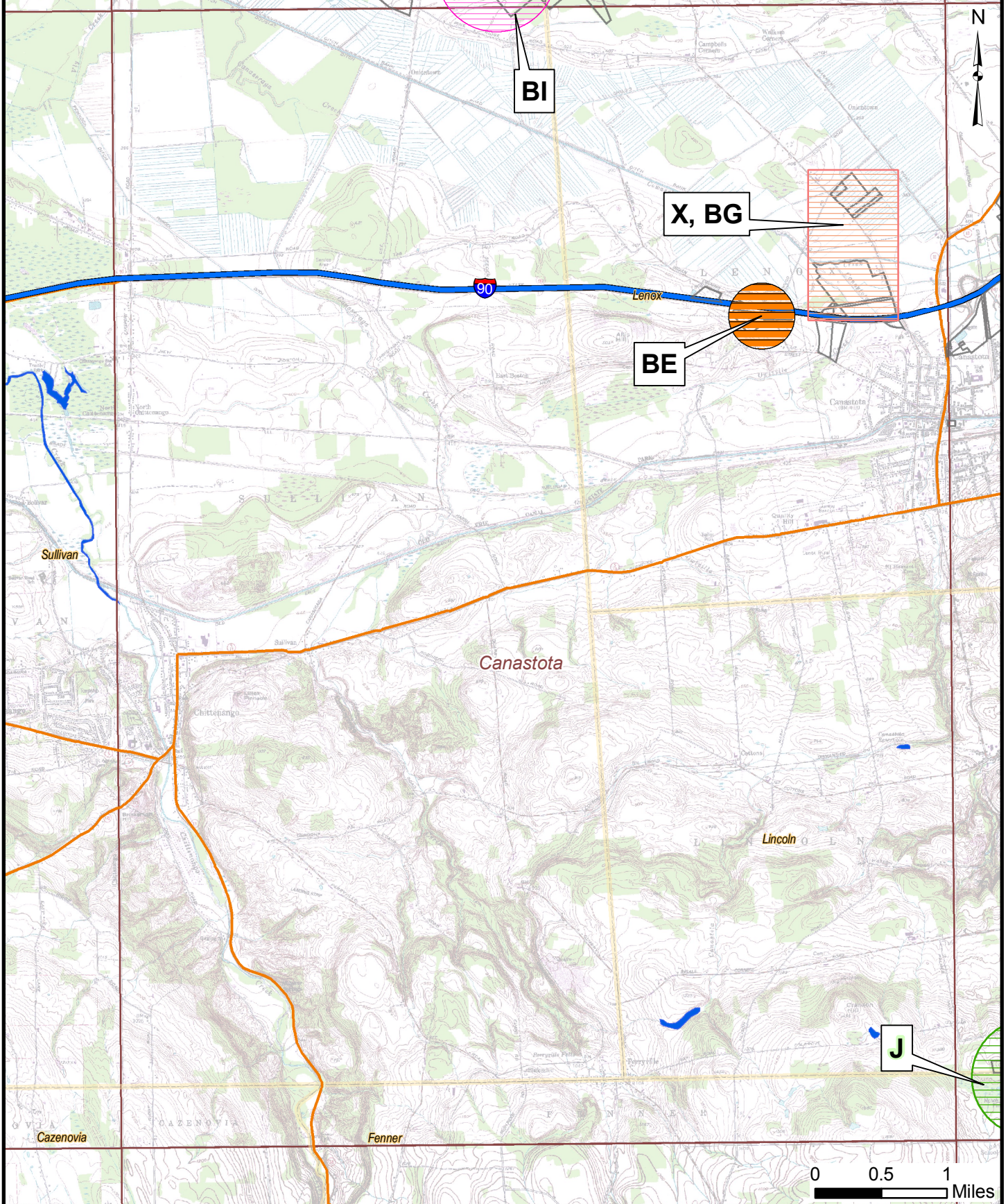


Sources:
Topo Quad: TerraServer, USA
Nation Properties: Nation, 2005

KEY MAP: GENERAL LOCATIONS OF PREVIOUSLY IDENTIFIED ARCHAEOLOGICAL SITES

FIGURE D-1

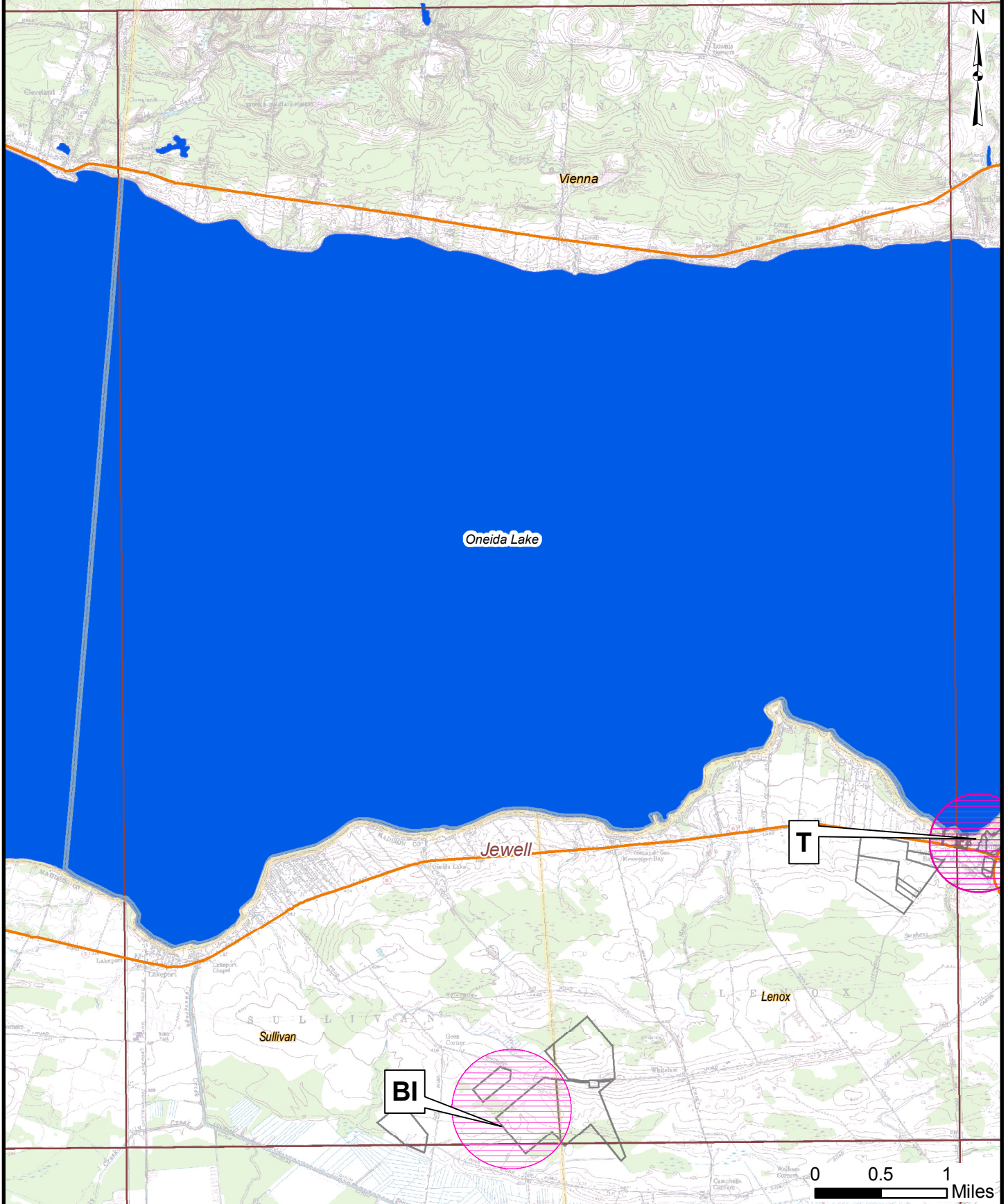
Map Document: G:\Projects\647701\DEIS\MXDs\Archaeological_Historical\Cultural\Archaeological_Appendix\KeyMap_archaeological_appendix.mxd
10/16/2008 - 10:32:58 AM



Source:
Nation Properties: Nation, 2005

**GENERAL LOCATIONS OF PREVIOUSLY IDENTIFIED
ARCHAEOLOGICAL SITES: CANASTOTA QUADRANGLE**

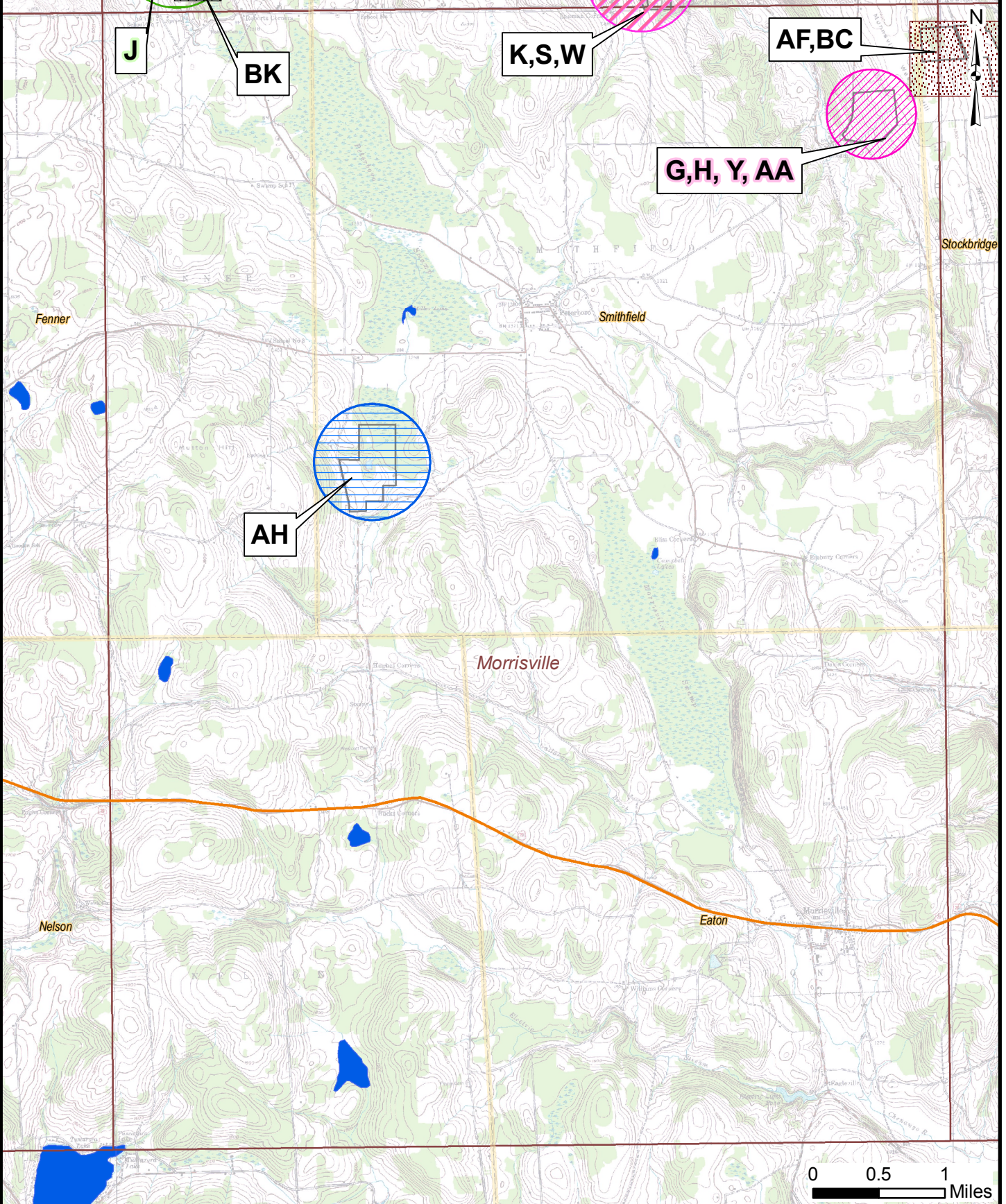
**FIGURE
D-2**



Source:
Nation Properties: Nation, 2005

**GENERAL LOCATIONS OF PREVIOUSLY IDENTIFIED
ARCHAEOLOGICAL SITES: JEWELL QUADRANGLE**

**FIGURE
D-3**

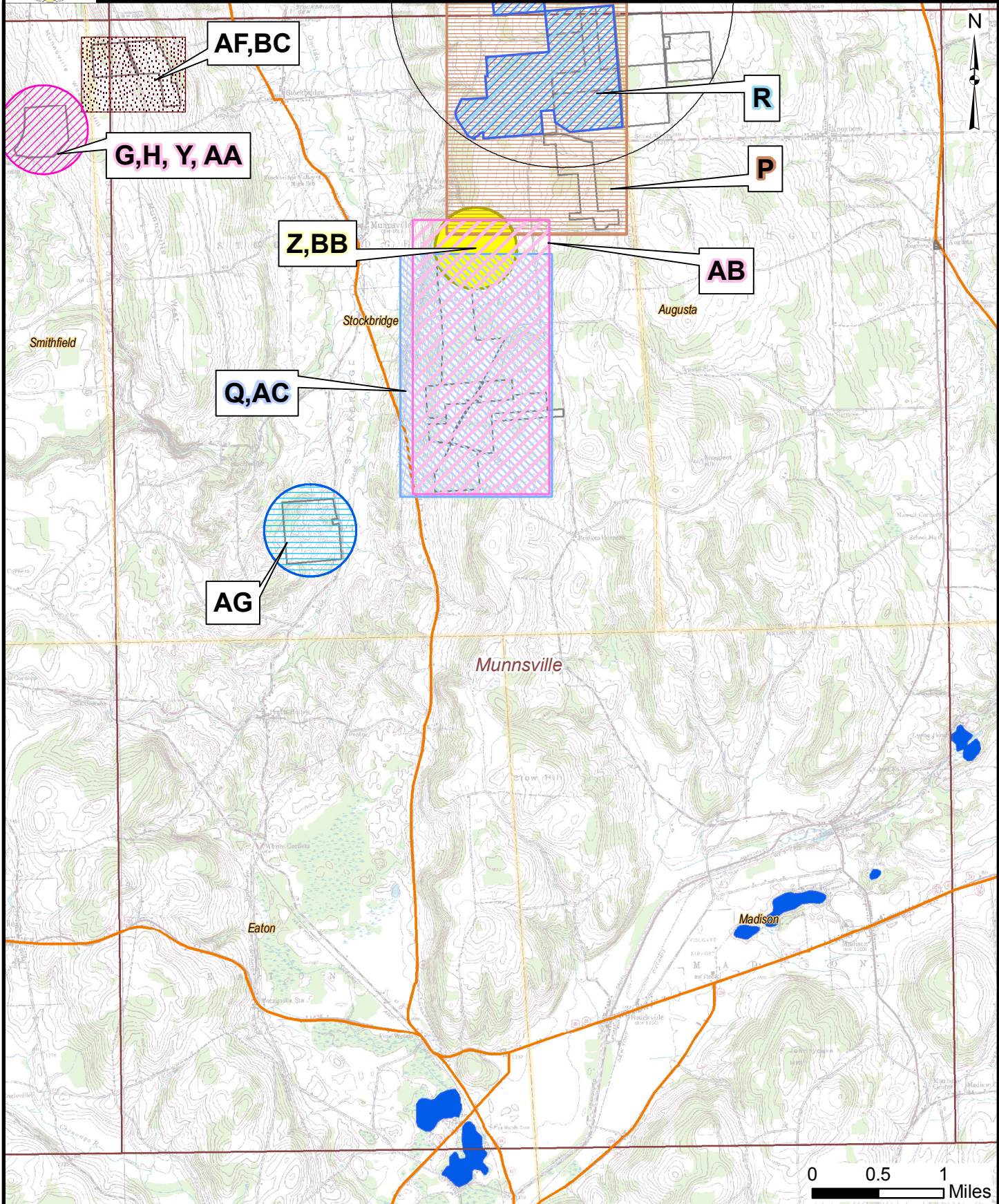


Source:
Nation Properties: Nation, 2005

**GENERAL LOCATIONS OF PREVIOUSLY IDENTIFIED
ARCHAEOLOGICAL SITES: MORRISVILLE QUADRANGLE**

**FIGURE
D-4**

Map Document: G:\Projects\647701\DEIS\XCS\Archaeological_Historical\Cultural\Archaeological\Appendix\Archaeological_appendix_Morrisville.mxd
10/18/2008 - 10:38:00 AM

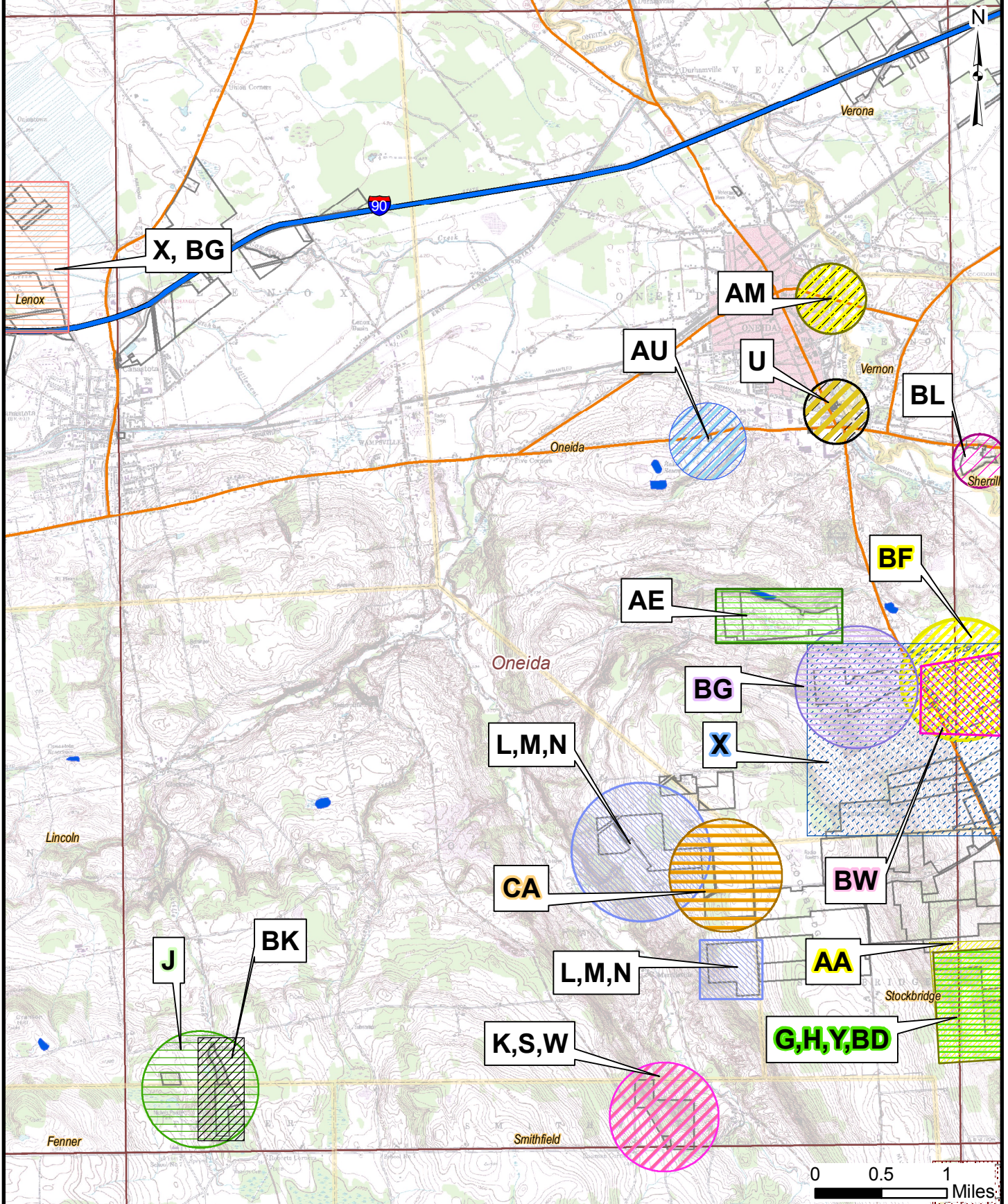


Source:
Nation Properties: Nation, 2005

**GENERAL LOCATIONS OF PREVIOUSLY IDENTIFIED
ARCHAEOLOGICAL SITES: MUNNSVILLE QUADRANGLE**

**FIGURE
D-5**

Map Document: G:\Projects\647701\DEIS\MX\Archeological\Historical\Cultural\Archeological\Archeological_Appendix\Archeological_appendix_Munnsville.mxd
10/16/2008 - 10:38:04 AM

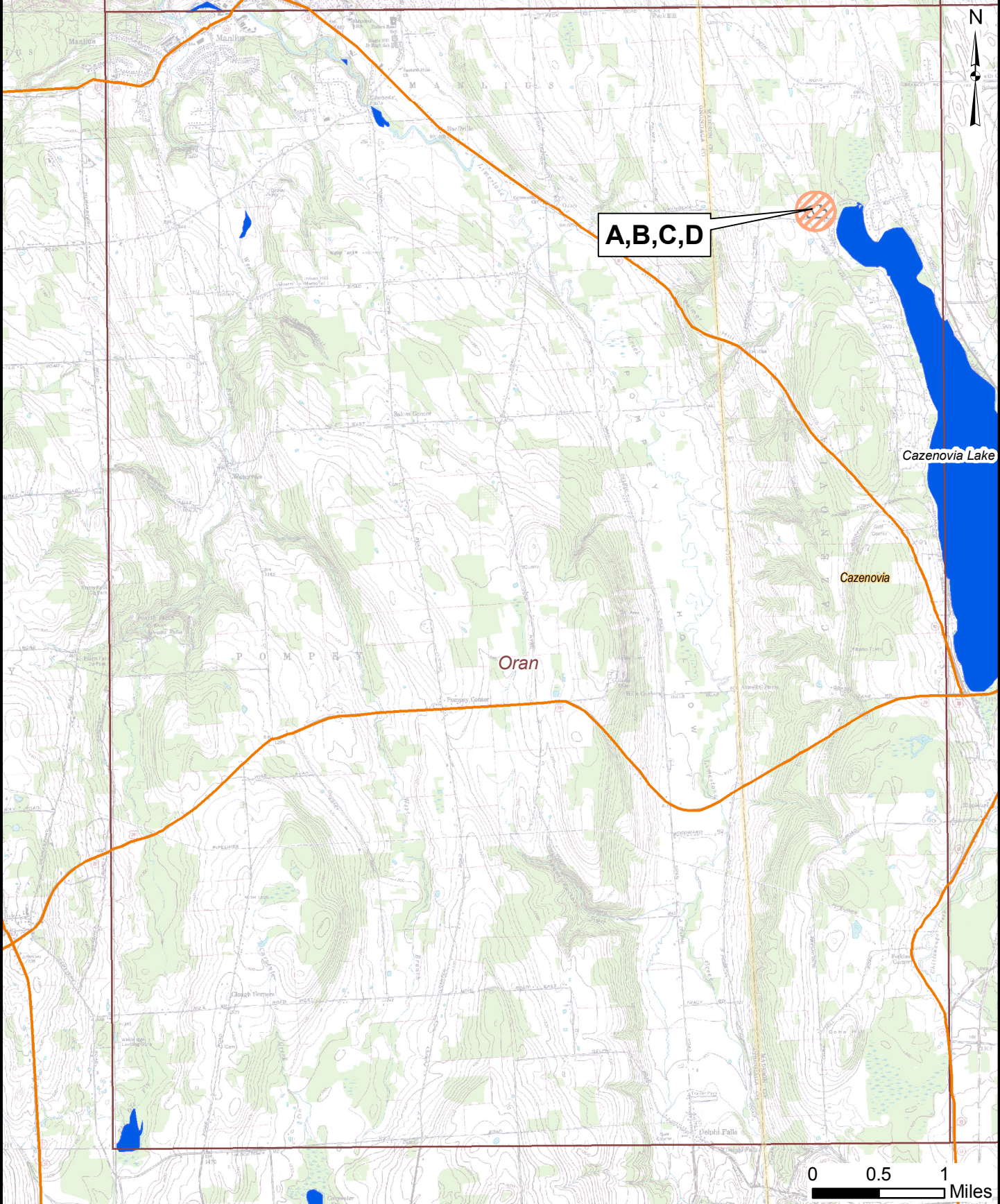


Source:
Nation Properties: Nation, 2005

**GENERAL LOCATIONS OF PREVIOUSLY IDENTIFIED
ARCHAEOLOGICAL SITES: ONEIDA QUADRANGLE**

**FIGURE
D-6**

Map Document: G:\Projects\647701\DEIS\MX\Archaeological_Historical\Cultural\Archaeological\Appendix\Archaeological_appendix_Oneida.mxd
10/16/2008 - 10:38:18 AM

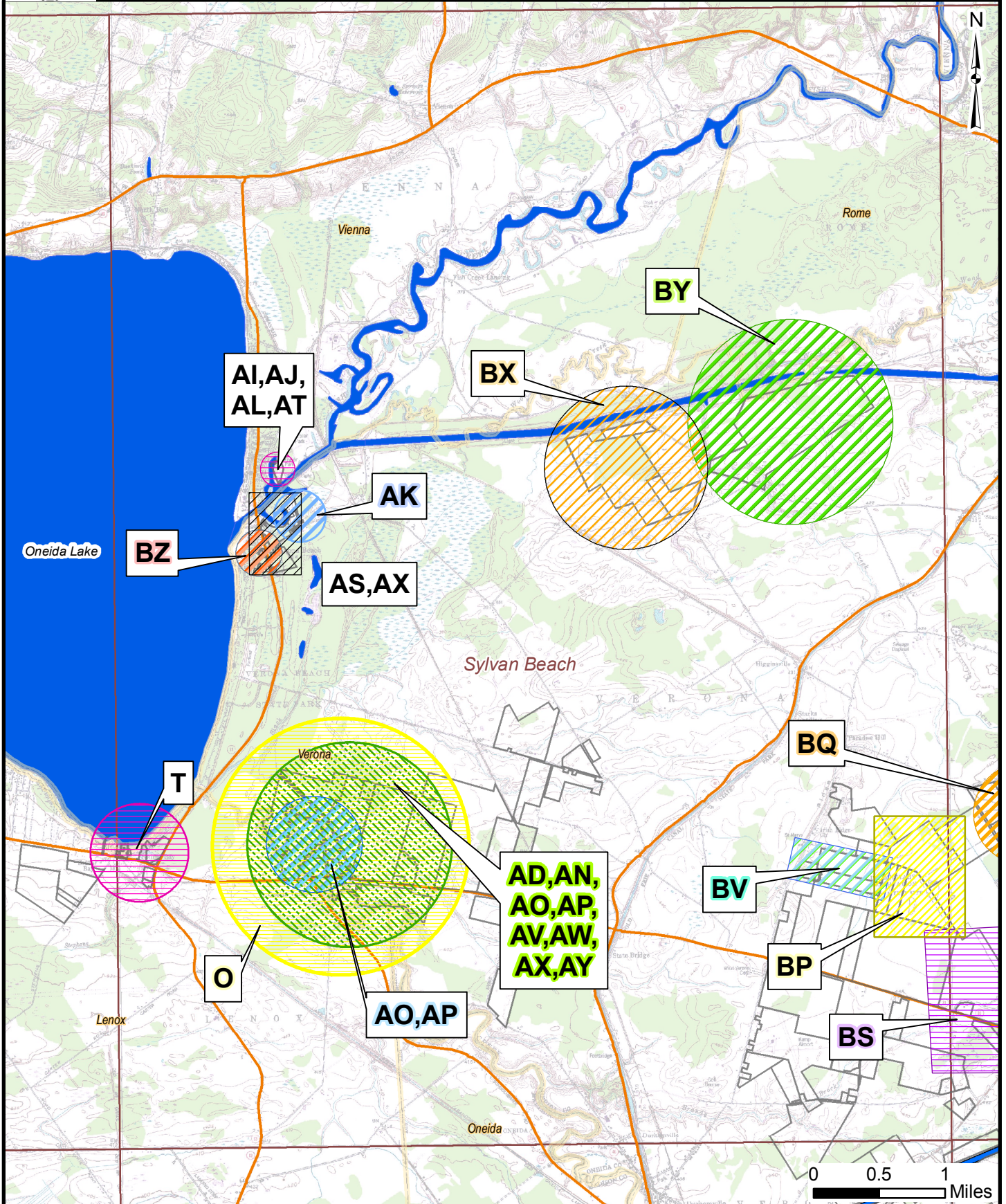


Source:
Nation Properties: Nation, 2005

**GENERAL LOCATIONS OF PREVIOUSLY IDENTIFIED
ARCHAEOLOGICAL SITES: ORAN QUADRANGLE**

**FIGURE
D-7**

Map Document: G:\Projects\647701\DEIS\XCS\Archaeological_Historical\Cultural\Archaeological\Appendix\Archaeological_appendix_Oran.mxd
10/16/2008 - 10:37:26 AM

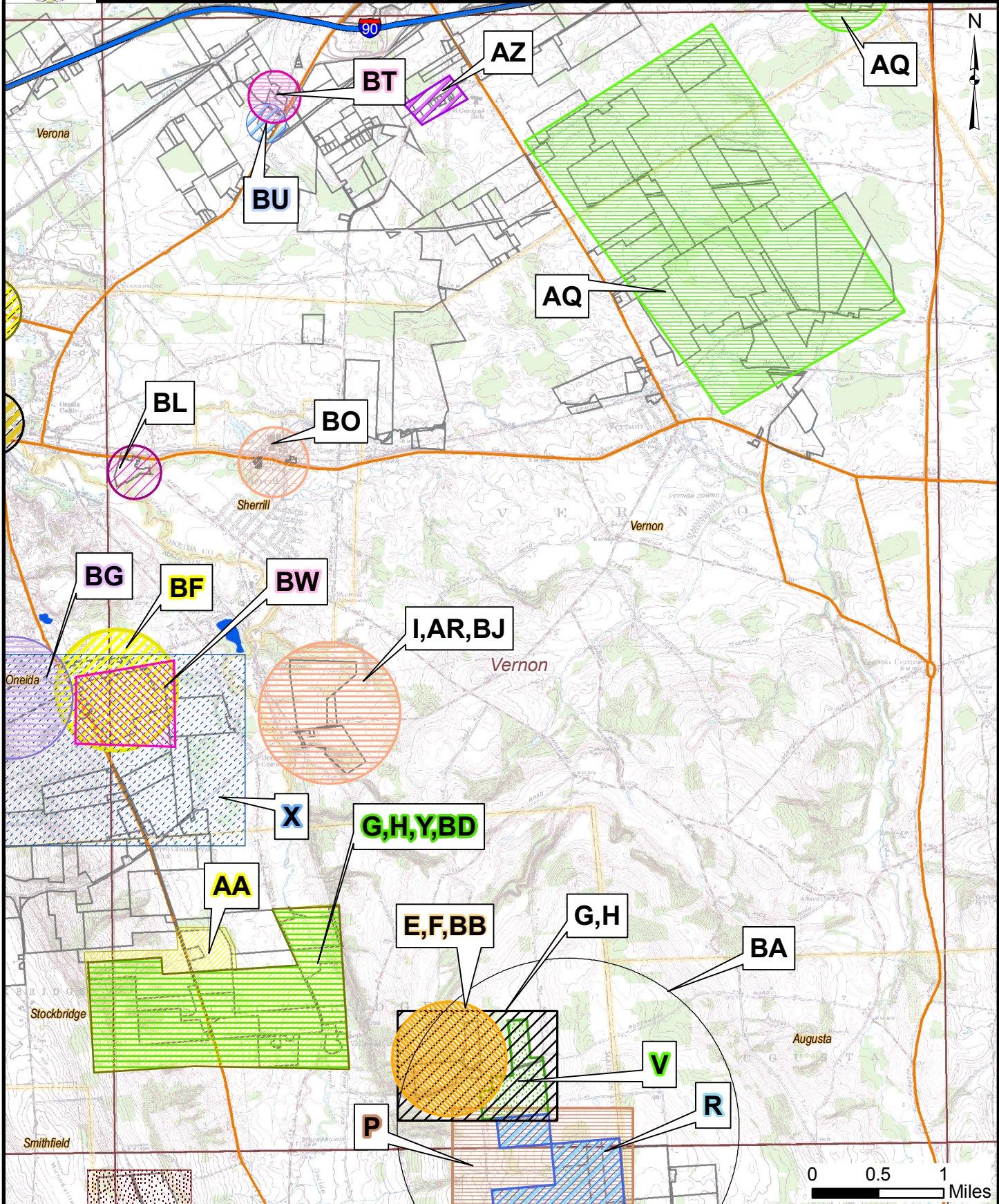


Source:
Nation Properties: Nation, 2005

**GENERAL LOCATIONS OF PREVIOUSLY IDENTIFIED
ARCHAEOLOGICAL SITES: SYLVAN BEACH QUADRANGLE**

**FIGURE
D-8**

Map Document: G:\Projects\647701\DEIS\X\Archaeological_Historical\Cultural\Archaeological_Appendix\Archaeological_appendix_SylvanBeach.mxd
10/16/2008 - 10:38:10 AM

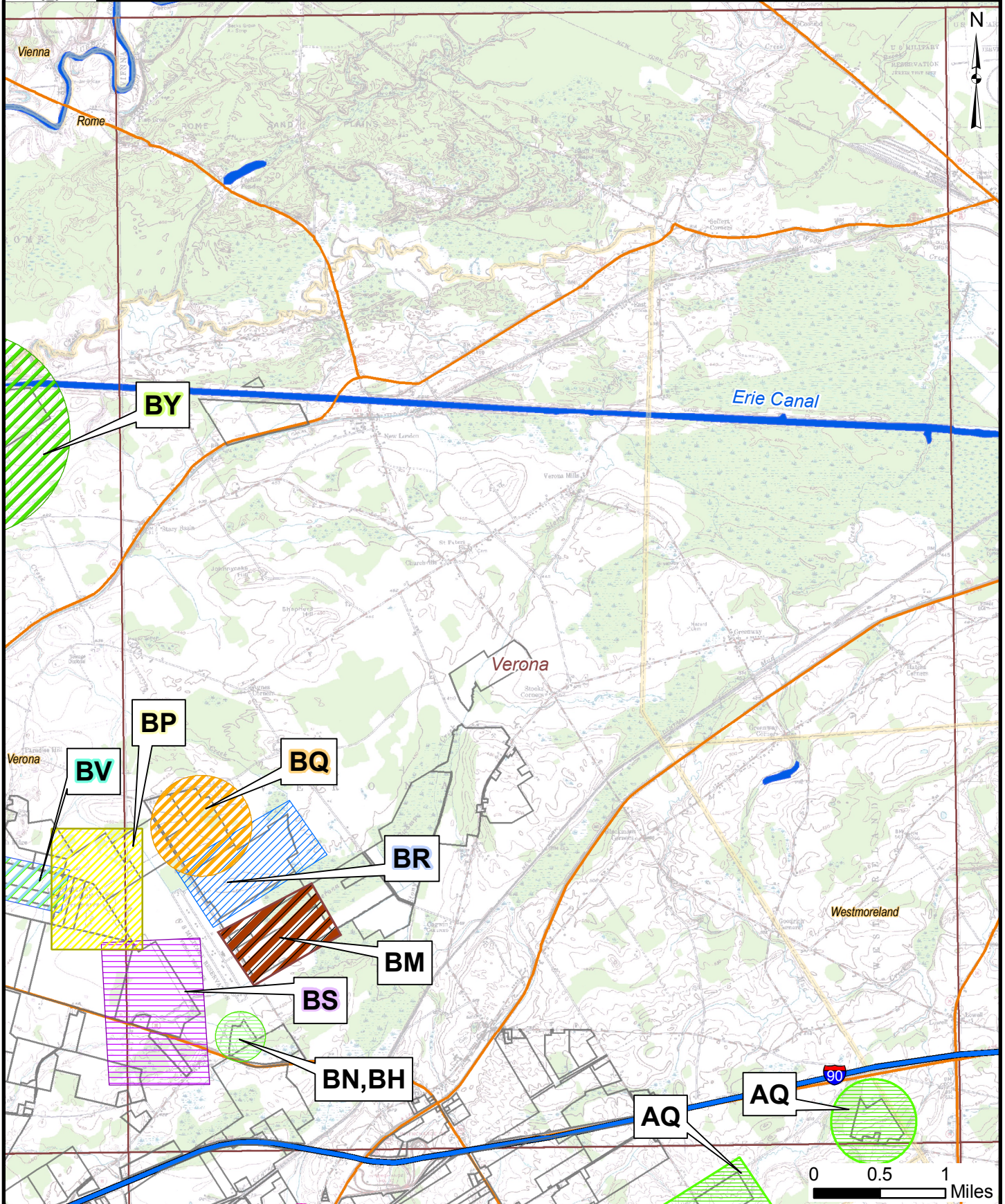


Source:
Nation Properties: Nation, 2005

**GENERAL LOCATIONS OF PREVIOUSLY IDENTIFIED
ARCHAEOLOGICAL SITES: VERNON QUADRANGLE**

**FIGURE
D-9**

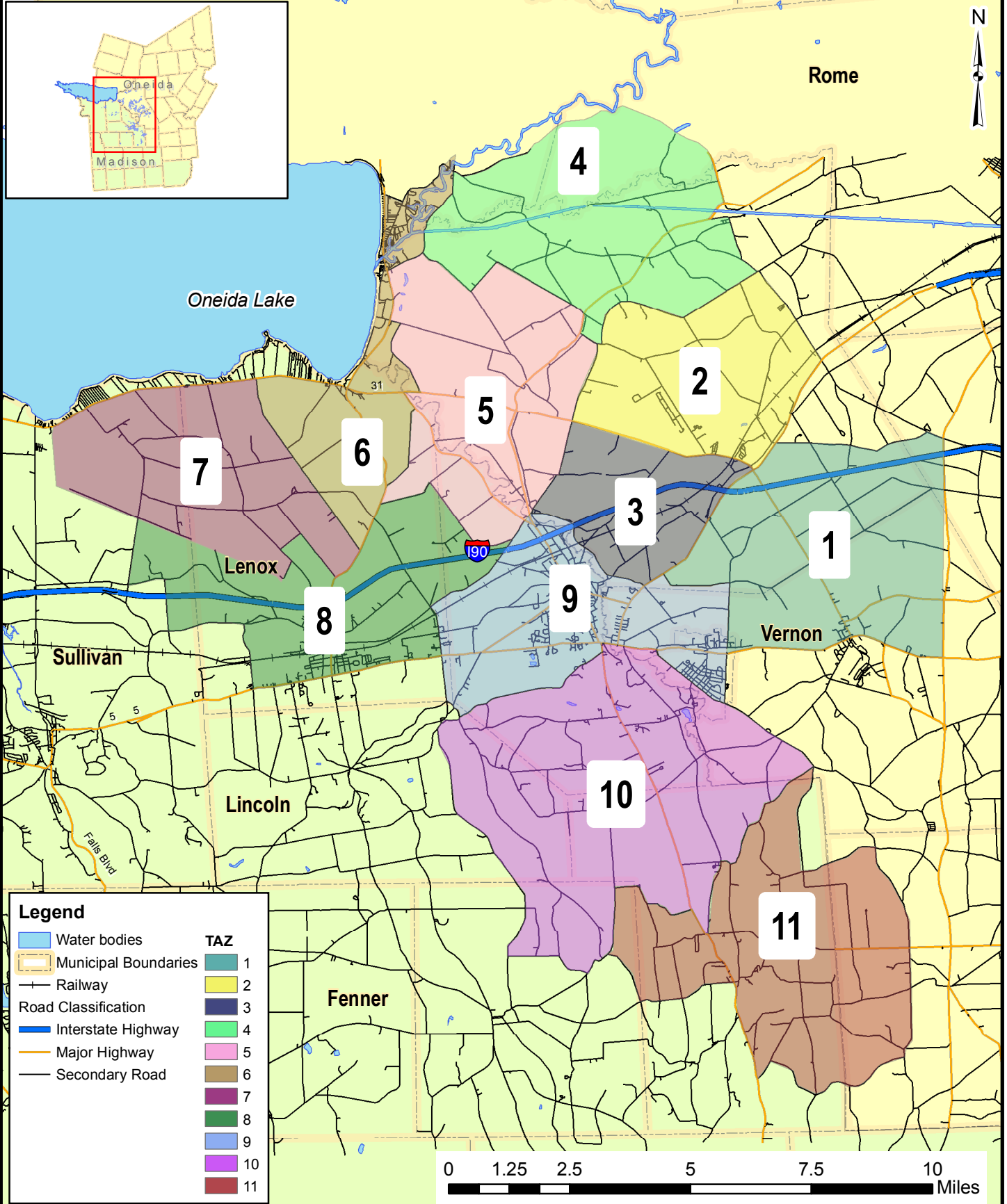
Map Document: G:\Projects\647701\DEIS\XCA\Archaeological_Historical_Cultural\Archaeological_Appendix\Archaeological_appendix_Vernon.mxd
10/16/2008 - 10:38:11 AM



Source:
Nation Properties: Nation, 2005

**GENERAL LOCATIONS OF PREVIOUSLY IDENTIFIED
ARCHAEOLOGICAL SITES: VERONA QUADRANGLE**

**FIGURE
D-10**



TRANSPORTATION ANALYSIS ZONES

**FIGURE
F-1**