




Scientific Inventory of Onshore Federal Lands' Oil and Gas Resources and the Extent and Nature of Restrictions or Impediments to Their Development

2006



Phase II Cumulative
Inventory:

Northern Alaska

Montana Thrust Belt

Powder River Basin

Wyoming Thrust Belt

Greater Green River Basin

Denver Basin

Uinta-Piceance Basin

Paradox/San Juan Basins

Appalachian Basin

Black Warrior Basin

Florida Peninsula



Scientific Inventory of Onshore Federal Lands' Oil and Gas Resources and the Extent and Nature of Restrictions or Impediments to Their Development

2006

**Phase II Cumulative
Inventory:**

Northern Alaska

Montana Thrust Belt

Powder River Basin

Wyoming Thrust Belt

Greater Green River Basin

Denver Basin

Uinta-Piceance Basin

Paradox/San Juan Basins

Appalachian Basin

Black Warrior Basin

Florida Peninsula

**Prepared by the
U.S. Departments of the Interior,
Agriculture, and Energy**



**In Compliance with the Energy Act of 2000, P.L. 106-469 §604
as Amended by the Energy Policy Act of 2005, P.L. 109-58 §364**

BLM/WO/GI-03/002+3100/REV06

2006

The mention of trade names or commercial products does not constitute endorsement or recommendation for use by the Federal Government.

www.blm.gov/epca

**DVD-ROMs are available from the
Bureau of Land Management**

Design and layout by the BLM National Science and Technology Center,
Publishing Services Staff.

Authors and Contributors

Larry A. Anna, DOI-U.S. Geological Survey
Megan A. Billingsley Advanced Resources
International, Inc.
Kenneth J. Bird, DOI-U.S. Geological
Survey
John Bown, DOI-Bureau of Land
Management
Ronald R. Charpentier, DOI-U.S. Geological
Survey
Timothy S. Collett, DOI-U.S. Geological
Survey
Steven M. Condon, DOI-U.S. Geological
Survey
Troy A. Cook, DOI-U.S. Geological Survey
*W. Dean Crandell, USDA-Forest Service
Robert A. Crovelli, DOI-U.S. Geological
Survey
Gordon L. Dolton, DOI-U.S. Geological
Survey
Melissa Dover, Premier Data Services, Inc.
Russell F. Dubiel, DOI-U.S. Geological
Survey
Thaddeus S. Dyman, DOI-U.S. Geological
Survey
Jeffrey Eppink, Advanced Resources
International, Inc.
Thomas M. Finn, DOI-U.S. Geological
Survey
Romeo M. Flores, DOI-U.S. Geological
Survey
James E. Fox, DOI-U.S. Geological Survey
Christopher D. French, DOI-U.S. Geological
Survey
Pat Gallagher, DOI-Bureau of Land
Management
Tim Gramms, Premier Data Services, Inc.
Steven G. Grape, DOE-Energy Information
Administration
Veronica Guandique, Advanced Resources
International, Inc.
Joseph R. Hatch, DOI-U.S. Geological
Survey
Mitchell E. Henry, DOI-U.S. Geological
Survey
Robert D. Hettinger, DOI-U.S. Geological
Survey
Debra Higley, DOI-U.S. Geological Survey
Sean Hlousek, Premier Data Services, Inc.
*H. William Hochheiser, DOE-Office of
Fossil Energy
David W. Houseknecht, DOI-U.S.
Geological Survey
Bob Johnson, Premier Data Services
Edward A. Johnson, DOI-U.S. Geological
Survey
Ronald C. Johnson, DOI-U.S. Geological
Survey
Brian Keightley, Advanced Resources
International, Inc.
Joyce Kibler, DOI-U.S. Geological Survey
Robert F. King, DOE-Energy Information
Administration
Mark A. Kirschbaum, DOI-U.S. Geological
Survey
Timothy R. Klett, DOI-U.S. Geological
Survey

Keith Lewis, Premier Data Services, Inc.
 Paul G. Lillis, DOI-U.S. Geological Survey
 Sam Limerick, Z, Inc.
 Gary R. Long, DOE-Energy Information
 Administration
 Armando Lopez, DOI-Bureau of Land
 Management
 Xin (Lucy) Luo, Z, Inc.
 Michael Marquis, Advanced Resources
 International, Inc.
 Robert C. Milici, DOI-U.S. Geological
 Survey
 *David F. Morehouse, DOE-Energy
 Information Administration
 Philip H. Nelson, DOI-U.S. Geological
 Survey
 Vito F. Nuccio, DOI-U.S. Geological Survey
 Mark J. Pawlewicz, DOI-U.S. Geological
 Survey
 Jack Perrin, Z, Inc.
 William J. Perry, DOI-U.S. Geological
 Survey
 Robin Petrusak, Advanced Resources
 International, Inc.
 *Brenda Pierce, DOI-U.S. Geological
 Survey
 Jennifer Pilkington, Premier Data Services,
 Inc.
 Richard M. Pollastro, DOI-U.S. Geological
 Survey
 Christopher J. Potter, DOI-U.S. Geological
 Survey

Karina P. Quattrin, Advanced Resources
 International, Inc.
 Cynthia A. Rice, DOI-U.S. Geological
 Survey
 Jennie L. Ridgley, DOI-U.S. Geological
 Survey
 Laura N.R. Roberts, DOI-U.S. Geological
 Survey
 Stephen B. Roberts, DOI-U.S. Geological
 Survey
 Robert T. Ryder, DOI-U.S. Geological
 Survey
 Christopher J. Schenk, DOI-U.S. Geological
 Survey
 James W. Schmoker, DOI-U.S. Geological
 Survey
 Allison Shaffer, DOI-Bureau of Land
 Management
 Dan Sheid, Premier Data Services, Inc.
 Christopher S. Swezey, DOI-U.S.
 Geological Survey
 Hank Szymanski, DOI-Bureau of Land
 Management
 **Richard L. Watson, DOI-Bureau of Land
 Management
 Floyd C. Wiesepape, DOE-Energy
 Information Administration
 Robert Woerner, DOI-Bureau of Land
 Management
 John H. Wood, DOE-Energy Information
 Administration

*Interagency Steering Committee Member

**Interagency Steering Committee Chairman

Table of Contents

Executive Summary	xxi
The Mandate from Congress	xxi
The President’s National Energy Policy Directives	xxiii
Methodology	xxiv
Results	xxv
Compliance with the Law	xxix
1.0 Introduction	1
1.1 Background	2
1.2 The EPCA as Amended by the EPAct 2005	3
1.3 The National Energy Policy, May 2001	5
1.4 The EPCA Phase I Inventory, 2003	5
1.5 The National Petroleum Council Report, 2003	6
1.6 Approach.	6
1.7 Roles of the Agencies	7
1.8 Intended Use	8
1.9 Products/Future Direction	9
2.0 Methodology.	11
2.1 Procedures for Collecting and Preparing Land Status and Oil and Gas Access Constraints	12
2.1.1 Federal Land Status	12
2.1.1.1 Sources of Land Status Data.	12
2.1.1.2 Land Status Data Preparation	13
2.1.1.3 Land Status Data—Related Caveats.	25
2.1.2 Federal Oil and Gas Lease Stipulations	25
2.1.2.1 Sources of Lease Stipulation Data.	26
2.1.2.2 Lease Stipulation Data Preparation	29
2.1.2.3 Lease Stipulation Data—Related Caveats.	29
2.1.3 Federal Drilling Permit Conditions of Approval	29
2.1.3.1 Sources of Conditions of Approval Data	31
2.1.3.2 Conditions of Approval Data Preparation	31
2.1.3.3 Conditions of Approval Data—Related Caveats	31

Table of Contents

2.2 Procedures for Collecting and Preparing Oil and Gas Resource, Reserves Growth, and Reserves Data	32
2.2.1 Undiscovered Oil and Gas Resources	32
2.2.1.1 Sources of Oil and Gas Resources Data	32
2.2.1.2 Oil and Gas Resource Data Preparation	41
2.2.1.3 Oil and Gas Resource Data—Related Caveats	41
2.2.2 Proved Ultimate Recovery Growth (“Reserves Growth”).	42
2.2.2.1 Sources of Remaining Proved Ultimate Recovery Data.	44
2.2.2.2 Remaining Proved Ultimate Recovery Data Preparation	45
2.2.2.3 Remaining Proved Ultimate Recovery—Data Caveats	46
2.2.3 Oil and Natural Gas Resource Maps.	48
2.2.4 Proved Reserves	72
2.2.4.1 Sources of Proved Oil and Gas Reserves Data	72
2.2.4.2 Proved Oil and Gas Reserves Data Preparation	72
2.2.4.3 Proved Reserves Data—Related Caveats	72
2.3 Data Integration and Spatial Analysis	74
2.3.1 Categorization of Oil and Gas Access Constraints	74
2.3.1.1 Data Integration and Spatial Analysis-Related Caveats	77
2.3.2 Analytical Modeling of Federal Lands and Resources	78
3.0 Results.	79
3.1 Study Area Features	79
3.1.1 Northern Alaska (NPR-A and ANWR 1002 Only)	79
3.1.2 Uinta-Piceance Basin	79
3.1.3 Paradox/San Juan Basins	89
3.1.4 Montana Thrust Belt	89
3.1.5 Powder River Basin	89
3.1.6 Wyoming Thrust Belt	108
3.1.7 Greater Green River Basin (South Western Wyoming)	108
3.1.8 Denver Basin.	121
3.1.9 Florida Peninsula	121
3.1.10 Black Warrior Basin	121
3.1.11 Appalachian Basin	140
3.2 Regional Features	153
4.0 Additional Federal Land Access Issues	157
4.1 Issues Directly Impacting Access	157
4.2 Issues Indirectly Impacting Access	181

Appendices

Appendix 1	Acronyms and Abbreviations	185
Appendix 2	Glossary of Terms	189
Appendix 3	Federal Land Status Preparation.	201
Appendix 4	Federal Oil and Gas Lease Stipulation Data Preparation	209
Appendix 5	Application for Permit to Drill - Conditions of Approval Data Preparation	217
Appendix 6	U.S. Geological Survey Methodology for the Assessment of Undiscovered Oil and Gas Resources	227
Appendix 7	Energy Information Administration Initial Estimates of Remaining Proved Ultimate Recovery Growth.	237
Appendix 8	Energy Information Administration Proved Reserves Estimation and Field Boundary Construction	267
Appendix 9	GIS Methodology	297
Appendix 10	Federal Land Use Planning Documents Used in the Phase II Inventory . .	309
Appendix 11	Federal Oil and Gas Surface Management Prescriptions - Available on the DVD-ROM and the Website	

Figures

Executive Summary

Figure ES-1.	Study Area Locationsxxii
Figure ES-2.	Simplified Results; Summary of All Phase II Study Areas— Total Federal Land and Oil and Natural Gas Resources by Accessibility	xxvii
Figure ES-3.	Results; Summary of All Phase II Study Areas— Total Federal Land and Oil and Natural Gas Resources by Access Category	xxviii
Figure ES-4.	Regional Charts	xxx

Section 1.0 – Introduction

Figure 1-1.	Study Area Locations	3
-------------	--------------------------------	---

Section 2.0 – Methodology

Figure 2-1.	Federal Land Status Map, Northern Alaska Study Area.	14
Figure 2-2.	Federal Land Status Map, Uinta-Piceance Basin Study Area	15
Figure 2-3.	Federal Land Status Map, Paradox/San Juan Basins Study Area	16
Figure 2-4.	Federal Land Status Map, Montana Thrust Belt Study Area	17
Figure 2-5.	Federal Land Status Map, Powder River Basin Study Area.	18
Figure 2-6.	Federal Land Status Map, Wyoming Thrust Belt Study Area	19
Figure 2-7.	Federal Land Status Map, Greater Green River Basin Study Area	20
Figure 2-8.	Federal Land Status Map, Denver Basin Study Area	21
Figure 2-9.	Federal Land Status Map, Florida Peninsula Study Area	22
Figure 2-10.	Federal Land Status Map, Black Warrior Basin Study Area.	23
Figure 2-11.	Federal Land Status Map, Appalachian Basin Study Area	24
Figure 2-12.	Conventional vs. Continuous Oil and Gas Accumulations	33
Figure 2-13.	Conceptual Block Diagram of Oil and Gas Plays	41
Figure 2-14.	Total Oil Map, Northern Alaska Study Area.	50
Figure 2-15.	Total Oil Map, Uinta-Piceance Basin Study Area	51
Figure 2-16.	Total Oil Map, Paradox/San Juan Basins Study Area	52
Figure 2-17.	Total Oil Map, Montana Thrust Belt Study Area	53
Figure 2-18.	Total Oil Map, Powder River Basin Study Area.	54
Figure 2-19.	Total Oil Map, Wyoming Thrust Belt Study Area	55
Figure 2-20.	Total Oil Map, Greater Green River Basin Study Area	56

Figure 2-21.	Total Oil Map, Denver Basin Study Area	57
Figure 2-22.	Total Oil Map, Florida Peninsula Study Area	58
Figure 2-23.	Total Oil Map, Black Warrior Basin Study Area	59
Figure 2-24.	Total Oil Map, Appalachian Basin Study Area	60
Figure 2-25.	Total Natural Gas Map, Northern Alaska Study Area	61
Figure 2-26.	Total Natural Gas Map, Uinta-Piceance Basin Study Area	62
Figure 2-27.	Total Natural Gas Map, Paradox/San Juan Basins Study Area	63
Figure 2-28.	Total Natural Gas Map, Montana Thrust Belt Study Area.	64
Figure 2-29.	Total Natural Gas Map, Powder River Basin Study Area	65
Figure 2-30.	Total Natural Gas Map, Wyoming Thrust Belt Study Area	66
Figure 2-31.	Total Natural Gas Map, Greater Green River Basin Study Area	67
Figure 2-32.	Total Natural Gas Map, Denver Basin Study Area	68
Figure 2-33.	Total Natural Gas Map, Florida Peninsula Study Area	69
Figure 2-34.	Total Natural Gas Map, Black Warrior Basin Study Area	70
Figure 2-35.	Total Natural Gas Map, Appalachian Basin Study Area.	71

Section 3.0 – Results

Figure 3-1	Simplified Chart of Results, Summary of All Phase II Study Areas—Federal Land and Oil and Natural Gas Resources by Accessibility	81
Figure 3-2.	Chart of Results, Summary of All Phase II Study Areas— Federal Land and Oil and Natural Gas Resources by Access Category	82
Figure 3-3.	Simplified Chart of Results, Northern Alaska Study Area— Federal Land and Oil and Natural Gas Resources by Accessibility	84
Figure 3-4.	Chart of Results, Northern Alaska Study Area— Federal Land and Oil and Natural Gas Resources by Access Category	85
Figure 3-5.	Federal Land Access Categorization Map, Northern Alaska Study Area	86
Figure 3-6.	Map of Total Federal Oil, Northern Alaska Study Area	87
Figure 3-7.	Map of Total Federal Natural Gas, Northern Alaska Study Area	88
Figure 3-8.	Simplified Chart of Results, Uinta-Piceance Basin Study Area— Federal Land and Oil and Natural Gas Resources by Accessibility	91

Figure 3-9.	Chart of Results, Uinta-Piceance Basin Study Area— Federal Land and Oil and Natural Gas Resources by Access Category	92
Figure 3-10.	Federal Land Access Categorization Map, Uinta-Piceance Basin Study Area	93
Figure 3-11.	Map of Total Federal Oil, Uinta-Piceance Basin Study Area	94
Figure 3-12.	Map of Total Federal Natural Gas, Uinta-Piceance Basin Study Area	95
Figure 3-13.	Simplified Chart of Results, Paradox/San Juan Basins Study Area— Federal Land and Oil and Natural Gas Resources by Accessibility	97
Figure 3-14.	Chart of Results, Paradox/San Juan Basins Study Area— Federal Land and Oil and Natural Gas Resources by Access Category	98
Figure 3-15.	Federal Land Access Categorization Map, Paradox/San Juan Basins Study Area	99
Figure 3-16.	Map of Total Federal Oil, Paradox/San Juan Basins Study Area . .	100
Figure 3-17.	Map of Total Federal Natural Gas, Paradox/San Juan Basins Study Area	101
Figure 3-18.	Simplified Chart of Results, Montana Thrust Belt Study Area— Federal Land and Oil and Natural Gas Resources by Accessibility	103
Figure 3-19.	Chart of Results, Montana Thrust Belt Study Area— Federal Land and Oil and Natural Gas Resources by Access Category	104
Figure 3-20.	Federal Land Access Categorization Map, Montana Thrust Belt Study Area	105
Figure 3-21.	Map of Total Federal Oil, Montana Thrust Belt Study Area. . . .	106
Figure 3-22.	Map of Total Federal Natural Gas, Montana Thrust Belt Study Area	107
Figure 3-23.	Simplified Chart of Results, Powder River Basin Study Area— Federal Land and Oil and Natural Gas Resources by Accessibility	110
Figure 3-24.	Chart of Results, Powder River Basin Study Area— Federal Land and Oil and Natural Gas Resources by Access Category	111

Figure 3-25.	Federal Land Access Categorization Map, Powder River Basin Study Area	112
Figure 3-26.	Map of Total Federal Oil, Powder River Basin Study Area	113
Figure 3-27.	Map of Total Federal Natural Gas, Powder River Basin Study Area	114
Figure 3-28.	Simplified Chart of Results, Wyoming Thrust Belt Study Area— Federal Land and Oil and Natural Gas Resources by Accessibility	116
Figure 3-29.	Chart of Results, Wyoming Thrust Belt Study Area— Federal Land and Oil and Natural Gas Resources by Access Category	117
Figure 3-30.	Federal Land Access Categorization Map, Wyoming Thrust Belt Study Area	118
Figure 3-31.	Map of Total Federal Oil, Wyoming Thrust Belt Study Area	119
Figure 3-32.	Map of Total Federal Natural Gas, Wyoming Thrust Belt Study Area	120
Figure 3-33.	Simplified Chart of Results, Greater Green River Basin Study Area—Federal Land and Oil and Natural Gas Resources by Accessibility	123
Figure 3-34.	Chart of Results, Greater Green River Basin Study Area— Federal Land and Oil and Natural Gas Resources by Access Category	124
Figure 3-35.	Federal Land Access Categorization Map, Greater Green River Basin Study Area	125
Figure 3-36.	Map of Total Federal Oil, Greater Green River Basin Study Area.	126
Figure 3-37.	Map of Total Federal Natural Gas, Greater Green River Basin Study Area	127
Figure 3-38.	Simplified Chart of Results, Denver Basin Study Area— Federal Land and Oil and Natural Gas Resources by Accessibility	129
Figure 3-39.	Chart of Results, Denver Basin Study Area— Federal Land and Oil and Natural Gas Resources by Access Category	130
Figure 3-40.	Federal Land Access Categorization Map, Denver Basin Study Area	131

Figure 3-41.	Map of Total Federal Oil, Denver Basin Study Area	132
Figure 3-42.	Map of Total Federal Natural Gas, Denver Basin Study Area.	133
Figure 3-43.	Simplified Chart of Results, Florida Peninsula Study Area— Federal Land and Oil and Natural Gas Resources by Accessibility	135
Figure 3-44.	Chart of Results, Florida Peninsula Study Area— Federal Land and Oil and Natural Gas Resources by Access Category	136
Figure 3-45.	Federal Land Access Categorization Map, Florida Peninsula Study Area	137
Figure 3-46.	Map of Total Federal Oil, Florida Peninsula Study Area	138
Figure 3-47.	Map of Total Federal Natural Gas, Florida Peninsula Study Area.	139
Figure 3-48.	Simplified Chart of Results, Black Warrior Basin Study Area— Federal Land and Oil and Natural Gas Resources by Accessibility	142
Figure 3-49.	Chart of Results, Black Warrior Basin Study Area— Federal Land and Oil and Natural Gas Resources by Access Category	143
Figure 3-50.	Federal Land Access Categorization Map, Black Warrior Basin Study Area.	144
Figure 3-51.	Map of Total Federal Oil, Black Warrior Basin Study Area.	145
Figure 3-52.	Map of Total Federal Natural Gas, Black Warrior Basin Study Area.	146
Figure 3-53.	Simplified Chart of Results, Appalachian Basin Study Area— Federal Land and Oil and Natural Gas Resources by Accessibility	148
Figure 3-54.	Chart of Results, Appalachian Basin Study Area— Federal Land and Oil and Natural Gas Resources by Access Category	149
Figure 3-55.	Federal Land Access Categorization Map, Appalachian Basin Study Area.	150
Figure 3-56.	Map of Total Federal Oil, Appalachian Basin Study Area.	151
Figure 3-57.	Map of Total Federal Natural Gas, Appalachian Basin Study Area	152
Figure 3-58.	Charts of the Top Five Study Areas by Federal Lands and Oil and Natural Gas Resources	154
Figure 3-59.	Regional Charts	155

Section 4.0 – Additional Federal Land Access Issues

Appendix 1 Acronyms and Abbreviations

Appendix 2 Glossary of Terms

Appendix 3 Federal Land Status Preparation

Figure A3-1. Schematic of BLM’s Primary Land Records Databases.	202
Figure A3-2. Master Polygon	204
Figure A3-3. Public Domain Lands	204
Figure A3-4. Query of U.S. Rights Data.	204
Figure A3-5. Federal Split Estate Oil and Gas Ownership.	205
Figure A3-6. Defining Ownership	205
Figure A3-7. Surface Management View	205
Figure A3-8. Subsurface Oil and Gas Ownership View	206

Appendix 4 Federal Oil and Gas Lease Stipulation Data Preparation

Figure A4-1. Stipulation Polygons and Study Area Boundary.	209
Figure A4-2. Example of Polygons after Clipping to Study Area Boundary . . .	210
Figure A4-3. Query in ArcGIS for All “Critical Big Game Habitat” Stipulations	210
Figure A4-4. Attribute Table Showing All “Critical Big Game Habitat” Polygons	210
Figure A4-5. New Polygons Representing Land with Leasing Stipulation for “Critical Big Game Habitat”.	211
Figure A4-6. Creation of Steep Slope Restriction Polygons.	212

Appendix 5 Application for Permit to Drill -

Conditions of Approval Data Preparation

Figure A5-1. Example of Extrapolating the Effects of Conditions of Approval on Accessibility.	221
--	-----

Appendix 6 U.S. Geological Survey Methodology for the Assessment
of Undiscovered Oil and Gas Resources

Figure A6-1. Conventional vs. Continuous Accumulations	228
--	-----

Appendix 7	Energy Information Administration Initial Estimates of Remaining Proved Ultimate Recovery Growth	
Figure A7-1.	Uinta-Piceance Basin Exponential Curve Fit of Equivalent Oil Cumulative Growth Factor246
Figure A7-2.	Uinta-Piceance Basin Exponential Curve Fit of Tight Formation Equivalent Oil Cumulative Growth Factor246
Figure A7-3.	Uinta-Piceance Basin Exponential Curve Fit of Liquids Cumulative Growth Factor.247
Figure A7-4.	Uinta-Piceance Basin Exponential Curve Fit of Gas Cumulative Growth Factor.247
Figure A7-5.	Uinta-Piceance Basin Exponential Curve Fit of Tight Formation Gas Cumulative Growth Factor248
Figure A7-6.	Paradox/San Juan Basins Exponential Curve Fit of Equivalent Oil Cumulative Growth Factor248
Figure A7-7.	Paradox/San Juan Basins Exponential Curve Fit of Tight Formation Equivalent Oil Cumulative Growth Factor249
Figure A7-8.	Paradox/San Juan Basins Exponential Curve Fit of Liquids Cumulative Growth Factor249
Figure A7-9.	Paradox/San Juan Basins Exponential Curve Fit of Tight Formation Liquids Cumulative Growth Factor250
Figure A7-10.	Paradox/San Juan Basins Exponential Curve Fit of Gas Cumulative Growth Factor250
Figure A7-11.	Paradox/San Juan Basins Exponential Curve Fit of Tight Formation Gas Cumulative251
Figure A7-12.	Powder River Basin Exponential Curve Fit of Equivalent Oil Cumulative Growth Factor251
Figure A7-13.	Powder River Basin Exponential Curve Fit of Liquids Cumulative Growth Factor252
Figure A7-14.	Powder River Basin Exponential Curve Fit of Gas Cumulative Growth Factor252
Figure A7-15.	Wyoming Thrust Belt Exponential Curve Fit of Oil Equivalent Cumulative Growth Factor253
Figure A7-16.	Wyoming Thrust Belt Exponential Curve Fit of Liquids Cumulative Growth Factor253
Figure A7-17.	Wyoming Thrust Belt Exponential Curve Fit of Gas Cumulative Growth Factor254

Figure A7-18. Greater Green River Basin Exponential Curve Fit of Equivalent Oil Cumulative Growth Factor	254
Figure A7-19. Greater Green River Basin Exponential Curve Fit of Liquids Cumulative Growth Factor	255
Figure A7-20. Greater Green River Basin Exponential Curve Fit of Gas Cumulative Growth Factor.	255
Figure A7-21. Denver Basin Exponential Curve Fit of Equivalent Oil Cumulative Growth Factor	256
Figure A7-22. Denver Basin Exponential Curve Fit of Liquids Cumulative Growth Factor	256
Figure A7-23. Denver Basin Exponential Curve Fit of Gas Cumulative Growth Factor	257
Figure A7-24. Black Warrior Basin Exponential Curve Fit of Oil Equivalent Cumulative Growth	257
Figure A7-25. Black Warrior Basin Exponential Curve Fit of Liquids Cumulative Growth Factor	258
Figure A7-26. Black Warrior Basin Exponential Curve Fit of Gas Cumulative Growth Factor	258
Figure A7-27. Uinta-Piceance Basin Liquids Fields Model Fit.	260
Figure A7-28. Uinta-Piceance Basin Gas Fields Model Fit.	260
Figure A7-29. Paradox/San Juan Basins Liquids Fields Model Fit.	261
Figure A7-30. Paradox/San Juan Basins Gas Fields Model Fit (Coalbed Natural Gas Not Included)	261
Figure A7-31. Powder River Basin Liquids Fields Model Fit	262
Figure A7-32. Powder River Basin Gas Fields Model Fit	262
Figure A7-33. Wyoming Thrust Belt Liquids Fields Model Fit.	263
Figure A7-34. Wyoming Thrust Belt Gas Fields Model Fit.	263
Figure A7-35. Greater Green River Basin Liquids Fields Model Fit	264
Figure A7-36. Greater Green River Basin Gas Fields Model Fit	264
Figure A7-37. Denver Basin Liquids Fields Model Fit	265
Figure A7-38. Denver Basin Gas Fields Model Fit	265
Figure A7-39. Black Warrior Basin Liquids Fields Model Fit	266
Figure A7-40. Black Warrior Basin Gas Fields Model Fit	266

Table of Contents

Appendix 8 Energy Information Administration Proved Reserves

Estimation and Field Boundary Construction

Figure A8-1. Phase II Process Flows.276

Figure A8-2. Buffering Process283

Figure A8-3. Field Buffers by Reservoir.284

Figure A8-4. Field Buffers by Field284

Figure A8-5. Buffered Field Outline Issues285

Figure A8-6. Tangent Trapezoid Smoothing Rules287

Figure A8-7. Field Boundary Before and After
Smoothing with Tangent Trapezoid Technique288

Figure A8-8. Black Warrior Basin Quality Check Map Showing
Smoothed Field Outlines and Percent Federal Land.290

Appendix 9 GIS Methodology

Figure A9-1. Creation of NLA/LUP Polygons.299

Figure A9-2. Extended Drilling Zone Conceptual Diagram302

Figure A9-3. Removal of the Extended Drilling Zone from NSO Areas304

Figure A9-4. Display of Overlapping Timing Limitations
(WTB Study Area).305

Figure A9-5. Display of Federal Land Access Categorization
(WTB Study Area).306

Figure A9-6. Display of Federal Resource Access Categorization
with Extended Drilling Zone Applied (WTB Study Area) . . .306

Figure A9-7. Display of Federal Land Access Categorization
with Extended Drilling Zone Removed and with
Sage Grouse Nesting Habitat Stipulation Excepted
(WTB Study Area).307

Appendix 10 Federal Land Use Planning Documents Used in the Phase II Inventory

Appendix 11 Federal Oil and Gas Surface Management Prescriptions -
Available on the DVD-ROM

Tables

Executive Summary

Table ES-1. Summary of All EPCA Inventory Areas—Total Federal Land and Oil and Natural Gas Resources by Access Category	xxvi
---	------

Section 1.0 – Introduction

Table 1-1. BLM and Forest Service Offices Participating in the Inventory.	7
---	---

Section 2.0 – Methodology

Table 2-1. Federal Land Acreage by Surface Management Agency	25
Table 2-2. Land Use Plans by Study Area.	26
Table 2-3. COAs by BLM Field Office	31
Table 2-4. Undiscovered Technically Recoverable Resources by Play.	34
Table 2-5. Remaining Proved Ultimate Recovery Growth (Reserves Growth) by Study Area (Federal and Non-Federal).	44
Table 2-6. Range of EIA Estimated Remaining Proved Ultimate Recovery Growth (Reserves Growth) for Selected Study Areas	48
Table 2-7. Proved Reserves Summary Statistics	74
Table 2-8. Summary of All Federal Oil and Natural Gas Resources by Study Area and Resource Type.	75
Table 2-9. Federal Land Access Categorization Hierarchy	76

Section 3.0 – Results

Table 3-1. Summary of All Phase II Study Areas—Federal Land and Oil and Natural Gas Resources by Access Category	80
Table 3-2. Northern Alaska Study Area—Federal Land and Oil and Natural Gas Resources by Access Category.	83
Table 3-3. Uinta-Piceance Basin Study Area—Federal Land and Oil and Natural Gas Resources by Access Category	90
Table 3-4. Paradox/San Juan Basins Study Area—Federal Land and Oil and Natural Gas Resources by Access Category	96
Table 3-5. Montana Thrust Belt Study Area—Federal Land and Oil and Natural Gas Resources by Access Category	102

Table 3-6.	Powder River Basin Study Area—Federal Land and Oil and Natural Gas Resources by Access Category	109
Table 3-7.	Wyoming Thrust Belt Study Area—Federal Land and Oil and Natural Gas Resources by Access Category	115
Table 3-8.	Greater Green River Basin Study Area—Federal Land and Oil and Natural Gas Resources by Access Category	122
Table 3-9.	Denver Basin Study Area—Federal Land and Oil and Natural Gas Resources by Access Category	128
Table 3-10.	Florida Peninsula Study Area—Federal Land and Oil and Natural Gas Resources by Access Category	134
Table 3-11.	Black Warrior Basin Study Area—Federal Land and Oil and Natural Gas Resources by Access Category	141
Table 3-12.	Appalachian Basin Study Area—Federal Land and Oil and Natural Gas Resources by Access Category	147
 Section 4.0 – Additional Federal Land Access Issues		
Table 4-1.	Access Issues, Northern Alaska Study Area	158
Table 4-2.	Access Issues, Paradox/San Juan Study Area (Utah)	158
Table 4-3.	Access Issues, Paradox/San Juan Study Area (New Mexico and Colorado)	160
Table 4-4.	Access Issues, Montana Thrust Belt Study Area	162
Table 4-5.	Access Issues, Powder River Basin Study Area	164
Table 4-6.	Access Issues, Wyoming Thrust Belt Study Area	166
Table 4-7.	Access Issues, Greater Green River Basin Study Area	170
Table 4-8.	Access Issues, Denver Basin Study Area	172
Table 4-9.	Access Issues, Florida Peninsula Study Area	174
Table 4-10.	Access Issues, Black Warrior Basin Study Area.	176
Table 4-11.	Access Issues, Appalachian Basin Study Area	178
 Appendix 1 Acronyms and Abbreviations		
 Appendix 2 Glossary of Terms		
 Appendix 3 Federal Land Status Preparation		
Table A3-1.	Polygon Attributes from the LR-2000 Datasets	203
Table A3-2.	Typical CarteView Input File	204

Appendix 4 Federal Oil and Gas Lease Stipulation Data Preparation

Table A4-1. Rendering Errors in Phase I Offices216
---	------

Appendix 5 Application for Permit to Drill -

Conditions of Approval Data Preparation

Table A5-1. Study Areas Sampled for COAs217
Table A5-2. BLM Field Offices for Which COAs Data Were Abstracted218
Table A5-3. Stratified Random Sampling Guidance218
Table A5-4a. Findings from Interviews with BLM Field Personnel – Applicant Funded Surveys.219
Table A5-4b. Findings from Interviews with BLM Field Personnel – Prohibitive Lease Stipulations/COAs220
Table A5-5. COA Statistics by Field Office.222

Appendix 6 U.S. Geological Survey Methodology for the Assessment
of Undiscovered Oil and Gas Resources

Appendix 7 Energy Information Administration Initial

Estimates of Remaining Proved Ultimate Recovery Growth

Table A7-1. Phase II Selected Models and Results242
Table A7-2. Comparison of Estimates of Reserves Growth-Natural Gas.243
Table A7-3. Exponential Method Ultimate Recovery Growth from 2003 to 2303245
Table A7-4. Hyperbolic Incremental Growth Factor Model Results259

Appendix 8 Energy Information Administration Proved Reserves

Estimation and Field Boundary Construction

Table A8-1. Phase II Study Areas and Their State and County Affiliations269
Table A8-2. Links to Websites Used in Phase II272
Table A8-3. State Agencies Contacted274
Table A8-4. Well Data Sources by State for Phase II.277
Table A8-5. Inter-Well Distance Ranges, Nominal Standard Well Spacings, and Buffer Radii.281
Table A8-6. Regression Equation Parameters for the Estimation of Non-Reported Reserves.291

Table A8-7.	Field Count, BOE Production & BOE Reserves for Four Reserve Types in Each Study Area.293
Table A8-8.	Summary of 2001 Federal Lands Proved Reserves by Study Area295
Table A8-9.	Summary of Updated 2001 Federal Lands Proved Reserves by Phase I Study Area296
 Appendix 9 GIS Methodology		
Table A9-1.	Jurisdictions Classified as NLA/LUP297
Table A9-2.	Federal Land Categorization.298
Table A9-3.	Stipulation Exception Factors by USDA-FS and BLM Office300
Table A9-4.	Exception Factors Example for Overlapping Stipulations (WTB Study Area).302
Table A9-5.	Extended Drilling Zones by Jurisdiction302
Table A9-6.	Sample Master Stipulations List for a Selected Area305
 Appendix 10 Federal Land Use Planning Documents Used in the Phase II Inventory		
 Appendix 11 Federal Oil and Gas Surface Management Prescriptions - Available on the DVD-ROM		

Executive Summary

The Mandate From Congress

In November 2000, Congress passed and President Clinton signed the Energy Act of 2000 (also referred to as the Energy Policy and Conservation Act [EPCA]). The Act directed the Secretary of the Interior, in consultation with the Secretaries of Agriculture and Energy, to conduct an inventory of oil and natural gas resources beneath onshore Federal lands:¹

The inventory shall identify:

- 1) the United States Geological Survey estimates of oil and gas resources underlying these lands;
- 2) the extent and nature of any restrictions or impediments to the development of the resources, including:
 - (A) impediments to the timely granting of leases;
 - (B) post-lease restrictions, impediments, or delays on development for conditions of approval, applications for permits to drill, or processing of environmental permits...

The EPCA marked the first time that Congress asked the Department of the Interior to conduct a study of restrictions.

On October 11, 2001, Congress provided its sense of priority for this study:
... in light of recent attacks on the United States that have underscored the potential

¹ Federal lands are defined as not including Indian lands.

for disruptions to America's energy supply, the managers believe this project should be considered a top priority for the Department.

In August 2005, Congress passed and President Bush signed the Energy Policy Act of 2005 (EPAAct 2005). Section 364 of this Act amends the inventory requirements of EPCA.²

This release presents a large majority of the inventory of public oil and gas resources requested by Congress. The EPCA Phase II inventory is a comprehensive review of Federal oil and gas resources and constraints on their development within 11 geologic provinces across the United States. It is cumulative in that it incorporates the Phase I areas (geologic provinces of the Interior West). Further, it represents an expansion of the inventory to include previously unstudied areas in the Interior West, Northern Alaska and several Eastern basins (Figure ES-1).

The EPCA requires that all onshore Federal lands be inventoried. Areas addressed in the Phase II inventory contain approximately 76 percent of the onshore natural gas and oil under Federal ownership. The inventory will be expanded in the future to include all Federal lands and resources.

For the Federal agencies that manage public land (principally the Department of the Interior's Bureau of Land Management [BLM] and the U.S. Department of Agriculture's Forest Service [USDA-FS])

² EPAAct 2005 amends the inventory requirements at 42 USC 6217. The updates have been reflected in the text of this document.

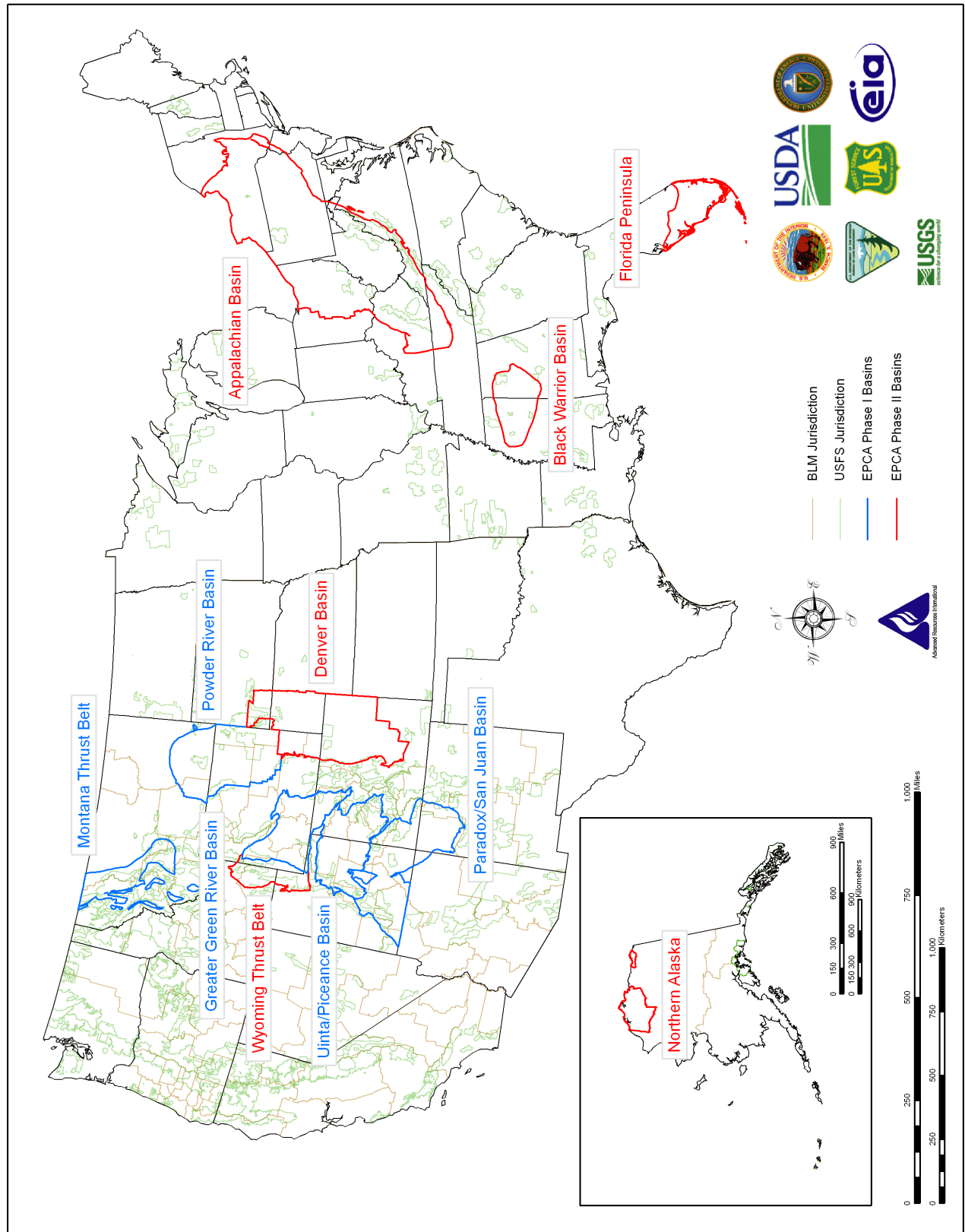


Figure ES-1. Study Area Locations

and the citizens they serve, this inventory will serve primarily as a planning tool. It provides public land managers with additional information to help them develop management plans for the lands under their jurisdiction. It enables them to identify areas of high oil or gas potential and to evaluate the effectiveness of mitigating stipulations and conditions of approval in balancing the responsible development of those resources with the protection of other valuable resources in the area. The inventory also allows resource managers to identify areas of low oil and gas potential, but high potential for other resources (e.g., wildlife habitat) or uses (e.g., recreation). In these situations, resource managers and oil and gas operators can consider applying land management strategies that promote increased protection of other valuable resources or uses that might ordinarily conflict with oil or gas development. This report is a critical step in evaluating whether the documented impediments and restrictions are appropriate, or are unnecessarily interfering with oil and gas development.

The President's National Energy Policy Directives

In May 2001, President Bush's National Energy Policy directed that the EPCA inventory be expedited and that constraints to Federal oil and gas leasing be reassessed and modified "where opportunities exist (consistent with the law, good environmental practice, and balanced use of other resources)." The National Energy Policy further directed that any reassessment of constraints be conducted "with full public consultation, especially with people in the region." This inventory provides information regarding the geographical relationship between oil and gas resources

and the constraints that govern their development. It is not a reassessment of any stipulations or conditions of approval on the development of oil and gas resources. The public's opportunity to participate in any change of restrictions on oil and gas activities will occur during the land use planning or legislative process. This inventory provides some basic information for any such process. Additional information may be available from monitoring and scientific studies incorporated into adaptive management processes.

The National Energy Policy provides an overview of the U.S. energy situation and alternatives available to increase energy efficiency and conservation, increase energy supplies, and protect the environment. At the direction of Congress, the present study focuses on the traditional energy resources of oil and natural gas beneath Federal lands.³

This inventory was prepared under the lead of the Bureau of Land Management. Senior professionals from the Department of the Interior's BLM and United States Geological Survey (USGS), the USDA-FS; the Department of Energy (DOE)-Office of Fossil Energy, and the Energy Information Administration (EIA) were the major contributors. The USGS provided the assessment of undiscovered technically recoverable oil and natural gas resources beneath Federal lands based on commercially available data. The EIA contributed the analysis of reserves growth

³ In recognition of the increased emphasis on the development of alternative energy resources in the National Energy Policy, the Department of Energy, in coordination with the Department of the Interior, has released a report, analogous to the present report, on the potential of Federal lands to support alternative energy technologies such as wind, solar, and biomass. See <http://www.nrel.gov/docs/fy03osti/33530.pdf>

and proved reserves for Federal lands. The DOE provided technical expertise to guide the design and analysis process for the inventory. Field offices of the BLM and the USDA-FS contributed their land use planning information regarding oil and natural gas availability and leasing stipulations for the lands under their respective jurisdictions.

Methodology

This inventory is based on information that has been previously developed through the scientific and planning processes of the contributing Federal agencies. This information has in large part been provided to the public for its review and use and is the best that is commercially and scientifically available. It has been compiled and analyzed by experts from the contributing agencies. The analytical methods and protocols used in the supporting studies have been subjected to rigorous review. The present study necessarily incorporates the assumptions, conditions, and limitations of the supporting scientific information as discussed in this report. This inventory is significant because it builds upon the process established in the EPCA Phase I inventory. It examines oil and gas (undiscovered technically recoverable resources and reserves growth) in context with information about constraints on their development.

The Phase II inventory examines six geologic provinces in addition to the five areas examined within the Interior West in the Phase I inventory. These six provinces are Northern Alaska (the National Petroleum Reserve in Alaska [NPR-A] and the Arctic National Wildlife Refuge [ANWR] Section 1002 only); the Wyoming Thrust Belt in Wyoming, Utah, and Idaho; the Denver

Basin in Colorado, Wyoming, Nebraska, and South Dakota; the Florida Peninsula; the Black Warrior Basin in Mississippi and Alabama; and the Appalachian Basin in Tennessee, Kentucky, West Virginia, Virginia, Maryland, Ohio, Pennsylvania, New Jersey, and New York. These areas were selected for Phase II of the inventory because, as a group, they include Alaska, a state containing important oil and gas resources, and contain a large portion of the inventoried onshore Federal oil and gas resources in the lower-48 states relative to the EPCA Phase I study areas. In addition, especially in the West, the Federal lands within these areas are becoming increasingly important for recreation, livestock grazing, open space, wildlife habitat, cultural resources, and mining, as well as oil and gas and other energy production.

The Phase II inventory encompasses 295 million acres, of which about 99 million acres are under Federal management. This acreage includes split estate lands where private surface lands are underlain by Federal mineral rights.

This analysis of constraints to development centers on two factors that affect access to oil and gas resources on Federal lands. These factors are (1) whether the lands are “open” or “closed” to leasing, and (2) the degree of access afforded by lease stipulations and other conditions on “open” lands (some leasable lands may in effect be “closed” if no drilling can occur). All oil and gas leases are subject to a baseline level of constraint governed by statutory and regulatory requirements. These stipulations serve many purposes, ranging from the protection of environmental, social, historical, or cultural resources or values to the payment of rentals and royalties.

The Phase II inventory finds that approximately 2,130 individual lease stipulations are being applied by the land managing agencies in the areas analyzed. To focus the analysis of constraints on oil and gas development, the inventory evaluates the onshore Federal lands: (1) where leasing is permitted under standard stipulations; (2) where leasing is permitted with varying limitations on access, principally seasonal occupancy restrictions; and (3) where oil and gas leasing is precluded or prohibited. The inventory also considers exceptions to stipulations that are granted after a review of on-the-ground conditions and the use of modern technologies such as directional drilling. The impact of conditions of approval (COAs) attached to Federal drilling permits is also analyzed, which gives a more complete assessment of access constraints. A total of 175 unique COAs were identified and their effects on development evaluated. The nine categories of constraints analyzed in this report include the complete range of access restrictions associated with oil and gas leasing.

Results

The results of this cumulative Phase II inventory are unique for each of the eleven areas examined. The aggregate results for all of the areas (Table ES-1, Figure ES-2, and Figure ES-3) are summarized below.

- Total Federal lands, including split estate, total 99.2 million acres.
- Undeveloped oil resources under these Federal lands total 21.2 billion barrels, comprising 20.6 billion barrels of undiscovered technically recoverable resources and 593 million barrels of reserves growth.
- Undeveloped gas resources under these Federal lands total 186.9 trillion cubic feet, comprising 181.9 trillion cubic feet of undiscovered technically recoverable resources and 4.98 trillion cubic feet of reserves growth.
- Total proved reserves under these Federal lands total 444 million barrels of oil and 26.3 trillion cubic feet of natural gas.
- Approximately 24 percent of the Federal land in these areas (23.8 million acres) is accessible under standard lease terms. Based on resource estimates, these lands contain 3 percent of the oil (743 million barrels) and 13 percent of the gas (25.2 trillion cubic feet).
- Approximately 30 percent (30.0 million acres) of the Federal land is accessible with restrictions on oil and gas operations beyond standard stipulations. Based on resource estimates, these lands contain 46 percent of the oil (9.7 billion barrels) and 60 percent of the gas (111.5 trillion cubic feet).
- Approximately 46 percent (45.5 million acres) of the Federal land is inaccessible. Based on resource estimates, these lands contain about 51 percent of the oil (10.8 billion barrels) and 27 percent of the natural gas (50.1 trillion cubic feet).

Table ES-1. Summary of All EPCA Inventory Areas—Total Federal Land and Oil and Natural Gas Resources by Access Category

Access Category			Area		Resources ^a			
					Total Oil ^b		Total Gas ^c	
			(acres x 1000)	Percent of Federal	(MMbbls) ^d	Percent of Federal	(BCF) ^e	Percent of Federal
More Constrained ↑ Less Constrained	1.	No Leasing (Statutory/Executive Order) (NLS)	12,601	12.7%	7,510	35.4%	14,867	8.0%
	2.	No Leasing (Administrative) (NLA)	4,161	4.2%	1,405	6.6%	6,891	3.7%
	3.	No Leasing (Administrative) Pending Land Use Planning or NEPA Compliance (NLA/LUP)	19,680	19.8%	1,727	8.1%	25,444	13.6%
	4.	Leasing, No Surface Occupancy (NSO) (Net NSO for O&G Resources)	9,025	9.1%	135	0.6%	2,923	1.6%
	5.	Leasing, Cumulative Timing Limitations (TLs) of >9 Months	88	0.1%	3	0.0%	14	0.0%
	6.	Leasing, Cumulative Timing Limitations (TLs) of >6 to ≤9 Months	12,252	12.4%	7,059	33.3%	37,893	20.3%
	7.	Leasing, Cumulative Timing Limitations (TLs) of >3 to ≤6 Months	9,271	9.3%	1,184	5.6%	31,188	16.7%
	8.	Leasing, Controlled Surface Use (CSU) ^f	8,374	8.4%	1,451	6.8%	42,428	22.7%
	9.	Leasing, Standard Lease Terms (SLTs)	23,751	23.9%	743	3.5%	25,210	13.5%
Total, Federal Lands including Split Estate			99,203	100%	21,216	100%	186,857	100%
Total Non-Federal			196,204		4,802		156,603	
Total Inventory Area			295,406		26,018		343,460	
Summary								
Inaccessible (Categories 1-4)			45,467	46%	10,776	51%	50,125	27%
Accessible with Restrictions (Categories 5-8)			29,985	30%	9,697	46%	111,522	60%
Accessible under Standard Lease Terms (Category 9)			23,751	24%	743	3%	25,210	13%
Total, Federal Lands Including Split Estate			99,203	100%	21,216	100%	186,857	100%

^a Undiscovered technically recoverable resources and reserves growth Small rounding errors may be present.

^b Including oil, natural gas liquids (NGLs) and liquids associated with natural gas reservoirs

^c Including associated dissolved and nonassociated natural gas

^d Million barrels

^e Billion cubic feet

^f Includes Cumulative Timing Limitations of ≤3 months

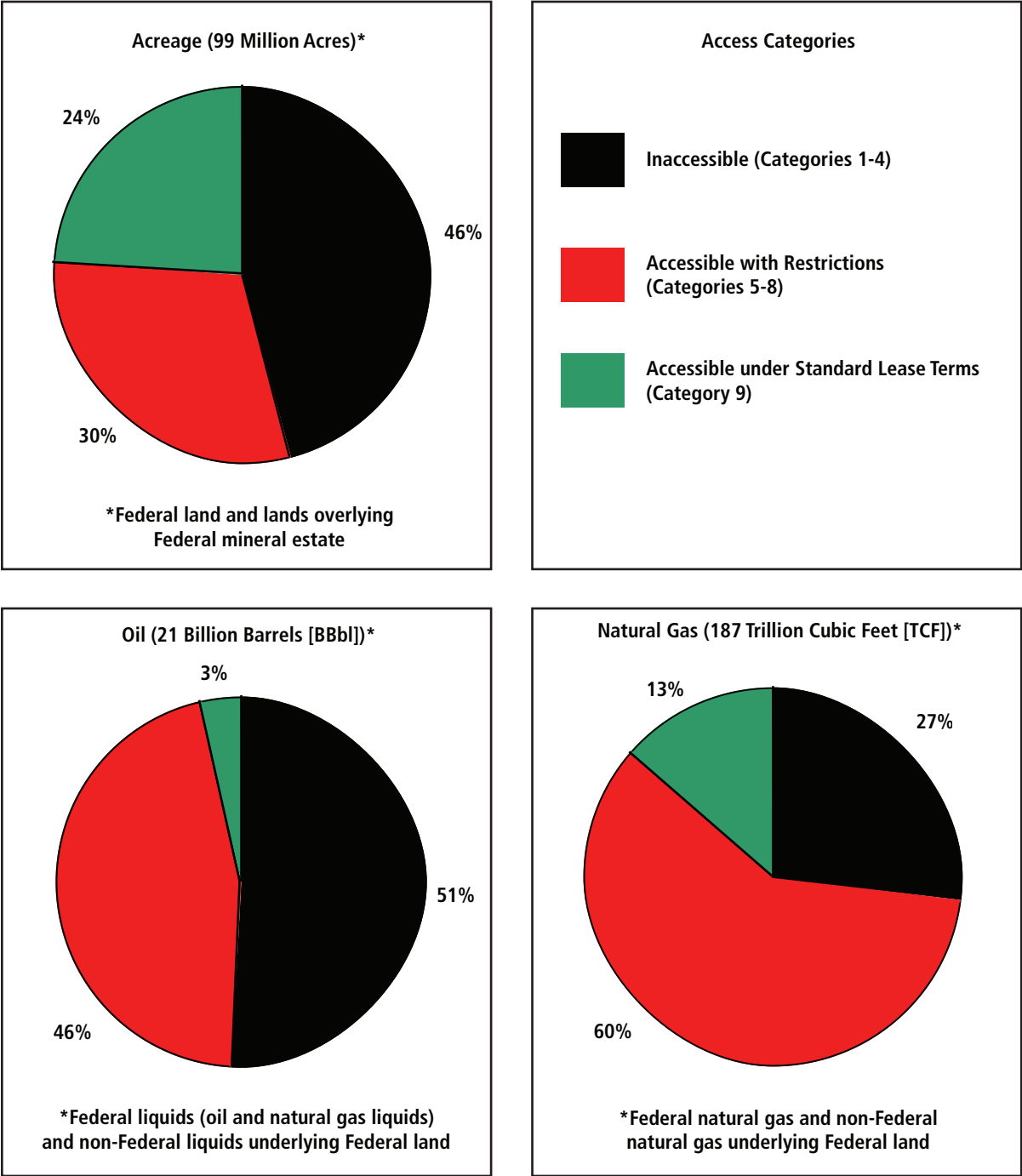


Figure ES-2. Simplified Results; Summary of All Phase II Study Areas—Total Federal Land and Oil and Natural Gas Resources by Accessibility

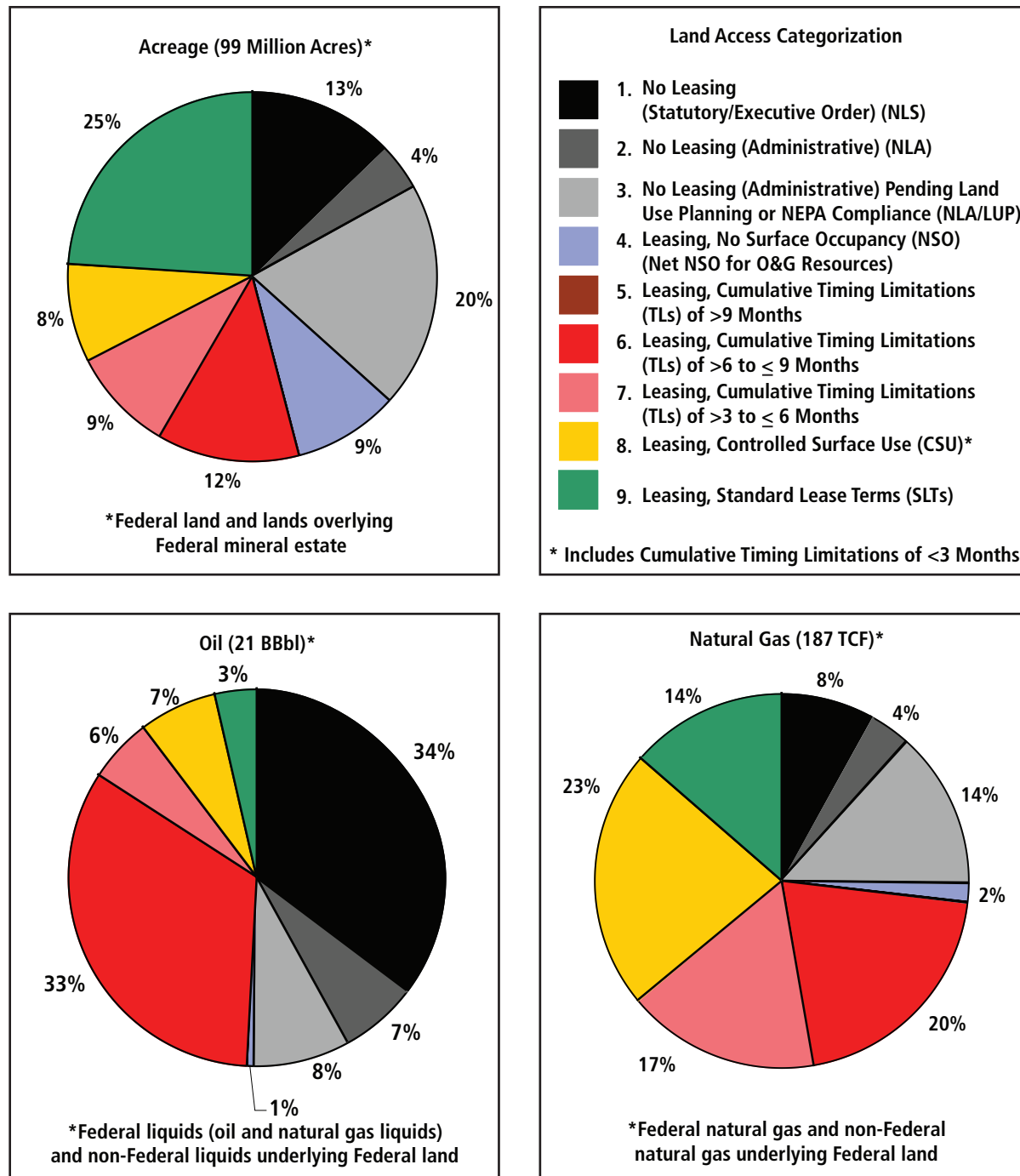


Figure ES-3. Results; Summary of All Phase II Study Areas—Total Federal Land and Oil and Natural Gas Resources by Access Category

Overall the study shows that oil and gas resources are concentrated in Northern Alaska and the Interior West. Figure ES-4 summarizes the accessibility of these resources (on a trillion cubic feet-equivalent basis).

Compliance With The Law

All oil and gas leases on Federal land, including those issued with only the standard lease terms, are subject to full compliance with all environmental laws and regulations. These laws include, but are not limited to, the National Environmental Policy Act, Clean Water Act, Clean Air Act, Endangered Species Act, and National Historic Preservation Act. While compliance with these laws may delay, modify, or prohibit oil and gas activities, these laws represent the values and bounds Congress believes appropriate to place on

Federal land managers for their stewardship of Federal lands. The present study was conducted at the request of Congress to provide information for forthcoming deliberations on the role of Federal lands in the U.S. energy supply.

It is important to emphasize that this inventory was prepared at the direction of Congress. It is not a decision-making document. The inventory identifies areas of varying oil and gas potential and the nature of constraints to the development of those resources in eleven areas across the U.S. Any reassessment of restrictions on oil and gas activities will occur as part of the public land use planning or legislative processes, both of which are fully open to public participation and debate about the appropriate balance between resource protection and resource development.

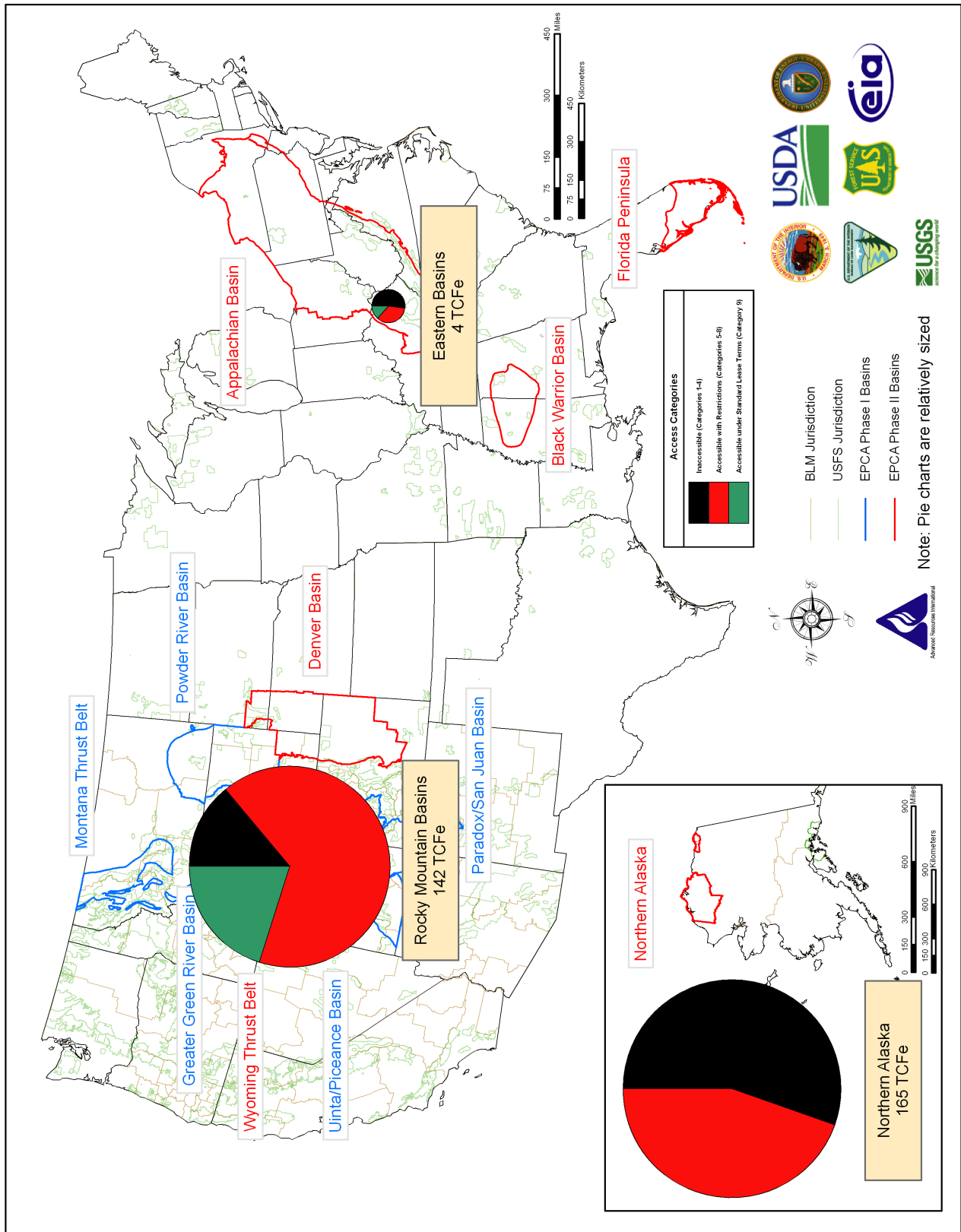


Figure ES-4. Regional Charts