

Cougar Canyon

Findings

INVENTORY UNIT ACRES		
Federal	State	Total
With Wilderness Characteristics		
200	0	200 (100%)
Without Wilderness Characteristics		
0	0	0 (0%)
Inventory Unit Total		
200	0	200
Contiguous Area-Wilderness Characteristics		
Cougar Canyon WSA (UT-040-123)	10,568	
(NV-050-166)	5,400	

The Cougar Canyon inventory unit is located along the southwestern boundary of the Cougar Canyon Wilderness Study Area (WSA). All 200 acres retain their wilderness characteristics. The inventory unit has the same outstanding opportunities for solitude and primitive and unconfined recreation that are present within the contiguous WSA. Three short vehicle ways and some mineral prospects exist, but these features are all substantially unnoticeable.

Unit Description

The Cougar Canyon inventory unit is located about 40 miles west of St. George near the Utah/Nevada state line. The unit is contiguous to a portion of the Cougar Canyon WSA, and is above the northern edge of Beaver Dam Wash. Vegetation is primarily piñon and juniper woodland, interspersed with sagebrush.

Wilderness Characteristics

Naturalness

The unit appears natural. Three vehicle ways, totaling 0.9 mile, and two small mining disturbances have been documented, but all are considered substantially unnoticeable. The vehicle ways and mining disturbances are overgrown with plant cover, receive little to no use, and continue to be reclaimed by weathering and plant growth. Eventually, they may all but disappear.

Outstanding Opportunities

Solitude

The Cougar Canyon inventory unit possesses the same outstanding opportunities for solitude as those identified within the contiguous Cougar Canyon WSA. The WSA's hilly terrain and dense pine woodlands, landscape features that screen and isolate users, extend into this unit.

Primitive and Unconfined Recreation

The Cougar Canyon inventory unit possesses the same opportunities for primitive and unconfined recreation as those found within the contiguous Cougar Canyon WSA, with hiking being the best opportunity.

Supplemental Values

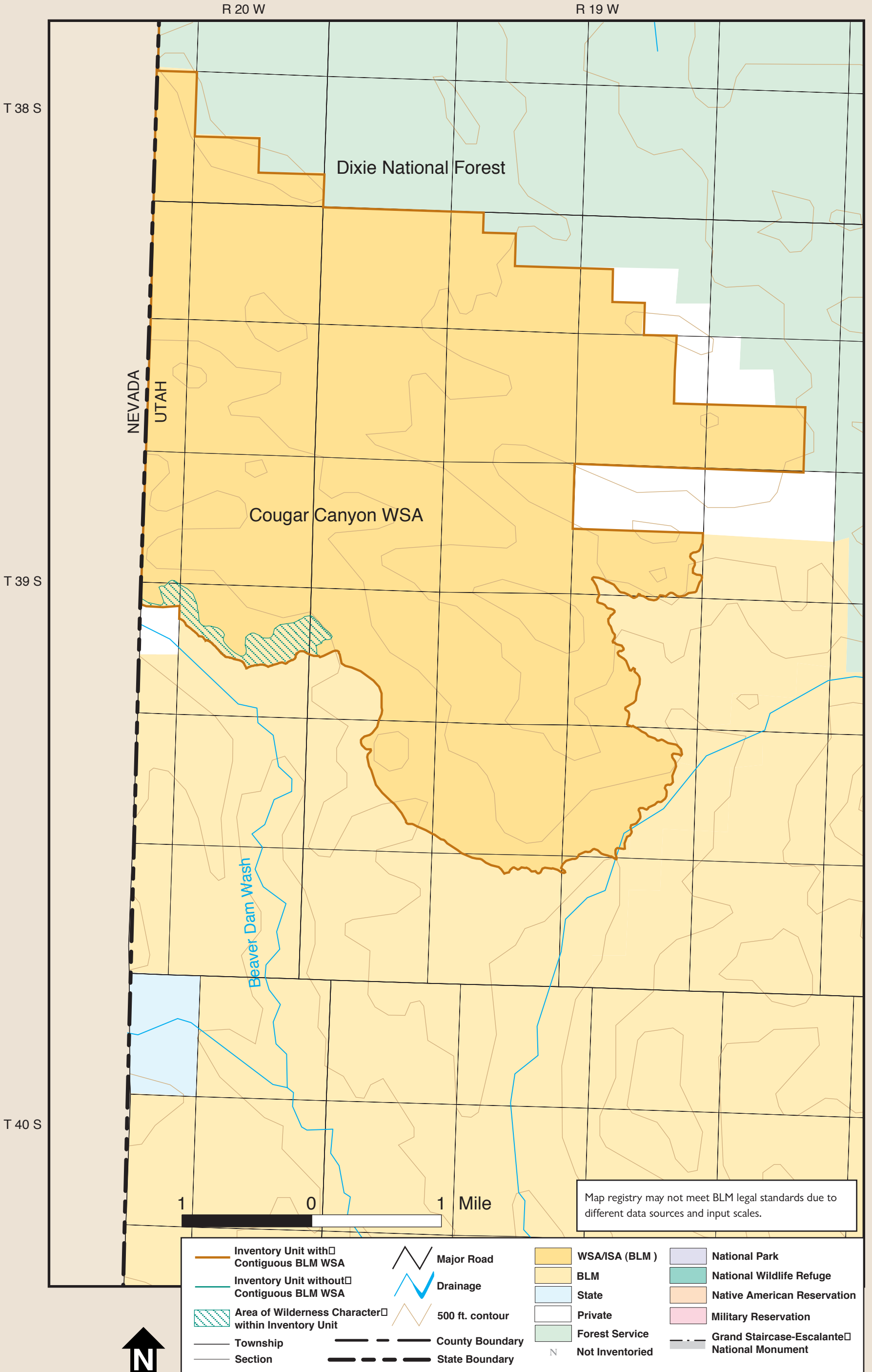
No supplemental values have been identified.

COUGAR CANYON—This mineral exploration site has been naturally reclaimed by plant growth and weathering.



BLM photo

Cougar Canyon



NEVADA
UTAH

R 20 W

R 19 W

T 38 S

Dixie National Forest

Cougar Canyon WSA

T 39 S

Beaver Dam Wash

T 40 S

1 0 1 Mile

Map registry may not meet BLM legal standards due to different data sources and input scales.

- | | | | |
|--|-----------------|-----------------|---|
| Inventory Unit with Contiguous BLM WSA | Major Road | WSA/ISA (BLM) | National Park |
| Inventory Unit without Contiguous BLM WSA | Drainage | BLM | National Wildlife Refuge |
| Area of Wilderness Character within Inventory Unit | 500 ft. contour | State | Native American Reservation |
| Township | County Boundary | Private | Military Reservation |
| Section | State Boundary | Forest Service | Grand Staircase-Escalante National Monument |
| | | Not Inventoried | |

