

# Cave Point

## Findings

INVENTORY UNIT ACRES		
Federal	State	Total
<b>With Wilderness Characteristics</b>		
5,900	0	5,900 (100%)
<b>Without Wilderness Characteristics</b>		
0	0	0 (0%)
<b>Inventory Unit Total</b>		
5,900	0	5,900
<b>Contiguous Area-Wilderness Characteristics</b>		
Glen Canyon National Recreation Area; Fifty Mile Mountain WSA (UT-040-080)		146,143

The entire Cave Point inventory unit (5,900 acres) has wilderness characteristics. The area appears natural and provides visitors with outstanding opportunities for hiking, rock climbing, horseback riding, sightseeing, and photography. Trails to scenic vistas and Fiftymile Mountain originate in or pass through the unit. The Cave Point promontory, pedestal rocks, hoodoos, caves, and potholes provide superb geological sightseeing. Outstanding vistas of the Escalante Canyons and the Straight Cliffs are available in all directions.

The unit is contiguous to BLM's Fifty Mile Wilderness Study Area (WSA) and the Glen Canyon National Recreation Area (NRA), portions of which have been administratively endorsed for wilderness. The Cave Point inventory unit is an extension of the natural landscapes and wilderness values on these adjoining lands.

The boundary of the unit is drawn to exclude three small areas lacking wilderness characteristics because of substantially noticeable range developments. Two roads have been cherry-stemmed out of the unit.

## Unit Description

The Cave Point inventory unit is located in southeastern Kane County about 50 miles southeast of Escalante. It is composed entirely of public land within the Grand Staircase-Escalante National Monument. Glen Canyon NRA borders on the east and south. The area is a geographic extension of and indistinguishable from adjoining lands found in the Glen Canyon NRA and the Fifty Mile Mountain WSA.

The unit is made up of two distinct geographic areas: Fiftymile Bench and the lower bench. Both benches are divided by a prominent 1,000-foot escarpment. The base of the escarpment near the Hole-in-the-Rock Road contains the highly eroded, cave-like sandstone outcrops of Cave Point, giving the unit its name. The escarpment includes areas of large landslide deposits and areas containing pedestal rocks or hoodoos. Vegetation on Fiftymile Bench is predominantly sagebrush and piñon-juniper woodland, while the lower bench is mainly blackbrush, sagebrush, and rabbitbrush.

## Wilderness Characteristics

### Naturalness

The Cave Point inventory unit is natural. Grazing developments, campsites, vehicle ways and a segment of the Soda Slide Pack Trail are present, but these human imprints have a negligible influence on the landscape. Three small areas outside the unit are unnatural because of substantially noticeable grazing developments. One of these unnatural areas, encompassing Pole Well (reservoir and trough) and a line camp with an associated corral, has been cherry-stemmed from the unit at the end of cherry-stemmed roads. A

stock pond and catchment along the southwestern boundary road are also substantially noticeable maintained developments. The boundary of the unit has been drawn to exclude these as well.

## Outstanding Opportunities

### Solitude

The Cave Point inventory unit provides outstanding opportunities for solitude because of its vegetative and topographic screening, rugged escarpments, and remote location. In addition, the unit is contiguous to both the Glen Canyon NRA and Fifty Mile Mountain WSA, areas possessing outstanding opportunities for solitude.

### Primitive and Unconfined Recreation

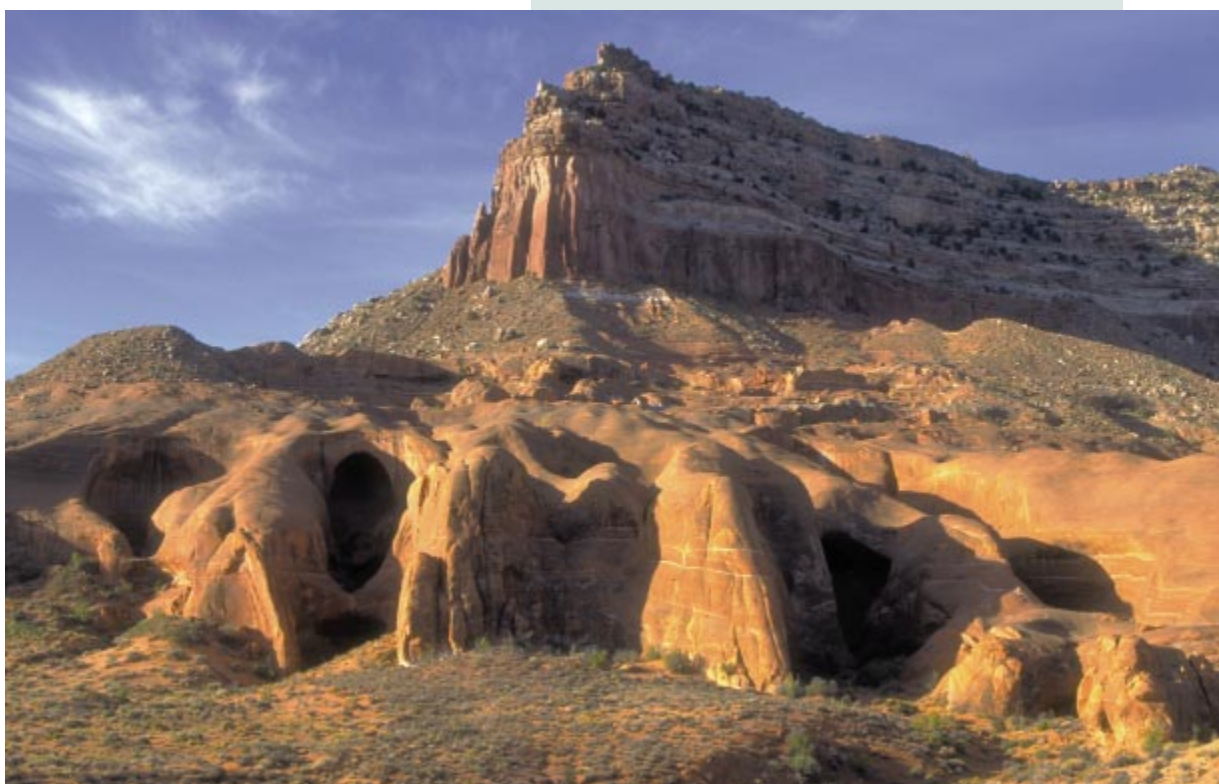
The Cave Point inventory unit provides outstanding opportunities for primitive and unconfined recreation. The unit is a focal point for primitive recreation, providing access to trails on Fiftymile Bench and Fiftymile Mountain and containing part of the Soda Slide pack trail. The unit provides opportunities for hiking, hunting, photography, rock climbing, and horseback travel. Visitor attractions include scenic overlooks, balanced rocks, hoodoos, and other erosional features. Moreover, Cave Point is contiguous to both the Glen Canyon NRA and Fifty Mile Mountain WSA, providing a continuation of the primitive recreation opportunities present in those areas.

## Supplemental Values

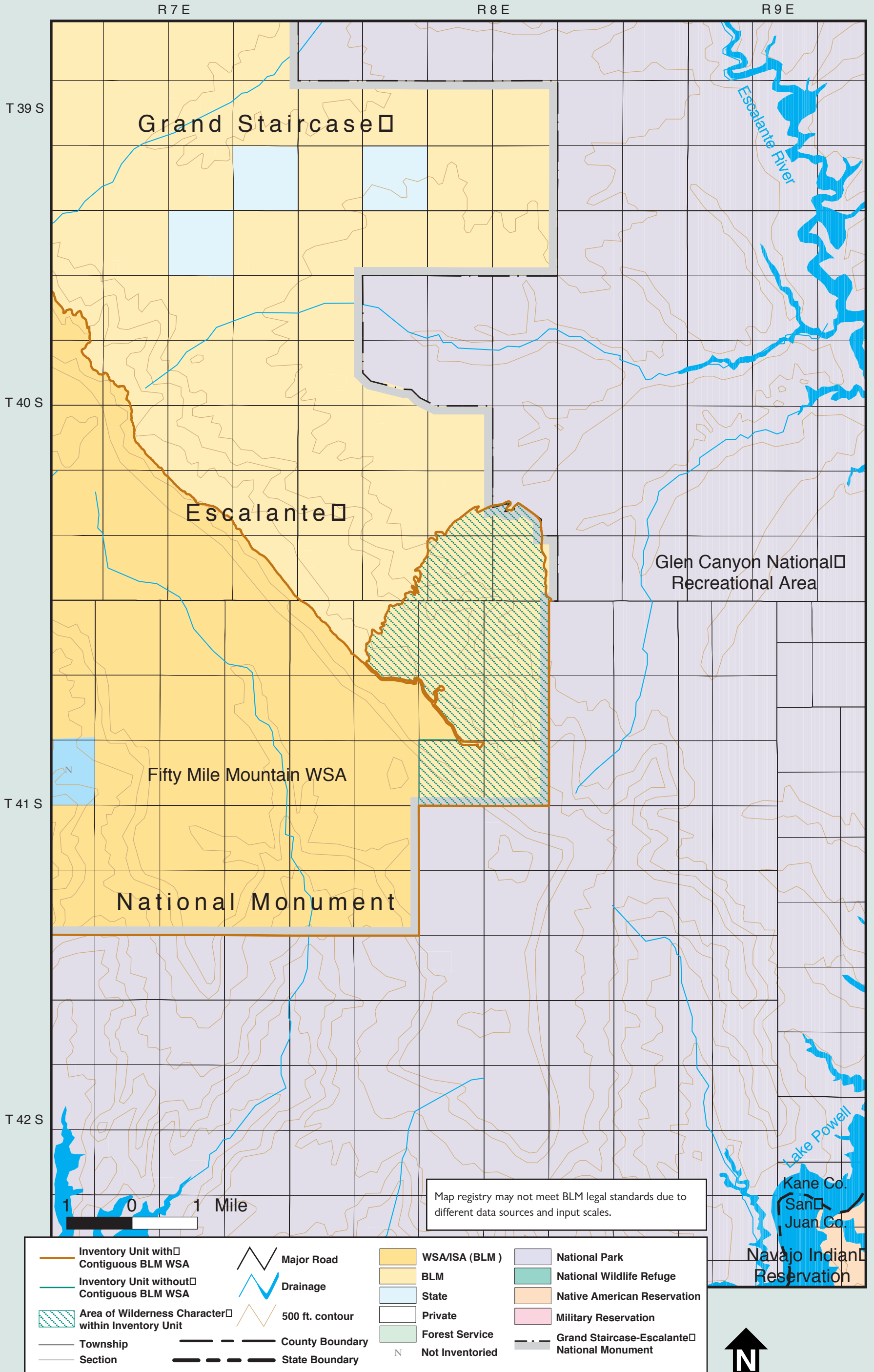
The promontory cliffs at Cave Point are striking features observed by visitors on the Hole-in-the-Rock Road. The cliffs themselves contain balanced or pedestal rocks, known as hoodoos. The base of Cave Point contains myriad caves and potholes, giving the unit its name. From Fiftymile Bench, there are outstanding views of the Escalante Canyons, the Straight Cliffs of Fiftymile Mountain, and much of the surrounding country.

CAVE POINT— The base of Cave Point contains myriad caves and potholes, giving rise to the area's name and adding to its appeal to visitors.

Jerry Sintz



# Cave Point



SOUTH CENTRAL REGION—Cave Point