

# White River

## Findings

INVENTORY UNIT ACRES		
Federal	State	Total
<b>With Wilderness Characteristics</b>		
13,500	2,300	15,800 (100%)
<b>Without Wilderness Characteristics</b>		
0	0	0 (0%)
<b>Inventory Unit Total</b>		
13,500	2,300	15,800
<b>Contiguous Area-Wilderness Characteristics</b>		
None		

The entire White River inventory unit (15,800 acres) meets all of the criteria needed for wilderness values. The unit is of sufficient size, is natural, and provides outstanding opportunities for solitude and primitive, unconfined recreation. The area's scenic beauty is exceptional. The White River Canyon and its side canyons provide excellent opportunities for hiking, photography, rafting, and canoeing.

## Unit Description

The White River inventory unit is located in eastern Uintah County about 30 air miles south-southeast of Vernal. It includes public land as well as several parcels of state land. There are also several private parcels adjacent to or surrounded by the inventory unit. Deep canyons and ridges dominate. The White River, which runs east to west, forms the major canyon, with one large meander separated only by a narrow ridge. Numerous pinnacles and colorful rock outcroppings are found in the long southern side canyons. The vegetation north of the river is a desert shrub community supporting saltbush, sagebrush, rabbitbrush and various other shrubs, grasses, and forbs. Higher elevations south of

the river support piñon and juniper woodlands on the ridgetops. Side canyon bottoms are mostly sagebrush and rabbit brush, along with greasewood and grasses. Cottonwood trees and other riparian plants thrive within the White River Canyon itself.

The inventory unit is surrounded by producing oil and gas wells and ongoing exploration. Current uses include floating and fishing the White River, cattle grazing, hunting, and sightseeing.

## Wilderness Characteristics

### Naturalness

The entire unit has natural character. The John Wesley Powell expedition highlighted a feature in this unit known as "Goblin City," which is an area of unique geologic beauty. Few developments exist within the inventory unit: human intrusions include routes constructed to support past oil and gas development, several vehicle ways, and an abandoned structure (the Rock House) associated with past mining. As a whole, these developments within the unit are substantially unnoticeable. The Rock House blends with the natural environment. Several of the vehicle ways are located in washes and become less noticeable with each storm event. The remaining vehicle ways are kept open only by occasional vehicle use.

WHITE RIVER—The spectacular scenery of the White River provides a dramatic backdrop for the hiker, rafter, or canoeist, or for fishing enthusiasts who visit this unique area.



## Outstanding Opportunities

### Solitude

The unit has rugged topography and is large enough to ensure an outstanding opportunity for solitude. Boundaries take advantage of ridgetops and deep canyons to isolate the unit from adjacent, ongoing oil and gas activity.

### Primitive and Unconfined Recreation

The unit's rugged topography and large size ensure an outstanding opportunity for primitive and unconfined recreation. There are spectacular vistas, abundant wildlife, and unique geologic features to explore. The unit provides outstanding opportunities for hiking, photography, camping, and, most noteworthy, floating on the White River.

### Supplemental Values

The White River provides an opportunity to access the unit by canoe or rubber raft. The deep canyons, high ridges, cliffs, and unique geologic features create spectacular vistas. The John Wesley Powell expedition highlighted a feature known as "Goblin City," an area of unique geologic beauty within the unit. The cottonwood trees along the river and the piñon and juniper woodlands to the south combine to provide a variety of form, line, and color, resulting in strong visual contrasts and exceptional natural beauty. Antelope, deer, and elk are all common in the unit. The river and adjacent cliffs also provide habitat for a variety of birds.

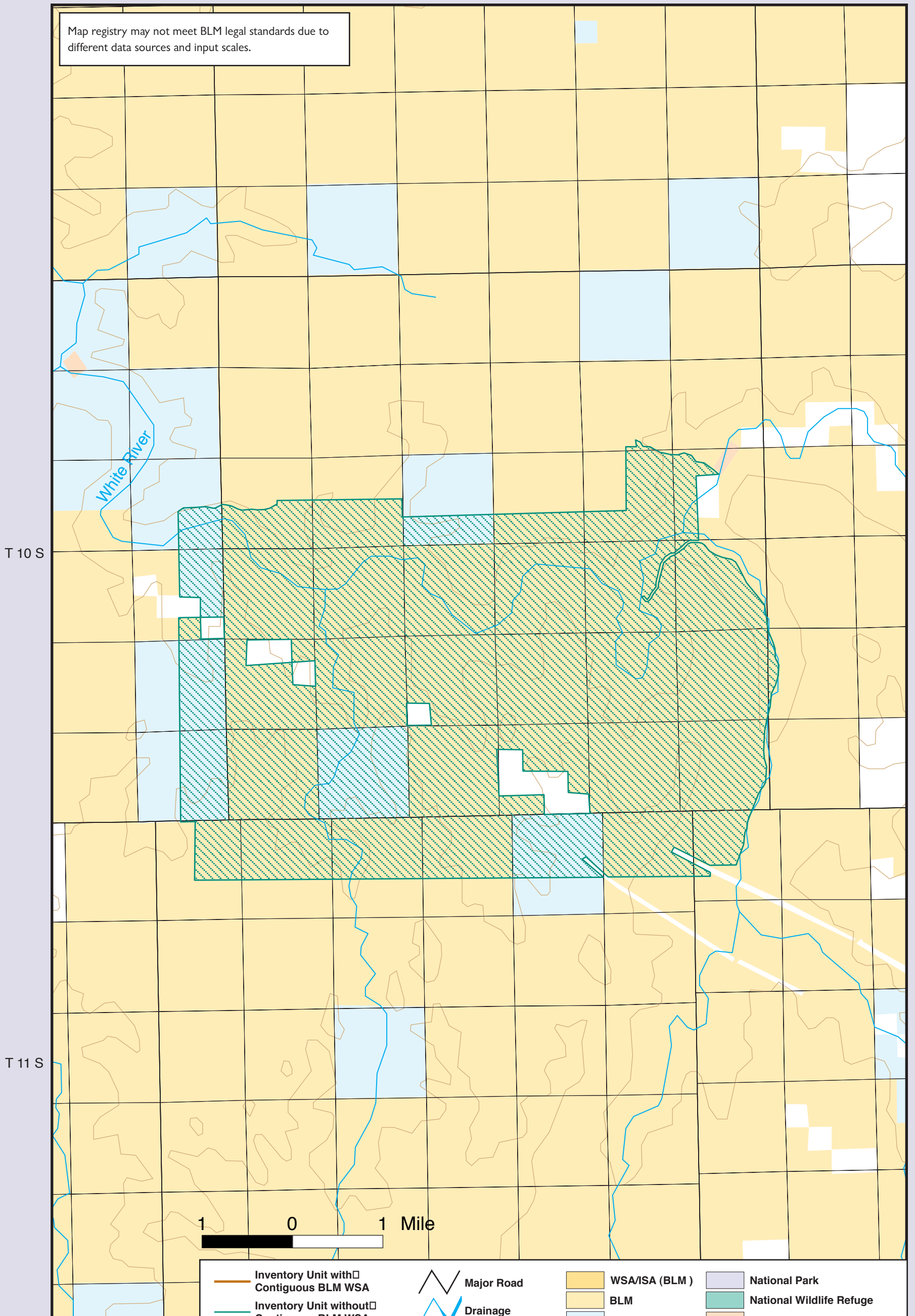
# White River

R 22 E

R 23 E

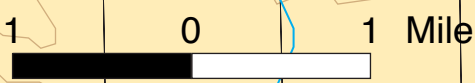
R 24 E

Map registry may not meet BLM legal standards due to different data sources and input scales.



T 10 S

T 11 S



Inventory Unit with Contiguous BLM WSA	Major Road	WSA/ISA (BLM)	National Park
Inventory Unit without Contiguous BLM WSA	Drainage	BLM	National Wildlife Refuge
Area of Wilderness Character within Inventory Unit	500 ft. contour	State	Native American Reservation
Township	County Boundary	Private	Military Reservation
Section	State Boundary	Forest Service	Grand Staircase-Escalante National Monument
		Not Inventoried	