

Daniels Canyon

Findings

INVENTORY UNIT ACRES		
Federal	State	Total
With Wilderness Characteristics		
3,100	800	3,900 (100%)
Without Wilderness Characteristics		
0	0	0 (0%)
Inventory Unit Total		
3,100	800	3,900
Contiguous Area-Wilderness Characteristics		
Daniels Canyon WSA (UT-080-414)		2,496

All of the Daniels Canyon inventory unit (3,900 acres) has wilderness characteristics. It meets the size requirement (at least 5,000 acres total) as a roadless extension of the 2,496-acre Daniels Canyon Wilderness Study Area (WSA). The unit is natural; the few impacts associated mostly with sheep grazing are not noticeable in the area as a whole. Opportunities for both solitude and primitive recreation are present and enhance those values found in the Daniels Canyon WSA. Given the size of the area, however, these opportunities are considered outstanding only in association with the values present in the WSA. The inventory unit has numerous values that supplement the requisite wilderness characteristics, including cultural, botanical, and wildlife resources.

Unit Description

The Daniels Canyon inventory unit is located in northeast Uintah County about 25 air miles east of Vernal. The area

contains mostly public land, along with portions of state land. The state land parcel in Unit 1 plummets about 1,500 feet down through cream-colored sandstone and thick forest to Cub Creek in Daniels Canyon. It is bounded by a primitive road in Docs Valley on the north and by the Daniels Canyon WSA on the remaining sides. Unit 2 rises several thousand feet up the back side of Blue Mountain, almost to the upper edge of Cliff Ridge. The western portion of the unit is forested with piñon and juniper, while the eastern portion is covered with sagebrush and grass. The high, southern end of the unit offers spectacular panoramic views of Split Mountain. Hunters and sheep ranchers are the predominant users of the area.

Wilderness Characteristics

Naturalness

The Daniels Canyon inventory unit retains its natural character because of the limited number of intrusions. The steep, rugged topography has kept the area natural and undeveloped. The existing human imprints are not noticeable in the unit as a whole because they are naturally rehabilitating, are screened by vegetation, and are generally located on the boundary of the unit. These developments do not dominate the natural landscape seen by visitors.

Outstanding Opportunities

Solitude

The inventory unit is contiguous to and is an extension of the Daniels Canyon WSA,

which has wilderness solitude values. It is heavily forested, with many ridges and canyons that offer excellent opportunities for solitude. The incredible scenic vistas available from within the unit intensify the feelings of solitude. Given that both the inventory unit and the WSA are relatively small, the opportunity for outstanding solitude is enhanced by their combination.

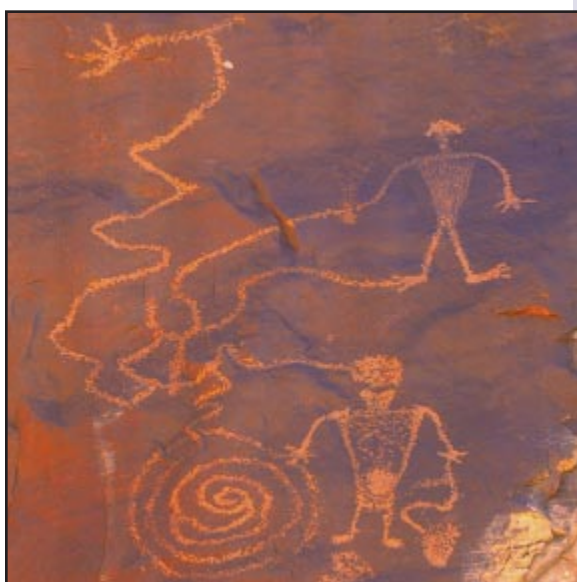
Primitive and Unconfined Recreation

The inventory unit is contiguous to and is an extension of the Daniels Canyon WSA, which has wilderness primitive and unconfined recreation values. The unit has excellent opportunities for hiking, camping, and hunting in both large, deep canyons and high mountain meadows. The unit also provides panoramic views of expansive mountain meadows and Split Mountain. The opportunity for outstanding primitive recreation is enhanced by the combination of the inventory unit and the WSA.

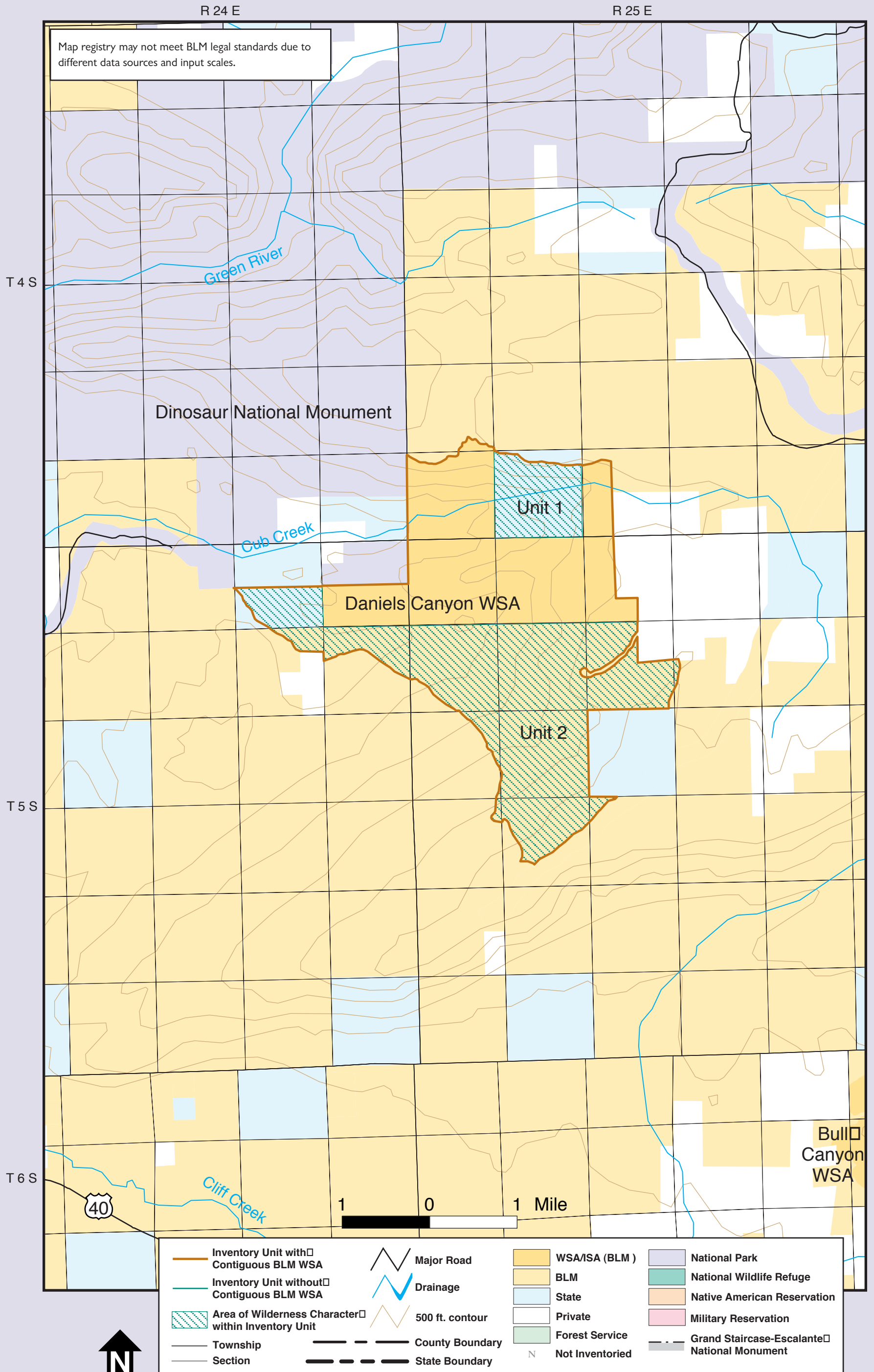
Supplemental Values

The Daniels Canyon inventory unit has numerous supplemental values. Uinta Fremont rock art is found here, as well as a mud granary and associated lithic scatters and camps. Other supplemental values include wildlife habitat for State and BLM sensitive species, including the Mexican spotted owl, peregrine falcon, spotted and big free-tail bats, and Utah milk snake. Habitat is also likely present for several important botanical species.

DANIELS CANYON— Uinta Fremont rock art found in the inventory unit is but one of the many values enhancing those already found in the contiguous Daniels Canyon WSA.



Daniels Canyon



NORTHEAST REGION—Daniels Canyon