

Bull Mountain

Findings

INVENTORY UNIT ACRES		
Federal	State	Total
With Wilderness Characteristics		
3,800	1,400	5,200 (98%)
Without Wilderness Characteristics		
100	0	100 (2%)
Inventory Unit Total		
3,900	1,400	5,300
Contiguous Area-Wilderness Characteristics		
Bull Mountain WSA (UT-050-242)		13,620

Most of the Bull Mountain inventory unit (5,200 acres) has wilderness characteristics. Only one small portion (100 acres) with uranium exploration scars lacks wilderness characteristics; this extensively disturbed area is located on a small bench north of Butler Wash along the unit's southeastern boundary. While the unit contains a few other old mining scars and vehicle ways, none of these are substantially noticeable in the landscape. A road extending to the stock pond located just east of Twin Seeps has been cherry-stemmed out of the unit.

As an extension of the much larger Bull Mountain Wilderness Study Area (WSA), this unit, which contains the drainages of both Poison Spring Canyon and Butler Wash, provides outstanding opportunities for solitude and primitive and unconfined recreation. The topography is largely broken and difficult to traverse either on foot or by vehicle. Several of the canyons to the east offer striking visual contrasts to the cliff faces and mountain peaks of Bull Mountain.

Unit Description

The Bull Mountain inventory unit is located in Garfield County in the northern portion of the Henry Mountains. The Bull Mountain WSA is contiguous to the unit. The unit's terrain, which consists of northward-draining shallow-to-deep canyons of varying widths, is characterized as transitional between the Bull Mountain igneous intrusions and the red canyons of the Morrison Formation badlands at lower elevations. The vegetation is predominantly piñon and juniper woodland, with sagebrush and other desert shrubs located on the benchlands.

Wilderness Characteristics

Naturalness

The Bull Mountain inventory unit largely retains its natural character. As is the case with most of the eastern flanks of the Henry Mountains where the Morrison Formation outcrops, uranium exploration has occurred. Although most of the Morrison outcrop occurs outside unit boundaries, exploration drilling has occurred within the Bull Mountain inventory unit, and four-wheel drive vehicles are sometimes driven on the old uranium exploration ways. A 100-acre area impacted by uranium exploration on a small bench above Butler Wash has lost its natural character.

Outstanding Opportunities

Solitude

The Bull Mountain inventory unit is contiguous to and is an extension of the Bull Mountain WSA, which has outstanding opportunities for solitude. In combination with this WSA, the inventory unit has outstanding opportunities for solitude.

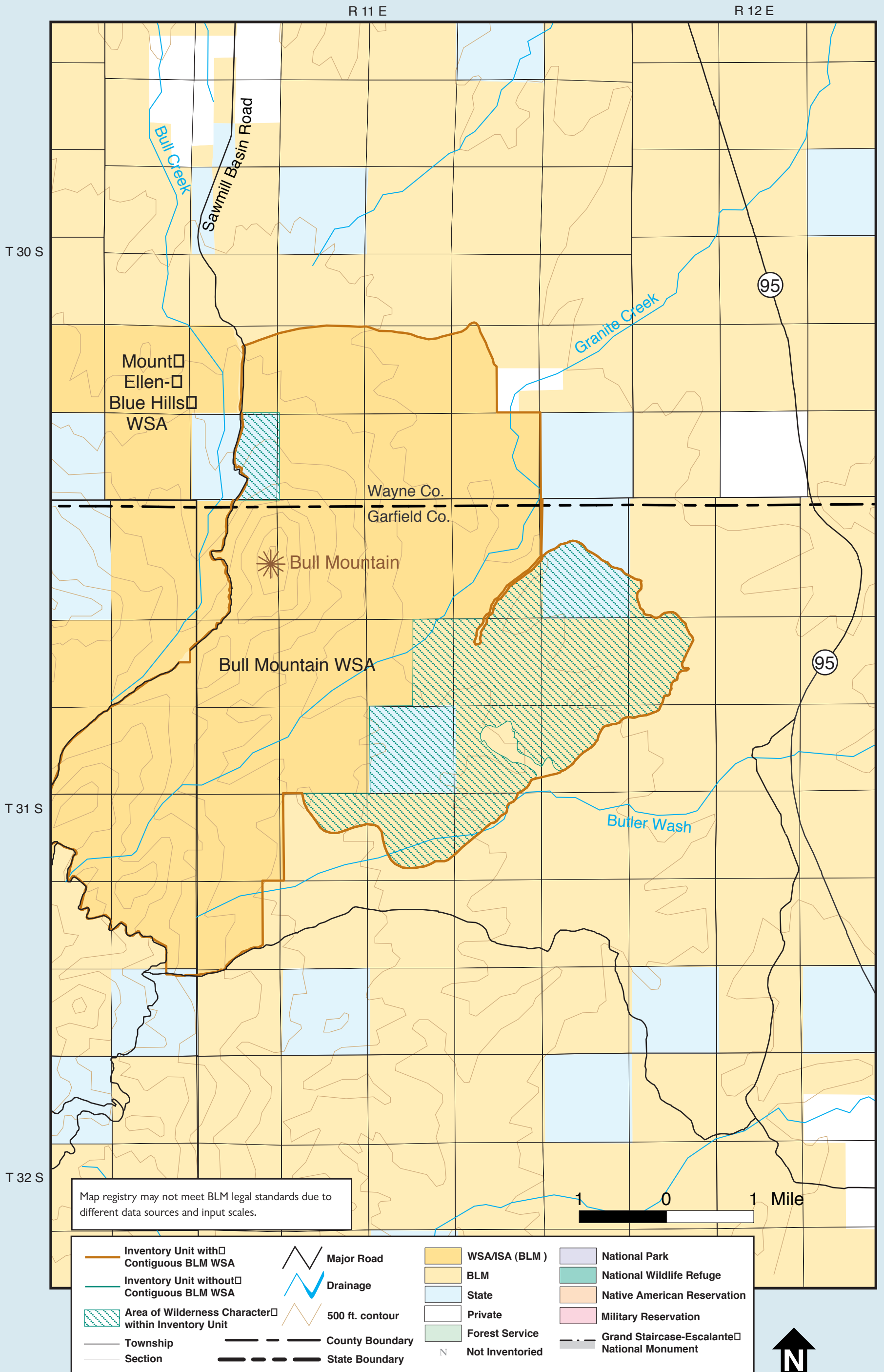
Primitive and Unconfined Recreation

The Bull Mountain inventory unit is contiguous to and is an extension of the Bull Mountain WSA, which has outstanding opportunities for primitive and unconfined recreation. In combination with this WSA, the inventory unit has outstanding opportunities for primitive and unconfined recreation.

Supplemental Values

No supplemental values have been identified.

Bull Mountain



EAST CENTRAL REGION—BULL MOUNTAIN