



United States  
Department of  
Agriculture

Forest Service

Pacific  
Northwest  
Region



June 2007

FS14-SO-10-07

# Umatilla National Forest

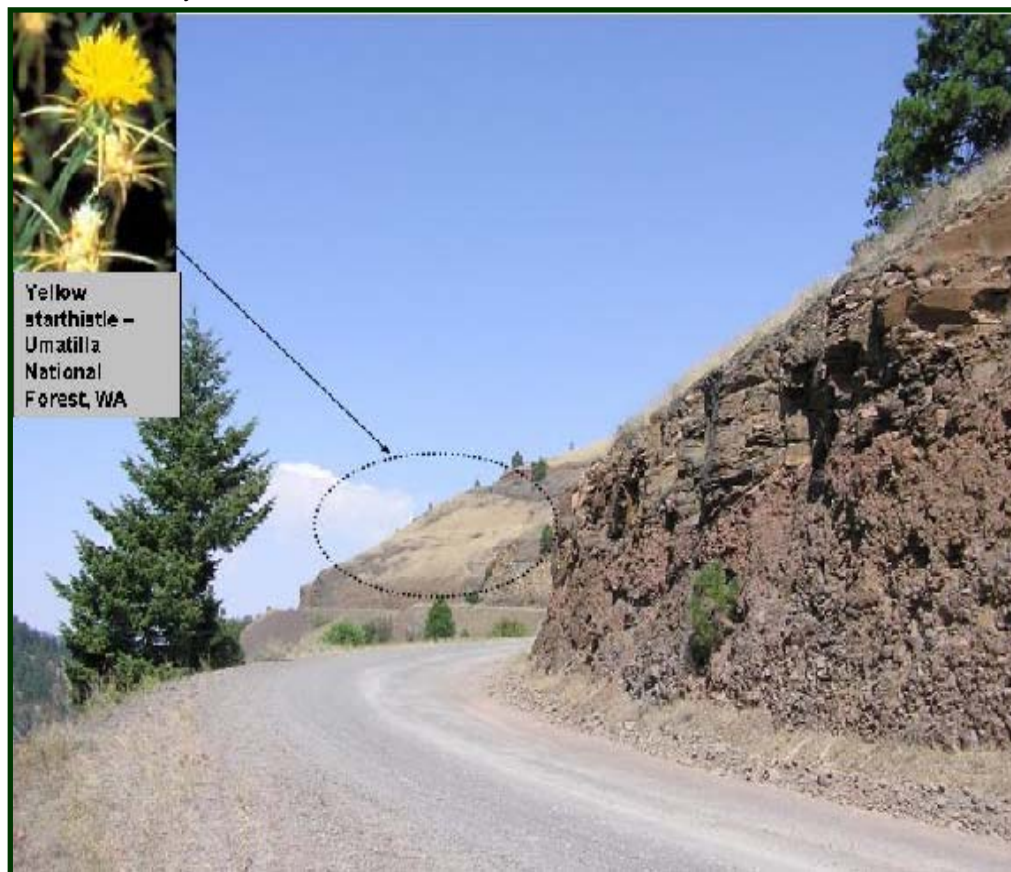
## Draft Environmental Impact Statement

### Invasive Plants Treatment Project

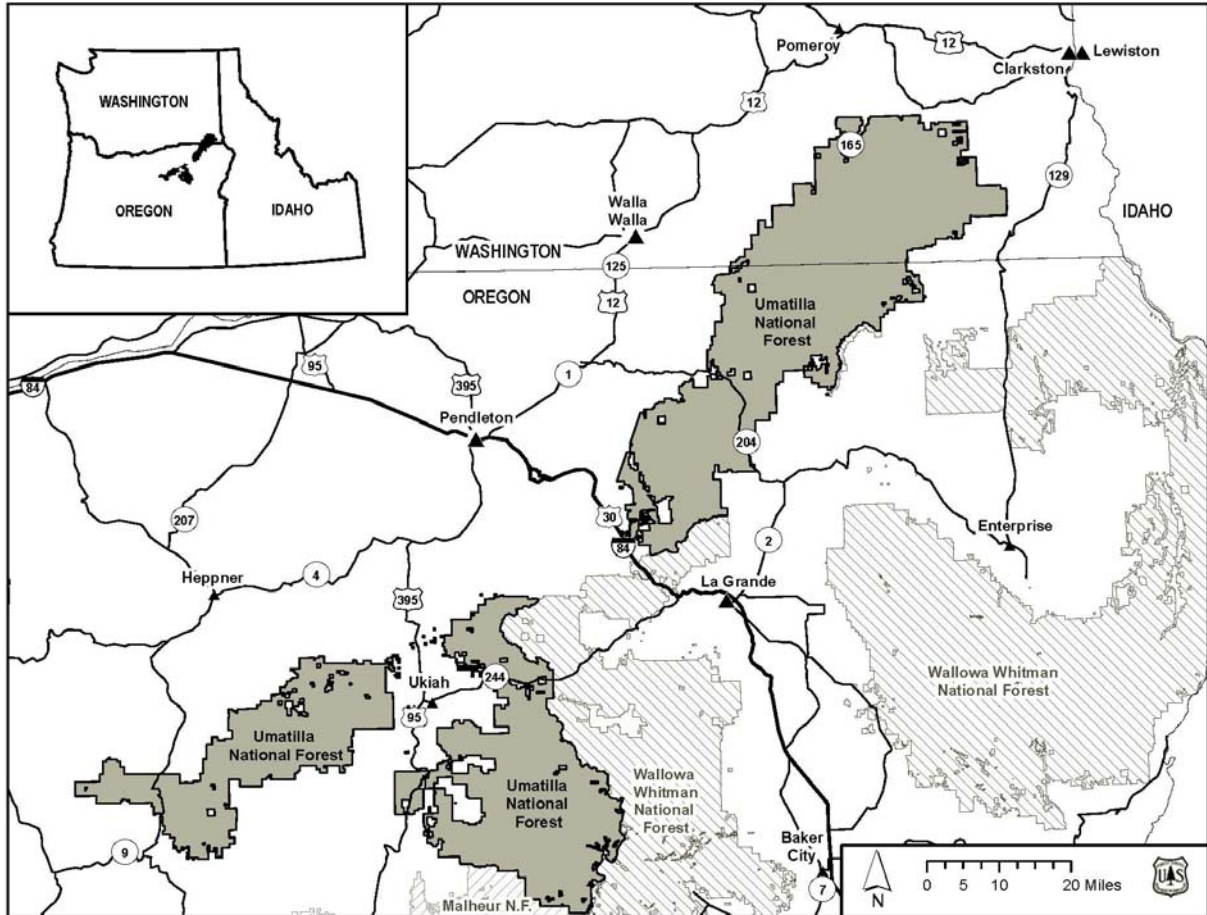
## Volume II - Appendices

Counties: Asotin, Columbia, Garfield, and Walla Walla in Washington; Grant, Morrow, Umatilla, Union, Wallowa, and Wheeler in Oregon

Picture Courtesy of Julie Laufman



## Umatilla National Forest Vicinity Map



The U.S. Department of Agriculture (USDA) prohibits discrimination in all its programs and activities on the basis of race, color, national origin, age, disability, and where applicable, sex, marital status, familial status, parental status, religion, sexual orientation, genetic information, political beliefs, reprisal, or because all or part of an individual's income is derived from any public assistance program. (Not all prohibited bases apply to all programs.) Persons with disabilities who require alternative means for communication of program information (Braille, large print, audiotape, etc.) should contact USDA's TARGET Center at (202) 720-2600 (voice and TDD). To file a complaint of discrimination, write to USDA, Director, Office of Civil Rights, 1400 Independence Avenue, S.W., Washington, D.C. 20250-9410, or call (800) 795-3272 (voice) or (202) 720-6382 (TDD). USDA is an equal opportunity provider and employer.

## Table of Contents

- Appendix A – The Forest Plan
- Appendix B – Botany
- Appendix C – Wildlife
- Appendix D – Soil and Water
- Appendix E – Aquatics
- Appendix F – Aerial Spray Guidelines

This Page Left Blank Intentionally